

Data Path : Z:\pestpcbsrv\HPCHEM1\FID\_E\Data\FE122923AL\  
 Data File : FE046024.D  
 Signal(s) : FID1B.ch  
 Acq On : 29 Dec 2023 02:35  
 Operator : YP\AJ  
 Sample : 20 PPM ALIPHATIC HC STD ICV  
 Misc :  
 ALS Vial : 28 Sample Multiplier: 1

Instrument :  
 FID\_E  
 ClientSampleId :

Integration File: autoint1.e  
 Quant Time: Dec 29 03:52:47 2023  
 Quant Method : Z:\pestpcbsrv\HPCHEM1\FID\_E\methods\Aliphatic EPH 122923.M  
 Quant Title : GC Extractables  
 QLast Update : Fri Dec 29 03:49:54 2023  
 Response via : Initial Calibration  
 Integrator: ChemStation

Volume Inj. : 1 ul  
 Signal Phase : Rxi-1ms  
 Signal Info : 20M x 0.18mm x 0.18um

Compound	R.T.	Response	Conc Units
-----			
System Monitoring Compounds			
9) S ortho-Terphenyl (SURR)	11.839	3861947	21.252 ug/ml
Spiked Amount	50.000	Recovery =	42.50%
12) S 1-chlorooctadecane (S...	13.282	2842034	21.271 ug/ml
Spiked Amount	50.000	Recovery =	42.54%
Target Compounds			
1) T n-Nonane (C9)	3.223	3228722	21.097 ug/ml
2) T n-Decane (C10)	4.474	3296287	21.239 ug/ml
3) T A~Naphthalene (C11.7)	6.176	3565726	21.441 ug/ml
4) T n-Dodecane (C12)	6.642	3336019	21.366 ug/ml
5) T A~2-methylnaphthalene...	7.273	3401016	21.362 ug/ml
6) T n-Tetradecane (C14)	8.469	3306642	21.227 ug/ml
7) T n-Hexadecane (C16)	10.079	3357243	21.200 ug/ml
8) T n-Octadecane (C18)	11.526	3334106	21.183 ug/ml
10) T n-Eicosane (C20)	12.838	3194127	21.114 ug/ml
11) T n-Heneicosane (C21)	13.451	3114731	21.181 ug/ml
13) T n-Docosane (C22)	14.038	3063734	20.960 ug/ml
14) T n-Tetracosane (C24)	15.144	2987300	20.597 ug/ml
15) T n-Hexacosane (C26)	16.169	2917615	20.351 ug/ml
16) T n-Octacosane (C28)	17.121	2881381	20.091 ug/ml
17) T n-Tricontane (C30)	18.014	2971513	19.992 ug/ml
18) T n-Dotriacontane (C32)	18.849	2988365	19.981 ug/ml
19) T n-Tetratriacontane (C34)	19.636	2943433	20.547 ug/ml
20) T n-Hexatriacontane (C36)	20.381	3073814	21.082 ug/ml
21) T n-Octatriacontane (C38)	21.115	3119505	21.155 ug/ml
22) T n-Tetracontane (C40)	22.017	3276967	20.936 ug/ml

(f)=RT Delta > 1/2 Window

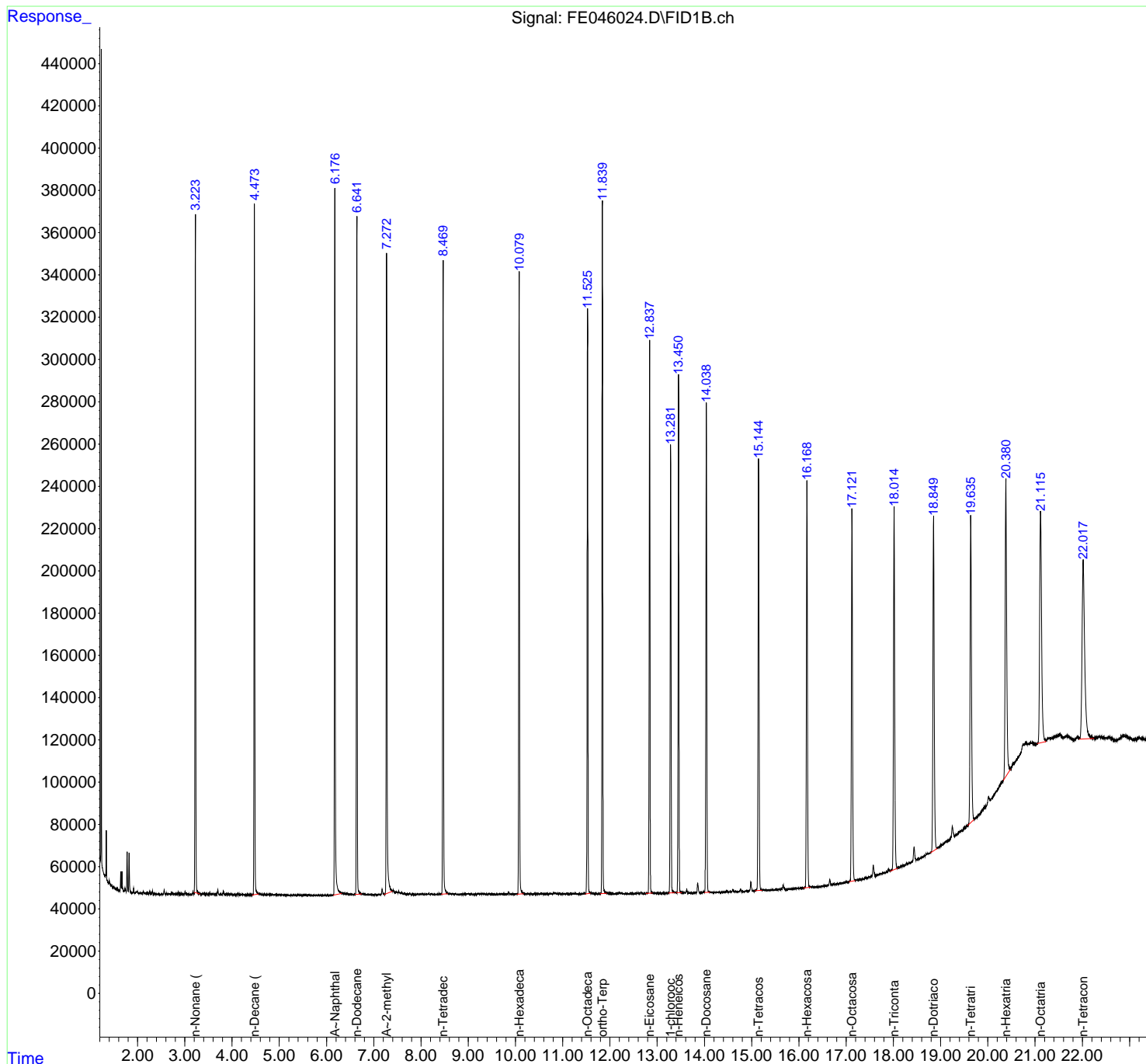
(m)=manual int.

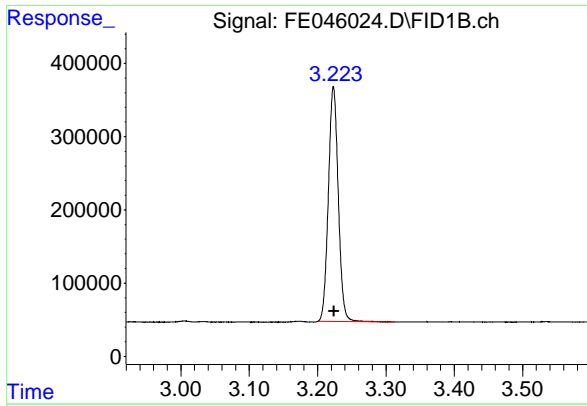
Data Path : Z:\pestpcbsrv\HPCHEM1\FID\_E\Data\FE122923AL\  
Data File : FE046024.D  
Signal(s) : FID1B.ch  
Acq On : 29 Dec 2023 02:35  
Operator : YP\AJ  
Sample : 20 PPM ALIPHATIC HC STD ICV  
Misc :  
ALS Vial : 28 Sample Multiplier: 1

Instrument :  
FID\_E  
ClientSampleId :

Integration File: autoint1.e  
Quant Time: Dec 29 03:52:47 2023  
Quant Method : Z:\pestpcbsrv\HPCHEM1\FID\_E\methods\Aliphatic EPH 122923.M  
Quant Title : GC Extractables  
QLast Update : Fri Dec 29 03:49:54 2023  
Response via : Initial Calibration  
Integrator: ChemStation

Volume Inj. : 1 ul  
Signal Phase : Rxi-1ms  
Signal Info : 20M x 0.18mm x 0.18um

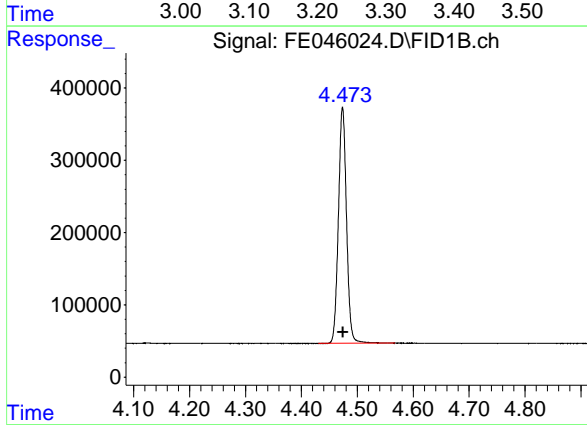




#1 n-Nonane (C9)

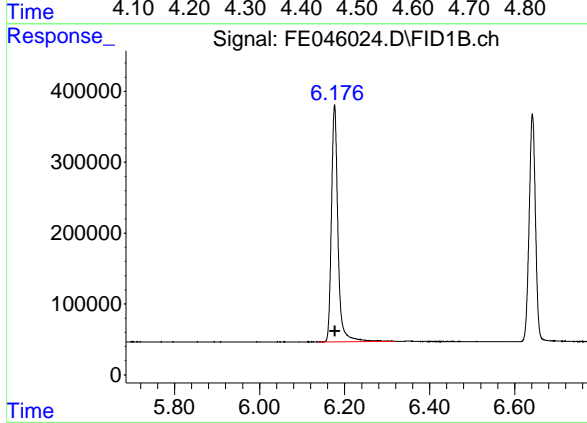
R.T.: 3.223 min  
 Delta R.T.: 0.000 min  
 Response: 3228722  
 Conc: 21.10 ug/ml

Instrument :  
 FID\_E  
 ClientSampleId :



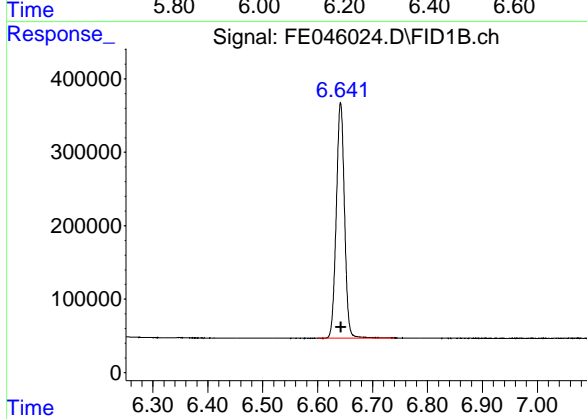
#2 n-Decane (C10)

R.T.: 4.474 min  
 Delta R.T.: 0.000 min  
 Response: 3296287  
 Conc: 21.24 ug/ml



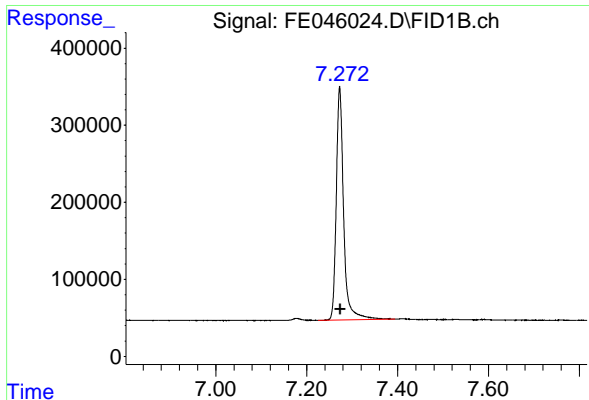
#3 A~Naphthalene (C11.7)

R.T.: 6.176 min  
 Delta R.T.: 0.000 min  
 Response: 3565726  
 Conc: 21.44 ug/ml



#4 n-Dodecane (C12)

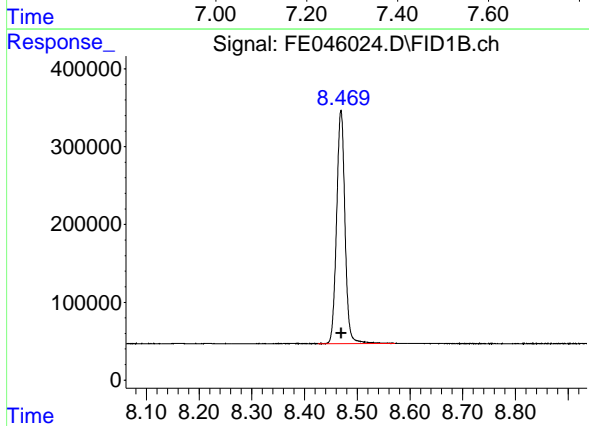
R.T.: 6.642 min  
 Delta R.T.: 0.000 min  
 Response: 3336019  
 Conc: 21.37 ug/ml



#5 A~2-methylnaphthalene (C12.89)

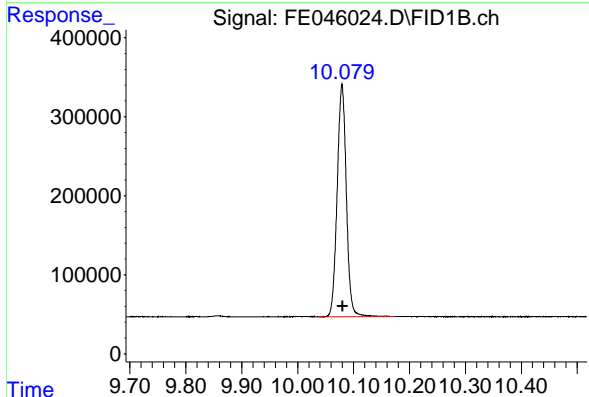
R.T.: 7.273 min  
 Delta R.T.: -0.001 min  
 Response: 3401016  
 Conc: 21.36 ug/ml

Instrument :  
 FID\_E  
 ClientSampleId :



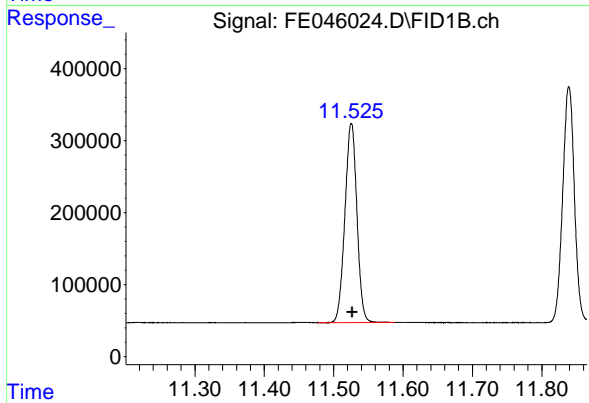
#6 n-Tetradecane (C14)

R.T.: 8.469 min  
 Delta R.T.: 0.000 min  
 Response: 3306642  
 Conc: 21.23 ug/ml



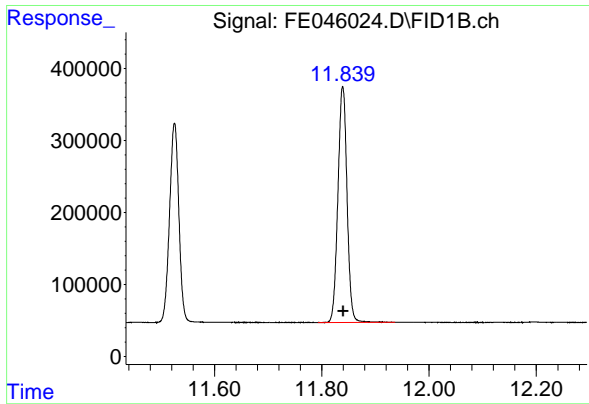
#7 n-Hexadecane (C16)

R.T.: 10.079 min  
 Delta R.T.: -0.001 min  
 Response: 3357243  
 Conc: 21.20 ug/ml



#8 n-Octadecane (C18)

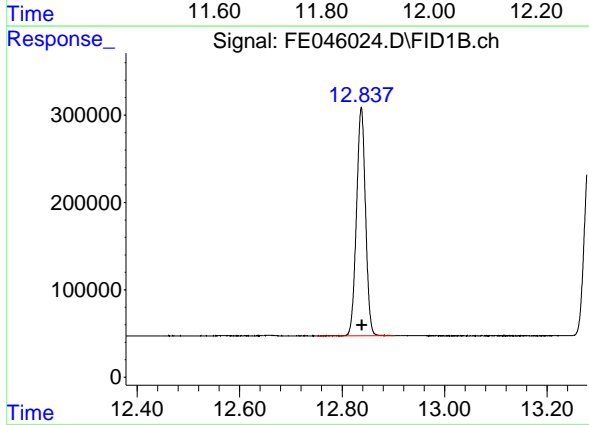
R.T.: 11.526 min  
 Delta R.T.: -0.001 min  
 Response: 3334106  
 Conc: 21.18 ug/ml



#9 ortho-Terphenyl (SURR)

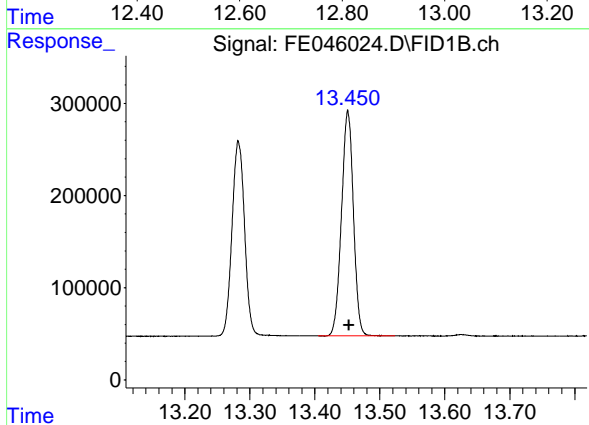
R.T.: 11.839 min  
 Delta R.T.: -0.001 min  
 Response: 3861947  
 Conc: 21.25 ug/ml

Instrument :  
 FID\_E  
 ClientSampleId :



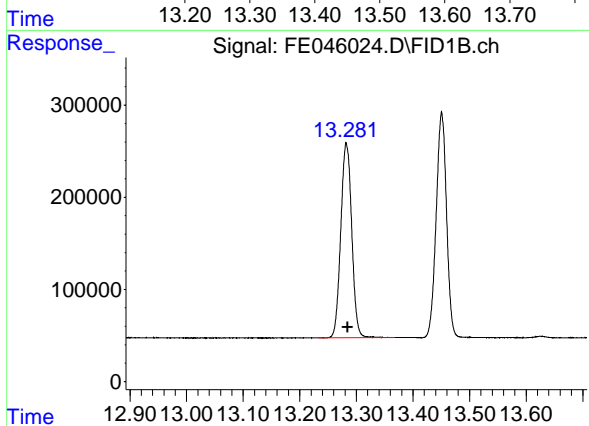
#10 n-Eicosane (C20)

R.T.: 12.838 min  
 Delta R.T.: -0.001 min  
 Response: 3194127  
 Conc: 21.11 ug/ml



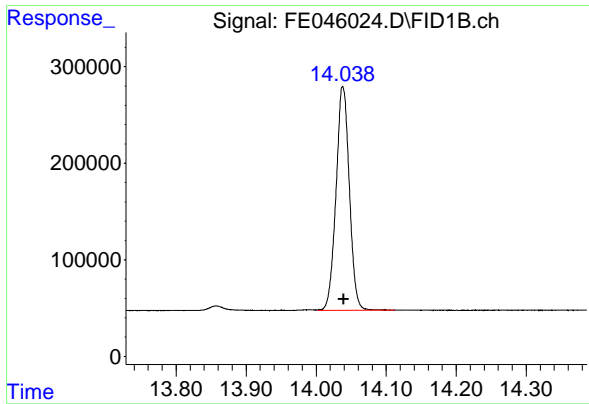
#11 n-Heneicosane (C21)

R.T.: 13.451 min  
 Delta R.T.: -0.002 min  
 Response: 3114731  
 Conc: 21.18 ug/ml



#12 1-chlorooctadecane (SURR)

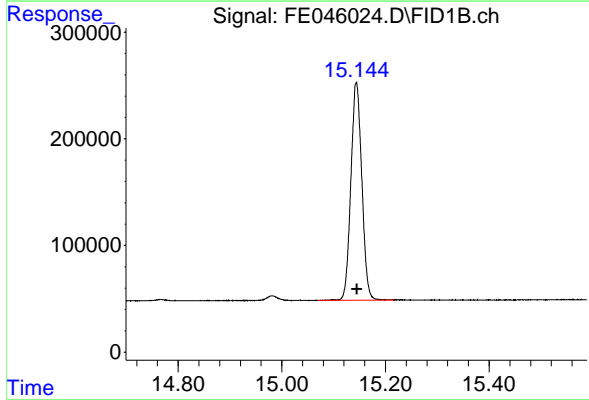
R.T.: 13.282 min  
 Delta R.T.: -0.002 min  
 Response: 2842034  
 Conc: 21.27 ug/ml



#13 n-Docosane (C22)

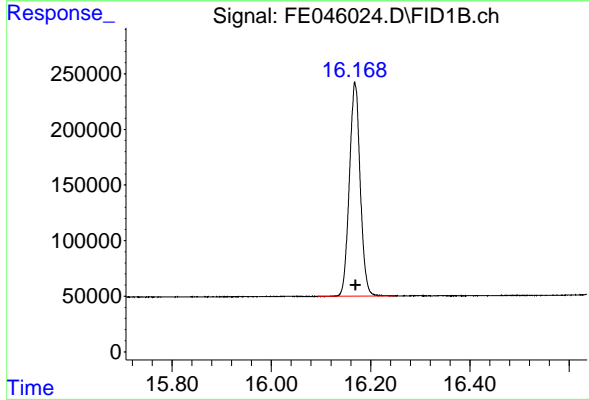
R.T.: 14.038 min  
Delta R.T.: -0.001 min  
Response: 3063734  
Conc: 20.96 ug/ml

Instrument :  
FID\_E  
ClientSampleId :



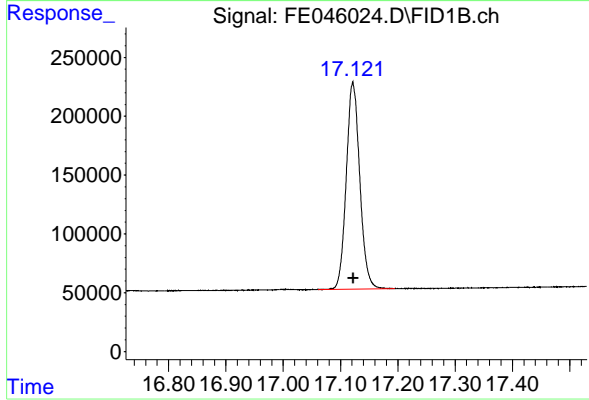
#14 n-Tetracosane (C24)

R.T.: 15.144 min  
Delta R.T.: -0.002 min  
Response: 2987300  
Conc: 20.60 ug/ml



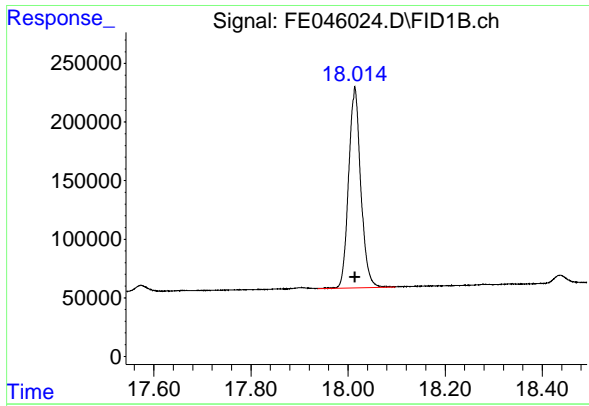
#15 n-Hexacosane (C26)

R.T.: 16.169 min  
Delta R.T.: -0.001 min  
Response: 2917615  
Conc: 20.35 ug/ml



#16 n-Octacosane (C28)

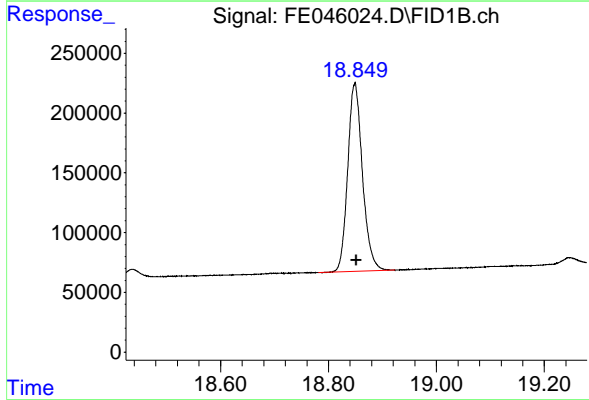
R.T.: 17.121 min  
Delta R.T.: -0.001 min  
Response: 2881381  
Conc: 20.09 ug/ml



#17 n-Tricontane (C30)

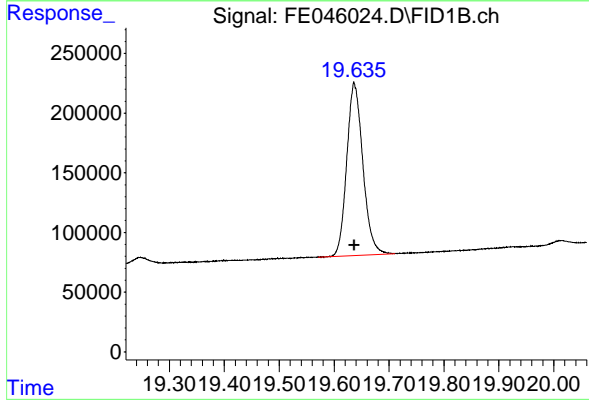
R.T.: 18.014 min  
Delta R.T.: 0.000 min  
Response: 2971513  
Conc: 19.99 ug/ml

Instrument :  
FID\_E  
ClientSampleId :



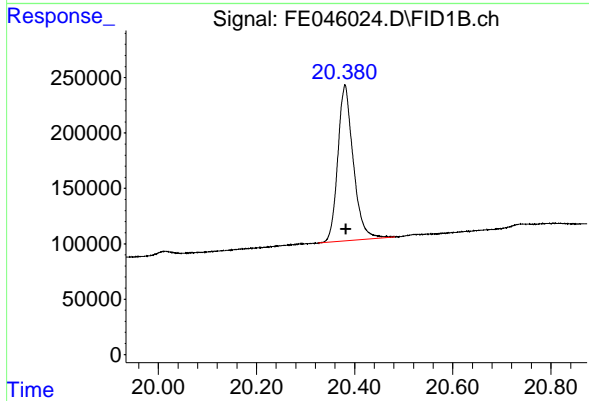
#18 n-Dotriacontane (C32)

R.T.: 18.849 min  
Delta R.T.: -0.002 min  
Response: 2988365  
Conc: 19.98 ug/ml



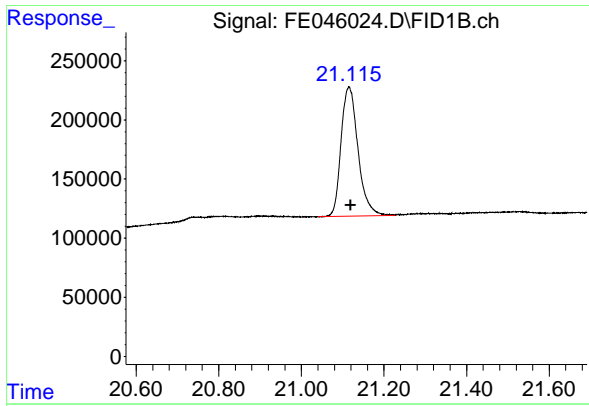
#19 n-Tetracontane (C34)

R.T.: 19.636 min  
Delta R.T.: 0.000 min  
Response: 2943433  
Conc: 20.55 ug/ml



#20 n-Hexatriacontane (C36)

R.T.: 20.381 min  
Delta R.T.: -0.002 min  
Response: 3073814  
Conc: 21.08 ug/ml



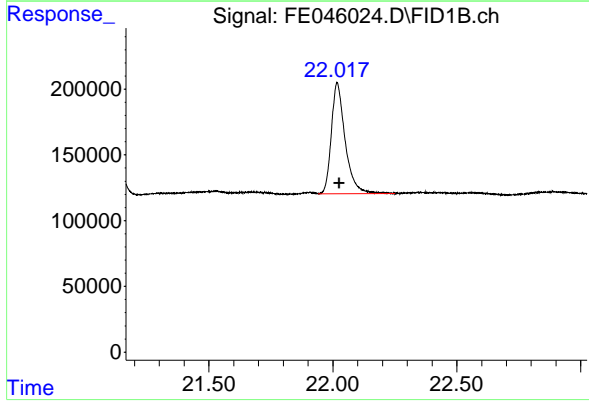
#21 n-Octatriacontane (C38)

R.T.: 21.115 min  
Delta R.T.: -0.005 min  
Response: 3119505  
Conc: 21.16 ug/ml

Instrument :

FID\_E

ClientSampleId :



#22 n-Tetracontane (C40)

R.T.: 22.017 min  
Delta R.T.: -0.008 min  
Response: 3276967  
Conc: 20.94 ug/ml