

Data Path : Z:\pestpcbsrv\HPCHEM1\FID\_E\Data\FE123024AL\  
 Data File : FE051797.D  
 Signal(s) : FID1B.ch  
 Acq On : 30 Dec 2024 08:19  
 Operator : YP\AJ  
 Sample : MECL2  
 Misc :  
 ALS Vial : 1 Sample Multiplier: 1

Instrument :  
 FID\_E  
 ClientSampleId :

Integration File: autoint1.e  
 Quant Time: Dec 31 02:10:35 2024  
 Quant Method : Z:\pestpcbsrv\HPCHEM1\FID\_E\methods\Aliphatic EPH 122724.M  
 Quant Title : GC Extractables  
 QLast Update : Mon Dec 30 09:52:06 2024  
 Response via : Initial Calibration  
 Integrator: ChemStation

Volume Inj. : 1 ul  
 Signal Phase : Rxi-1ms  
 Signal Info : 20M x 0.18mm x 0.18um

Compound	R.T.	Response	Conc Units
-----			
System Monitoring Compounds			
Target Compounds			
13) T n-Docosane (C22)	14.190	432222	3.274 ug/ml
14) T n-Tetracosane (C24)	15.304	406967	3.136 ug/ml
15) T n-Hexacosane (C26)	16.326	246020	1.959 ug/ml
16) T n-Octacosane (C28)	17.272	157281	1.303 ug/ml
17) T n-Tricontane (C30)	18.155	205477	1.707 ug/ml
18) T n-Dotriacontane (C32)	18.994	372897	3.258 ug/ml
19) T n-Tetratriacontane (C34)	19.763	173331	1.719 ug/ml
20) T n-Hexatriacontane (C36)	20.501	192789	2.163 ug/ml
21) T n-Octatriacontane (C38)	21.250	161707	1.883 ug/ml
22) T n-Tetracontane (C40)	22.249f	571508	6.480 ug/ml

(f)=RT Delta > 1/2 Window

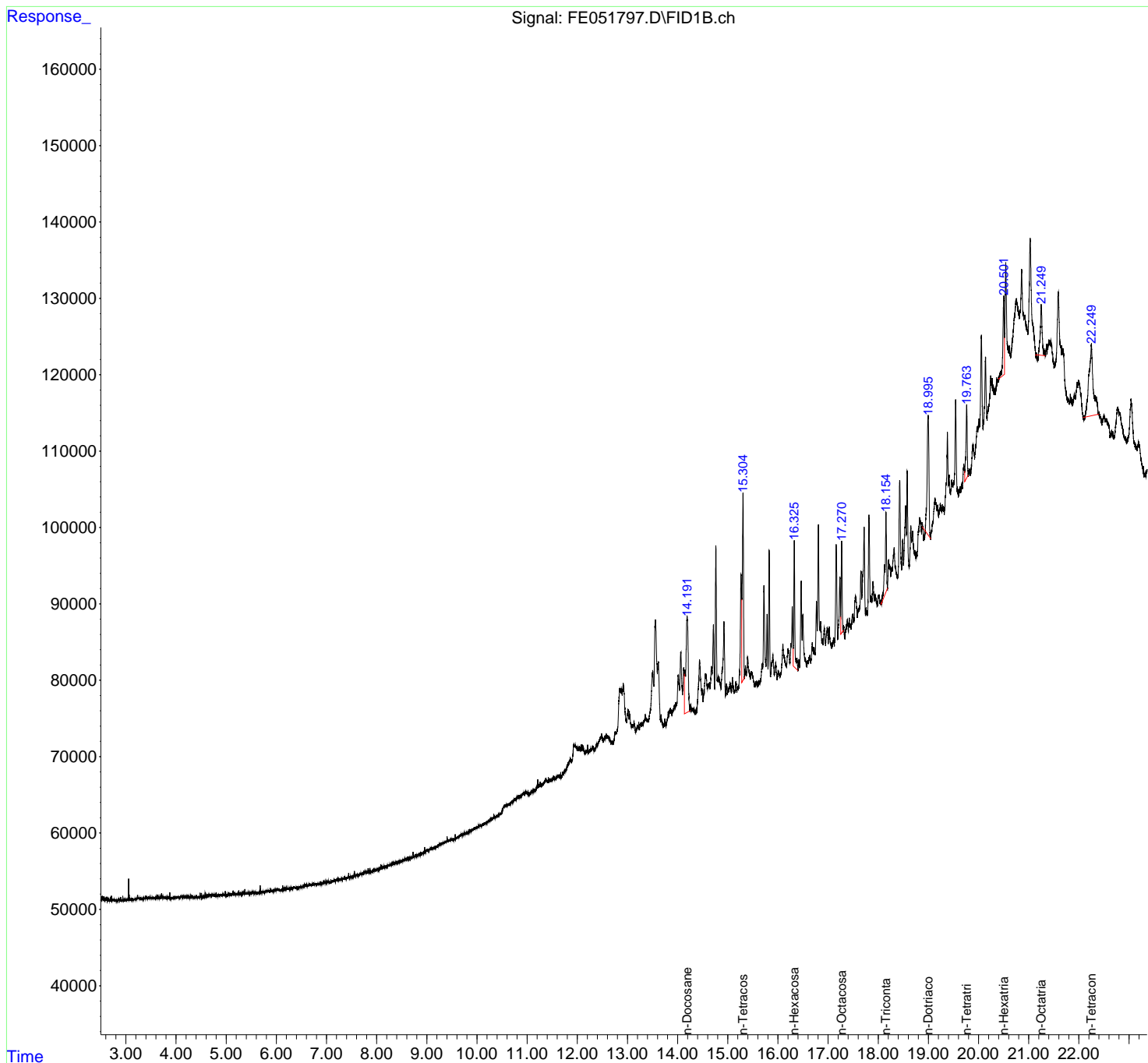
(m)=manual int.

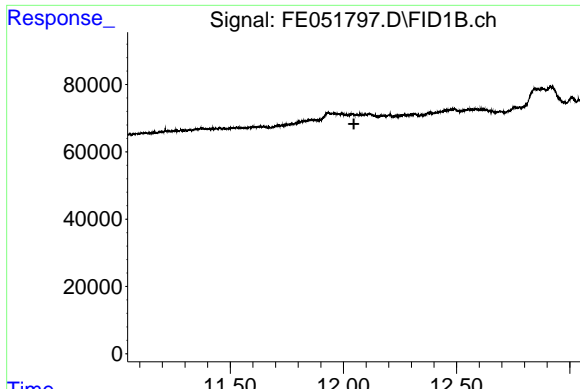
Data Path : Z:\pestpcbsrv\HPCHEM1\FID\_E\Data\FE123024AL\  
 Data File : FE051797.D  
 Signal(s) : FID1B.ch  
 Acq On : 30 Dec 2024 08:19  
 Operator : YP\AJ  
 Sample : MECL2  
 Misc :  
 ALS Vial : 1 Sample Multiplier: 1

Instrument :  
 FID\_E  
 ClientSampleId :

Integration File: autoint1.e  
 Quant Time: Dec 31 02:10:35 2024  
 Quant Method : Z:\pestpcbsrv\HPCHEM1\FID\_E\methods\Aliphatic EPH 122724.M  
 Quant Title : GC Extractables  
 QLast Update : Mon Dec 30 09:52:06 2024  
 Response via : Initial Calibration  
 Integrator: ChemStation

Volume Inj. : 1 ul  
 Signal Phase : Rxi-1ms  
 Signal Info : 20M x 0.18mm x 0.18um

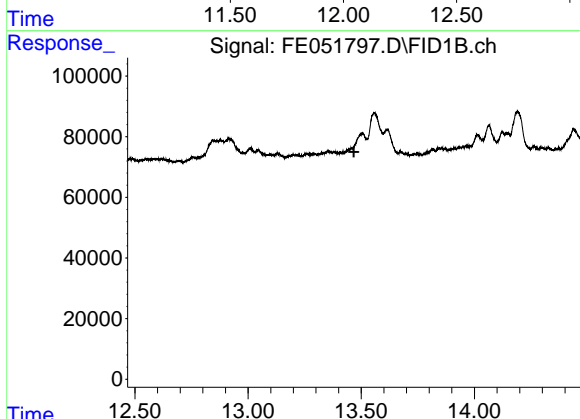




#9 ortho-Terphenyl (SURR)

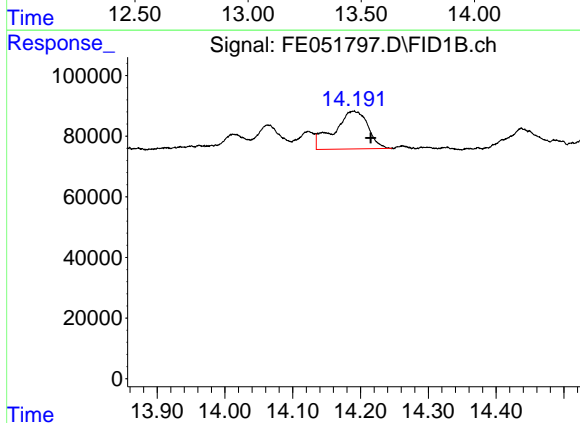
R.T.: 0.000 min  
 Exp R.T.: 12.046 min  
 Response: 0  
 Conc: N.D.

Instrument :  
 FID\_E  
 ClientSampleId :



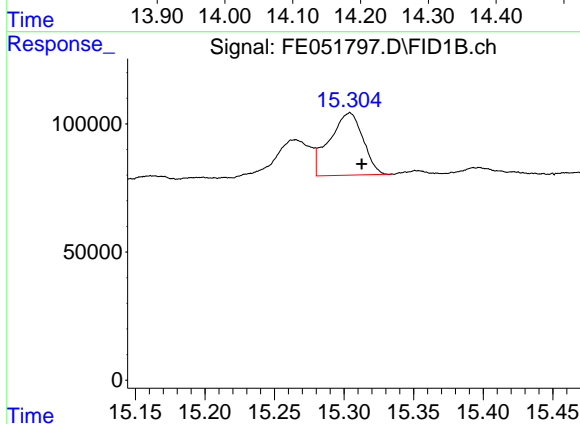
#12 1-chlorooctadecane (SURR)

R.T.: 0.000 min  
 Exp R.T.: 13.468 min  
 Response: 0  
 Conc: N.D.



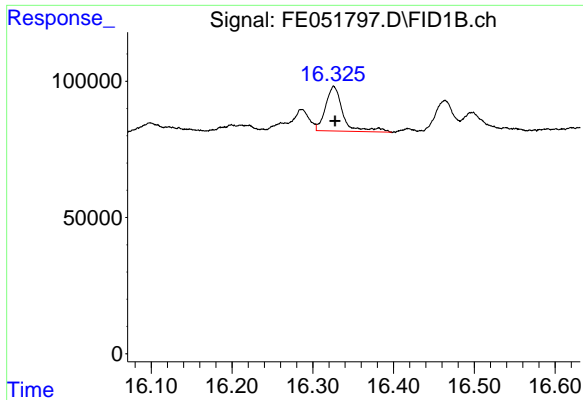
#13 n-Docosane (C22)

R.T.: 14.190 min  
 Delta R.T.: -0.026 min  
 Response: 432222  
 Conc: 3.27 ug/ml



#14 n-Tetracosane (C24)

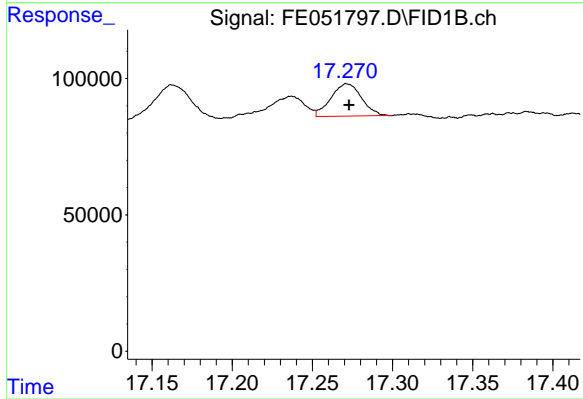
R.T.: 15.304 min  
 Delta R.T.: -0.009 min  
 Response: 406967  
 Conc: 3.14 ug/ml



#15 n-Hexacosane (C26)

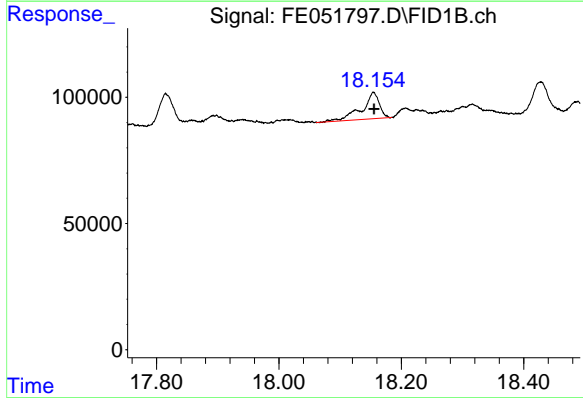
R.T.: 16.326 min  
 Delta R.T.: -0.002 min  
 Response: 246020  
 Conc: 1.96 ug/ml

Instrument :  
 FID\_E  
 ClientSampleId :



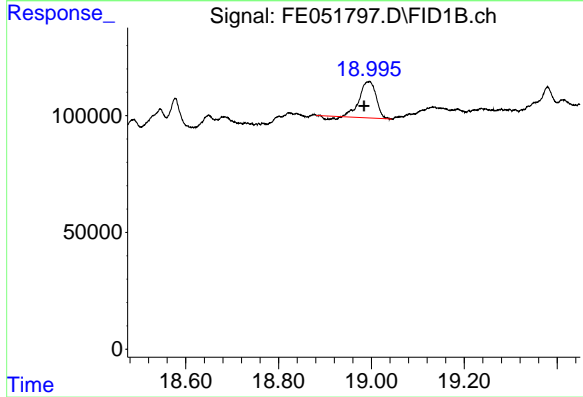
#16 n-Octacosane (C28)

R.T.: 17.272 min  
 Delta R.T.: -0.001 min  
 Response: 157281  
 Conc: 1.30 ug/ml



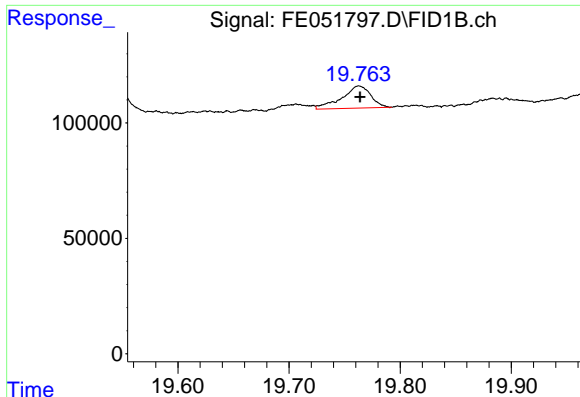
#17 n-Tricontane (C30)

R.T.: 18.155 min  
 Delta R.T.: 0.000 min  
 Response: 205477  
 Conc: 1.71 ug/ml



#18 n-Dotriacontane (C32)

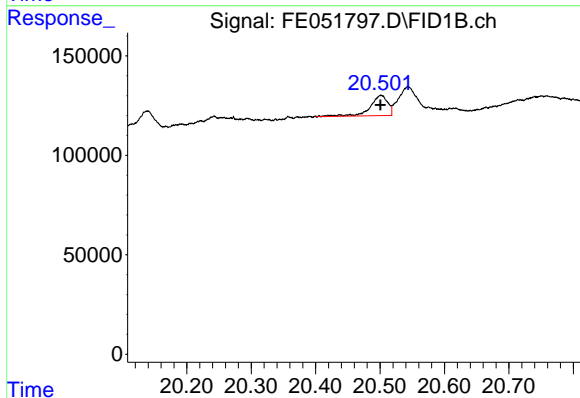
R.T.: 18.994 min  
 Delta R.T.: 0.010 min  
 Response: 372897  
 Conc: 3.26 ug/ml



#19 n-Tetratriacontane (C34)

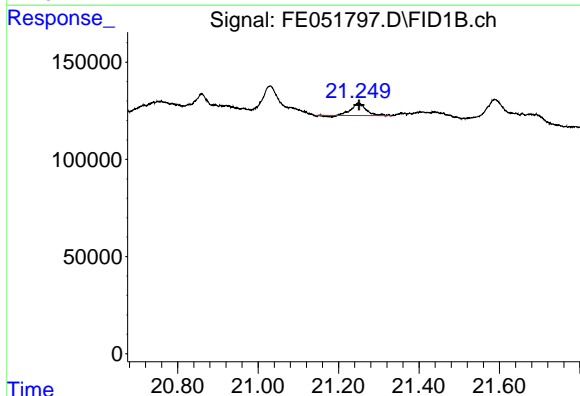
R.T.: 19.763 min  
 Delta R.T.: 0.000 min  
 Response: 173331  
 Conc: 1.72 ug/ml

Instrument :  
 FID\_E  
 ClientSampleId :



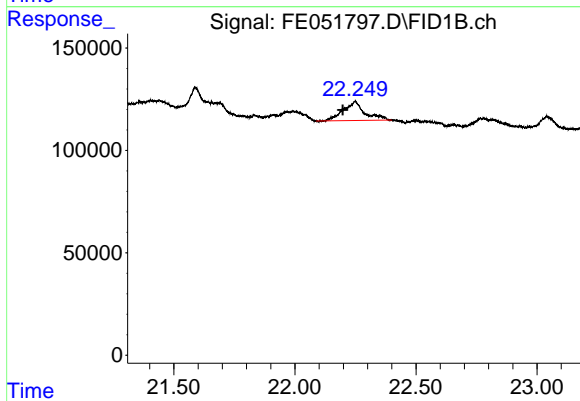
#20 n-Hexatriacontane (C36)

R.T.: 20.501 min  
 Delta R.T.: 0.000 min  
 Response: 192789  
 Conc: 2.16 ug/ml



#21 n-Octatriacontane (C38)

R.T.: 21.250 min  
 Delta R.T.: -0.001 min  
 Response: 161707  
 Conc: 1.88 ug/ml



#22 n-Tetracontane (C40)

R.T.: 22.249 min  
 Delta R.T.: 0.052 min  
 Response: 571508  
 Conc: 6.48 ug/ml