

Data Path : Z:\pestpcbsrv\HPCHEM1\FID_E\Data\FE123024AL\
 Data File : FE051808.D
 Signal(s) : FID1B.ch
 Acq On : 30 Dec 2024 14:52
 Operator : YP\AJ
 Sample : PB165899BL
 Misc :
 ALS Vial : 17 Sample Multiplier: 1

Instrument :
 FID_E
 ClientSampleId :

Integration File: autoint1.e
 Quant Time: Dec 31 02:14:58 2024
 Quant Method : Z:\pestpcbsrv\HPCHEM1\FID_E\methods\Aliphatic EPH 122724.M
 Quant Title : GC Extractables
 QLast Update : Mon Dec 30 09:52:06 2024
 Response via : Initial Calibration
 Integrator: ChemStation

Volume Inj. : 1 ul
 Signal Phase : Rxi-1ms
 Signal Info : 20M x 0.18mm x 0.18um

Compound	R.T.	Response	Conc Units

System Monitoring Compounds			
9) S ortho-Terphenyl (SURR)	12.048	5195846	34.304 ug/ml
Spiked Amount	50.000	Recovery	= 68.61%
12) S 1-chlorooctadecane (S...	13.470	4324034	37.170 ug/ml
Spiked Amount	50.000	Recovery	= 74.34%

Target Compounds

(f)=RT Delta > 1/2 Window

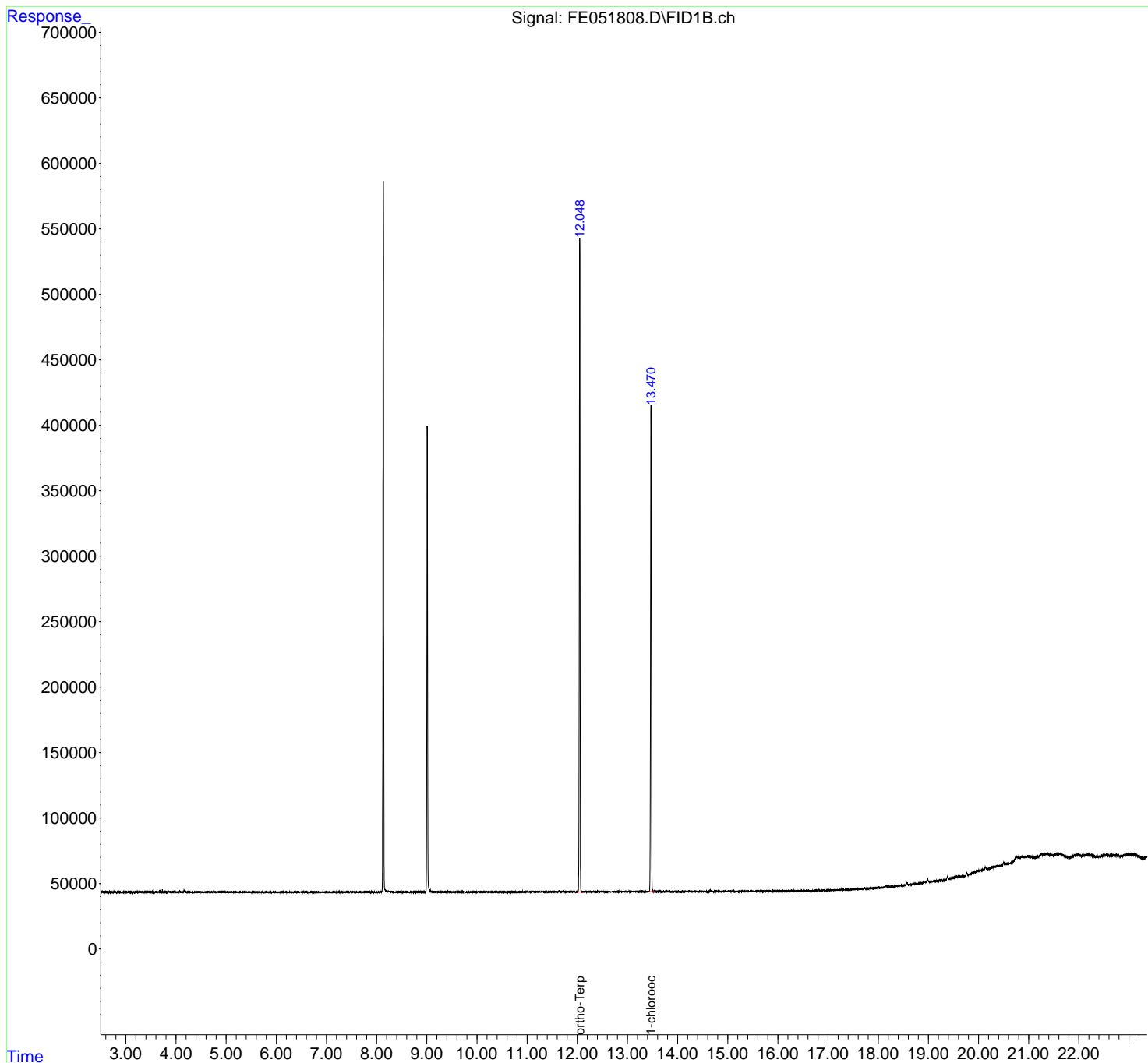
(m)=manual int.

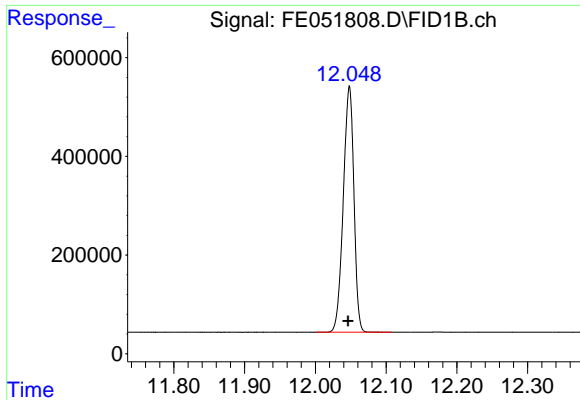
Data Path : Z:\pestpcbsrv\HPCHEM1\FID_E\Data\FE123024AL\
Data File : FE051808.D
Signal(s) : FID1B.ch
Acq On : 30 Dec 2024 14:52
Operator : YP\AJ
Sample : PB165899BL
Misc :
ALS Vial : 17 Sample Multiplier: 1

Instrument :
FID_E
ClientSampleId :

Integration File: autoint1.e
Quant Time: Dec 31 02:14:58 2024
Quant Method : Z:\pestpcbsrv\HPCHEM1\FID_E\methods\Aliphatic EPH 122724.M
Quant Title : GC Extractables
QLast Update : Mon Dec 30 09:52:06 2024
Response via : Initial Calibration
Integrator: ChemStation

Volume Inj. : 1 ul
Signal Phase : Rxi-1ms
Signal Info : 20M x 0.18mm x 0.18um

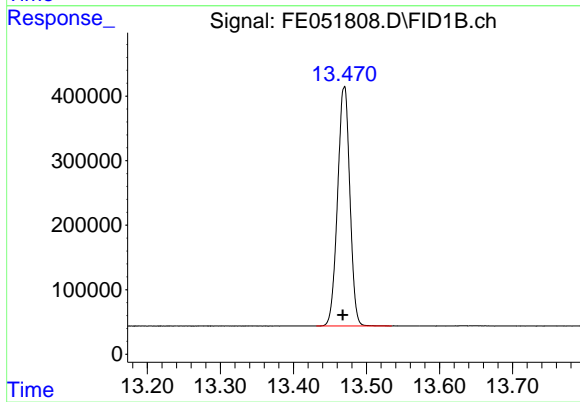




#9 ortho-Terphenyl (SURR)

R.T.: 12.048 min
Delta R.T.: 0.002 min
Response: 5195846
Conc: 34.30 ug/ml

Instrument :
FID_E
ClientSampleId :



#12 1-chlorooctadecane (SURR)

R.T.: 13.470 min
Delta R.T.: 0.002 min
Response: 4324034
Conc: 37.17 ug/ml