

Data Path : Z:\pestpcbsrv\HPCHEM1\FID\_E\Data\FE123024AL\  
 Data File : FE051800.D  
 Signal(s) : FID1B.ch  
 Acq On : 30 Dec 2024 09:50  
 Operator : YP\AJ  
 Sample : P5387-01DL 2X  
 Misc :  
 ALS Vial : 11 Sample Multiplier: 1

**Instrument :**  
 FID\_E  
**ClientSampleId :**  
 TR-05-122624DL

**Manual Integrations**  
**APPROVED**  
 Reviewed By :Yogesh Patel 12/31/2024  
 Supervised By :Ankita Jodhani 12/31/2024

Integration File: autoint1.e  
 Quant Time: Dec 31 02:11:51 2024  
 Quant Method : Z:\pestpcbsrv\HPCHEM1\FID\_E\methods\Aliphatic EPH 122724.M  
 Quant Title : GC Extractables  
 QLast Update : Mon Dec 30 09:52:06 2024  
 Response via : Initial Calibration  
 Integrator: ChemStation

Volume Inj. : 1 ul  
 Signal Phase : Rxi-1ms  
 Signal Info : 20M x 0.18mm x 0.18um

Compound	R.T.	Response	Conc Units
System Monitoring Compounds			
9) S ortho-Terphenyl (SURR)	12.049	3266634	21.567 ug/mlm
Spiked Amount	50.000	Recovery =	43.13%
12) S 1-chlorooctadecane (S...	13.470	2821853	24.257 ug/mlm
Spiked Amount	50.000	Recovery =	48.51%

Target Compounds

(f)=RT Delta > 1/2 Window

(m)=manual int.

Data Path : Z:\pestpcbsrv\HPCHEM1\FID\_E\Data\FE123024AL\  
Data File : FE051800.D  
Signal(s) : FID1B.ch  
Acq On : 30 Dec 2024 09:50  
Operator : YP\AJ  
Sample : P5387-01DL 2X  
Misc :  
ALS Vial : 11 Sample Multiplier: 1

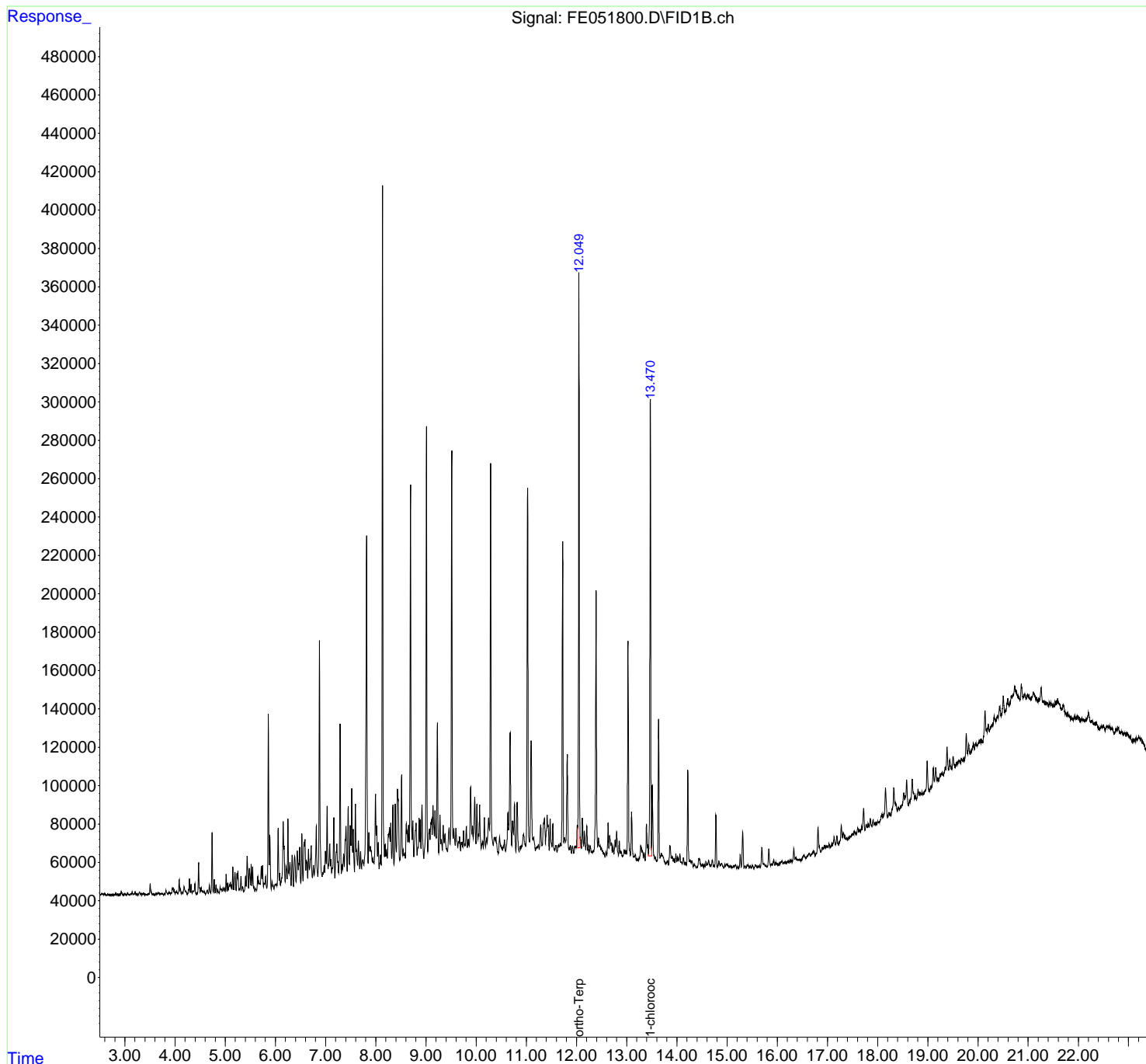
Instrument :  
FID\_E  
ClientSampleId :  
TR-05-122624DL

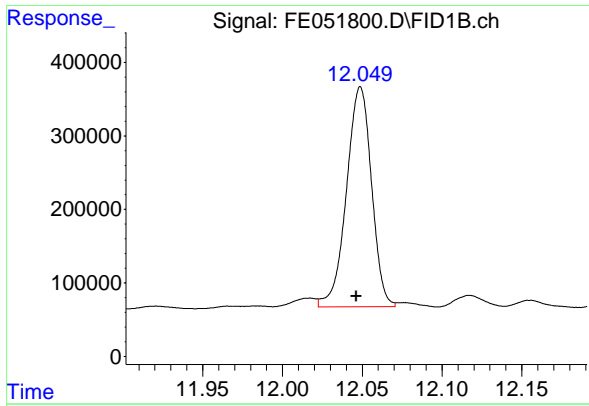
Manual Integrations  
APPROVED

Reviewed By :Yogesh Patel 12/31/2024  
Supervised By :Ankita Jodhani 12/31/2024

Integration File: autoint1.e  
Quant Time: Dec 31 02:11:51 2024  
Quant Method : Z:\pestpcbsrv\HPCHEM1\FID\_E\methods\Aliphatic EPH 122724.  
Quant Title : GC Extractables  
QLast Update : Mon Dec 30 09:52:06 2024  
Response via : Initial Calibration  
Integrator: ChemStation

Volume Inj. : 1 ul  
Signal Phase : Rxi-1ms  
Signal Info : 20M x 0.18mm x 0.18um





#9 ortho-Terphenyl (SURR)

R.T.: 12.049 min  
 Delta R.T.: 0.002 min  
 Response: 3266634  
 Conc: 21.57 ug/ml

Instrument :

FID\_E

ClientSampleId :

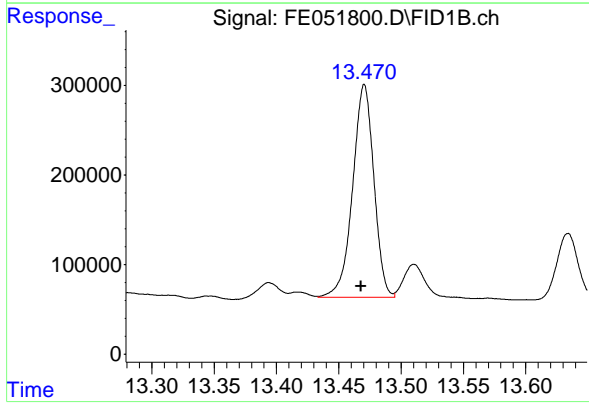
TR-05-122624DL

Manual Integrations

APPROVED

Reviewed By :Yogesh Patel 12/31/2024

Supervised By :Ankita Jodhani 12/31/2024



#12 1-chlorooctadecane (SURR)

R.T.: 13.470 min  
 Delta R.T.: 0.002 min  
 Response: 2821853  
 Conc: 24.26 ug/ml m