

Data Path : Z:\pestpcbsrv\HPCHEM1\FID\_E\Data\FE061918AL\  
 Data File : FE027768.D  
 Signal(s) : FID1B.CH  
 Acq On : 20 Jun 2018 8:49  
 Operator : UA/AJ  
 Sample : J3566-02RE  
 Misc :  
 ALS Vial : 7 Sample Multiplier: 1

Integration File: autoint1.e  
 Quant Time: Jun 20 10:09:27 2018  
 Quant Method : Z:\pestpcbsrv\HPCHEM1\FID\_E\methods\Alaphatic EPH 052118.M  
 Quant Title : GC Extractables  
 QLast Update : Mon May 21 17:13:22 2018  
 Response via : Initial Calibration  
 Integrator: ChemStation 6890 Scale Mode: Large solvent peaks clipped

Volume Inj. : 1 ul  
 Signal Phase : Rxi-lms  
 Signal Info : 20M x 0.18mm x 0.18um

Compound	R.T.	Response	Conc Units
-----			
System Monitoring Compounds			
12) S 1-chlorooctadecane (S...	13.585	1224667	7.311 ug/ml
Spiked Amount 50.000		Recovery =	14.62%

Target Compounds

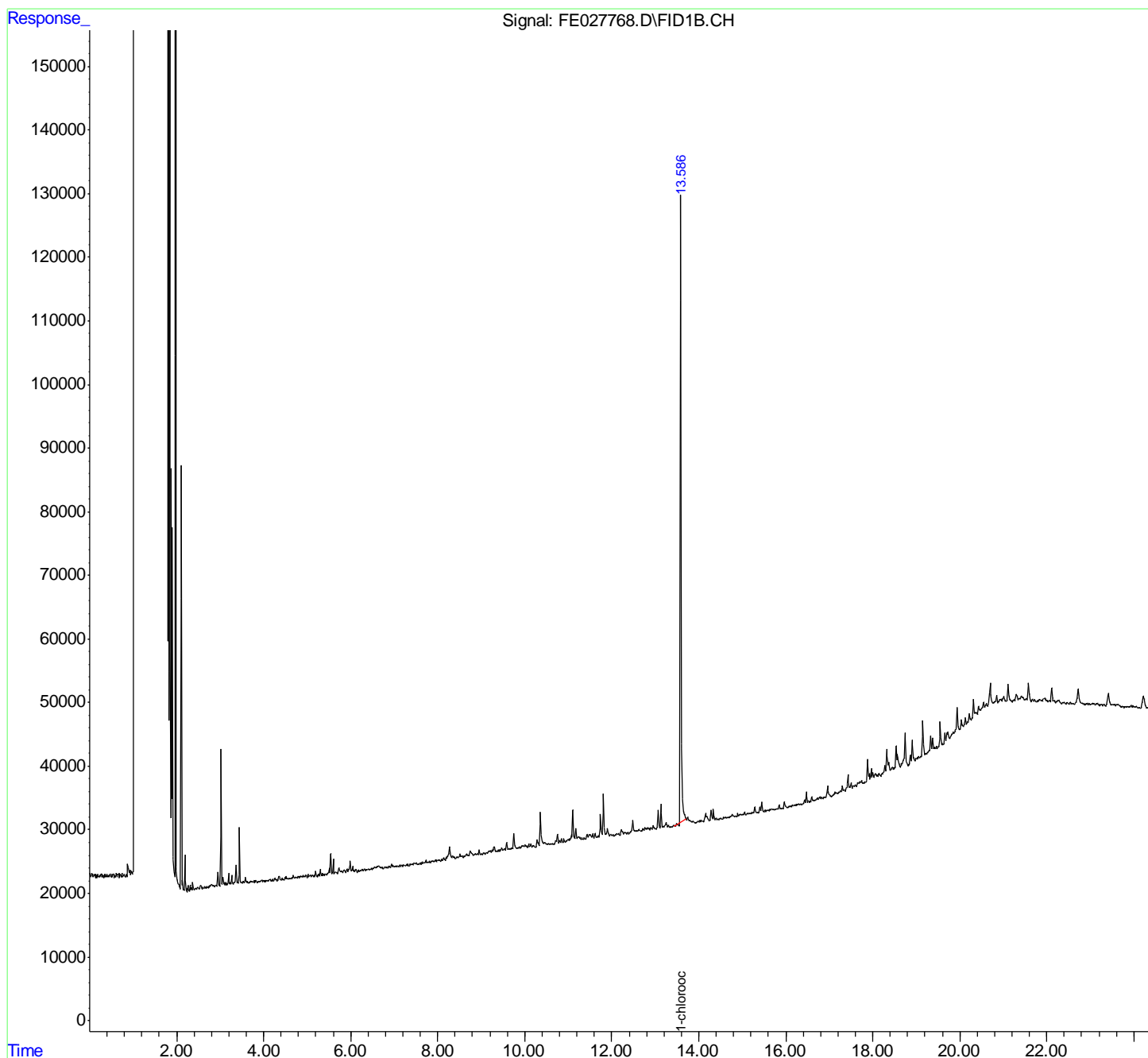
(f)=RT Delta > 1/2 Window

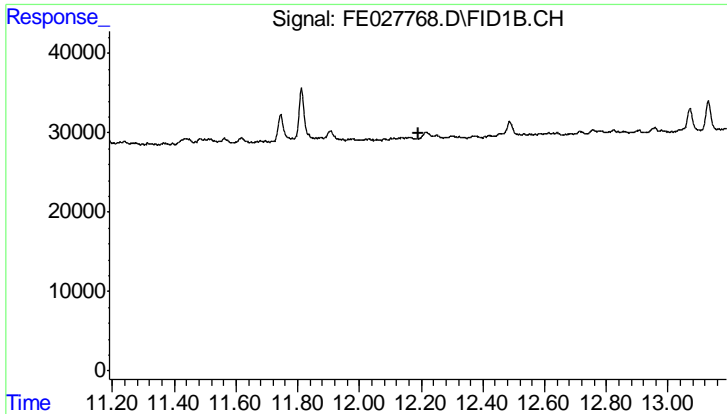
(m)=manual int.

Data Path : Z:\pestpcbsrv\HPCHEM1\FID\_E\Data\FE061918AL\  
 Data File : FE027768.D  
 Signal(s) : FID1B.CH  
 Acq On : 20 Jun 2018 8:49  
 Operator : UA/AJ  
 Sample : J3566-02RE  
 Misc :  
 ALS Vial : 7 Sample Multiplier: 1

Integration File: autoint1.e  
 Quant Time: Jun 20 10:09:27 2018  
 Quant Method : Z:\pestpcbsrv\HPCHEM1\FID\_E\methods\Alaphatic EPH 052118.M  
 Quant Title : GC Extractables  
 QLast Update : Mon May 21 17:13:22 2018  
 Response via : Initial Calibration  
 Integrator: ChemStation 6890 Scale Mode: Large solvent peaks clipped

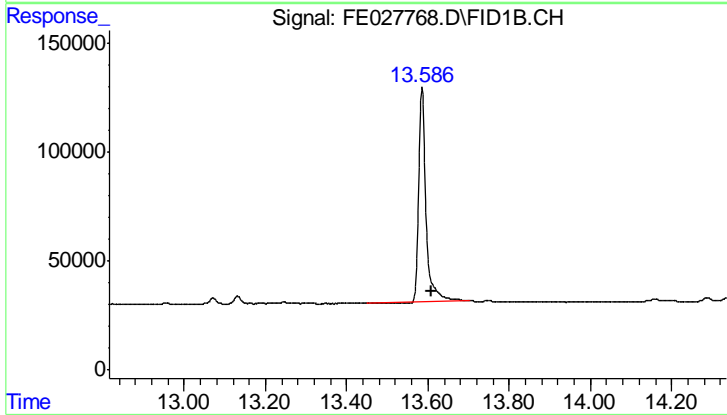
Volume Inj. : 1 ul  
 Signal Phase : Rxi-lms  
 Signal Info : 20M x 0.18mm x 0.18um





#9 ortho-Terphenyl (SURR)

R.T.: 0.000 min  
Exp R.T.: 12.190 min  
Response: 0  
Conc: N.D.



#12 1-chlorooctadecane (SURR)

R.T.: 13.585 min  
Delta R.T.: -0.022 min  
Response: 1224667  
Conc: 7.31 ug/ml