

Data Path : Z:\pestpcbsrv\HPCHEM1\FID\_E\Data\FE061918AL\  
Data File : FE027775.D  
Signal(s) : FID1B.CH  
Acq On : 20 Jun 2018 12:54  
Operator : UA/AJ  
Sample : J3566-14RE  
Misc :  
ALS Vial : 13 Sample Multiplier: 1

Integration File: autoint1.e  
Quant Time: Jun 20 14:55:07 2018  
Quant Method : Z:\pestpcbsrv\HPCHEM1\FID\_E\methods\Alaphatic EPH 052118.M  
Quant Title : GC Extractables  
QLast Update : Mon May 21 17:13:22 2018  
Response via : Initial Calibration  
Integrator: ChemStation 6890 Scale Mode: Large solvent peaks clipped

Volume Inj. : 1 ul  
Signal Phase : Rxi-lms  
Signal Info : 20M x 0.18mm x 0.18um

Compound	R.T.	Response	Conc Units
-----			
System Monitoring Compounds			
12) S 1-chlorooctadecane (S...	13.585	1819629	10.863 ug/ml
Spiked Amount	50.000	Recovery	= 21.73%

Target Compounds

-----

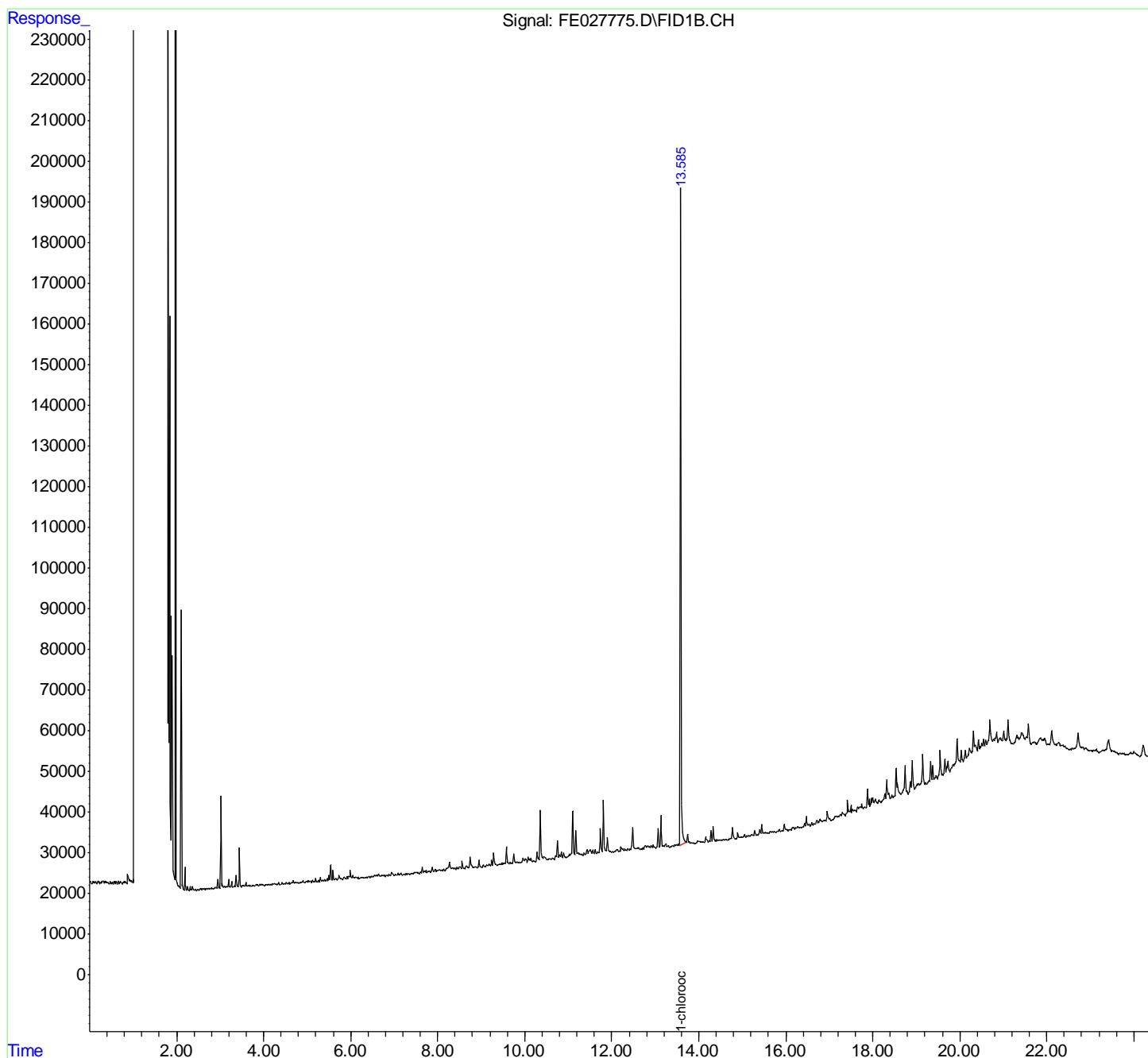
(f)=RT Delta > 1/2 Window

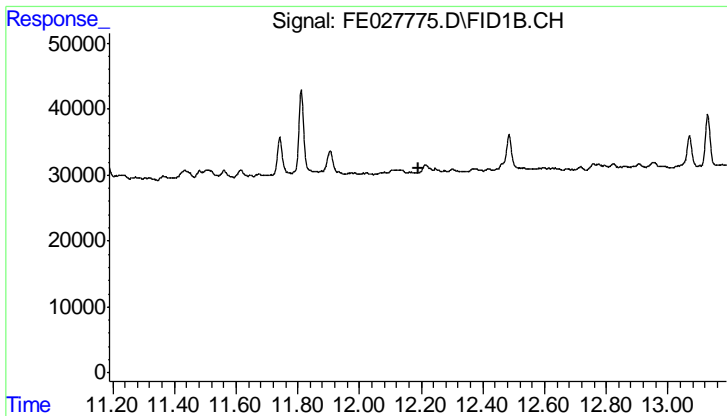
(m)=manual int.

Data Path : Z:\pestpcbsrv\HPCHEM1\FID\_E\Data\FE061918AL\  
Data File : FE027775.D  
Signal(s) : FID1B.CH  
Acq On : 20 Jun 2018 12:54  
Operator : UA/AJ  
Sample : J3566-14RE  
Misc :  
ALS Vial : 13 Sample Multiplier: 1

Integration File: autoint1.e  
Quant Time: Jun 20 14:55:07 2018  
Quant Method : Z:\pestpcbsrv\HPCHEM1\FID\_E\methods\Alaphatic EPH 052118.M  
Quant Title : GC Extractables  
QLast Update : Mon May 21 17:13:22 2018  
Response via : Initial Calibration  
Integrator: ChemStation 6890 Scale Mode: Large solvent peaks clipped

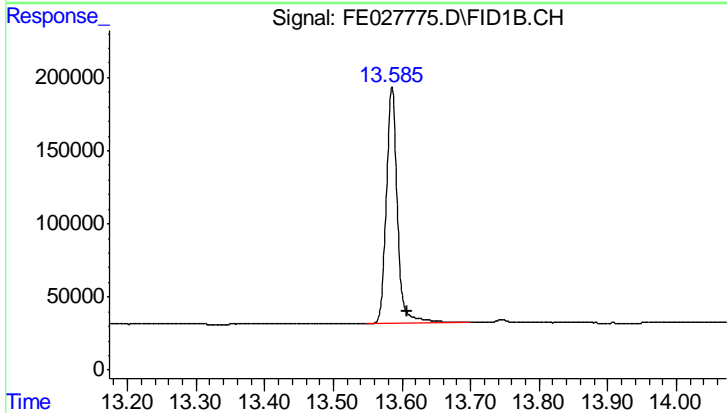
Volume Inj. : 1 ul  
Signal Phase : Rxi-lms  
Signal Info : 20M x 0.18mm x 0.18um





#9 ortho-Terphenyl (SURR)

R.T.: 0.000 min  
Exp R.T.: 12.190 min  
Response: 0  
Conc: N.D.



#12 1-chlorooctadecane (SURR)

R.T.: 13.585 min  
Delta R.T.: -0.022 min  
Response: 1819629  
Conc: 10.86 ug/ml