

Data Path : P:\HPCHEM1\FID E\Data\FE012818\
 Data File : FE025946.D
 Signal(s) : FID1B.CH
 Acq On : 29 Jan 2018 5:35
 Operator : UA/AJ
 Sample : J1257-17 25X
 Misc :
 ALS Vial : 63 Sample Multiplier: 1

Integration File: autoint1.e
 Quant Time: Jan 29 06:18:51 2018
 Quant Method : P:\HPCHEM1\FID_E\methods\FE012518.M
 Quant Title :
 QLast Update : Sat Jan 27 14:10:49 2018
 Response via : Initial Calibration
 Integrator: ChemStation 6890 Scale Mode: Large solvent peaks clipped

Volume Inj. : 1uL
 Signal Phase : Rxi-lms
 Signal Info : 20mx0.18mmx0.18um

Compound	R.T.	Response	Conc Units
----------	------	----------	------------

 System Monitoring Compounds

Target Compounds

10)	N-TETRACOSANE	14.967	272949	1.529 ug/ml
14)	N-DOTRIACONTANE	18.666	137840	0.900 ug/ml
15)	N-TETRATRIACONTANE	19.449	320675	2.456 ug/ml
16)	N-HEXATRIACONTANE	20.186	97117	0.899 ug/ml

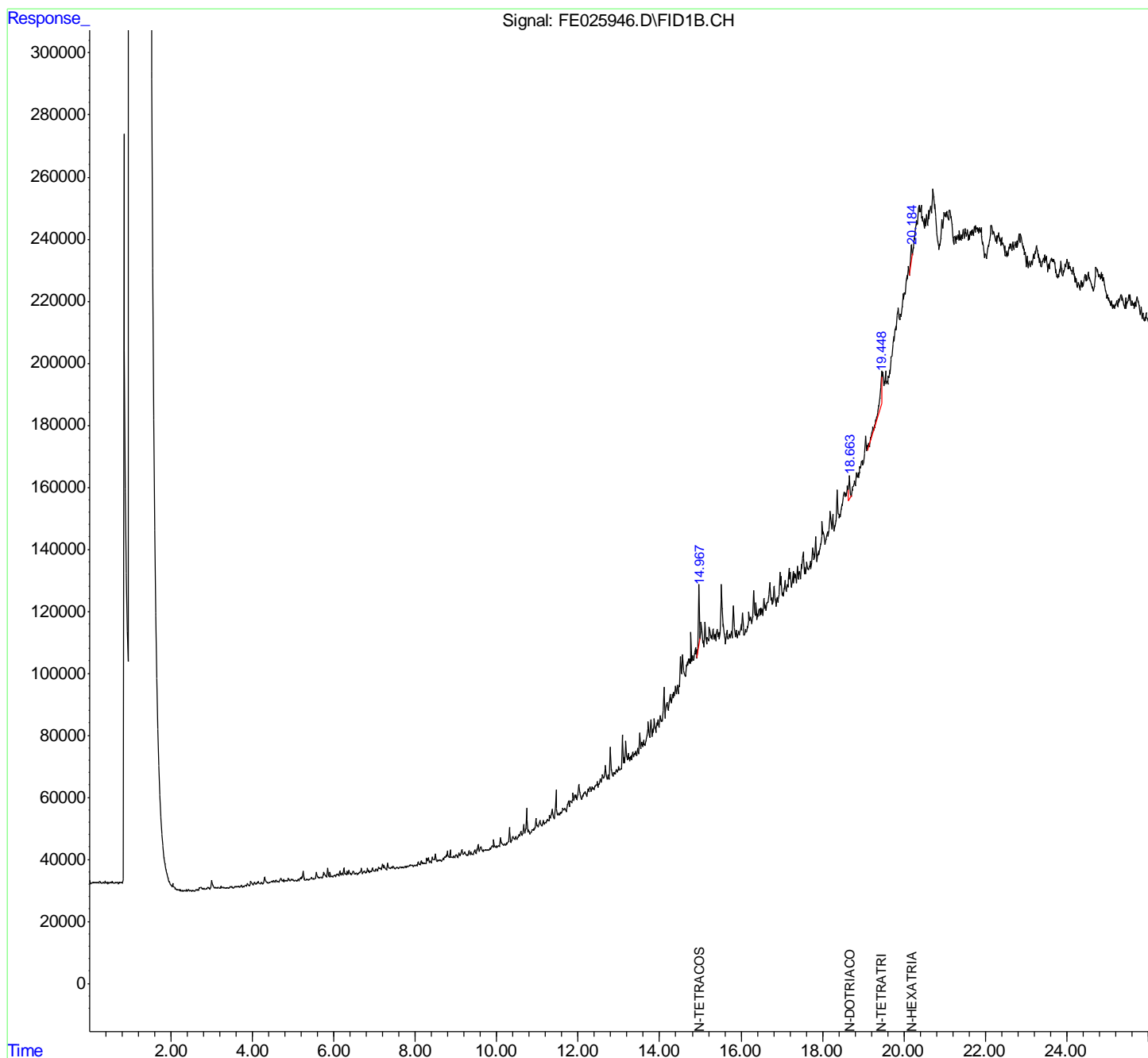
(f)=RT Delta > 1/2 Window

(m)=manual int.

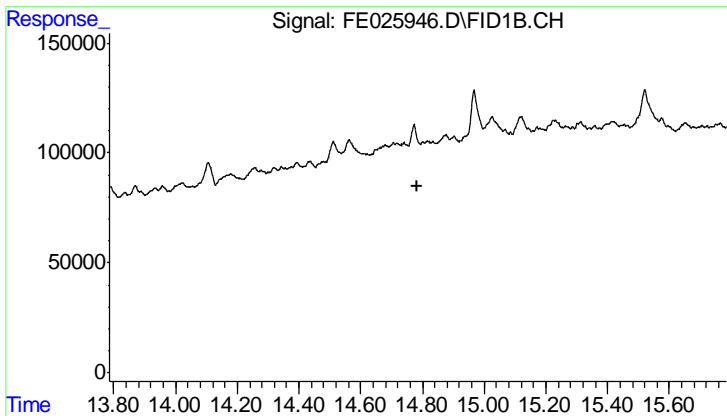
Data Path : P:\HPCHEM1\FID E\Data\FE012818\
 Data File : FE025946.D
 Signal(s) : FID1B.CH
 Acq On : 29 Jan 2018 5:35
 Operator : UA/AJ
 Sample : J1257-17 25X
 Misc :
 ALS Vial : 63 Sample Multiplier: 1

Integration File: autoint1.e
 Quant Time: Jan 29 06:18:51 2018
 Quant Method : P:\HPCHEM1\FID_E\methods\FE012518.M
 Quant Title :
 QLast Update : Sat Jan 27 14:10:49 2018
 Response via : Initial Calibration
 Integrator: ChemStation 6890 Scale Mode: Large solvent peaks clipped

Volume Inj. : 1uL
 Signal Phase : Rxi-lms
 Signal Info : 20mx0.18mmx0.18um

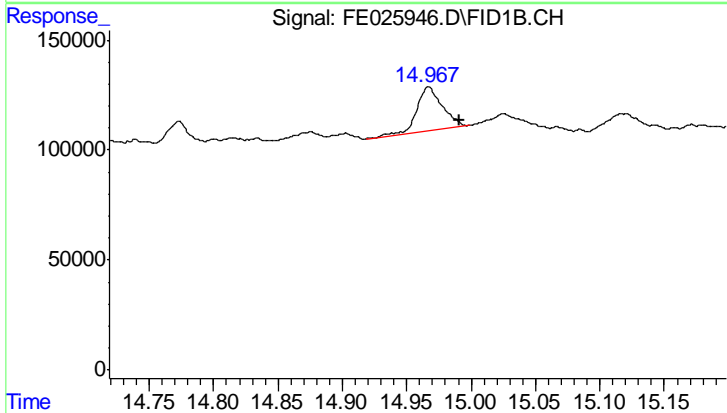


N-TETRACOS
 N-DOTRIACO
 N-TETRATRI
 N-HEXATRIA



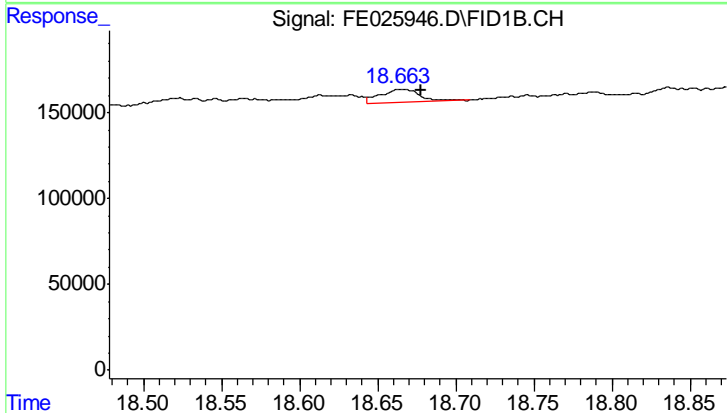
#9 TETRACOSANE-d50 (SURROGATE)

R.T.: 0.000 min
 Exp R.T.: 14.785 min
 Response: 0
 Conc: N.D.



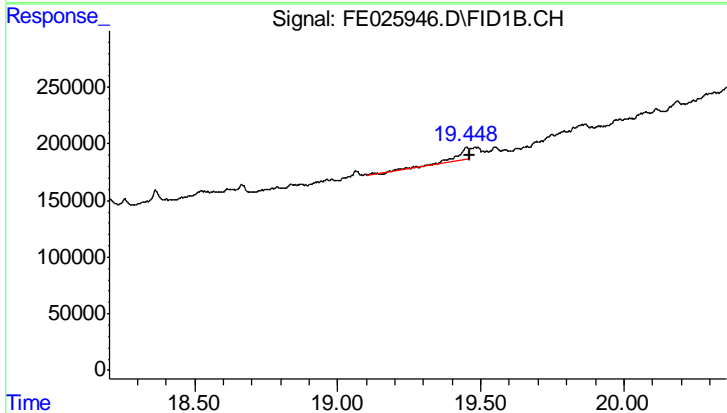
#10 N-TETRACOSANE

R.T.: 14.967 min
 Delta R.T.: -0.024 min
 Response: 272949
 Conc: 1.53 ug/ml



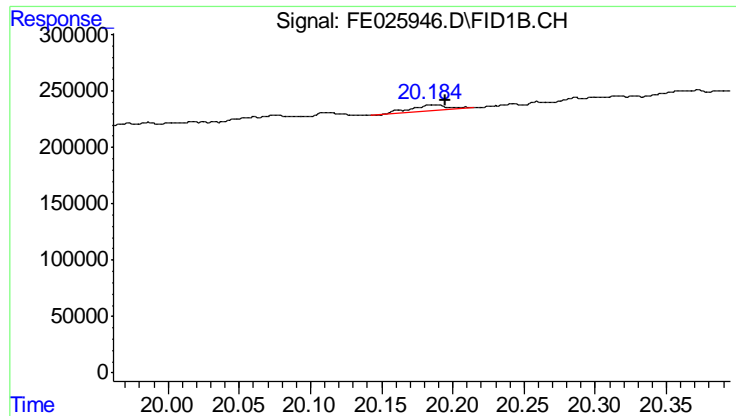
#14 N-DOTRIACONTANE

R.T.: 18.666 min
 Delta R.T.: -0.012 min
 Response: 137840
 Conc: 0.90 ug/ml



#15 N-TETRATRIACONTANE

R.T.: 19.449 min
 Delta R.T.: -0.010 min
 Response: 320675
 Conc: 2.46 ug/ml



#16 N-HEXATRIACONTANE

R.T.: 20.186 min
Delta R.T.: -0.009 min
Response: 97117
Conc: 0.90 ug/ml