

Data Path : Z:\pestpcbsrv\HPCHEM1\FID_E\Data\FE033022AL\
 Data File : FE035595.D
 Signal(s) : FID1B.CH
 Acq On : 31 Mar 2022 8:48
 Operator : YP\AJ
 Sample : N2158-02DL 10X
 Misc :
 ALS Vial : 23 Sample Multiplier: 1

Instrument :
 FID_E
 ClientSampleId :

Integration File: autoint1.e
 Quant Time: Mar 31 09:17:19 2022
 Quant Method : Z:\pestpcbsrv\HPCHEM1\FID_E\methods\Aliphatic EPH 032922.M
 Quant Title : GC Extractables
 QLast Update : Wed Mar 30 04:19:30 2022
 Response via : Initial Calibration
 Integrator: ChemStation 6890 Scale Mode: Large solvent peaks clipped

Volume Inj. : 1 ul
 Signal Phase : Rxi-1ms
 Signal Info : 20M x 0.18mm x 0.18um

Compound	R.T.	Response	Conc Units

System Monitoring Compounds			
9) S ortho-Terphenyl (SURR)	11.327	255185	2.396 ug/ml
Spiked Amount	50.000	Recovery =	4.79%
12) S 1-chlorooctadecane (S...	12.755	520172	6.431 ug/ml
Spiked Amount	50.000	Recovery =	12.86%
Target Compounds			
11) T n-Heneicosane (C21)	12.988f	53537	0.556 ug/ml
20) T n-Hexatriacontane (C36)	19.796	37853	0.531 ug/ml

(f)=RT Delta > 1/2 Window

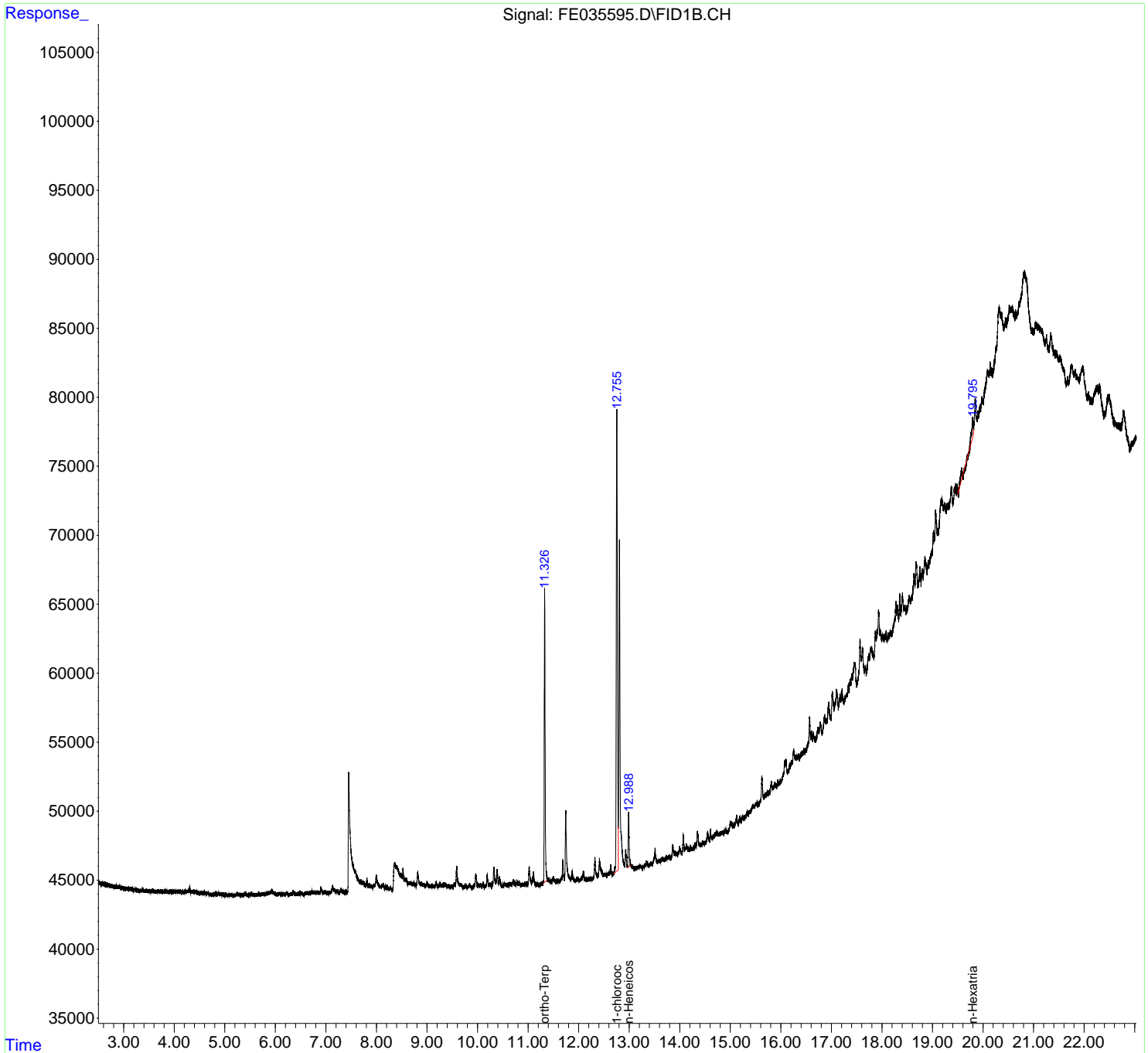
(m)=manual int.

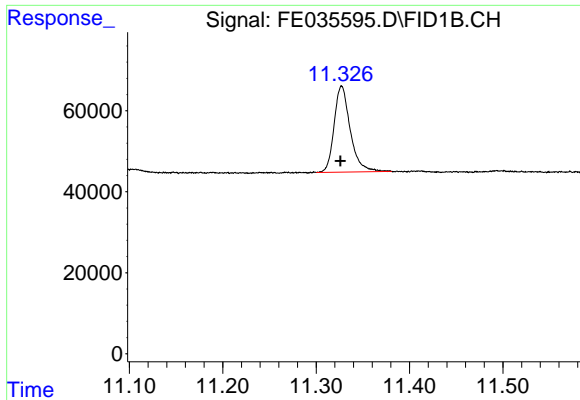
Data Path : Z:\pestpcbsrv\HPCHEM1\FID_E\Data\FE033022AL\
 Data File : FE035595.D
 Signal(s) : FID1B.CH
 Acq On : 31 Mar 2022 8:48
 Operator : YP\AJ
 Sample : N2158-02DL 10X
 Misc :
 ALS Vial : 23 Sample Multiplier: 1

Instrument :
 FID_E
 ClientSampleId :

Integration File: autoint1.e
 Quant Time: Mar 31 09:17:19 2022
 Quant Method : Z:\pestpcbsrv\HPCHEM1\FID_E\methods\Aliphatic EPH 032922.M
 Quant Title : GC Extractables
 QLast Update : Wed Mar 30 04:19:30 2022
 Response via : Initial Calibration
 Integrator: ChemStation 6890 Scale Mode: Large solvent peaks clipped

Volume Inj. : 1 ul
 Signal Phase : Rxi-1ms
 Signal Info : 20M x 0.18mm x 0.18um

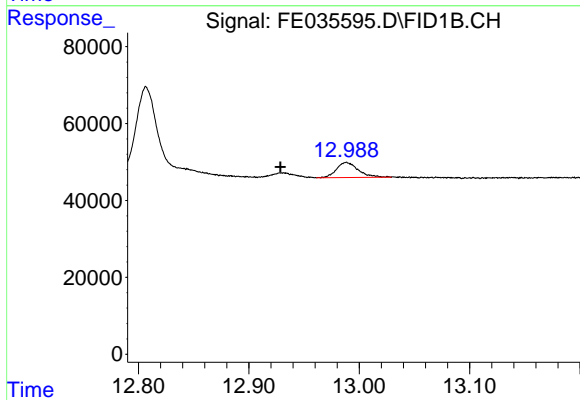




#9 ortho-Terphenyl (SURR)

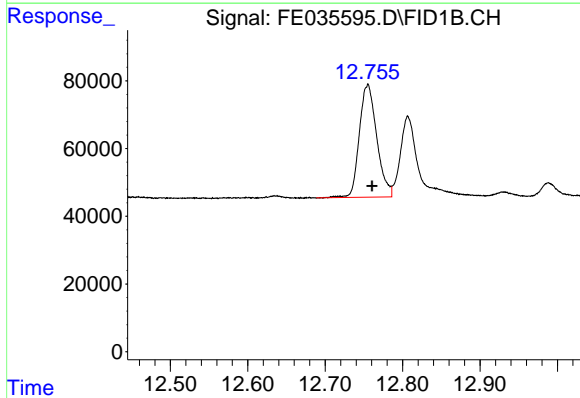
R.T.: 11.327 min
 Delta R.T.: 0.001 min
 Response: 255185
 Conc: 2.40 ug/ml

Instrument : FID_E
 ClientSampleId :



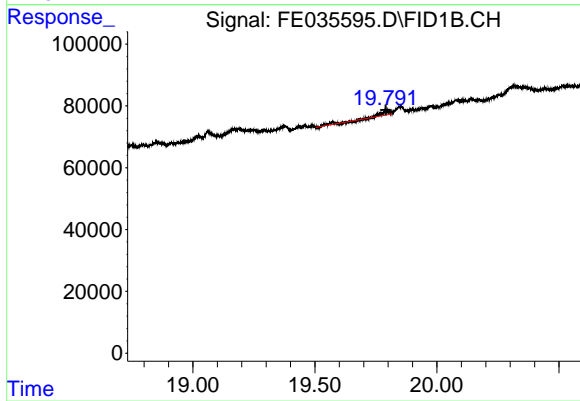
#11 n-Heneicosane (C21)

R.T.: 12.988 min
 Delta R.T.: 0.060 min
 Response: 53537
 Conc: 0.56 ug/ml



#12 1-chlorooctadecane (SURR)

R.T.: 12.755 min
 Delta R.T.: -0.006 min
 Response: 520172
 Conc: 6.43 ug/ml



#20 n-Hexatriacontane (C36)

R.T.: 19.796 min
 Delta R.T.: 0.005 min
 Response: 37853
 Conc: 0.53 ug/ml