

Data Path : Z:\pestpcbsrv\HPCHEM1\ECD_S\Data\PS033022\
 Data File : PS018838.D
 Signal(s) : Signal #1: ECD1A.ch Signal #2: ECD2B.ch
 Acq On : 30 Mar 2022 18:44
 Operator : AJ\MA
 Sample : HSTDCCC750
 Misc :
 ALS Vial : 5 Sample Multiplier: 1

Instrument :
 FID_E
 ClientSampleId :

Integration File signal 1: autoint1.e
 Integration File signal 2: autoint2.e
 Quant Time: Mar 31 03:02:44 2022
 Quant Method : Z:\pestpcbsrv\HPCHEM1\ECD_S\Method\PS033022.M
 Quant Title : 8080.M
 QLast Update : Thu Mar 31 02:39:40 2022
 Response via : Initial Calibration
 Integrator: ChemStation

Volume Inj. : 2 µl
 Signal #1 Phase : Rtx-CLPesticides Signal #2 Phase: Rtx-CLPesticides2
 Signal #1 Info : 30M x 0.32mm x0.5 Signal #2 Info : 30M x 0.32mm x 0.25µm

	Compound	RT#1	RT#2	Resp#1	Resp#2	ng/ml	ng/ml

System Monitoring Compounds							
4) S	2,4-DCAA	7.229	6.809	2221.8E6	511.8E6	751.585	749.469
Target Compounds							
1) T	Dalapon	3.029	2.536	3092.1E6	614.4E6	675.285	682.246
2) T	3,5-DICHL...	6.437	5.982	2919.1E6	745.8E6	690.851	701.126
3) T	4-Nitroph...	7.073f	6.424	754.5E6	277.4E6	729.998	677.244
5) T	DICAMBA	7.419	6.976	9274.2E6	2199.3E6	690.458	711.515
6) T	MCPD	7.590	7.074	762.1E6	176.2E6	70.338	70.820
7) T	MCPA	7.740	7.287	1029.8E6	240.8E6	69.456	70.002
8) T	DICHLORPROP	8.115	7.599	2359.8E6	558.6E6	690.293	702.374
9) T	2,4-D	8.349	7.892	2696.8E6	619.5E6	685.481	719.578
10) T	Pentachlo...	8.653	8.319	32861.7E6	7244.9E6	723.559	711.586
11) T	2,4,5-TP ...	9.207	8.681	14262.0E6	3154.4E6	702.076	718.467
12) T	2,4,5-T	9.492	9.059	14089.4E6	2860.0E6	716.965	729.002
13) T	2,4-DB	10.049	9.566	2136.2E6	392.2E6	742.153	732.390
14) T	DINOSEB	11.206	9.893	11397.2E6	2200.7E6	689.365	711.476
15) T	Picloram	11.033	10.877	18239.2E6	3072.1E6	718.468	727.675
16) T	DCPA	11.473	10.825	17655.3E6	3705.5E6	705.197	725.472

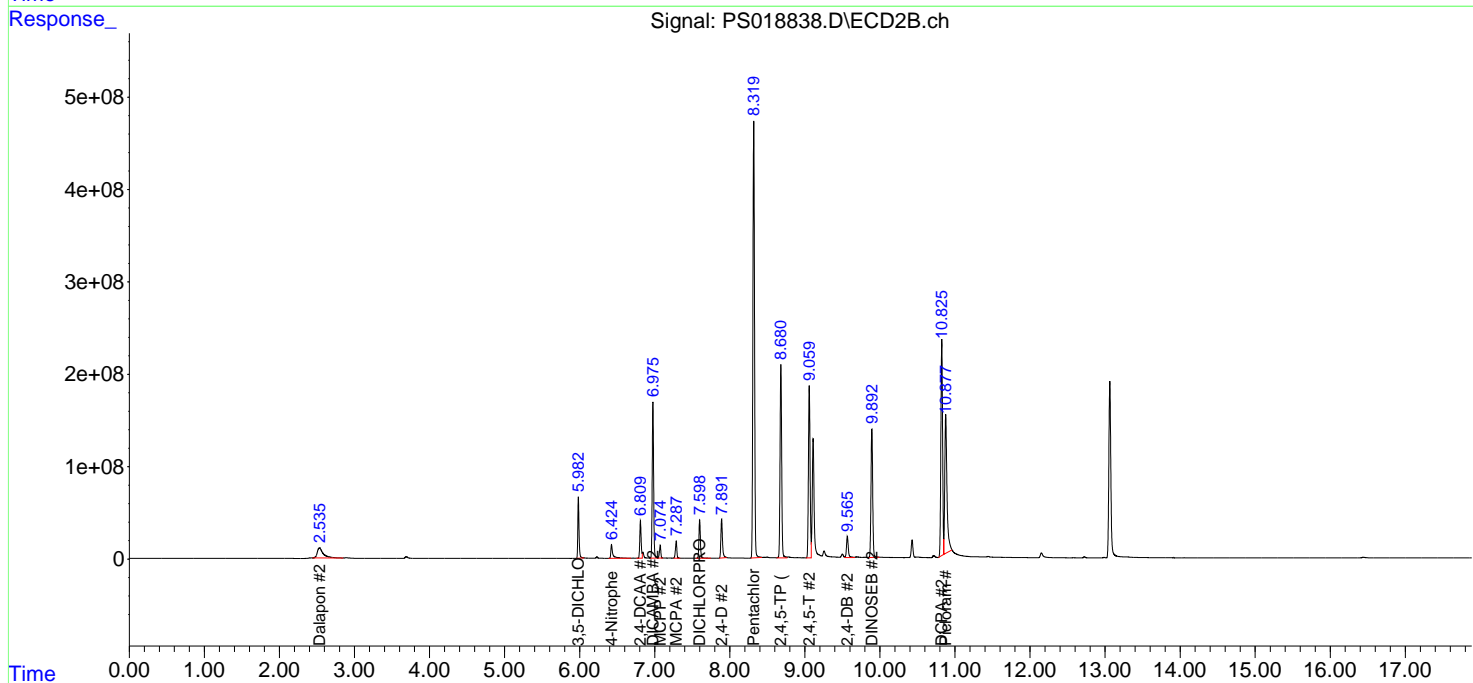
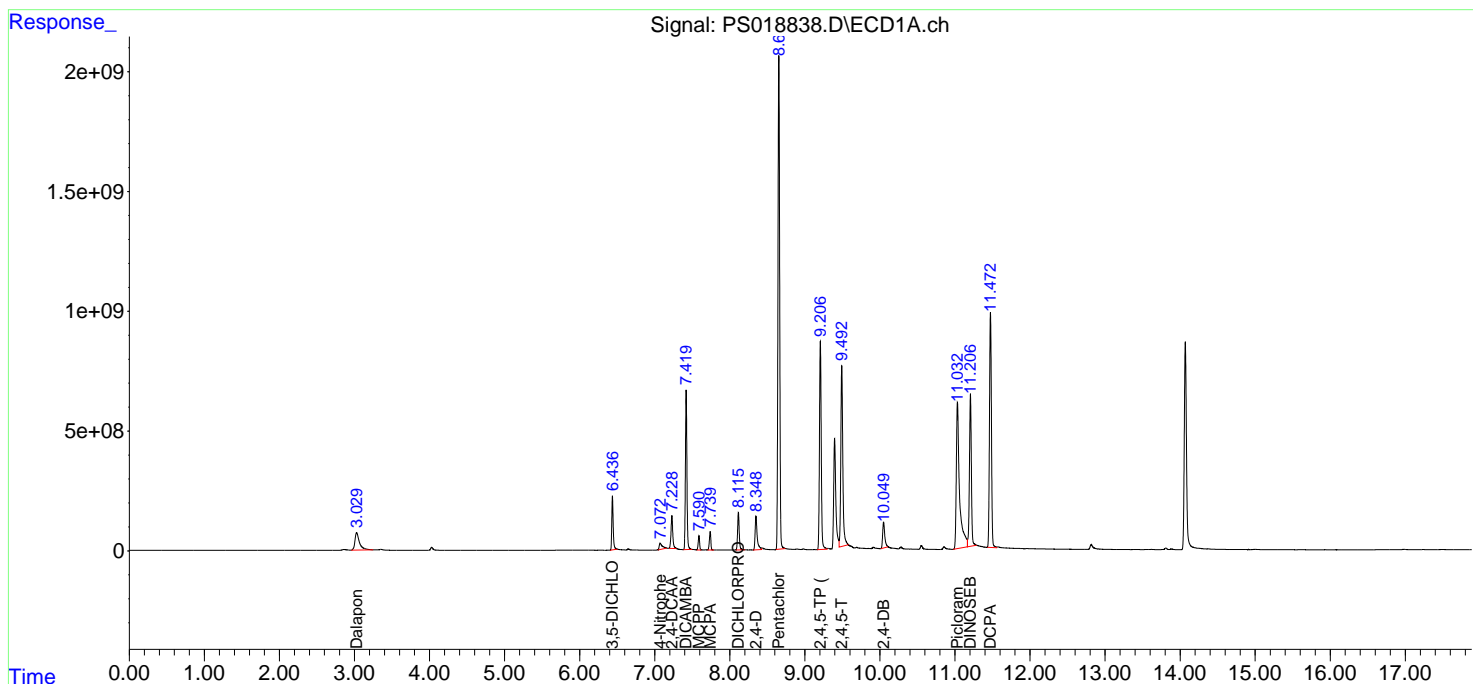
(f)=RT Delta > 1/2 Window (#)=Amounts differ by > 25% (m)=manual int.

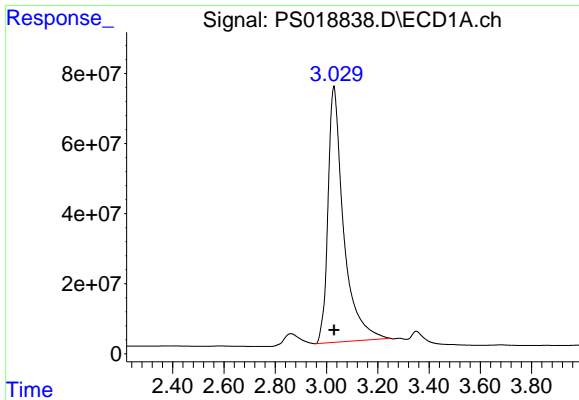
Data Path : Z:\pestpcbsrv\HPCHEM1\ECD_S\Data\PS033022\
 Data File : PS018838.D
 Signal(s) : Signal #1: ECD1A.ch Signal #2: ECD2B.ch
 Acq On : 30 Mar 2022 18:44
 Operator : AJ\MA
 Sample : HSTDCCC750
 Misc :
 ALS Vial : 5 Sample Multiplier: 1

Instrument :
 FID_E
 ClientSampleId :

Integration File signal 1: autoint1.e
 Integration File signal 2: autoint2.e
 Quant Time: Mar 31 03:02:44 2022
 Quant Method : Z:\pestpcbsrv\HPCHEM1\ECD_S\Method\PS033022.M
 Quant Title : 8080.M
 QLast Update : Thu Mar 31 02:39:40 2022
 Response via : Initial Calibration
 Integrator: ChemStation

Volume Inj. : 2 µl
 Signal #1 Phase : Rtx-CLPesticides Signal #2 Phase: Rtx-CLPesticides2
 Signal #1 Info : 30M x 0.32mm x 0.5 Signal #2 Info : 30M x 0.32mm x 0.25µm

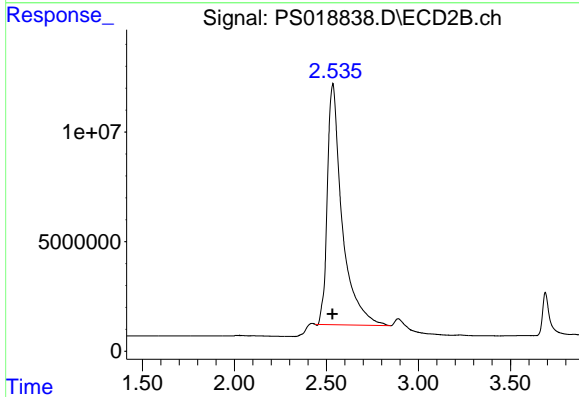




#1 Dalapon

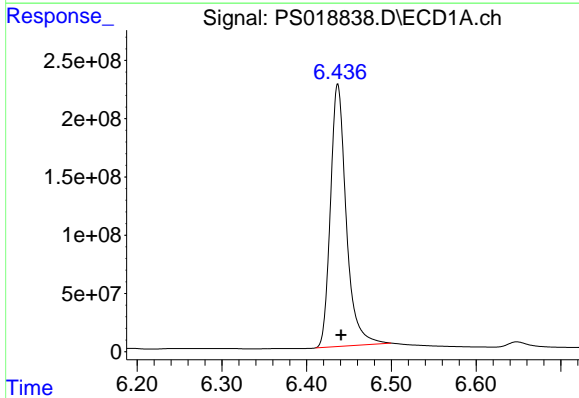
R.T.: 3.029 min
 Delta R.T.: 0.000 min
 Response: 3092058939
 Conc: 675.29 ng/ml

Instrument :
 FID_E
 ClientSampleId :



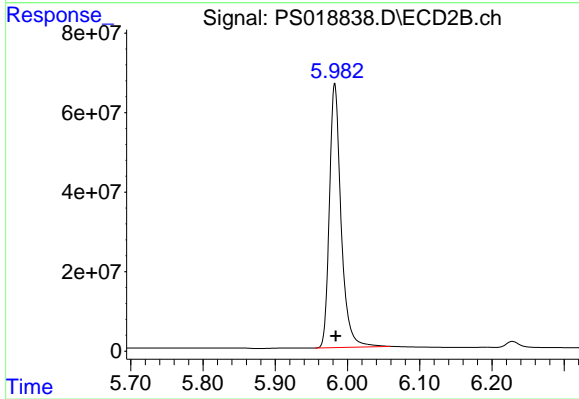
#1 Dalapon

R.T.: 2.536 min
 Delta R.T.: 0.002 min
 Response: 614440119
 Conc: 682.25 ng/ml



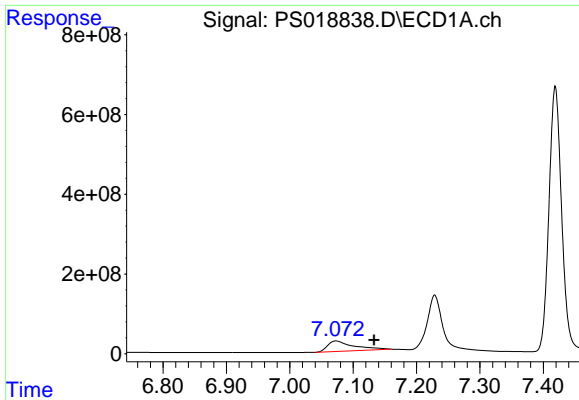
#2 3,5-DICHLOROBENZOIC ACID

R.T.: 6.437 min
 Delta R.T.: -0.004 min
 Response: 2919053644
 Conc: 690.85 ng/ml



#2 3,5-DICHLOROBENZOIC ACID

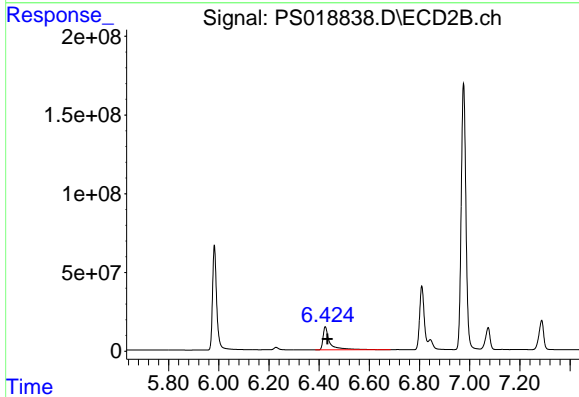
R.T.: 5.982 min
 Delta R.T.: -0.001 min
 Response: 745774628
 Conc: 701.13 ng/ml



#3 4-Nitrophenol

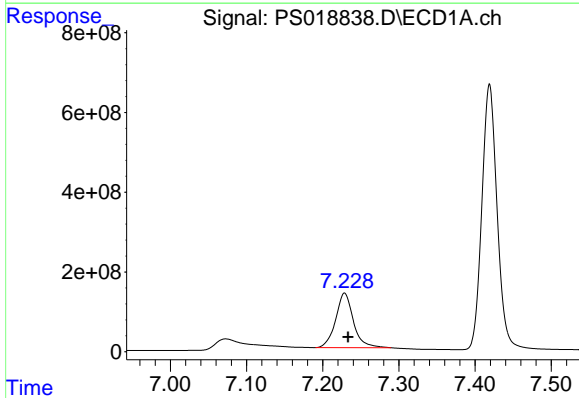
R.T.: 7.073 min
 Delta R.T.: -0.060 min
 Response: 754518231
 Conc: 730.00 ng/ml

Instrument :
 FID_E
 ClientSampleId :



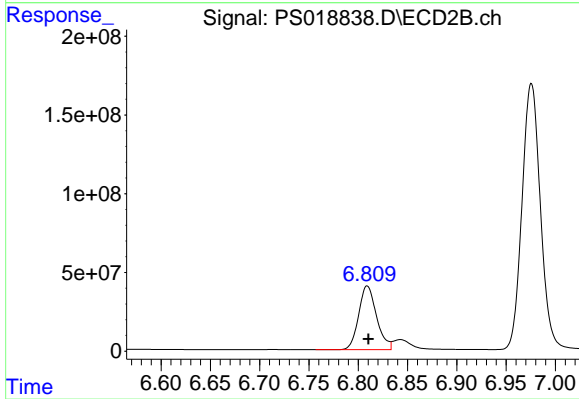
#3 4-Nitrophenol

R.T.: 6.424 min
 Delta R.T.: -0.009 min
 Response: 277422103
 Conc: 677.24 ng/ml



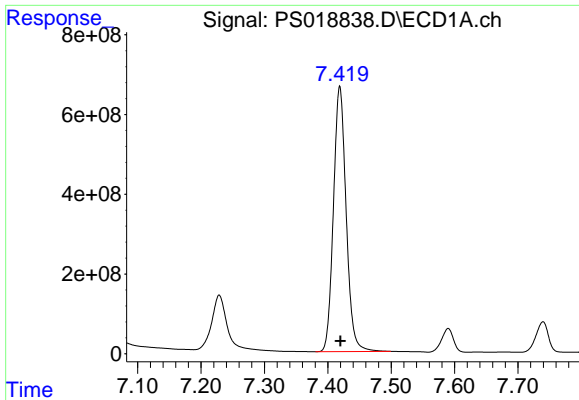
#4 2,4-DCAA

R.T.: 7.229 min
 Delta R.T.: -0.005 min
 Response: 2221752528
 Conc: 751.58 ng/ml



#4 2,4-DCAA

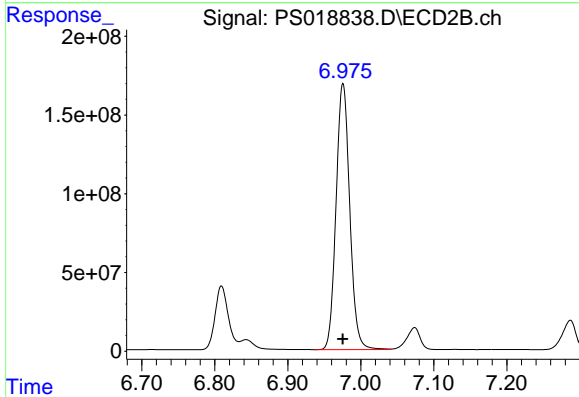
R.T.: 6.809 min
 Delta R.T.: -0.001 min
 Response: 511754156
 Conc: 749.47 ng/ml



#5 DICAMBA

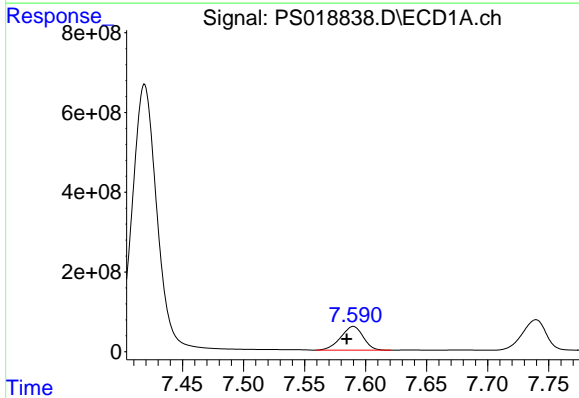
R.T.: 7.419 min
 Delta R.T.: -0.001 min
 Response: 9274151636
 Conc: 690.46 ng/ml

Instrument :
 FID_E
 ClientSampleId :



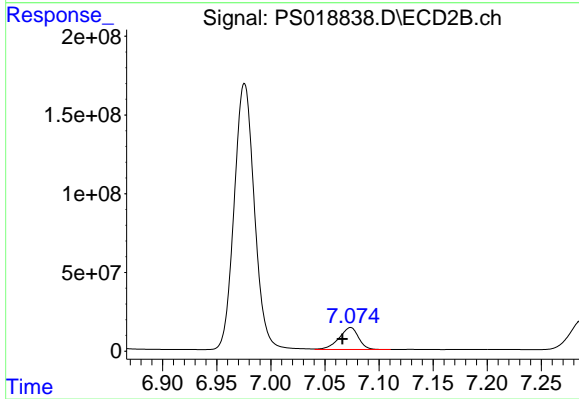
#5 DICAMBA

R.T.: 6.976 min
 Delta R.T.: 0.000 min
 Response: 2199314317
 Conc: 711.51 ng/ml



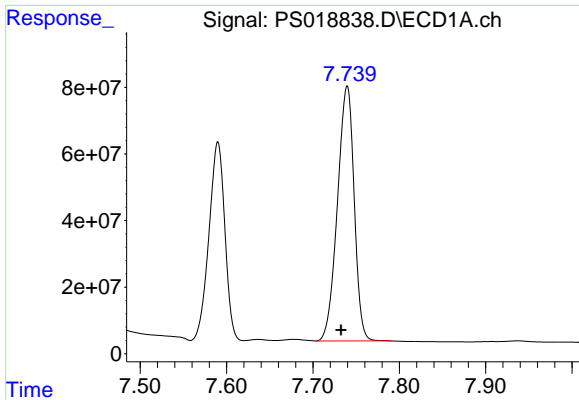
#6 MCPP

R.T.: 7.590 min
 Delta R.T.: 0.006 min
 Response: 762096104
 Conc: 70.34 ug/ml



#6 MCPP

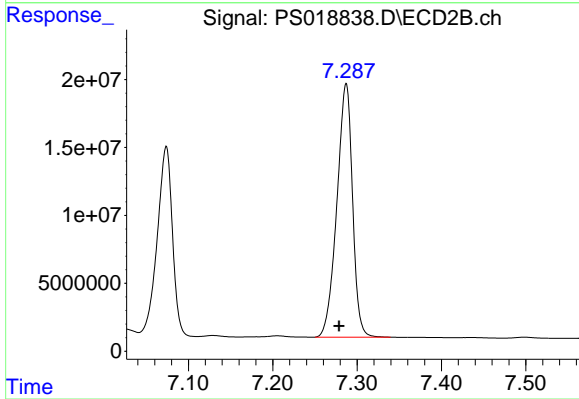
R.T.: 7.074 min
 Delta R.T.: 0.008 min
 Response: 176239890
 Conc: 70.82 ug/ml



#7 MCPA

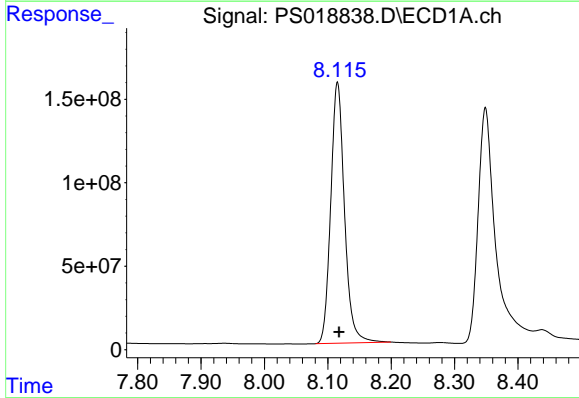
R.T.: 7.740 min
 Delta R.T.: 0.007 min
 Response: 1029786817
 Conc: 69.46 ug/ml

Instrument :
 FID_E
 ClientSampleId :



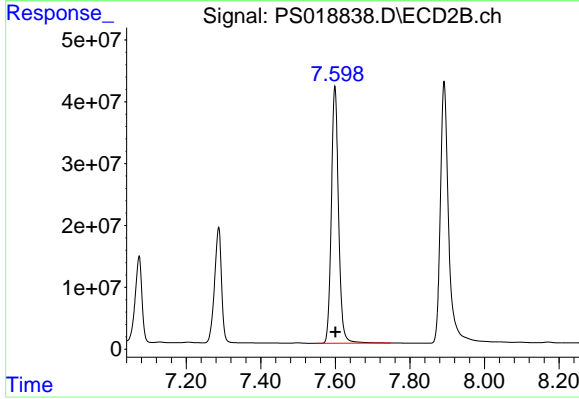
#7 MCPA

R.T.: 7.287 min
 Delta R.T.: 0.009 min
 Response: 240833099
 Conc: 70.00 ug/ml



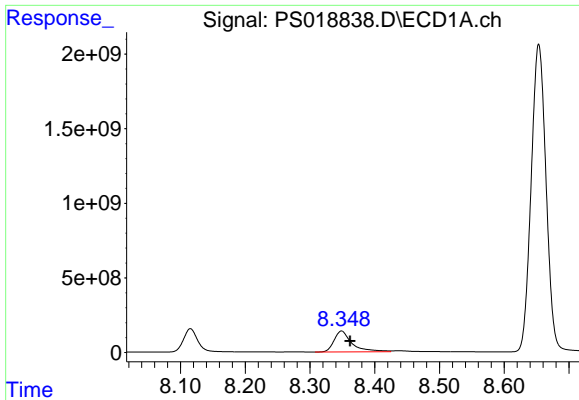
#8 DICHLORPROP

R.T.: 8.115 min
 Delta R.T.: -0.002 min
 Response: 2359810481
 Conc: 690.29 ng/ml



#8 DICHLORPROP

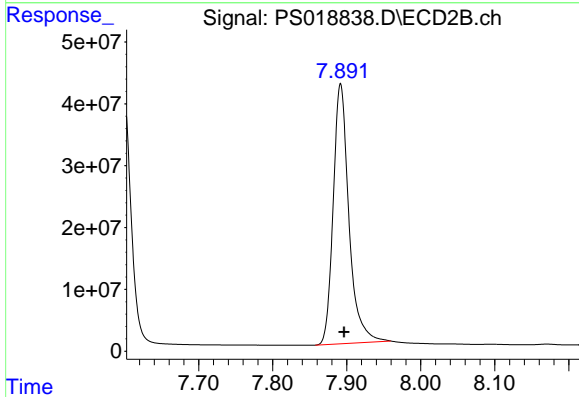
R.T.: 7.599 min
 Delta R.T.: 0.000 min
 Response: 558594171
 Conc: 702.37 ng/ml



#9 2,4-D

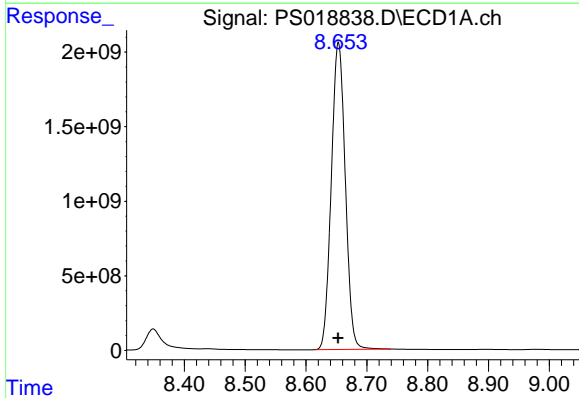
R.T.: 8.349 min
 Delta R.T.: -0.013 min
 Response: 2696783164
 Conc: 685.48 ng/ml

Instrument :
 FID_E
 ClientSampleId :



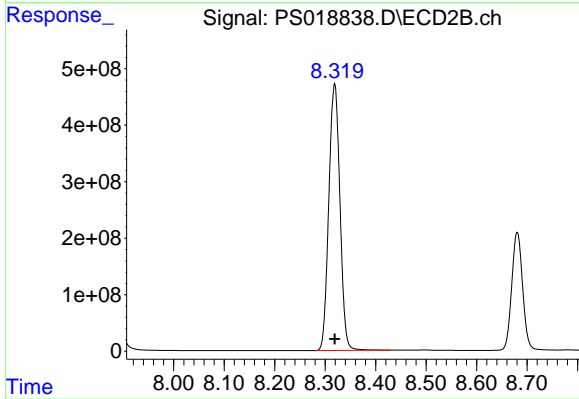
#9 2,4-D

R.T.: 7.892 min
 Delta R.T.: -0.005 min
 Response: 619461993
 Conc: 719.58 ng/ml



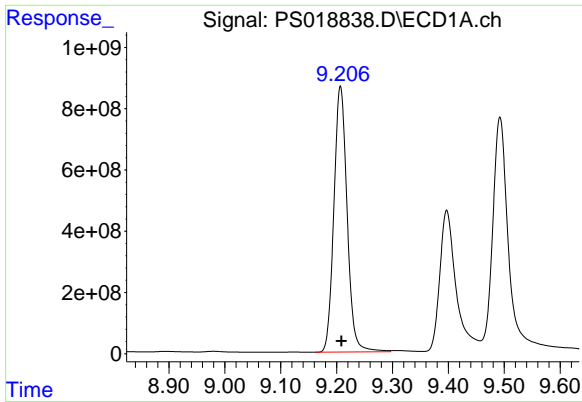
#10 Pentachlorophenol

R.T.: 8.653 min
 Delta R.T.: 0.000 min
 Response: 32861732631
 Conc: 723.56 ng/ml



#10 Pentachlorophenol

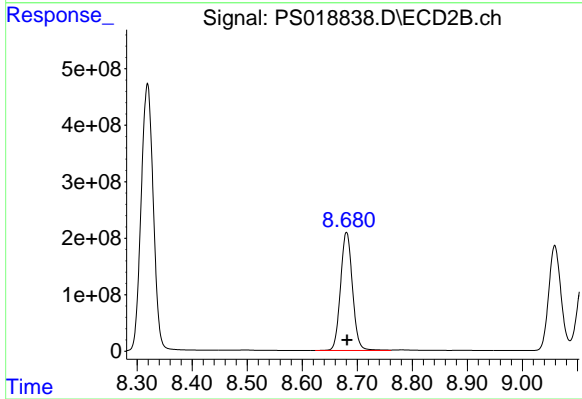
R.T.: 8.319 min
 Delta R.T.: 0.000 min
 Response: 7244876800
 Conc: 711.59 ng/ml



#11 2,4,5-TP (SILVEX)

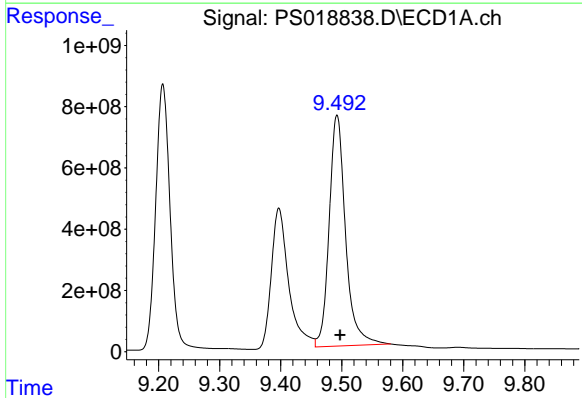
R.T.: 9.207 min
 Delta R.T.: -0.002 min
 Response: 14261960929
 Conc: 702.08 ng/ml

Instrument :
 FID_E
 ClientSampleId :



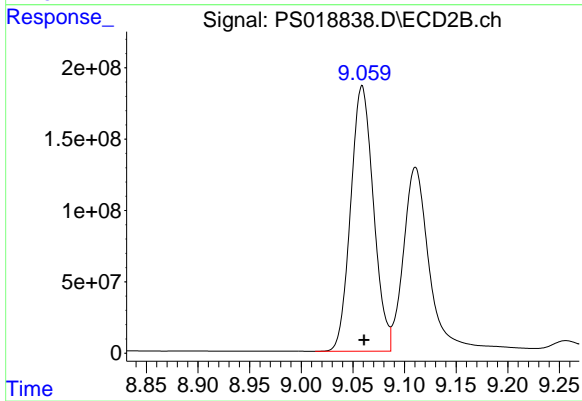
#11 2,4,5-TP (SILVEX)

R.T.: 8.681 min
 Delta R.T.: 0.000 min
 Response: 3154396062
 Conc: 718.47 ng/ml



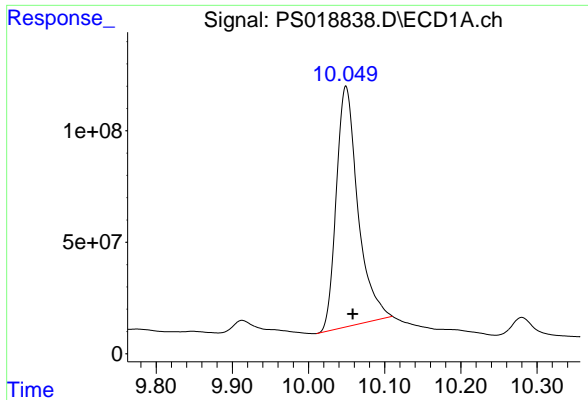
#12 2,4,5-T

R.T.: 9.492 min
 Delta R.T.: -0.005 min
 Response: 14089428401
 Conc: 716.97 ng/ml



#12 2,4,5-T

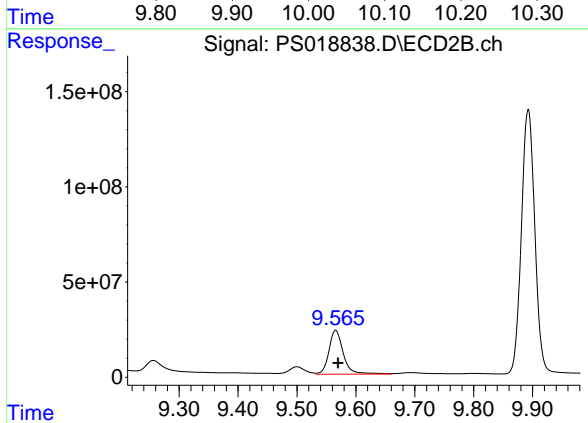
R.T.: 9.059 min
 Delta R.T.: -0.002 min
 Response: 2860006890
 Conc: 729.00 ng/ml



#13 2,4-DB

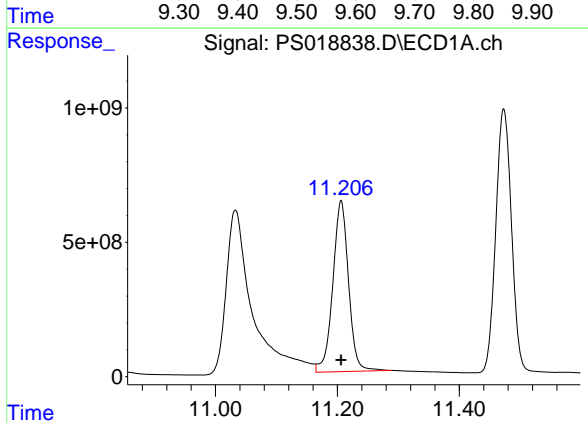
R.T.: 10.049 min
Delta R.T.: -0.009 min
Response: 2136230171
Conc: 742.15 ng/ml

Instrument :
FID_E
ClientSampleId :



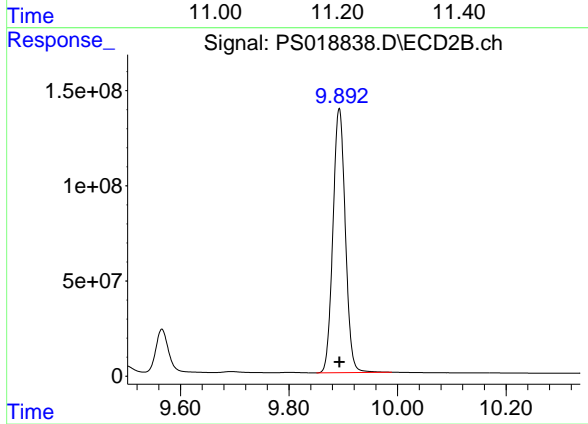
#13 2,4-DB

R.T.: 9.566 min
Delta R.T.: -0.004 min
Response: 392178229
Conc: 732.39 ng/ml



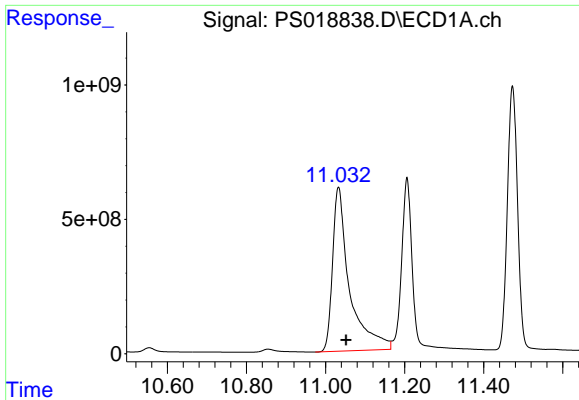
#14 DINOSEB

R.T.: 11.206 min
Delta R.T.: 0.000 min
Response: 11397219295
Conc: 689.37 ng/ml



#14 DINOSEB

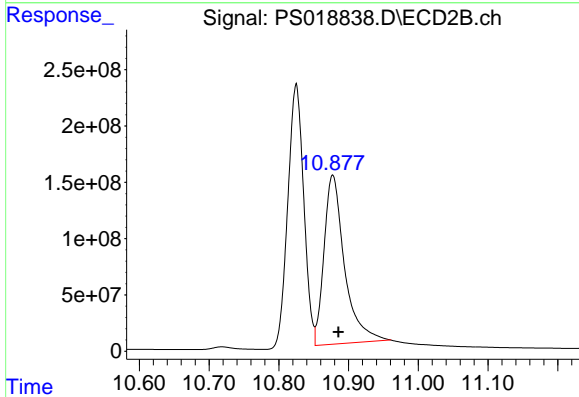
R.T.: 9.893 min
Delta R.T.: 0.000 min
Response: 2200712945
Conc: 711.48 ng/ml



#15 Picloram

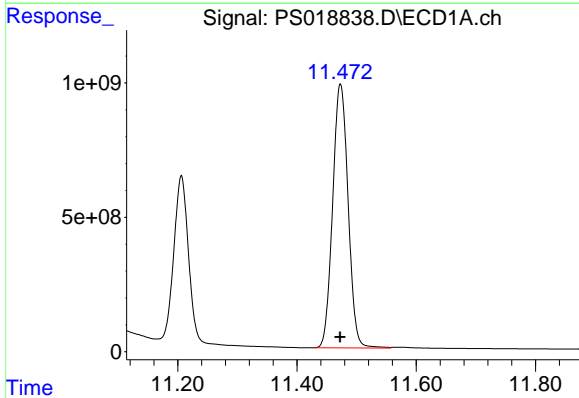
R.T.: 11.033 min
 Delta R.T.: -0.019 min
 Response: 18239181417
 Conc: 718.47 ng/ml

Instrument :
 FID_E
 ClientSampleId :



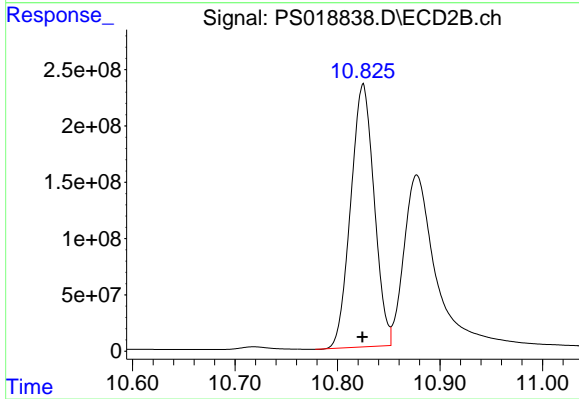
#15 Picloram

R.T.: 10.877 min
 Delta R.T.: -0.008 min
 Response: 3072105969
 Conc: 727.68 ng/ml



#16 DCPA

R.T.: 11.473 min
 Delta R.T.: 0.000 min
 Response: 17655250211
 Conc: 705.20 ng/ml



#16 DCPA

R.T.: 10.825 min
 Delta R.T.: 0.000 min
 Response: 3705476296
 Conc: 725.47 ng/ml