

Data Path : Z:\pestpcbsrv\HPCHEM1\ECD_S\Data\PS033022\
 Data File : PS018842.D
 Signal(s) : Signal #1: ECD1A.ch Signal #2: ECD2B.ch
 Acq On : 30 Mar 2022 20:19
 Operator : AJ\MA
 Sample : HSTDCCC750
 Misc :
 ALS Vial : 5 Sample Multiplier: 1

Instrument :
 FID_E
 ClientSampleId :

Integration File signal 1: autoint1.e
 Integration File signal 2: autoint2.e
 Quant Time: Mar 31 03:03:50 2022
 Quant Method : Z:\pestpcbsrv\HPCHEM1\ECD_S\Method\PS033022.M
 Quant Title : 8080.M
 QLast Update : Thu Mar 31 02:39:40 2022
 Response via : Initial Calibration
 Integrator: ChemStation

Volume Inj. : 2 µl
 Signal #1 Phase : Rtx-CLPesticides Signal #2 Phase: Rtx-CLPesticides2
 Signal #1 Info : 30M x 0.32mm x0.5 Signal #2 Info : 30M x 0.32mm x 0.25µm

	Compound	RT#1	RT#2	Resp#1	Resp#2	ng/ml	ng/ml

System Monitoring Compounds							
4) S	2,4-DCAA	7.227	6.808	2328.6E6	534.7E6	787.723	783.037
Target Compounds							
1) T	Dalapon	3.029	2.532	3108.7E6	618.5E6	678.926	686.777
2) T	3,5-DICHL...	6.436	5.981	2956.5E6	765.3E6	699.724	719.481
3) T	4-Nitroph...	0.000	6.422	0	281.1E6	N.D.	686.138
5) T	DICAMBA	7.419	6.975	9141.2E6	2227.3E6	680.556	720.580
6) T	MCPD	7.590	7.073	756.0E6	178.0E6	69.773	71.509
7) T	MCPA	7.740	7.287	1032.0E6	246.0E6	69.609	71.500
8) T	DICHLORPROP	8.114	7.598	2369.2E6	569.9E6	693.030	716.588
9) T	2,4-D	8.344	7.891	2821.7E6	655.3E6	717.226	761.167
10) T	Pentachlo...	8.653	8.319	32560.1E6	7343.8E6	716.917	721.303
11) T	2,4,5-TP ...	9.206	8.681	14300.8E6	3229.3E6	703.987	735.538
12) T	2,4,5-T	9.490	9.058	14358.0E6	2977.3E6	730.632	758.898
13) T	2,4-DB	10.044	9.565	2531.0E6	407.1E6	879.302	760.223
14) T	DINOSEB	11.205	9.893	11099.6E6	2255.7E6	671.366	729.237
15) T	Picloram	11.027	10.875	19691.4E6	3484.3E6	775.675	825.320
16) T	DCPA	11.473	10.825	17874.7E6	3831.5E6	713.961	750.150

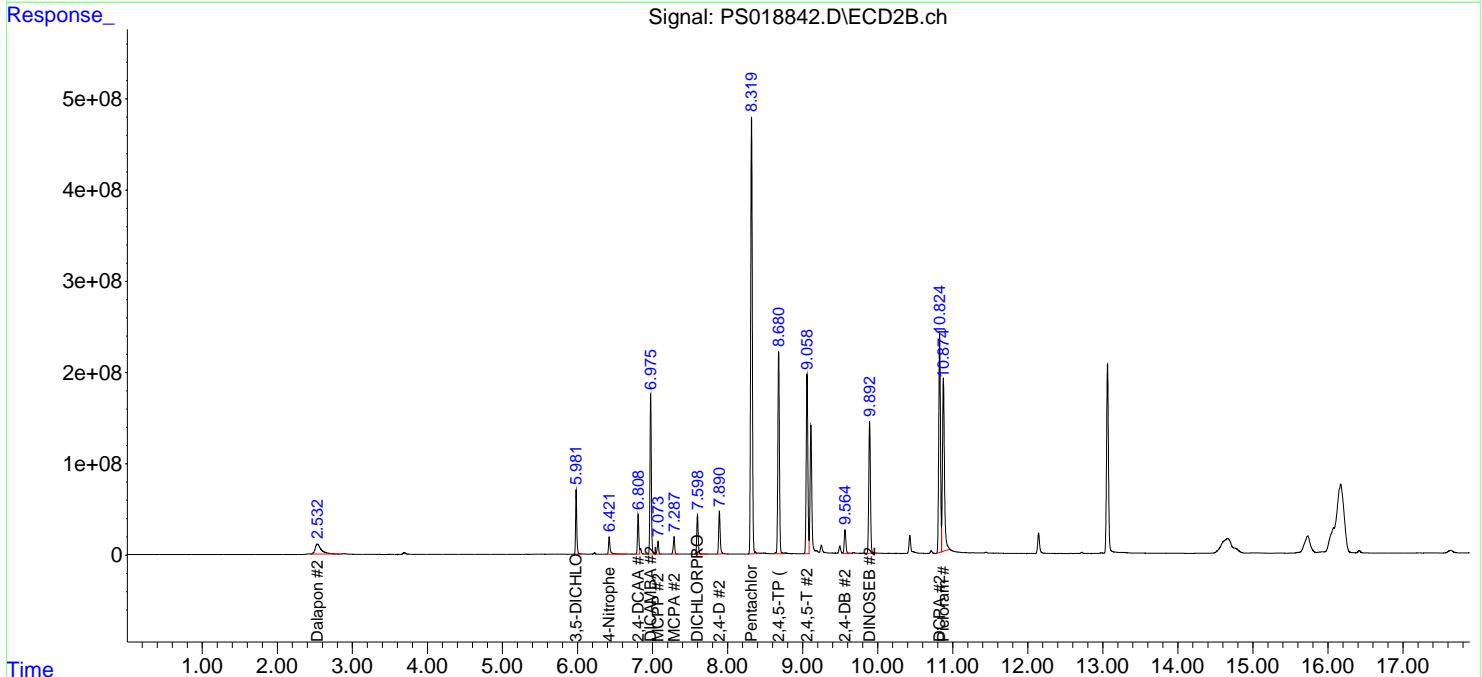
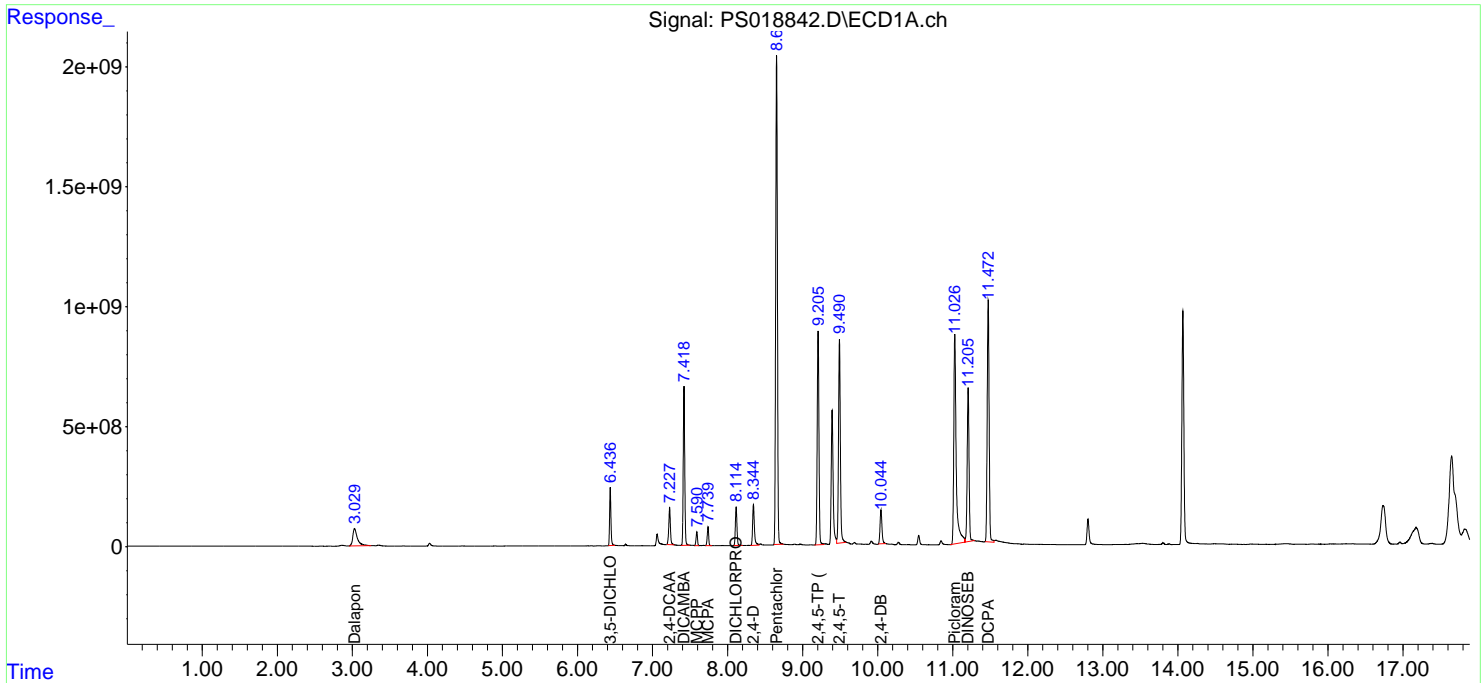
(f)=RT Delta > 1/2 Window (#)=Amounts differ by > 25% (m)=manual int.

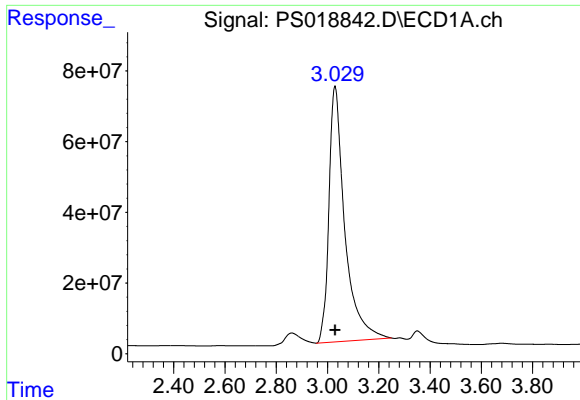
Data Path : Z:\pestpcbsrv\HPCHEM1\ECD_S\Data\PS033022\
 Data File : PS018842.D
 Signal(s) : Signal #1: ECD1A.ch Signal #2: ECD2B.ch
 Acq On : 30 Mar 2022 20:19
 Operator : AJ\MA
 Sample : HSTDCCC750
 Misc :
 ALS Vial : 5 Sample Multiplier: 1

Instrument :
 FID_E
 ClientSampleId :

Integration File signal 1: autoint1.e
 Integration File signal 2: autoint2.e
 Quant Time: Mar 31 03:03:50 2022
 Quant Method : Z:\pestpcbsrv\HPCHEM1\ECD_S\Method\PS033022.M
 Quant Title : 8080.M
 QLast Update : Thu Mar 31 02:39:40 2022
 Response via : Initial Calibration
 Integrator: ChemStation

Volume Inj. : 2 µl
 Signal #1 Phase : Rtx-CLPesticides Signal #2 Phase: Rtx-CLPesticides2
 Signal #1 Info : 30M x 0.32mm x0.5 Signal #2 Info : 30M x 0.32mm x 0.25µm

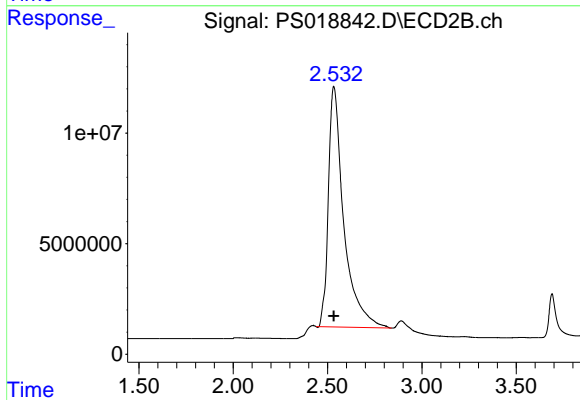




#1 Dalapon

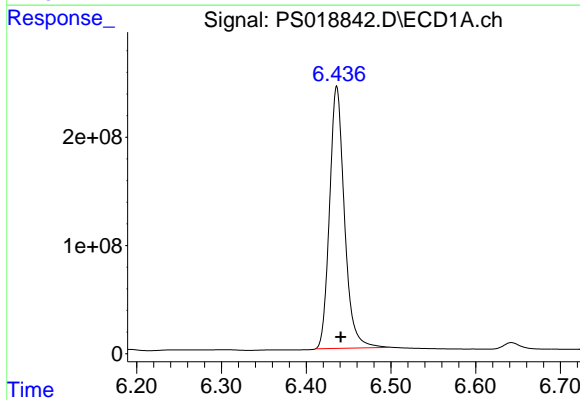
R.T.: 3.029 min
 Delta R.T.: 0.000 min
 Response: 3108727066
 Conc: 678.93 ng/ml

Instrument :
 FID_E
 ClientSampleId :



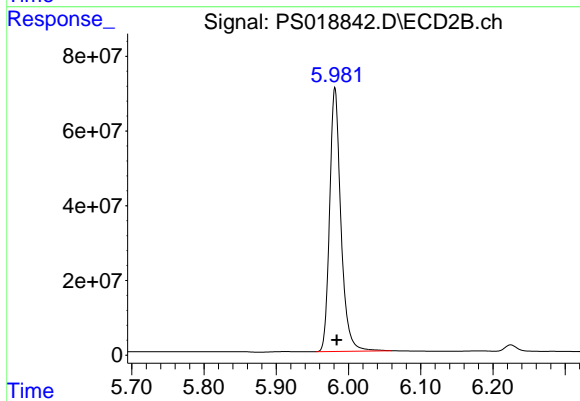
#1 Dalapon

R.T.: 2.532 min
 Delta R.T.: -0.001 min
 Response: 618520840
 Conc: 686.78 ng/ml



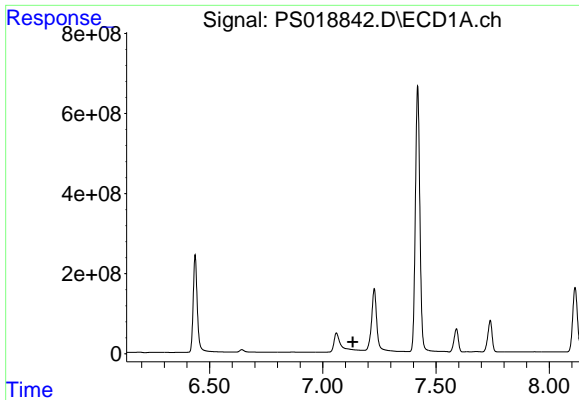
#2 3,5-DICHLOROBENZOIC ACID

R.T.: 6.436 min
 Delta R.T.: -0.005 min
 Response: 2956546540
 Conc: 699.72 ng/ml



#2 3,5-DICHLOROBENZOIC ACID

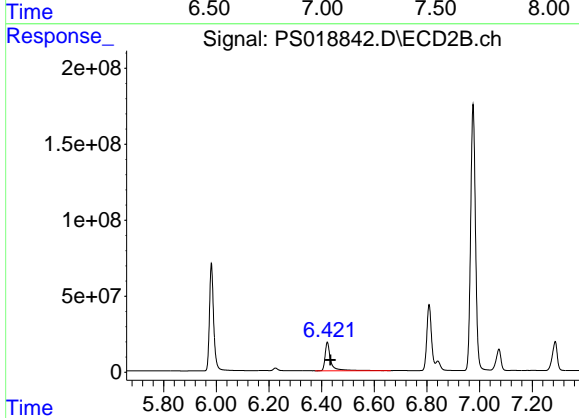
R.T.: 5.981 min
 Delta R.T.: -0.002 min
 Response: 765298491
 Conc: 719.48 ng/ml



#3 4-Nitrophenol

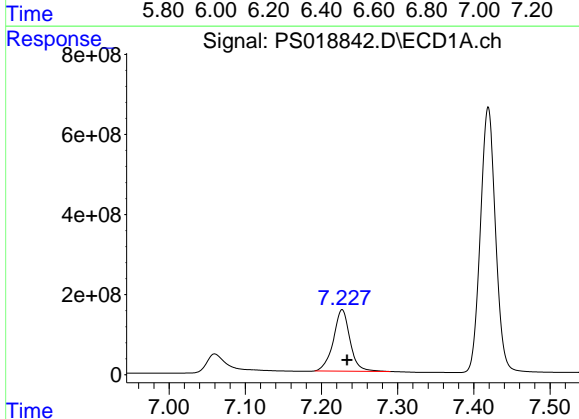
R.T.: 0.000 min
 Exp R.T.: 7.133 min
 Response: 0
 Conc: N.D.

Instrument :
 FID_E
 ClientSampleId :



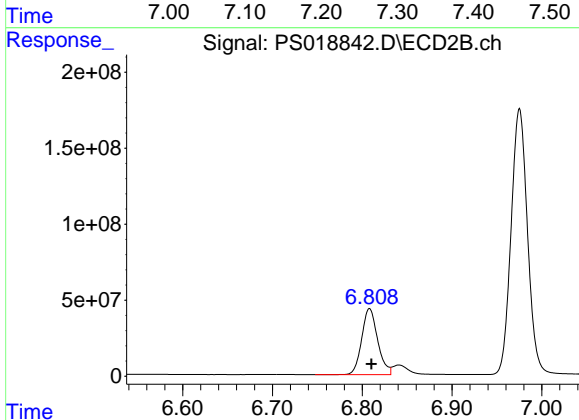
#3 4-Nitrophenol

R.T.: 6.422 min
 Delta R.T.: -0.011 min
 Response: 281065295
 Conc: 686.14 ng/ml



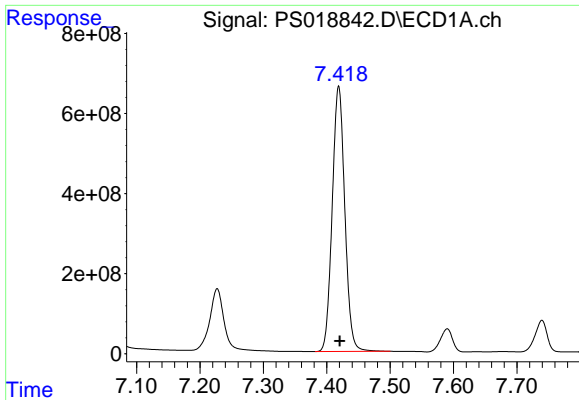
#4 2,4-DCAA

R.T.: 7.227 min
 Delta R.T.: -0.006 min
 Response: 2328581279
 Conc: 787.72 ng/ml



#4 2,4-DCAA

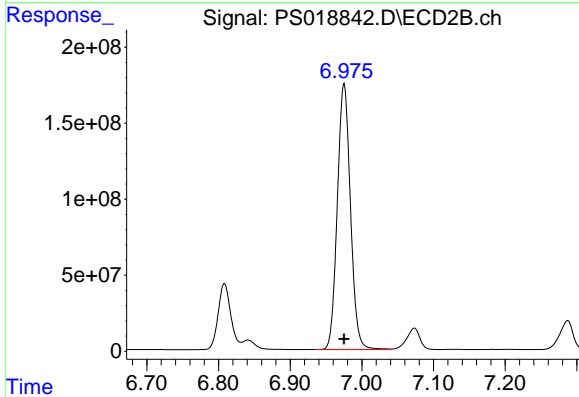
R.T.: 6.808 min
 Delta R.T.: -0.002 min
 Response: 534675677
 Conc: 783.04 ng/ml



#5 DICAMBA

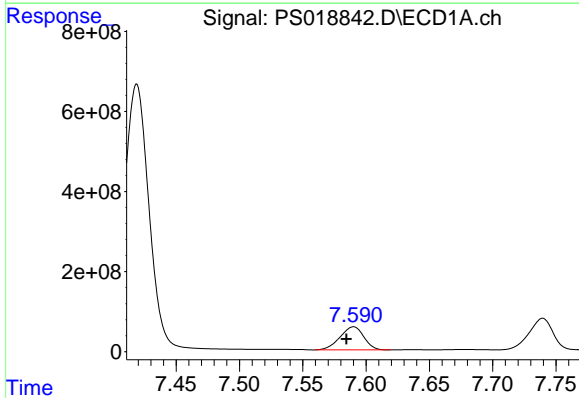
R.T.: 7.419 min
 Delta R.T.: -0.001 min
 Response: 9141154209
 Conc: 680.56 ng/ml

Instrument :
 FID_E
 ClientSampleId :



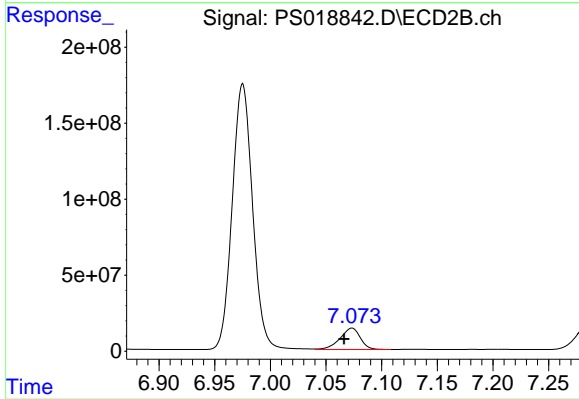
#5 DICAMBA

R.T.: 6.975 min
 Delta R.T.: 0.000 min
 Response: 2227337283
 Conc: 720.58 ng/ml



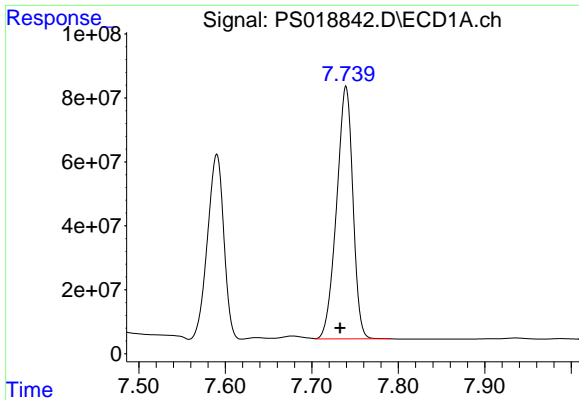
#6 MCPP

R.T.: 7.590 min
 Delta R.T.: 0.006 min
 Response: 755972366
 Conc: 69.77 ug/ml



#6 MCPP

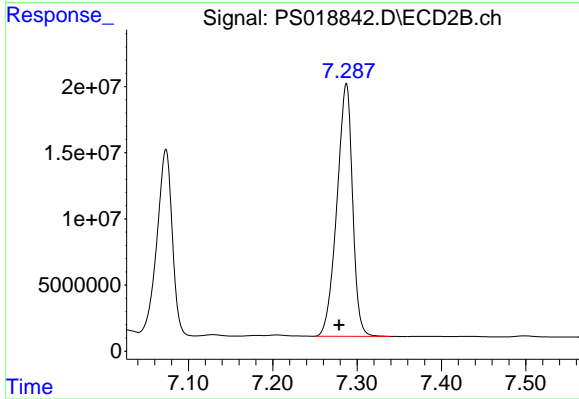
R.T.: 7.073 min
 Delta R.T.: 0.007 min
 Response: 177955217
 Conc: 71.51 ug/ml



#7 MCPA

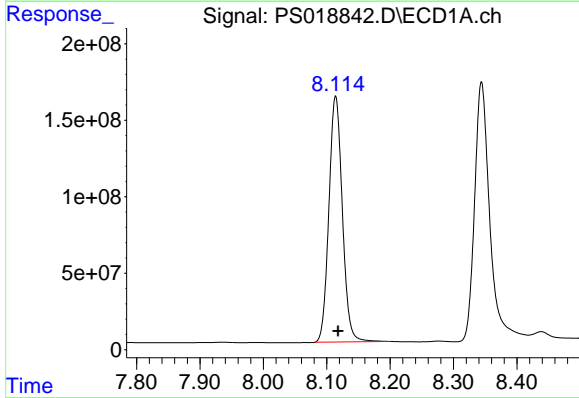
R.T.: 7.740 min
 Delta R.T.: 0.007 min
 Response: 1032047735
 Conc: 69.61 ug/ml

Instrument :
 FID_E
 ClientSampleId :



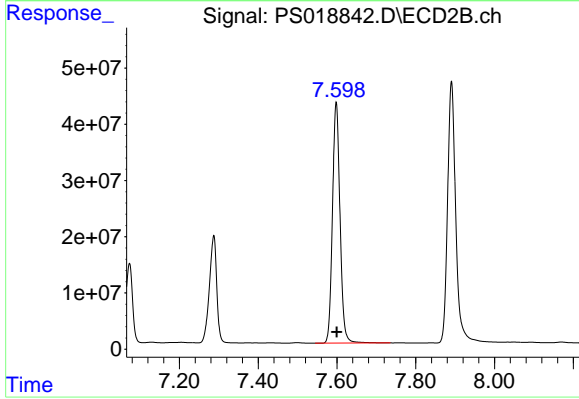
#7 MCPA

R.T.: 7.287 min
 Delta R.T.: 0.009 min
 Response: 245983433
 Conc: 71.50 ug/ml



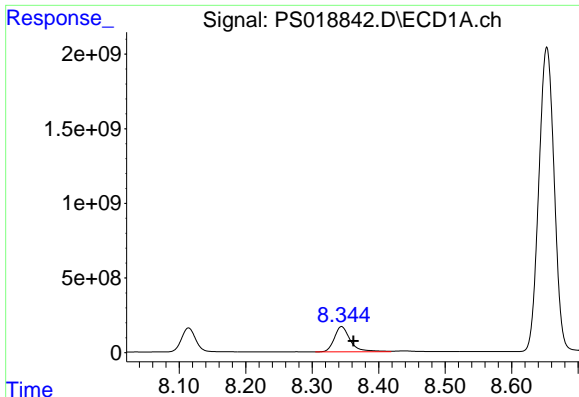
#8 DICHLORPROP

R.T.: 8.114 min
 Delta R.T.: -0.004 min
 Response: 2369169092
 Conc: 693.03 ng/ml



#8 DICHLORPROP

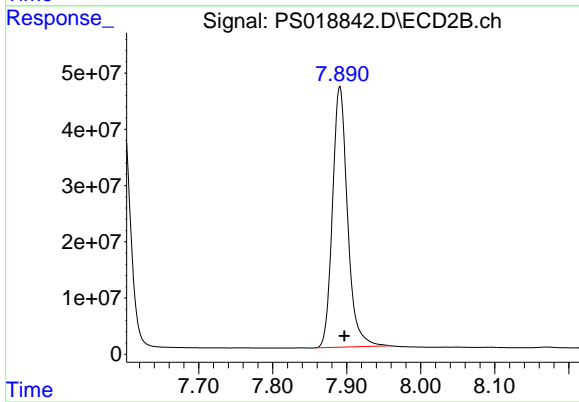
R.T.: 7.598 min
 Delta R.T.: -0.002 min
 Response: 569898616
 Conc: 716.59 ng/ml



#9 2,4-D

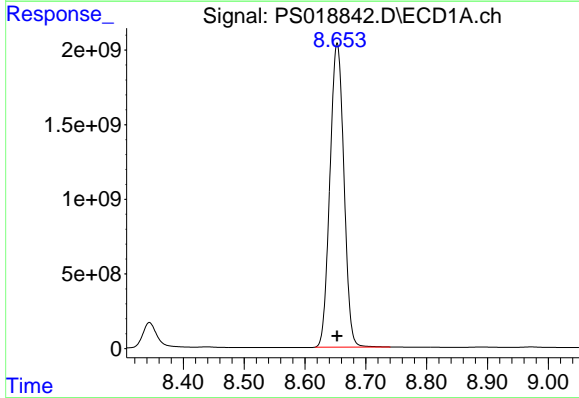
R.T.: 8.344 min
 Delta R.T.: -0.018 min
 Response: 2821673055
 Conc: 717.23 ng/ml

Instrument :
 FID_E
 ClientSampleId :



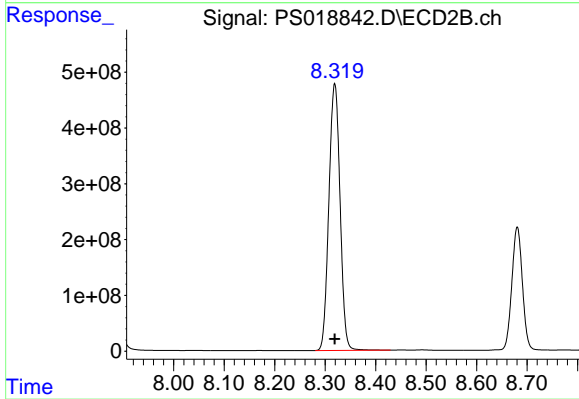
#9 2,4-D

R.T.: 7.891 min
 Delta R.T.: -0.006 min
 Response: 655263943
 Conc: 761.17 ng/ml



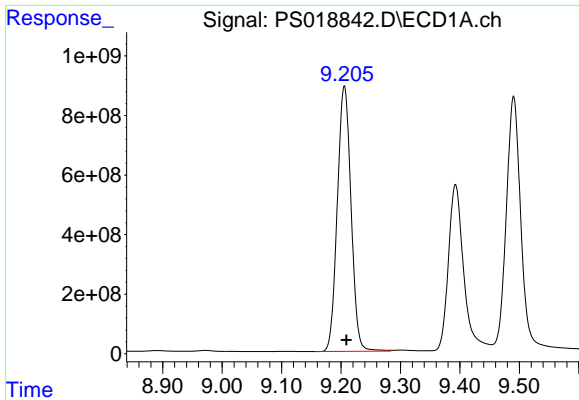
#10 Pentachlorophenol

R.T.: 8.653 min
 Delta R.T.: 0.000 min
 Response: 32560063598
 Conc: 716.92 ng/ml



#10 Pentachlorophenol

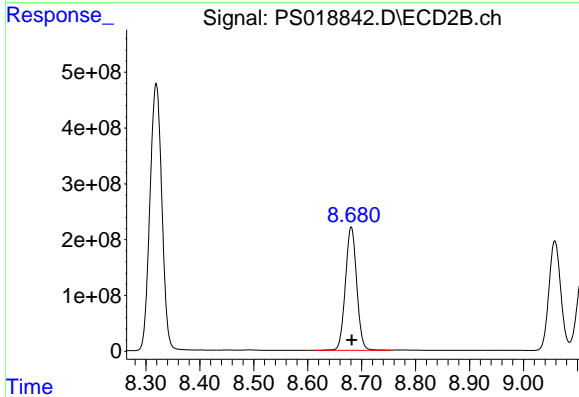
R.T.: 8.319 min
 Delta R.T.: 0.000 min
 Response: 7343813987
 Conc: 721.30 ng/ml



#11 2,4,5-TP (SILVEX)

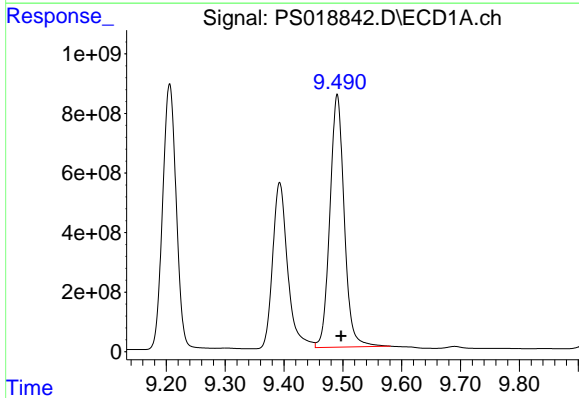
R.T.: 9.206 min
 Delta R.T.: -0.003 min
 Response: 14300778571
 Conc: 703.99 ng/ml

Instrument :
 FID_E
 ClientSampleId :



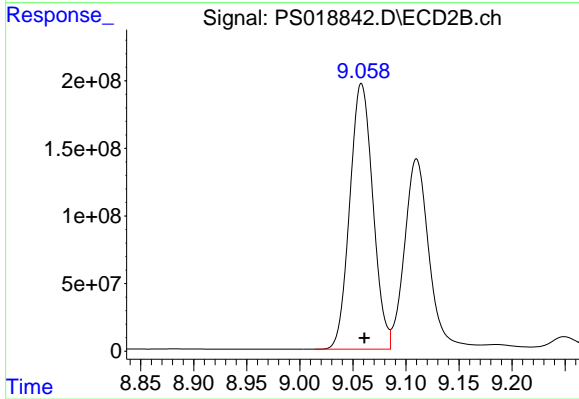
#11 2,4,5-TP (SILVEX)

R.T.: 8.681 min
 Delta R.T.: 0.000 min
 Response: 3229344614
 Conc: 735.54 ng/ml



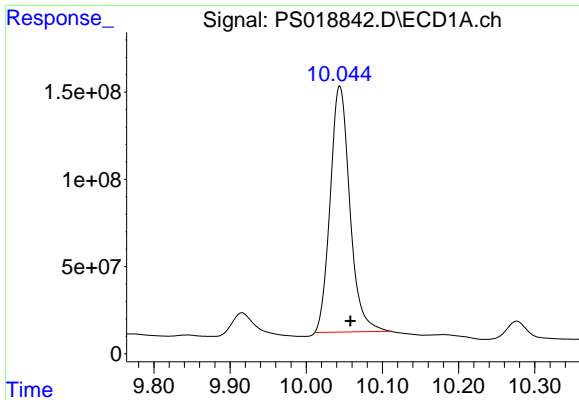
#12 2,4,5-T

R.T.: 9.490 min
 Delta R.T.: -0.007 min
 Response: 14358010004
 Conc: 730.63 ng/ml



#12 2,4,5-T

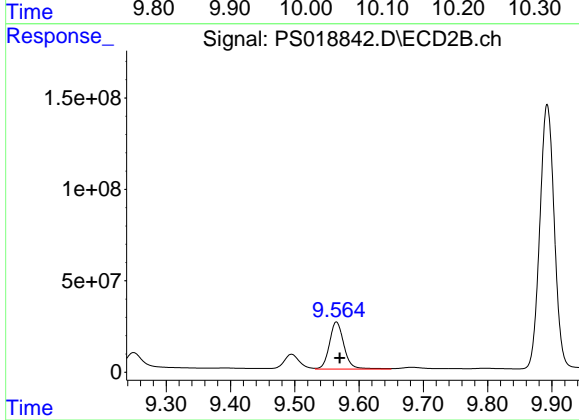
R.T.: 9.058 min
 Delta R.T.: -0.003 min
 Response: 2977293595
 Conc: 758.90 ng/ml



#13 2,4-DB

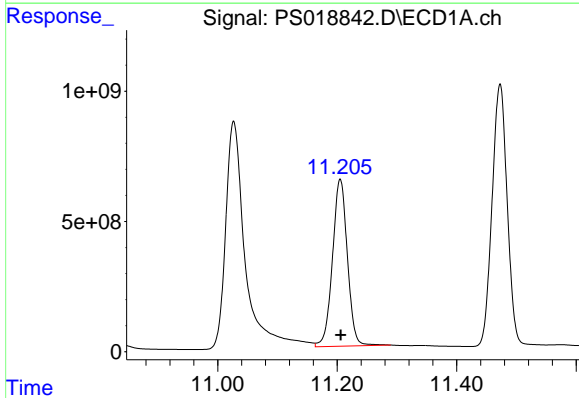
R.T.: 10.044 min
Delta R.T.: -0.014 min
Response: 2531002460
Conc: 879.30 ng/ml

Instrument :
FID_E
ClientSampleId :



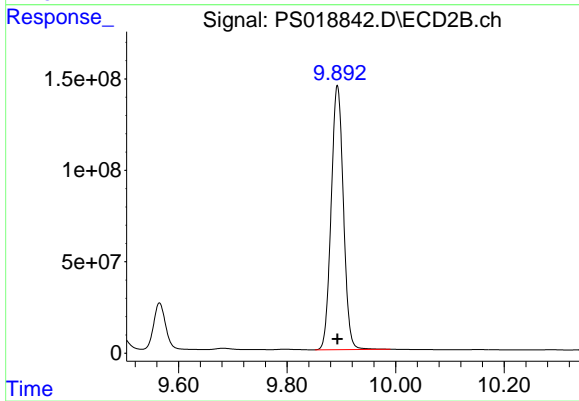
#13 2,4-DB

R.T.: 9.565 min
Delta R.T.: -0.005 min
Response: 407082245
Conc: 760.22 ng/ml



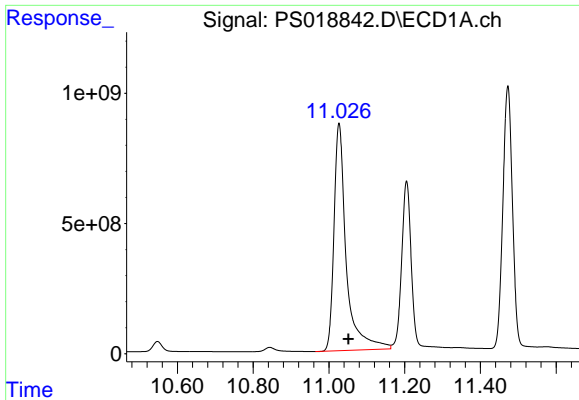
#14 DINOSEB

R.T.: 11.205 min
Delta R.T.: -0.001 min
Response: 11099636902
Conc: 671.37 ng/ml



#14 DINOSEB

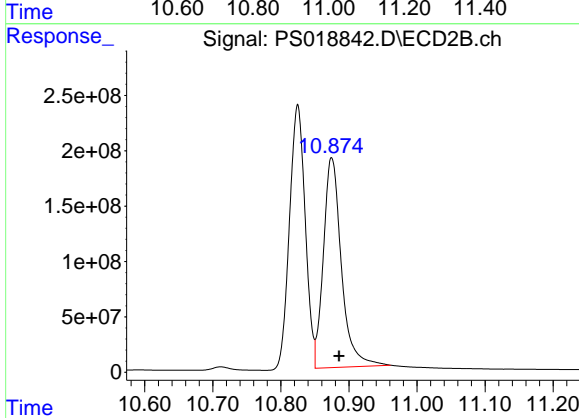
R.T.: 9.893 min
Delta R.T.: 0.000 min
Response: 2255651442
Conc: 729.24 ng/ml



#15 Picloram

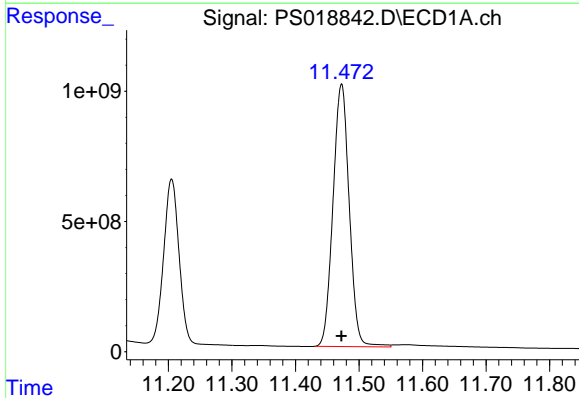
R.T.: 11.027 min
 Delta R.T.: -0.025 min
 Response: 19691442441
 Conc: 775.68 ng/ml

Instrument :
 FID_E
 ClientSampleId :



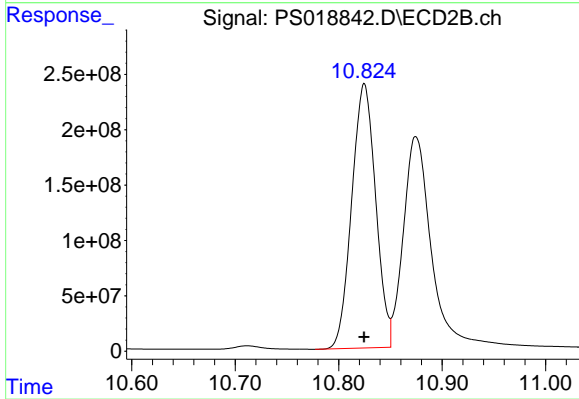
#15 Picloram

R.T.: 10.875 min
 Delta R.T.: -0.011 min
 Response: 3484346388
 Conc: 825.32 ng/ml



#16 DCPA

R.T.: 11.473 min
 Delta R.T.: 0.000 min
 Response: 17874668628
 Conc: 713.96 ng/ml



#16 DCPA

R.T.: 10.825 min
 Delta R.T.: 0.000 min
 Response: 3831527275
 Conc: 750.15 ng/ml