

Data Path : P:\HPCHEM1\FID_E\Data\FE041118\
 Data File : FE026627.D
 Signal(s) : FID1B.CH
 Acq On : 11 Apr 2018 18:55
 Operator : UA/AJ
 Sample : PB108008BL
 Misc :
 ALS Vial : 12 Sample Multiplier: 1

Integration File: autoint1.e
 Quant Time: Apr 12 09:01:31 2018
 Quant Method : P:\HPCHEM1\FID_E\methods\FE040918.M
 Quant Title :
 QLast Update : Mon Apr 09 14:09:36 2018
 Response via : Initial Calibration
 Integrator: ChemStation 6890 Scale Mode: Large solvent peaks clipped

Volume Inj. : 1uL
 Signal Phase : Rxi-lms
 Signal Info : 20mx0.18mmx0.18um

Compound	R.T.	Response	Conc Units

System Monitoring Compounds			
9) S TETRACOSANE-d50 (SURR...	15.313	3585905	18.355 ug/ml
Target Compounds			
14) N-DOTRIACONTANE	19.225	155449	0.868 ug/ml

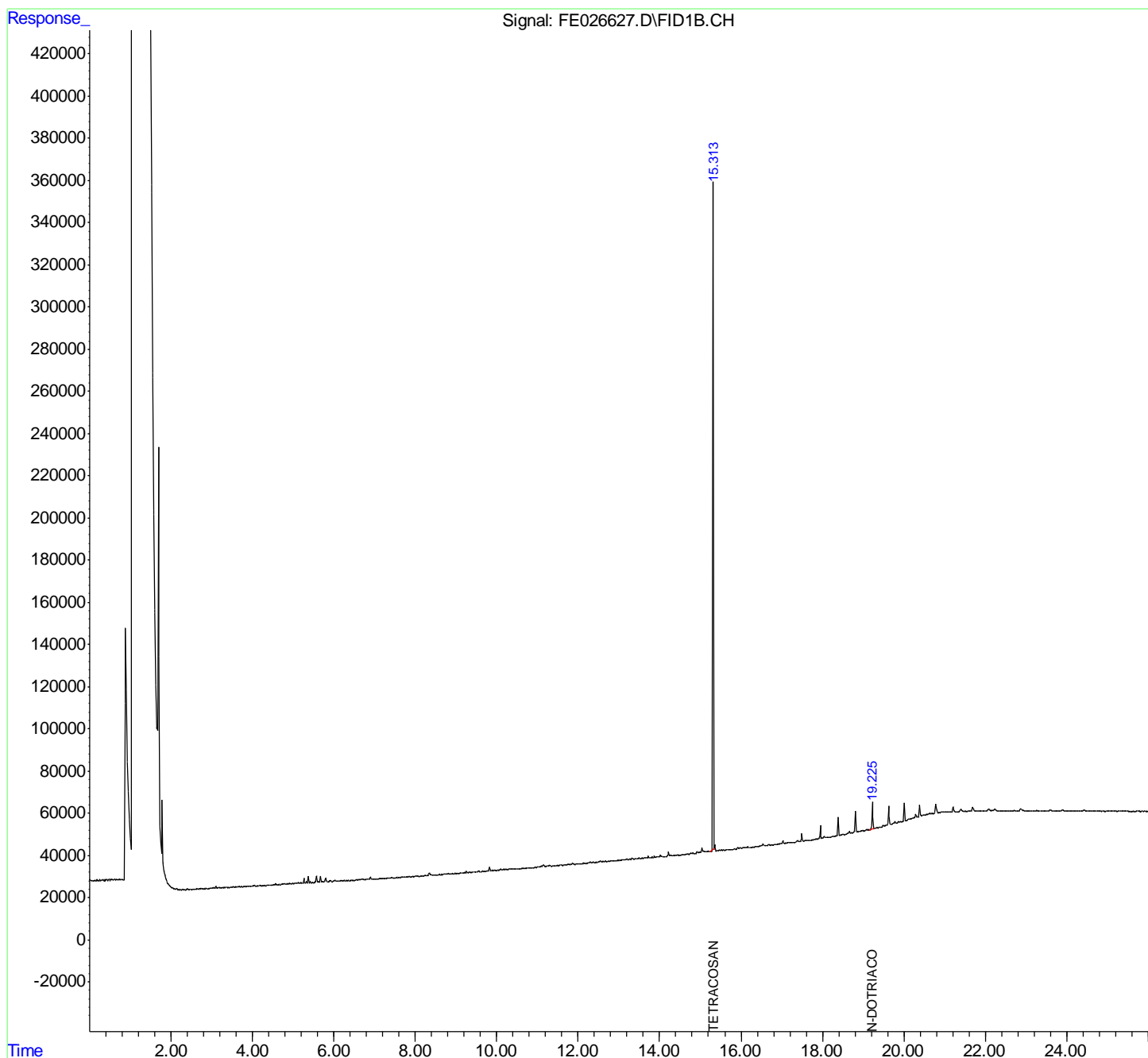
(f)=RT Delta > 1/2 Window

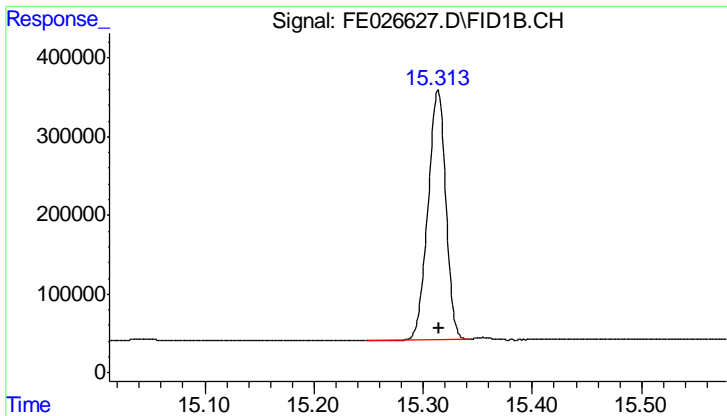
(m)=manual int.

Data Path : P:\HPCHEM1\FID_E\Data\FE041118\
 Data File : FE026627.D
 Signal(s) : FID1B.CH
 Acq On : 11 Apr 2018 18:55
 Operator : UA/AJ
 Sample : PB108008BL
 Misc :
 ALS Vial : 12 Sample Multiplier: 1

Integration File: autoint1.e
 Quant Time: Apr 12 09:01:31 2018
 Quant Method : P:\HPCHEM1\FID_E\methods\FE040918.M
 Quant Title :
 QLast Update : Mon Apr 09 14:09:36 2018
 Response via : Initial Calibration
 Integrator: ChemStation 6890 Scale Mode: Large solvent peaks clipped

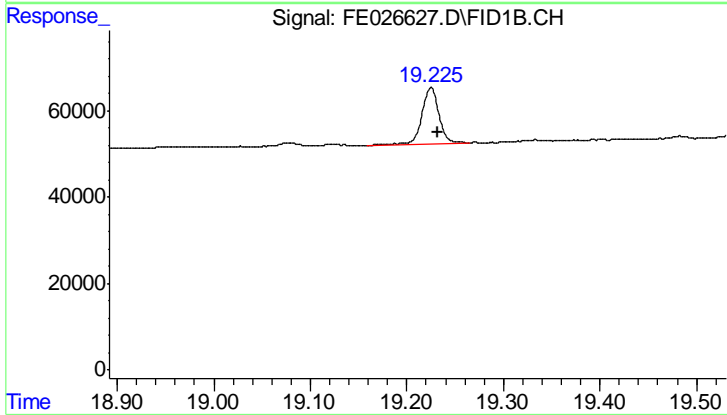
Volume Inj. : 1uL
 Signal Phase : Rxi-lms
 Signal Info : 20mx0.18mmx0.18um





#9 TETRACOSANE-d50 (SURROGATE)

R.T.: 15.313 min
Delta R.T.: 0.000 min
Response: 3585905
Conc: 18.36 ug/ml



#14 N-DOTRIACONTANE

R.T.: 19.225 min
Delta R.T.: -0.007 min
Response: 155449
Conc: 0.87 ug/ml