

Data Path : P:\HPCHEM1\FID D\Data\FD041218AL\
 Data File : FD022988.D
 Signal(s) : FID2B.CH
 Acq On : 13 Apr 2018 1:55
 Operator : UA/AJ
 Sample : J2162-05
 Misc :
 ALS Vial : 75 Sample Multiplier: 1

Integration File: autoint1.e
 Quant Time: Apr 13 04:29:59 2018
 Quant Method : P:\HPCHEM1\FID_D\methods\Alaphatic EPH 031618.M
 Quant Title : GC Extractables
 QLast Update : Mon Mar 19 11:51:27 2018
 Response via : Initial Calibration
 Integrator: ChemStation 6890 Scale Mode: Large solvent peaks clipped

Volume Inj. : 1 ul
 Signal Phase : Rxi-lms
 Signal Info : 20M x 0.18mm x 0.18um

Compound	R.T.	Response	Conc Units

System Monitoring Compounds			
9) S ortho-Terphenyl (SURR)	11.183	2590828	25.237 ug/ml
Spiked Amount	50.000	Recovery	= 50.47%
12) S 1-chlorooctadecane (S...	12.625	2202230	27.860 ug/ml
Spiked Amount	50.000	Recovery	= 55.72%
Target Compounds			
10) T n-Eicosane (C20)	12.242	477641	4.965 ug/ml
14) T n-Tetracosane (C24)	14.462	305976	3.144 ug/ml
16) T n-Octacosane (C28)	16.509	243450	2.447 ug/ml
18) T n-Dotriacontane (C32)	18.139	310541	3.307 ug/ml
19) T n-Tetratriacontane (C34)	18.922	447527	4.974 ug/ml
21) T n-Octatriacontane (C38)	20.373	14131927	170.574 ug/ml
22) T n-Tetracontane (C40)	21.117	502205	6.448 ug/ml

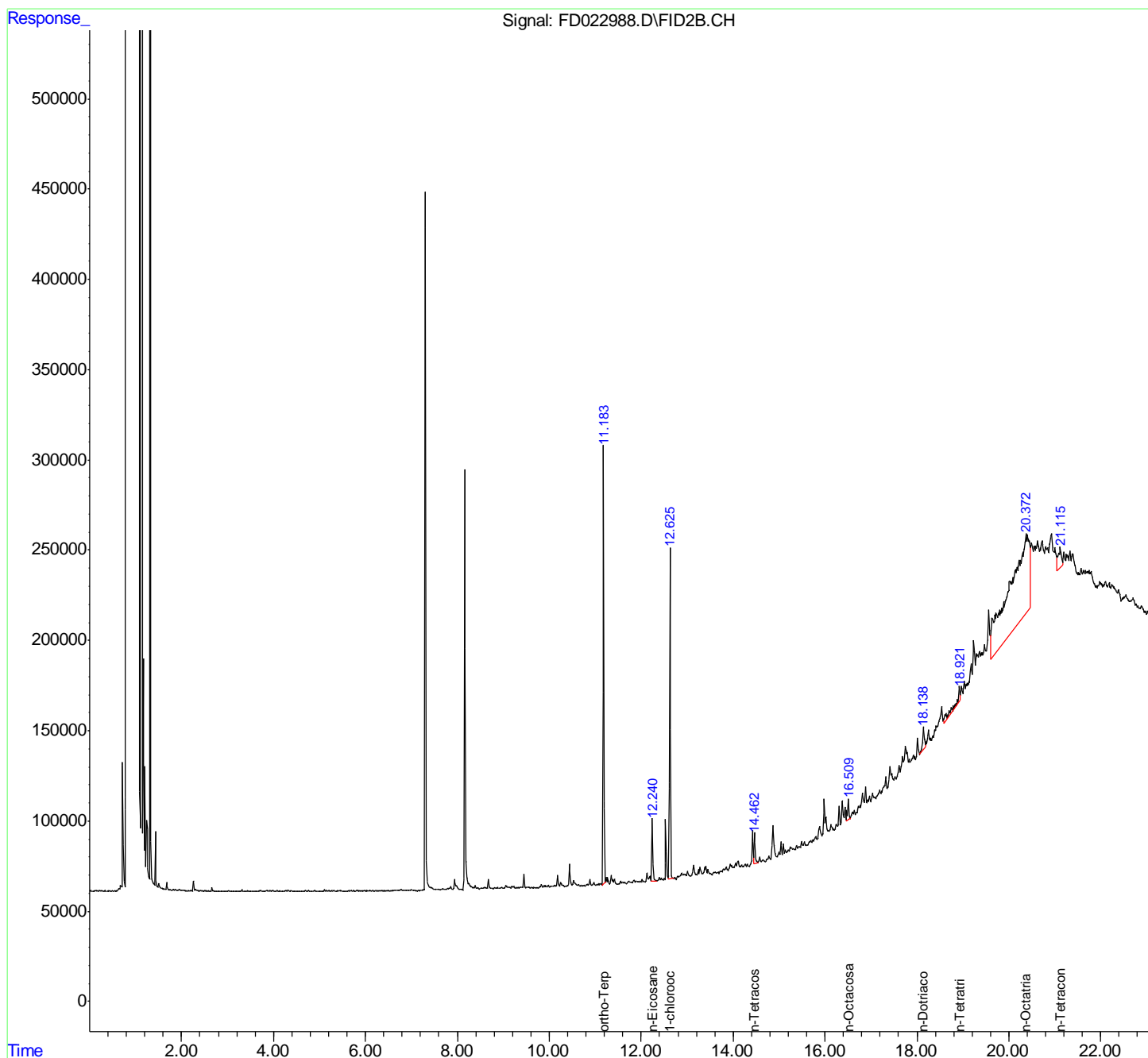
(f)=RT Delta > 1/2 Window

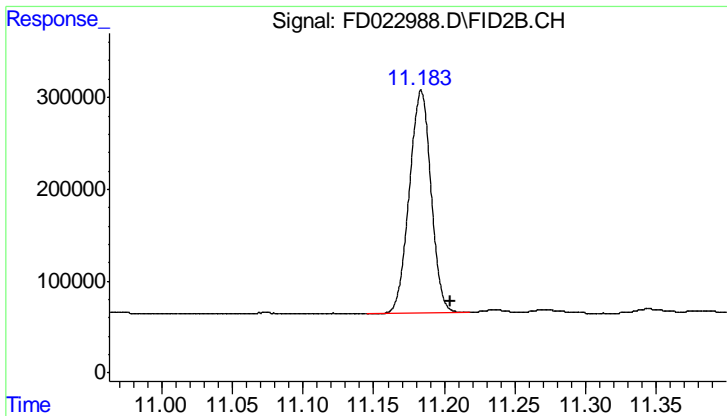
(m)=manual int.

Data Path : P:\HPCHEM1\FID D\Data\FD041218AL\
 Data File : FD022988.D
 Signal(s) : FID2B.CH
 Acq On : 13 Apr 2018 1:55
 Operator : UA/AJ
 Sample : J2162-05
 Misc :
 ALS Vial : 75 Sample Multiplier: 1

Integration File: autoint1.e
 Quant Time: Apr 13 04:29:59 2018
 Quant Method : P:\HPCHEM1\FID_D\methods\Alaphatic EPH 031618.M
 Quant Title : GC Extractables
 QLast Update : Mon Mar 19 11:51:27 2018
 Response via : Initial Calibration
 Integrator: ChemStation 6890 Scale Mode: Large solvent peaks clipped

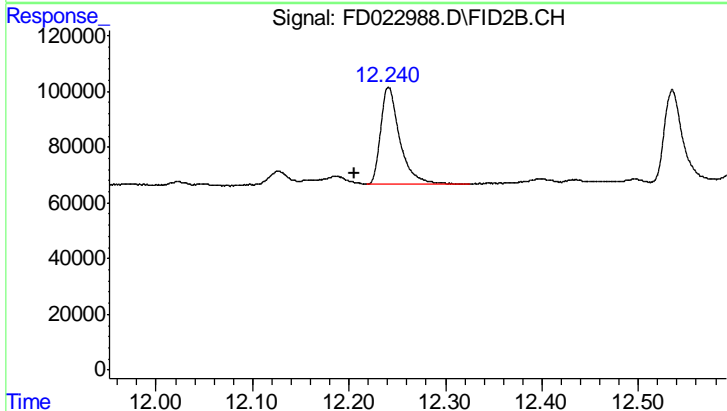
Volume Inj. : 1 ul
 Signal Phase : Rxi-lms
 Signal Info : 20M x 0.18mm x 0.18um





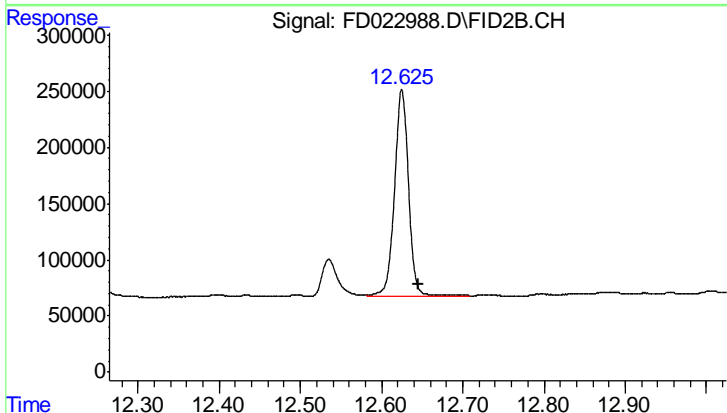
#9 ortho-Terphenyl (SURR)

R.T.: 11.183 min
Delta R.T.: -0.021 min
Response: 2590828
Conc: 25.24 ug/ml



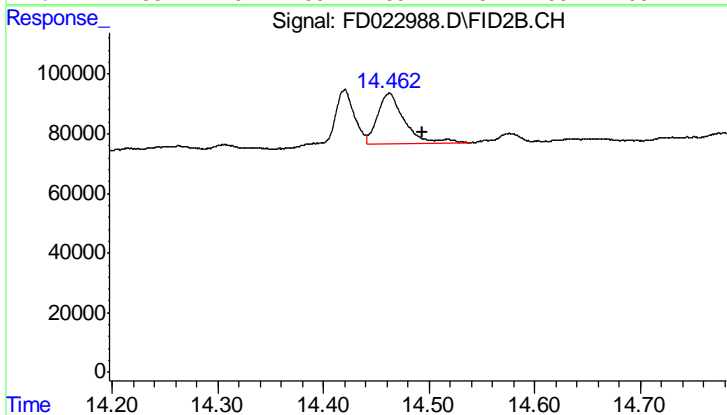
#10 n-Eicosane (C20)

R.T.: 12.242 min
Delta R.T.: 0.036 min
Response: 477641
Conc: 4.97 ug/ml



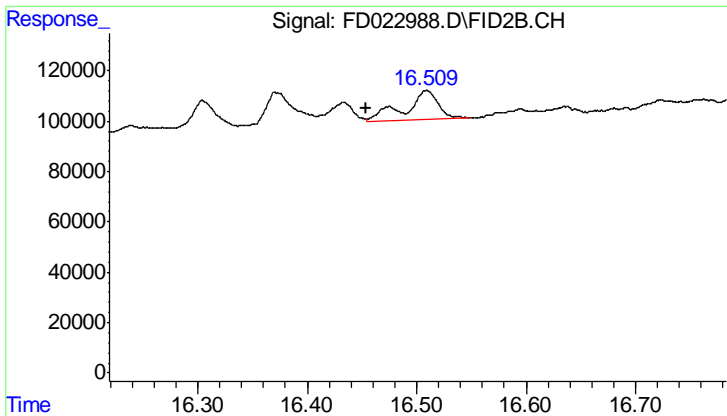
#12 1-chlorooctadecane (SURR)

R.T.: 12.625 min
Delta R.T.: -0.020 min
Response: 2202230
Conc: 27.86 ug/ml

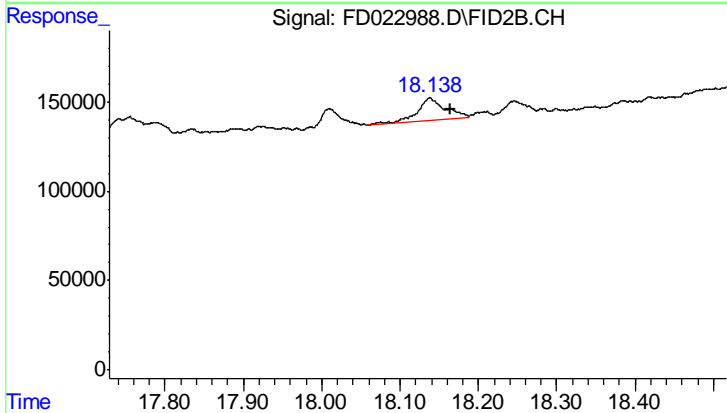


#14 n-Tetracosane (C24)

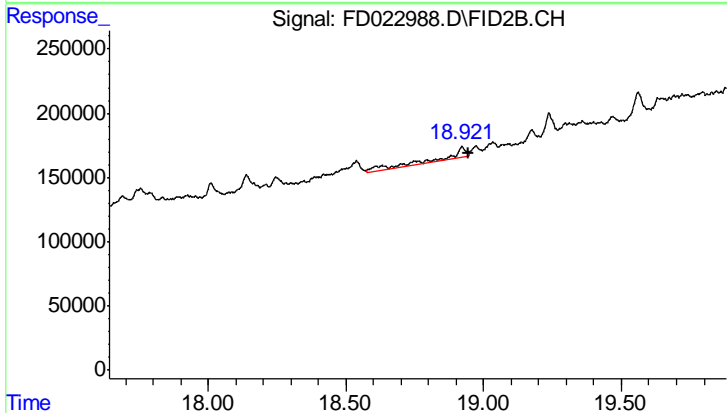
R.T.: 14.462 min
Delta R.T.: -0.031 min
Response: 305976
Conc: 3.14 ug/ml



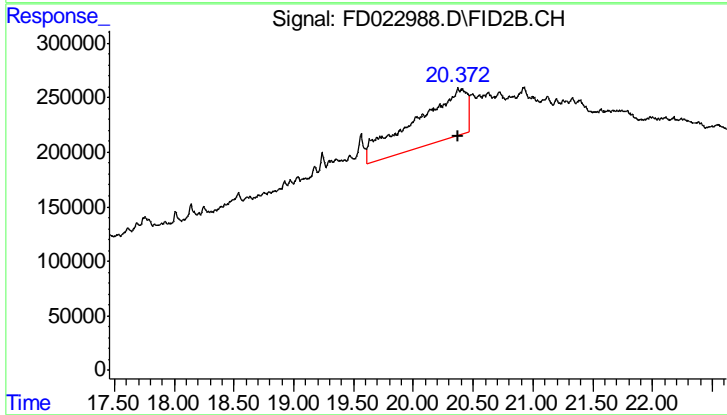
#16 n-Octacosane (C28)
 R.T.: 16.509 min
 Delta R.T.: 0.055 min
 Response: 243450
 Conc: 2.45 ug/ml



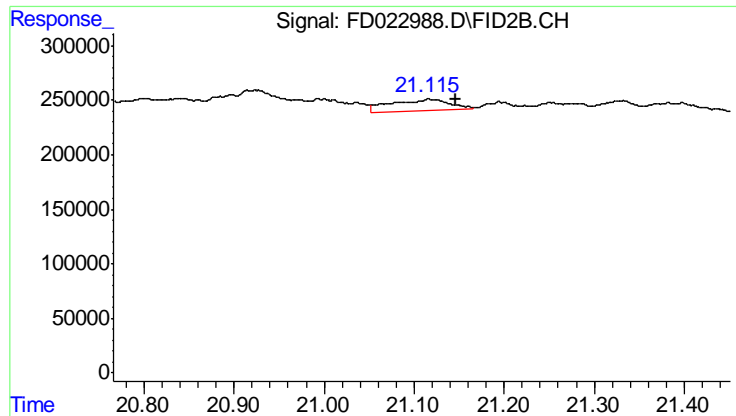
#18 n-Dotriacontane (C32)
 R.T.: 18.139 min
 Delta R.T.: -0.026 min
 Response: 310541
 Conc: 3.31 ug/ml



#19 n-Tetratriacontane (C34)
 R.T.: 18.922 min
 Delta R.T.: -0.023 min
 Response: 447527
 Conc: 4.97 ug/ml



#21 n-Octatriacontane (C38)
 R.T.: 20.373 min
 Delta R.T.: -0.002 min
 Response: 14131927
 Conc: 170.57 ug/ml



#22 n-Tetracontane (C40)

R.T.: 21.117 min
Delta R.T.: -0.029 min
Response: 502205
Conc: 6.45 ug/ml