

Data Path : P:\HPCHEM1\FID\_E\Data\FE050218\  
 Data File : FE026818.D  
 Signal(s) : FID1B.CH  
 Acq On : 02 May 2018 14:18  
 Operator : UA/AJ  
 Sample : J2157-13 20X  
 Misc :  
 ALS Vial : 11 Sample Multiplier: 1

Integration File: autoint1.e  
 Quant Time: May 03 07:52:26 2018  
 Quant Method : P:\HPCHEM1\FID\_E\methods\FE040918.M  
 Quant Title :  
 QLast Update : Mon Apr 09 14:09:36 2018  
 Response via : Initial Calibration  
 Integrator: ChemStation 6890 Scale Mode: Large solvent peaks clipped

Volume Inj. : 1uL  
 Signal Phase : Rxi-1ms  
 Signal Info : 20mx0.18mmx0.18um

| Compound                    | R.T. | Response | Conc Units |
|-----------------------------|------|----------|------------|
| -----                       |      |          |            |
| System Monitoring Compounds |      |          |            |
| Target Compounds            |      |          |            |
| -----                       |      |          |            |

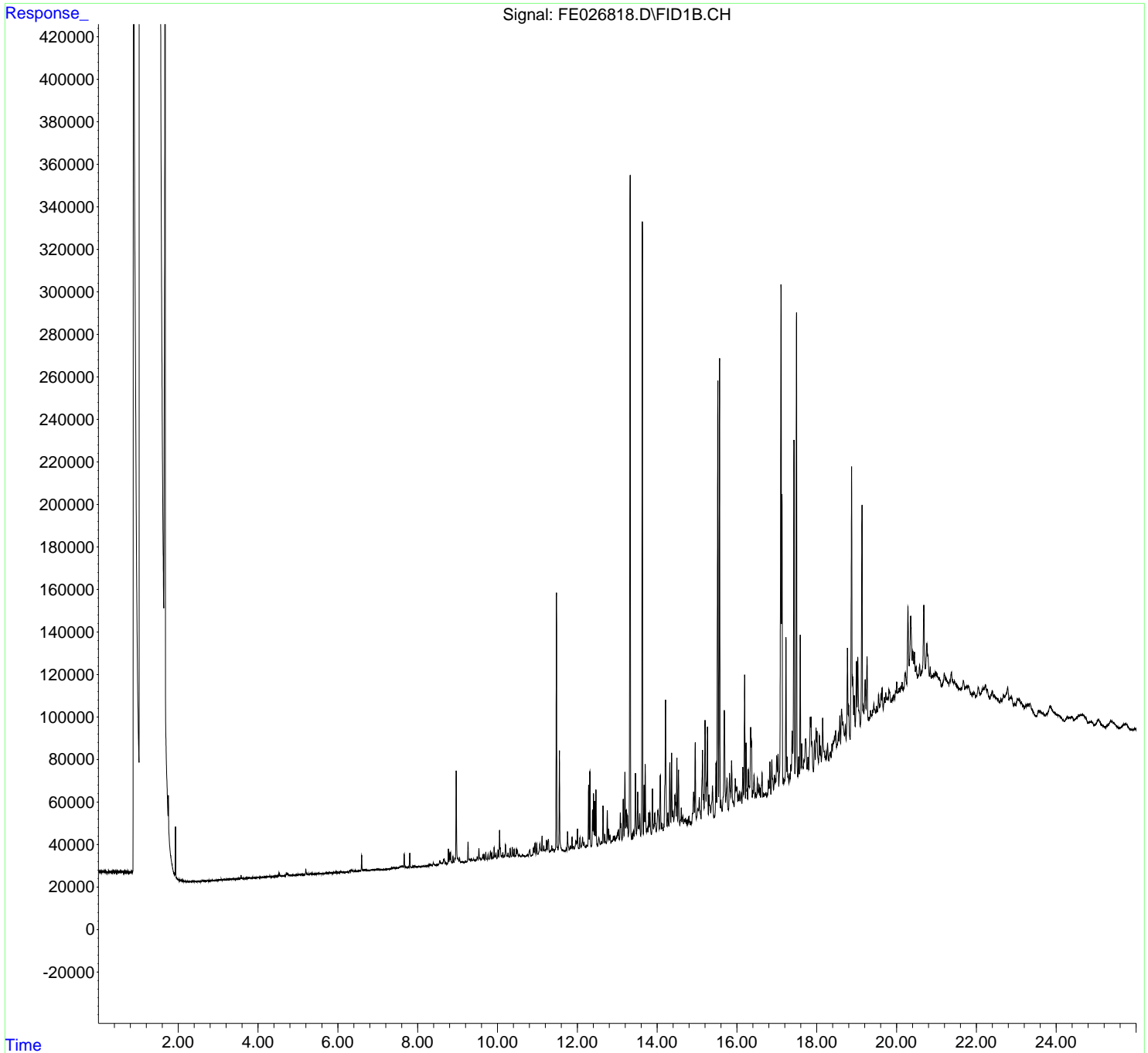
(f)=RT Delta > 1/2 Window

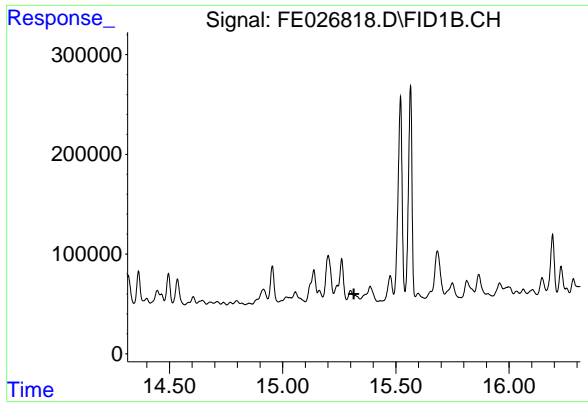
(m)=manual int.

Data Path : P:\HPCHEM1\FID\_E\Data\FE050218\  
Data File : FE026818.D  
Signal(s) : FID1B.CH  
Acq On : 02 May 2018 14:18  
Operator : UA/AJ  
Sample : J2157-13 20X  
Misc :  
ALS Vial : 11 Sample Multiplier: 1

Integration File: autoint1.e  
Quant Time: May 03 07:52:26 2018  
Quant Method : P:\HPCHEM1\FID\_E\methods\FE040918.M  
Quant Title :  
QLast Update : Mon Apr 09 14:09:36 2018  
Response via : Initial Calibration  
Integrator: ChemStation 6890 Scale Mode: Large solvent peaks clipped

Volume Inj. : 1uL  
Signal Phase : Rxi-1ms  
Signal Info : 20mx0.18mmx0.18um





#9 TETRACOSANE-d50 (SURROGATE)

R.T.: 0.000 min  
Exp R.T. : 15.314 min  
Response: 0  
Conc: N.D.