

Data Path : Z:\pestpcbsrv\HPCHEM1\FID_G\Data\FG022725AR\
 Data File : FG015419.D
 Signal(s) : FID1A.ch
 Acq On : 27 Feb 2025 18:18
 Operator : YP\AJ
 Sample : I.BLK
 Misc :
 ALS Vial : 1 Sample Multiplier: 1

Instrument :
 FID_G
 ClientSampleId :

Integration File: autoint1.e
 Quant Time: Feb 28 02:26:20 2025
 Quant Method : Z:\pestpcbsrv\HPCHEM1\FID_G\Method\Aromatic EPH 022525.M
 Quant Title : GC Extractables
 QLast Update : Tue Feb 25 16:10:05 2025
 Response via : Initial Calibration
 Integrator: ChemStation

Volume Inj. : 1 µl
 Signal Phase : Rxi-1ms
 Signal Info : 20M x 0.18mm x 0.18µm

Compound	R.T.	Response	Conc Units

System Monitoring Compounds			
Target Compounds			

(f)=RT Delta > 1/2 Window

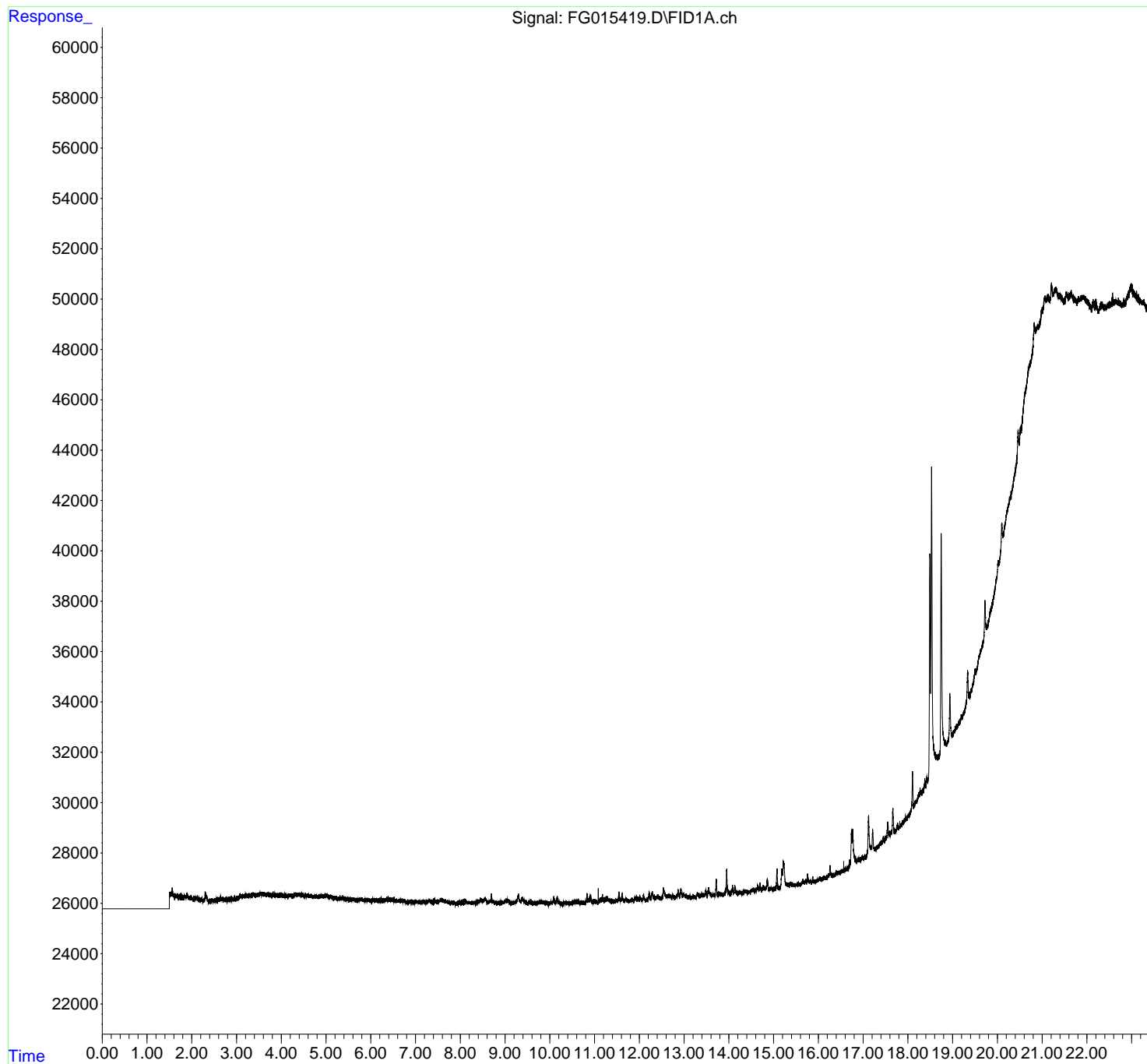
(m)=manual int.

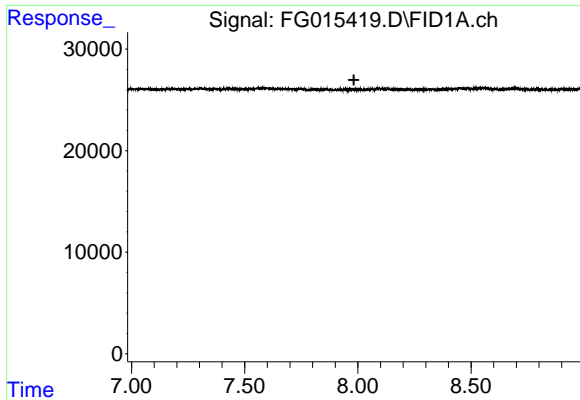
Data Path : Z:\pestpcbsrv\HPCHEM1\FID_G\Data\FG022725AR\
Data File : FG015419.D
Signal(s) : FID1A.ch
Acq On : 27 Feb 2025 18:18
Operator : YP\AJ
Sample : I.BLK
Misc :
ALS Vial : 1 Sample Multiplier: 1

Instrument :
FID_G
ClientSampleId :

Integration File: autoint1.e
Quant Time: Feb 28 02:26:20 2025
Quant Method : Z:\pestpcbsrv\HPCHEM1\FID_G\Method\Aromatic EPH 022525.M
Quant Title : GC Extractables
QLast Update : Tue Feb 25 16:10:05 2025
Response via : Initial Calibration
Integrator: ChemStation

Volume Inj. : 1 μ l
Signal Phase : Rxi-1ms
Signal Info : 20M x 0.18mm x 0.18 μ m

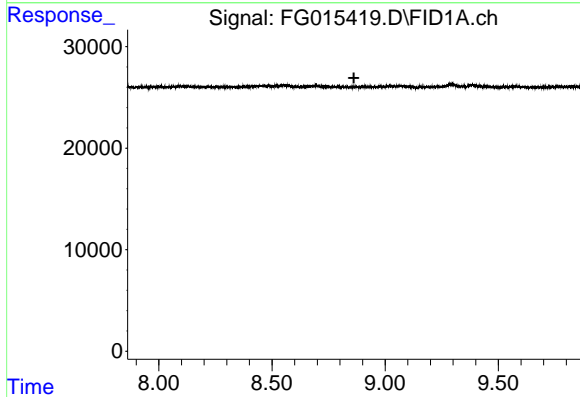




#4 2-Bromonaphthalene (SURR)

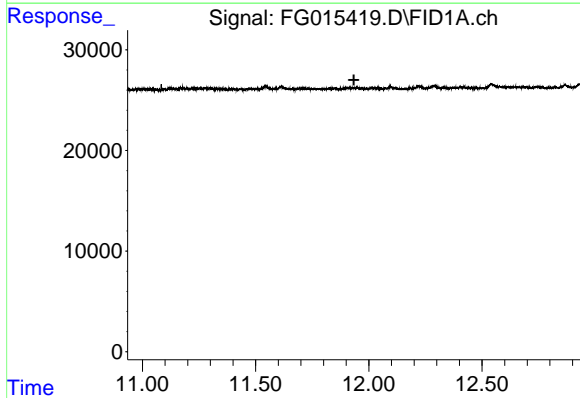
R.T.: 0.000 min
Exp R.T. : 7.983 min
Response: 0
Conc: N.D.

Instrument : FID_G
ClientSampleId :



#6 2-Fluorobiphenyl (SURR)

R.T.: 0.000 min
Exp R.T. : 8.862 min
Response: 0
Conc: N.D.



#11 ortho-Terphenyl (SURR)

R.T.: 0.000 min
Exp R.T. : 11.934 min
Response: 0
Conc: N.D.