

Data Path : Z:\pestpcbsrv\HPCHEM1\FID\_G\Data\FG033023\  
Data File : FG011692.D  
Signal(s) : FID1A.ch  
Acq On : 30 Mar 2023 10:10  
Operator : YP\AJ  
Sample : MECL2  
Misc :  
ALS Vial : 1 Sample Multiplier: 1

Instrument :  
FID\_G  
ClientSampleId :  
MECL2

Integration File: Sample.e  
Quant Time: Mar 31 00:04:37 2023  
Quant Method : Z:\pestpcbsrv\HPCHEM1\FID\_G\Method\FG031523.M  
Quant Title :  
QLast Update : Wed Mar 15 18:43:49 2023  
Response via : Initial Calibration  
Integrator: ChemStation

Volume Inj. : 1uL  
Signal Phase : Rxi-1ms  
Signal Info : 20mx0.18mmx0.18um

Compound	R.T.	Response	Conc Units
----------	------	----------	------------

-----  
System Monitoring Compounds

Target Compounds  
-----

(f)=RT Delta > 1/2 Window

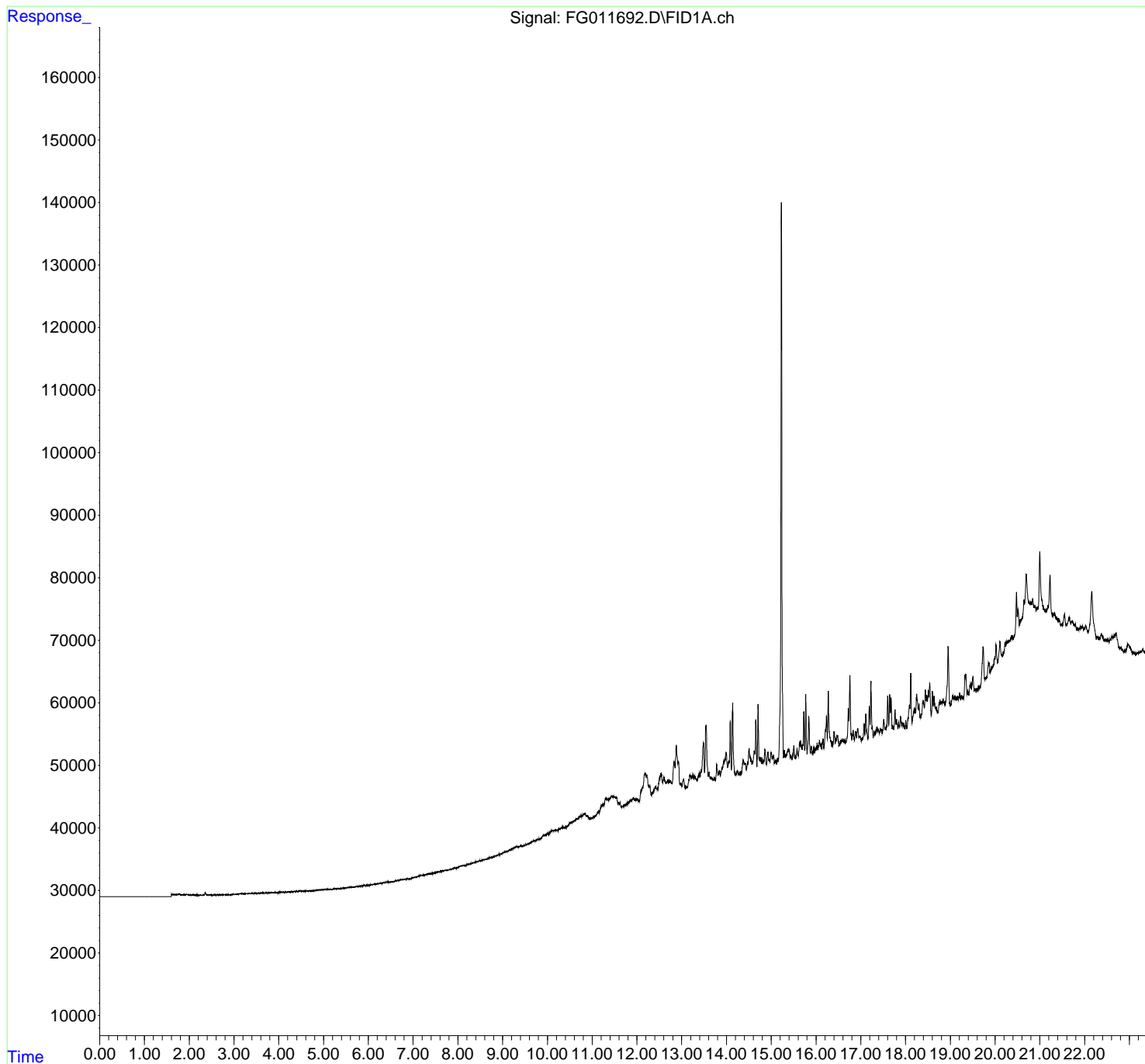
(m)=manual int.

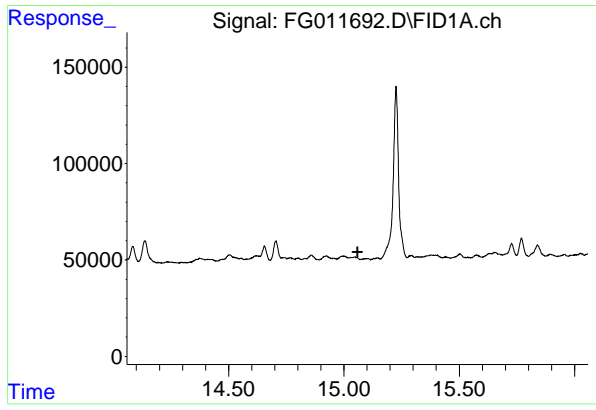
Data Path : Z:\pestpcbsrv\HPCHEM1\FID\_G\Data\FG033023\  
 Data File : FG011692.D  
 Signal(s) : FID1A.ch  
 Acq On : 30 Mar 2023 10:10  
 Operator : YP\AJ  
 Sample : MECL2  
 Misc :  
 ALS Vial : 1 Sample Multiplier: 1

**Instrument :**  
 FID\_G  
**ClientSampleId :**  
 MECL2

Integration File: Sample.e  
 Quant Time: Mar 31 00:04:37 2023  
 Quant Method : Z:\pestpcbsrv\HPCHEM1\FID\_G\Method\FG031523.M  
 Quant Title :  
 QLast Update : Wed Mar 15 18:43:49 2023  
 Response via : Initial Calibration  
 Integrator: ChemStation

Volume Inj. : 1uL  
 Signal Phase : Rxi-1ms  
 Signal Info : 20mx0.18mmx0.18um





#9 TETRACOSANE-d50 (SURROGATE)

R.T.: 0.000 min  
Exp R.T. : 15.059 min  
Response: 0  
Conc: N.D.

Instrument :  
FID\_G  
ClientSampleId :  
MECL2