

Data Path : Z:\pestpcbsrv\HPCHEM1\FID_G\Data\FG041725AL\
Data File : FG015687.D
Signal(s) : FID1A.ch
Acq On : 17 Apr 2025 13:15
Operator : YP\AJ
Sample : I.BLK
Misc :
ALS Vial : 1 Sample Multiplier: 1

Instrument :
FID_G
ClientSampleId :
I.BLK

Integration File: autoint1.e
Quant Time: Apr 17 14:14:37 2025
Quant Method : Z:\pestpcbsrv\HPCHEM1\FID_G\Method\Aliphatic EPH 041725.M
Quant Title : GC Extractables
QLast Update : Thu Apr 17 12:40:13 2025
Response via : Initial Calibration
Integrator: ChemStation

Volume Inj. : 1 ul
Signal Phase : Rxi-1ms
Signal Info : 20M x 0.18mm x 0.18um

Compound	R.T.	Response	Conc Units

System Monitoring Compounds			
Target Compounds			

(f)=RT Delta > 1/2 Window

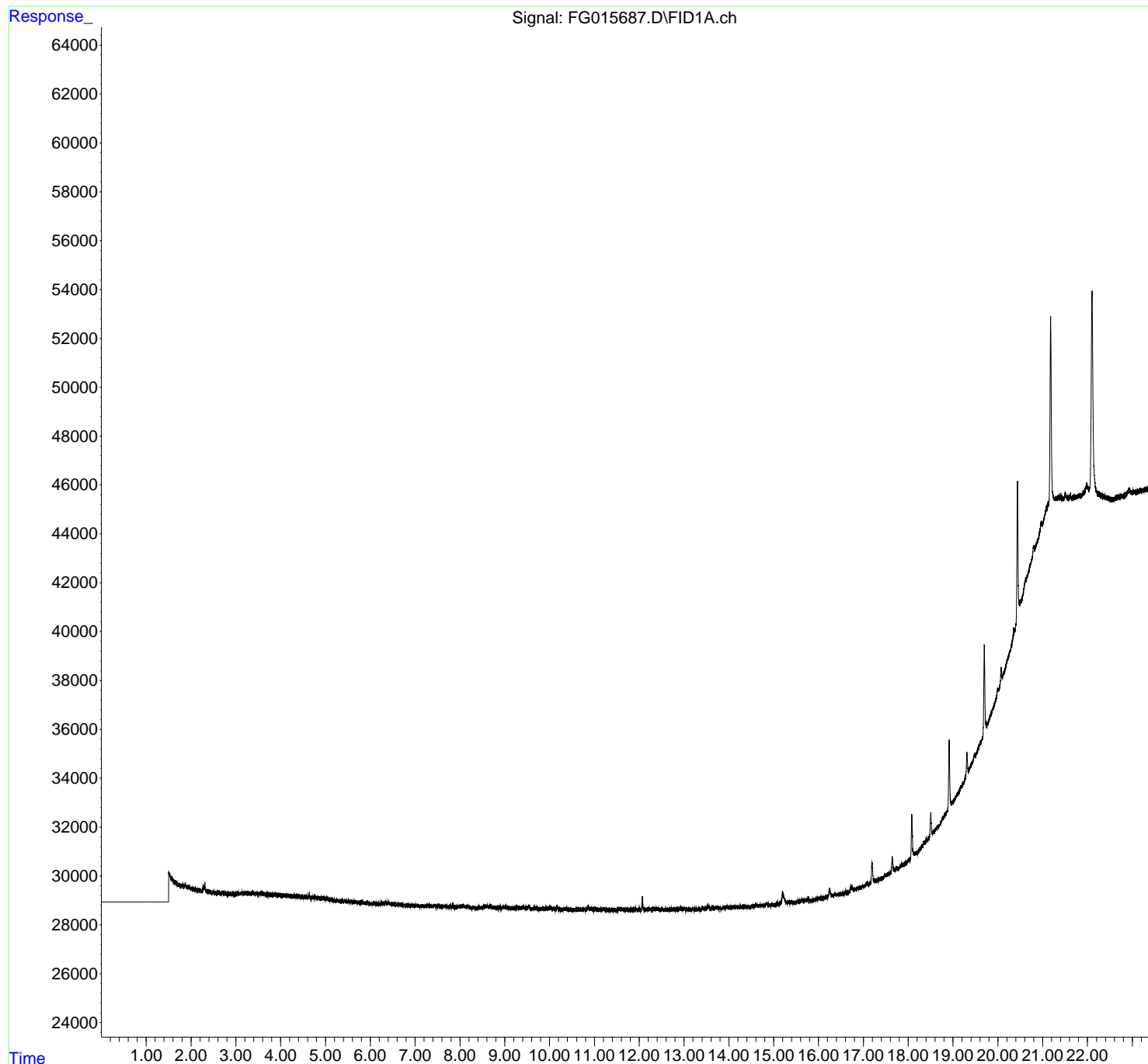
(m)=manual int.

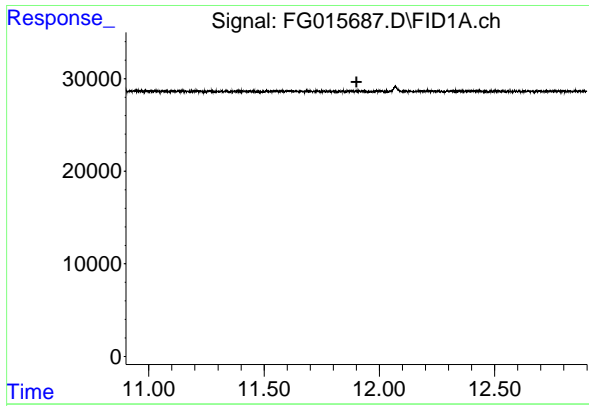
Data Path : Z:\pestpcbsrv\HPCHEM1\FID_G\Data\FG041725AL\
Data File : FG015687.D
Signal(s) : FID1A.ch
Acq On : 17 Apr 2025 13:15
Operator : YP\AJ
Sample : I.BLK
Misc :
ALS Vial : 1 Sample Multiplier: 1

Instrument :
FID_G
ClientSampleId :
I.BLK

Integration File: autoint1.e
Quant Time: Apr 17 14:14:37 2025
Quant Method : Z:\pestpcbsrv\HPCHEM1\FID_G\Method\Aliphatic EPH 041725.M
Quant Title : GC Extractables
QLast Update : Thu Apr 17 12:40:13 2025
Response via : Initial Calibration
Integrator: ChemStation

Volume Inj. : 1 ul
Signal Phase : Rxi-1ms
Signal Info : 20M x 0.18mm x 0.18um

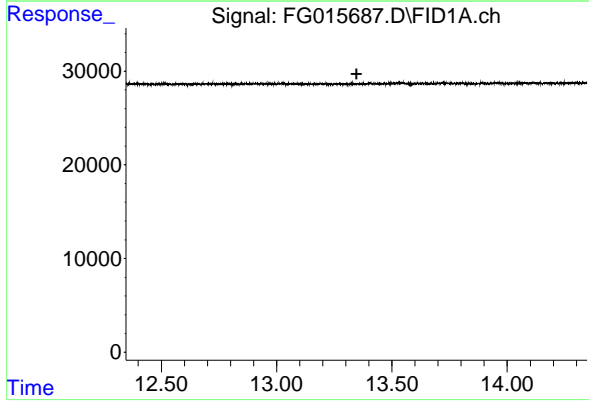




#9 ortho-Terphenyl (SURR)

R.T.: 0.000 min
Exp R.T. : 11.901 min
Response: 0
Conc: N.D.

Instrument :
FID_G
ClientSampleId :
I.BLK



#12 1-chlorooctadecane (SURR)

R.T.: 0.000 min
Exp R.T. : 13.347 min
Response: 0
Conc: N.D.