

Data Path : Z:\pestpcbsrv\HPCHEM1\ECD\_D\Data\PD051520\  
 Data File : PD057996.D  
 Signal(s) : Signal #1: ECD1A.ch Signal #2: ECD2B.ch  
 Acq On : 15 May 2020 14:56  
 Operator : AJ\MA  
 Sample : L2660-12  
 Misc :  
 ALS Vial : 21 Sample Multiplier: 1

Integration File signal 1: autoint1.e  
 Integration File signal 2: autoint2.e  
 Quant Time: May 16 06:28:34 2020  
 Quant Method : Z:\pestpcbsrv\HPCHEM1\ECD\_D\Method\PD042920CLP.M  
 Quant Title : GC Extractables  
 QLast Update : Thu Apr 30 07:30:11 2020  
 Response via : Initial Calibration  
 Integrator: ChemStation

Volume Inj. : 1 µl  
 Signal #1 Phase : ZB-MR2 Signal #2 Phase: ZB-MR1  
 Signal #1 Info : 30M x 0.32mm x0.2 Signal #2 Info : 30M x 0.32mm x 0.50µm

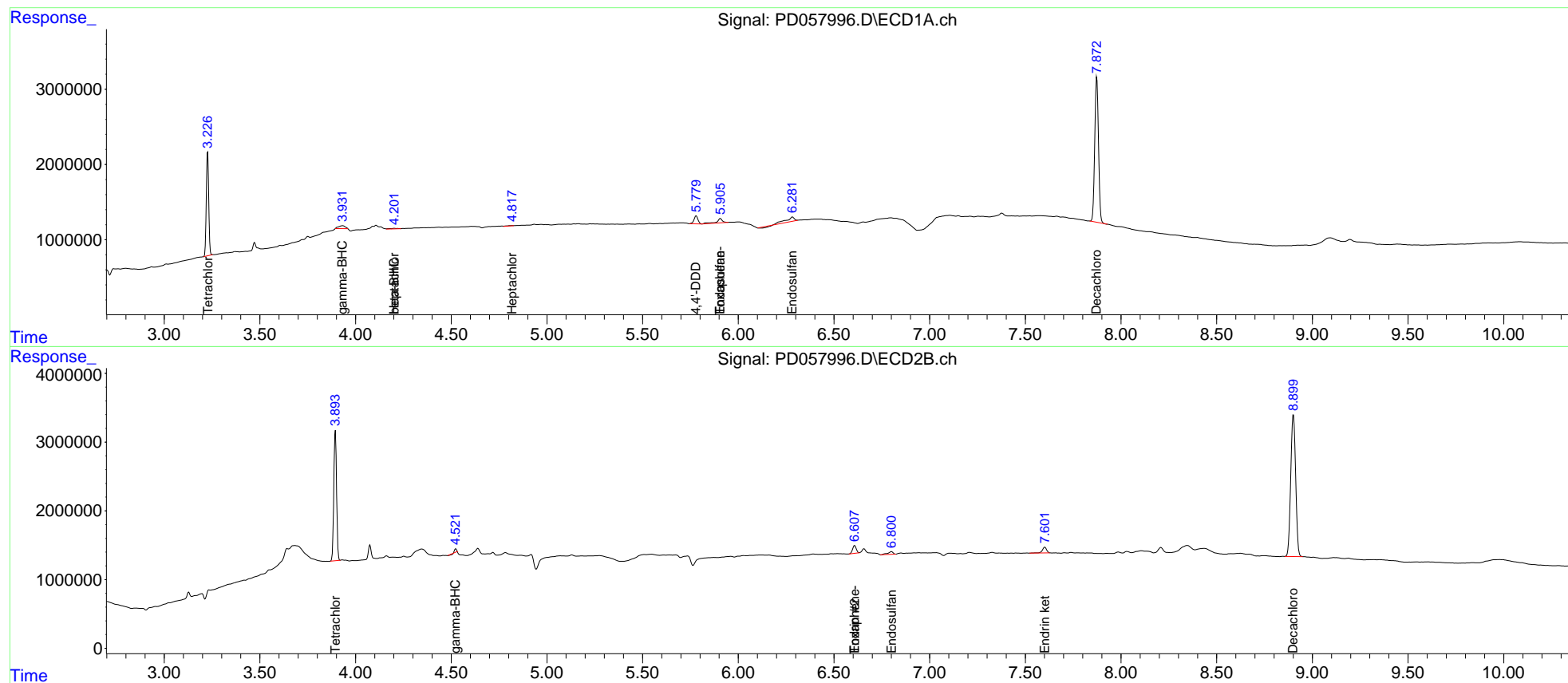
Compound	RT#1	RT#2	Resp#1	Resp#2	ng/ml	ng/ml
-----						
System Monitoring Compounds						
1) SA Tetrachlo...	3.228	3.895	12227582	19098978	14.644	13.910
27) SA Decachlor...	7.873	8.901	26219997	36985235	27.278	25.542
Target Compounds						
3) MA gamma-BHC...	3.933	4.524f	999067	259519	0.852	0.144 #
4) MA Heptachlor	4.203	0.000	182510	0	0.176	N.D. #
6) B beta-BHC	4.203f	0.000	182510	0	0.373	N.D. #
8) B Heptachlo...	4.818f	0.000	100218	0	0.107	N.D. #
14) MA Endrin	0.000	6.608f	0	1493265	N.D.	0.984
15) B Endosulfa...	5.907f	6.801	1241671	741173	1.450	0.527 #
16) A 4,4'-DDD	5.780f	0.000	1544821	0	1.901	N.D. #
19) B Endosulfa...	6.283f	0.000	1600538	0	1.834	N.D. #
21) B Endrin ke...	0.000	7.602	0	1314365	N.D.	0.858
23) Toxaphene-2	0.000	6.608	0	1493265	N.D.	144.671
24) Toxaphene-3	5.907	0.000	1241671	0	255.121	N.D. #
-----						

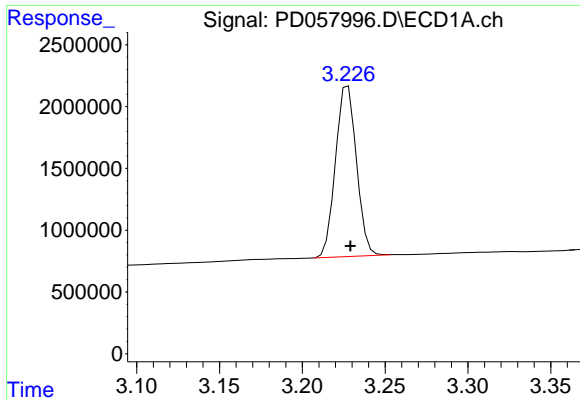
(f)=RT Delta > 1/2 Window (#)=Amounts differ by > 25% (m)=manual int.

Data Path : Z:\pestpcbsrv\HPCHEM1\ECD\_D\Data\PD051520\  
 Data File : PD057996.D  
 Signal(s) : Signal #1: ECD1A.ch Signal #2: ECD2B.ch  
 Acq On : 15 May 2020 14:56  
 Operator : AJ\MA  
 Sample : L2660-12  
 Misc :  
 ALS Vial : 21 Sample Multiplier: 1

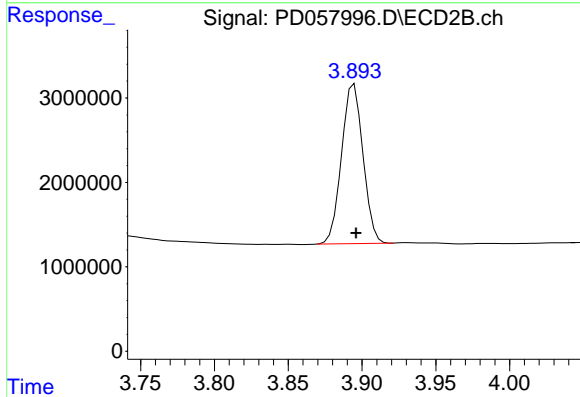
Integration File signal 1: autoint1.e  
 Integration File signal 2: autoint2.e  
 Quant Time: May 16 06:28:34 2020  
 Quant Method : Z:\pestpcbsrv\HPCHEM1\ECD\_D\Method\PD042920CLP.M  
 Quant Title : GC Extractables  
 QLast Update : Thu Apr 30 07:30:11 2020  
 Response via : Initial Calibration  
 Integrator: ChemStation

Volume Inj. : 1 µl  
 Signal #1 Phase : ZB-MR2 Signal #2 Phase: ZB-MR1  
 Signal #1 Info : 30M x 0.32mm x0.2 Signal #2 Info : 30M x 0.32mm x 0.50µm

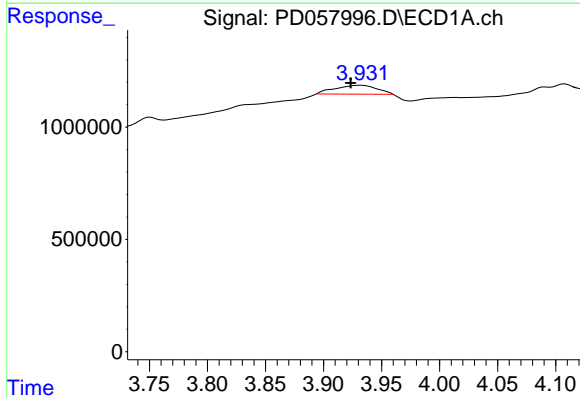




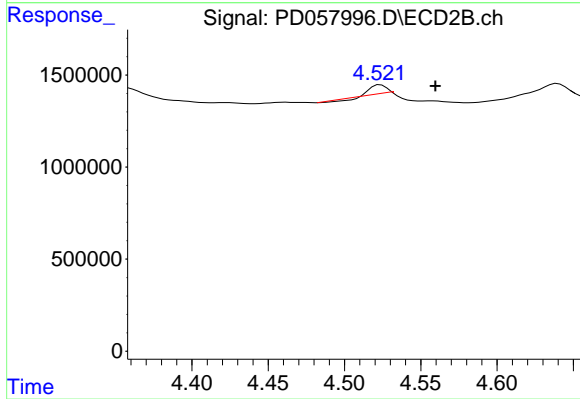
#1 Tetrachloro-m-xylene  
R.T.: 3.228 min  
Delta R.T.: -0.001 min  
Response: 12227582  
Conc: 14.64 ng/ml



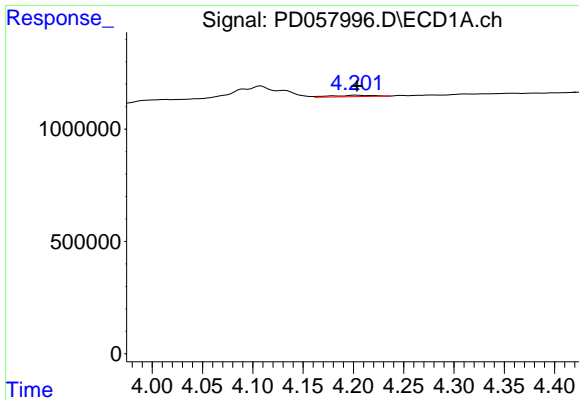
#1 Tetrachloro-m-xylene  
R.T.: 3.895 min  
Delta R.T.: -0.001 min  
Response: 19098978  
Conc: 13.91 ng/ml



#3 gamma-BHC (Lindane)  
R.T.: 3.933 min  
Delta R.T.: 0.009 min  
Response: 999067  
Conc: 0.85 ng/ml

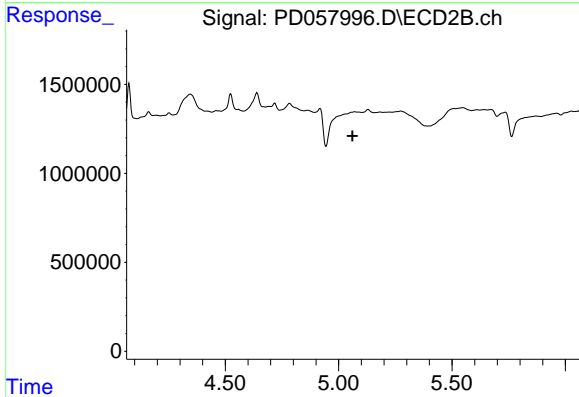


#3 gamma-BHC (Lindane)  
R.T.: 4.524 min  
Delta R.T.: -0.036 min  
Response: 259519  
Conc: 0.14 ng/ml



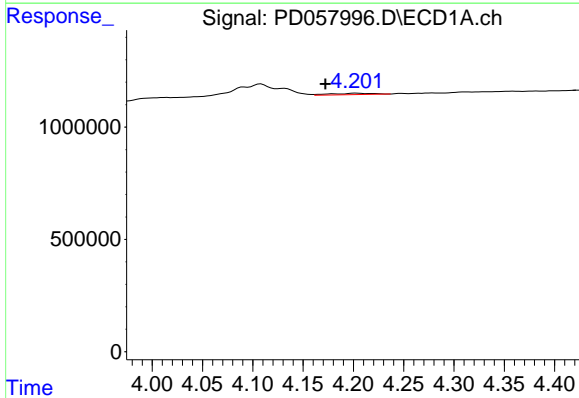
#4 Heptachlor

R.T.: 4.203 min  
 Delta R.T.: 0.000 min  
 Response: 182510  
 Conc: 0.18 ng/ml



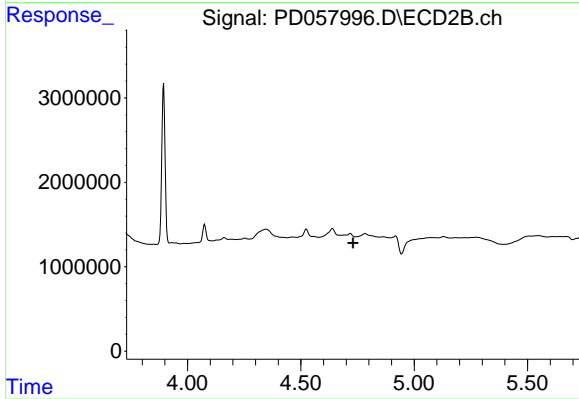
#4 Heptachlor

R.T.: 0.000 min  
 Exp R.T. : 5.061 min  
 Response: 0  
 Conc: N.D.



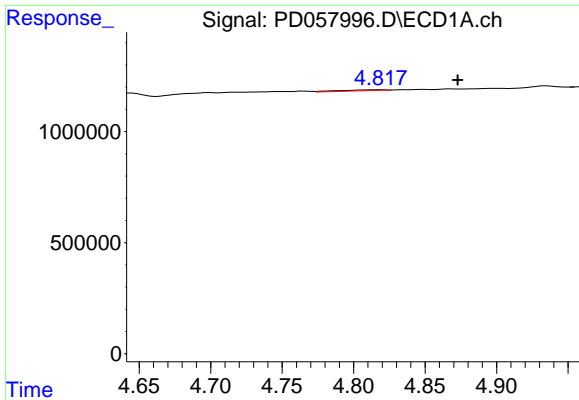
#6 beta-BHC

R.T.: 4.203 min  
 Delta R.T.: 0.031 min  
 Response: 182510  
 Conc: 0.37 ng/ml



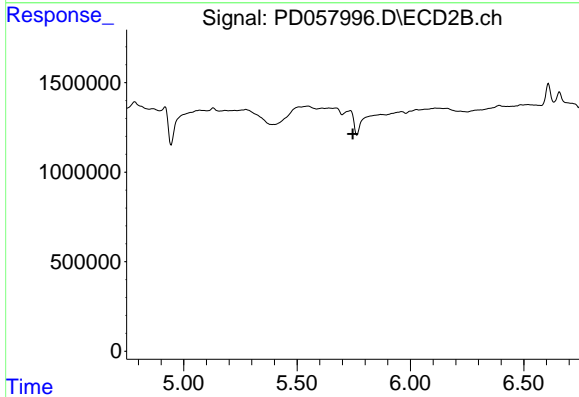
#6 beta-BHC

R.T.: 0.000 min  
 Exp R.T. : 4.731 min  
 Response: 0  
 Conc: N.D.



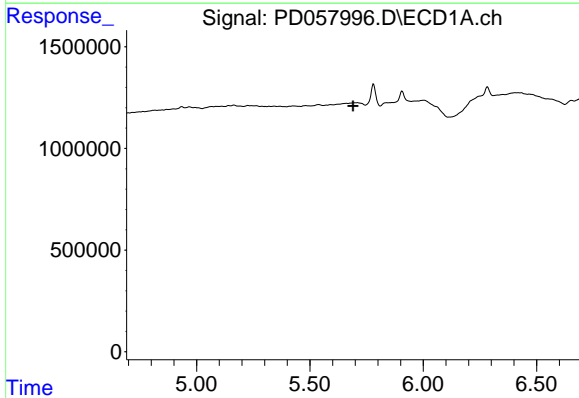
#8 Heptachlor epoxide

R.T.: 4.818 min  
 Delta R.T.: -0.055 min  
 Response: 100218  
 Conc: 0.11 ng/ml



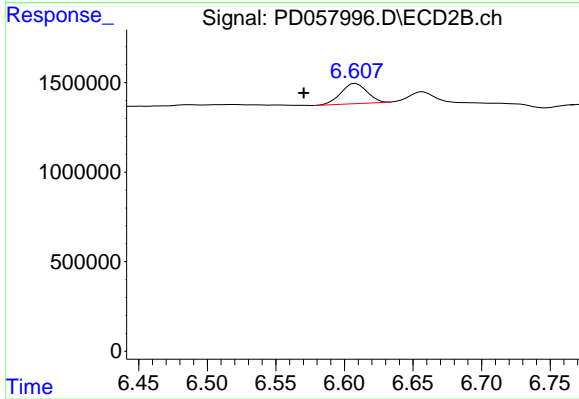
#8 Heptachlor epoxide

R.T.: 0.000 min  
 Exp R.T. : 5.746 min  
 Response: 0  
 Conc: N.D.



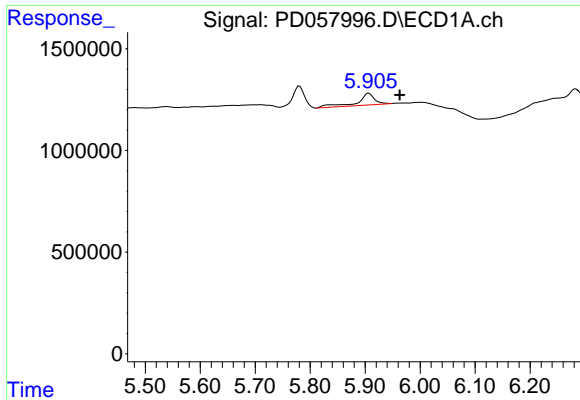
#14 Endrin

R.T.: 0.000 min  
 Exp R.T. : 5.691 min  
 Response: 0  
 Conc: N.D.

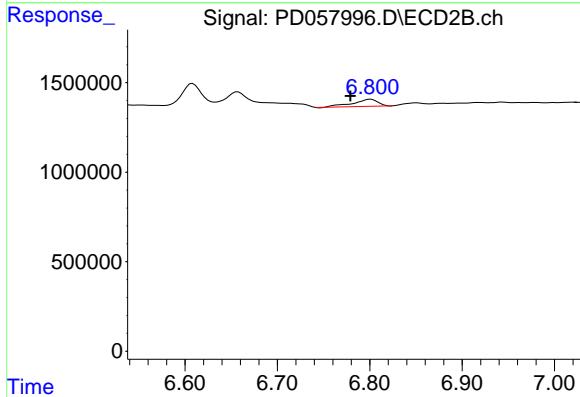


#14 Endrin

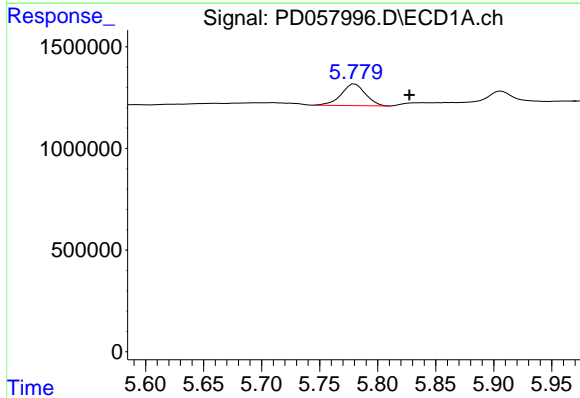
R.T.: 6.608 min  
 Delta R.T.: 0.038 min  
 Response: 1493265  
 Conc: 0.98 ng/ml



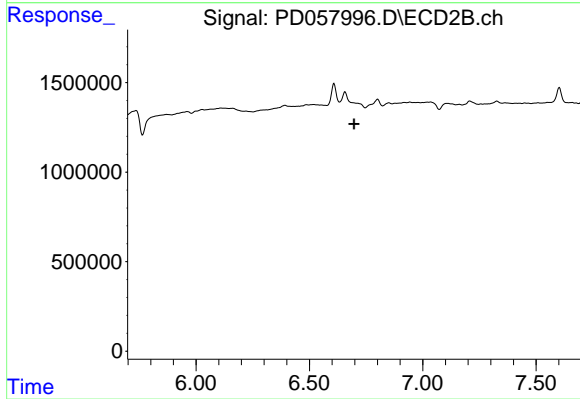
#15 Endosulfan II  
 R.T.: 5.907 min  
 Delta R.T.: -0.056 min  
 Response: 1241671  
 Conc: 1.45 ng/ml



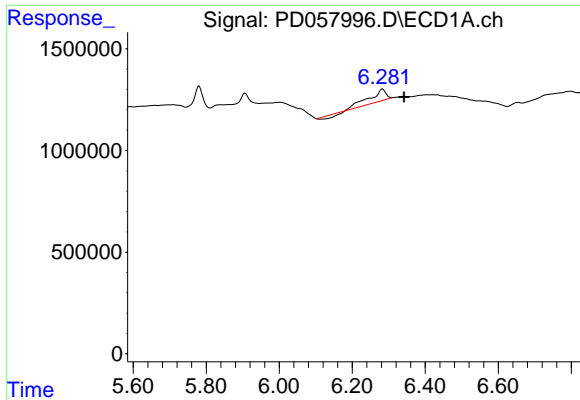
#15 Endosulfan II  
 R.T.: 6.801 min  
 Delta R.T.: 0.022 min  
 Response: 741173  
 Conc: 0.53 ng/ml



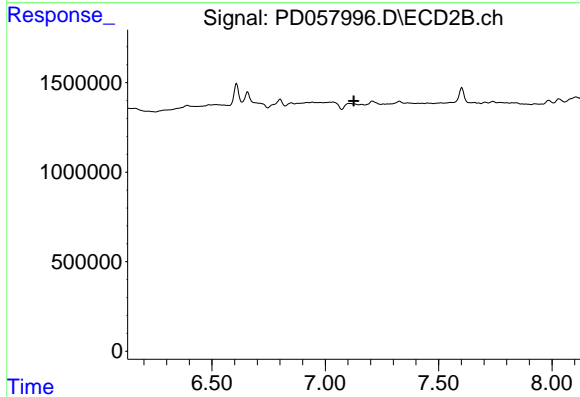
#16 4,4'-DDD  
 R.T.: 5.780 min  
 Delta R.T.: -0.047 min  
 Response: 1544821  
 Conc: 1.90 ng/ml



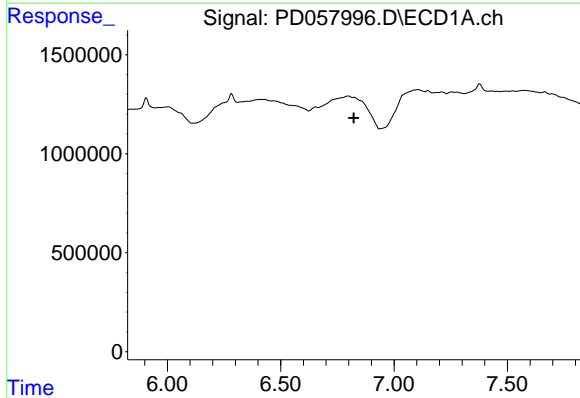
#16 4,4'-DDD  
 R.T.: 0.000 min  
 Exp R.T.: 6.697 min  
 Response: 0  
 Conc: N.D.



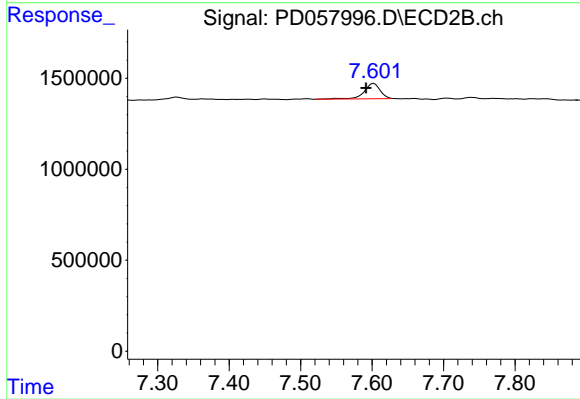
#19 Endosulfan Sulfate  
 R.T.: 6.283 min  
 Delta R.T.: -0.059 min  
 Response: 1600538  
 Conc: 1.83 ng/ml



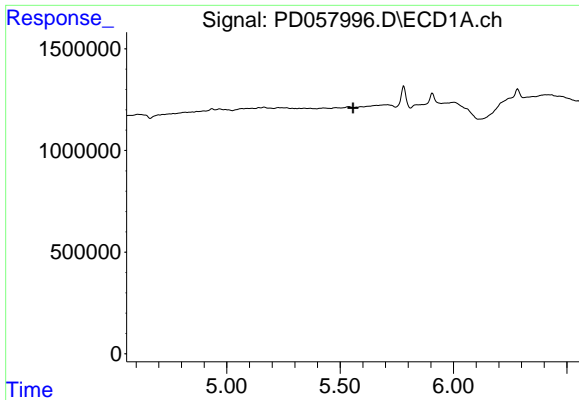
#19 Endosulfan Sulfate  
 R.T.: 0.000 min  
 Exp R.T. : 7.125 min  
 Response: 0  
 Conc: N.D.



#21 Endrin ketone  
 R.T.: 0.000 min  
 Exp R.T. : 6.823 min  
 Response: 0  
 Conc: N.D.

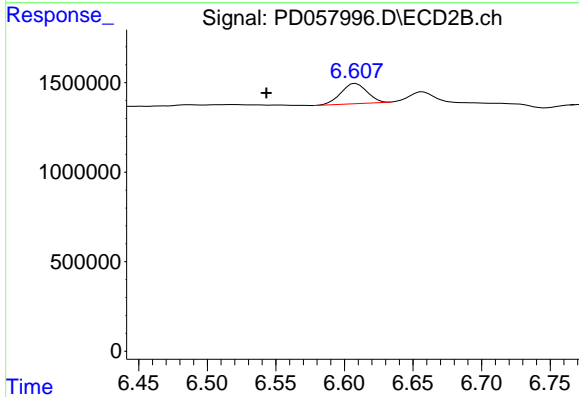


#21 Endrin ketone  
 R.T.: 7.602 min  
 Delta R.T.: 0.011 min  
 Response: 1314365  
 Conc: 0.86 ng/ml



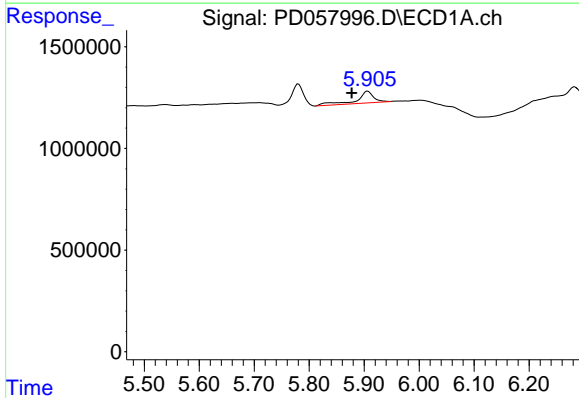
#23 Toxaphene-2

R.T.: 0.000 min  
 Exp R.T. : 5.558 min  
 Response: 0  
 Conc: N.D.



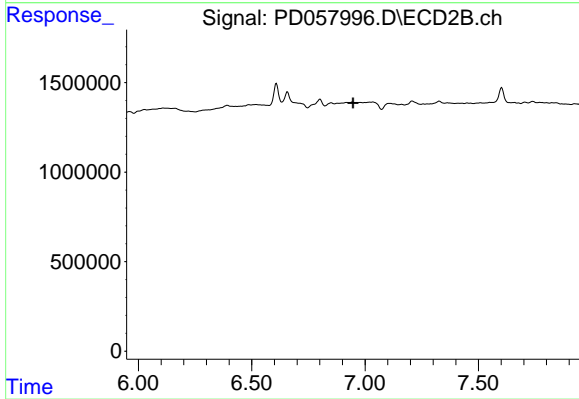
#23 Toxaphene-2

R.T.: 6.608 min  
 Delta R.T.: 0.065 min  
 Response: 1493265  
 Conc: 144.67 ng/ml



#24 Toxaphene-3

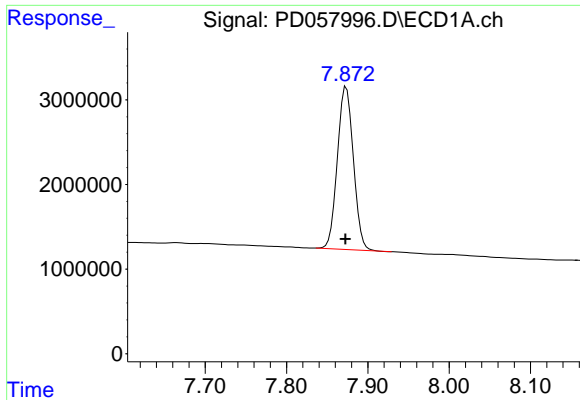
R.T.: 5.907 min  
 Delta R.T.: 0.029 min  
 Response: 1241671  
 Conc: 255.12 ng/ml



#24 Toxaphene-3

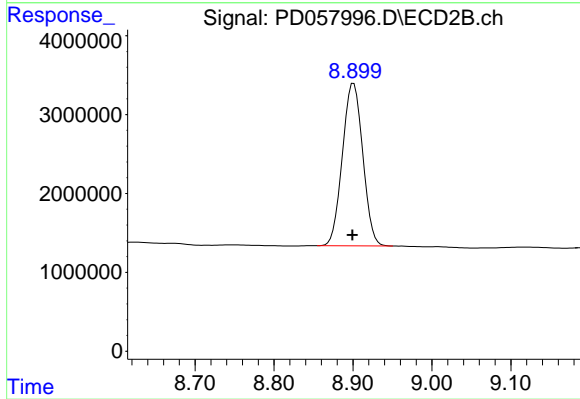
R.T.: 0.000 min  
 Exp R.T. : 6.948 min  
 Response: 0  
 Conc: N.D.





#27 Decachlorobiphenyl

R.T.: 7.873 min  
Delta R.T.: 0.001 min  
Response: 26219997  
Conc: 27.28 ng/ml



#27 Decachlorobiphenyl

R.T.: 8.901 min  
Delta R.T.: 0.001 min  
Response: 36985235  
Conc: 25.54 ng/ml