

Data Path : Z:\pestpcbsrv\HPCHEM1\FID_G\Data\FG052023AL\
 Data File : FG011929.D
 Signal(s) : FID1A.ch
 Acq On : 20 May 2023 20:43
 Operator : YP\AJ
 Sample : 02849-24
 Misc :
 ALS Vial : 25 Sample Multiplier: 1

Instrument :
 FID_G
 ClientSampleId :

Integration File: autoint1.e
 Quant Time: May 21 02:56:34 2023
 Quant Method : Z:\pestpcbsrv\HPCHEM1\FID_G\Method\Aliphatic EPH 051923.M
 Quant Title : GC Extractables
 QLast Update : Fri May 19 12:59:06 2023
 Response via : Initial Calibration
 Integrator: ChemStation

Volume Inj. : 1 ul
 Signal Phase : Rxi-1ms
 Signal Info : 20M x 0.18mm x 0.18um

Compound	R.T.	Response	Conc Units

System Monitoring Compounds			
9) S ortho-Terphenyl (SURR)	10.928	4811623	30.742 ug/ml
Spiked Amount	50.000	Recovery	= 61.48%
12) S 1-chlorooctadecane (S...	12.367	3860283	32.554 ug/ml
Spiked Amount	50.000	Recovery	= 65.11%
Target Compounds			
19) T n-Tetratriacontane (C34)	18.770f	180436	1.473 ug/ml

(f)=RT Delta > 1/2 Window

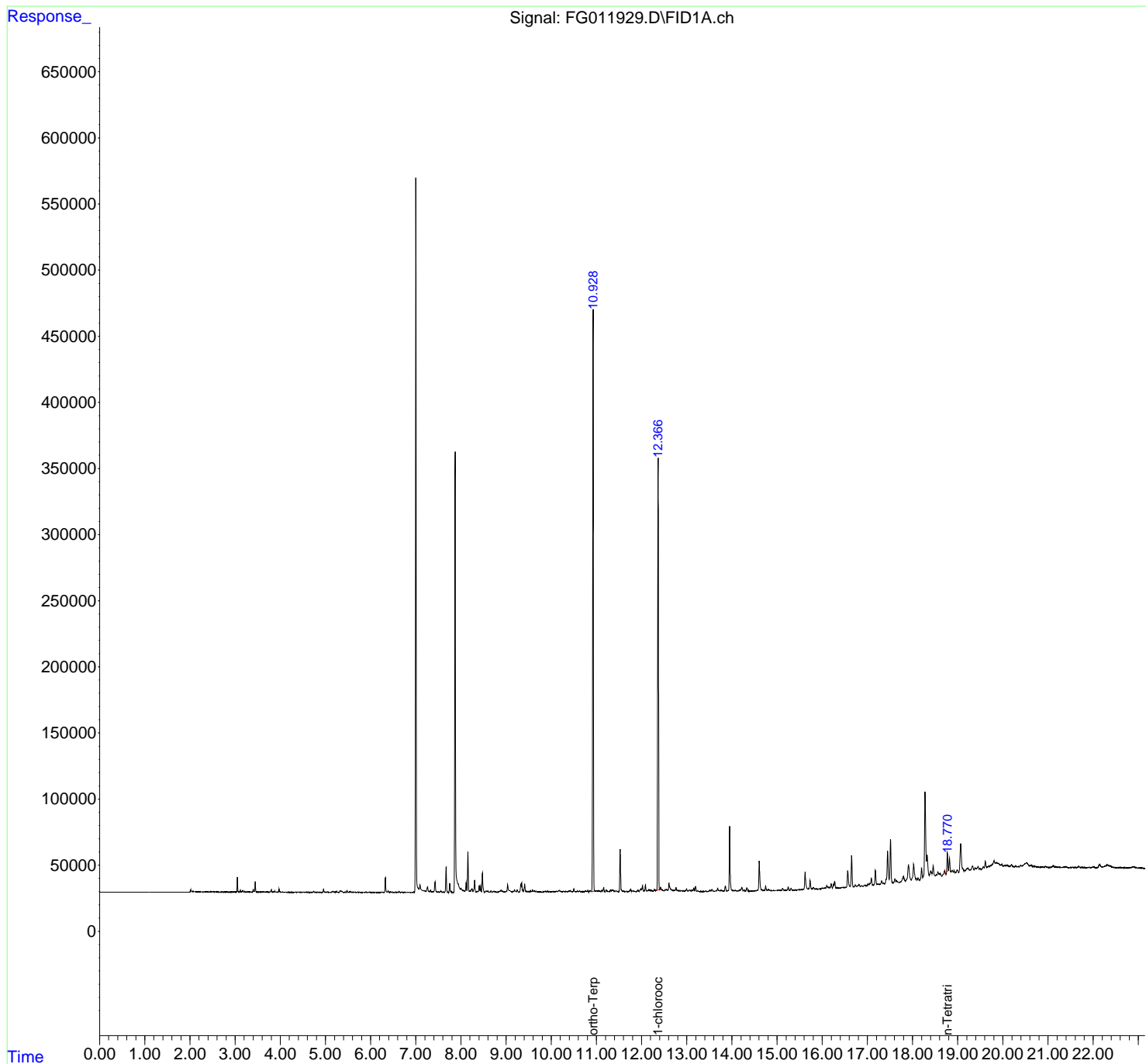
(m)=manual int.

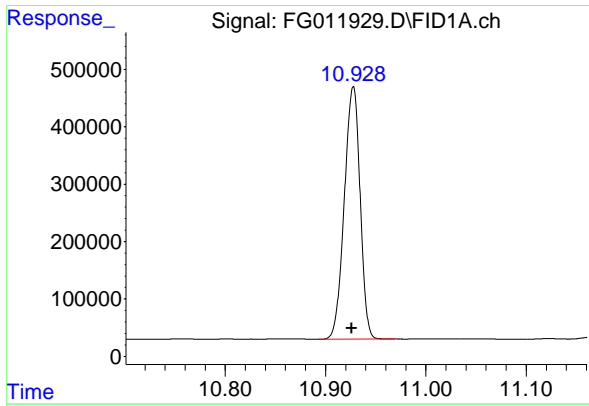
Data Path : Z:\pestpcbsrv\HPCHEM1\FID_G\Data\FG052023AL\
 Data File : FG011929.D
 Signal(s) : FID1A.ch
 Acq On : 20 May 2023 20:43
 Operator : YP\AJ
 Sample : 02849-24
 Misc :
 ALS Vial : 25 Sample Multiplier: 1

Instrument :
 FID_G
 ClientSampleId :

Integration File: autoint1.e
 Quant Time: May 21 02:56:34 2023
 Quant Method : Z:\pestpcbsrv\HPCHEM1\FID_G\Method\Aliphatic EPH 051923.M
 Quant Title : GC Extractables
 QLast Update : Fri May 19 12:59:06 2023
 Response via : Initial Calibration
 Integrator: ChemStation

Volume Inj. : 1 ul
 Signal Phase : Rxi-1ms
 Signal Info : 20M x 0.18mm x 0.18um

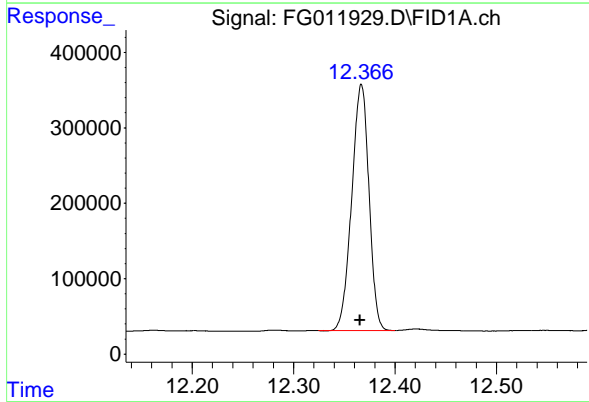




#9 ortho-Terphenyl (SURR)

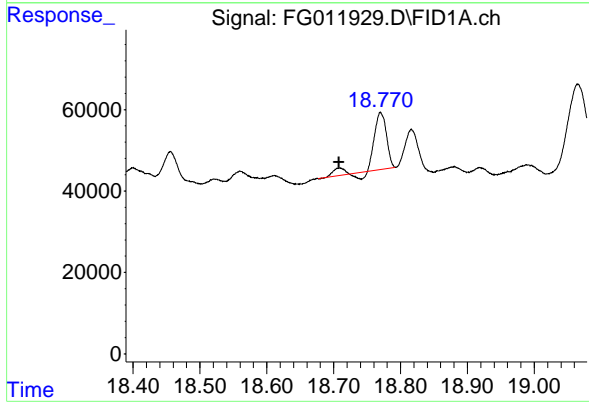
R.T.: 10.928 min
 Delta R.T.: 0.002 min
 Response: 4811623
 Conc: 30.74 ug/ml

Instrument :
 FID_G
 ClientSampleId :



#12 1-chlorooctadecane (SURR)

R.T.: 12.367 min
 Delta R.T.: 0.002 min
 Response: 3860283
 Conc: 32.55 ug/ml



#19 n-Tetratriacontane (C34)

R.T.: 18.770 min
 Delta R.T.: 0.062 min
 Response: 180436
 Conc: 1.47 ug/ml