

Data Path : Z:\pestpcbsrv\HPCHEM1\FID_G\Data\FG071423AL\
 Data File : FG012388.D
 Signal(s) : FID1A.ch
 Acq On : 14 Jul 2023 18:10
 Operator : YP\AJ
 Sample : I.BLK
 Misc :
 ALS Vial : 1 Sample Multiplier: 1

Instrument :
 FID_G
 ClientSampleId :

Integration File: autoint1.e
 Quant Time: Jul 15 01:19:37 2023
 Quant Method : Z:\pestpcbsrv\HPCHEM1\FID_G\Method\Aliphatic EPH 071423.M
 Quant Title : GC Extractables
 QLast Update : Sat Jul 15 01:18:50 2023
 Response via : Initial Calibration
 Integrator: ChemStation

Volume Inj. : 1 ul
 Signal Phase : Rxi-1ms
 Signal Info : 20M x 0.18mm x 0.18um

Compound	R.T.	Response	Conc Units

System Monitoring Compounds			
Target Compounds			
14) T n-Tetracosane (C24)	14.165	139464	0.993 ug/ml
17) T n-Tricontane (C30)	17.050	16009	0.121 ug/ml
19) T n-Tetratriacontane (C34)	18.667	121017	0.944 ug/ml
20) T n-Hexatriacontane (C36)	19.416	30312	0.245 ug/ml

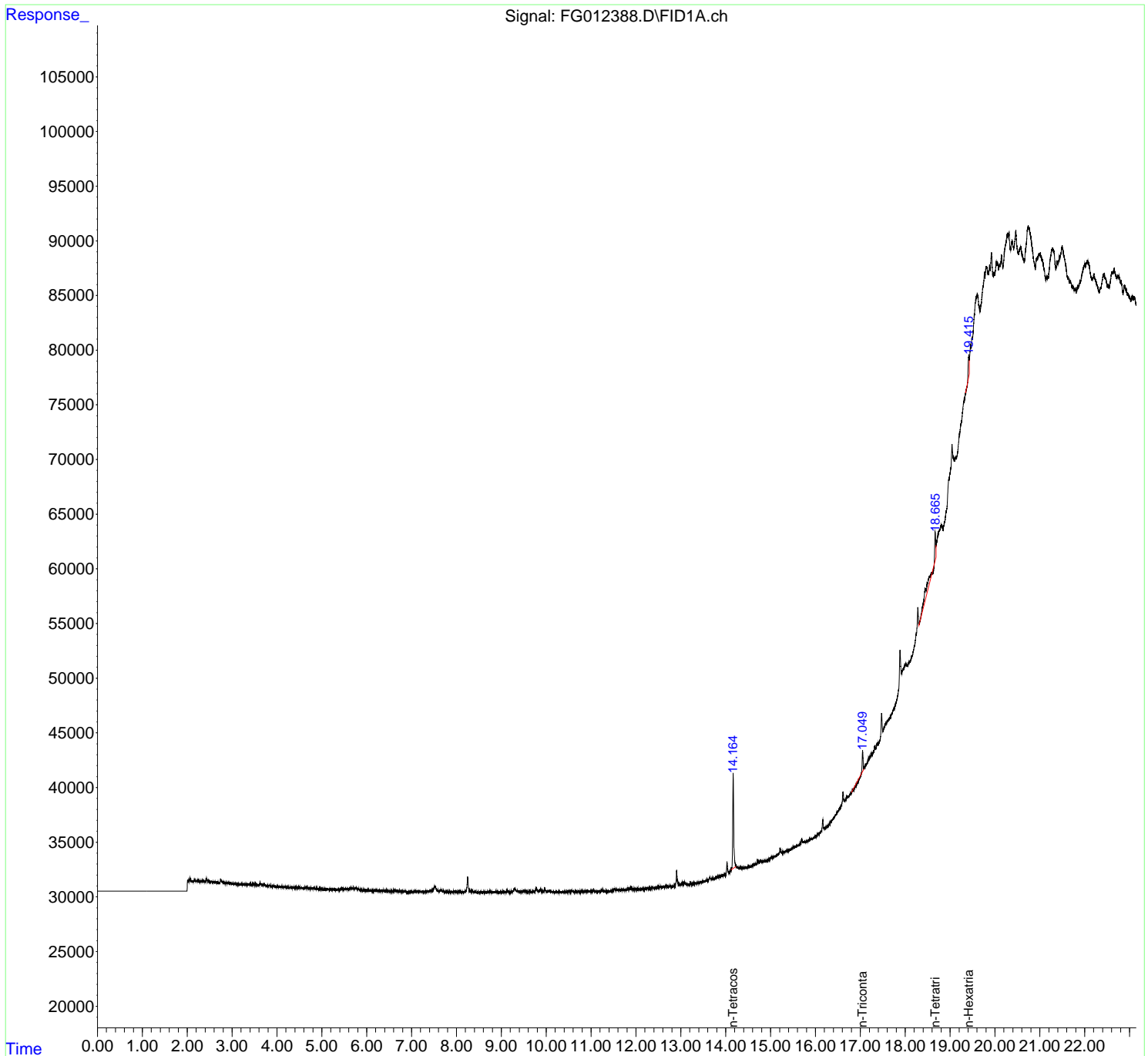
(f)=RT Delta > 1/2 Window (m)=manual int.

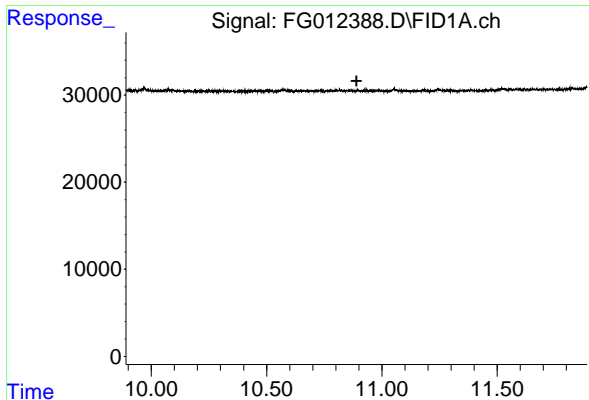
Data Path : Z:\pestpcbsrv\HPCHEM1\FID_G\Data\FG071423AL\
 Data File : FG012388.D
 Signal(s) : FID1A.ch
 Acq On : 14 Jul 2023 18:10
 Operator : YP\AJ
 Sample : I.BLK
 Misc :
 ALS Vial : 1 Sample Multiplier: 1

Instrument :
 FID_G
 ClientSampleId :

Integration File: autoint1.e
 Quant Time: Jul 15 01:19:37 2023
 Quant Method : Z:\pestpcbsrv\HPCHEM1\FID_G\Method\Aliphatic EPH 071423.M
 Quant Title : GC Extractables
 QLast Update : Sat Jul 15 01:18:50 2023
 Response via : Initial Calibration
 Integrator: ChemStation

Volume Inj. : 1 ul
 Signal Phase : Rxi-1ms
 Signal Info : 20M x 0.18mm x 0.18um

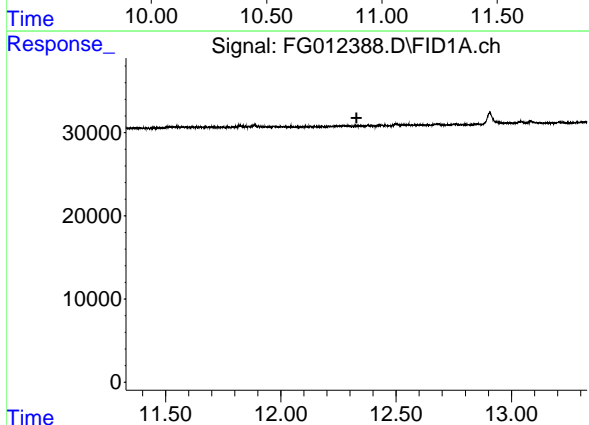




#9 ortho-Terphenyl (SURRE)

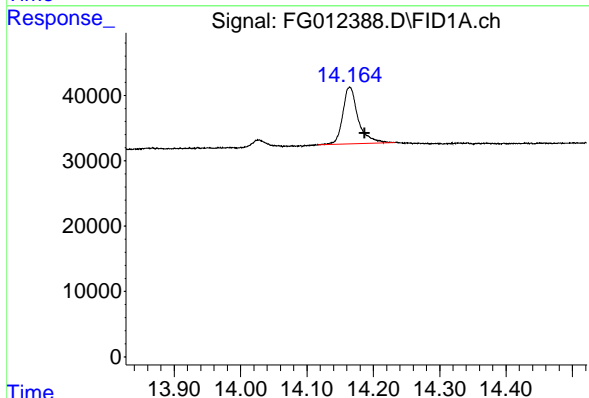
R.T.: 0.000 min
 Exp R.T.: 10.890 min
 Response: 0
 Conc: N.D.

Instrument : FID_G
 ClientSampleId :



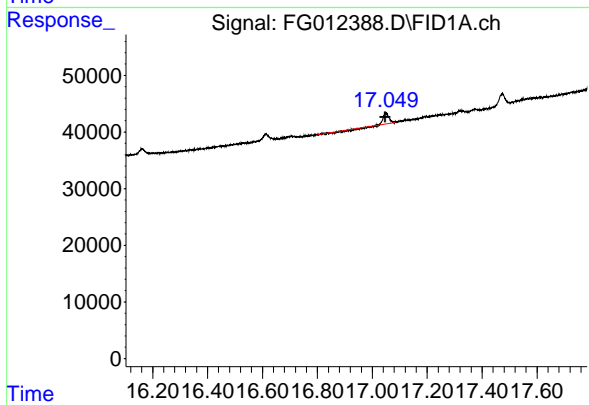
#12 1-chlorooctadecane (SURRE)

R.T.: 0.000 min
 Exp R.T.: 12.328 min
 Response: 0
 Conc: N.D.



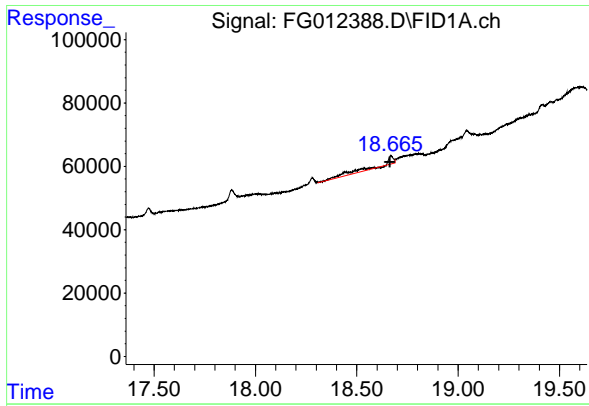
#14 n-Tetracosane (C24)

R.T.: 14.165 min
 Delta R.T.: -0.022 min
 Response: 139464
 Conc: 0.99 ug/ml



#17 n-Tricontane (C30)

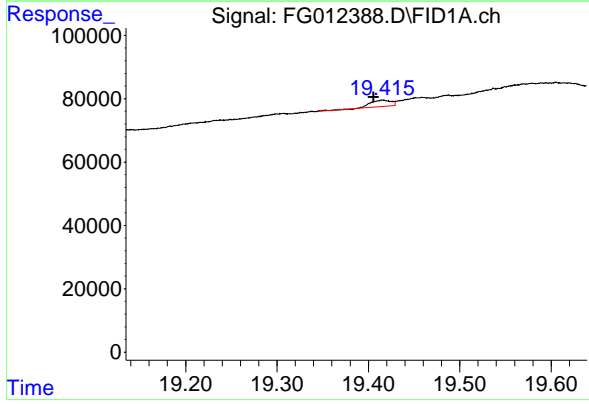
R.T.: 17.050 min
 Delta R.T.: 0.002 min
 Response: 16009
 Conc: 0.12 ug/ml



#19 n-Tetratriacontane (C34)

R.T.: 18.667 min
Delta R.T.: 0.002 min
Response: 121017
Conc: 0.94 ug/ml

Instrument :
FID_G
ClientSampleId :



#20 n-Hexatriacontane (C36)

R.T.: 19.416 min
Delta R.T.: 0.010 min
Response: 30312
Conc: 0.25 ug/ml