

Data Path : Z:\pestpcbsrv\HPCHEM1\FID\_G\Data\FG071723AL\  
 Data File : FG012418.D  
 Signal(s) : FID1A.ch  
 Acq On : 17 Jul 2023 22:23  
 Operator : YP\AJ  
 Sample : I.BLK  
 Misc :  
 ALS Vial : 1 Sample Multiplier: 1

Instrument :  
 FID\_G  
 ClientSampleId :  
 I.BLK

Integration File: autoint1.e  
 Quant Time: Jul 18 05:54:43 2023  
 Quant Method : Z:\pestpcbsrv\HPCHEM1\FID\_G\Method\Aliphatic EPH 071423.M  
 Quant Title : GC Extractables  
 QLast Update : Sat Jul 15 01:18:50 2023  
 Response via : Initial Calibration  
 Integrator: ChemStation

Volume Inj. : 1 ul  
 Signal Phase : Rxi-1ms  
 Signal Info : 20M x 0.18mm x 0.18um

Compound	R.T.	Response	Conc Units
----------	------	----------	------------

-----  
 System Monitoring Compounds

Target Compounds  
 -----

(f)=RT Delta > 1/2 Window

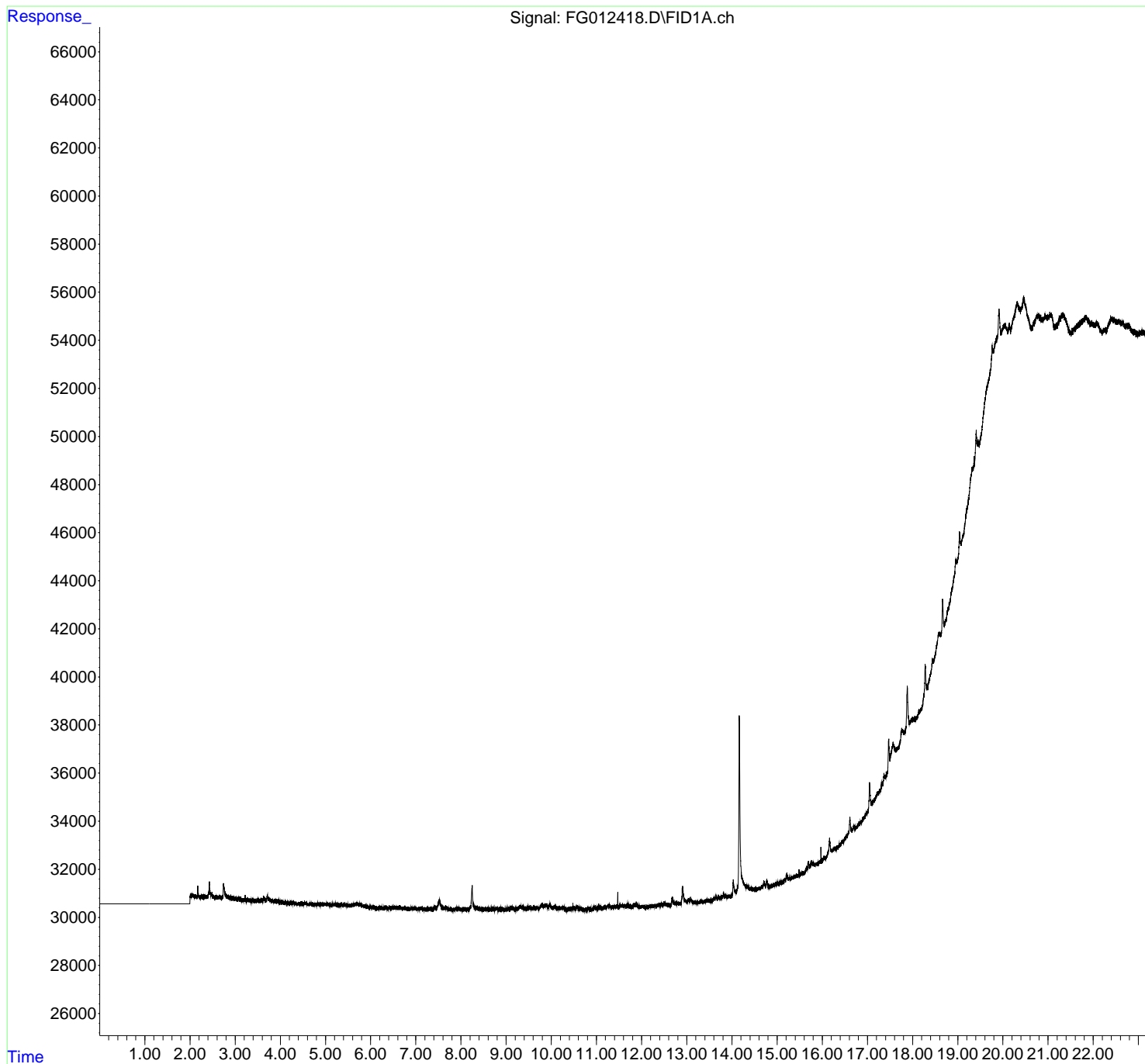
(m)=manual int.

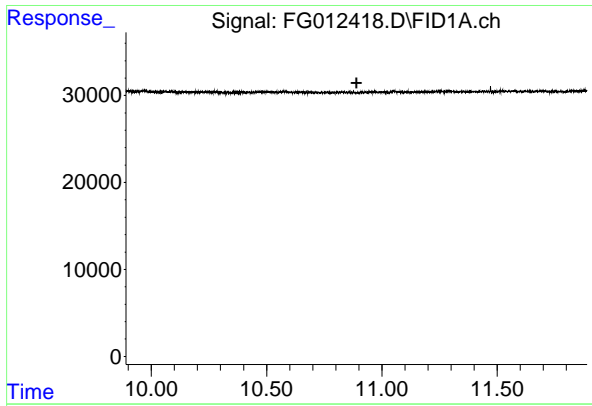
Data Path : Z:\pestpcbsrv\HPCHEM1\FID\_G\Data\FG071723AL\  
 Data File : FG012418.D  
 Signal(s) : FID1A.ch  
 Acq On : 17 Jul 2023 22:23  
 Operator : YP\AJ  
 Sample : I.BLK  
 Misc :  
 ALS Vial : 1 Sample Multiplier: 1

Instrument :  
 FID\_G  
 ClientSampleId :  
 I.BLK

Integration File: autoint1.e  
 Quant Time: Jul 18 05:54:43 2023  
 Quant Method : Z:\pestpcbsrv\HPCHEM1\FID\_G\Method\Aliphatic EPH 071423.M  
 Quant Title : GC Extractables  
 QLast Update : Sat Jul 15 01:18:50 2023  
 Response via : Initial Calibration  
 Integrator: ChemStation

Volume Inj. : 1 ul  
 Signal Phase : Rxi-1ms  
 Signal Info : 20M x 0.18mm x 0.18um

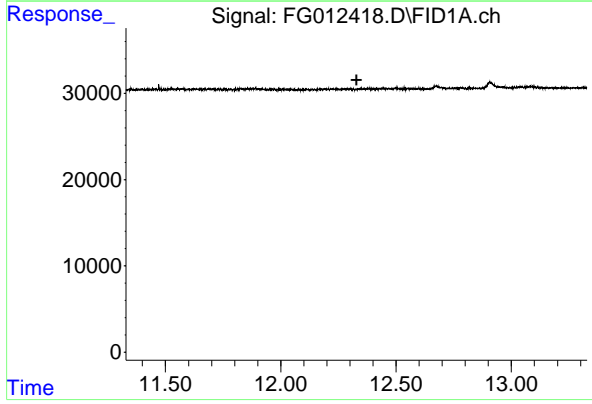




#9 ortho-Terphenyl (SURR)

R.T.: 0.000 min  
Exp R.T. : 10.890 min  
Response: 0  
Conc: N.D.

Instrument :  
FID\_G  
ClientSampleId :  
I.BLK



#12 1-chlorooctadecane (SURR)

R.T.: 0.000 min  
Exp R.T. : 12.328 min  
Response: 0  
Conc: N.D.