

Data Path : Z:\pestpcbsrv\HPCHEM1\FID_G\Data\FG072023AL\
 Data File : FG012494.D
 Signal(s) : FID1A.ch
 Acq On : 20 Jul 2023 09:38
 Operator : YP\AJ
 Sample : I.BLK
 Misc :
 ALS Vial : 1 Sample Multiplier: 1

Instrument :
 FID_G
 ClientSampleId :

Integration File: autoint1.e
 Quant Time: Jul 21 01:48:52 2023
 Quant Method : Z:\pestpcbsrv\HPCHEM1\FID_G\Method\Aliphatic EPH 071423.M
 Quant Title : GC Extractables
 QLast Update : Sat Jul 15 01:18:50 2023
 Response via : Initial Calibration
 Integrator: ChemStation

Volume Inj. : 1 ul
 Signal Phase : Rxi-1ms
 Signal Info : 20M x 0.18mm x 0.18um

Compound	R.T.	Response	Conc Units

System Monitoring Compounds			
Target Compounds			
14) T n-Tetracosane (C24)	14.155	127378	0.907 ug/ml
18) T n-Dotriacontane (C32)	17.887	19535	0.147 ug/ml
20) T n-Hexatriacontane (C36)	19.434	43040	0.348 ug/ml

(f)=RT Delta > 1/2 Window

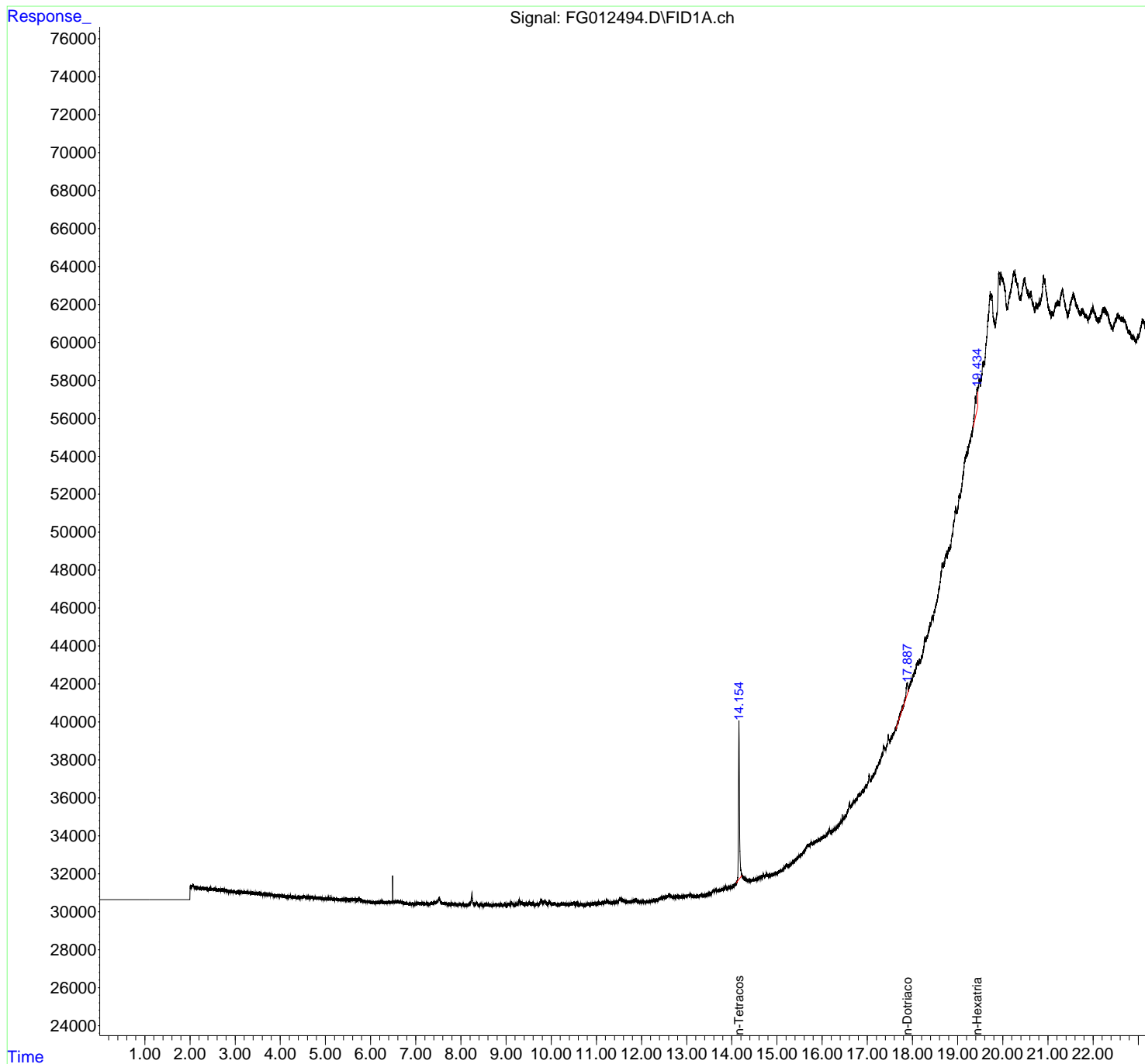
(m)=manual int.

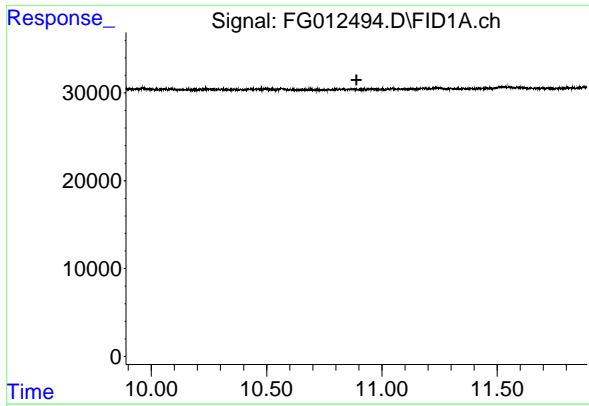
Data Path : Z:\pestpcbsrv\HPCHEM1\FID_G\Data\FG072023AL\
 Data File : FG012494.D
 Signal(s) : FID1A.ch
 Acq On : 20 Jul 2023 09:38
 Operator : YP\AJ
 Sample : I.BLK
 Misc :
 ALS Vial : 1 Sample Multiplier: 1

Instrument :
 FID_G
 ClientSampleId :

Integration File: autoint1.e
 Quant Time: Jul 21 01:48:52 2023
 Quant Method : Z:\pestpcbsrv\HPCHEM1\FID_G\Method\Aliphatic EPH 071423.M
 Quant Title : GC Extractables
 QLast Update : Sat Jul 15 01:18:50 2023
 Response via : Initial Calibration
 Integrator: ChemStation

Volume Inj. : 1 ul
 Signal Phase : Rxi-1ms
 Signal Info : 20M x 0.18mm x 0.18um

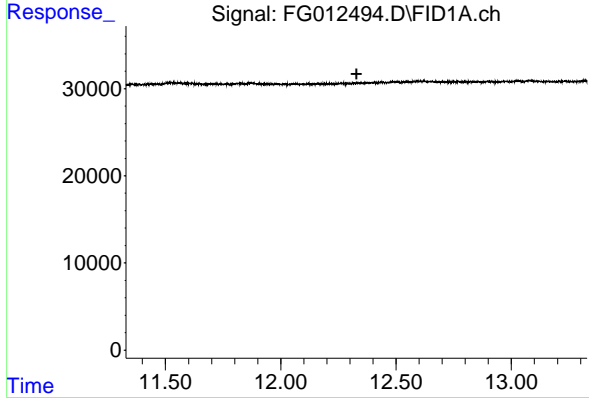




#9 ortho-Terphenyl (SURRE)

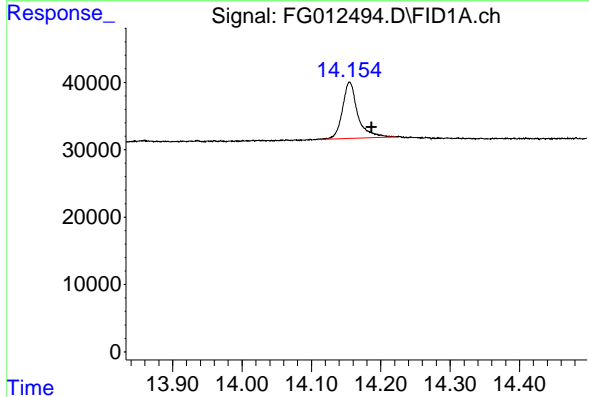
R.T.: 0.000 min
 Exp R.T.: 10.890 min
 Response: 0
 Conc: N.D.

Instrument : FID_G
 ClientSampleId :



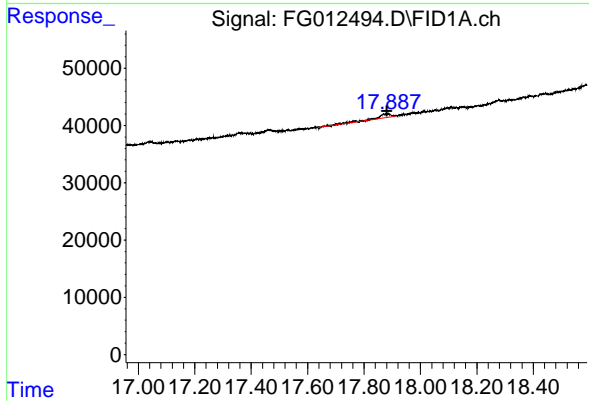
#12 1-chlorooctadecane (SURRE)

R.T.: 0.000 min
 Exp R.T.: 12.328 min
 Response: 0
 Conc: N.D.



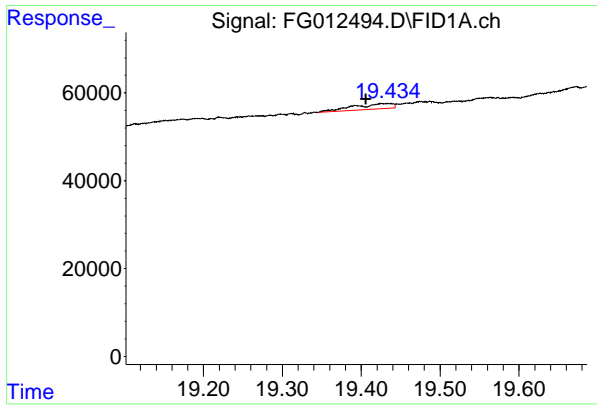
#14 n-Tetracosane (C24)

R.T.: 14.155 min
 Delta R.T.: -0.032 min
 Response: 127378
 Conc: 0.91 ug/ml



#18 n-Dotriacontane (C32)

R.T.: 17.887 min
 Delta R.T.: 0.006 min
 Response: 19535
 Conc: 0.15 ug/ml



#20 n-Hexatriacontane (C36)

R.T.: 19.434 min
Delta R.T.: 0.028 min
Response: 43040
Conc: 0.35 ug/ml

Instrument :

FID_G

ClientSampleId :