

Data Path : Z:\pestpcbsrv\HPCHEM1\FID_G\Data\FG072219\
 Data File : FG005484.D
 Signal(s) : FID1A.ch
 Acq On : 22 Jul 2019 14:36
 Operator : DD\AJ
 Sample : 50 PPM TRPH STD
 Misc :
 ALS Vial : 3 Sample Multiplier: 1

Integration File: autoint1.e
 Quant Time: Jul 23 00:54:02 2019
 Quant Method : Z:\pestpcbsrv\HPCHEM1\FID_G\Method\FG070819.M
 Quant Title :
 QLast Update : Tue Jul 09 08:00:47 2019
 Response via : Initial Calibration
 Integrator: ChemStation

Volume Inj. : 1uL
 Signal Phase : Rxi-1ms
 Signal Info : 20mx0.18mmx0.18um

Compound	R.T.	Response	Conc Units

System Monitoring Compounds			
9) S TETRACOSANE-d50 (SURR...	14.766	4850665	45.070 ug/ml
Target Compounds			
1) N-OCTANE	2.347	5752976	47.360 ug/ml
2) N-DECANE	4.464	6226019	50.289 ug/ml
3) N-DODECANE	6.493	6249279	49.585 ug/ml
4) N-TETRADECANE	8.295	6150170	48.718 ug/ml
5) N-HEXADECANE	9.902	6075493	47.816 ug/ml
6) N-OCTADECANE	11.348	5897978	47.060 ug/ml
7) N-EICOSANE	12.662	5816245	46.096 ug/ml
8) N-DOCOSANE	13.864	5645640	45.533 ug/ml
10) N-TETRACOSANE	14.970	5534963	45.222 ug/ml
11) N-HEXACOSANE	15.993	5447854	45.339 ug/ml
12) N-OCTACOSANE	16.947	5443971	45.460 ug/ml
13) N-TRIACONTANE	17.836	5535079	46.386 ug/ml
14) N-DOTRIACONTANE	18.672	5800419	50.128 ug/ml
15) N-TETRATRIACONTANE	19.457	6192859	56.411 ug/ml
16) N-HEXATRIACONTANE	20.203	6146039	58.205 ug/ml
17) N-OCTATRIACONTANE	20.964	5851653	62.224 ug/ml
18) N-TETRACONTANE	21.919	5934743	59.925 ug/ml

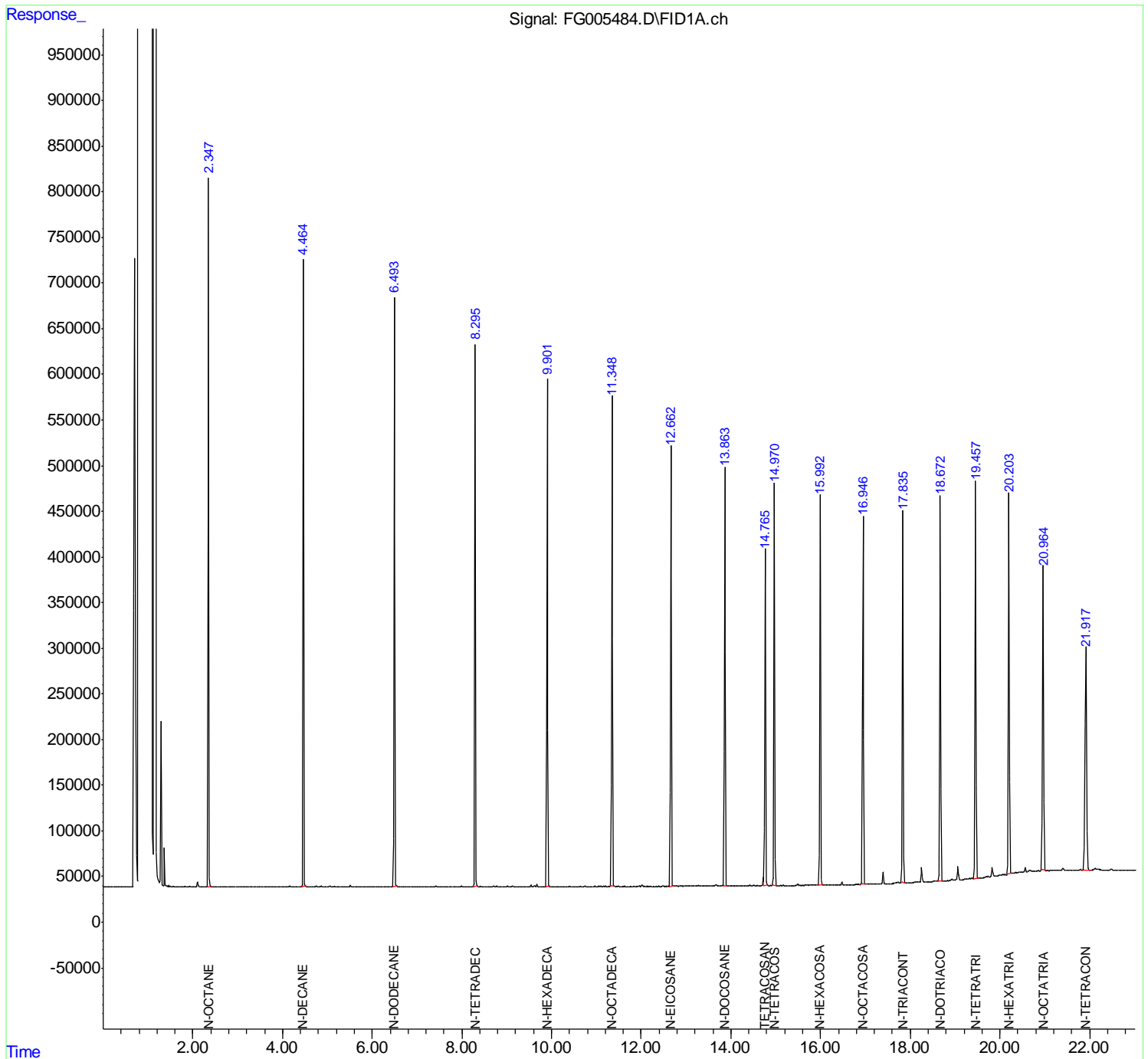
(f)=RT Delta > 1/2 Window

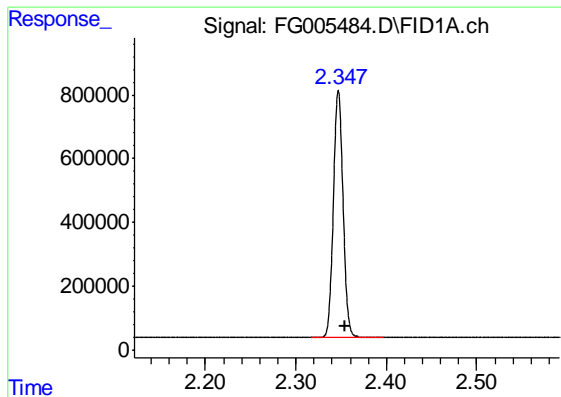
(m)=manual int.

Data Path : Z:\pestpcbsrv\HPCHEM1\FID_G\Data\FG072219\
Data File : FG005484.D
Signal(s) : FID1A.ch
Acq On : 22 Jul 2019 14:36
Operator : DD\AJ
Sample : 50 PPM TRPH STD
Misc :
ALS Vial : 3 Sample Multiplier: 1

Integration File: autoint1.e
Quant Time: Jul 23 00:54:02 2019
Quant Method : Z:\pestpcbsrv\HPCHEM1\FID_G\Method\FG070819.M
Quant Title :
QLast Update : Tue Jul 09 08:00:47 2019
Response via : Initial Calibration
Integrator: ChemStation

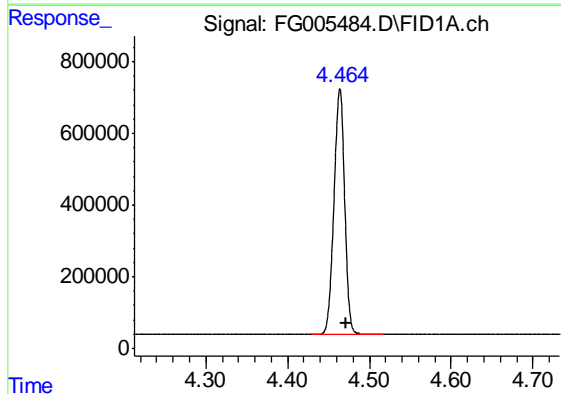
Volume Inj. : 1uL
Signal Phase : Rxi-1ms
Signal Info : 20mx0.18mmx0.18um





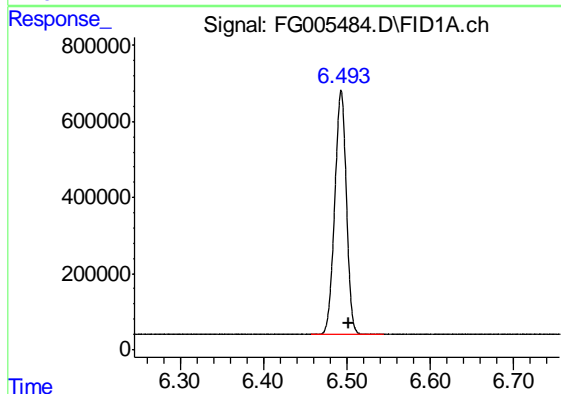
#1 N-OCTANE

R.T.: 2.347 min
Delta R.T.: -0.008 min
Response: 5752976
Conc: 47.36 ug/ml



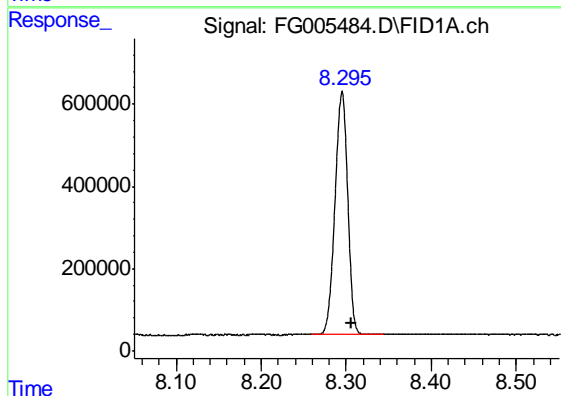
#2 N-DECANE

R.T.: 4.464 min
Delta R.T.: -0.008 min
Response: 6226019
Conc: 50.29 ug/ml



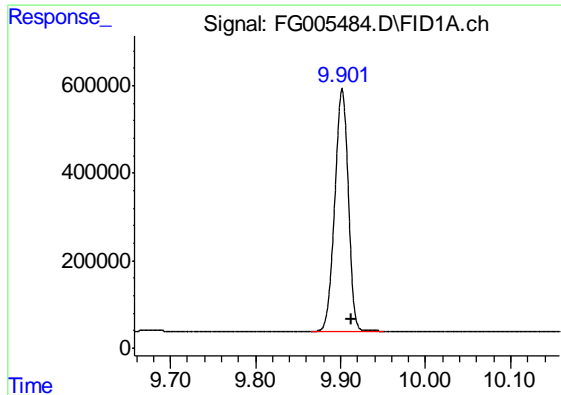
#3 N-DODECANE

R.T.: 6.493 min
Delta R.T.: -0.009 min
Response: 6249279
Conc: 49.59 ug/ml



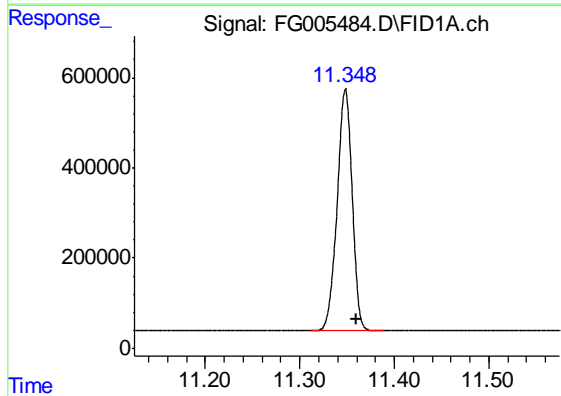
#4 N-TETRADECANE

R.T.: 8.295 min
Delta R.T.: -0.010 min
Response: 6150170
Conc: 48.72 ug/ml



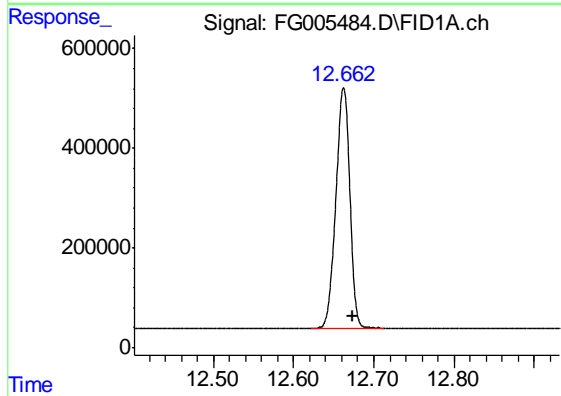
#5 N-HEXADECANE

R.T.: 9.902 min
Delta R.T.: -0.010 min
Response: 6075493
Conc: 47.82 ug/ml



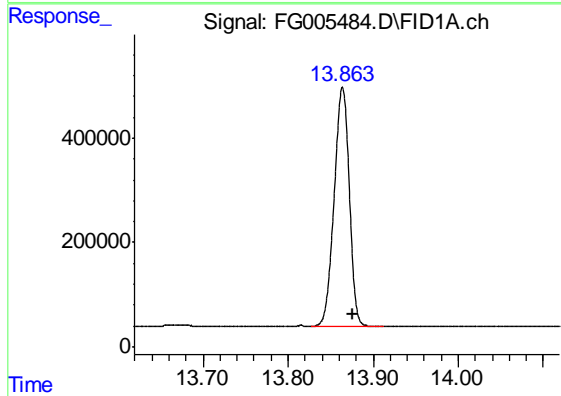
#6 N-OCTADECANE

R.T.: 11.348 min
Delta R.T.: -0.011 min
Response: 5897978
Conc: 47.06 ug/ml



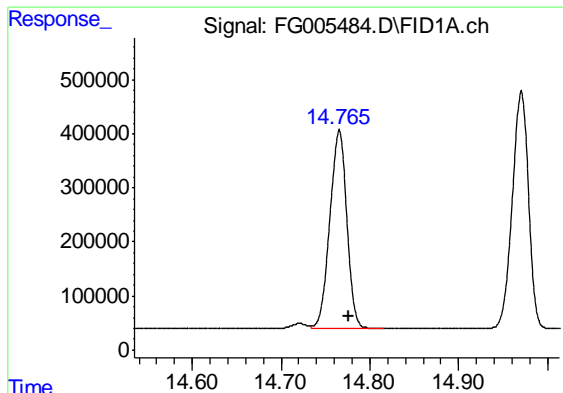
#7 N-EICOSANE

R.T.: 12.662 min
Delta R.T.: -0.011 min
Response: 5816245
Conc: 46.10 ug/ml



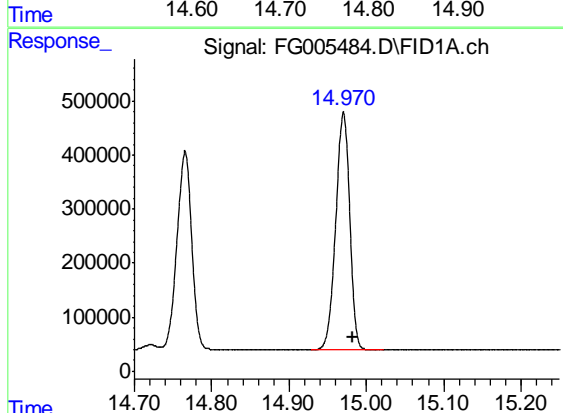
#8 N-DOCOSANE

R.T.: 13.864 min
Delta R.T.: -0.011 min
Response: 5645640
Conc: 45.53 ug/ml



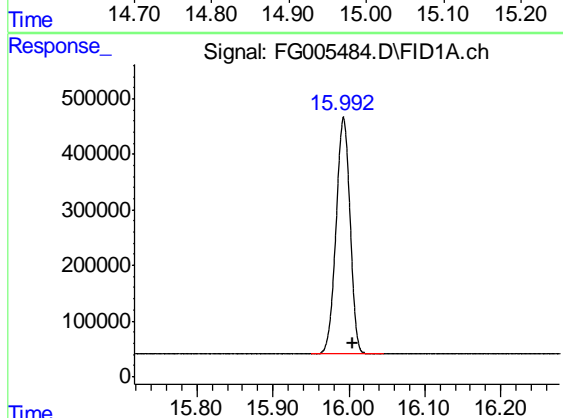
#9 TETRACOSANE-d50 (SURROGATE)

R.T.: 14.766 min
Delta R.T.: -0.010 min
Response: 4850665
Conc: 45.07 ug/ml



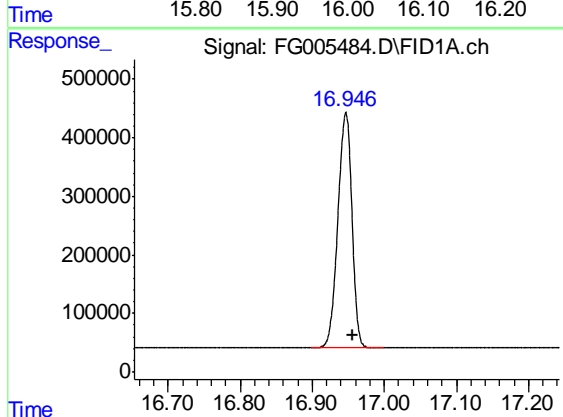
#10 N-TETRACOSANE

R.T.: 14.970 min
Delta R.T.: -0.012 min
Response: 5534963
Conc: 45.22 ug/ml



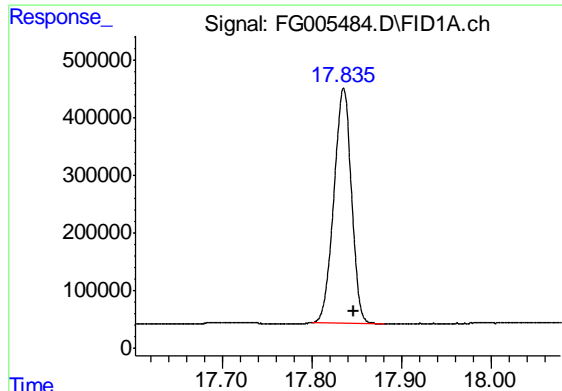
#11 N-HEXACOSANE

R.T.: 15.993 min
Delta R.T.: -0.011 min
Response: 5447854
Conc: 45.34 ug/ml



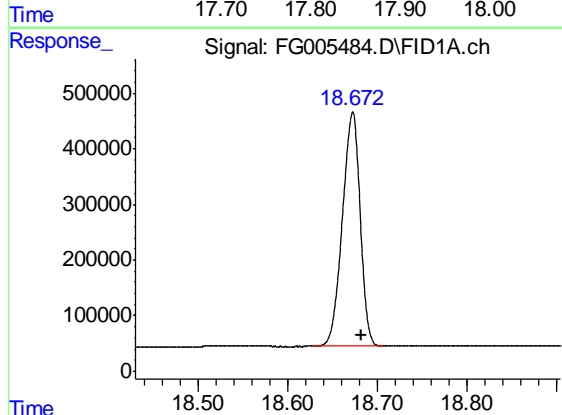
#12 N-OCTACOSANE

R.T.: 16.947 min
Delta R.T.: -0.010 min
Response: 5443971
Conc: 45.46 ug/ml



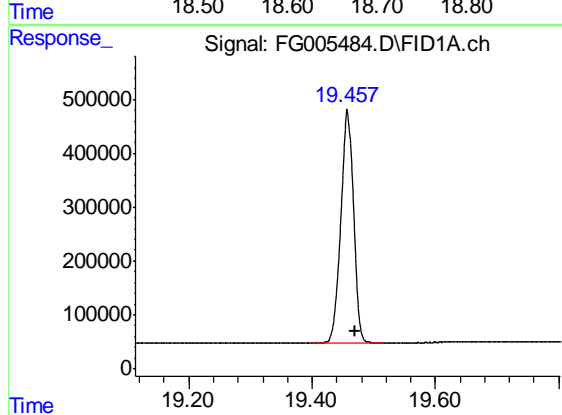
#13 N-TRIACONTANE

R.T.: 17.836 min
Delta R.T.: -0.011 min
Response: 5535079
Conc: 46.39 ug/ml



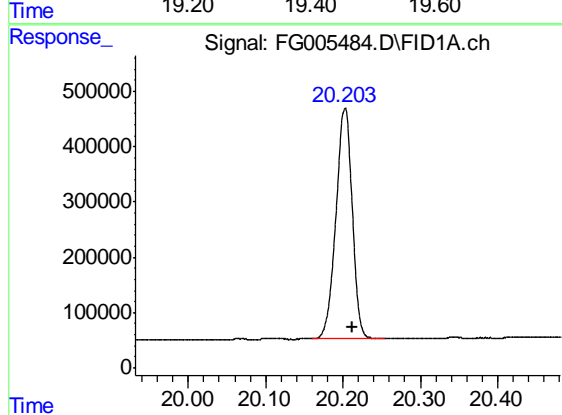
#14 N-DOTRIACONTANE

R.T.: 18.672 min
Delta R.T.: -0.010 min
Response: 5800419
Conc: 50.13 ug/ml m



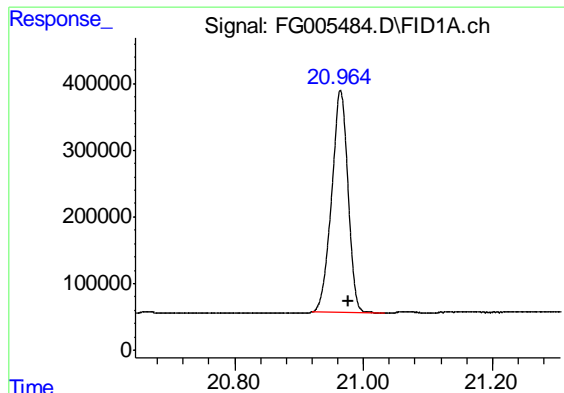
#15 N-TETRATRIACONTANE

R.T.: 19.457 min
Delta R.T.: -0.012 min
Response: 6192859
Conc: 56.41 ug/ml



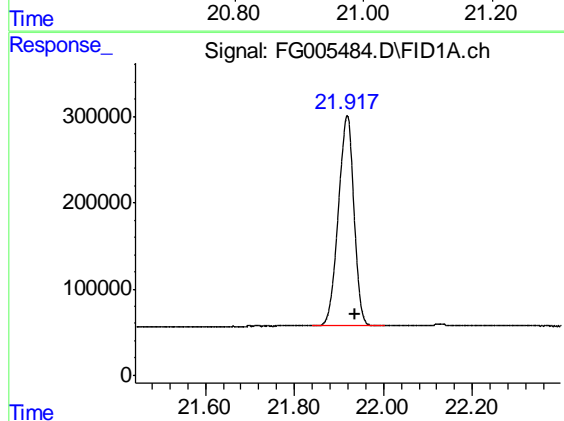
#16 N-HEXATRIACONTANE

R.T.: 20.203 min
Delta R.T.: -0.010 min
Response: 6146039
Conc: 58.20 ug/ml



#17 N-OCTATRIACONTANE

R.T.: 20.964 min
Delta R.T.: -0.012 min
Response: 5851653
Conc: 62.22 ug/ml



#18 N-TETRACONTANE

R.T.: 21.919 min
Delta R.T.: -0.017 min
Response: 5934743
Conc: 59.93 ug/ml