

Data Path : Z:\pestpcbsrv\HPCHEM1\FID_G\Data\FG081023AL\
 Data File : FG012671.D
 Signal(s) : FID1A.ch
 Acq On : 10 Aug 2023 17:11
 Operator : YP\AJ
 Sample : PB154616BL
 Misc :
 ALS Vial : 12 Sample Multiplier: 1

Instrument :
 FID_G
 ClientSampleId :

Integration File: autoint1.e
 Quant Time: Aug 10 23:13:30 2023
 Quant Method : Z:\pestpcbsrv\HPCHEM1\FID_G\Method\Aliphatic EPH 081023.M
 Quant Title : GC Extractables
 QLast Update : Thu Aug 10 15:32:13 2023
 Response via : Initial Calibration
 Integrator: ChemStation

Volume Inj. : 1 ul
 Signal Phase : Rxi-1ms
 Signal Info : 20M x 0.18mm x 0.18um

Compound	R.T.	Response	Conc Units

System Monitoring Compounds			
12) S 1-chlorooctadecane (S...	13.424	5147887	49.355 ug/ml
Spiked Amount	50.000	Recovery	= 98.71%

Target Compounds

(f)=RT Delta > 1/2 Window

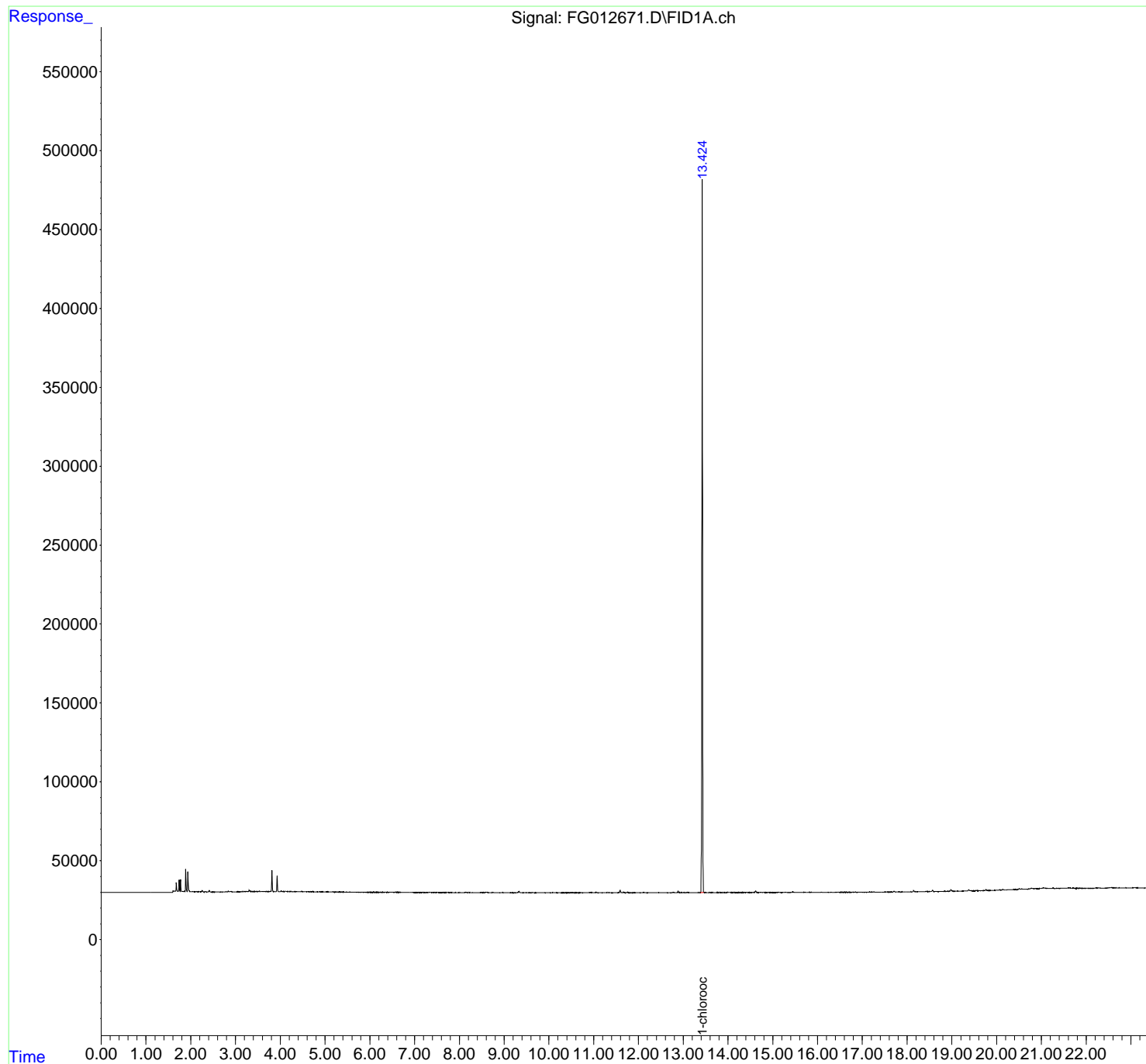
(m)=manual int.

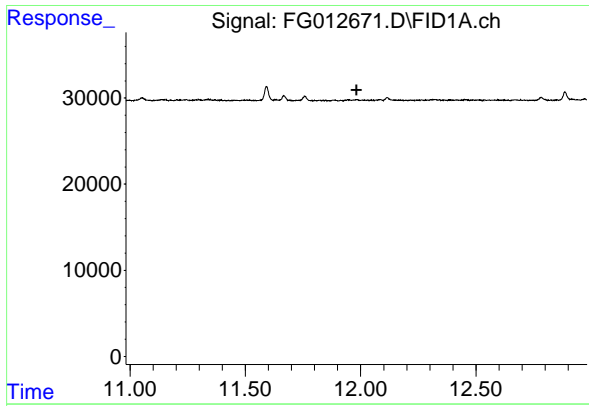
Data Path : Z:\pestpcbsrv\HPCHEM1\FID_G\Data\FG081023AL\
Data File : FG012671.D
Signal(s) : FID1A.ch
Acq On : 10 Aug 2023 17:11
Operator : YP\AJ
Sample : PB154616BL
Misc :
ALS Vial : 12 Sample Multiplier: 1

Instrument :
FID_G
ClientSampleId :

Integration File: autoint1.e
Quant Time: Aug 10 23:13:30 2023
Quant Method : Z:\pestpcbsrv\HPCHEM1\FID_G\Method\Aliphatic EPH 081023.M
Quant Title : GC Extractables
QLast Update : Thu Aug 10 15:32:13 2023
Response via : Initial Calibration
Integrator: ChemStation

Volume Inj. : 1 ul
Signal Phase : Rxi-1ms
Signal Info : 20M x 0.18mm x 0.18um

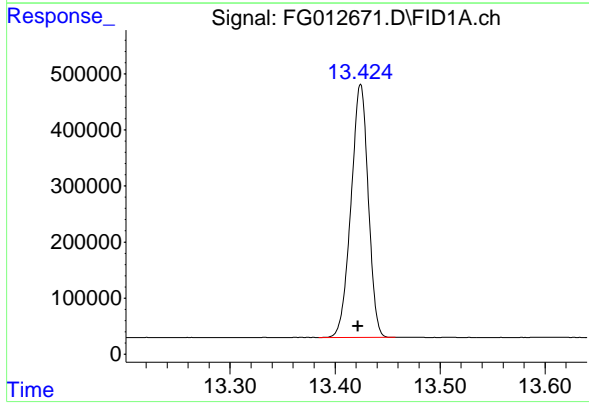




#9 ortho-Terphenyl (SURR)

R.T.: 0.000 min
Exp R.T.: 11.982 min
Response: 0
Conc: N.D.

Instrument : FID_G
ClientSampleId :



#12 1-chlorooctadecane (SURR)

R.T.: 13.424 min
Delta R.T.: 0.002 min
Response: 5147887
Conc: 49.36 ug/ml