

Data Path : Z:\pestpcbsrv\HPCHEM1\FID_G\Data\FG081318\
 Data File : FG002099.D
 Signal(s) : FID1A.ch
 Acq On : 13 Aug 2018 14:40
 Operator : AJ\SJ
 Sample : PB111965BS
 Misc :
 ALS Vial : 10 Sample Multiplier: 1

Integration File: autoint1.e
 Quant Time: Aug 14 02:36:01 2018
 Quant Method : Z:\pestpcbsrv\HPCHEM1\FID_G\Method\FG073018.M
 Quant Title :
 QLast Update : Mon Jul 30 13:56:56 2018
 Response via : Initial Calibration
 Integrator: ChemStation

Volume Inj. : 1uL
 Signal Phase : Rxi-1ms
 Signal Info : 20mx0.18mmx0.18um

Compound	R.T.	Response	Conc Units

System Monitoring Compounds			
9) S TETRACOSANE-d50 (SURR...	14.458	2138056	16.962 ug/ml
Target Compounds			
1) N-OCTANE	2.144	2589968	17.929 ug/ml
2) N-DECANE	4.212	3067698	20.815 ug/ml
3) N-DODECANE	6.224	3032914	20.189 ug/ml
4) N-TETRADECANE	8.015	3043277	20.007 ug/ml
5) N-HEXADECANE	9.613	2942924	19.321 ug/ml
6) N-OCTADECANE	11.052	2877568	18.760 ug/ml
7) N-EICOSANE	12.361	2798505	18.545 ug/ml
8) N-DOCOSANE	13.559	2720182	18.520 ug/ml
10) N-TETRACOSANE	14.661	2760856	19.256 ug/ml
11) N-HEXACOSANE	15.682	2576105	18.287 ug/ml
12) N-OCTACOSANE	16.632	2568882	18.413 ug/ml
13) N-TRIACONTANE	17.521	2550584	18.676 ug/ml
14) N-DOTRIACONTANE	18.353	2412126	19.477 ug/ml
15) N-TETRATRIACONTANE	19.140	1686049	15.507 ug/ml
16) N-HEXATRIACONTANE	19.881	840990	8.754 ug/ml
17) N-OCTATRIACONTANE	20.593	1518158	18.020 ug/ml
18) N-TETRACONTANE	21.426	479479	5.781 ug/ml

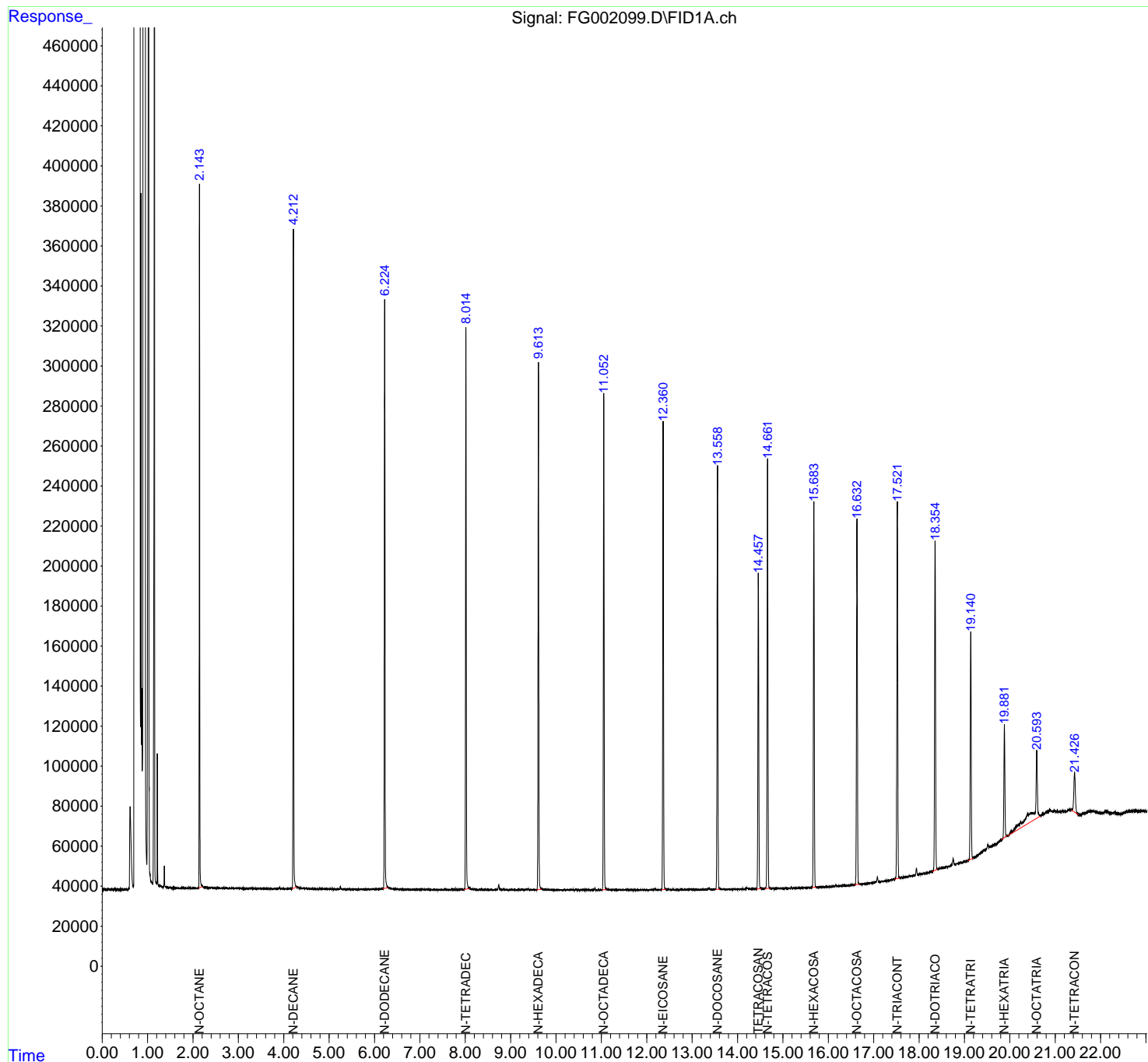
(f)=RT Delta > 1/2 Window

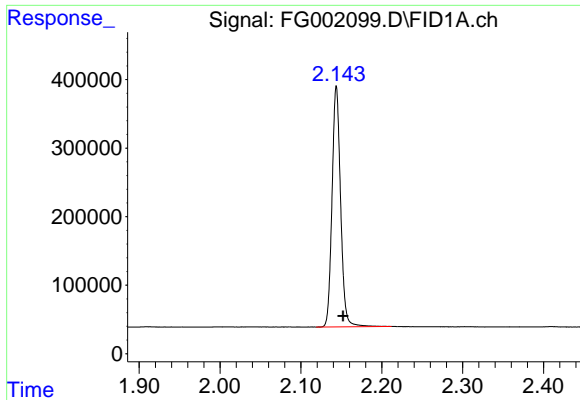
(m)=manual int.

Data Path : Z:\pestpcbsrv\HPCHEM1\FID_G\Data\FG081318\
 Data File : FG002099.D
 Signal(s) : FID1A.ch
 Acq On : 13 Aug 2018 14:40
 Operator : AJ\SJ
 Sample : PB111965BS
 Misc :
 ALS Vial : 10 Sample Multiplier: 1

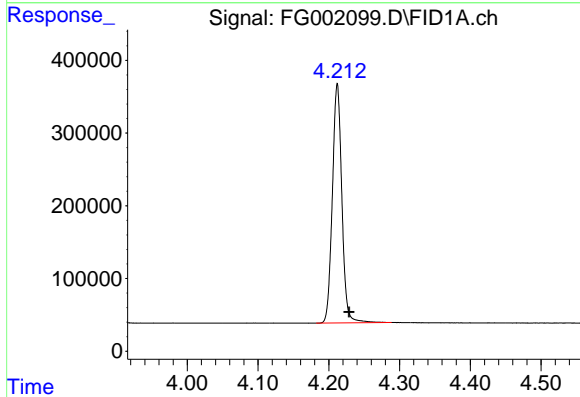
Integration File: autoint1.e
 Quant Time: Aug 14 02:36:01 2018
 Quant Method : Z:\pestpcbsrv\HPCHEM1\FID_G\Method\FG073018.M
 Quant Title :
 QLast Update : Mon Jul 30 13:56:56 2018
 Response via : Initial Calibration
 Integrator: ChemStation

Volume Inj. : 1uL
 Signal Phase : Rxi-1ms
 Signal Info : 20mx0.18mmx0.18um

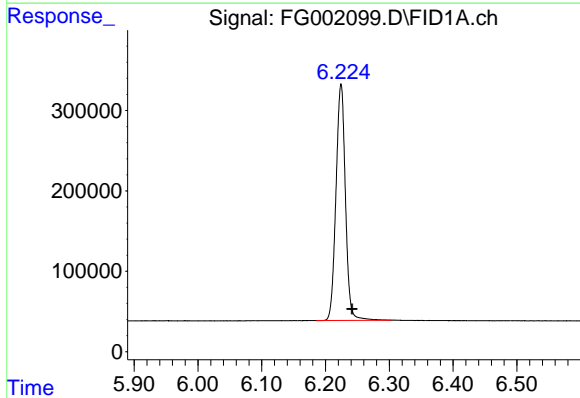




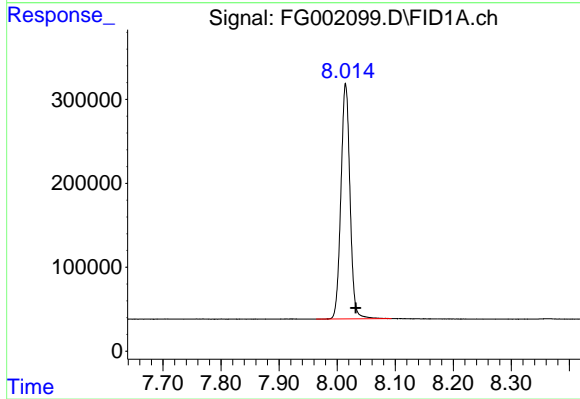
#1 N-OCTANE
R.T.: 2.144 min
Delta R.T.: -0.008 min
Response: 2589968
Conc: 17.93 ug/ml



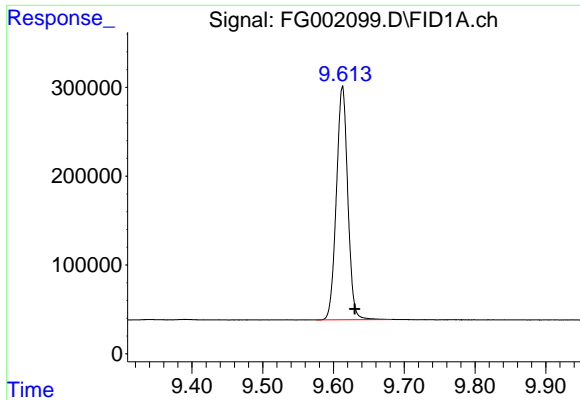
#2 N-DECANE
R.T.: 4.212 min
Delta R.T.: -0.016 min
Response: 3067698
Conc: 20.82 ug/ml



#3 N-DODECANE
R.T.: 6.224 min
Delta R.T.: -0.017 min
Response: 3032914
Conc: 20.19 ug/ml

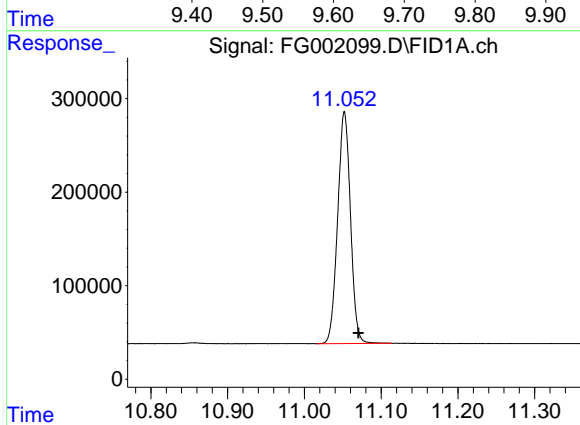


#4 N-TETRADECANE
R.T.: 8.015 min
Delta R.T.: -0.018 min
Response: 3043277
Conc: 20.01 ug/ml



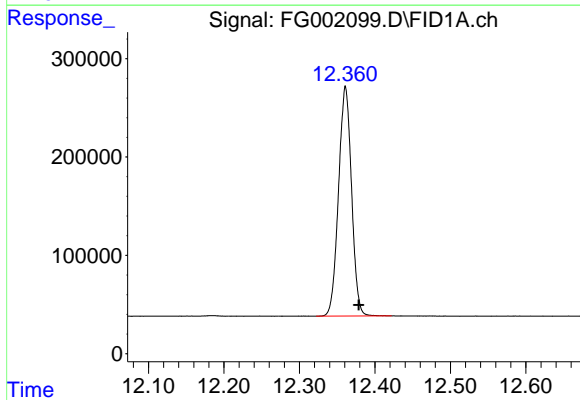
#5 N-HEXADECANE

R.T.: 9.613 min
Delta R.T.: -0.018 min
Response: 2942924
Conc: 19.32 ug/ml



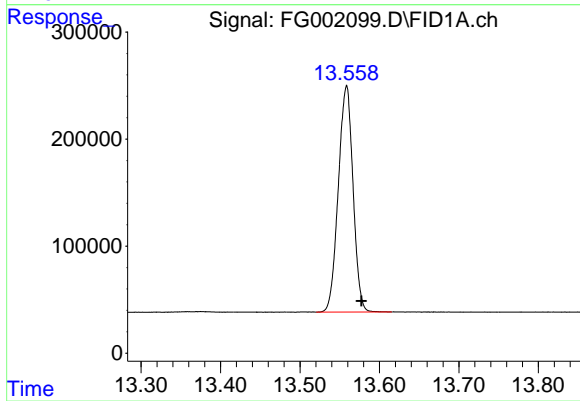
#6 N-OCTADECANE

R.T.: 11.052 min
Delta R.T.: -0.018 min
Response: 2877568
Conc: 18.76 ug/ml



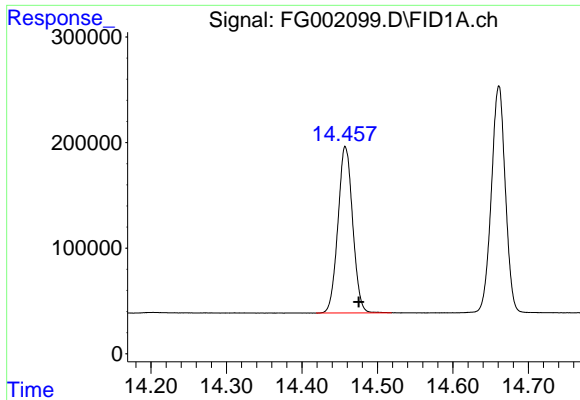
#7 N-EICOSANE

R.T.: 12.361 min
Delta R.T.: -0.017 min
Response: 2798505
Conc: 18.54 ug/ml



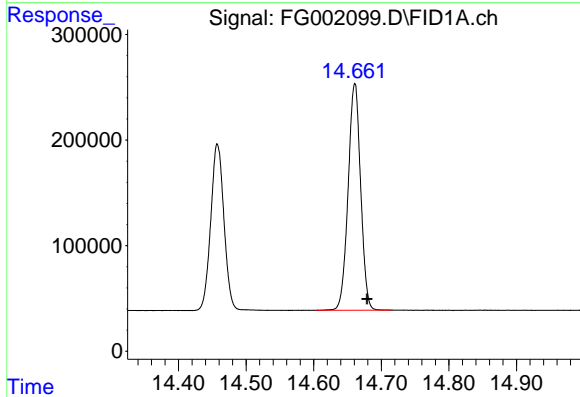
#8 N-DOCOSANE

R.T.: 13.559 min
Delta R.T.: -0.018 min
Response: 2720182
Conc: 18.52 ug/ml



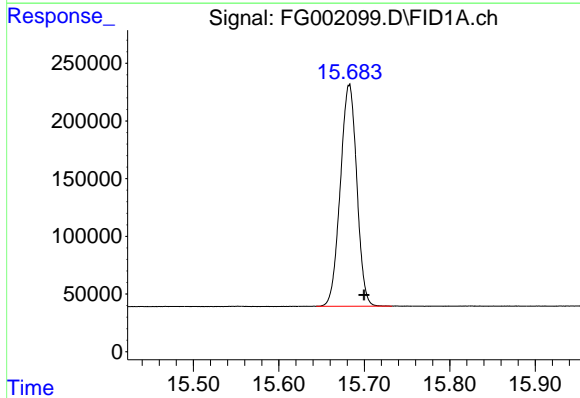
#9 TETRACOSANE-d50 (SURROGATE)

R.T.: 14.458 min
 Delta R.T.: -0.018 min
 Response: 2138056
 Conc: 16.96 ug/ml



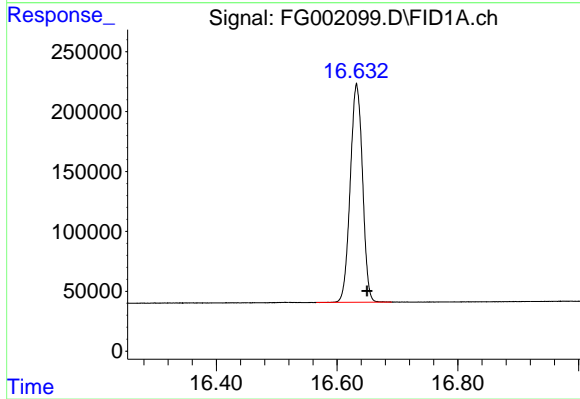
#10 N-TETRACOSANE

R.T.: 14.661 min
 Delta R.T.: -0.018 min
 Response: 2760856
 Conc: 19.26 ug/ml



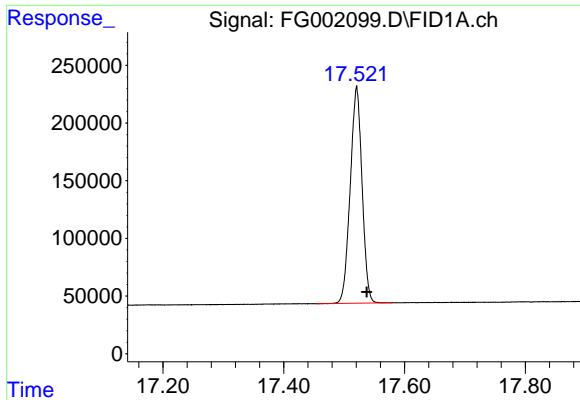
#11 N-HEXACOSANE

R.T.: 15.682 min
 Delta R.T.: -0.017 min
 Response: 2576105
 Conc: 18.29 ug/ml



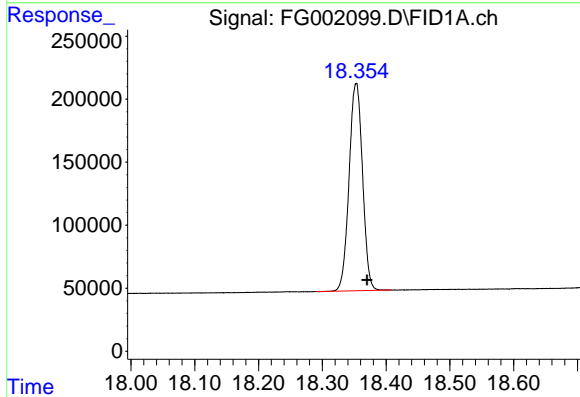
#12 N-OCTACOSANE

R.T.: 16.632 min
 Delta R.T.: -0.017 min
 Response: 2568882
 Conc: 18.41 ug/ml



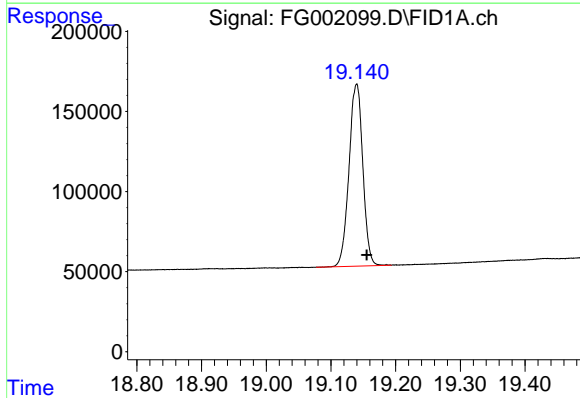
#13 N-TRIACONTANE

R.T.: 17.521 min
Delta R.T.: -0.017 min
Response: 2550584
Conc: 18.68 ug/ml



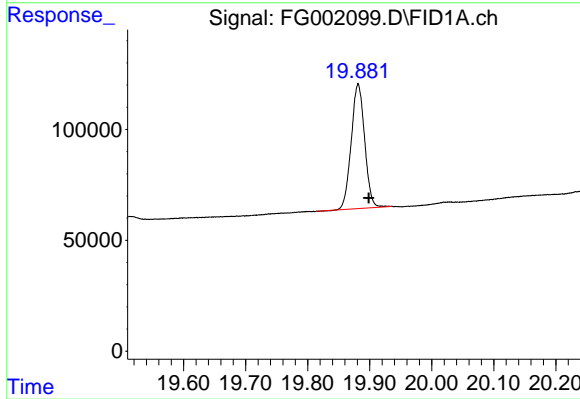
#14 N-DOTRIACONTANE

R.T.: 18.353 min
Delta R.T.: -0.017 min
Response: 2412126
Conc: 19.48 ug/ml



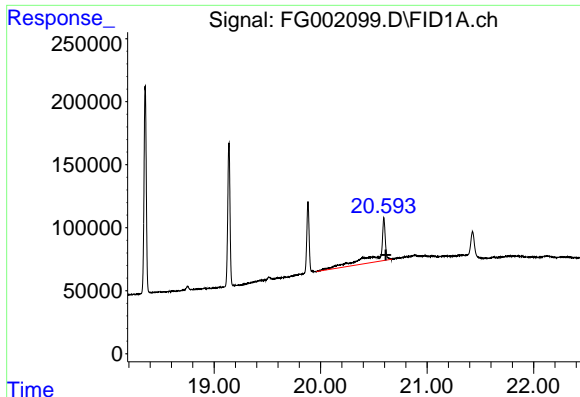
#15 N-TETRATRIACONTANE

R.T.: 19.140 min
Delta R.T.: -0.015 min
Response: 1686049
Conc: 15.51 ug/ml



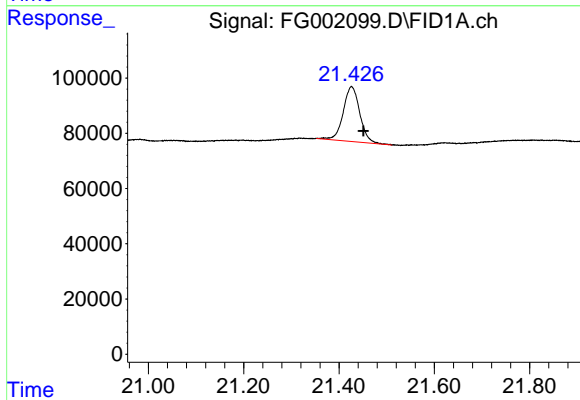
#16 N-HEXATRIACONTANE

R.T.: 19.881 min
Delta R.T.: -0.017 min
Response: 840990
Conc: 8.75 ug/ml



#17 N-OCTATRIACONTANE

R.T.: 20.593 min
Delta R.T.: -0.019 min
Response: 1518158
Conc: 18.02 ug/ml



#18 N-TETRACONTANE

R.T.: 21.426 min
Delta R.T.: -0.025 min
Response: 479479
Conc: 5.78 ug/ml