

Data Path : Z:\pestpcbsrv\HPCHEM1\FID_G\Data\FG090424AR\
 Data File : FG014164.D
 Signal(s) : FID1A.ch
 Acq On : 04 Sep 2024 08:44
 Operator : YP\AJ
 Sample : 100 PPM AROMATIC HC STD1
 Misc :
 ALS Vial : 70 Sample Multiplier: 1

Instrument :
 FID_G
ClientSampleId :
 100 PPM AROMATIC HC STD1

Integration File: autoint1.e
 Quant Time: Sep 04 11:08:30 2024
 Quant Method : Z:\pestpcbsrv\HPCHEM1\FID_G\Method\Aromatic EPH 090424.M
 Quant Title : GC Extractables
 QLast Update : Wed Sep 04 11:06:02 2024
 Response via : Initial Calibration
 Integrator: ChemStation

Volume Inj. : 1 µl
 Signal Phase : Rxi-1ms
 Signal Info : 20M x 0.18mm x 0.18µm

Compound	R.T.	Response	Conc Units

System Monitoring Compounds			
4) S 2-Bromonaphthalene (S...	7.896	11173576	98.924 ug/ml
Spiked Amount 50.000		Recovery =	197.85%
6) S 2-Fluorobiphenyl (SURR)	8.773	7649988	101.044 ug/ml
Spiked Amount 50.000 Range 0 - 131		Recovery =	202.09%#
11) S ortho-Terphenyl (SURR)	11.843	12987496	98.719 ug/ml
Spiked Amount 50.000		Recovery =	197.44%
Target Compounds			
1) T 1,2,3-Trimethylbenzen...	4.496	12413179	98.364 ug/ml
2) T Naphthalene (C11.7)	6.168	13092577	99.924 ug/ml
3) T 2-Methylnaphthalene (...)	7.269	13211483	102.208 ug/ml
5) T Acenaphthylene (C15.06)	8.573	13006849	99.591 ug/ml
7) T Acenaphthene (C15.5)	8.875	13047368	97.823 ug/ml
8) T Fluorene (C16.55)	9.666	12876051	99.017 ug/ml
9) T Phenanthrene (C19.36)	11.075	12794730	102.167 ug/ml
10) T Anthracene (C19.43)	11.153	12555924	96.471 ug/ml
12) T Fluoranthene (C21.85)	12.903	12760797	98.745 ug/ml
13) T Pyrene (C20.8)	13.203	12511339	97.550 ug/ml
14) T Benzo[a]anthracene (C...	15.090	12101373	101.830 ug/ml
15) T Chrysene (C27.41)	15.137	12340187	94.998 ug/ml
16) T benzo[b]fluoranthene ...	16.656	12316673	101.821 ug/ml
17) T Bnezo[k]fluoranthene ...	16.695	11385925	95.408 ug/ml
18) T Benzo[a]pyrene (C31.34)	17.041	11954144	98.114 ug/ml
19) T Indeno[1,2,3-cd]pyren...	18.422	12298583	111.532 ug/ml
20) T Dibenz[a,h]anthracene...	18.460	11739401	88.480 ug/ml
21) T Benzo[g,h,i]perylene ...	18.683	12726023	97.850 ug/ml

(f)=RT Delta > 1/2 Window

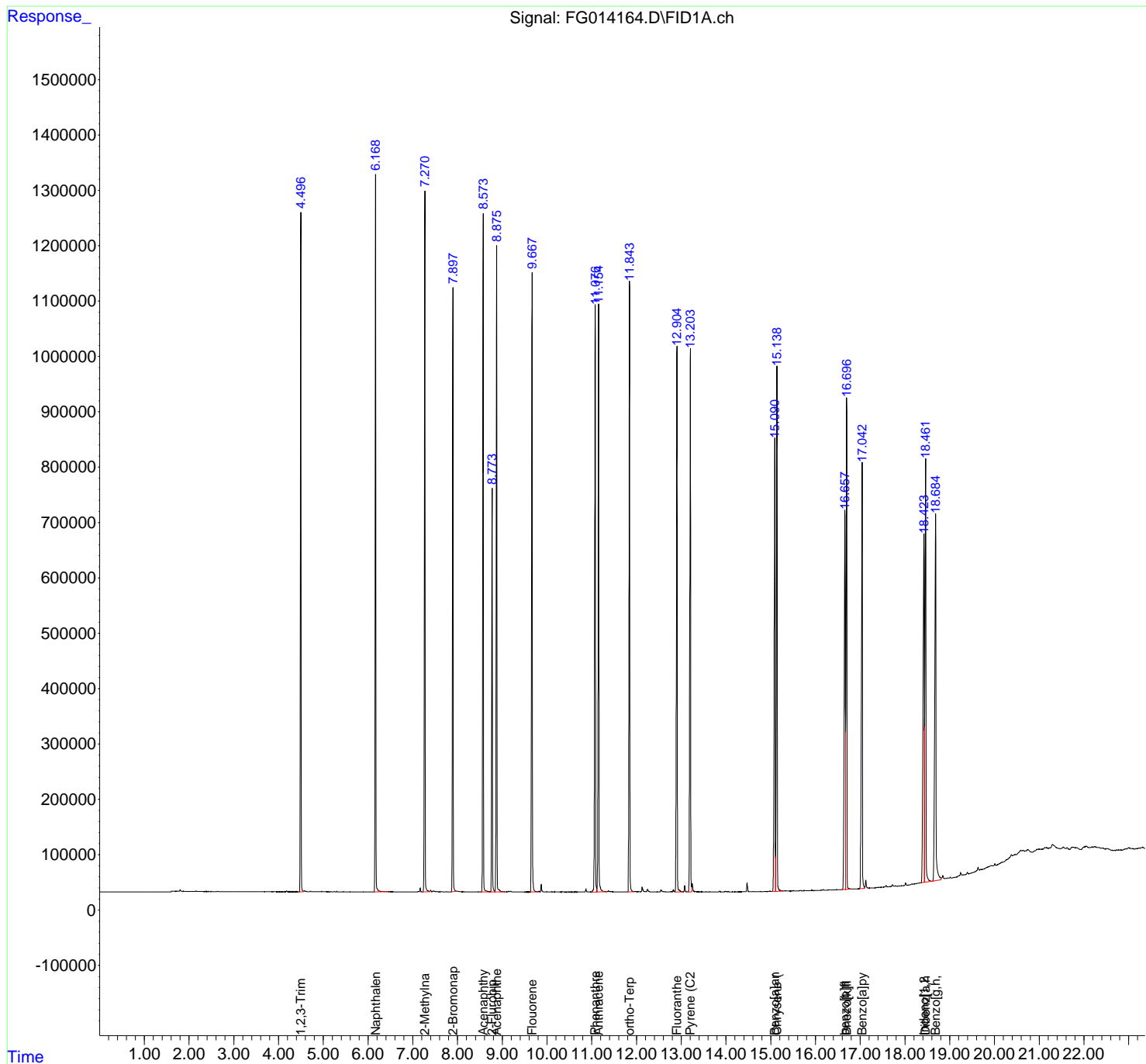
(m)=manual int.

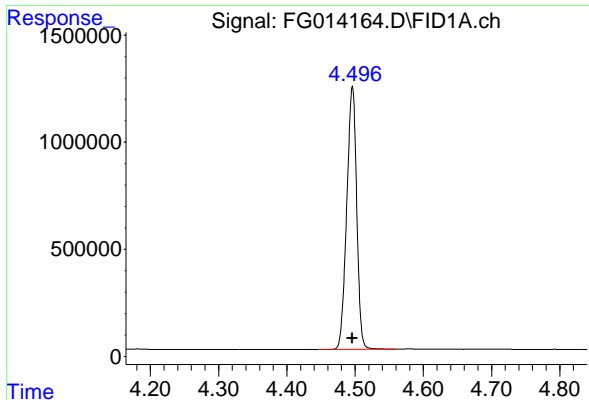
Data Path : Z:\pestpcbsrv\HPCHEM1\FID_G\Data\FG090424AR\
 Data File : FG014164.D
 Signal(s) : FID1A.ch
 Acq On : 04 Sep 2024 08:44
 Operator : YP\AJ
 Sample : 100 PPM AROMATIC HC STD1
 Misc :
 ALS Vial : 70 Sample Multiplier: 1

Instrument :
 FID_G
 ClientSampleId :
 100 PPM AROMATIC HC STD1

Integration File: autoint1.e
 Quant Time: Sep 04 11:08:30 2024
 Quant Method : Z:\pestpcbsrv\HPCHEM1\FID_G\Method\Aromatic EPH 090424.M
 Quant Title : GC Extractables
 QLast Update : Wed Sep 04 11:06:02 2024
 Response via : Initial Calibration
 Integrator: ChemStation

Volume Inj. : 1 µl
 Signal Phase : Rxi-1ms
 Signal Info : 20M x 0.18mm x 0.18µm

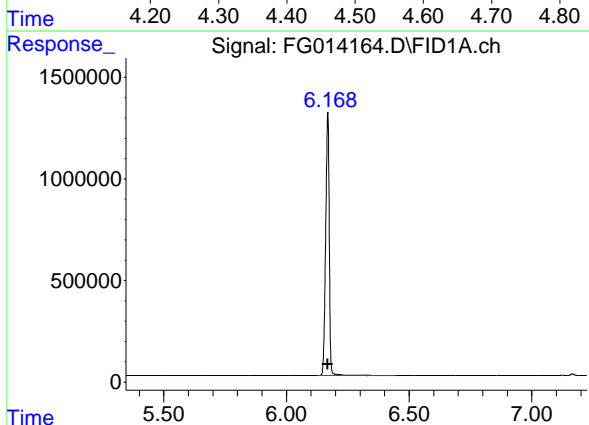




#1 1,2,3-Trimethylbenzene (C10.1)

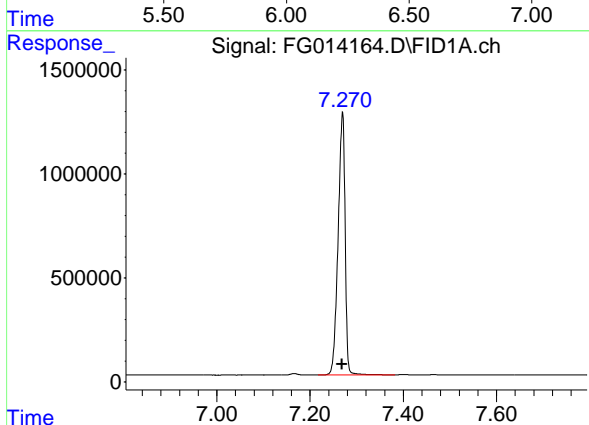
R.T.: 4.496 min
Delta R.T.: 0.000 min
Response: 12413179
Conc: 98.36 ug/ml

Instrument : FID_G
ClientSampleId : 100 PPM AROMATIC HC STD1



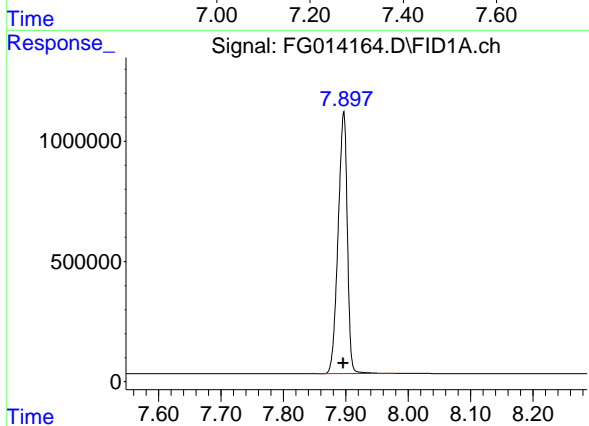
#2 Naphthalene (C11.7)

R.T.: 6.168 min
Delta R.T.: 0.000 min
Response: 13092577
Conc: 99.92 ug/ml



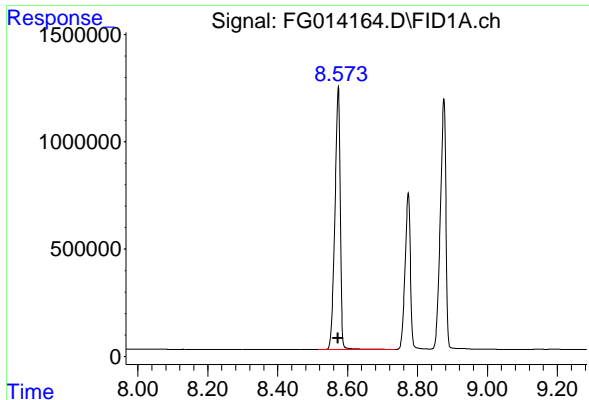
#3 2-Methylnaphthalene (C12.89)

R.T.: 7.269 min
Delta R.T.: 0.000 min
Response: 13211483
Conc: 102.21 ug/ml



#4 2-Bromonaphthalene (SURR)

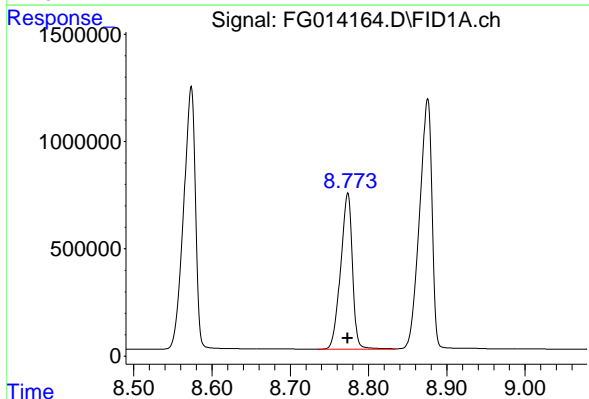
R.T.: 7.896 min
Delta R.T.: 0.000 min
Response: 11173576
Conc: 98.92 ug/ml



#5 Acenaphthylene (C15.06)

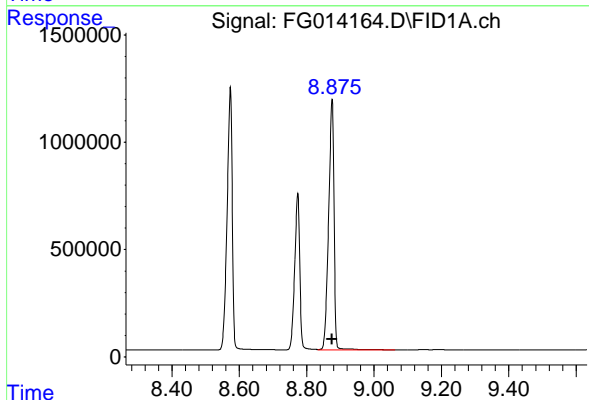
R.T.: 8.573 min
 Delta R.T.: 0.000 min
 Response: 13006849
 Conc: 99.59 ug/ml

Instrument : FID_G
 ClientSampleId : 100 PPM AROMATIC HC STD1



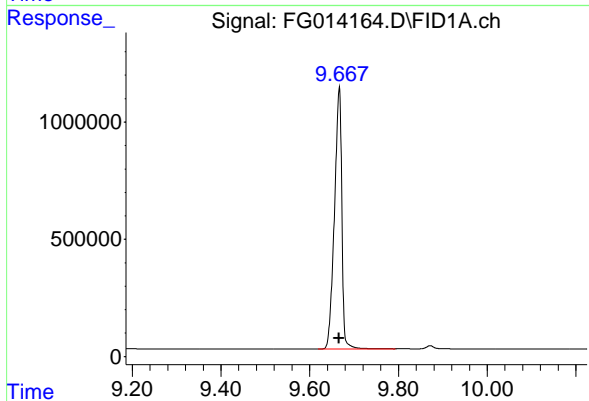
#6 2-Fluorobiphenyl (SURR)

R.T.: 8.773 min
 Delta R.T.: 0.000 min
 Response: 7649988
 Conc: 101.04 ug/ml



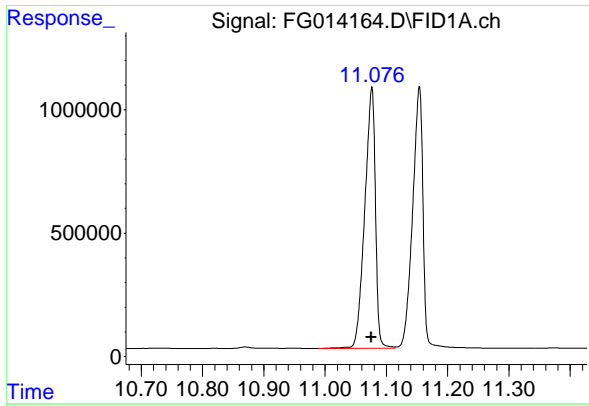
#7 Acenaphthene (C15.5)

R.T.: 8.875 min
 Delta R.T.: 0.000 min
 Response: 13047368
 Conc: 97.82 ug/ml



#8 Fluorene (C16.55)

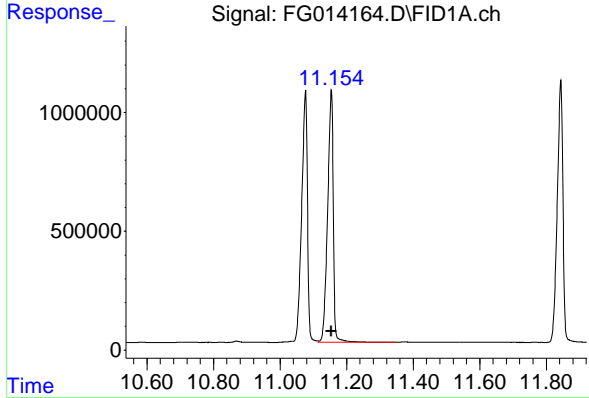
R.T.: 9.666 min
 Delta R.T.: 0.000 min
 Response: 12876051
 Conc: 99.02 ug/ml



#9 Phenanthrene (C19.36)

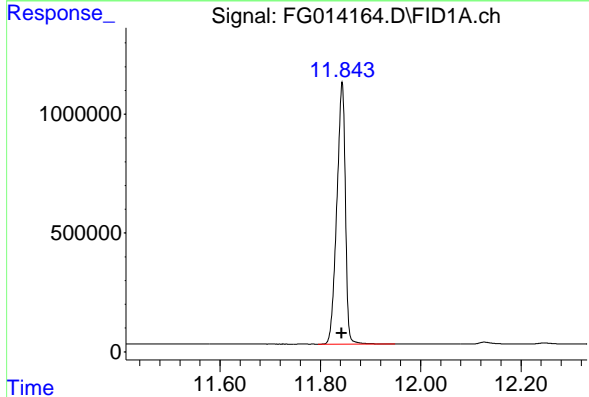
R.T.: 11.075 min
 Delta R.T.: 0.000 min
 Response: 12794730
 Conc: 102.17 ug/ml

Instrument : FID_G
 ClientSampleId : 100 PPM AROMATIC HC STD1



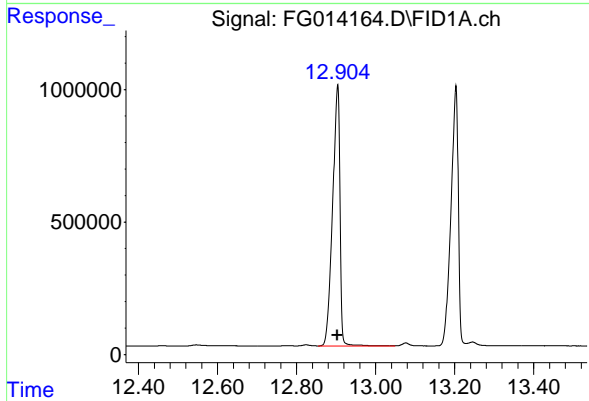
#10 Anthracene (C19.43)

R.T.: 11.153 min
 Delta R.T.: 0.000 min
 Response: 12555924
 Conc: 96.47 ug/ml



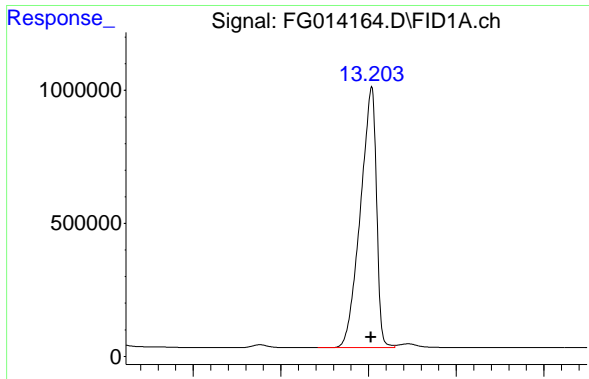
#11 ortho-Terphenyl (SURR)

R.T.: 11.843 min
 Delta R.T.: 0.000 min
 Response: 12987496
 Conc: 98.72 ug/ml



#12 Fluoranthene (C21.85)

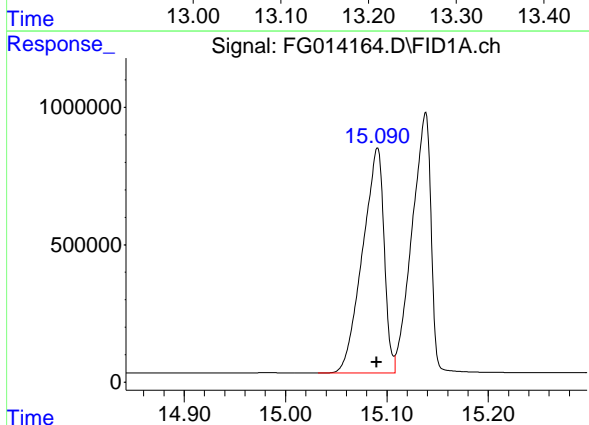
R.T.: 12.903 min
 Delta R.T.: 0.000 min
 Response: 12760797
 Conc: 98.74 ug/ml



#13 Pyrene (C20.8)

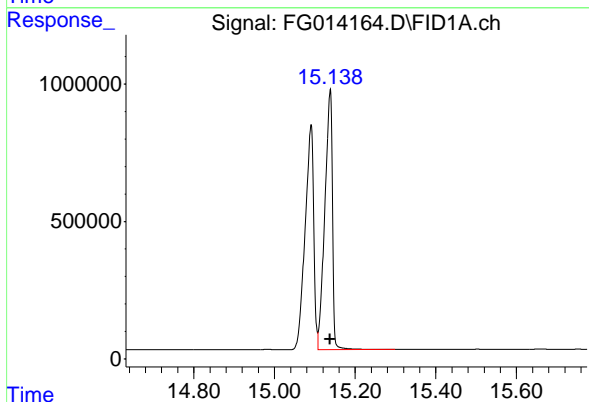
R.T.: 13.203 min
 Delta R.T.: 0.000 min
 Response: 12511339
 Conc: 97.55 ug/ml

Instrument : FID_G
 ClientSampleId : 100 PPM AROMATIC HC STD1



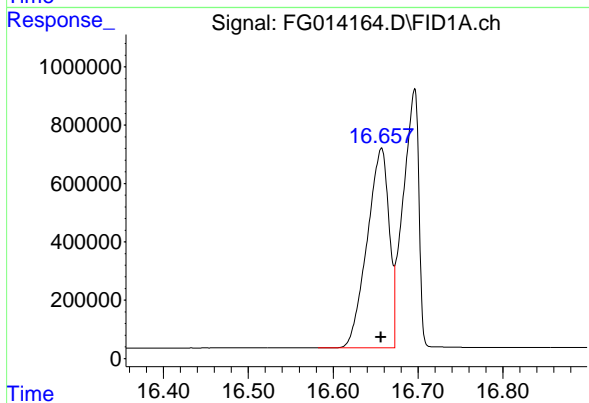
#14 Benzo[a]anthracene (C26.37)

R.T.: 15.090 min
 Delta R.T.: 0.000 min
 Response: 12101373
 Conc: 101.83 ug/ml



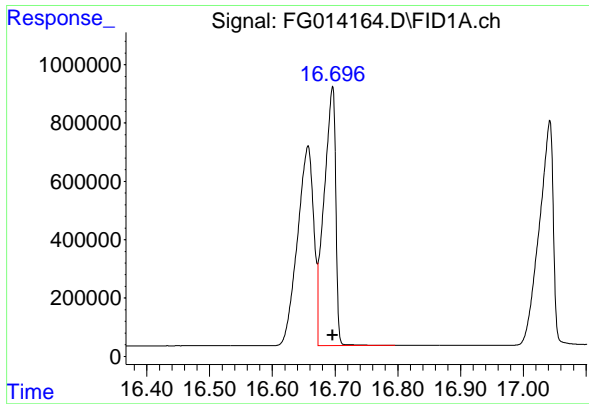
#15 Chrysene (C27.41)

R.T.: 15.137 min
 Delta R.T.: 0.000 min
 Response: 12340187
 Conc: 95.00 ug/ml



#16 benzo[b]fluoranthene (C30.41)

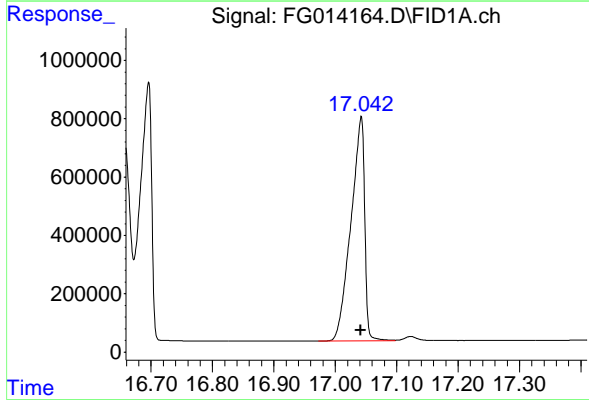
R.T.: 16.656 min
 Delta R.T.: 0.000 min
 Response: 12316673
 Conc: 101.82 ug/ml



#17 Bnezo[k]fluoranthene (C30.14)

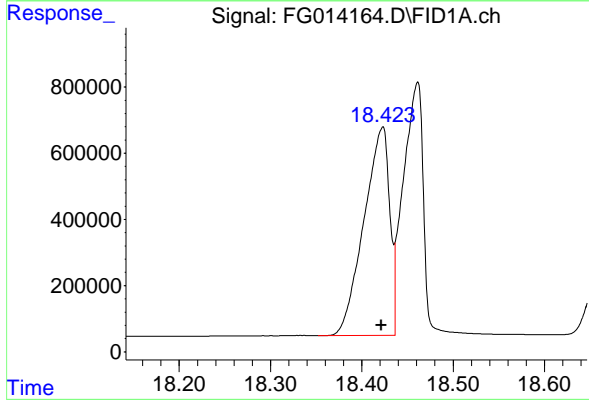
R.T.: 16.695 min
Delta R.T.: -0.001 min
Response: 11385925
Conc: 95.41 ug/ml

Instrument :
FID_G
ClientSampleId :
100 PPM AROMATIC HC STD1



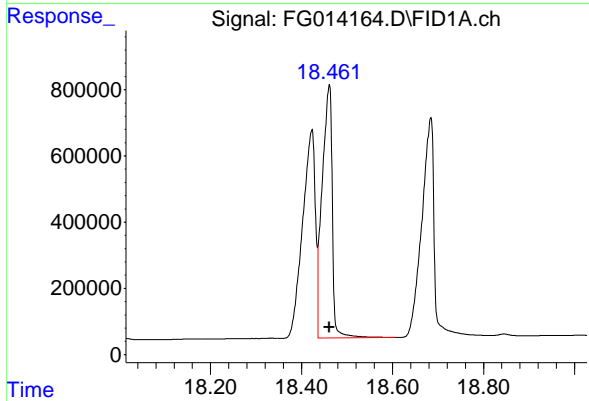
#18 Benzo[a]pyrene (C31.34)

R.T.: 17.041 min
Delta R.T.: 0.000 min
Response: 11954144
Conc: 98.11 ug/ml



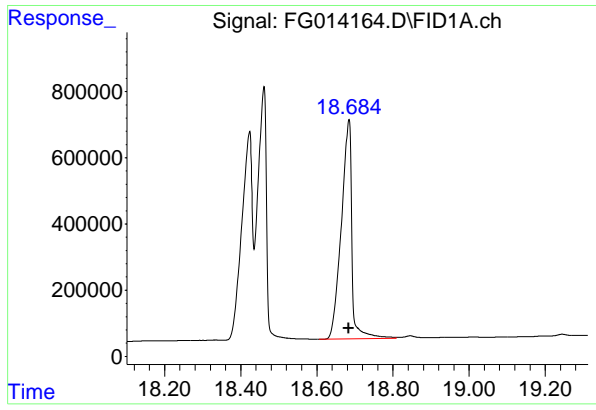
#19 Indeno[1,2,3-cd]pyrene (C35.01)

R.T.: 18.422 min
Delta R.T.: 0.000 min
Response: 12298583
Conc: 111.53 ug/ml



#20 Dibenz[a,h]anthracene (C30.36)

R.T.: 18.460 min
Delta R.T.: -0.001 min
Response: 11739401
Conc: 88.48 ug/ml



#21 Benzo[g,h,i]perylene (C34.01)

R.T.: 18.683 min
Delta R.T.: 0.000 min
Response: 12726023
Conc: 97.85 ug/ml

Instrument : FID_G
ClientSampleId : 100 PPM AROMATIC HC STD1