

Data Path : Z:\pestpcbsrv\HPCHEM1\FID_G\Data\FG092324AR\
 Data File : FG014330.D
 Signal(s) : FID1A.ch
 Acq On : 23 Sep 2024 10:15
 Operator : YP\AJ
 Sample : 20 PPM AROMATIC HC STD
 Misc :
 ALS Vial : 11 Sample Multiplier: 1

Instrument :
 FID_G
ClientSampleId :
 20 PPM AROMATIC HC STD

Manual Integrations
APPROVED

Reviewed By :Yogesh Patel 09/24/2024
 Supervised By :Ankita Jodhani 09/24/2024

Integration File: autoint1.e
 Quant Time: Sep 24 01:30:13 2024
 Quant Method : Z:\pestpcbsrv\HPCHEM1\FID_G\Method\Aromatic EPH 090424.M
 Quant Title : GC Extractables
 QLast Update : Wed Sep 04 11:28:29 2024
 Response via : Initial Calibration
 Integrator: ChemStation

Volume Inj. : 1 µl
 Signal Phase : Rxi-1ms
 Signal Info : 20M x 0.18mm x 0.18µm

Compound	R.T.	Response	Conc Units

System Monitoring Compounds			
4) S 2-Bromonaphthalene (S...	7.870	2308939	20.638 ug/ml
Spiked Amount 50.000		Recovery =	41.28%
6) S 2-Fluorobiphenyl (SURR)	8.744	1473663	20.241 ug/ml
Spiked Amount 50.000 Range 0 - 131		Recovery =	40.48%
11) S ortho-Terphenyl (SURR)	11.808	2734964	20.290 ug/ml
Spiked Amount 50.000		Recovery =	40.58%
Target Compounds			
1) T 1,2,3-Trimethylbenzen...	4.471	2602913	20.219 ug/ml
2) T Naphthalene (C11.7)	6.140	2634027	20.881 ug/ml
3) T 2-Methylnaphthalene (...)	7.239	2750653	21.596 ug/ml
5) T Acenaphthylene (C15.06)	8.540	2589501	19.923 ug/ml
7) T Acenaphthene (C15.5)	8.839	2774466	20.034 ug/ml
8) T Flouorene (C16.55)	9.632	2647517	20.425 ug/ml
9) T Phenanthrene (C19.36)	11.038	2400523	19.862 ug/ml
10) T Anthracene (C19.43)	11.115	2771287	19.975 ug/ml
12) T Fluoranthene (C21.85)	12.863	2685612	20.716 ug/ml
13) T Pyrene (C20.8)	13.159	2717988	20.816 ug/ml
14) T Benzo[a]anthracene (C...	15.043	2265814	19.917 ug/mlm
15) T Chrysene (C27.41)	15.086	2988800	21.143 ug/ml
16) T benzo[b]fluoranthene ...	16.605	2259770	19.716 ug/mlm
17) T Bnezo[k]fluoranthene ...	16.636	2740458	20.380 ug/mlm
18) T Benzo[a]pyrene (C31.34)	16.989	2477411	19.937 ug/ml
19) T Indeno[1,2,3-cd]pyren...	18.365	1503618	15.212 ug/mlm
20) T Dibenz[a,h]anthracene...	18.404	3385305	22.996 ug/ml
21) T Benzo[g,h,i]perylene ...	18.616	2535444	19.399 ug/ml

(f)=RT Delta > 1/2 Window

(m)=manual int.

Data Path : Z:\pestpcbsrv\HPCHEM1\FID_G\Data\FG092324AR\
 Data File : FG014330.D
 Signal(s) : FID1A.ch
 Acq On : 23 Sep 2024 10:15
 Operator : YP\AJ
 Sample : 20 PPM AROMATIC HC STD
 Misc :
 ALS Vial : 11 Sample Multiplier: 1

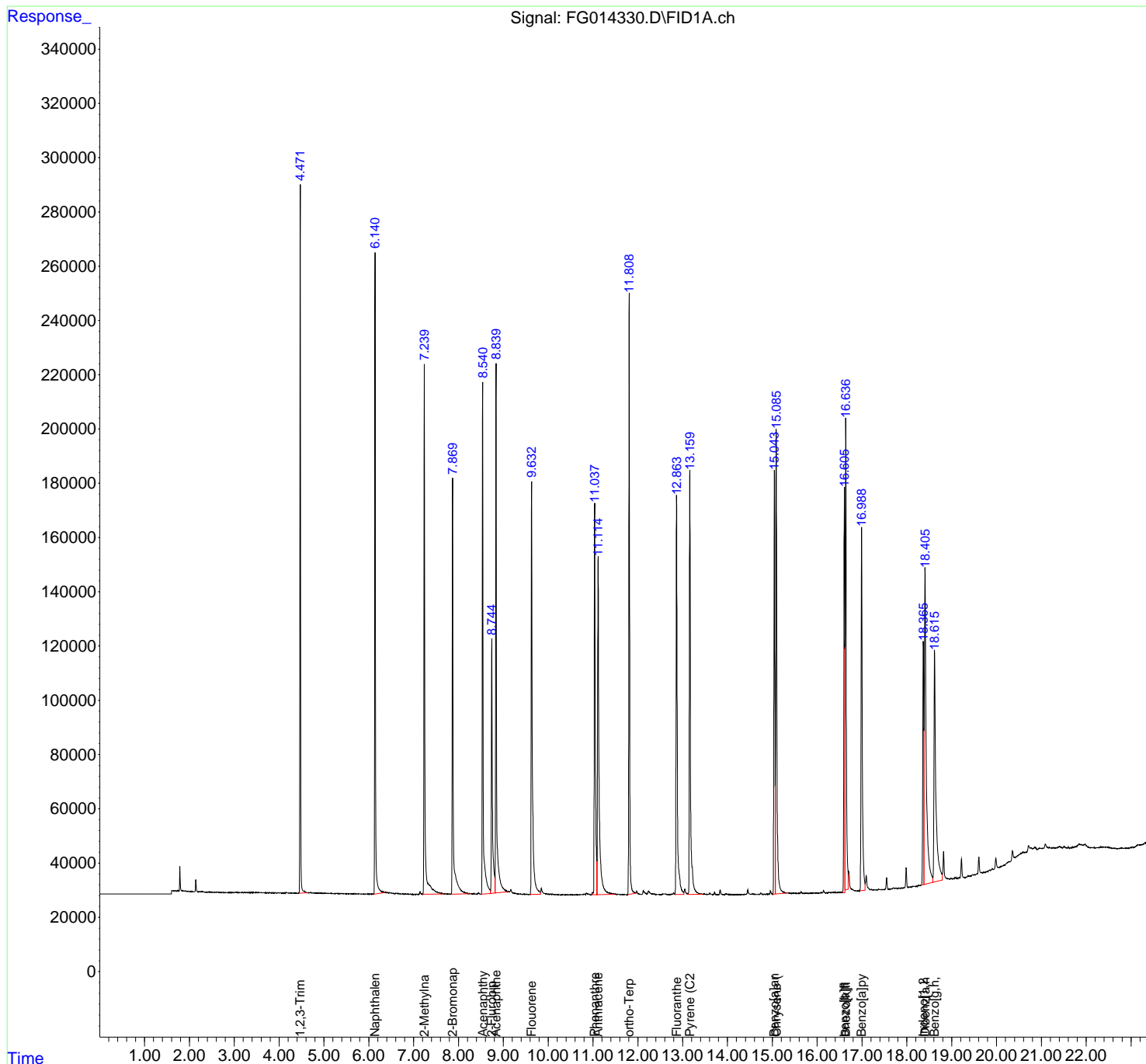
Instrument :
 FID_G
ClientSampleId :
 20 PPM AROMATIC HC STD

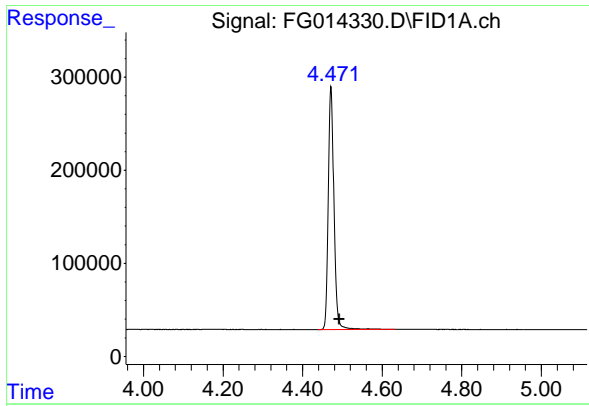
Manual Integrations
APPROVED

Reviewed By :Yogesh Patel 09/24/2024
 Supervised By :Ankita Jodhani 09/24/2024

Integration File: autoint1.e
 Quant Time: Sep 24 01:30:13 2024
 Quant Method : Z:\pestpcbsrv\HPCHEM1\FID_G\Method\Aromatic EPH 090424.M
 Quant Title : GC Extractables
 QLast Update : Wed Sep 04 11:28:29 2024
 Response via : Initial Calibration
 Integrator: ChemStation

Volume Inj. : 1 µl
 Signal Phase : Rxi-1ms
 Signal Info : 20M x 0.18mm x 0.18µm





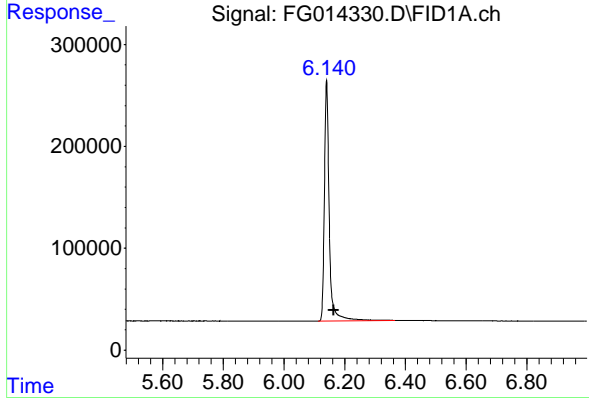
#1 1,2,3-Trimethylbenzene (C10.1)

R.T.: 4.471 min
 Delta R.T.: -0.021 min
 Response: 2602913
 Conc: 20.22 ug/ml

Instrument : FID_G
 Client Sample Id : 20 PPM AROMATIC HC STD

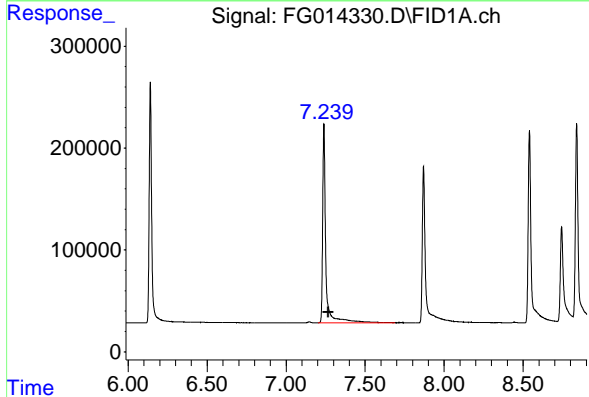
Manual Integrations
 APPROVED

Reviewed By :Yogesh Patel 09/24/2024
 Supervised By :Ankita Jodhani 09/24/2024



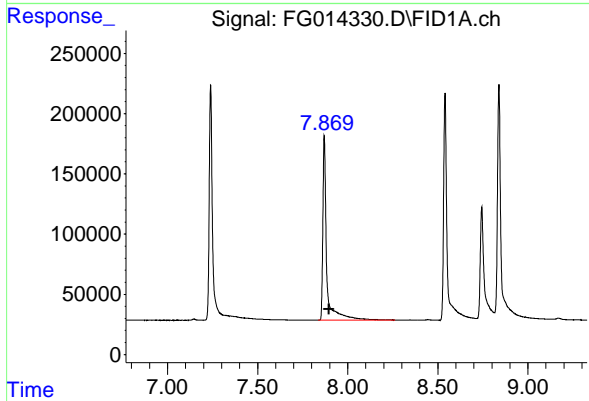
#2 Naphthalene (C11.7)

R.T.: 6.140 min
 Delta R.T.: -0.024 min
 Response: 2634027
 Conc: 20.88 ug/ml



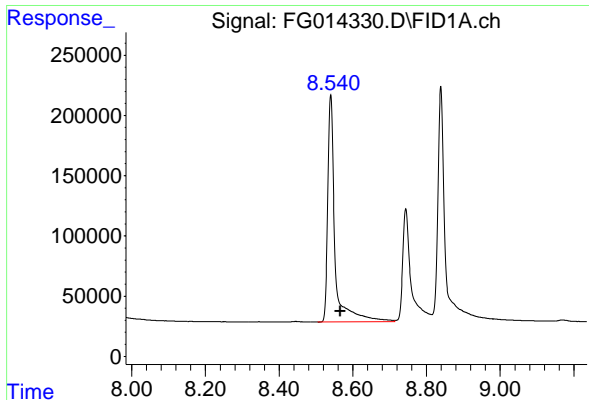
#3 2-Methylnaphthalene (C12.89)

R.T.: 7.239 min
 Delta R.T.: -0.027 min
 Response: 2750653
 Conc: 21.60 ug/ml



#4 2-Bromonaphthalene (SURR)

R.T.: 7.870 min
 Delta R.T.: -0.026 min
 Response: 2308939
 Conc: 20.64 ug/ml



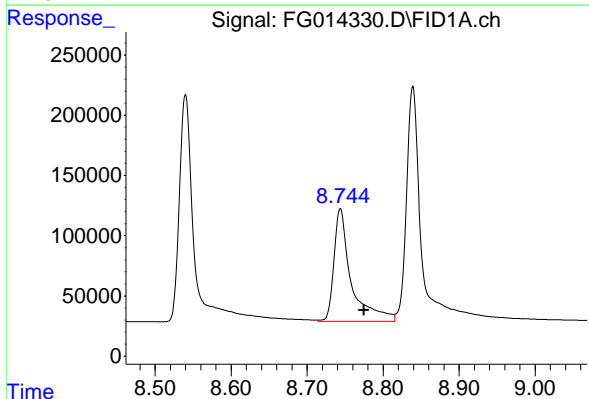
#5 Acenaphthylene (C15.06)

R.T.: 8.540 min
 Delta R.T.: -0.026 min
 Response: 2589501
 Conc: 19.92 ug/ml

Instrument : FID_G
 Client Sample Id : 20 PPM AROMATIC HC STD

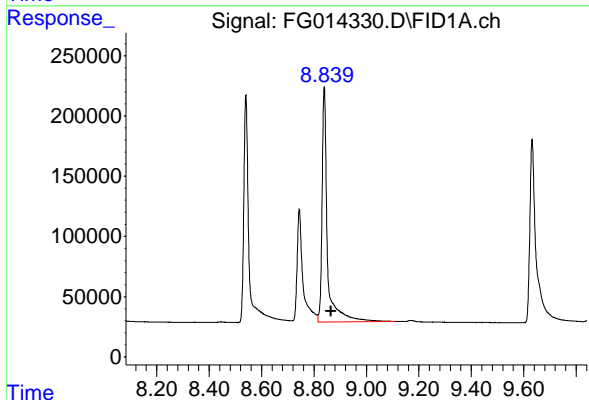
Manual Integrations
 APPROVED

Reviewed By :Yogesh Patel 09/24/2024
 Supervised By :Ankita Jodhani 09/24/2024



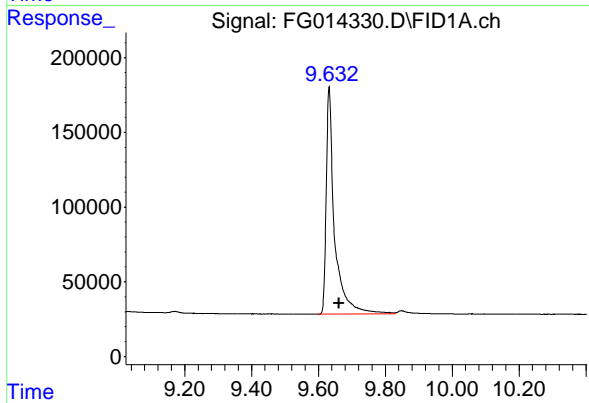
#6 2-Fluorobiphenyl (SURR)

R.T.: 8.744 min
 Delta R.T.: -0.031 min
 Response: 1473663
 Conc: 20.24 ug/ml



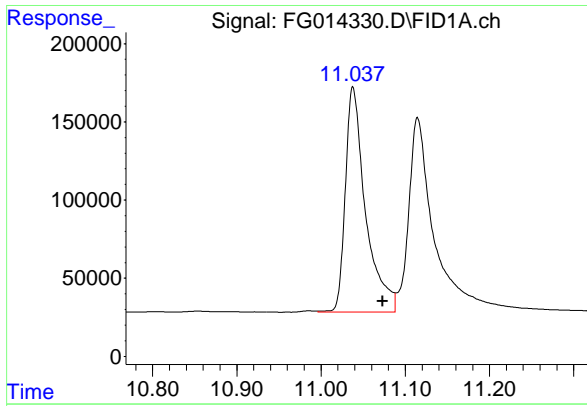
#7 Acenaphthene (C15.5)

R.T.: 8.839 min
 Delta R.T.: -0.025 min
 Response: 2774466
 Conc: 20.03 ug/ml



#8 Fluorene (C16.55)

R.T.: 9.632 min
 Delta R.T.: -0.029 min
 Response: 2647517
 Conc: 20.43 ug/ml



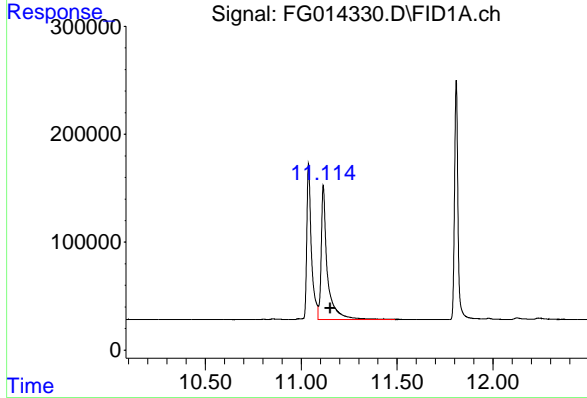
#9 Phenanthrene (C19.36)

R.T.: 11.038 min
 Delta R.T.: -0.035 min
 Response: 2400523
 Conc: 19.86 ug/ml

Instrument : FID_G
 Client Sample Id : 20 PPM AROMATIC HC STD

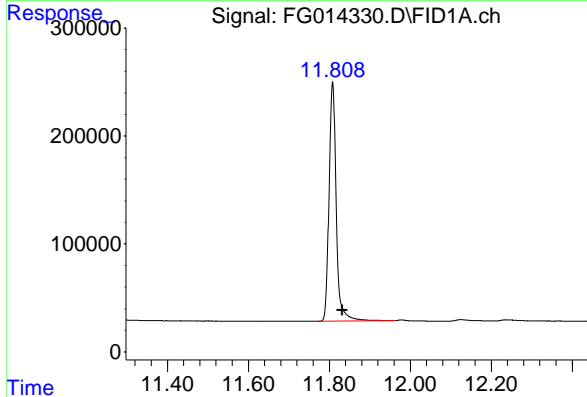
Manual Integrations
 APPROVED

Reviewed By :Yogesh Patel 09/24/2024
 Supervised By :Ankita Jodhani 09/24/2024



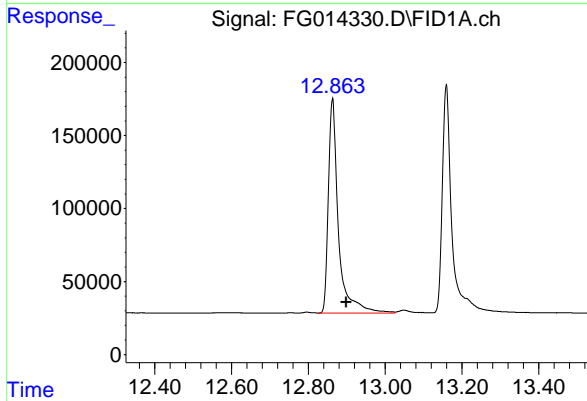
#10 Anthracene (C19.43)

R.T.: 11.115 min
 Delta R.T.: -0.037 min
 Response: 2771287
 Conc: 19.98 ug/ml



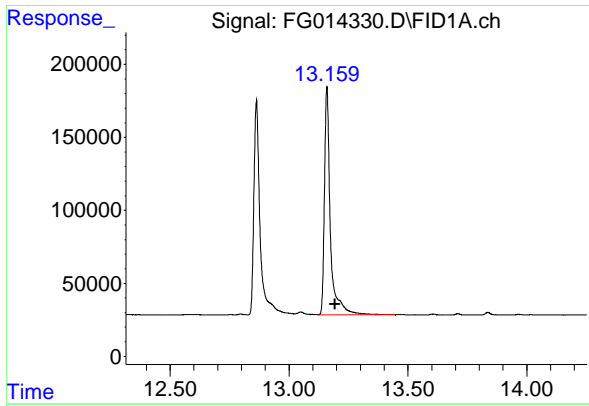
#11 ortho-Terphenyl (SURR)

R.T.: 11.808 min
 Delta R.T.: -0.024 min
 Response: 2734964
 Conc: 20.29 ug/ml



#12 Fluoranthene (C21.85)

R.T.: 12.863 min
 Delta R.T.: -0.036 min
 Response: 2685612
 Conc: 20.72 ug/ml



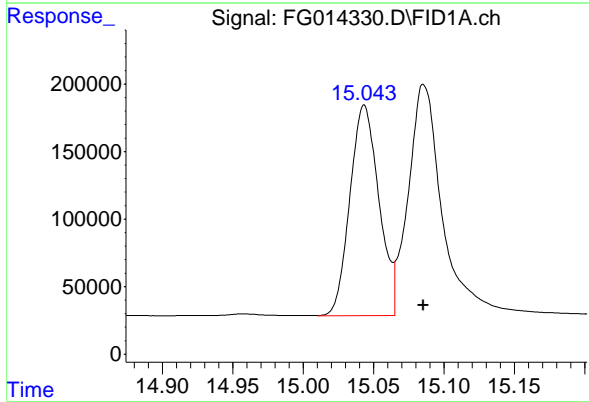
#13 Pyrene (C20.8)

R.T.: 13.159 min
 Delta R.T.: -0.034 min
 Response: 2717988
 Conc: 20.82 ug/ml

Instrument : FID_G
 Client Sample Id : 20 PPM AROMATIC HC STD

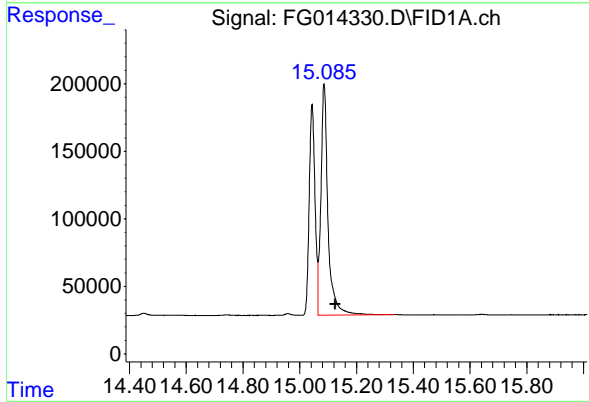
Manual Integrations
 APPROVED

Reviewed By :Yogesh Patel 09/24/2024
 Supervised By :Ankita Jodhani 09/24/2024



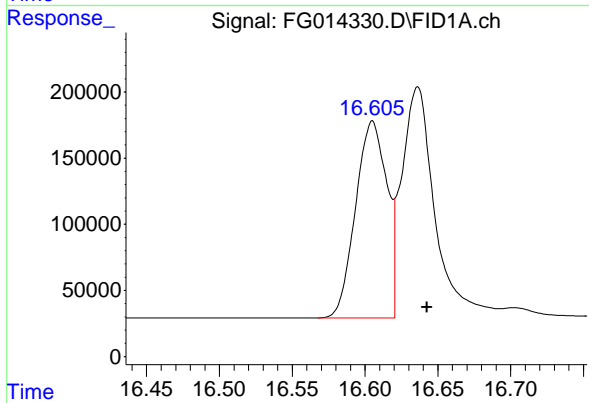
#14 Benzo[a]anthracene (C26.37)

R.T.: 15.043 min
 Delta R.T.: -0.042 min
 Response: 2265814
 Conc: 19.92 ug/ml m



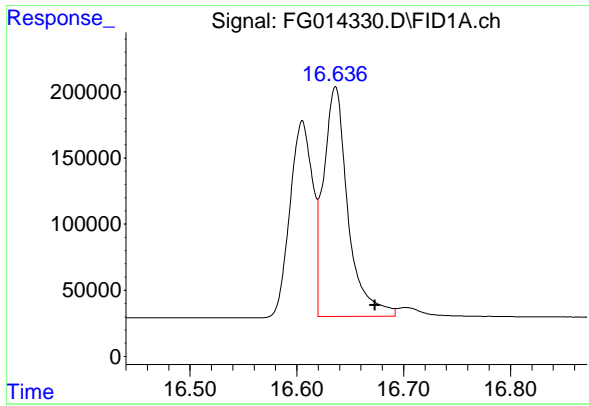
#15 Chrysene (C27.41)

R.T.: 15.086 min
 Delta R.T.: -0.039 min
 Response: 2988800
 Conc: 21.14 ug/ml



#16 benzo[b]fluoranthene (C30.41)

R.T.: 16.605 min
 Delta R.T.: -0.038 min
 Response: 2259770
 Conc: 19.72 ug/ml m



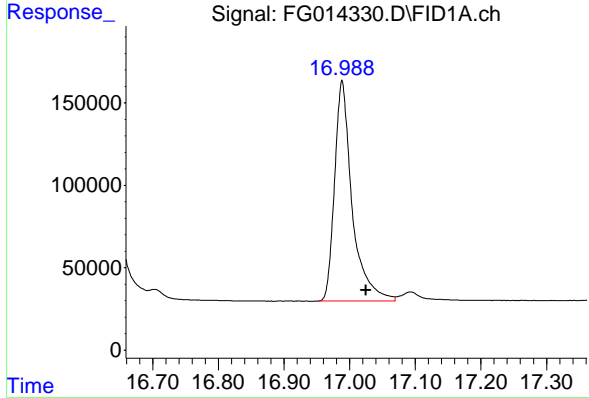
#17 Bnezo[k]fluoranthene (C30.14)

R.T.: 16.636 min
 Delta R.T.: -0.037 min
 Response: 2740458
 Conc: 20.38 ug/ml

Instrument : FID_G
 ClientSampleId : 20 PPM AROMATIC HC STD

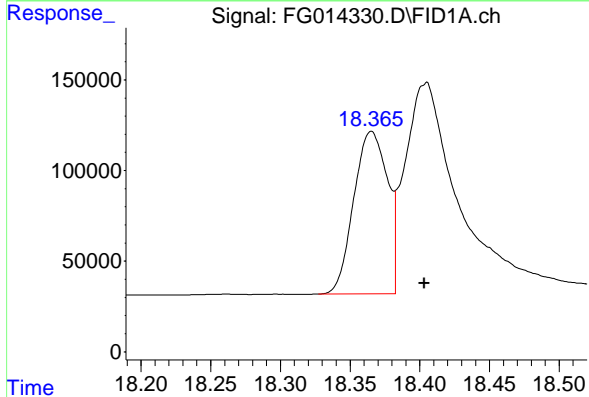
Manual Integrations
 APPROVED

Reviewed By :Yogesh Patel 09/24/2024
 Supervised By :Ankita Jodhani 09/24/2024



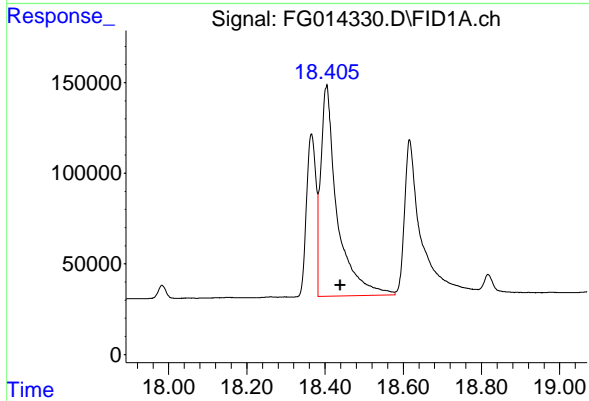
#18 Benzo[a]pyrene (C31.34)

R.T.: 16.989 min
 Delta R.T.: -0.036 min
 Response: 2477411
 Conc: 19.94 ug/ml



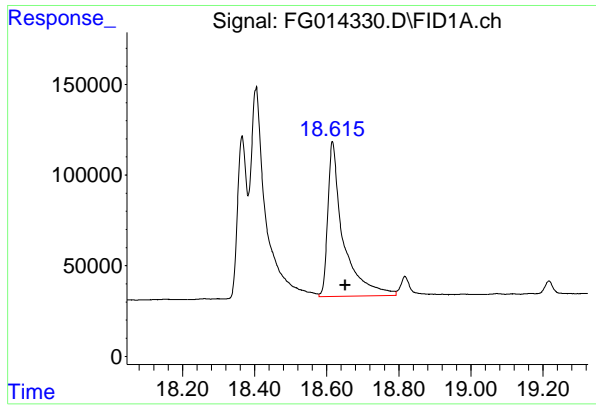
#19 Indeno[1,2,3-cd]pyrene (C35.01)

R.T.: 18.365 min
 Delta R.T.: -0.038 min
 Response: 1503618
 Conc: 15.21 ug/ml m



#20 Dibenz[a,h]anthracene (C30.36)

R.T.: 18.404 min
 Delta R.T.: -0.036 min
 Response: 3385305
 Conc: 23.00 ug/ml



#21 Benzo[g,h,i]perylene (C34.01)

R.T.: 18.616 min
Delta R.T.: -0.036 min
Response: 2535444
Conc: 19.40 ug/ml

Instrument :

FID_G

ClientSampleId :

20 PPM AROMATIC HC STD

Manual Integrations

APPROVED

Reviewed By :Yogesh Patel 09/24/2024

Supervised By :Ankita Jodhani 09/24/2024