

Data Path : Z:\pestpcbsrv\HPCHEM1\FID_G\Data\FG092324AR\
 Data File : FG014340.D
 Signal(s) : FID1A.ch
 Acq On : 23 Sep 2024 16:08
 Operator : YP\AJ
 Sample : P4104-30DL 5X
 Misc :
 ALS Vial : 19 Sample Multiplier: 1

Instrument :
 FID_G
ClientSampleId :
 WC-23-EPH-5DL

Manual Integrations
APPROVED
 Reviewed By :Yogesh Patel 09/24/2024
 Supervised By :Ankita Jodhani 09/24/2024

Integration File: autoint1.e
 Quant Time: Sep 24 01:32:31 2024
 Quant Method : Z:\pestpcbsrv\HPCHEM1\FID_G\Method\Aromatic EPH 090424.M
 Quant Title : GC Extractables
 QLast Update : Wed Sep 04 11:28:29 2024
 Response via : Initial Calibration
 Integrator: ChemStation

Volume Inj. : 1 µl
 Signal Phase : Rxi-1ms
 Signal Info : 20M x 0.18mm x 0.18µm

Compound	R.T.	Response	Conc Units
System Monitoring Compounds			
4) S 2-Bromonaphthalene (S...	7.869	1161076	10.378 ug/mlm
Spiked Amount	50.000	Recovery	= 20.76%
6) S 2-Flurobiphenyl (SURR)	8.745	768252	10.552 ug/mlm
Spiked Amount	50.000	Recovery	= 21.10%
11) S ortho-Terphenyl (SURR)	11.808	1252914	9.295 ug/ml
Spiked Amount	50.000	Recovery	= 18.59%

Target Compounds

(f)=RT Delta > 1/2 Window

(m)=manual int.

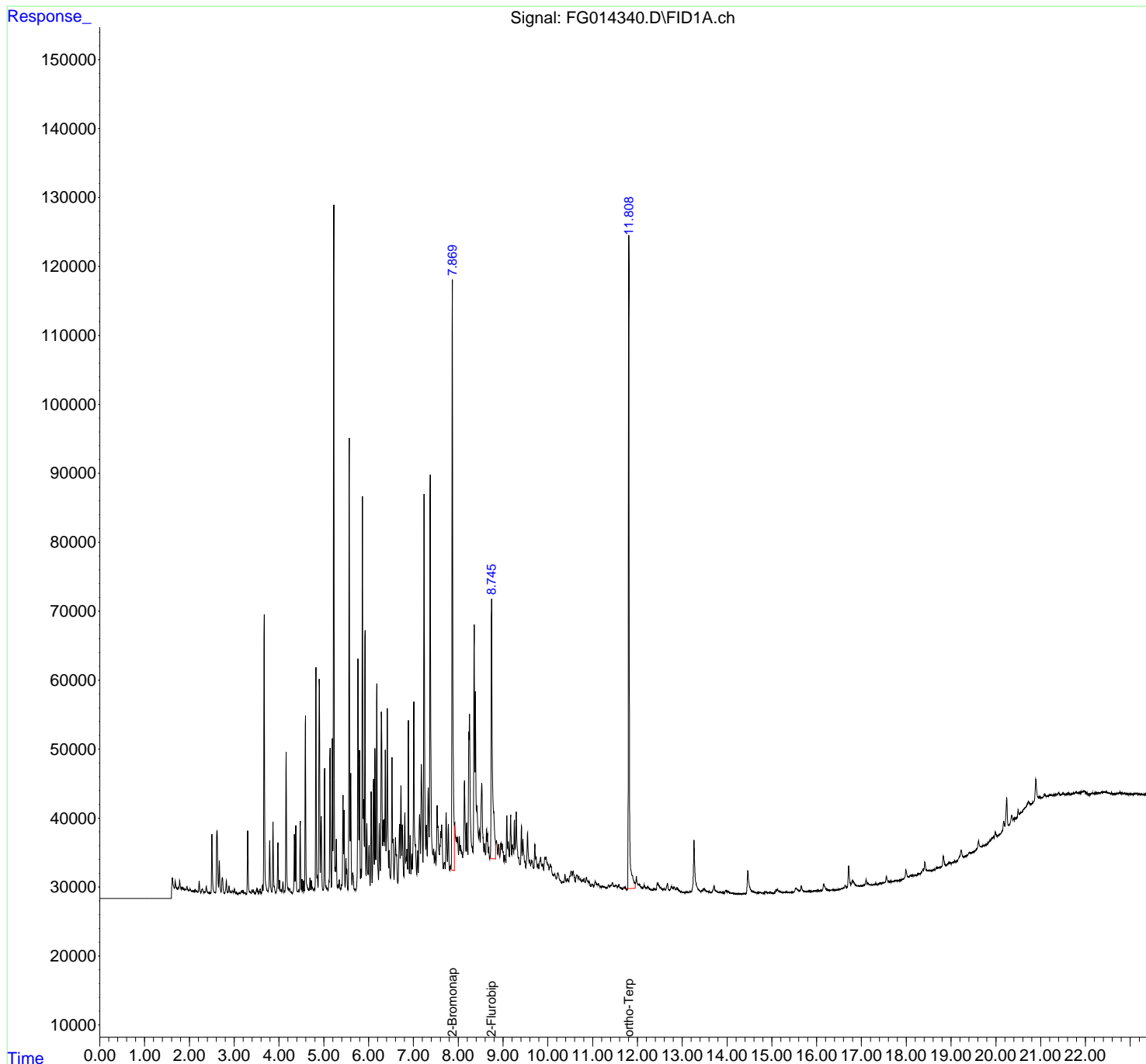
Data Path : Z:\pestpcbsrv\HPCHEM1\FID_G\Data\FG092324AR\
Data File : FG014340.D
Signal(s) : FID1A.ch
Acq On : 23 Sep 2024 16:08
Operator : YP\AJ
Sample : P4104-30DL 5X
Misc :
ALS Vial : 19 Sample Multiplier: 1

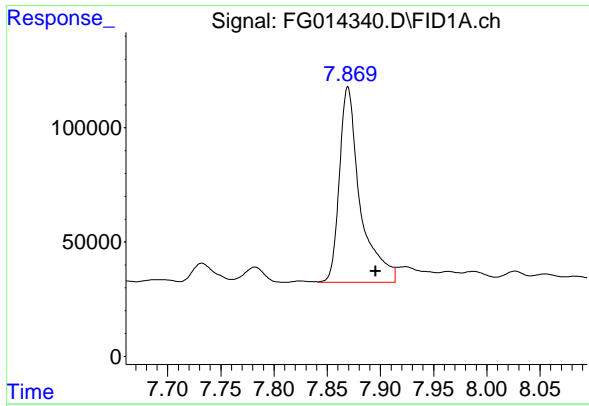
Instrument :
FID_G
ClientSampleId :
WC-23-EPH-5DL

Manual Integrations
APPROVED
Reviewed By :Yogesh Patel 09/24/2024
Supervised By :Ankita Jodhani 09/24/2024

Integration File: autoint1.e
Quant Time: Sep 24 01:32:31 2024
Quant Method : Z:\pestpcbsrv\HPCHEM1\FID_G\Method\Aromatic EPH 090424.M
Quant Title : GC Extractables
QLast Update : Wed Sep 04 11:28:29 2024
Response via : Initial Calibration
Integrator: ChemStation

Volume Inj. : 1 µl
Signal Phase : Rxi-1ms
Signal Info : 20M x 0.18mm x 0.18µm





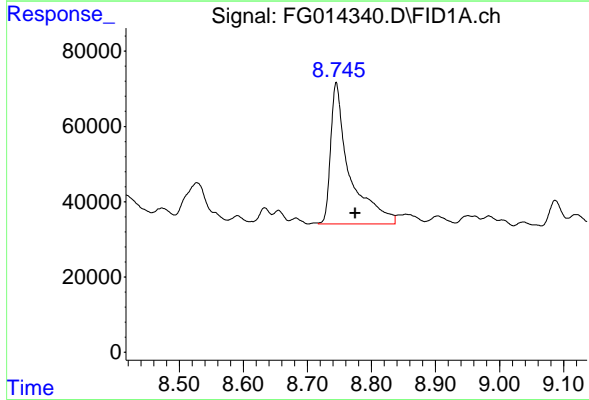
#4 2-Bromonaphthalene (SURR)

R.T.: 7.869 min
 Delta R.T.: -0.026 min
 Response: 1161076
 Conc: 10.38 ug/ml

Instrument :
 FID_G
 ClientSampleId :
 WC-23-EPH-5DL

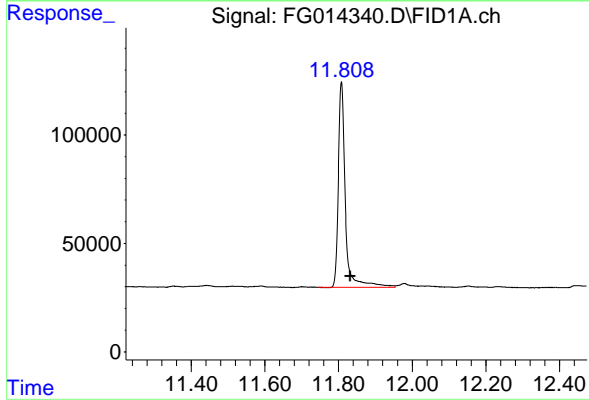
Manual Integrations
 APPROVED

Reviewed By :Yogesh Patel 09/24/2024
 Supervised By :Ankita Jodhani 09/24/2024



#6 2-Fluorobiphenyl (SURR)

R.T.: 8.745 min
 Delta R.T.: -0.030 min
 Response: 768252
 Conc: 10.55 ug/ml m



#11 ortho-Terphenyl (SURR)

R.T.: 11.808 min
 Delta R.T.: -0.024 min
 Response: 1252914
 Conc: 9.29 ug/ml