

Data Path : Z:\pestpcbsrv\HPCHEM1\FID_G\Data\FG102418\
 Data File : FG002666.D
 Signal(s) : FID1A.ch
 Acq On : 25 Oct 2018 00:27
 Operator : AJ\SJ
 Sample : J5636-01MS
 Misc :
 ALS Vial : 22 Sample Multiplier: 1

Integration File: autoint1.e
 Quant Time: Oct 25 04:36:21 2018
 Quant Method : Z:\pestpcbsrv\HPCHEM1\FID_G\Method\FG100118.M
 Quant Title :
 QLast Update : Mon Oct 01 12:36:17 2018
 Response via : Initial Calibration
 Integrator: ChemStation

Volume Inj. : 1uL
 Signal Phase : Rxi-1ms
 Signal Info : 20mx0.18mmx0.18um

Compound	R.T.	Response	Conc Units

System Monitoring Compounds			
9) S TETRACOSANE-d50 (SURR...	14.763	2293836	19.984 ug/ml
Target Compounds			
1) N-OCTANE	2.341	1197596	9.406 ug/ml
2) N-DECANE	4.460	2034270	15.613 ug/ml
3) N-DODECANE	6.490	2276787	17.252 ug/ml
4) N-TETRADECANE	8.291	2567827	19.259 ug/ml
5) N-HEXADECANE	9.898	2583317	19.257 ug/ml
6) N-OCTADECANE	11.344	2505331	18.603 ug/ml
7) N-EICOSANE	12.659	2613093	19.590 ug/ml
8) N-DOCOSANE	13.861	2688651	20.376 ug/ml
10) N-TETRACOSANE	14.968	3185813	24.506 ug/ml
11) N-HEXACOSANE	15.993	2531229	19.705 ug/ml
12) N-OCTACOSANE	16.946	2614148	20.619 ug/ml
13) N-TRIACONTANE	17.838	2567262	20.403 ug/ml
14) N-DOTRIACONTANE	18.672	2466804	20.092 ug/ml
15) N-TETRATRIACONTANE	19.459	2334843	19.567 ug/ml
16) N-HEXATRIACONTANE	20.201	2146585	19.348 ug/ml
17) N-OCTATRIACONTANE	20.968	2013923	20.545 ug/ml
18) N-TETRACONTANE	21.931	2084548	22.287 ug/ml

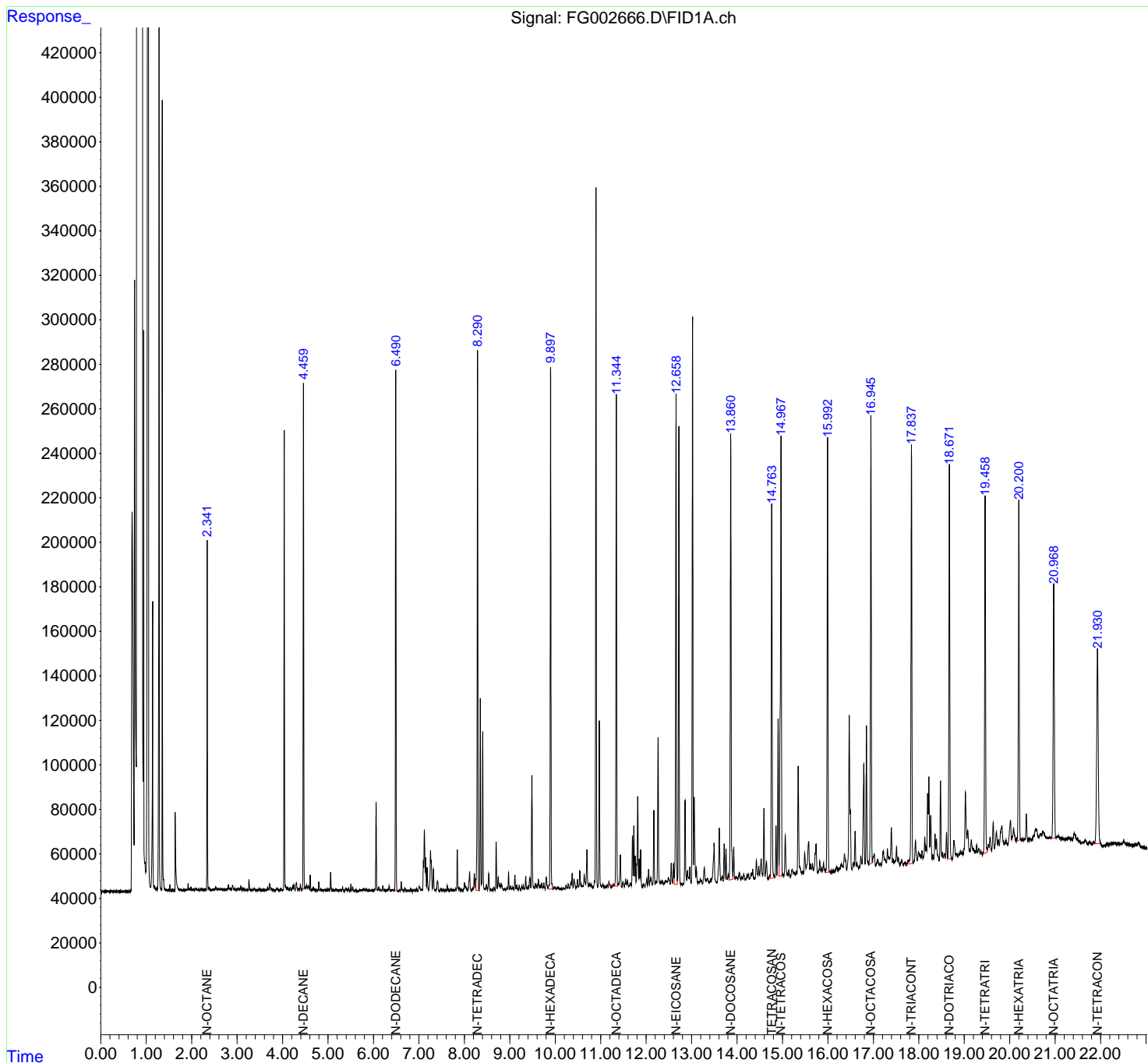
(f)=RT Delta > 1/2 Window

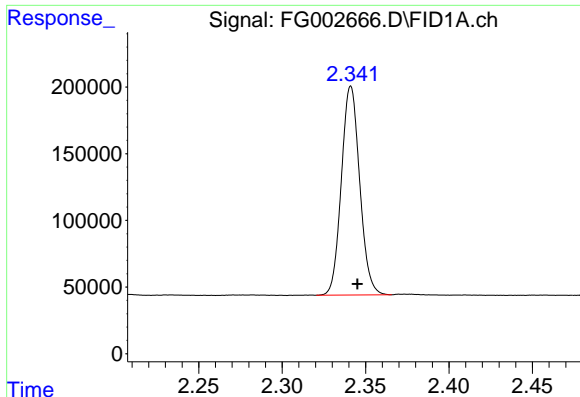
(m)=manual int.

Data Path : Z:\pestpcbsrv\HPCHEM1\FID_G\Data\FG102418\
 Data File : FG002666.D
 Signal(s) : FID1A.ch
 Acq On : 25 Oct 2018 00:27
 Operator : AJ\SJ
 Sample : J5636-01MS
 Misc :
 ALS Vial : 22 Sample Multiplier: 1

Integration File: autoint1.e
 Quant Time: Oct 25 04:36:21 2018
 Quant Method : Z:\pestpcbsrv\HPCHEM1\FID_G\Method\FG100118.M
 Quant Title :
 QLast Update : Mon Oct 01 12:36:17 2018
 Response via : Initial Calibration
 Integrator: ChemStation

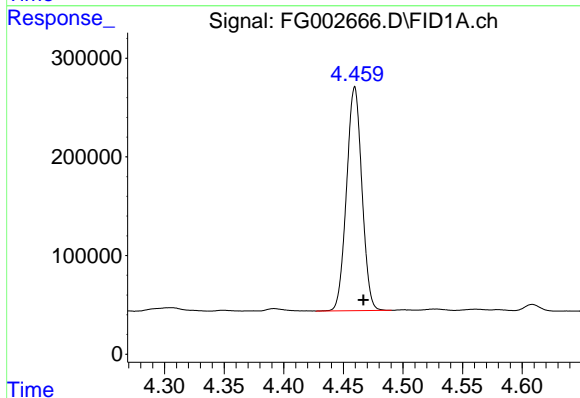
Volume Inj. : 1uL
 Signal Phase : Rxi-1ms
 Signal Info : 20mx0.18mmx0.18um





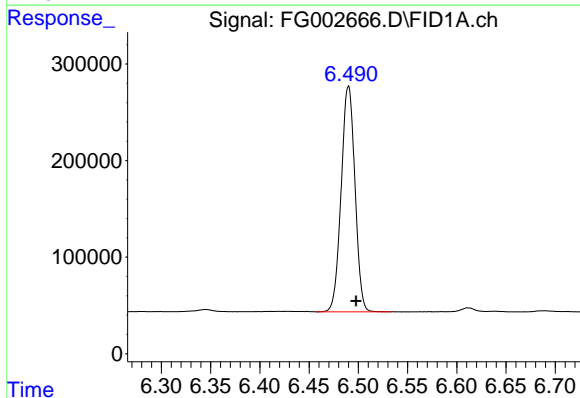
#1 N-OCTANE

R.T.: 2.341 min
 Delta R.T.: -0.004 min
 Response: 1197596
 Conc: 9.41 ug/ml



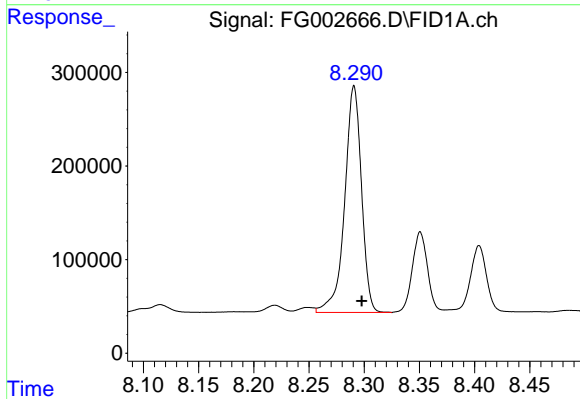
#2 N-DECANE

R.T.: 4.460 min
 Delta R.T.: -0.007 min
 Response: 2034270
 Conc: 15.61 ug/ml



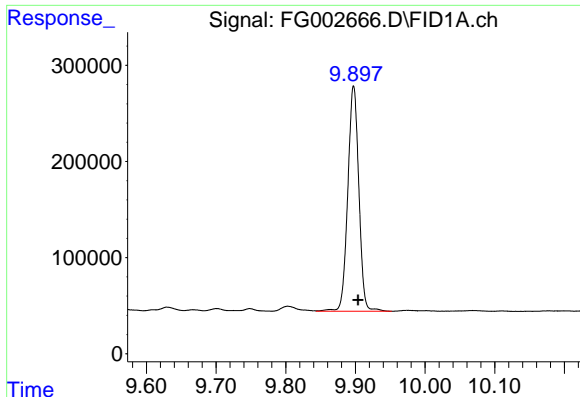
#3 N-DODECANE

R.T.: 6.490 min
 Delta R.T.: -0.008 min
 Response: 2276787
 Conc: 17.25 ug/ml



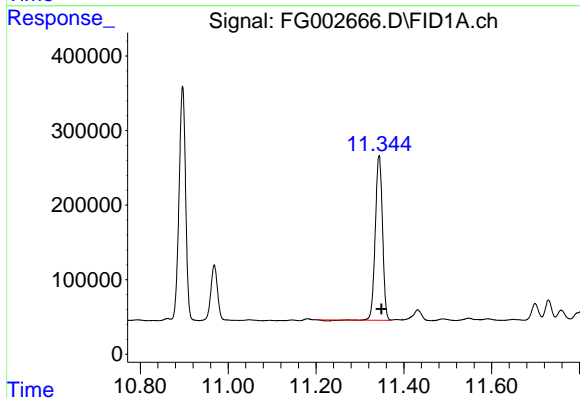
#4 N-TETRADECANE

R.T.: 8.291 min
 Delta R.T.: -0.007 min
 Response: 2567827
 Conc: 19.26 ug/ml



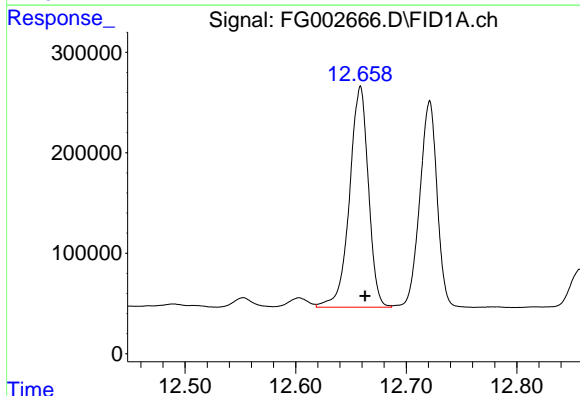
#5 N-HEXADECANE

R.T.: 9.898 min
Delta R.T.: -0.006 min
Response: 2583317
Conc: 19.26 ug/ml



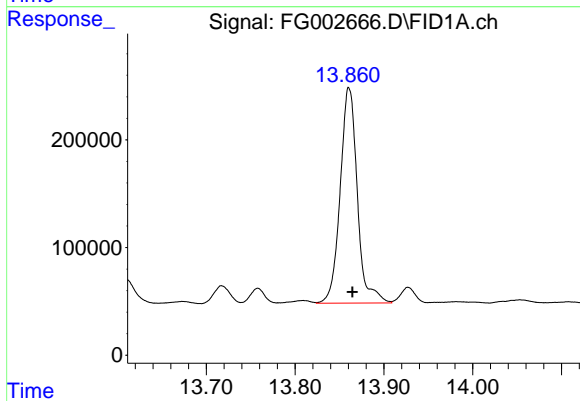
#6 N-OCTADECANE

R.T.: 11.344 min
Delta R.T.: -0.006 min
Response: 2505331
Conc: 18.60 ug/ml



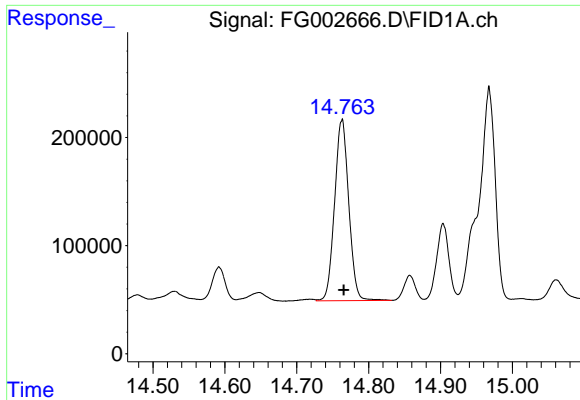
#7 N-EICOSANE

R.T.: 12.659 min
Delta R.T.: -0.004 min
Response: 2613093
Conc: 19.59 ug/ml



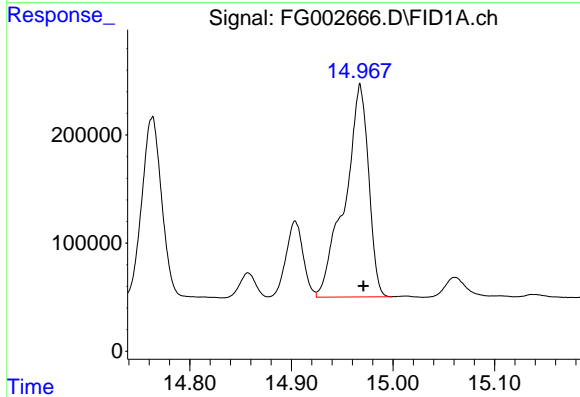
#8 N-DOCOSANE

R.T.: 13.861 min
Delta R.T.: -0.004 min
Response: 2688651
Conc: 20.38 ug/ml



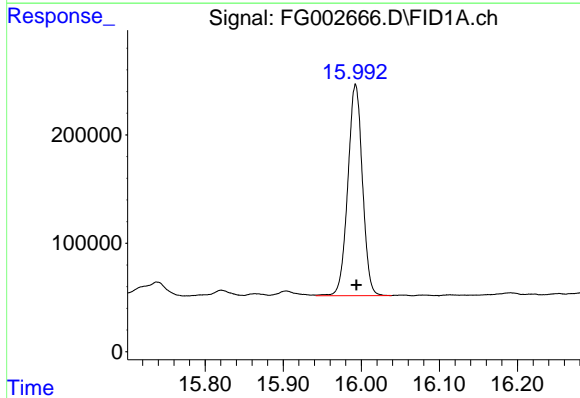
#9 TETRACOSANE-d50 (SURROGATE)

R.T.: 14.763 min
Delta R.T.: -0.002 min
Response: 2293836
Conc: 19.98 ug/ml



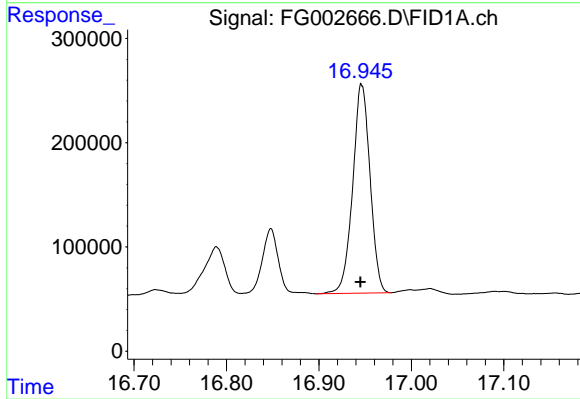
#10 N-TETRACOSANE

R.T.: 14.968 min
Delta R.T.: -0.003 min
Response: 3185813
Conc: 24.51 ug/ml



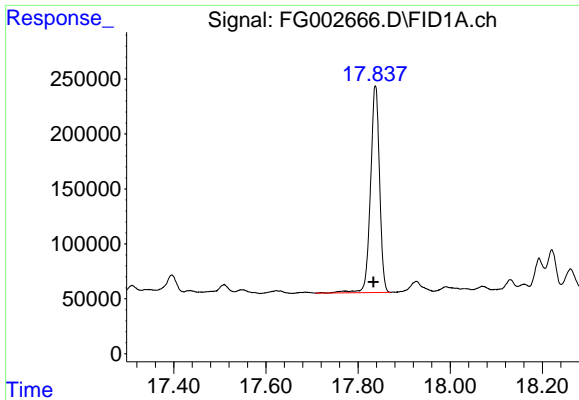
#11 N-HEXACOSANE

R.T.: 15.993 min
Delta R.T.: 0.000 min
Response: 2531229
Conc: 19.70 ug/ml



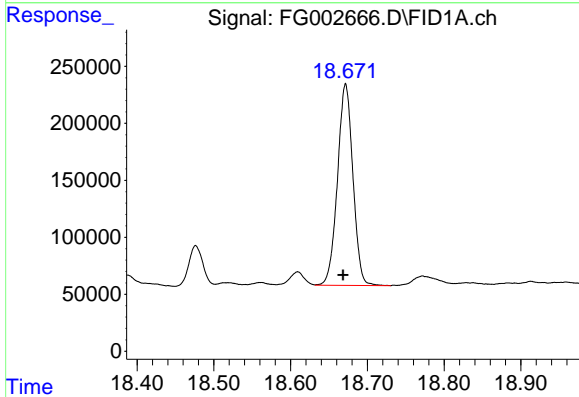
#12 N-OCTACOSANE

R.T.: 16.946 min
Delta R.T.: 0.001 min
Response: 2614148
Conc: 20.62 ug/ml



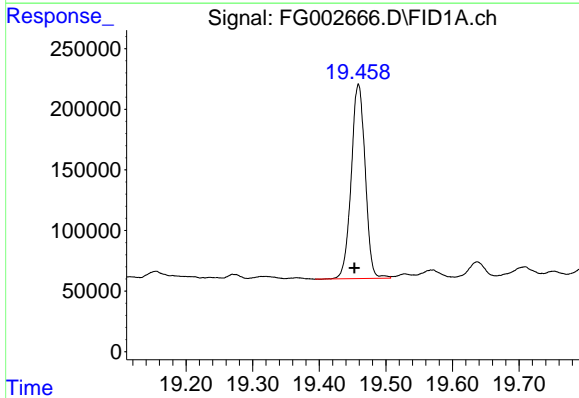
#13 N-TRIACONTANE

R.T.: 17.838 min
Delta R.T.: 0.004 min
Response: 2567262
Conc: 20.40 ug/ml



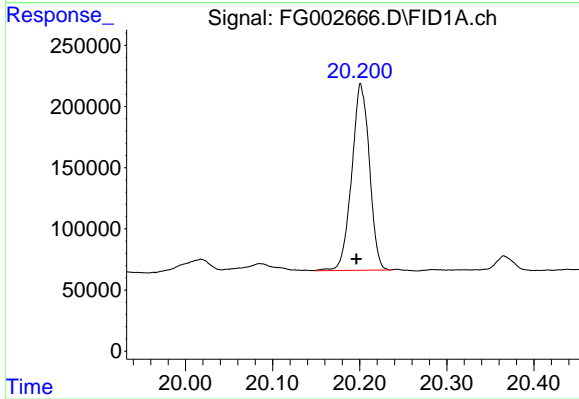
#14 N-DOTRIACONTANE

R.T.: 18.672 min
Delta R.T.: 0.003 min
Response: 2466804
Conc: 20.09 ug/ml



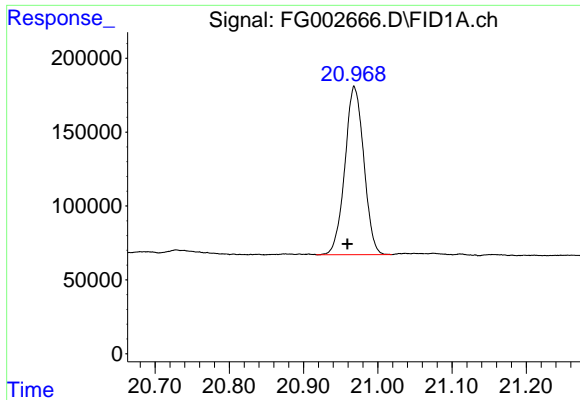
#15 N-TETRATRIACONTANE

R.T.: 19.459 min
Delta R.T.: 0.006 min
Response: 2334843
Conc: 19.57 ug/ml



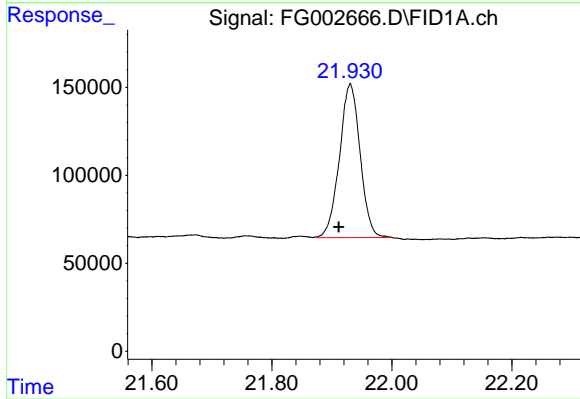
#16 N-HEXATRIACONTANE

R.T.: 20.201 min
Delta R.T.: 0.005 min
Response: 2146585
Conc: 19.35 ug/ml



#17 N-OCTATRIACONTANE

R.T.: 20.968 min
Delta R.T.: 0.009 min
Response: 2013923
Conc: 20.55 ug/ml



#18 N-TETRACONTANE

R.T.: 21.931 min
Delta R.T.: 0.019 min
Response: 2084548
Conc: 22.29 ug/ml