

Data Path : Z:\pestpcbsrv\HPCHEM1\FID\_G\Data\FG111221\  
 Data File : FG009035.D  
 Signal(s) : FID1A.ch  
 Acq On : 12 Nov 2021 15:45  
 Operator : AJ\MA  
 Sample : M4661-04  
 Misc :  
 ALS Vial : 7 Sample Multiplier: 1

Instrument :  
 FID\_G  
 ClientSampleId :

Integration File: autoint1.e  
 Quant Time: Nov 12 21:43:08 2021  
 Quant Method : Z:\pestpcbsrv\HPCHEM1\FID\_G\Method\FG110121.M  
 Quant Title :  
 QLast Update : Tue Nov 02 01:56:13 2021  
 Response via : Initial Calibration  
 Integrator: ChemStation

Volume Inj. : 1uL  
 Signal Phase : Rxi-1ms  
 Signal Info : 20mx0.18mmx0.18um

Compound	R.T.	Response	Conc Units
-----			
System Monitoring Compounds			
9) S TETRACOSANE-d50 (SURR...	14.735	29136838	252.448 ug/ml
Target Compounds			
4) N-TETRADECANE	8.265	80925	0.609 ug/ml
5) N-HEXADECANE	9.867	838072	6.322 ug/ml
6) N-OCTADECANE	11.303	9827421	71.674 ug/ml
7) N-EICOSANE	12.631	8138128	59.498 ug/ml
8) N-DOCOSANE	13.805	17638079	131.794 ug/ml
10) N-TETRACOSANE	14.951	8062595	61.039 ug/ml
11) N-HEXACOSANE	15.978	20137912	158.167 ug/ml
12) N-OCTACOSANE	16.935	4755393	38.682 ug/ml
13) N-TRIACONTANE	17.806	2806774	23.972 ug/ml
14) N-DOTRIACONTANE	18.647	2399236	22.037 ug/ml
15) N-TETRATRIACONTANE	19.424	1800990	17.730 ug/ml
16) N-HEXATRIACONTANE	20.169	53084	0.563 ug/ml
17) N-OCTATRIACONTANE	20.909	456738	5.162 ug/ml
18) N-TETRACONTANE	21.859	83148	0.941 ug/ml
-----			

(f)=RT Delta > 1/2 Window

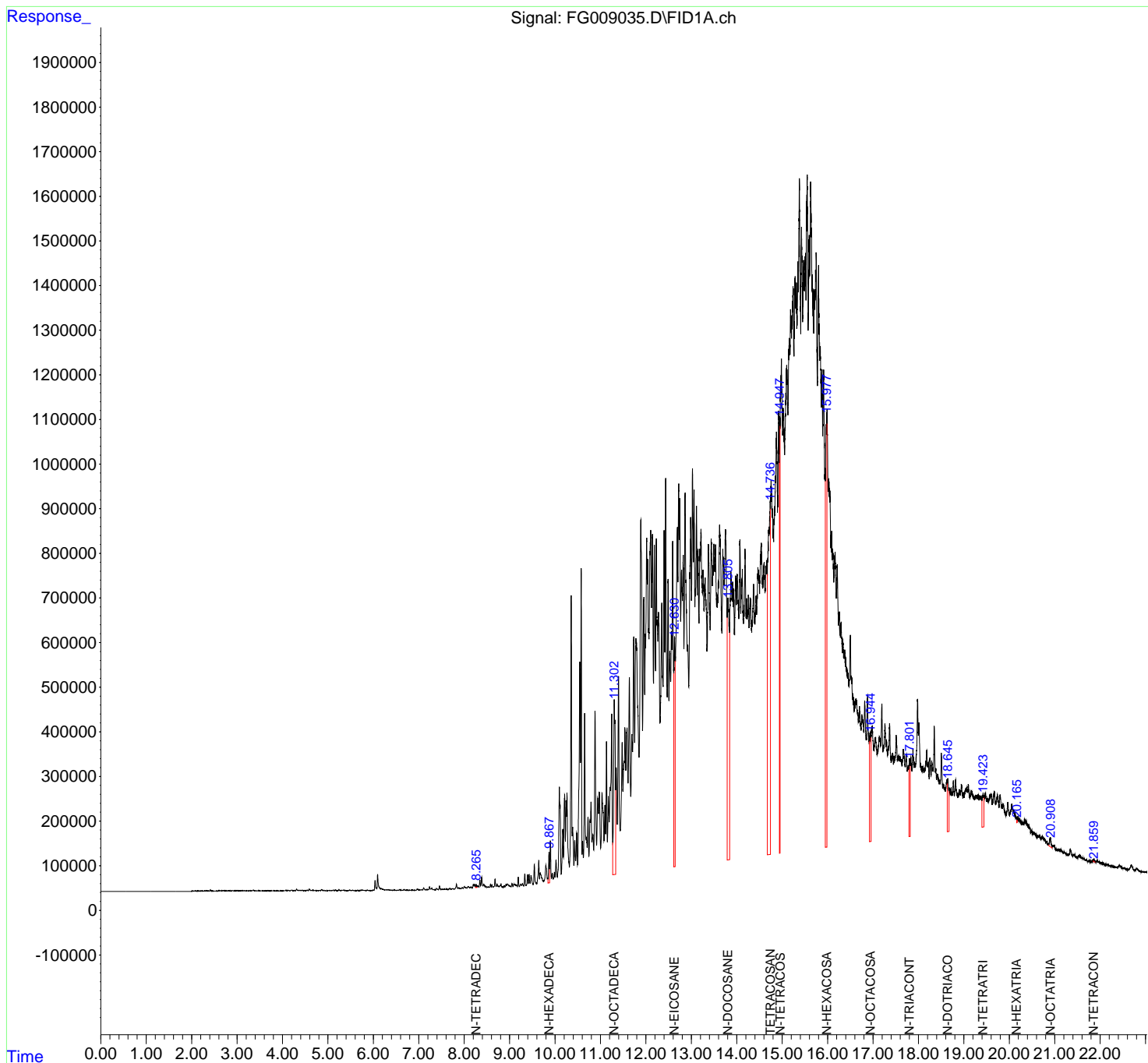
(m)=manual int.

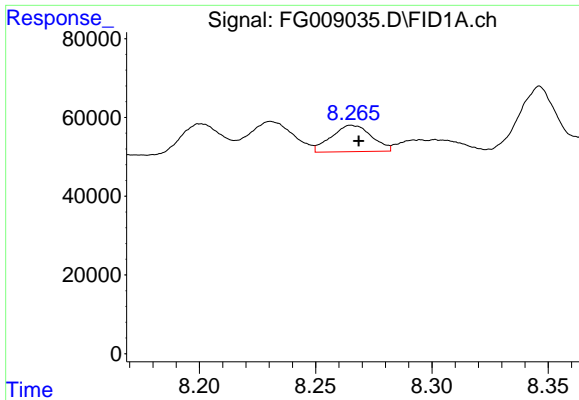
Data Path : Z:\pestpcbsrv\HPCHEM1\FID\_G\Data\FG111221\  
 Data File : FG009035.D  
 Signal(s) : FID1A.ch  
 Acq On : 12 Nov 2021 15:45  
 Operator : AJ\MA  
 Sample : M4661-04  
 Misc :  
 ALS Vial : 7 Sample Multiplier: 1

Instrument :  
 FID\_G  
 ClientSampleId :

Integration File: autoint1.e  
 Quant Time: Nov 12 21:43:08 2021  
 Quant Method : Z:\pestpcbsrv\HPCHEM1\FID\_G\Method\FG110121.M  
 Quant Title :  
 QLast Update : Tue Nov 02 01:56:13 2021  
 Response via : Initial Calibration  
 Integrator: ChemStation

Volume Inj. : 1uL  
 Signal Phase : Rxi-1ms  
 Signal Info : 20mx0.18mmx0.18um

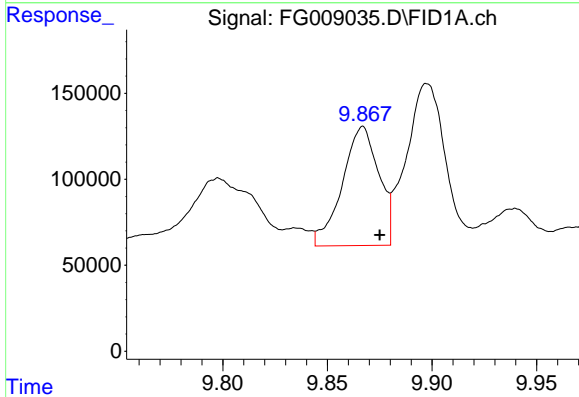




#4 N-TETRADECANE

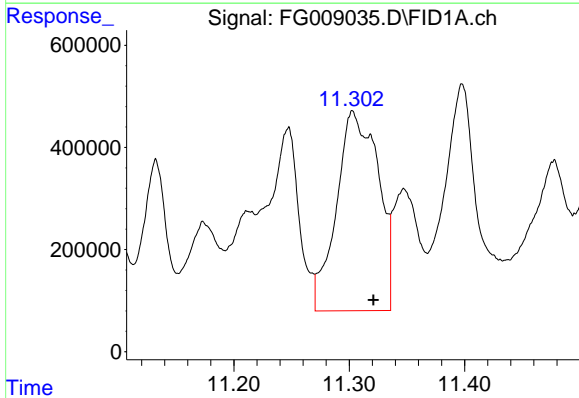
R.T.: 8.265 min  
 Delta R.T.: -0.003 min  
 Response: 80925  
 Conc: 0.61 ug/ml

Instrument :  
 FID\_G  
 ClientSampleId :



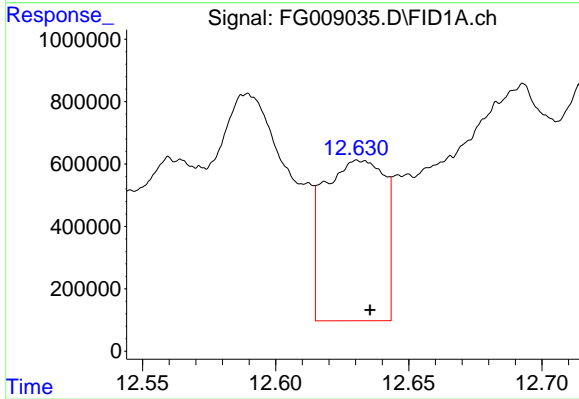
#5 N-HEXADECANE

R.T.: 9.867 min  
 Delta R.T.: -0.008 min  
 Response: 838072  
 Conc: 6.32 ug/ml



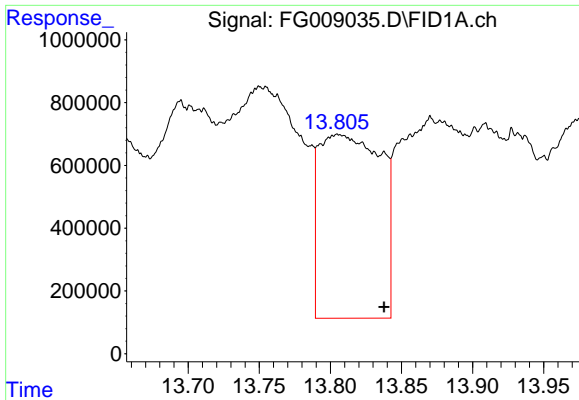
#6 N-OCTADECANE

R.T.: 11.303 min  
 Delta R.T.: -0.018 min  
 Response: 9827421  
 Conc: 71.67 ug/ml



#7 N-EICOSANE

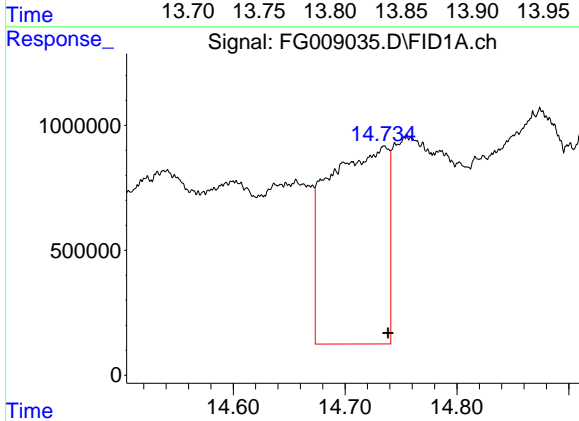
R.T.: 12.631 min  
 Delta R.T.: -0.004 min  
 Response: 8138128  
 Conc: 59.50 ug/ml



#8 N-DOCOSANE

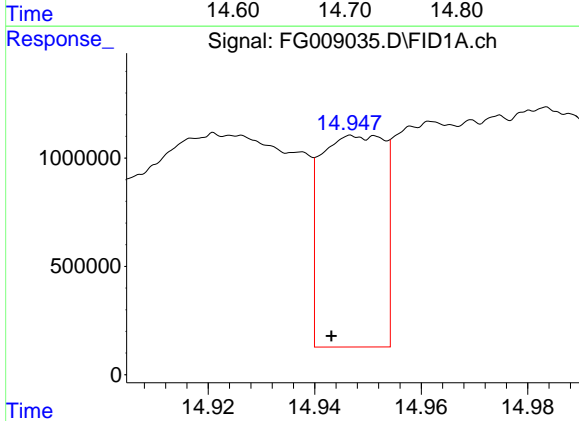
R.T.: 13.805 min  
 Delta R.T.: -0.032 min  
 Response: 17638079  
 Conc: 131.79 ug/ml

Instrument : FID\_G  
 ClientSampleId :



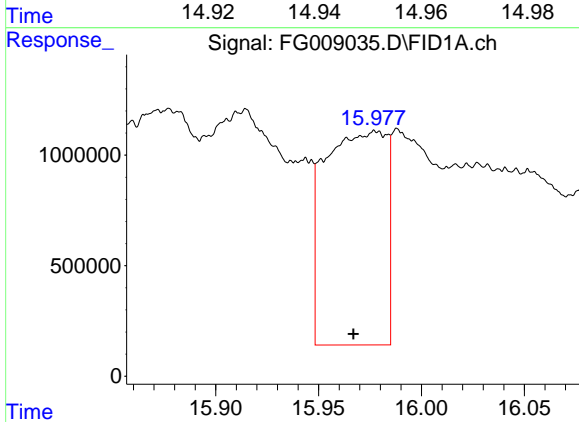
#9 TETRACOSANE-d50 (SURROGATE)

R.T.: 14.735 min  
 Delta R.T.: -0.003 min  
 Response: 29136838  
 Conc: 252.45 ug/ml



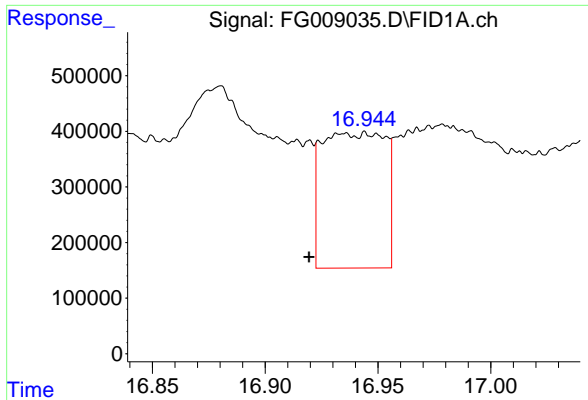
#10 N-TETRACOSANE

R.T.: 14.951 min  
 Delta R.T.: 0.008 min  
 Response: 8062595  
 Conc: 61.04 ug/ml



#11 N-HEXACOSANE

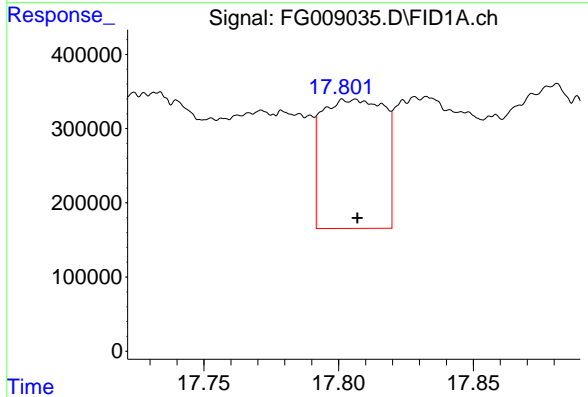
R.T.: 15.978 min  
 Delta R.T.: 0.011 min  
 Response: 20137912  
 Conc: 158.17 ug/ml



#12 N-OCTACOSANE

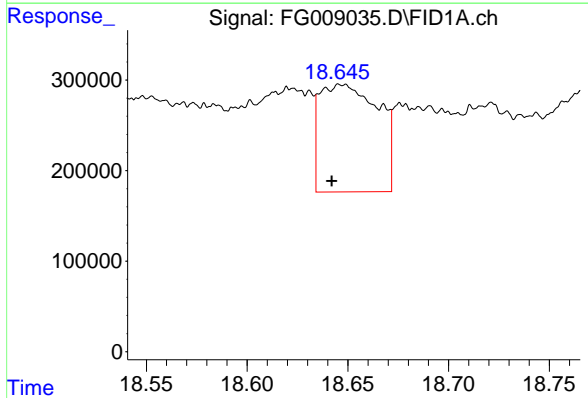
R.T.: 16.935 min  
 Delta R.T.: 0.015 min  
 Response: 4755393  
 Conc: 38.68 ug/ml

Instrument :  
 FID\_G  
 ClientSampleId :



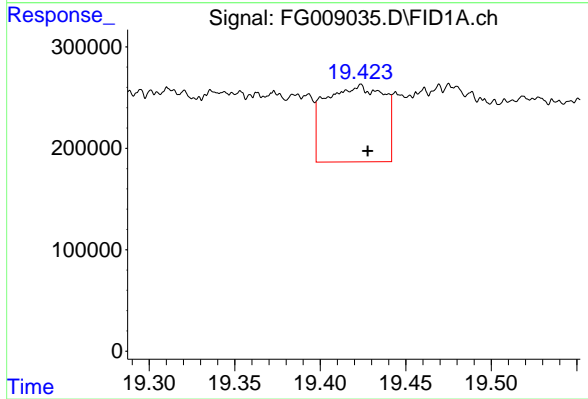
#13 N-TRIACONTANE

R.T.: 17.806 min  
 Delta R.T.: 0.000 min  
 Response: 2806774  
 Conc: 23.97 ug/ml



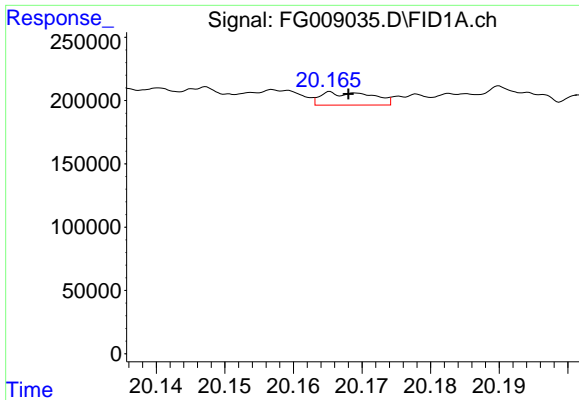
#14 N-DOTRIACONTANE

R.T.: 18.647 min  
 Delta R.T.: 0.005 min  
 Response: 2399236  
 Conc: 22.04 ug/ml



#15 N-TETRATRIACONTANE

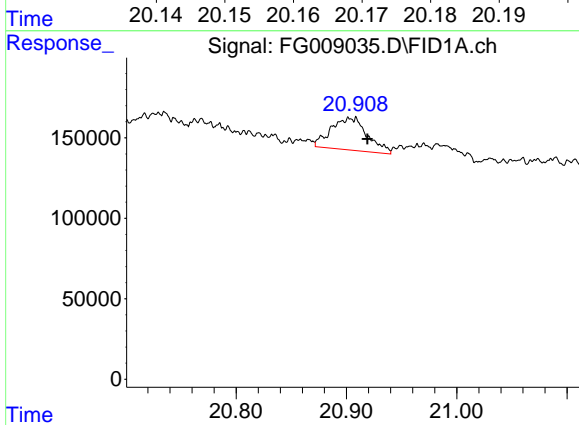
R.T.: 19.424 min  
 Delta R.T.: -0.004 min  
 Response: 1800990  
 Conc: 17.73 ug/ml



#16 N-HEXATRIACONTANE

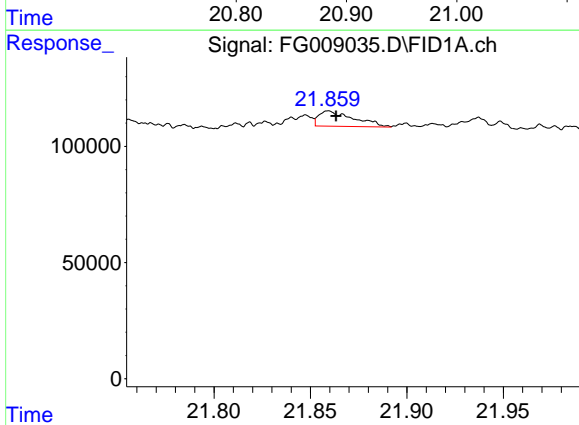
R.T.: 20.169 min  
Delta R.T.: 0.000 min  
Response: 53084  
Conc: 0.56 ug/ml

Instrument :  
FID\_G  
ClientSampleId :



#17 N-OCTATRIACONTANE

R.T.: 20.909 min  
Delta R.T.: -0.010 min  
Response: 456738  
Conc: 5.16 ug/ml



#18 N-TETRACONTANE

R.T.: 21.859 min  
Delta R.T.: -0.004 min  
Response: 83148  
Conc: 0.94 ug/ml