

Data Path : Z:\pestpcbsrv\HPCHEM1\FID\_G\Data\FG111924AL\  
 Data File : FG014868.D  
 Signal(s) : FID1A.ch  
 Acq On : 19 Nov 2024 13:12  
 Operator : YP\AJ  
 Sample : P4860-01  
 Misc :  
 ALS Vial : 26 Sample Multiplier: 1

**Instrument :**  
 FID\_G  
**ClientSampleId :**  
 DUP-01

Integration File: autoint1.e  
 Quant Time: Nov 20 00:36:16 2024  
 Quant Method : Z:\pestpcbsrv\HPCHEM1\FID\_G\Method\Aliphatic EPH 111424.M  
 Quant Title : GC Extractables  
 QLast Update : Thu Nov 14 16:33:02 2024  
 Response via : Initial Calibration  
 Integrator: ChemStation

Volume Inj. : 1 ul  
 Signal Phase : Rxi-1ms  
 Signal Info : 20M x 0.18mm x 0.18um

Compound	R.T.	Response	Conc Units
-----			
System Monitoring Compounds			
12) S 1-chlorooctadecane (S...	13.385	3804504	34.235 ug/ml
Spiked Amount	50.000	Recovery	= 68.47%

Target Compounds

(f)=RT Delta > 1/2 Window

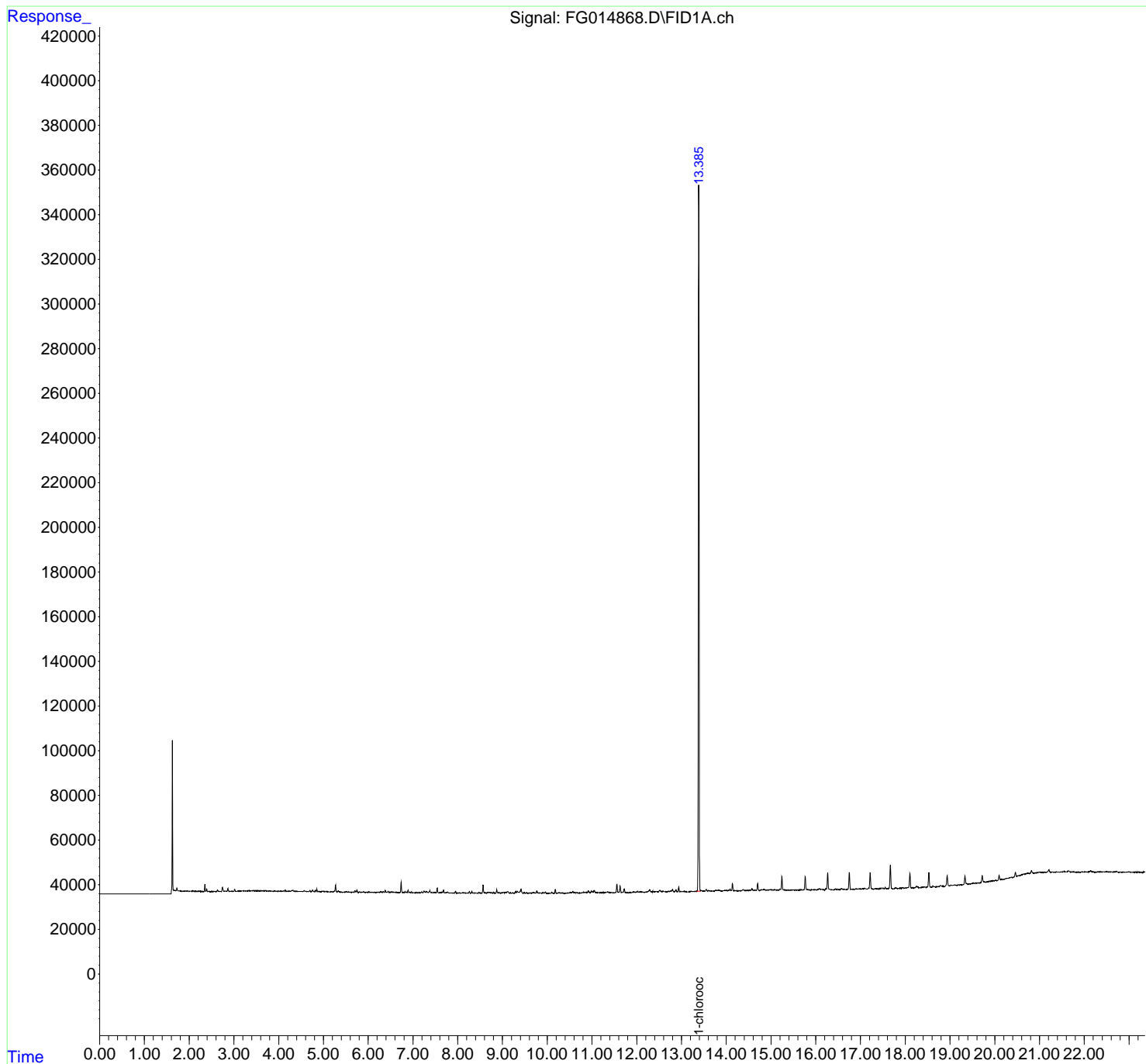
(m)=manual int.

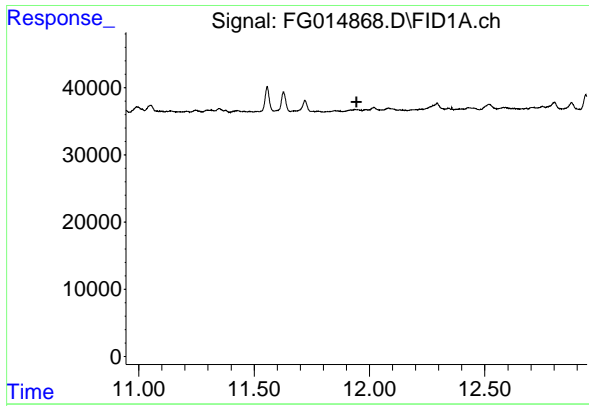
Data Path : Z:\pestpcbsrv\HPCHEM1\FID\_G\Data\FG11924AL\  
Data File : FG014868.D  
Signal(s) : FID1A.ch  
Acq On : 19 Nov 2024 13:12  
Operator : YP\AJ  
Sample : P4860-01  
Misc :  
ALS Vial : 26 Sample Multiplier: 1

Instrument :  
FID\_G  
ClientSampleId :  
DUP-01

Integration File: autoint1.e  
Quant Time: Nov 20 00:36:16 2024  
Quant Method : Z:\pestpcbsrv\HPCHEM1\FID\_G\Method\Aliphatic EPH 111424.M  
Quant Title : GC Extractables  
QLast Update : Thu Nov 14 16:33:02 2024  
Response via : Initial Calibration  
Integrator: ChemStation

Volume Inj. : 1 ul  
Signal Phase : Rxi-1ms  
Signal Info : 20M x 0.18mm x 0.18um

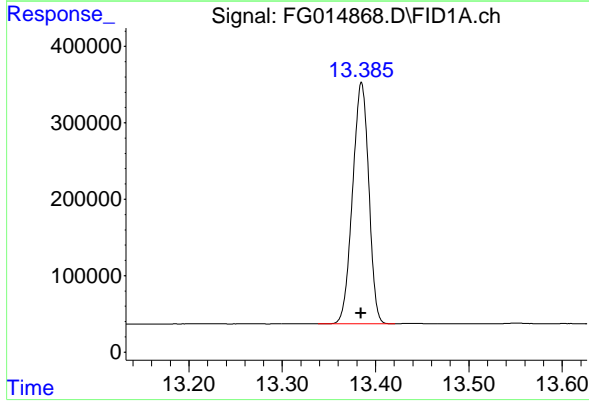




#9 ortho-Terphenyl (SURR)

R.T.: 0.000 min  
 Exp R.T.: 11.944 min  
 Response: 0  
 Conc: N.D.

Instrument : FID\_G  
 ClientSampleId : DUP-01



#12 1-chlorooctadecane (SURR)

R.T.: 13.385 min  
 Delta R.T.: 0.000 min  
 Response: 3804504  
 Conc: 34.24 ug/ml