

Data Path : Z:\pestpcbsrv\HPCHEM1\FID\_G\Data\FG121120\  
 Data File : FG007444.D  
 Signal(s) : FID1A.ch  
 Acq On : 11 Dec 2020 18:12  
 Operator : DD\AJ  
 Sample : L5042-08  
 Misc :  
 ALS Vial : 8 Sample Multiplier: 1

Instrument :  
 FID\_G  
 ClientSampleId :

Integration File: autoint1.e  
 Quant Time: Dec 11 23:21:25 2020  
 Quant Method : Z:\pestpcbsrv\HPCHEM1\FID\_G\Method\FG120220.M  
 Quant Title :  
 QLast Update : Thu Dec 03 08:50:10 2020  
 Response via : Initial Calibration  
 Integrator: ChemStation

Volume Inj. : 1uL  
 Signal Phase : Rxi-1ms  
 Signal Info : 20mx0.18mmx0.18um

Compound	R.T.	Response	Conc Units
-----			
System Monitoring Compounds			
9) S TETRACOSANE-d50 (SURR...	14.727	2967903	23.146 ug/ml
Target Compounds			
4) N-TETRADECANE	8.321f	697959	4.606 ug/ml
14) N-DOTRIACONTANE	18.621	142929	1.247 ug/ml
-----			

(f)=RT Delta > 1/2 Window

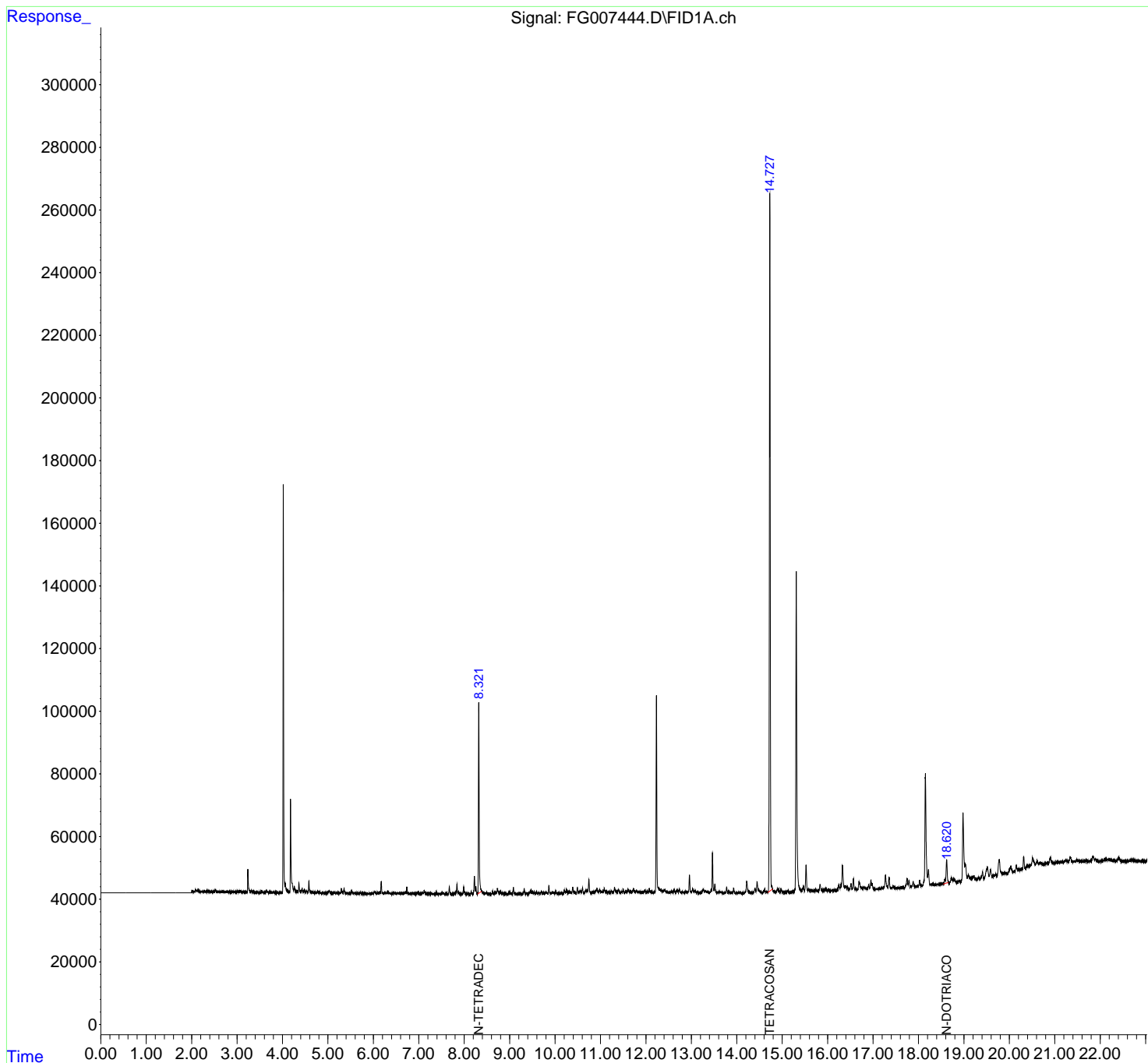
(m)=manual int.

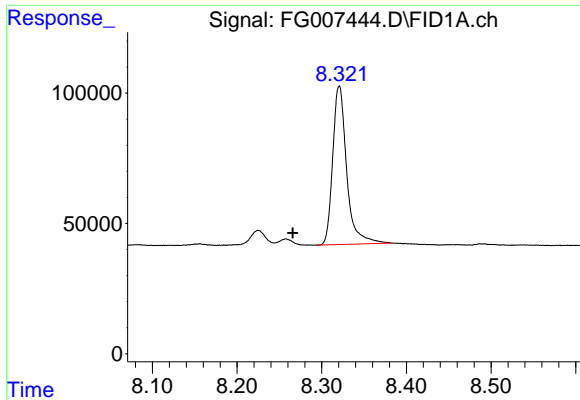
Data Path : Z:\pestpcbsrv\HPCHEM1\FID\_G\Data\FG121120\  
 Data File : FG007444.D  
 Signal(s) : FID1A.ch  
 Acq On : 11 Dec 2020 18:12  
 Operator : DD\AJ  
 Sample : L5042-08  
 Misc :  
 ALS Vial : 8 Sample Multiplier: 1

Instrument :  
 FID\_G  
 ClientSampleId :

Integration File: autoint1.e  
 Quant Time: Dec 11 23:21:25 2020  
 Quant Method : Z:\pestpcbsrv\HPCHEM1\FID\_G\Method\FG120220.M  
 Quant Title :  
 QLast Update : Thu Dec 03 08:50:10 2020  
 Response via : Initial Calibration  
 Integrator: ChemStation

Volume Inj. : 1uL  
 Signal Phase : Rxi-1ms  
 Signal Info : 20mx0.18mmx0.18um

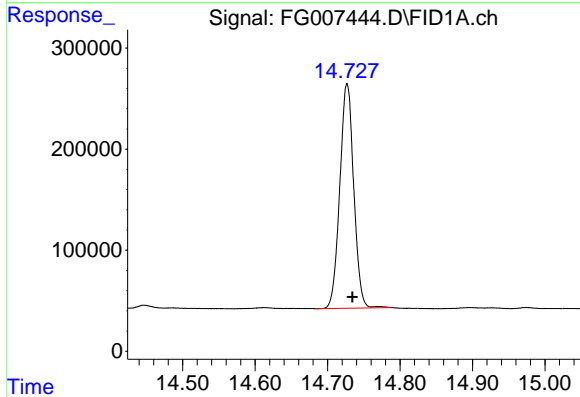




#4 N-TETRADECANE

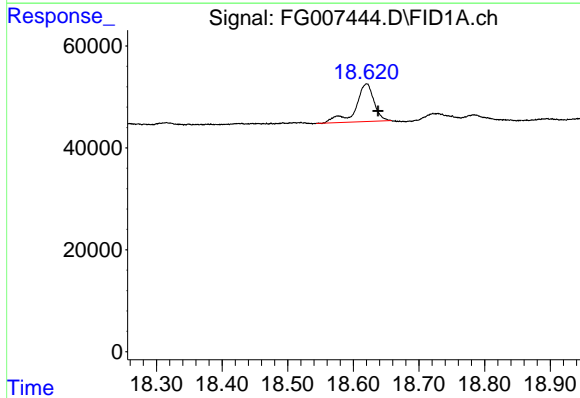
R.T.: 8.321 min  
 Delta R.T.: 0.055 min  
 Response: 697959  
 Conc: 4.61 ug/ml

Instrument :  
 FID\_G  
 ClientSampleId :



#9 TETRACOSANE-d50 (SURROGATE)

R.T.: 14.727 min  
 Delta R.T.: -0.007 min  
 Response: 2967903  
 Conc: 23.15 ug/ml



#14 N-DOTRIACONTANE

R.T.: 18.621 min  
 Delta R.T.: -0.017 min  
 Response: 142929  
 Conc: 1.25 ug/ml