

Data Path : Z:\pestpcbsrv\HPCHEM1\FID_G\Data\FG121124\
Data File : FG014961.D
Signal(s) : FID1A.ch
Acq On : 11 Dec 2024 09:50
Operator : YP\AJ
Sample : MECL2
Misc :
ALS Vial : 1 Sample Multiplier: 1

Instrument :
FID_G
ClientSampleId :

Integration File: autoint1.e
Quant Time: Dec 11 23:15:39 2024
Quant Method : Z:\pestpcbsrv\HPCHEM1\FID_G\Method\FG112024.M
Quant Title :
QLast Update : Thu Nov 21 02:41:43 2024
Response via : Initial Calibration
Integrator: ChemStation

Volume Inj. : 1uL
Signal Phase : Rxi-1ms
Signal Info : 20mx0.18mmx0.18um

Compound	R.T.	Response	Conc Units
----------	------	----------	------------

System Monitoring Compounds

Target Compounds

(f)=RT Delta > 1/2 Window

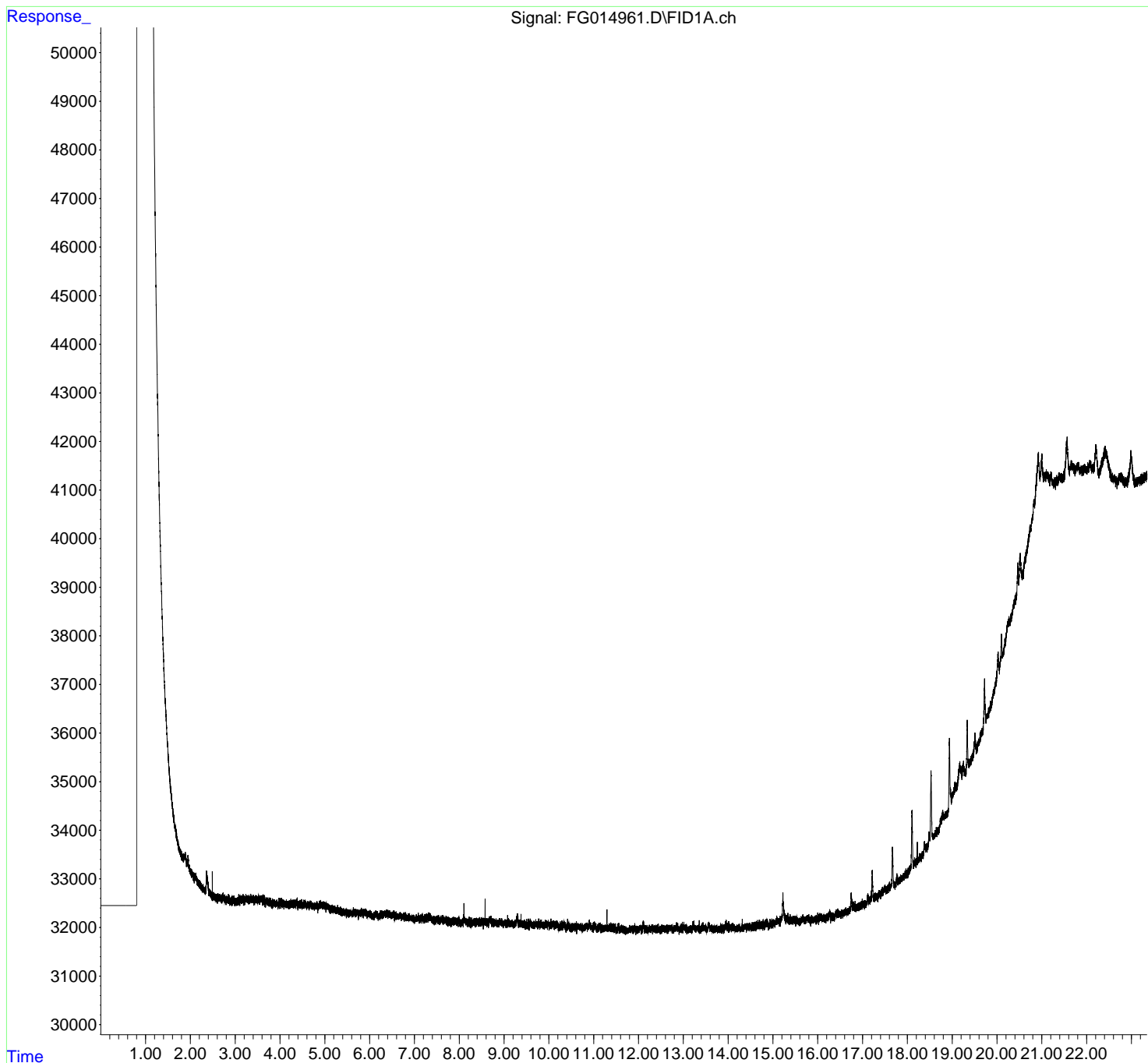
(m)=manual int.

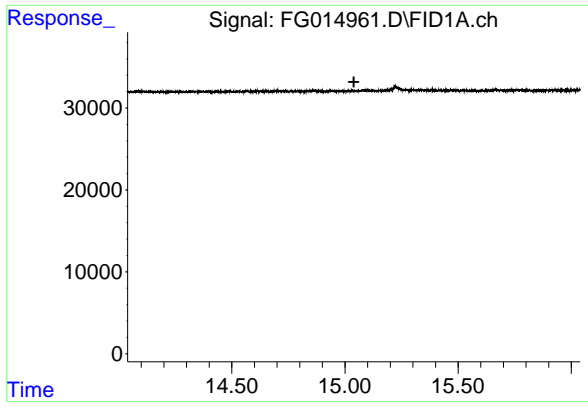
Data Path : Z:\pestpcbsrv\HPCHEM1\FID_G\Data\FG121124\
 Data File : FG014961.D
 Signal(s) : FID1A.ch
 Acq On : 11 Dec 2024 09:50
 Operator : YP\AJ
 Sample : MECL2
 Misc :
 ALS Vial : 1 Sample Multiplier: 1

Instrument :
 FID_G
 ClientSampleId :

Integration File: autoint1.e
 Quant Time: Dec 11 23:15:39 2024
 Quant Method : Z:\pestpcbsrv\HPCHEM1\FID_G\Method\FG112024.M
 Quant Title :
 QLast Update : Thu Nov 21 02:41:43 2024
 Response via : Initial Calibration
 Integrator: ChemStation

Volume Inj. : 1uL
 Signal Phase : Rxi-1ms
 Signal Info : 20mx0.18mmx0.18um





#9 TETRACOSANE-d50 (SURROGATE)

R.T.: 0.000 min
Exp R.T.: 15.039 min
Response: 0
Conc: N.D.

Instrument : FID_G
ClientSampleId :