

Data Path : Z:\pestpcbsrv\HPCHEM1\FID_G\Data\FG122024AR\
 Data File : FG015008.D
 Signal(s) : FID1A.ch
 Acq On : 20 Dec 2024 15:50
 Operator : YP\AJ
 Sample : 10 PPM AROMATIC HC STD4
 Misc :
 ALS Vial : 64 Sample Multiplier: 1

Instrument :
 FID_G
 ClientSampleId :
 10 PPM AROMATIC HC STD4

Integration File: autoint1.e
 Quant Time: Dec 20 16:09:37 2024
 Quant Method : Z:\pestpcbsrv\HPCHEM1\FID_G\Method\Aromatic EPH 122024.M
 Quant Title : GC Extractables
 QLast Update : Fri Dec 20 16:09:22 2024
 Response via : Initial Calibration
 Integrator: ChemStation

Volume Inj. : 1 µl
 Signal Phase : Rxi-1ms
 Signal Info : 20M x 0.18mm x 0.18µm

Compound	R.T.	Response	Conc Units

System Monitoring Compounds			
4) S 2-Bromonaphthalene (S...	7.999	1403858	11.051 ug/ml
Spiked Amount 50.000		Recovery =	22.10%
6) S 2-Fluorobiphenyl (SURR)	8.877	971435	11.049 ug/ml
Spiked Amount 50.000 Range 0 - 131		Recovery =	22.10%
11) S ortho-Terphenyl (SURR)	11.955	1646459	11.064 ug/ml
Spiked Amount 50.000		Recovery =	22.13%
Target Compounds			
1) T 1,2,3-Trimethylbenzen...	4.589	1474164	11.094 ug/ml
2) T Naphthalene (C11.7)	6.268	1551931	11.069 ug/ml
3) T 2-Methylnaphthalene (...)	7.369	1535480	11.036 ug/ml
5) T Acenaphthylene (C15.06)	8.676	1602817	11.066 ug/ml
7) T Acenaphthene (C15.5)	8.977	1562641	11.059 ug/ml
8) T Flouorene (C16.55)	9.769	1610681	11.050 ug/ml
9) T Phenanthrene (C19.36)	11.181	1610789	11.042 ug/ml
10) T Anthracene (C19.43)	11.256	1573931	11.091 ug/ml
12) T Fluoranthene (C21.85)	13.008	1631549	11.017 ug/ml
13) T Pyrene (C20.8)	13.307	1625645	11.011 ug/ml
14) T Benzo[a]anthracene (C...	15.194	1601636	10.955 ug/ml
15) T Chrysene (C27.41)	15.236	1595890	10.998 ug/ml
16) T benzo[b]fluoranthene ...	16.755	1577871	10.903 ug/ml
17) T Bnezo[k]fluoranthene ...	16.787	1586416	11.091 ug/ml
18) T Benzo[a]pyrene (C31.34)	17.137	1503096	10.998 ug/ml
19) T Indeno[1,2,3-cd]pyren...	18.509	1397220	10.801 ug/ml
20) T Dibenz[a,h]anthracene...	18.551	1553753	11.346 ug/ml
21) T Benzo[g,h,i]perylene ...	18.765	1471491	10.972 ug/ml

(f)=RT Delta > 1/2 Window

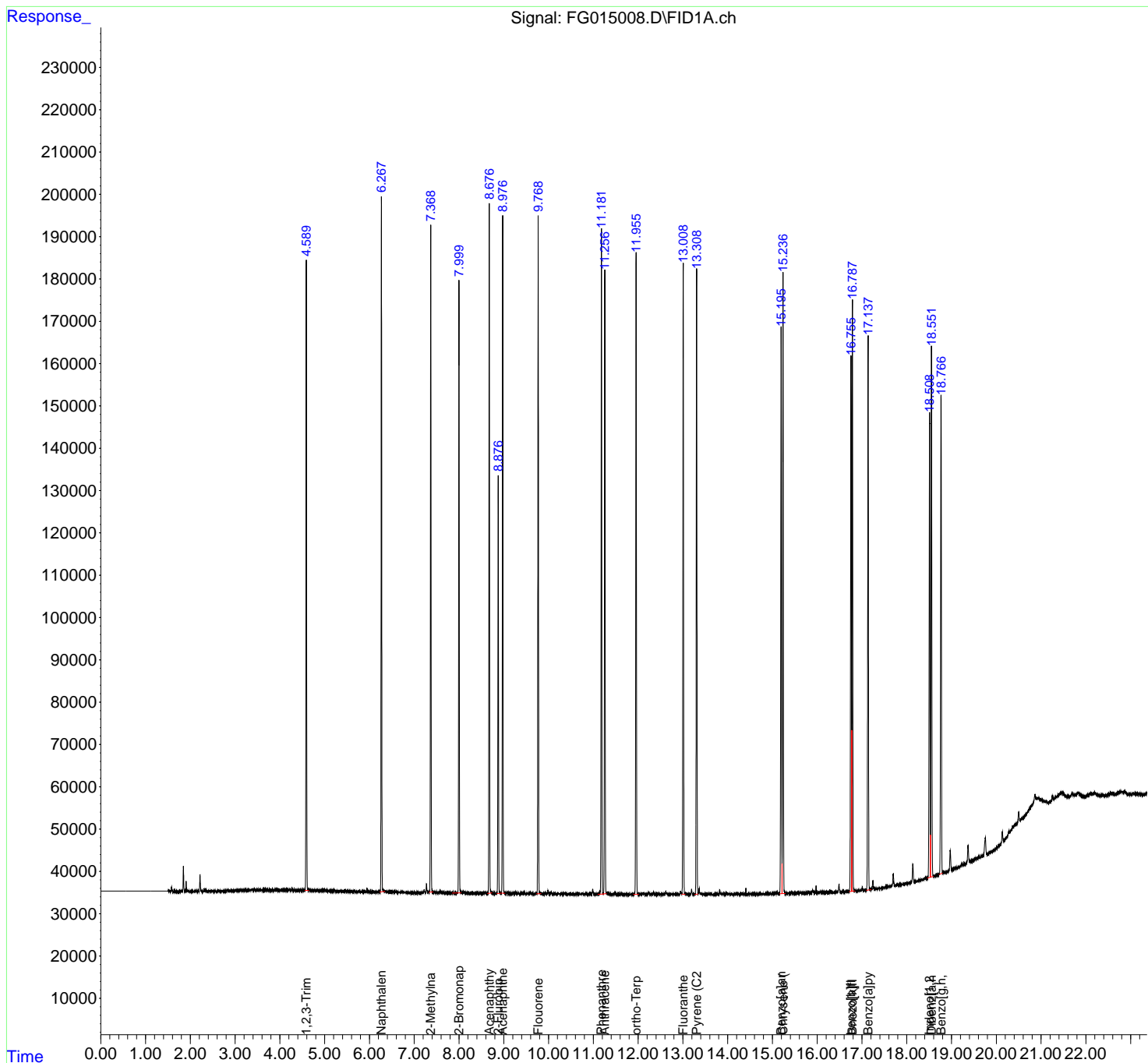
(m)=manual int.

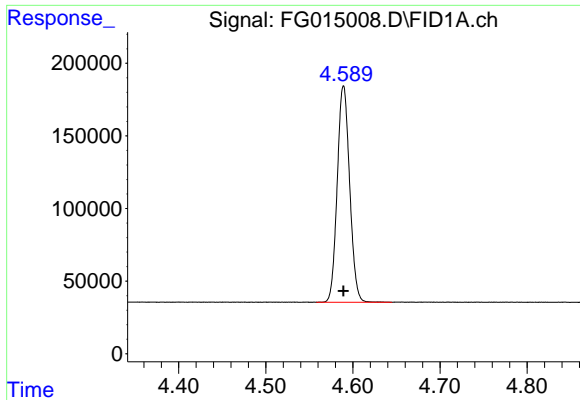
Data Path : Z:\pestpcbsrv\HPCHEM1\FID_G\Data\FG122024AR\
 Data File : FG015008.D
 Signal(s) : FID1A.ch
 Acq On : 20 Dec 2024 15:50
 Operator : YP\AJ
 Sample : 10 PPM AROMATIC HC STD4
 Misc :
 ALS Vial : 64 Sample Multiplier: 1

Instrument :
 FID_G
 ClientSampleId :
 10 PPM AROMATIC HC STD4

Integration File: autoint1.e
 Quant Time: Dec 20 16:09:37 2024
 Quant Method : Z:\pestpcbsrv\HPCHEM1\FID_G\Method\Aromatic EPH 122024.M
 Quant Title : GC Extractables
 QLast Update : Fri Dec 20 16:09:22 2024
 Response via : Initial Calibration
 Integrator: ChemStation

Volume Inj. : 1 µl
 Signal Phase : Rxi-1ms
 Signal Info : 20M x 0.18mm x 0.18µm

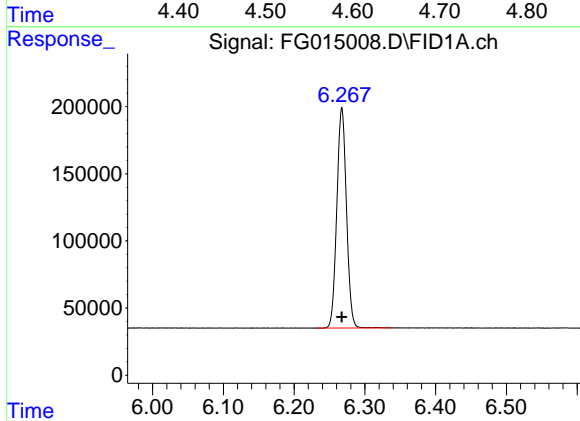




#1 1,2,3-Trimethylbenzene (C10.1)

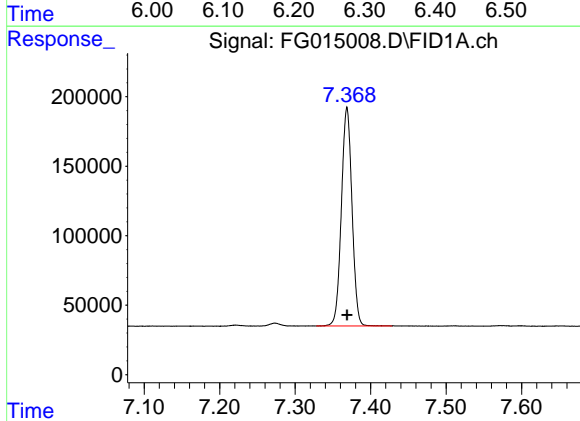
R.T.: 4.589 min
 Delta R.T.: 0.000 min
 Response: 1474164
 Conc: 11.09 ug/ml

Instrument : FID_G
 ClientSampleId : 10 PPM AROMATIC HC STD4



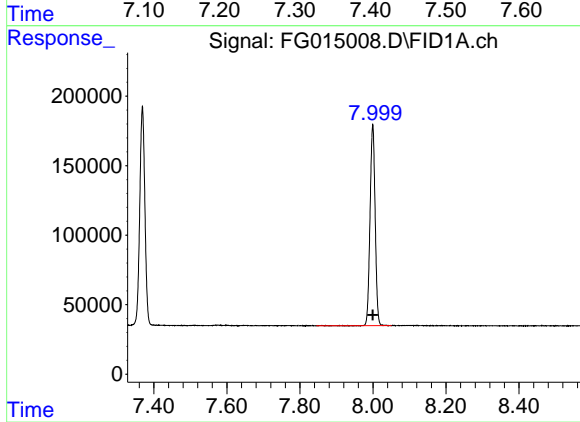
#2 Naphthalene (C11.7)

R.T.: 6.268 min
 Delta R.T.: 0.000 min
 Response: 1551931
 Conc: 11.07 ug/ml



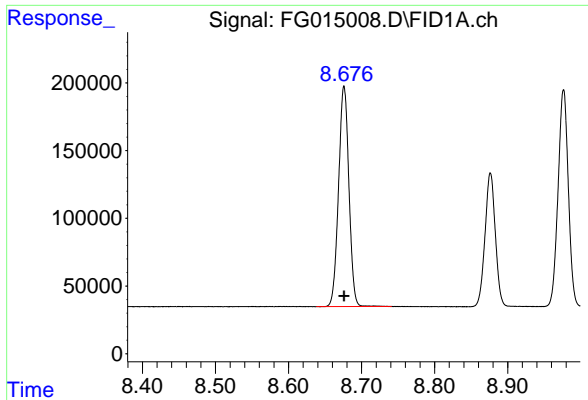
#3 2-Methylnaphthalene (C12.89)

R.T.: 7.369 min
 Delta R.T.: 0.000 min
 Response: 1535480
 Conc: 11.04 ug/ml



#4 2-Bromonaphthalene (SURR)

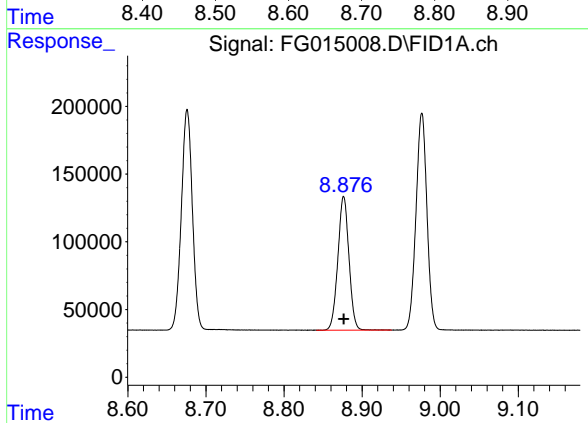
R.T.: 7.999 min
 Delta R.T.: 0.000 min
 Response: 1403858
 Conc: 11.05 ug/ml



#5 Acenaphthylene (C15.06)

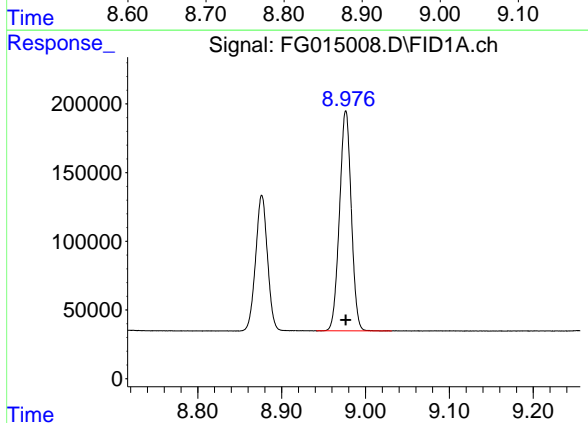
R.T.: 8.676 min
 Delta R.T.: 0.000 min
 Response: 1602817
 Conc: 11.07 ug/ml

Instrument : FID_G
 ClientSampleId : 10 PPM AROMATIC HC STD4



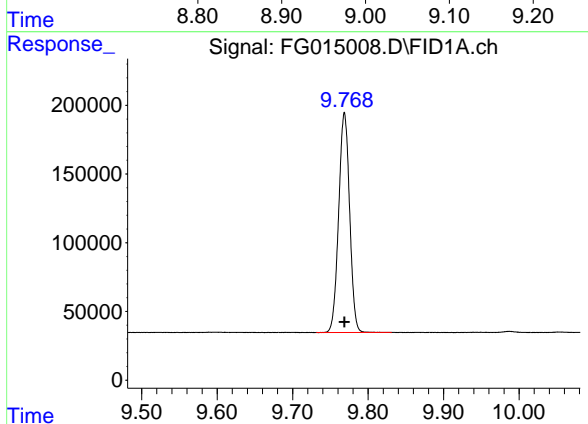
#6 2-Fluorobiphenyl (SURR)

R.T.: 8.877 min
 Delta R.T.: 0.000 min
 Response: 971435
 Conc: 11.05 ug/ml



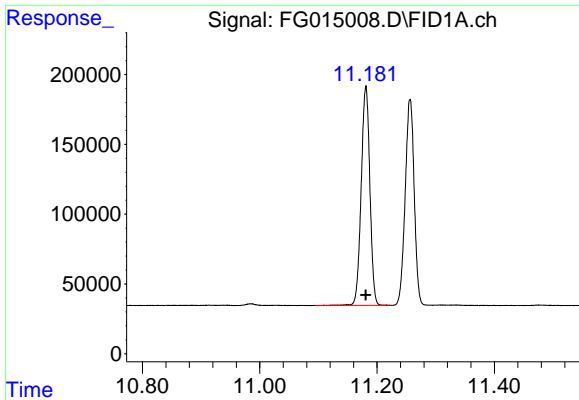
#7 Acenaphthene (C15.5)

R.T.: 8.977 min
 Delta R.T.: 0.000 min
 Response: 1562641
 Conc: 11.06 ug/ml



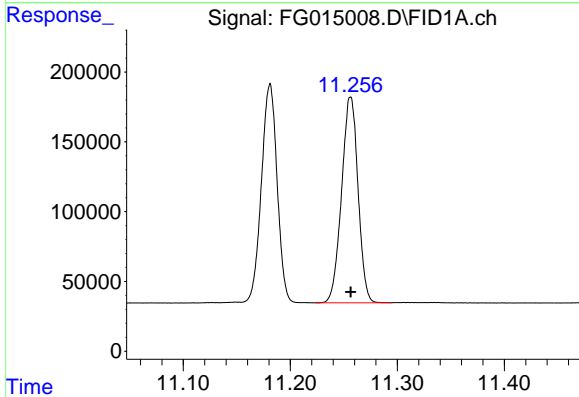
#8 Fluorene (C16.55)

R.T.: 9.769 min
 Delta R.T.: 0.000 min
 Response: 1610681
 Conc: 11.05 ug/ml

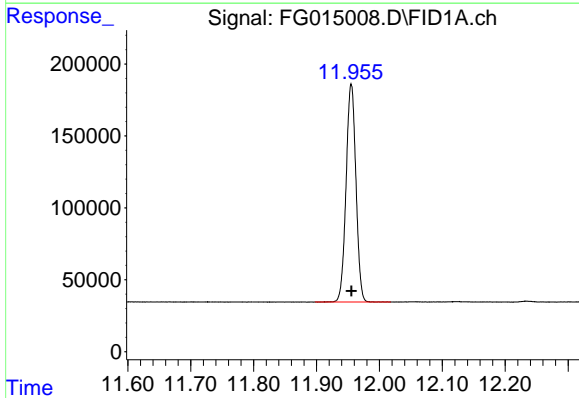


#9 Phenanthrene (C19.36)
 R.T.: 11.181 min
 Delta R.T.: 0.000 min
 Response: 1610789
 Conc: 11.04 ug/ml

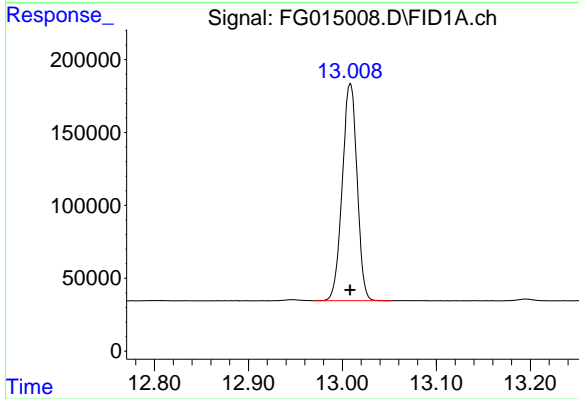
Instrument : FID_G
 ClientSampleId : 10 PPM AROMATIC HC STD4



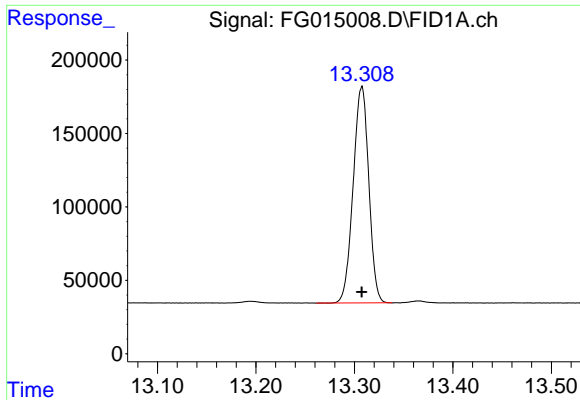
#10 Anthracene (C19.43)
 R.T.: 11.256 min
 Delta R.T.: 0.000 min
 Response: 1573931
 Conc: 11.09 ug/ml



#11 ortho-Terphenyl (SURR)
 R.T.: 11.955 min
 Delta R.T.: 0.000 min
 Response: 1646459
 Conc: 11.06 ug/ml



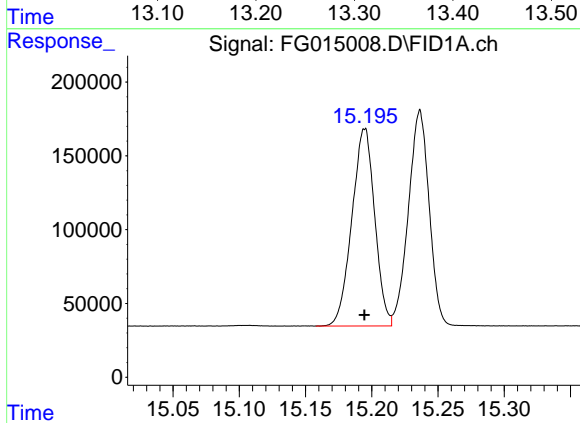
#12 Fluoranthene (C21.85)
 R.T.: 13.008 min
 Delta R.T.: 0.000 min
 Response: 1631549
 Conc: 11.02 ug/ml



#13 Pyrene (C20.8)

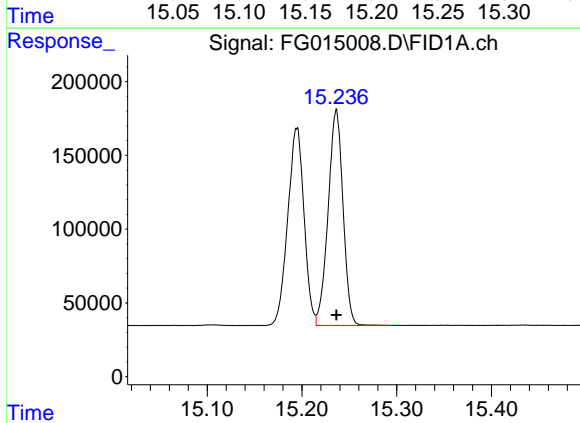
R.T.: 13.307 min
 Delta R.T.: 0.000 min
 Response: 1625645
 Conc: 11.01 ug/ml

Instrument : FID_G
 ClientSampleId : 10 PPM AROMATIC HC STD4



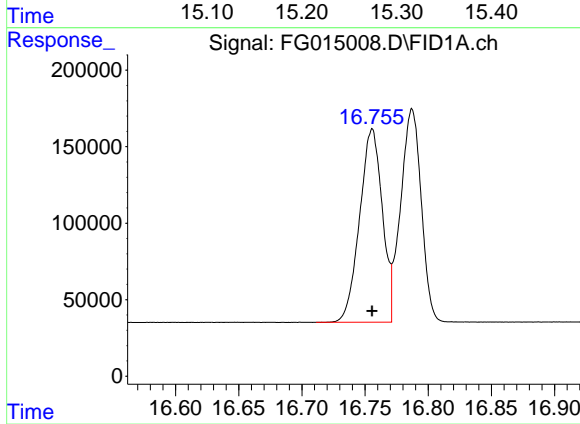
#14 Benzo[a]anthracene (C26.37)

R.T.: 15.194 min
 Delta R.T.: 0.000 min
 Response: 1601636
 Conc: 10.95 ug/ml



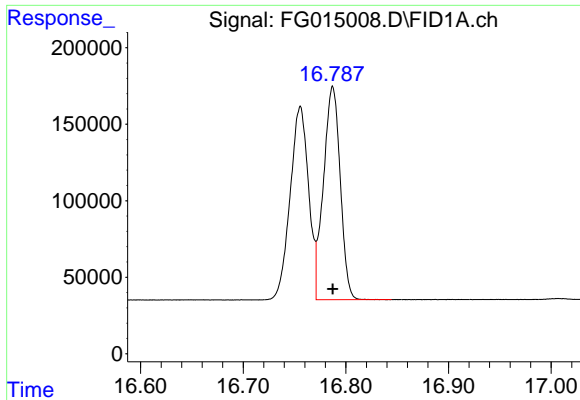
#15 Chrysene (C27.41)

R.T.: 15.236 min
 Delta R.T.: 0.000 min
 Response: 1595890
 Conc: 11.00 ug/ml



#16 benzo[b]fluoranthene (C30.41)

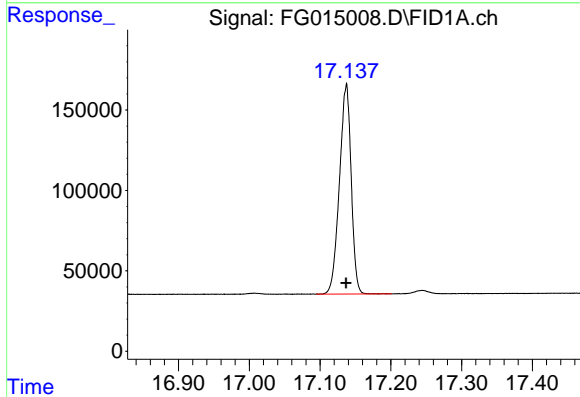
R.T.: 16.755 min
 Delta R.T.: 0.000 min
 Response: 1577871
 Conc: 10.90 ug/ml



#17 Bnezo[k]fluoranthene (C30.14)

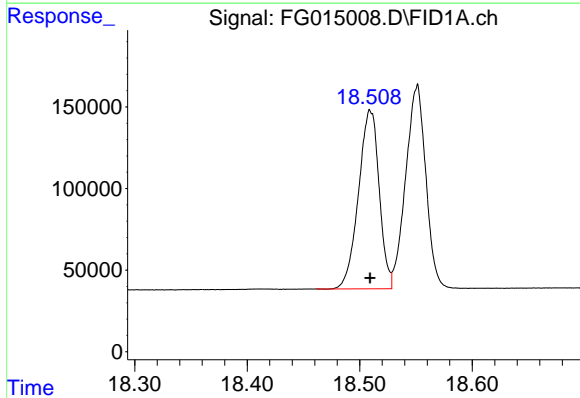
R.T.: 16.787 min
 Delta R.T.: 0.000 min
 Response: 1586416
 Conc: 11.09 ug/ml

Instrument : FID_G
 ClientSampleId : 10 PPM AROMATIC HC STD4



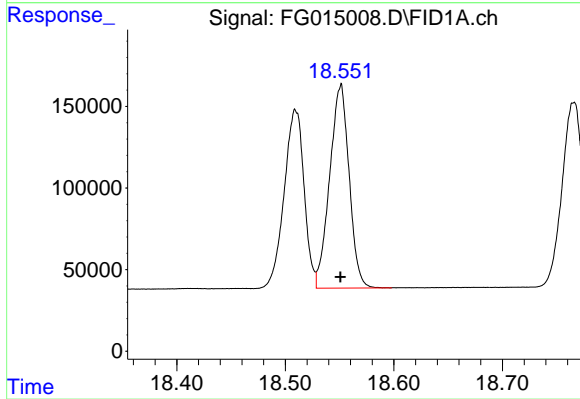
#18 Benzo[a]pyrene (C31.34)

R.T.: 17.137 min
 Delta R.T.: 0.000 min
 Response: 1503096
 Conc: 11.00 ug/ml



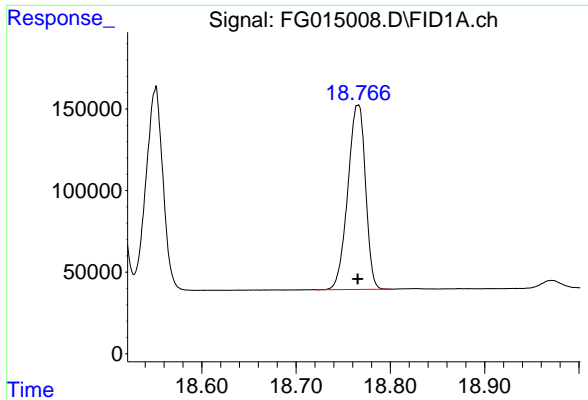
#19 Indeno[1,2,3-cd]pyrene (C35.01)

R.T.: 18.509 min
 Delta R.T.: 0.000 min
 Response: 1397220
 Conc: 10.80 ug/ml



#20 Dibenz[a,h]anthracene (C30.36)

R.T.: 18.551 min
 Delta R.T.: 0.000 min
 Response: 1553753
 Conc: 11.35 ug/ml



#21 Benzo[g,h,i]perylene (C34.01)

R.T.: 18.765 min
Delta R.T.: 0.000 min
Response: 1471491
Conc: 10.97 ug/ml

Instrument :
FID_G
ClientSampleId :
10 PPM AROMATIC HC STD4