

Data Path : P:\HPCHEM1\FID_G\Data\FG040318\
 Data File : FG000696.D
 Signal(s) : FID1A.ch
 Acq On : 03 Apr 2018 22:03
 Operator : UA\AJ
 Sample : J2173-03 20X
 Misc :
 ALS Vial : 20 Sample Multiplier: 1

Integration File: autoint1.e
 Quant Time: Apr 04 04:03:12 2018
 Quant Method : P:\HPCHEM1\FID_G\Method\FG031618.M
 Quant Title :
 QLast Update : Fri Mar 16 13:10:14 2018
 Response via : Initial Calibration
 Integrator: ChemStation

Volume Inj. : 1uL
 Signal Phase : Rxi-1ms
 Signal Info : 20mx0.18mmx0.18um

Compound	R.T.	Response	Conc Units

System Monitoring Compounds			
Target Compounds			
2) N-DECANE	4.338	314676	3.141 ug/ml
3) N-DODECANE	6.265f	627559	5.454 ug/ml
4) N-TETRADECANE	8.064f	120662	0.866 ug/ml
6) N-OCTADECANE	11.189	452318	2.551 ug/ml
10) N-TETRACOSANE	14.743	282497	1.415 ug/ml

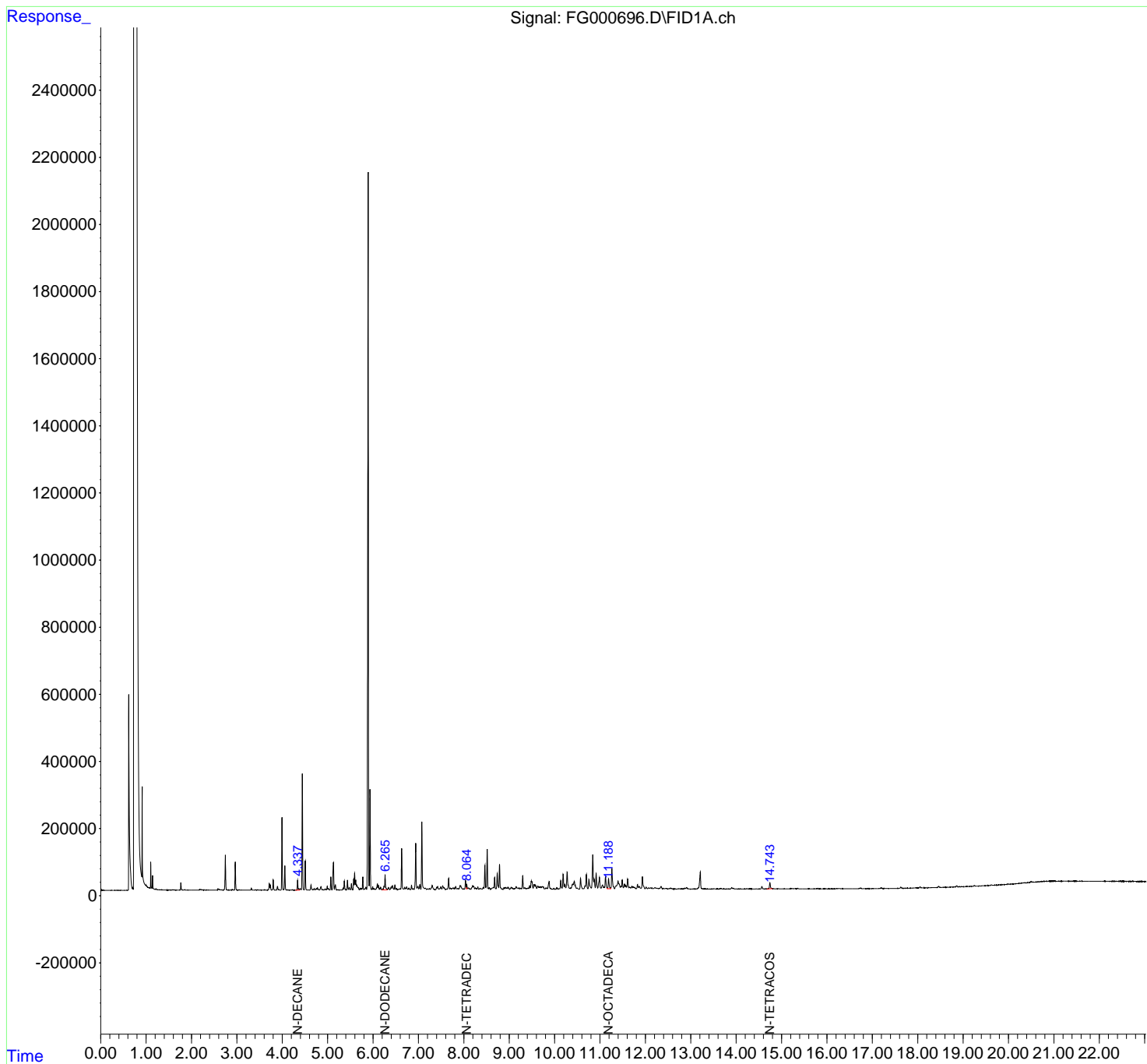
(f)=RT Delta > 1/2 Window

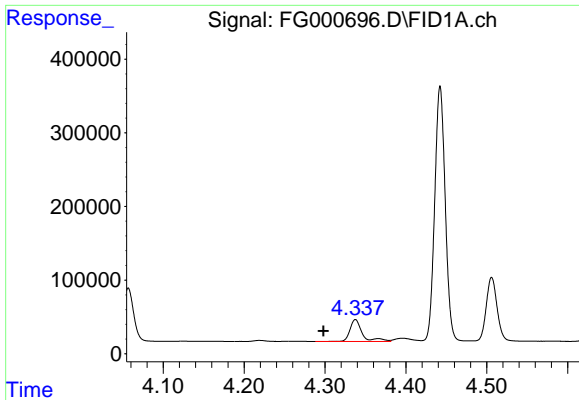
(m)=manual int.

Data Path : P:\HPCHEM1\FID_G\Data\FG040318\
Data File : FG000696.D
Signal(s) : FID1A.ch
Acq On : 03 Apr 2018 22:03
Operator : UA\AJ
Sample : J2173-03 20X
Misc :
ALS Vial : 20 Sample Multiplier: 1

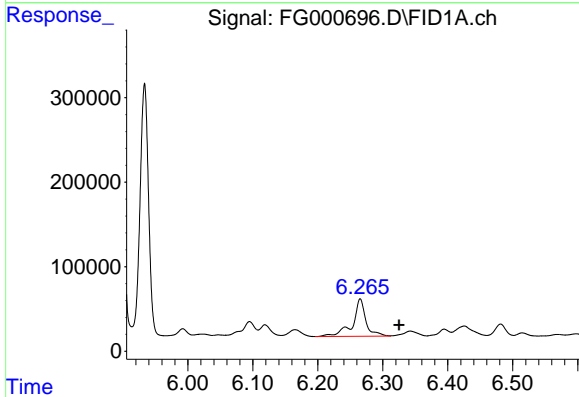
Integration File: autoint1.e
Quant Time: Apr 04 04:03:12 2018
Quant Method : P:\HPCHEM1\FID_G\Method\FG031618.M
Quant Title :
QLast Update : Fri Mar 16 13:10:14 2018
Response via : Initial Calibration
Integrator: ChemStation

Volume Inj. : 1uL
Signal Phase : Rxi-1ms
Signal Info : 20mx0.18mmx0.18um

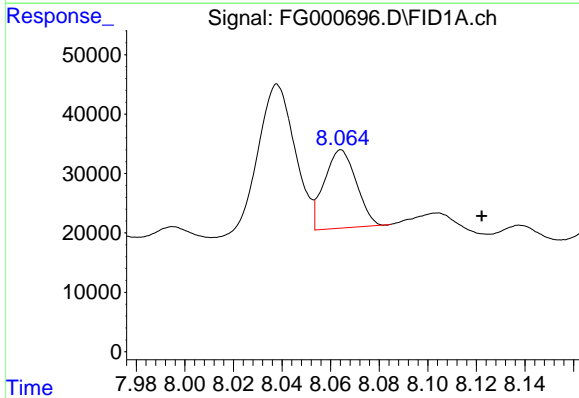




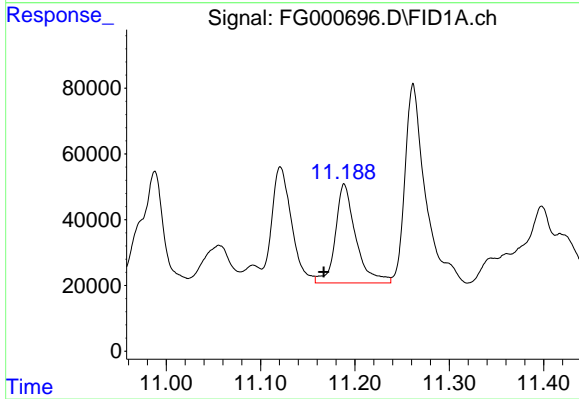
#2 N-DECANE
 R.T.: 4.338 min
 Delta R.T.: 0.040 min
 Response: 314676
 Conc: 3.14 ug/ml



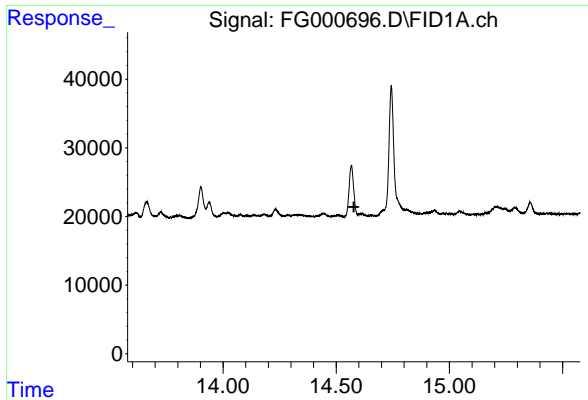
#3 N-DODECANE
 R.T.: 6.265 min
 Delta R.T.: -0.060 min
 Response: 627559
 Conc: 5.45 ug/ml



#4 N-TETRADECANE
 R.T.: 8.064 min
 Delta R.T.: -0.058 min
 Response: 120662
 Conc: 0.87 ug/ml

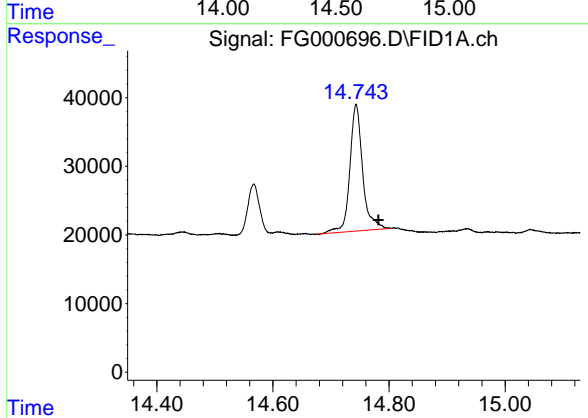


#6 N-OCTADECANE
 R.T.: 11.189 min
 Delta R.T.: 0.022 min
 Response: 452318
 Conc: 2.55 ug/ml



#9 TETRACOSANE-d50 (SURROGATE)

R.T.: 0.000 min
Exp R.T. : 14.578 min
Response: 0
Conc: N.D.



#10 N-TETRACOSANE

R.T.: 14.743 min
Delta R.T.: -0.038 min
Response: 282497
Conc: 1.42 ug/ml