

Data Path : Z:\pestpcbsrv\HPCHEM1\ECD_S\Data\PS010219\
 Data File : PS002746.D
 Signal(s) : Signal #1: ECD1A.ch Signal #2: ECD2B.ch
 Acq On : 03 Jan 2019 00:45
 Operator : EI\SJ
 Sample : HSTDCCC750
 Misc :
 ALS Vial : 3 Sample Multiplier: 1

Instrument :
 ECD_S
 ClientSampleId :

Integration File signal 1: autoint1.e
 Integration File signal 2: autoint2.e
 Quant Time: Jan 03 01:31:38 2019
 Quant Method : Z:\pestpcbsrv\HPCHEM1\ECD_S\Method\PS120618.M
 Quant Title : 8080.M
 QLast Update : Mon Dec 10 06:14:54 2018
 Response via : Initial Calibration
 Integrator: ChemStation

Volume Inj. : 2 µl
 Signal #1 Phase : Rtx-CLPesticides Signal #2 Phase: Rtx-CLPesticides2
 Signal #1 Info : 30M x 0.32mm x0.5 Signal #2 Info : 30M x 0.32mm x 0.25µm

	Compound	RT#1	RT#2	Resp#1	Resp#2	ng/ml	ng/ml

System Monitoring Compounds							
4) S	2,4-DCAA	11.390	10.887	242.8E6	294.5E6	765.029	761.481
Target Compounds							
1) T	Dalapon	2.918	2.365	350.6E6	321.5E6	761.576	706.286
2) T	3,5-DICHL...	9.819	9.043	260.6E6	335.6E6	545.494	698.367 #
3) T	4-Nitroph...	10.996	10.041	94535422	109.2E6	596.669	610.890
5) T	DICAMBA	11.695	11.168	972.9E6	1085.8E6	688.045	761.614
6) T	MCP P	12.034	11.398	11197159	71168024	11.222	76.125 #
7) T	MCPA	12.284	11.774	24268404	110.3E6	16.111	76.708 #
8) T	DICHLORPROP	12.881	12.291	252.3E6	166.1E6	709.449	464.423 #
9) T	2,4-D	13.246	12.767	225.5E6	233.7E6	641.891	551.841
10) T	Pentachlo...	13.616	13.306	3575.8E6	4001.3E6	713.089	760.550
11) T	2,4,5-TP ...	14.489	13.927	1272.7E6	1578.8E6	655.791	751.963
12) T	2,4,5-T	14.895	14.511	1316.3E6	1067.0E6	700.709	623.688
13) T	2,4-DB	15.676	15.173	66478677	74257719	293.940	306.532
14) T	DINOSEB	17.106	15.571	1246.7E6	1138.8E6	856.697	746.203
15) T	Picloram	16.936	16.747	973.0E6	1982.0E6	383.400	720.441 #
16) T	DCPA	17.448	16.840	1728.4E6	1322.8E6	711.265	455.326 #

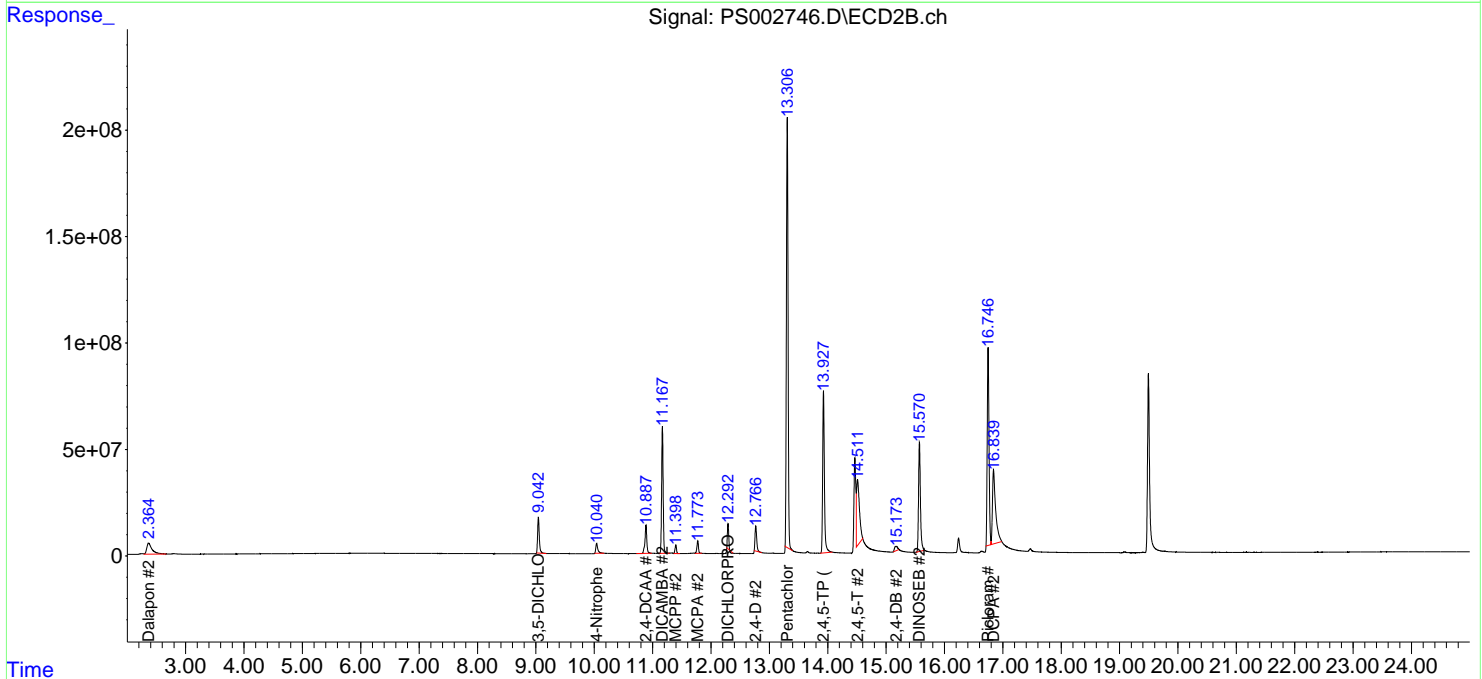
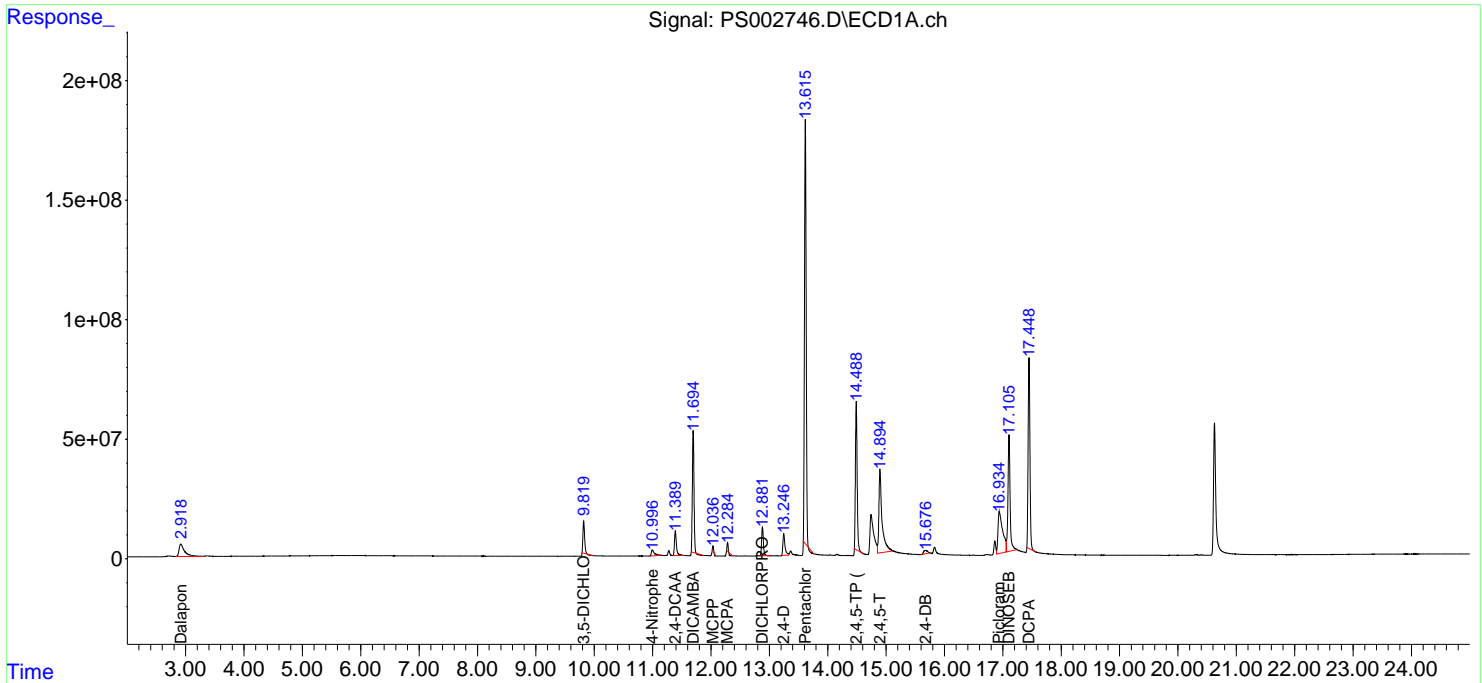
(f)=RT Delta > 1/2 Window (#)=Amounts differ by > 25% (m)=manual int.

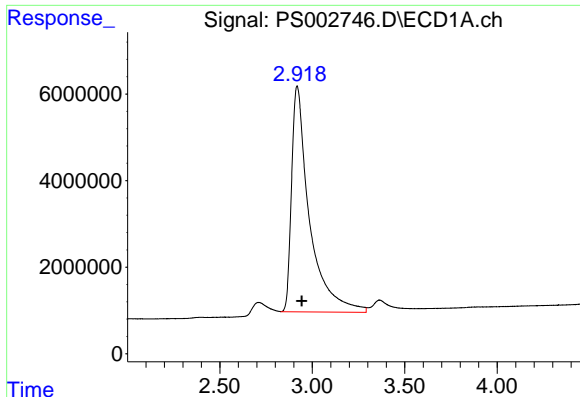
Data Path : Z:\pestpcbsrv\HPCHEM1\ECD_S\Data\PS010219\
 Data File : PS002746.D
 Signal(s) : Signal #1: ECD1A.ch Signal #2: ECD2B.ch
 Acq On : 03 Jan 2019 00:45
 Operator : EI\SJ
 Sample : HSTDCCC750
 Misc :
 ALS Vial : 3 Sample Multiplier: 1

Instrument :
 ECD_S
 ClientSampled :

Integration File signal 1: autoint1.e
 Integration File signal 2: autoint2.e
 Quant Time: Jan 03 01:31:38 2019
 Quant Method : Z:\pestpcbsrv\HPCHEM1\ECD_S\Method\PS120618.M
 Quant Title : 8080.M
 QLast Update : Mon Dec 10 06:14:54 2018
 Response via : Initial Calibration
 Integrator: ChemStation

Volume Inj. : 2 µl
 Signal #1 Phase : Rtx-CLPesticides Signal #2 Phase: Rtx-CLPesticides2
 Signal #1 Info : 30M x 0.32mm x0.5 Signal #2 Info : 30M x 0.32mm x 0.25µm

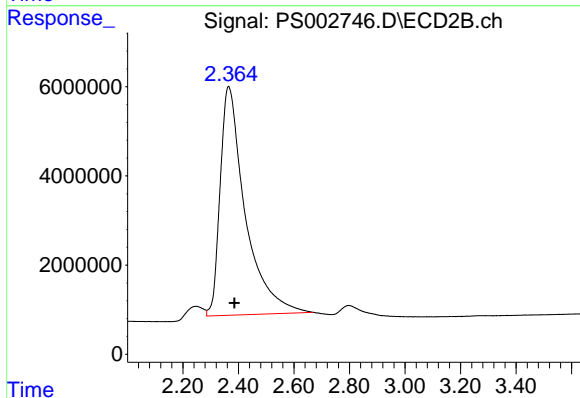




#1 Dalapon

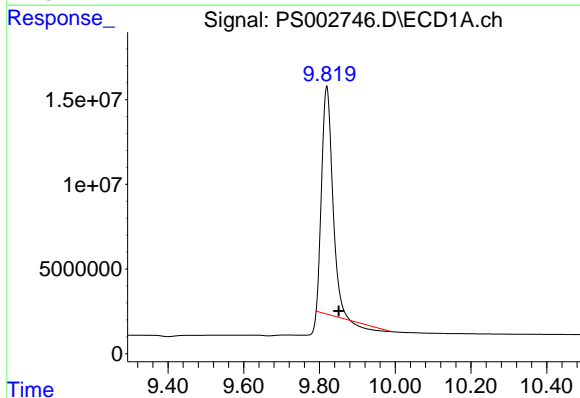
R.T.: 2.918 min
 Delta R.T.: -0.026 min
 Response: 350566056
 Conc: 761.58 ng/ml

Instrument :
 ECD_S
 ClientSampleId :



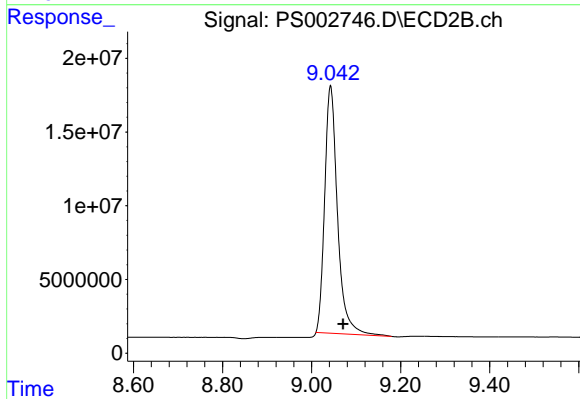
#1 Dalapon

R.T.: 2.365 min
 Delta R.T.: -0.021 min
 Response: 321451563
 Conc: 706.29 ng/ml



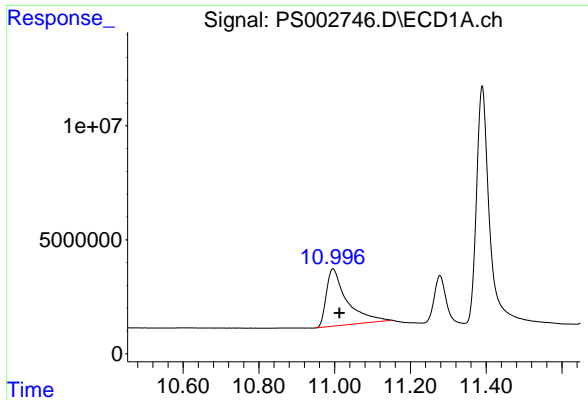
#2 3,5-DICHLOROBENZOIC ACID

R.T.: 9.819 min
 Delta R.T.: -0.032 min
 Response: 260638589
 Conc: 545.49 ng/ml



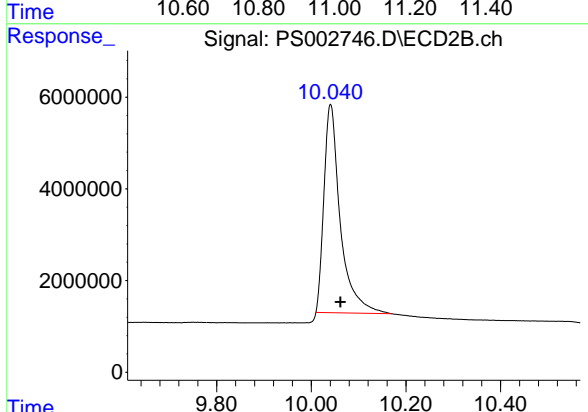
#2 3,5-DICHLOROBENZOIC ACID

R.T.: 9.043 min
 Delta R.T.: -0.028 min
 Response: 335599402
 Conc: 698.37 ng/ml

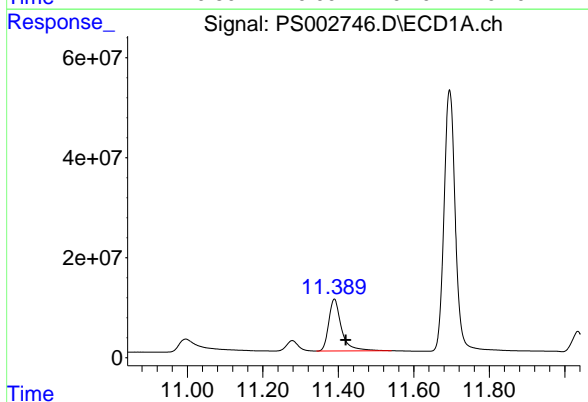


#3 4-Nitrophenol
 R.T.: 10.996 min
 Delta R.T.: -0.017 min
 Response: 94535422
 Conc: 596.67 ng/ml

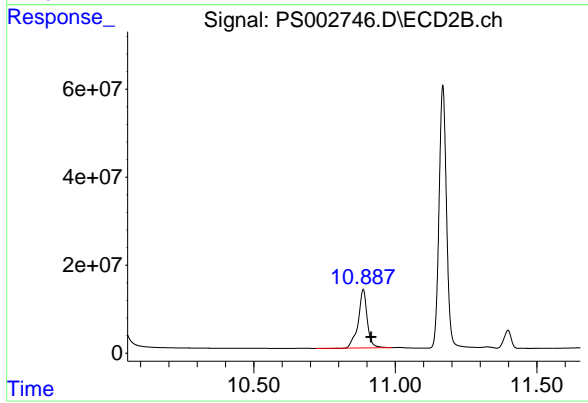
Instrument :
 ECD_S
 ClientSampled :



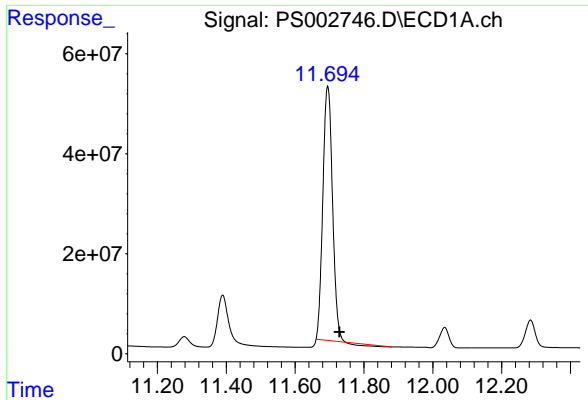
#3 4-Nitrophenol
 R.T.: 10.041 min
 Delta R.T.: -0.021 min
 Response: 109189061
 Conc: 610.89 ng/ml



#4 2,4-DCAA
 R.T.: 11.390 min
 Delta R.T.: -0.030 min
 Response: 242835457
 Conc: 765.03 ng/ml

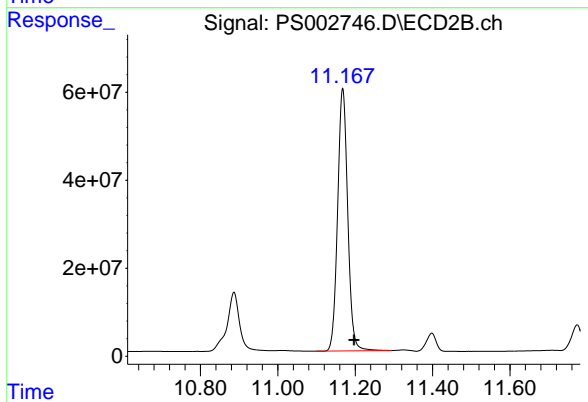


#4 2,4-DCAA
 R.T.: 10.887 min
 Delta R.T.: -0.028 min
 Response: 294517805
 Conc: 761.48 ng/ml

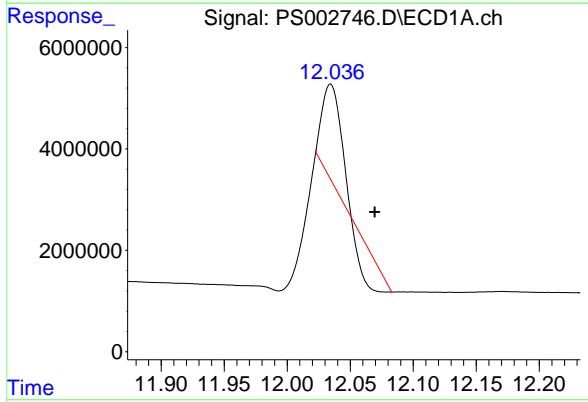


#5 DICAMBA
 R.T.: 11.695 min
 Delta R.T.: -0.034 min
 Response: 972882138
 Conc: 688.05 ng/ml

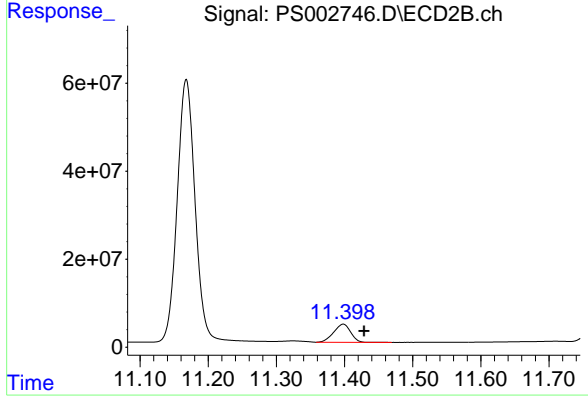
Instrument :
 ECD_S
 ClientSampled :



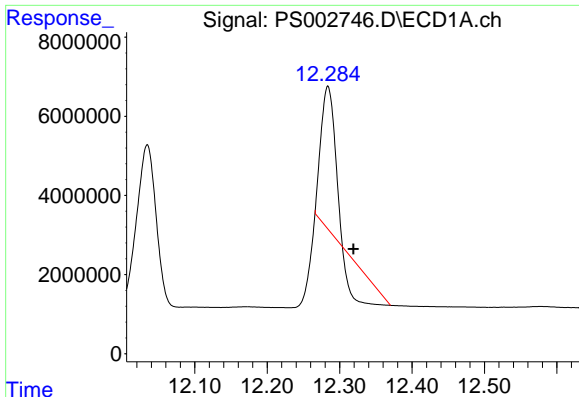
#5 DICAMBA
 R.T.: 11.168 min
 Delta R.T.: -0.030 min
 Response: 1085765405
 Conc: 761.61 ng/ml



#6 MCP
 R.T.: 12.034 min
 Delta R.T.: -0.035 min
 Response: 11197159
 Conc: 11.22 ug/ml



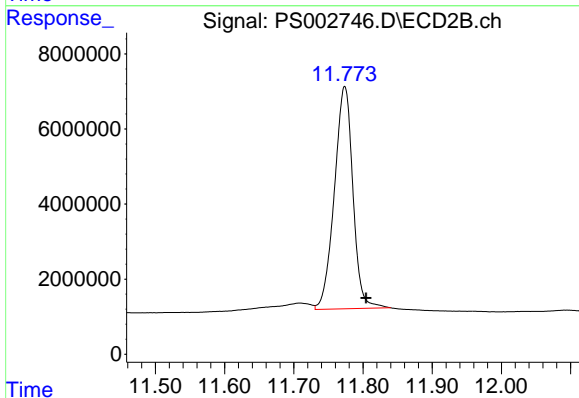
#6 MCP
 R.T.: 11.398 min
 Delta R.T.: -0.031 min
 Response: 71168024
 Conc: 76.12 ug/ml



#7 MCPA

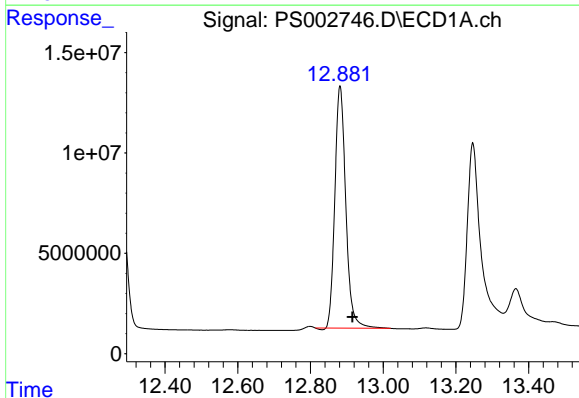
R.T.: 12.284 min
 Delta R.T.: -0.035 min
 Response: 24268404
 Conc: 16.11 ug/ml

Instrument :
 ECD_S
 ClientSampled :



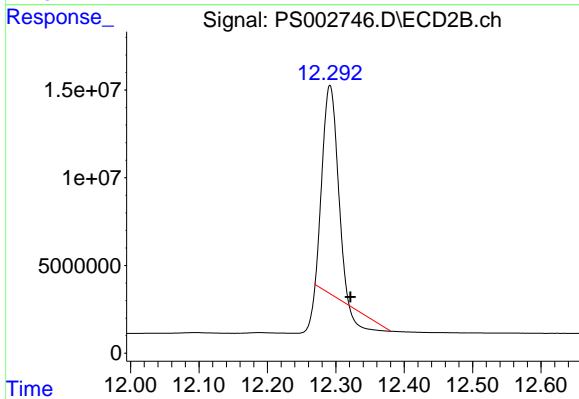
#7 MCPA

R.T.: 11.774 min
 Delta R.T.: -0.031 min
 Response: 110264934
 Conc: 76.71 ug/ml



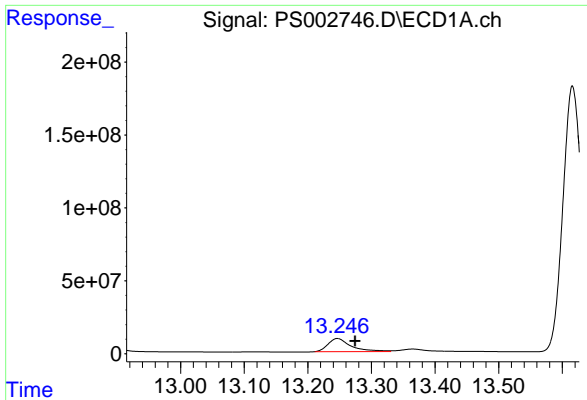
#8 DICHLORPROP

R.T.: 12.881 min
 Delta R.T.: -0.034 min
 Response: 252271073
 Conc: 709.45 ng/ml



#8 DICHLORPROP

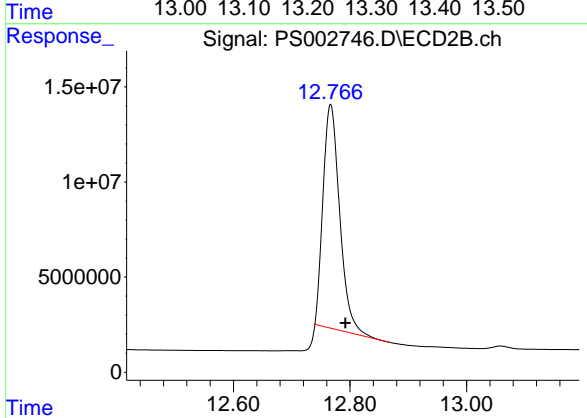
R.T.: 12.291 min
 Delta R.T.: -0.030 min
 Response: 166102732
 Conc: 464.42 ng/ml



#9 2,4-D

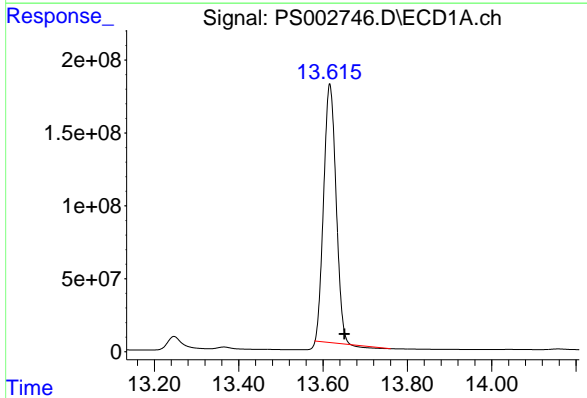
R.T.: 13.246 min
Delta R.T.: -0.028 min
Response: 225531313
Conc: 641.89 ng/ml

Instrument :
ECD_S
ClientSampleId :



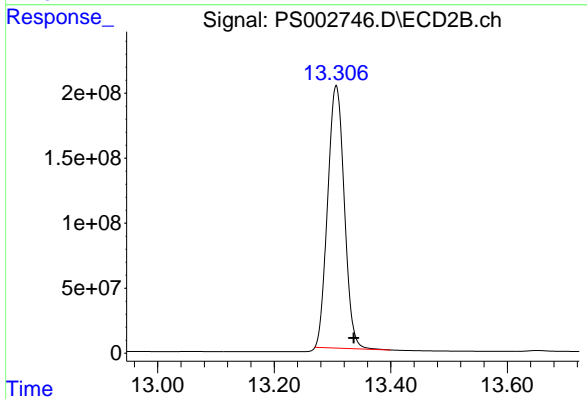
#9 2,4-D

R.T.: 12.767 min
Delta R.T.: -0.025 min
Response: 233740231
Conc: 551.84 ng/ml



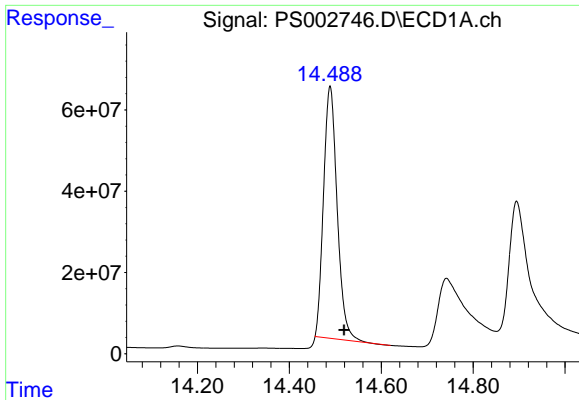
#10 Pentachlorophenol

R.T.: 13.616 min
Delta R.T.: -0.035 min
Response: 3575750559
Conc: 713.09 ng/ml



#10 Pentachlorophenol

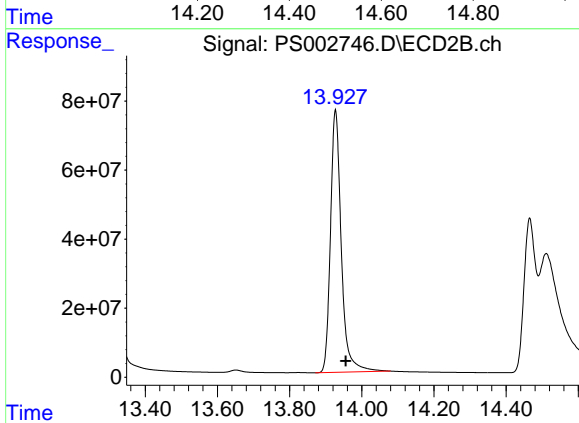
R.T.: 13.306 min
Delta R.T.: -0.030 min
Response: 4001284904
Conc: 760.55 ng/ml



#11 2,4,5-TP (SILVEX)

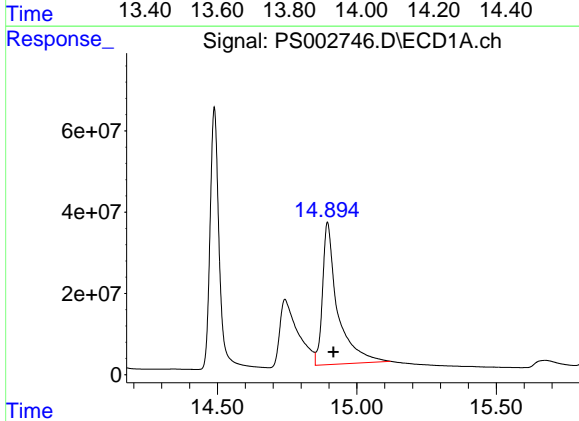
R.T.: 14.489 min
 Delta R.T.: -0.030 min
 Response: 1272738038
 Conc: 655.79 ng/ml

Instrument :
 ECD_S
 ClientSampleId :



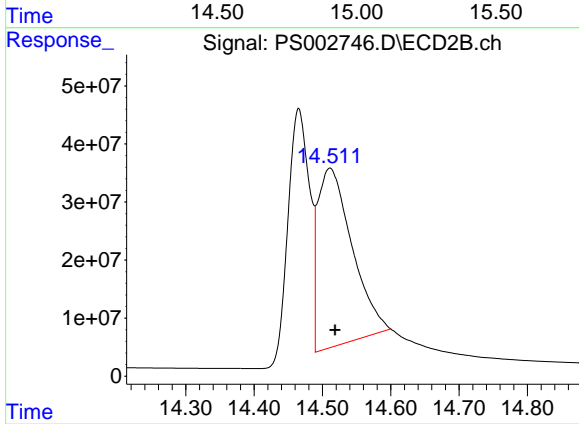
#11 2,4,5-TP (SILVEX)

R.T.: 13.927 min
 Delta R.T.: -0.028 min
 Response: 1578767772
 Conc: 751.96 ng/ml



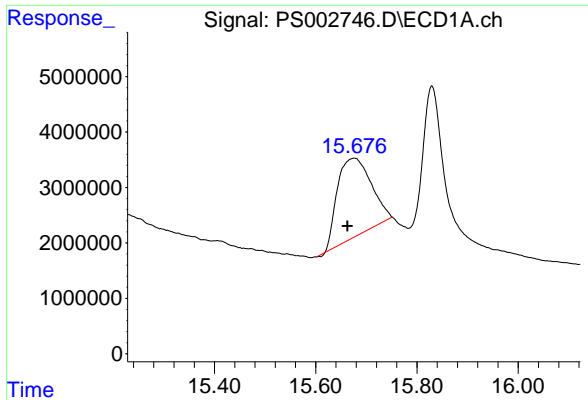
#12 2,4,5-T

R.T.: 14.895 min
 Delta R.T.: -0.022 min
 Response: 1316329022
 Conc: 700.71 ng/ml



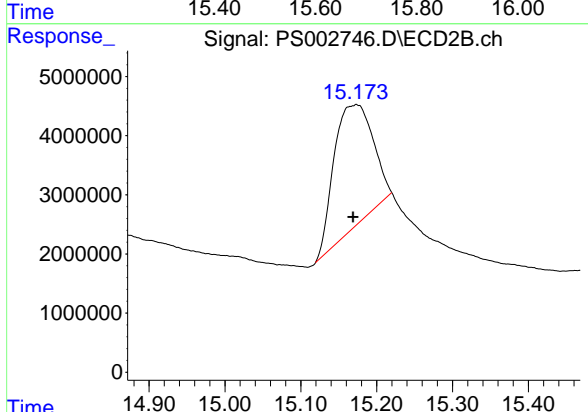
#12 2,4,5-T

R.T.: 14.511 min
 Delta R.T.: -0.007 min
 Response: 1067006174
 Conc: 623.69 ng/ml

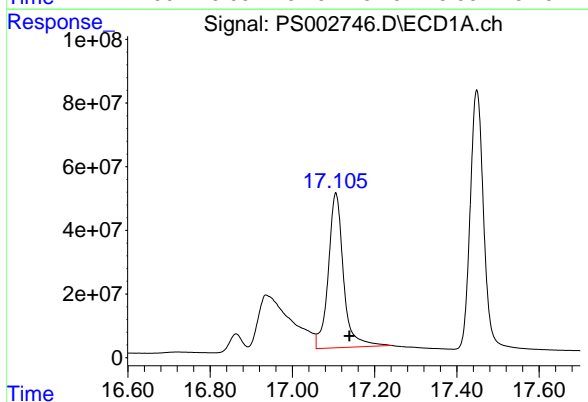


#13 2,4-DB
 R.T.: 15.676 min
 Delta R.T.: 0.013 min
 Response: 66478677
 Conc: 293.94 ng/ml

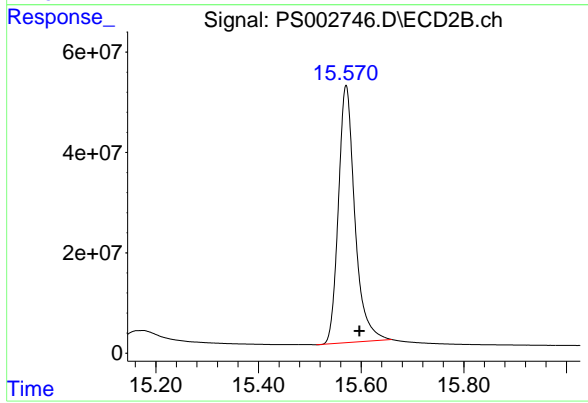
Instrument :
 ECD_S
 ClientSampleId :



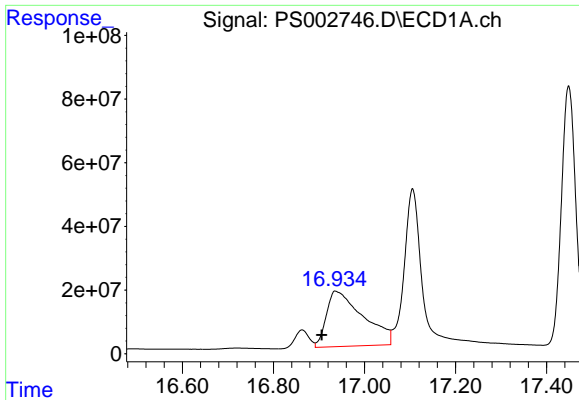
#13 2,4-DB
 R.T.: 15.173 min
 Delta R.T.: 0.004 min
 Response: 74257719
 Conc: 306.53 ng/ml



#14 DINOSEB
 R.T.: 17.106 min
 Delta R.T.: -0.033 min
 Response: 1246684981
 Conc: 856.70 ng/ml

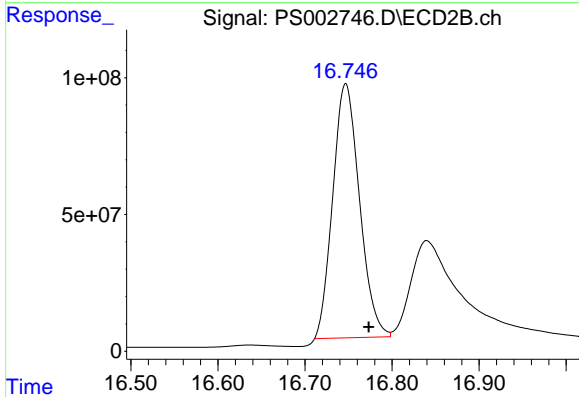


#14 DINOSEB
 R.T.: 15.571 min
 Delta R.T.: -0.026 min
 Response: 1138752761
 Conc: 746.20 ng/ml

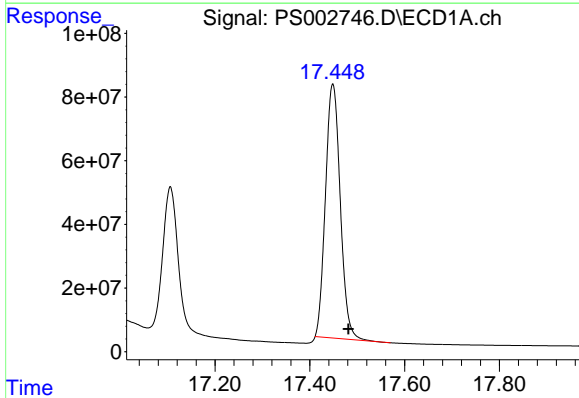


#15 Picloram
R.T.: 16.936 min
Delta R.T.: 0.030 min
Response: 973012647
Conc: 383.40 ng/ml

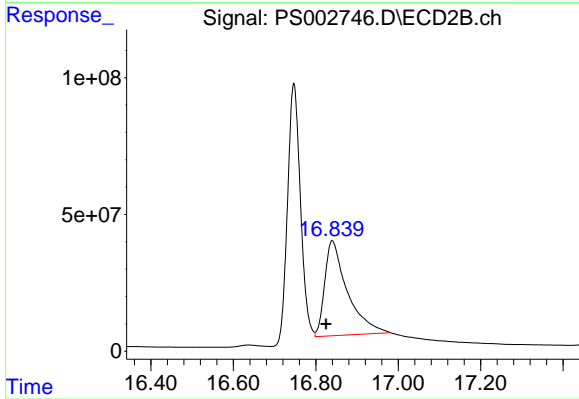
Instrument :
ECD_S
ClientSampled :



#15 Picloram
R.T.: 16.747 min
Delta R.T.: -0.026 min
Response: 1982044545
Conc: 720.44 ng/ml



#16 DCPA
R.T.: 17.448 min
Delta R.T.: -0.033 min
Response: 1728434308
Conc: 711.27 ng/ml



#16 DCPA
R.T.: 16.840 min
Delta R.T.: 0.015 min
Response: 1322783200
Conc: 455.33 ng/ml