

Data Path : Z:\pestpcbsrv\HPCHEM1\ECD_S\Data\PS010224\
 Data File : PS025404.D
 Signal(s) : Signal #1: ECD1A.ch Signal #2: ECD2B.ch
 Acq On : 02 Jan 2024 17:51
 Operator : AR\AJ
 Sample : 05907-04
 Misc :
 ALS Vial : 17 Sample Multiplier: 1

Instrument :
 ECD_S
 ClientSampleId :
 GH-SS-14-2-4

Integration File signal 1: autoint1.e
 Integration File signal 2: autoint2.e
 Quant Time: Jan 03 01:39:09 2024
 Quant Method : Z:\pestpcbsrv\HPCHEM1\ECD_S\Method\PS122823.M
 Quant Title : 8080.M
 QLast Update : Thu Dec 28 17:23:18 2023
 Response via : Initial Calibration
 Integrator: ChemStation

Volume Inj. : 2 µl
 Signal #1 Phase : Rtx-CLPesticides Signal #2 Phase: Rtx-CLPesticides2
 Signal #1 Info : 30M x 0.32mm x0.5 Signal #2 Info : 30M x 0.32mm x 0.25µm

Compound	RT#1	RT#2	Resp#1	Resp#2	ng/ml	ng/ml

System Monitoring Compounds						
4) S 2,4-DCAA	6.350	6.761	1402.8E6	420.8E6	626.009	592.820
Target Compounds						
1) T Dalapon	2.434	2.488	29731867	1450776	9.608	1.262 #
2) T 3,5-DICHL...	5.690	5.939	8744314	101.7E6	2.571	90.901 #
3) T 4-Nitroph...	6.162	6.402	98916922	-796821	63.853	N.D. #
5) T DICAMBA	6.513	6.960	27924163	11226039	2.862	3.709 #
6) T MCPP	6.676	7.006	190.6E6	5177684	28.335	2.594 #
7) T MCPA	6.796	7.224	55869051	21807805	5.891	6.938
8) T DICHLORPROP	7.065	7.543	43608169	28287273	16.951	36.569 #
9) T 2,4-D	7.280	7.843	5441110	5201440	1.756	5.423 #
10) T Pentachlo...	7.517	8.234	270.7E6	4368182	7.679	<MDL #
11) T 2,4,5-TP ...	8.028	8.595	15187562	10642275	<MDL	2.461 #
12) T 2,4,5-T	8.327f	8.945	21953550	4225264	1.464	<MDL #
13) T 2,4-DB	8.804	9.469	97503036	12203822	40.435	22.247 #
14) T DINOSEB	9.854	9.802	111.9E6	17928428	9.732	5.645 #
15) T Picloram	9.699	10.752	281.2E6	38662334	13.457	5.674 #
16) T DCPA	10.083	10.752	283.3E6	38662334	14.908	7.240 #

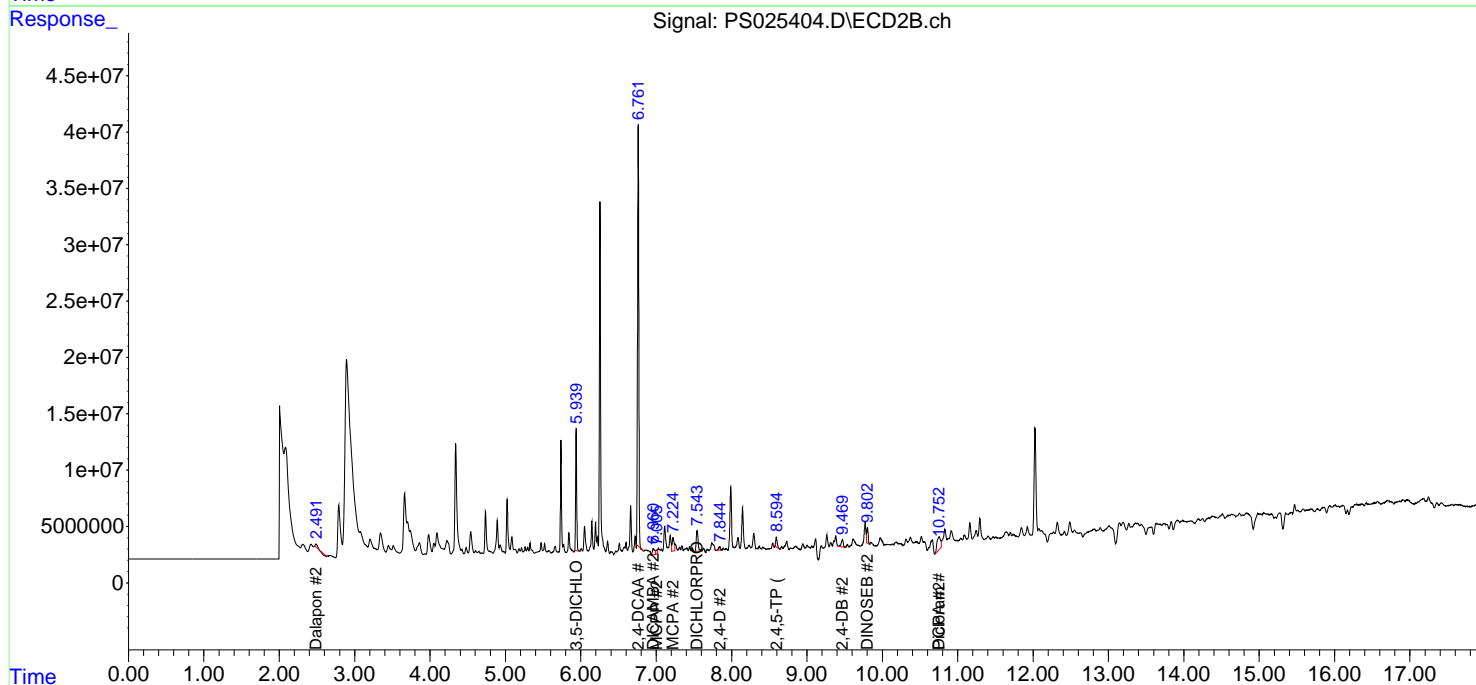
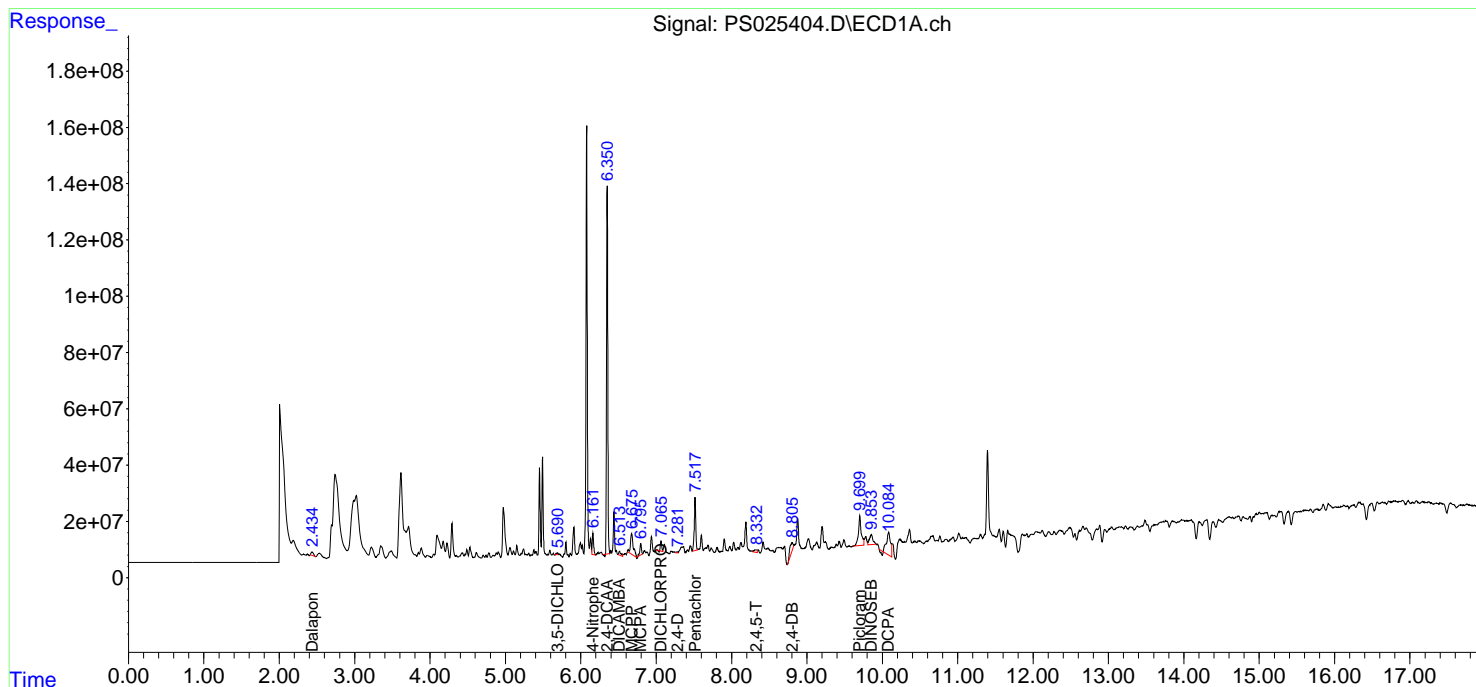
(f)=RT Delta > 1/2 Window (#)=Amounts differ by > 25% (m)=manual int.

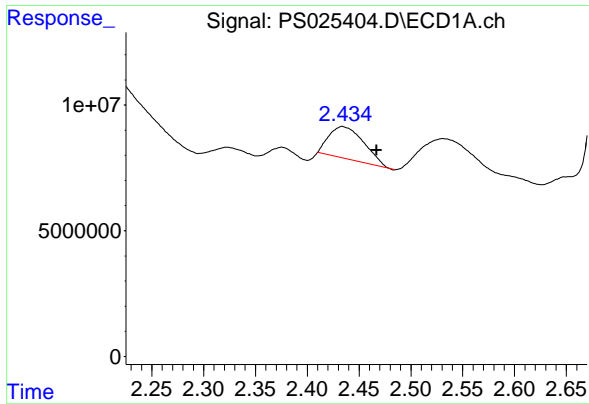
Data Path : Z:\pestpcbsrv\HPCHEM1\ECD_S\Data\PS010224\
 Data File : PS025404.D
 Signal(s) : Signal #1: ECD1A.ch Signal #2: ECD2B.ch
 Acq On : 02 Jan 2024 17:51
 Operator : AR\AJ
 Sample : 05907-04
 Misc :
 ALS Vial : 17 Sample Multiplier: 1

Instrument :
 ECD_S
 ClientSampleId :
 GHL-SS-14-2-4

Integration File signal 1: autoint1.e
 Integration File signal 2: autoint2.e
 Quant Time: Jan 03 01:39:09 2024
 Quant Method : Z:\pestpcbsrv\HPCHEM1\ECD_S\Method\PS122823.M
 Quant Title : 8080.M
 QLast Update : Thu Dec 28 17:23:18 2023
 Response via : Initial Calibration
 Integrator: ChemStation

Volume Inj. : 2 µl
 Signal #1 Phase : Rtx-CLPesticides Signal #2 Phase: Rtx-CLPesticides2
 Signal #1 Info : 30M x 0.32mm x 0.5 Signal #2 Info : 30M x 0.32mm x 0.25µm

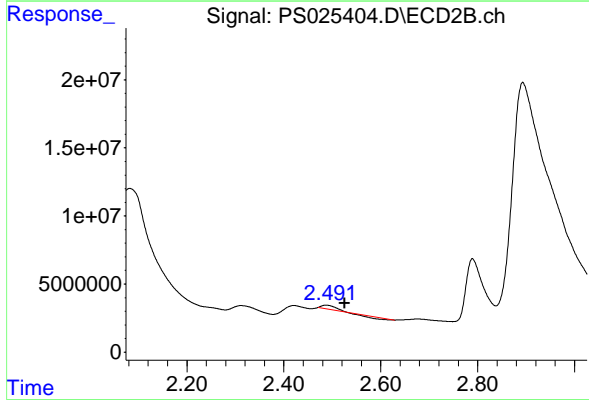




#1 Dalapon

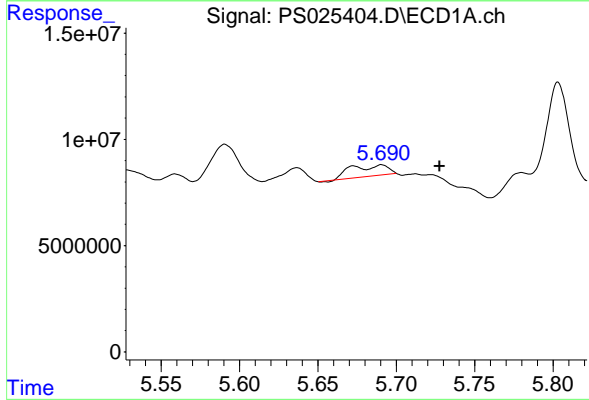
R.T.: 2.434 min
 Delta R.T.: -0.033 min
 Response: 29731867
 Conc: 9.61 ng/ml

Instrument :
 ECD_S
 ClientSampleId :
 GHL-SS-14-2-4



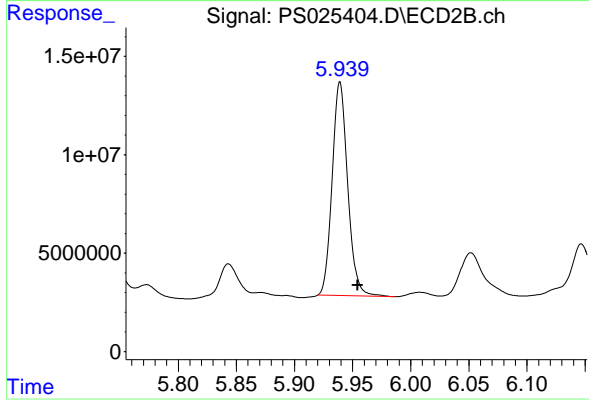
#1 Dalapon

R.T.: 2.488 min
 Delta R.T.: -0.038 min
 Response: 1450776
 Conc: 1.26 ng/ml



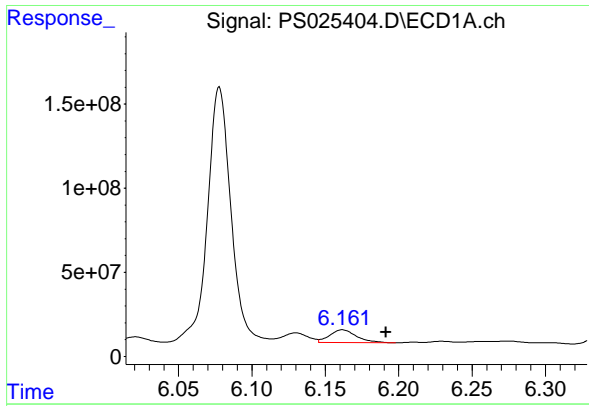
#2 3,5-DICHLOROBENZOIC ACID

R.T.: 5.690 min
 Delta R.T.: -0.037 min
 Response: 8744314
 Conc: 2.57 ng/ml



#2 3,5-DICHLOROBENZOIC ACID

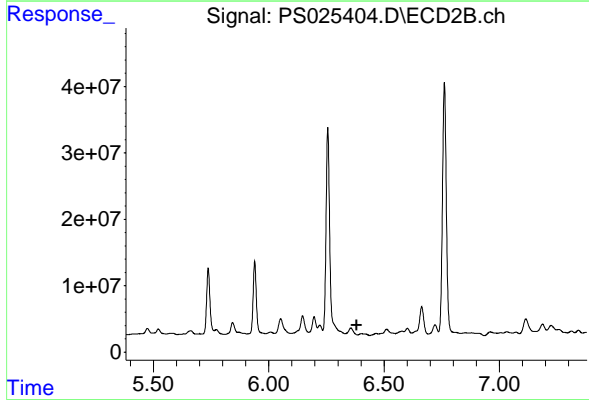
R.T.: 5.939 min
 Delta R.T.: -0.015 min
 Response: 101667747
 Conc: 90.90 ng/ml



#3 4-Nitrophenol

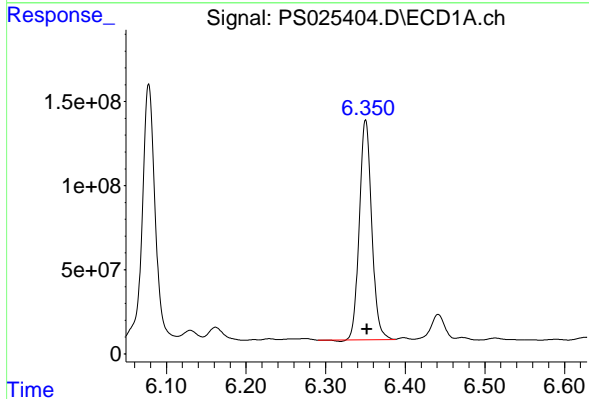
R.T.: 6.162 min
 Delta R.T.: -0.030 min
 Response: 98916922
 Conc: 63.85 ng/ml

Instrument :
 ECD_S
 ClientSampleId :
 GHL-SS-14-2-4



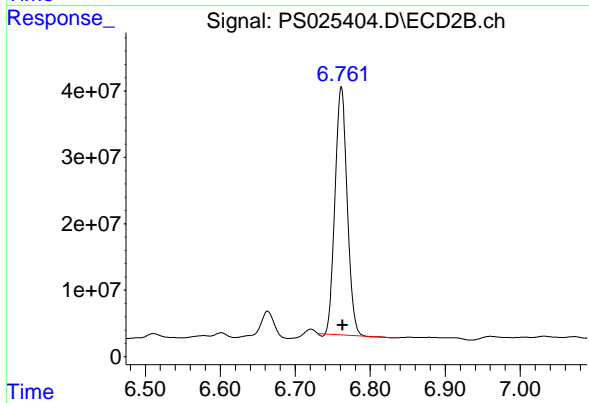
#3 4-Nitrophenol

R.T.: 6.402 min
 Delta R.T.: 0.021 min
 Response: -796821
 Conc: N.D.



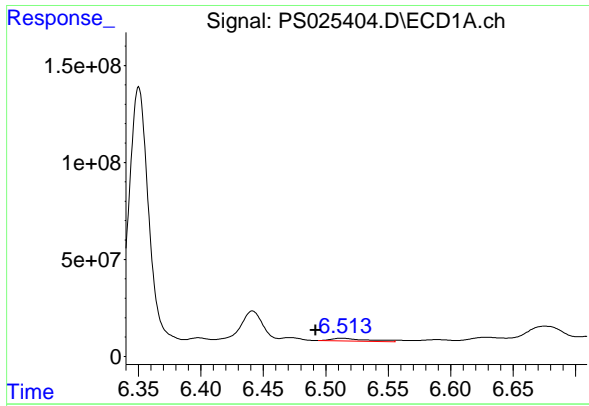
#4 2,4-DCAA

R.T.: 6.350 min
 Delta R.T.: -0.002 min
 Response: 1402763584
 Conc: 626.01 ng/ml



#4 2,4-DCAA

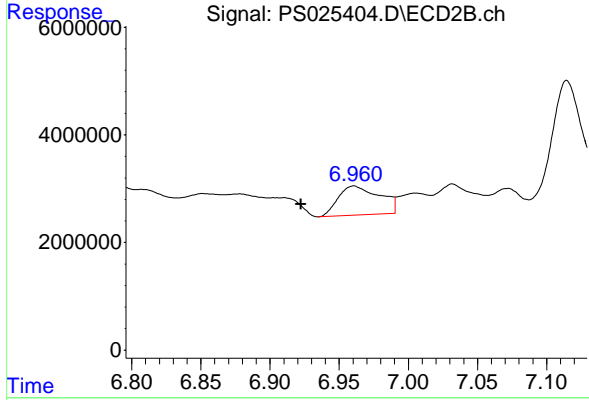
R.T.: 6.761 min
 Delta R.T.: -0.002 min
 Response: 420767640
 Conc: 592.82 ng/ml



#5 DICAMBA

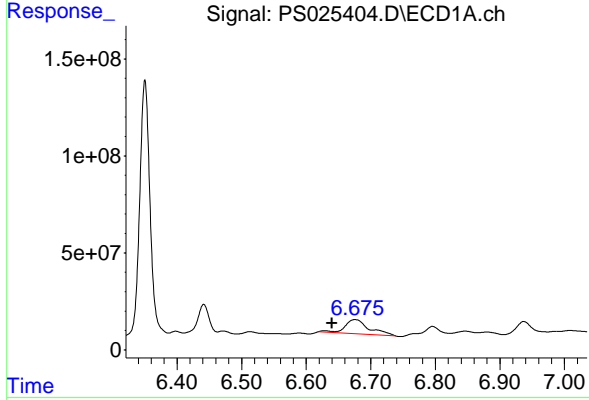
R.T.: 6.513 min
 Delta R.T.: 0.021 min
 Response: 27924163
 Conc: 2.86 ng/ml

Instrument :
 ECD_S
 ClientSampleId :
 GHL-SS-14-2-4



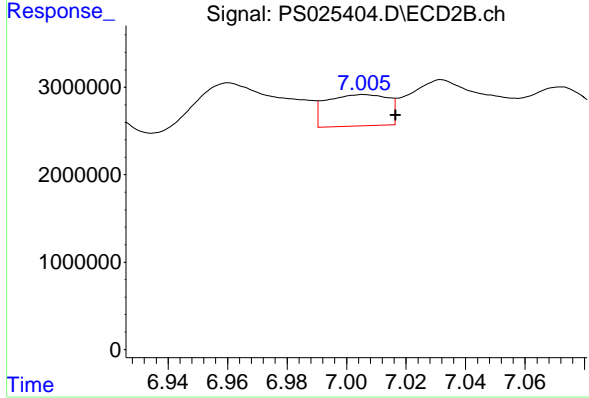
#5 DICAMBA

R.T.: 6.960 min
 Delta R.T.: 0.038 min
 Response: 11226039
 Conc: 3.71 ng/ml



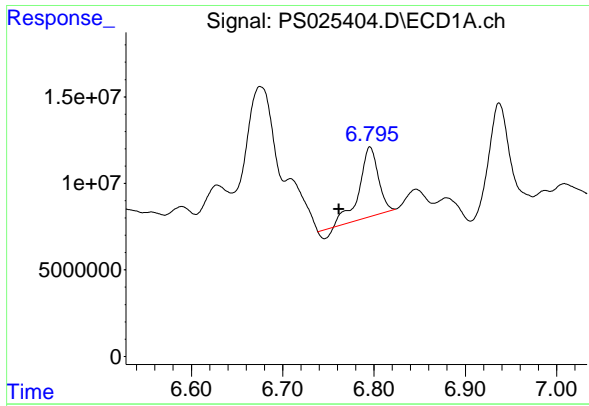
#6 MCPP

R.T.: 6.676 min
 Delta R.T.: 0.036 min
 Response: 190633378
 Conc: 28.33 ug/ml



#6 MCPP

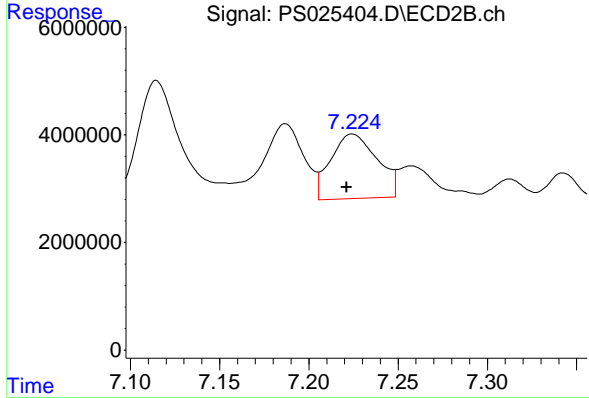
R.T.: 7.006 min
 Delta R.T.: -0.011 min
 Response: 5177684
 Conc: 2.59 ug/ml



#7 MCPA

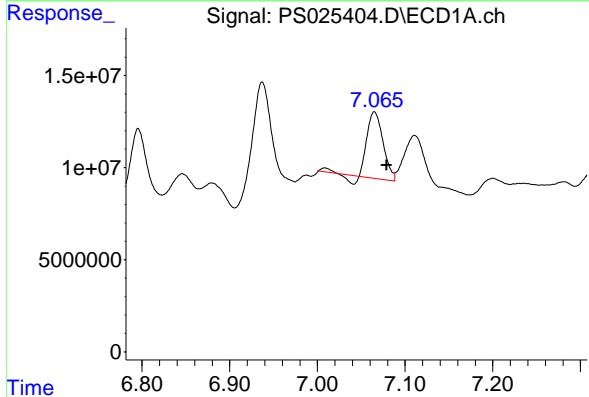
R.T.: 6.796 min
 Delta R.T.: 0.034 min
 Response: 55869051
 Conc: 5.89 ug/ml

Instrument : ECD_S
 ClientSampleId : GH-SS-14-2-4



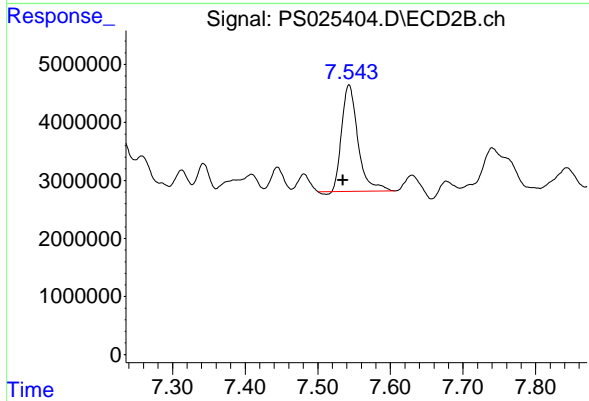
#7 MCPA

R.T.: 7.224 min
 Delta R.T.: 0.003 min
 Response: 21807805
 Conc: 6.94 ug/ml



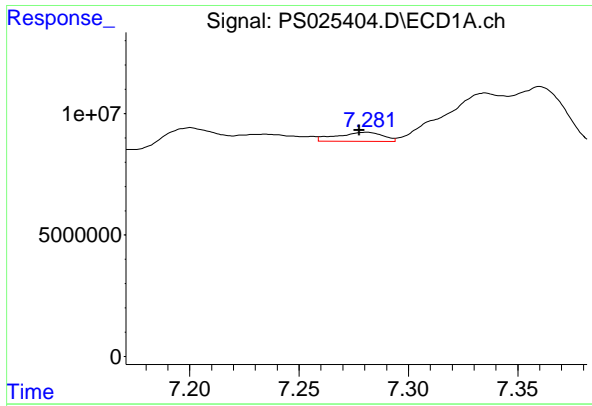
#8 DICHLORPROP

R.T.: 7.065 min
 Delta R.T.: -0.014 min
 Response: 43608169
 Conc: 16.95 ng/ml



#8 DICHLORPROP

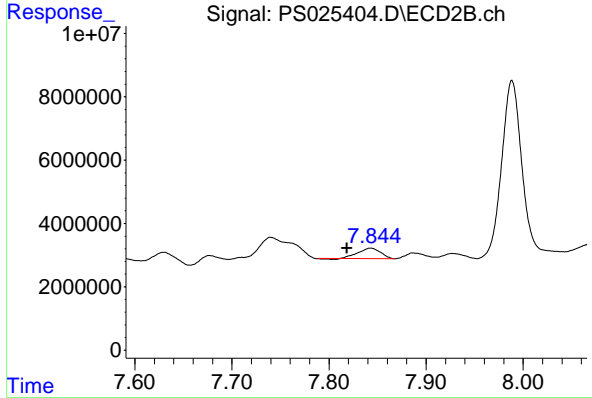
R.T.: 7.543 min
 Delta R.T.: 0.008 min
 Response: 28287273
 Conc: 36.57 ng/ml



#9 2,4-D

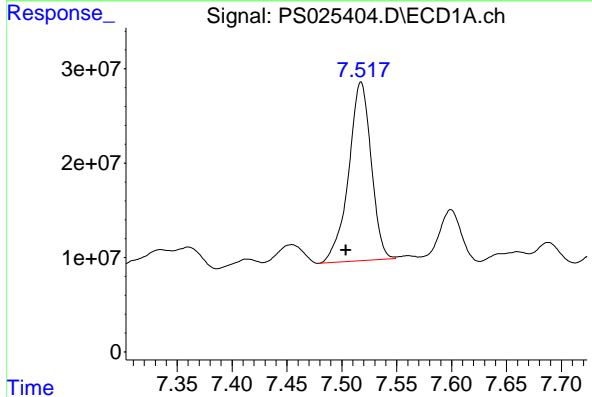
R.T.: 7.280 min
 Delta R.T.: 0.003 min
 Response: 5441110
 Conc: 1.76 ng/ml

Instrument :
 ECD_S
 ClientSampleId :
 GHL-SS-14-2-4



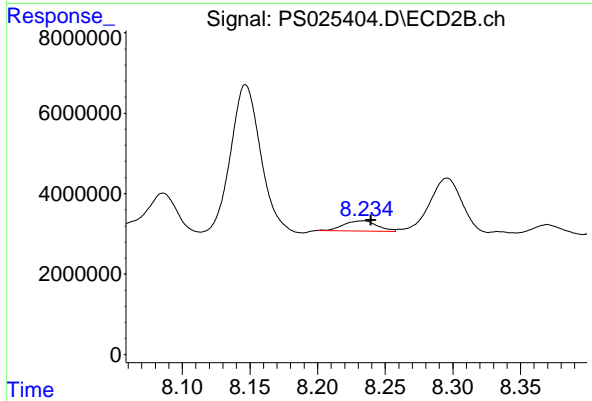
#9 2,4-D

R.T.: 7.843 min
 Delta R.T.: 0.025 min
 Response: 5201440
 Conc: 5.42 ng/ml



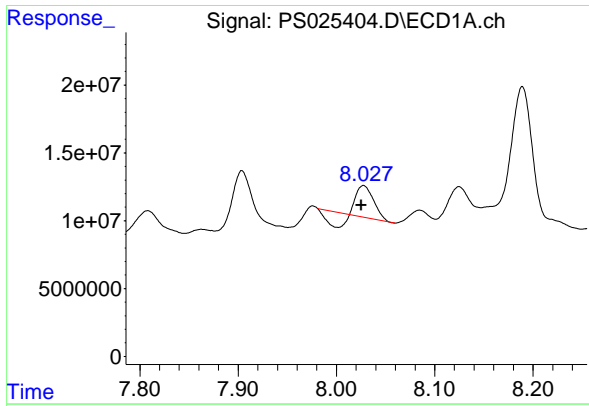
#10 Pentachlorophenol

R.T.: 7.517 min
 Delta R.T.: 0.014 min
 Response: 270675286
 Conc: 7.68 ng/ml



#10 Pentachlorophenol

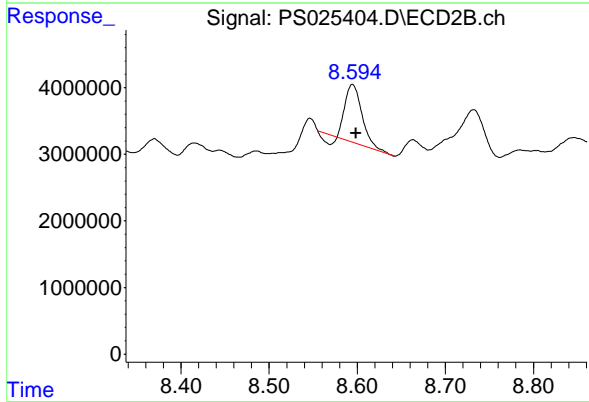
R.T.: 8.234 min
 Delta R.T.: -0.006 min
 Response: 4368182
 Conc: N.D.



#11 2,4,5-TP (SILVEX)

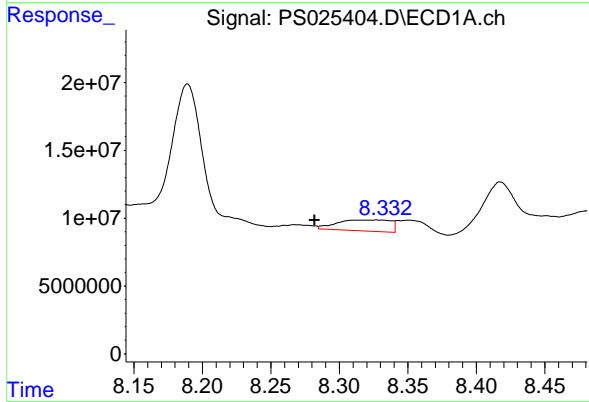
R.T.: 8.028 min
 Delta R.T.: 0.002 min
 Response: 15187562
 Conc: N.D.

Instrument :
 ECD_S
 ClientSampleId :
 GHL-SS-14-2-4



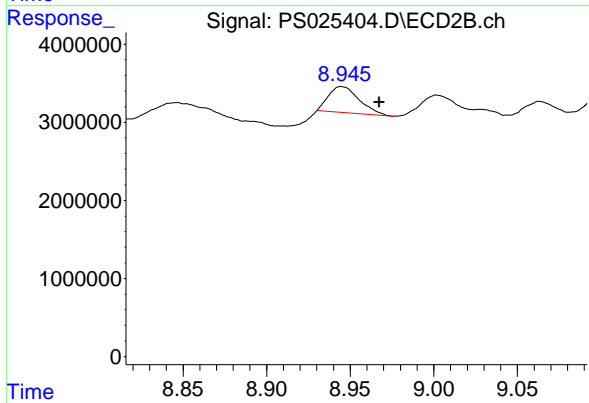
#11 2,4,5-TP (SILVEX)

R.T.: 8.595 min
 Delta R.T.: -0.004 min
 Response: 10642275
 Conc: 2.46 ng/ml



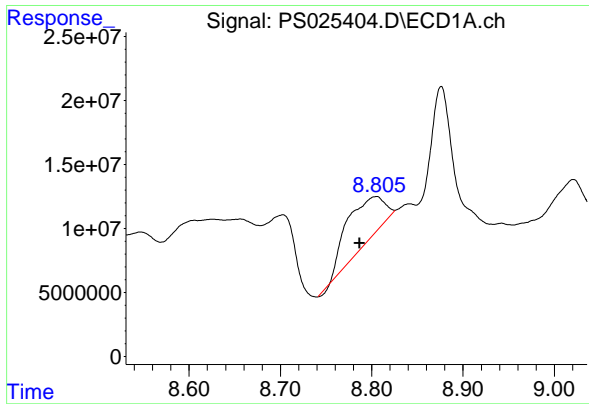
#12 2,4,5-T

R.T.: 8.327 min
 Delta R.T.: 0.045 min
 Response: 21953550
 Conc: 1.46 ng/ml



#12 2,4,5-T

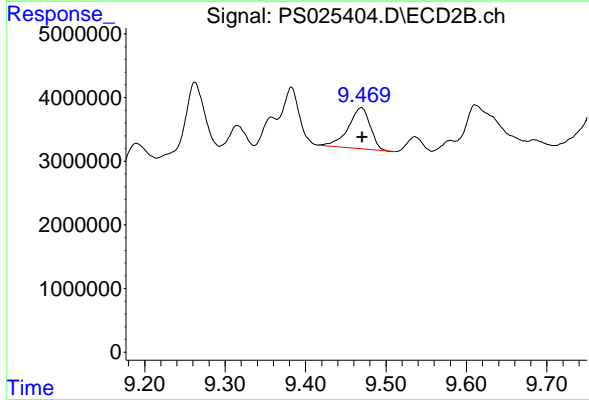
R.T.: 8.945 min
 Delta R.T.: -0.022 min
 Response: 4225264
 Conc: N.D.



#13 2,4-DB

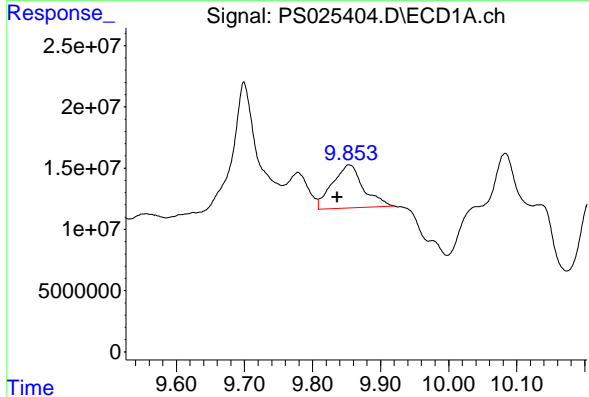
R.T.: 8.804 min
 Delta R.T.: 0.017 min
 Response: 97503036
 Conc: 40.44 ng/ml

Instrument :
 ECD_S
 ClientSampleId :
 GHL-SS-14-2-4



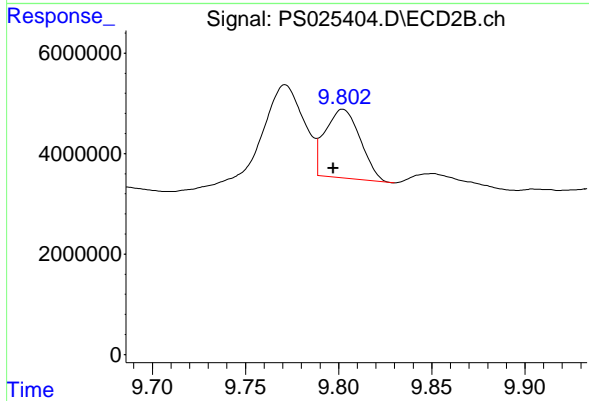
#13 2,4-DB

R.T.: 9.469 min
 Delta R.T.: -0.001 min
 Response: 12203822
 Conc: 22.25 ng/ml



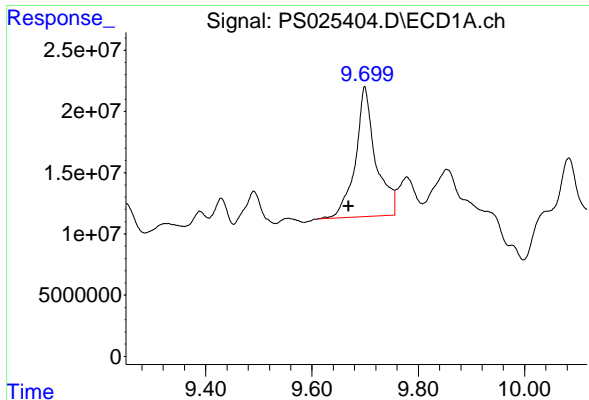
#14 DINOSEB

R.T.: 9.854 min
 Delta R.T.: 0.017 min
 Response: 111860005
 Conc: 9.73 ng/ml



#14 DINOSEB

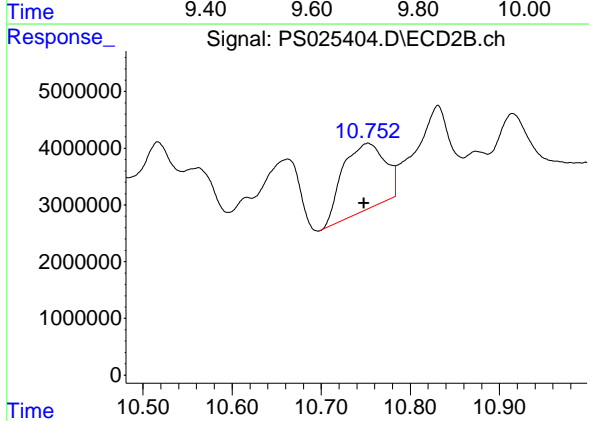
R.T.: 9.802 min
 Delta R.T.: 0.005 min
 Response: 17928428
 Conc: 5.64 ng/ml



#15 Picloram

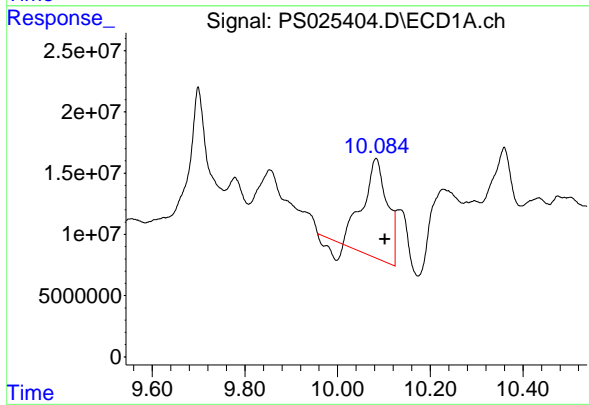
R.T.: 9.699 min
 Delta R.T.: 0.031 min
 Response: 281160732
 Conc: 13.46 ng/ml

Instrument :
 ECD_S
 ClientSampleId :
 GHL-SS-14-2-4



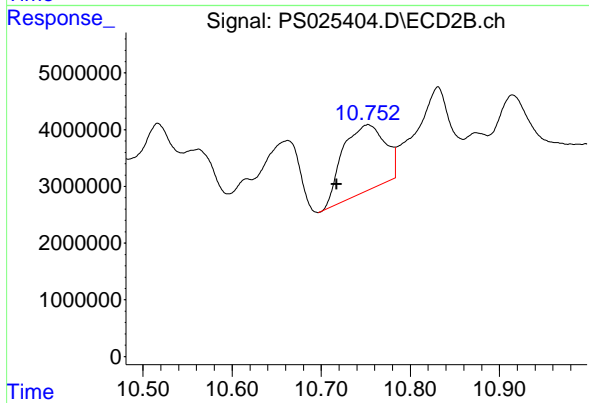
#15 Picloram

R.T.: 10.752 min
 Delta R.T.: 0.005 min
 Response: 38662334
 Conc: 5.67 ng/ml



#16 DCPA

R.T.: 10.083 min
 Delta R.T.: -0.019 min
 Response: 283303390
 Conc: 14.91 ng/ml



#16 DCPA

R.T.: 10.752 min
 Delta R.T.: 0.035 min
 Response: 38662334
 Conc: 7.24 ng/ml