

Data Path : Z:\pestpcbsrv\HPCHEM1\ECD_S\Data\PS010224\
 Data File : PS025415.D
 Signal(s) : Signal #1: ECD1A.ch Signal #2: ECD2B.ch
 Acq On : 02 Jan 2024 22:40
 Operator : AR\AJ
 Sample : 05907-19
 Misc :
 ALS Vial : 26 Sample Multiplier: 1

Instrument :
 ECD_S
 ClientSampleId :
 GHL-SS-19-2-4

Integration File signal 1: autoint1.e
 Integration File signal 2: autoint2.e
 Quant Time: Jan 03 01:41:30 2024
 Quant Method : Z:\pestpcbsrv\HPCHEM1\ECD_S\Method\PS122823.M
 Quant Title : 8080.M
 QLast Update : Thu Dec 28 17:23:18 2023
 Response via : Initial Calibration
 Integrator: ChemStation

Volume Inj. : 2 µl
 Signal #1 Phase : Rtx-CLPesticides Signal #2 Phase: Rtx-CLPesticides2
 Signal #1 Info : 30M x 0.32mm x0.5 Signal #2 Info : 30M x 0.32mm x 0.25µm

Compound	RT#1	RT#2	Resp#1	Resp#2	ng/ml	ng/ml

System Monitoring Compounds						
4) S 2,4-DCAA	6.350	6.761	1100.2E6	330.5E6	490.969	465.703
Target Compounds						
1) T Dalapon	2.435	2.492	39174896	8904848	12.659	7.748 #
2) T 3,5-DICHL...	5.691	5.975	20788468	2519906	6.112	2.253 #
3) T 4-Nitroph...	6.166	6.399	37167086	779398	23.992	1.569 #
5) T DICAMBA	6.507	6.912	19074781	2263180	1.955	<MDL #
6) T MCPP	6.676	7.010	166.0E6	7170600	24.679	3.592 #
7) T MCPA	6.796	7.220	28648921	7222594	3.021	2.298
8) T DICHLORPROP	7.067	7.542	74207196	37003463	28.845	47.837 #
9) T 2,4-D	7.239	7.845	160.8E6	1185678	51.922	1.236 #
10) T Pentachlo...	7.502	8.235	22877652	3391748	<MDL	<MDL #
11) T 2,4,5-TP ...	8.028	8.628	-1254132	515300	N.D.	<MDL
12) T 2,4,5-T	8.349f	8.946	55778630	3244198	3.719	<MDL #
13) T 2,4-DB	8.799	9.474	144.9E6	18306454	60.089	33.372 #
14) T DINOSEB	9.855	9.805	29626086	15477334	2.577	4.873 #
15) T Picloram	9.699	10.755	103.6E6	9530815	4.956	1.399 #
16) T DCPA	10.111	10.755	114.0E6	9530815	5.996	1.785 #

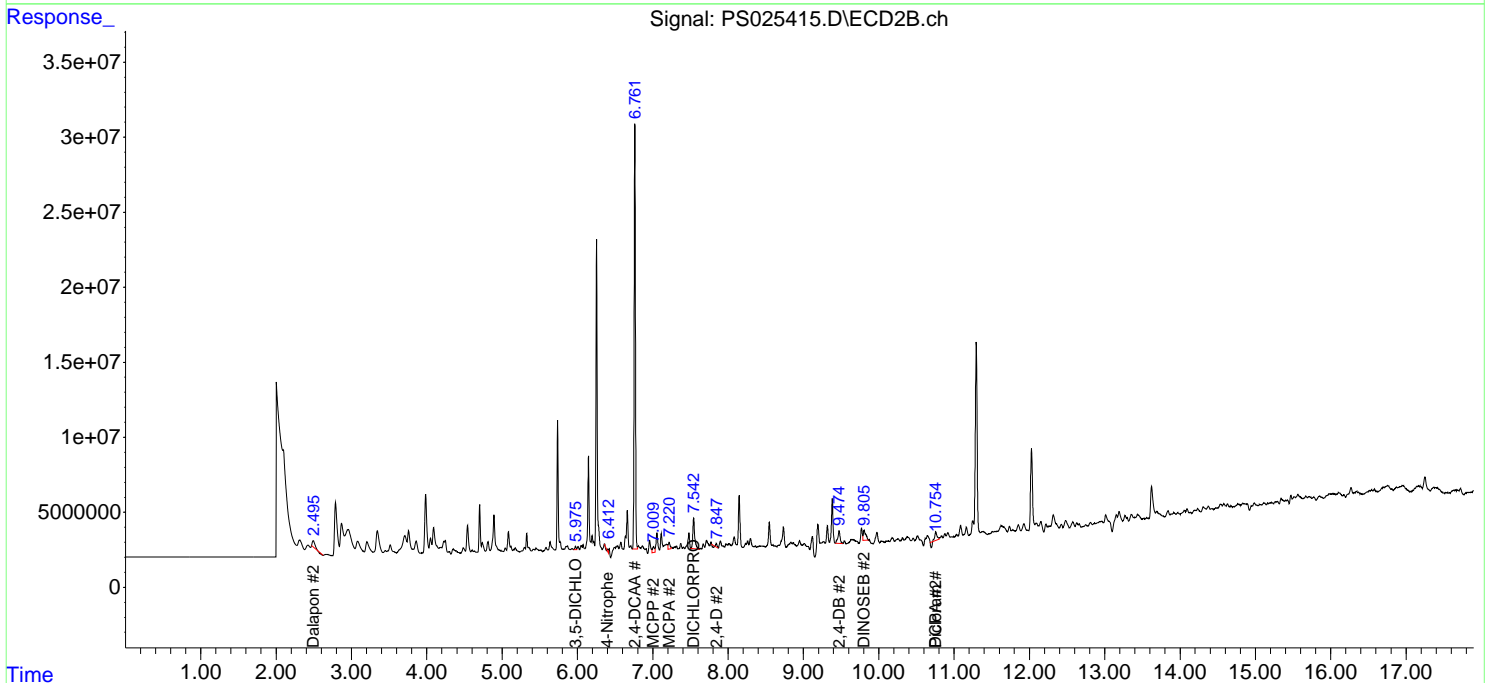
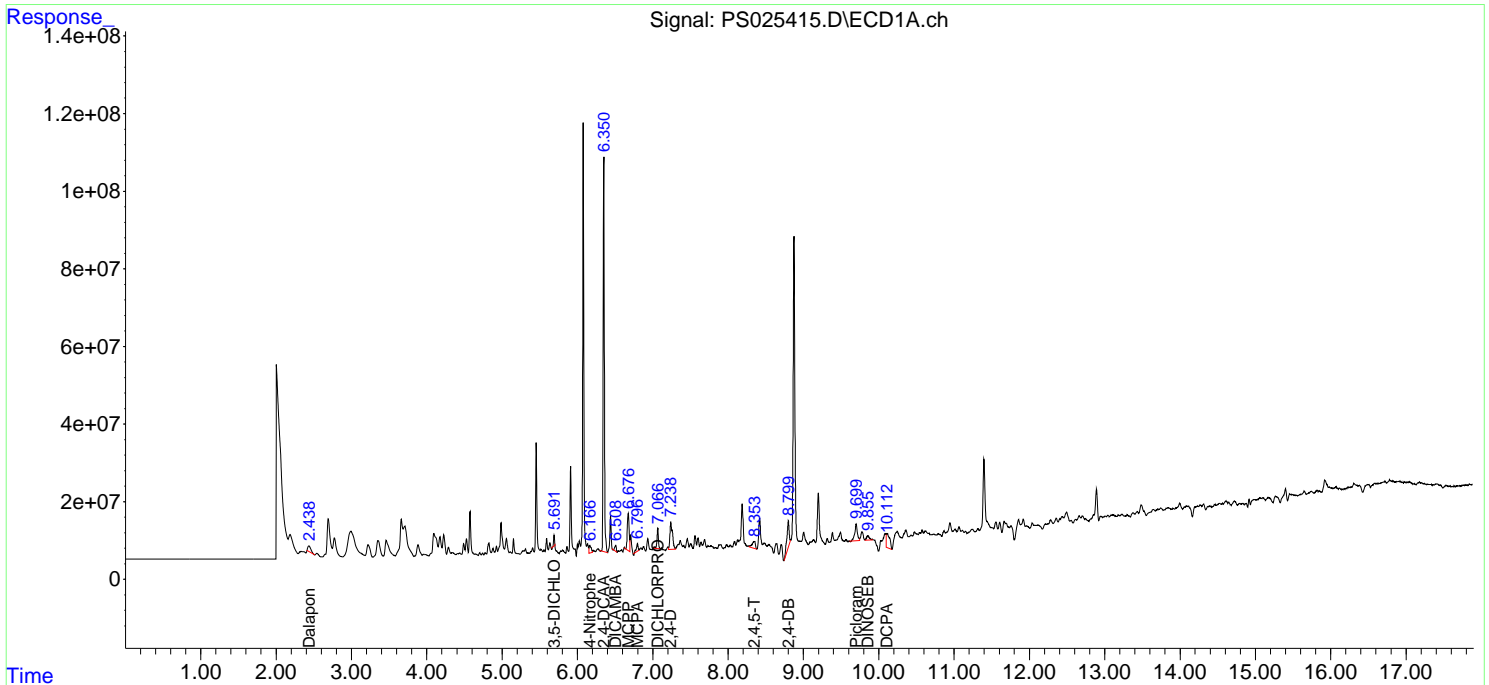
(f)=RT Delta > 1/2 Window (#)=Amounts differ by > 25% (m)=manual int.

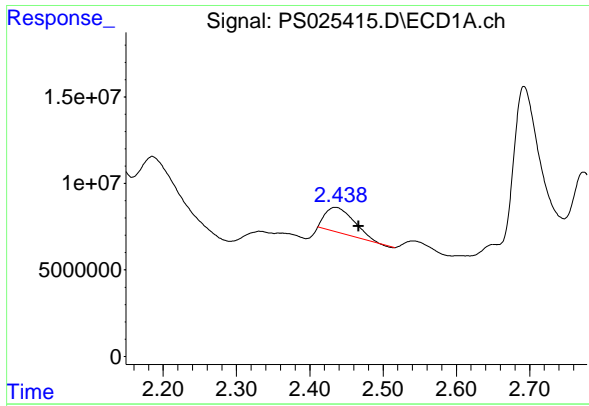
Data Path : Z:\pestpcbsrv\HPCHEM1\ECD_S\Data\PS010224\
 Data File : PS025415.D
 Signal(s) : Signal #1: ECD1A.ch Signal #2: ECD2B.ch
 Acq On : 02 Jan 2024 22:40
 Operator : AR\AJ
 Sample : 05907-19
 Misc :
 ALS Vial : 26 Sample Multiplier: 1

Instrument :
 ECD_S
 ClientSampleId :
 GHL-SS-19-2-4

Integration File signal 1: autoint1.e
 Integration File signal 2: autoint2.e
 Quant Time: Jan 03 01:41:30 2024
 Quant Method : Z:\pestpcbsrv\HPCHEM1\ECD_S\Method\PS122823.M
 Quant Title : 8080.M
 QLast Update : Thu Dec 28 17:23:18 2023
 Response via : Initial Calibration
 Integrator: ChemStation

Volume Inj. : 2 µl
 Signal #1 Phase : Rtx-CLPesticides Signal #2 Phase: Rtx-CLPesticides2
 Signal #1 Info : 30M x 0.32mm x0.5 Signal #2 Info : 30M x 0.32mm x 0.25µm

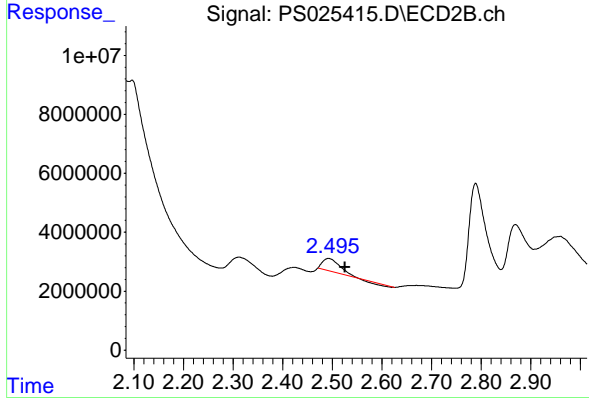




#1 Dalapon

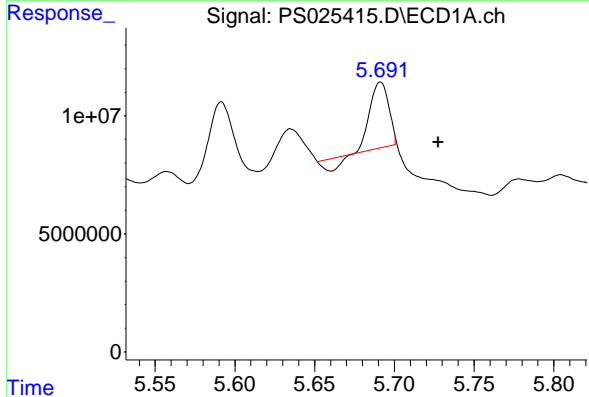
R.T.: 2.435 min
 Delta R.T.: -0.032 min
 Response: 39174896
 Conc: 12.66 ng/ml

Instrument : ECD_S
 Client Sample Id : GH-SS-19-2-4



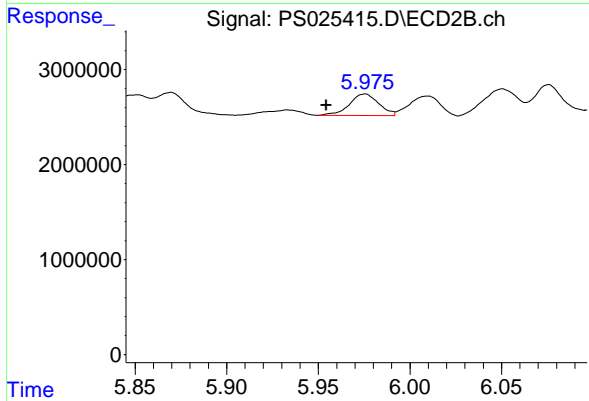
#1 Dalapon

R.T.: 2.492 min
 Delta R.T.: -0.034 min
 Response: 8904848
 Conc: 7.75 ng/ml



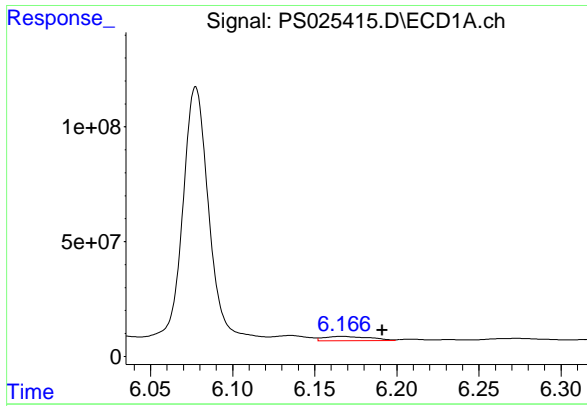
#2 3,5-DICHLOROBENZOIC ACID

R.T.: 5.691 min
 Delta R.T.: -0.036 min
 Response: 20788468
 Conc: 6.11 ng/ml



#2 3,5-DICHLOROBENZOIC ACID

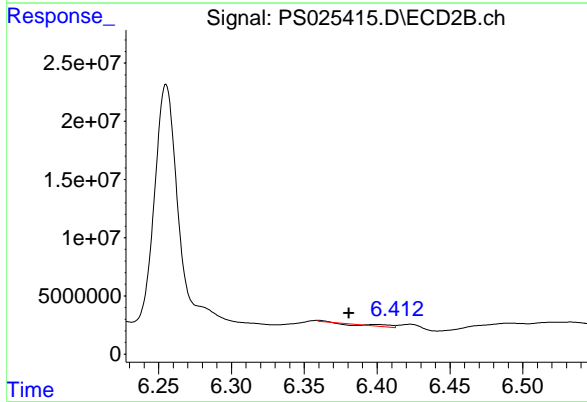
R.T.: 5.975 min
 Delta R.T.: 0.021 min
 Response: 2519906
 Conc: 2.25 ng/ml



#3 4-Nitrophenol

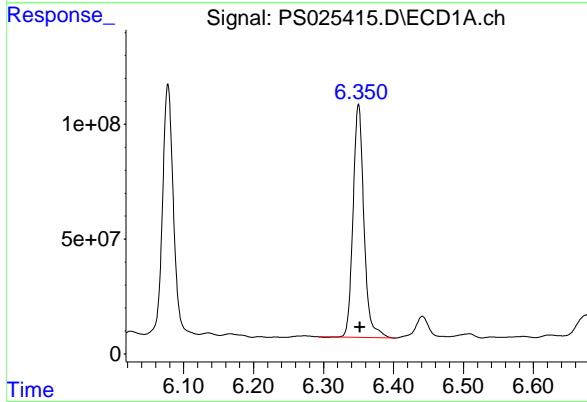
R.T.: 6.166 min
 Delta R.T.: -0.025 min
 Response: 37167086
 Conc: 23.99 ng/ml

Instrument :
 ECD_S
 ClientSampleId :
 GHL-SS-19-2-4



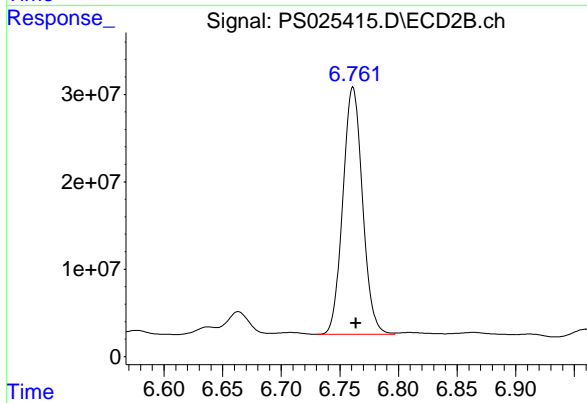
#3 4-Nitrophenol

R.T.: 6.399 min
 Delta R.T.: 0.019 min
 Response: 779398
 Conc: 1.57 ng/ml



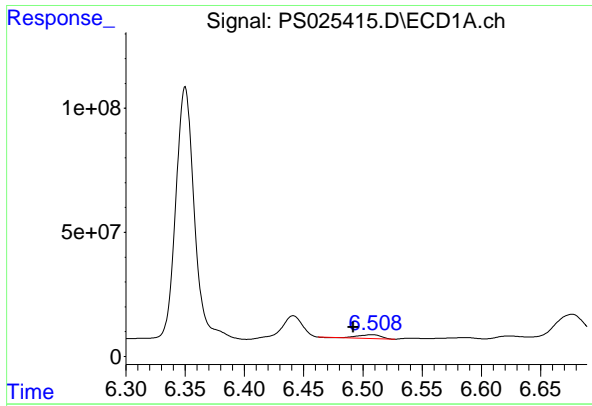
#4 2,4-DCAA

R.T.: 6.350 min
 Delta R.T.: -0.002 min
 Response: 1100165377
 Conc: 490.97 ng/ml



#4 2,4-DCAA

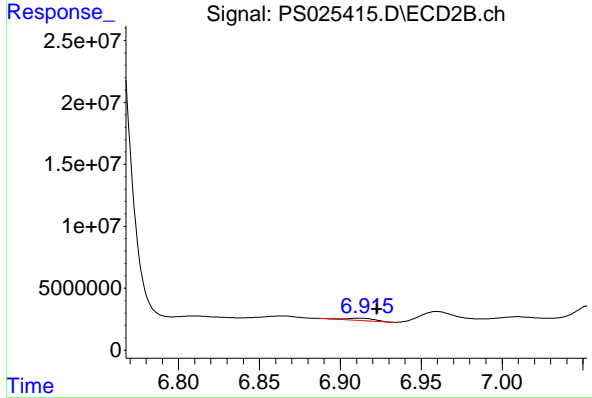
R.T.: 6.761 min
 Delta R.T.: -0.002 min
 Response: 330543733
 Conc: 465.70 ng/ml



#5 DICAMBA

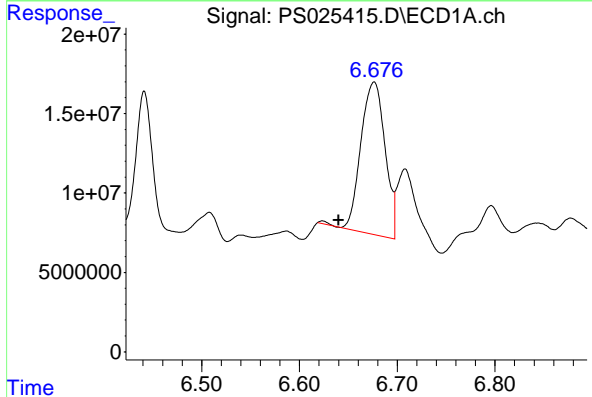
R.T.: 6.507 min
 Delta R.T.: 0.015 min
 Response: 19074781
 Conc: 1.96 ng/ml

Instrument : ECD_S
 ClientSampleId : GH-SS-19-2-4



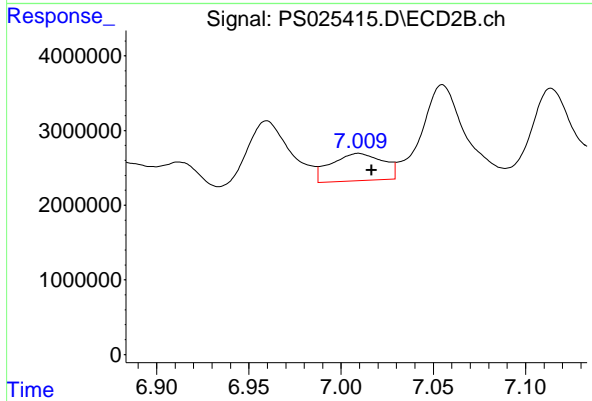
#5 DICAMBA

R.T.: 6.912 min
 Delta R.T.: -0.011 min
 Response: 2263180
 Conc: N.D.



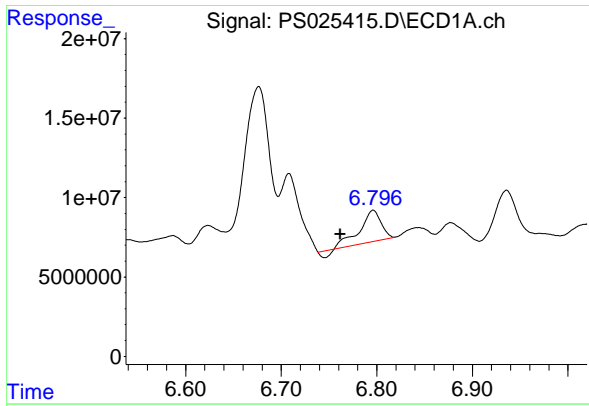
#6 MCPP

R.T.: 6.676 min
 Delta R.T.: 0.036 min
 Response: 166036593
 Conc: 24.68 ug/ml



#6 MCPP

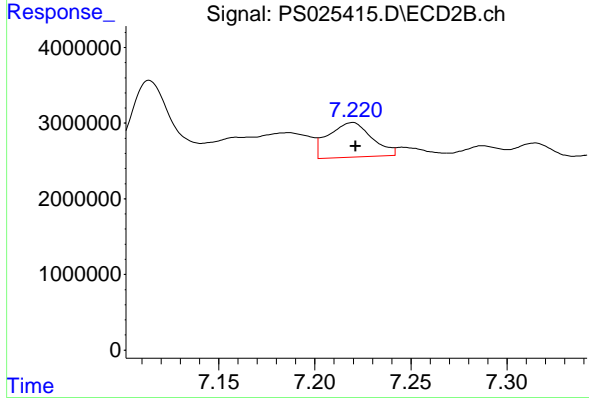
R.T.: 7.010 min
 Delta R.T.: -0.007 min
 Response: 7170600
 Conc: 3.59 ug/ml



#7 MCPA

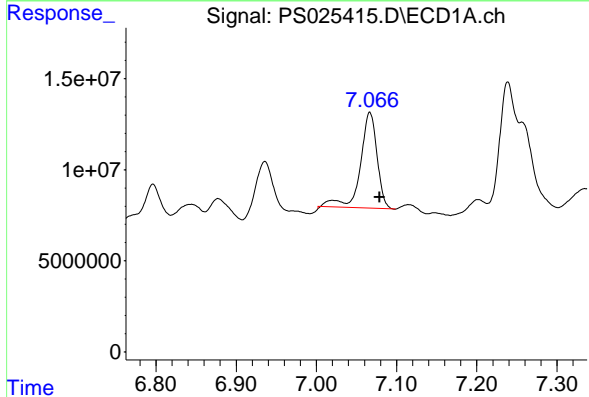
R.T.: 6.796 min
 Delta R.T.: 0.035 min
 Response: 28648921
 Conc: 3.02 ug/ml

Instrument :
 ECD_S
 ClientSampleId :
 GHL-SS-19-2-4



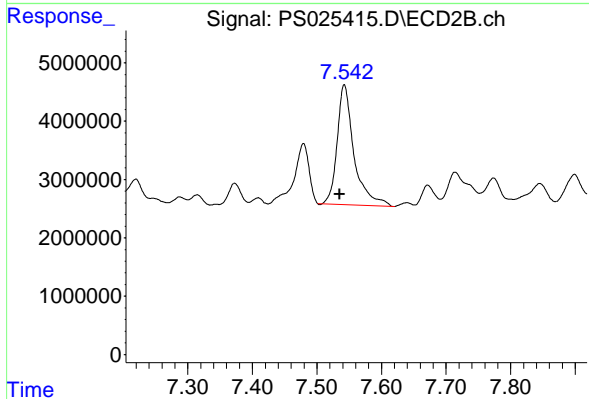
#7 MCPA

R.T.: 7.220 min
 Delta R.T.: -0.002 min
 Response: 7222594
 Conc: 2.30 ug/ml



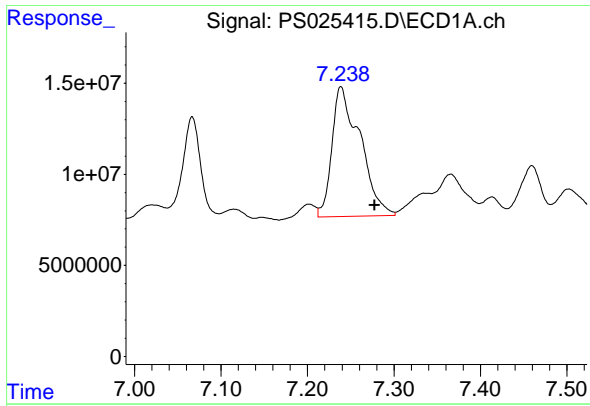
#8 DICHLORPROP

R.T.: 7.067 min
 Delta R.T.: -0.012 min
 Response: 74207196
 Conc: 28.85 ng/ml



#8 DICHLORPROP

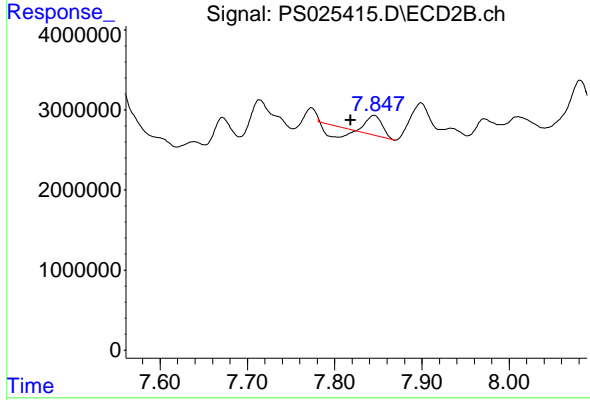
R.T.: 7.542 min
 Delta R.T.: 0.007 min
 Response: 37003463
 Conc: 47.84 ng/ml



#9 2,4-D

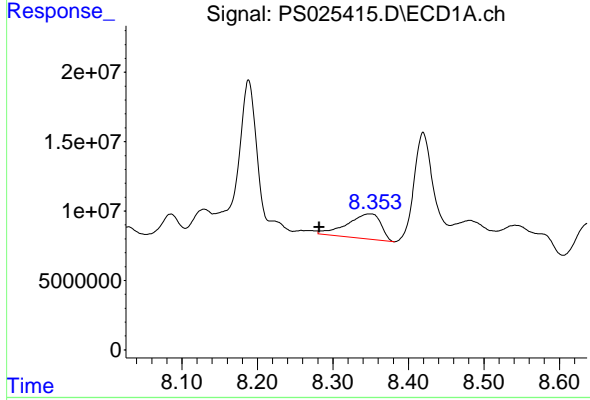
R.T.: 7.239 min
 Delta R.T.: -0.039 min
 Response: 160849528
 Conc: 51.92 ng/ml

Instrument :
 ECD_S
 ClientSampleId :
 GHL-SS-19-2-4



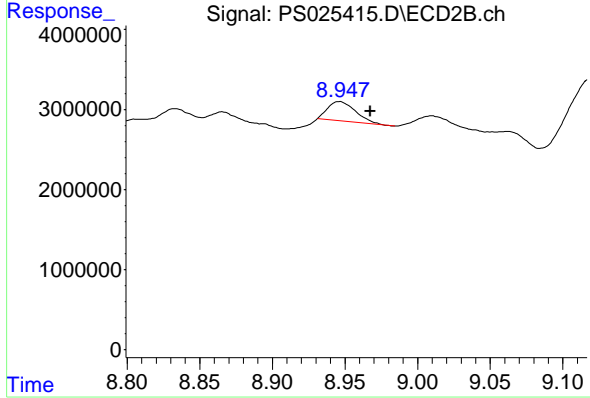
#9 2,4-D

R.T.: 7.845 min
 Delta R.T.: 0.027 min
 Response: 1185678
 Conc: 1.24 ng/ml



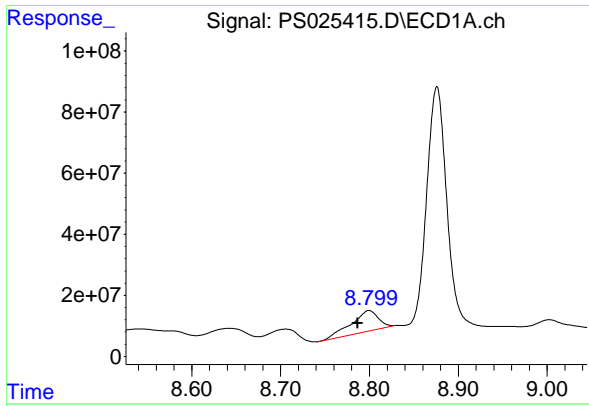
#12 2,4,5-T

R.T.: 8.349 min
 Delta R.T.: 0.067 min
 Response: 55778630
 Conc: 3.72 ng/ml



#12 2,4,5-T

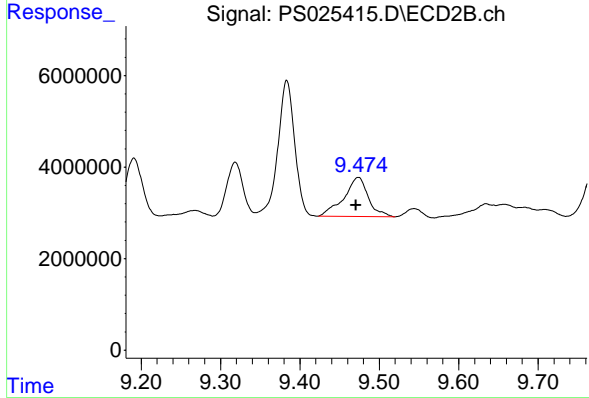
R.T.: 8.946 min
 Delta R.T.: -0.021 min
 Response: 3244198
 Conc: N.D.



#13 2,4-DB

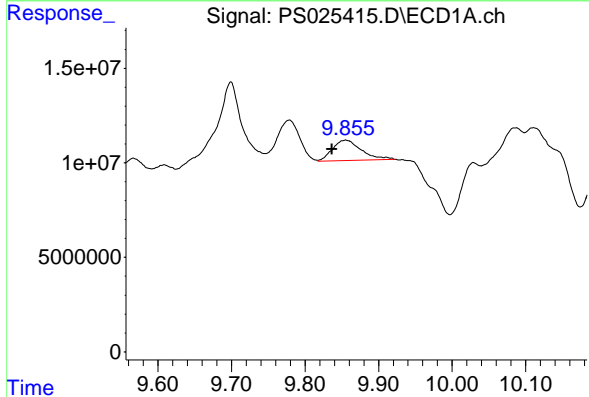
R.T.: 8.799 min
 Delta R.T.: 0.013 min
 Response: 144895166
 Conc: 60.09 ng/ml

Instrument :
 ECD_S
 ClientSampleId :
 GHL-SS-19-2-4



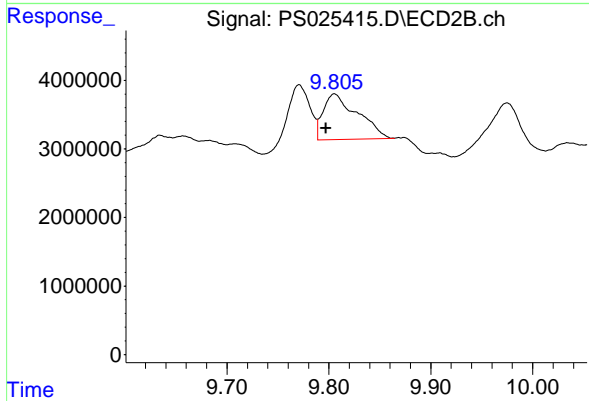
#13 2,4-DB

R.T.: 9.474 min
 Delta R.T.: 0.003 min
 Response: 18306454
 Conc: 33.37 ng/ml



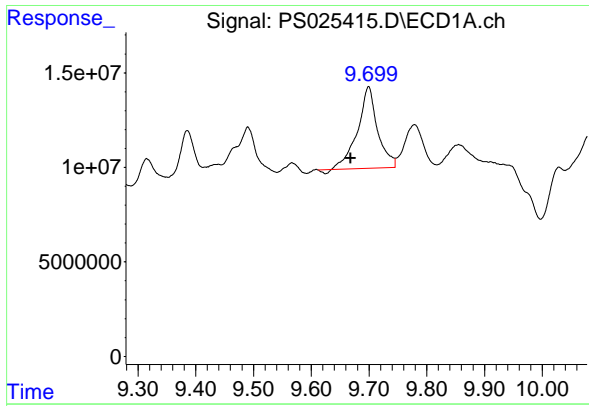
#14 DINOSEB

R.T.: 9.855 min
 Delta R.T.: 0.019 min
 Response: 29626086
 Conc: 2.58 ng/ml



#14 DINOSEB

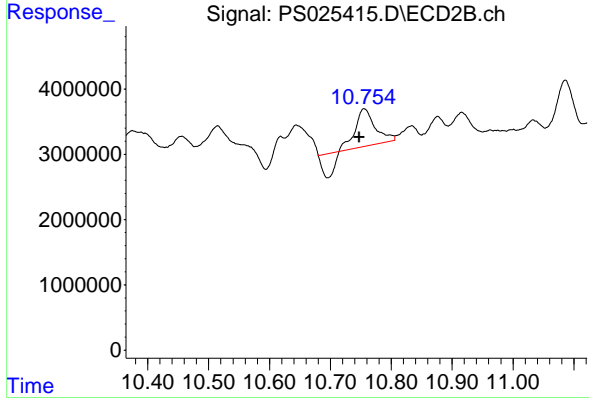
R.T.: 9.805 min
 Delta R.T.: 0.008 min
 Response: 15477334
 Conc: 4.87 ng/ml



#15 Picloram

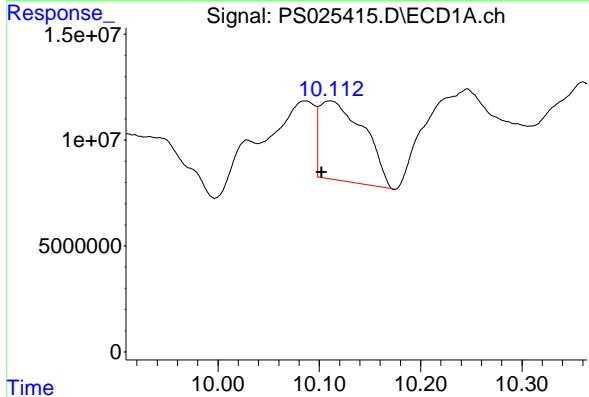
R.T.: 9.699 min
 Delta R.T.: 0.031 min
 Response: 103550587
 Conc: 4.96 ng/ml

Instrument :
 ECD_S
 ClientSampleId :
 GHL-SS-19-2-4



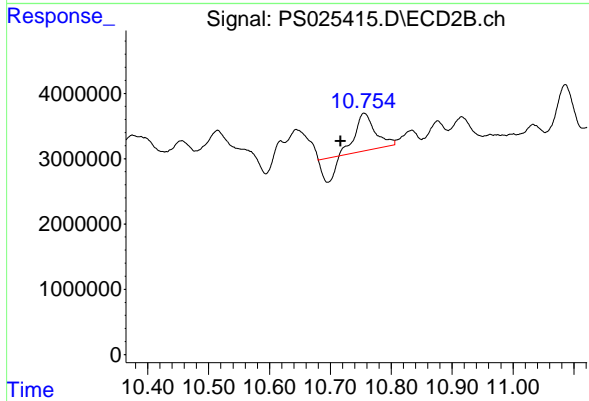
#15 Picloram

R.T.: 10.755 min
 Delta R.T.: 0.008 min
 Response: 9530815
 Conc: 1.40 ng/ml



#16 DCPA

R.T.: 10.111 min
 Delta R.T.: 0.008 min
 Response: 113953458
 Conc: 6.00 ng/ml



#16 DCPA

R.T.: 10.755 min
 Delta R.T.: 0.038 min
 Response: 9530815
 Conc: 1.78 ng/ml