

Data Path : Z:\pestpcbsrv\HPCHEM1\ECD_S\Data\PS010224\
 Data File : PS025426.D
 Signal(s) : Signal #1: ECD1A.ch Signal #2: ECD2B.ch
 Acq On : 03 Jan 2024 03:30
 Operator : AR\AJ
 Sample : 05994-04
 Misc :
 ALS Vial : 35 Sample Multiplier: 1

Instrument :
 ECD_S
 ClientSampleId :
 WC-B-COMP

Integration File signal 1: autoint1.e
 Integration File signal 2: autoint2.e
 Quant Time: Jan 03 05:06:05 2024
 Quant Method : Z:\pestpcbsrv\HPCHEM1\ECD_S\Method\PS122823.M
 Quant Title : 8080.M
 QLast Update : Thu Dec 28 17:23:18 2023
 Response via : Initial Calibration
 Integrator: ChemStation

Volume Inj. : 2 µl
 Signal #1 Phase : Rtx-CLPesticides Signal #2 Phase: Rtx-CLPesticides2
 Signal #1 Info : 30M x 0.32mm x0.5 Signal #2 Info : 30M x 0.32mm x 0.25µm

| Compound | RT#1 | RT#2 | Resp#1 | Resp#2 | ng/ml | ng/ml |
|-----------------------------|--------|--------|----------|----------|---------|----------|
| ----- | | | | | | |
| System Monitoring Compounds | | | | | | |
| 4) S 2,4-DCAA | 6.350 | 6.761 | 1404.1E6 | 424.4E6 | 626.622 | 597.981 |
| Target Compounds | | | | | | |
| 1) T Dalapon | 2.434 | 2.489 | 29087271 | 1021951 | 9.400 | <MDL # |
| 2) T 3,5-DICHL... | 5.690 | 5.939 | 7327714 | 101.3E6 | 2.155 | 90.574 # |
| 3) T 4-Nitroph... | 6.161 | 6.401 | 99142883 | -4804429 | 63.999 | N.D. # |
| 5) T DICAMBA | 6.512 | 6.914 | 2944820 | 1640072 | <MDL | <MDL # |
| 6) T MCPP | 6.672 | 7.006 | 251.1E6 | 5347930 | 37.315 | 2.679 # |
| 7) T MCPA | 6.796 | 7.226 | 44274448 | 17409019 | 4.668 | 5.539 |
| 8) T DICHLORPROP | 7.066 | 7.542 | 47607762 | 48879637 | 18.506 | 63.190 # |
| 9) T 2,4-D | 7.336f | 7.844 | 36139818 | 4993150 | 11.666 | 5.206 # |
| 10) T Pentachlo... | 7.517 | 8.232 | 275.3E6 | 5105922 | 7.810 | <MDL # |
| 11) T 2,4,5-TP ... | 8.029 | 8.594 | 13441695 | 11836351 | <MDL | 2.737 # |
| 12) T 2,4,5-T | 0.000 | 8.945 | 0 | 3578819 | N.D. | <MDL |
| 13) T 2,4-DB | 8.802 | 9.468 | 116.3E6 | 2054940 | 48.219 | 3.746 # |
| 14) T DINOSEB | 9.850 | 9.802 | 89169404 | 16771400 | 7.758 | 5.281 # |
| 15) T Picloram | 9.699 | 10.752 | 225.6E6 | -3676900 | 10.800 | N.D. # |
| 16) T DCPA | 10.084 | 10.752 | 217.7E6 | -3676900 | 11.455 | N.D. # |

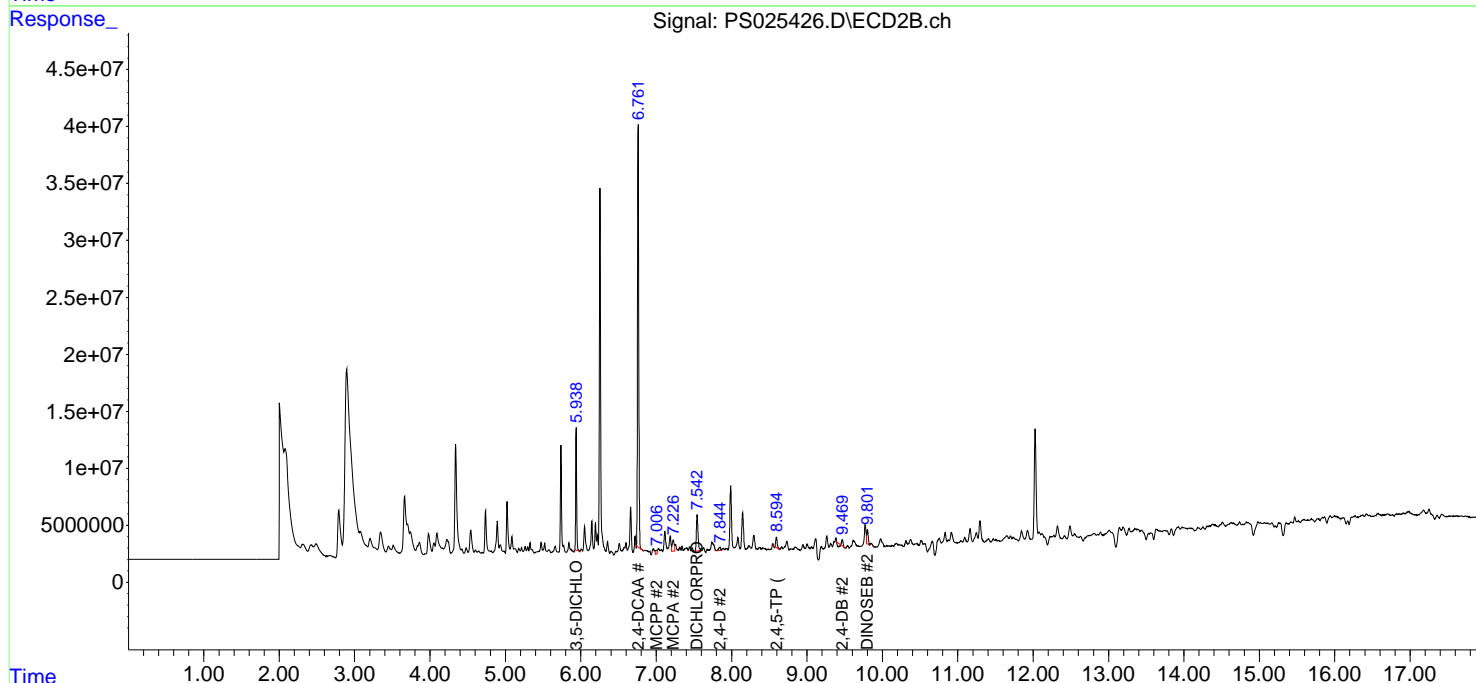
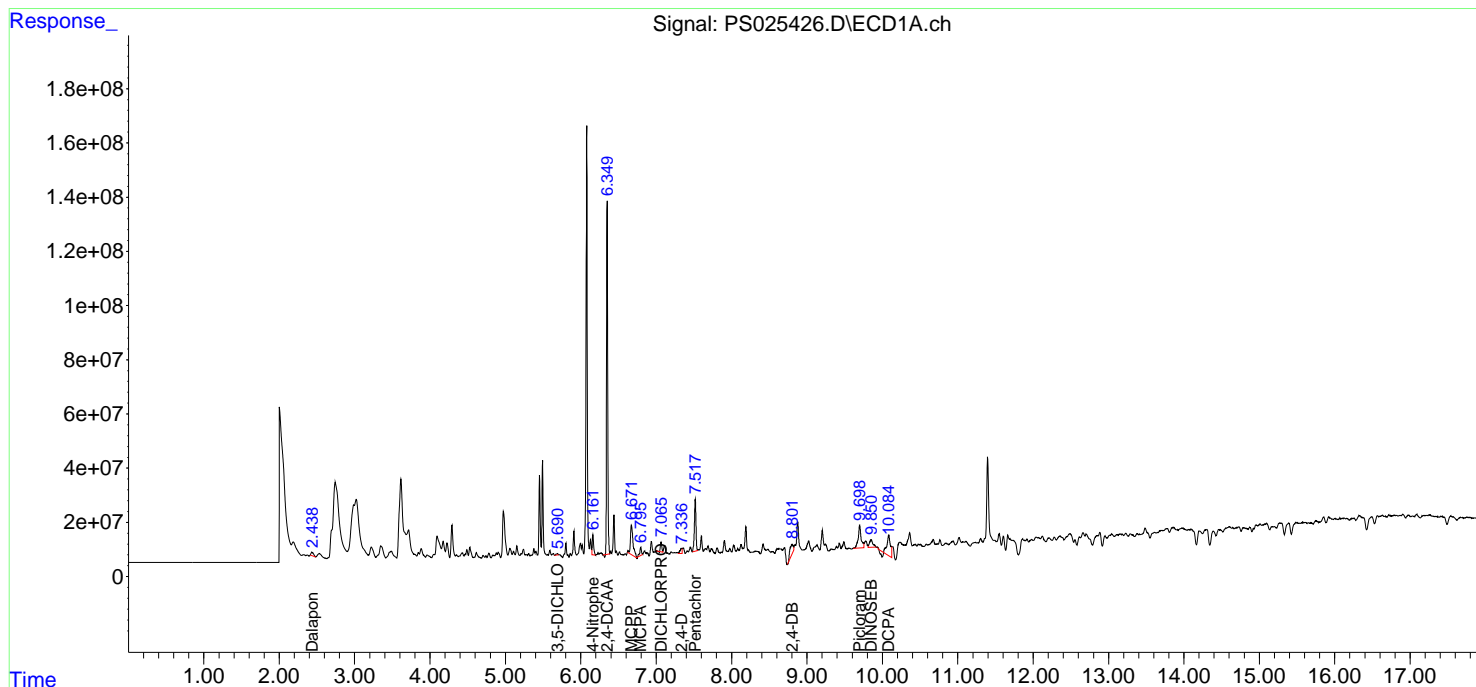
(f)=RT Delta > 1/2 Window (#)=Amounts differ by > 25% (m)=manual int.

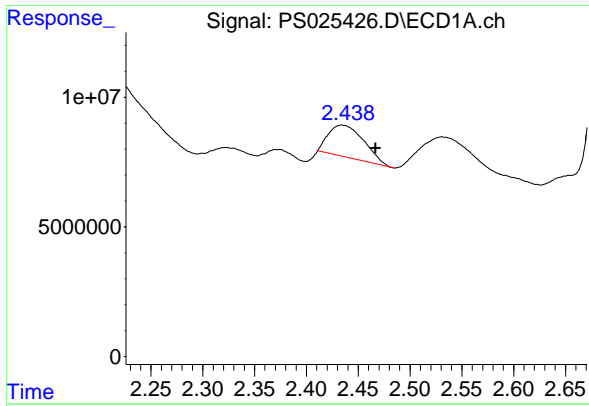
Data Path : Z:\pestpcbsrv\HPCHEM1\ECD_S\Data\PS010224\
 Data File : PS025426.D
 Signal(s) : Signal #1: ECD1A.ch Signal #2: ECD2B.ch
 Acq On : 03 Jan 2024 03:30
 Operator : AR\AJ
 Sample : 05994-04
 Misc :
 ALS Vial : 35 Sample Multiplier: 1

Instrument :
 ECD_S
 ClientSampleId :
 WC-B-COMP

Integration File signal 1: autoint1.e
 Integration File signal 2: autoint2.e
 Quant Time: Jan 03 05:06:05 2024
 Quant Method : Z:\pestpcbsrv\HPCHEM1\ECD_S\Method\PS122823.M
 Quant Title : 8080.M
 QLast Update : Thu Dec 28 17:23:18 2023
 Response via : Initial Calibration
 Integrator: ChemStation

Volume Inj. : 2 µl
 Signal #1 Phase : Rtx-CLPesticides Signal #2 Phase: Rtx-CLPesticides2
 Signal #1 Info : 30M x 0.32mm x0.5 Signal #2 Info : 30M x 0.32mm x 0.25µm

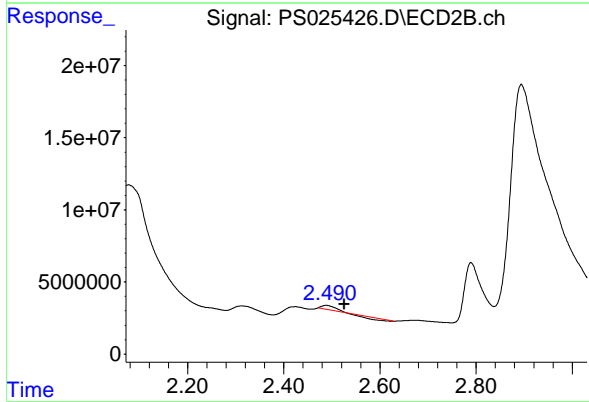




#1 Dalapon

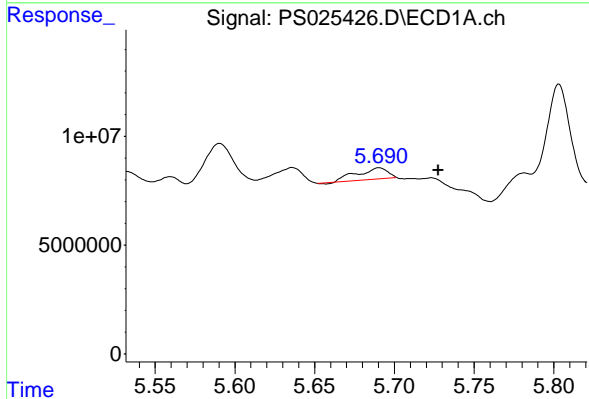
R.T.: 2.434 min
 Delta R.T.: -0.033 min
 Response: 29087271
 Conc: 9.40 ng/ml

Instrument : ECD_S
 ClientSampleId : WC-B-COMP



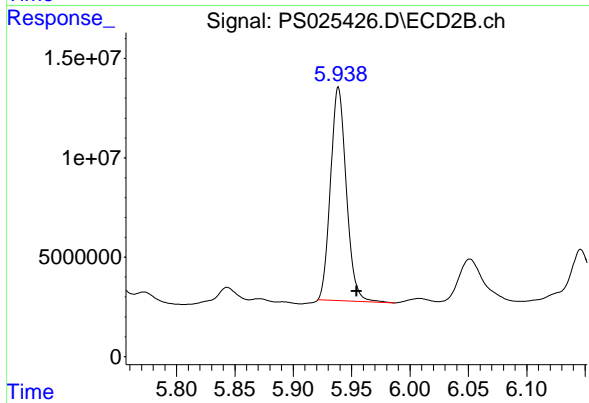
#1 Dalapon

R.T.: 2.489 min
 Delta R.T.: -0.037 min
 Response: 1021951
 Conc: N.D.



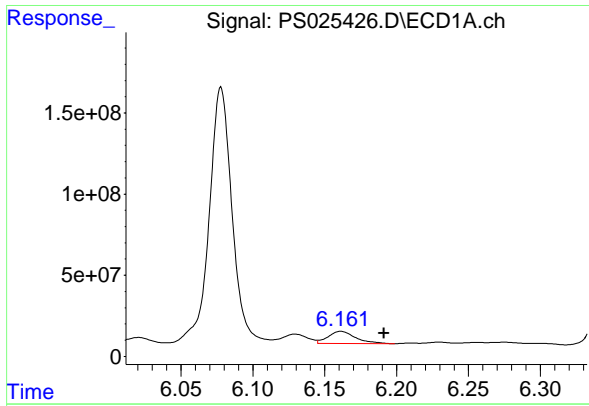
#2 3,5-DICHLOROBENZOIC ACID

R.T.: 5.690 min
 Delta R.T.: -0.037 min
 Response: 7327714
 Conc: 2.15 ng/ml



#2 3,5-DICHLOROBENZOIC ACID

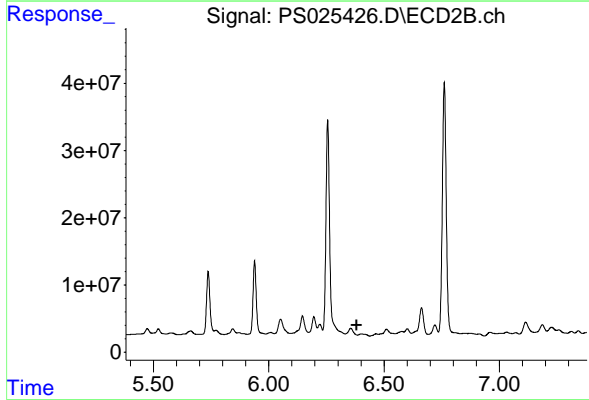
R.T.: 5.939 min
 Delta R.T.: -0.016 min
 Response: 101301775
 Conc: 90.57 ng/ml



#3 4-Nitrophenol

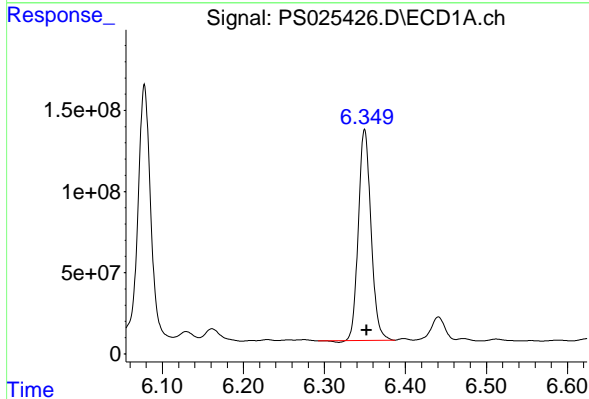
R.T.: 6.161 min
 Delta R.T.: -0.030 min
 Response: 99142883
 Conc: 64.00 ng/ml

Instrument :
 ECD_S
 ClientSampleId :
 WC-B-COMP



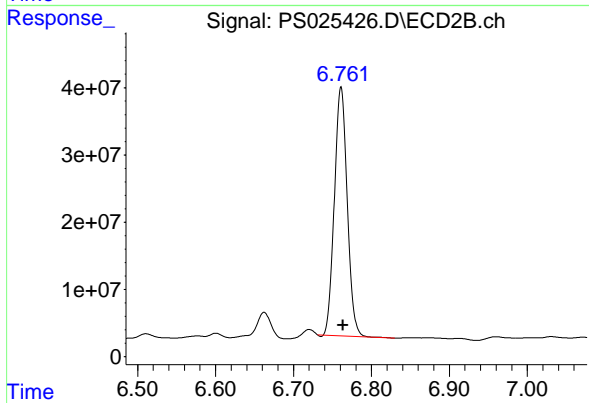
#3 4-Nitrophenol

R.T.: 6.401 min
 Delta R.T.: 0.021 min
 Response: -4804429
 Conc: N.D.



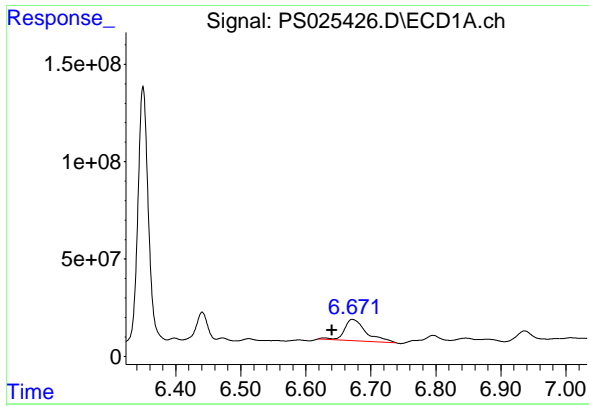
#4 2,4-DCAA

R.T.: 6.350 min
 Delta R.T.: -0.002 min
 Response: 1404137567
 Conc: 626.62 ng/ml



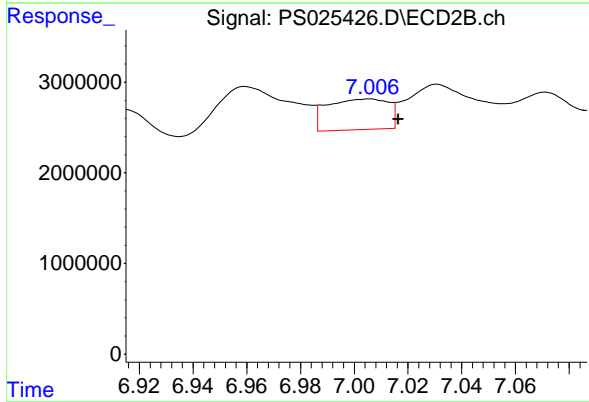
#4 2,4-DCAA

R.T.: 6.761 min
 Delta R.T.: -0.003 min
 Response: 424430825
 Conc: 597.98 ng/ml

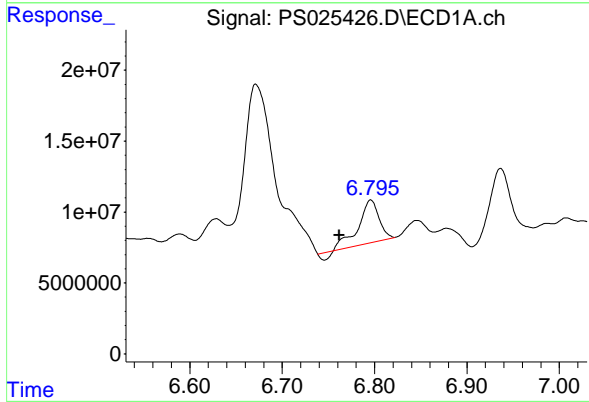


#6 MCP
 R.T.: 6.672 min
 Delta R.T.: 0.032 min
 Response: 251053221
 Conc: 37.32 ug/ml

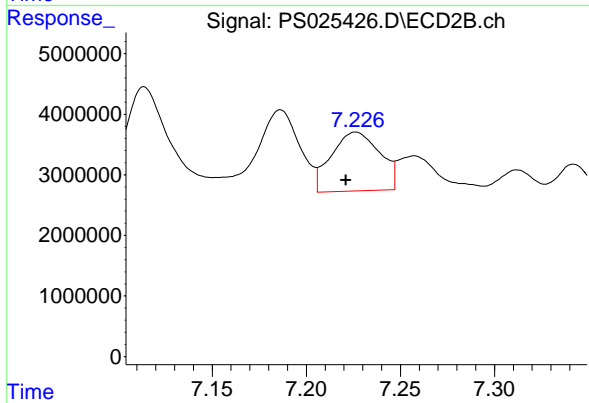
Instrument :
 ECD_S
 ClientSampleId :
 WC-B-COMP



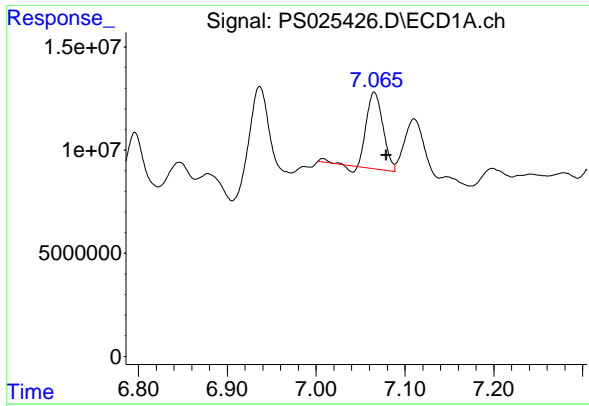
#6 MCP
 R.T.: 7.006 min
 Delta R.T.: -0.011 min
 Response: 5347930
 Conc: 2.68 ug/ml



#7 MCPA
 R.T.: 6.796 min
 Delta R.T.: 0.034 min
 Response: 44274448
 Conc: 4.67 ug/ml



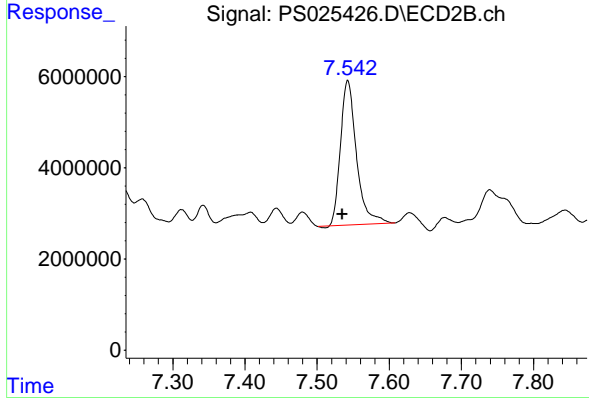
#7 MCPA
 R.T.: 7.226 min
 Delta R.T.: 0.005 min
 Response: 17409019
 Conc: 5.54 ug/ml



#8 DICHLORPROP

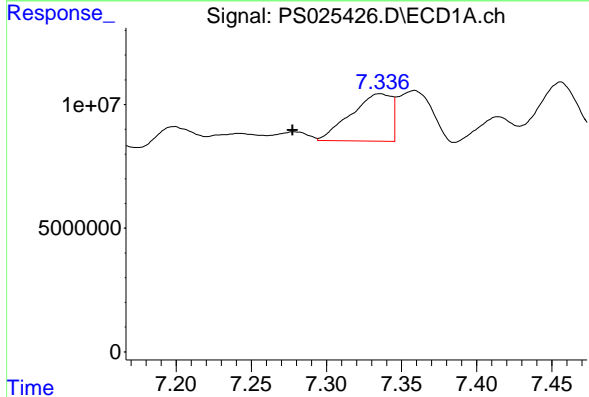
R.T.: 7.066 min
 Delta R.T.: -0.013 min
 Response: 47607762
 Conc: 18.51 ng/ml

Instrument :
 ECD_S
 ClientSampleId :
 WC-B-COMP



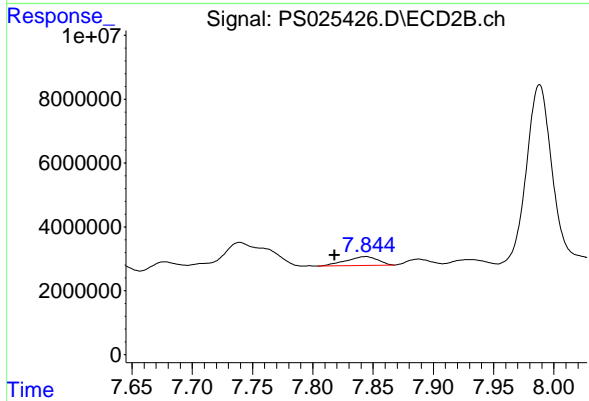
#8 DICHLORPROP

R.T.: 7.542 min
 Delta R.T.: 0.008 min
 Response: 48879637
 Conc: 63.19 ng/ml



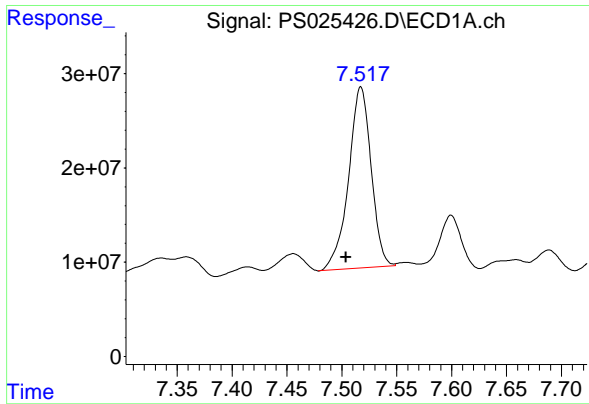
#9 2,4-D

R.T.: 7.336 min
 Delta R.T.: 0.058 min
 Response: 36139818
 Conc: 11.67 ng/ml



#9 2,4-D

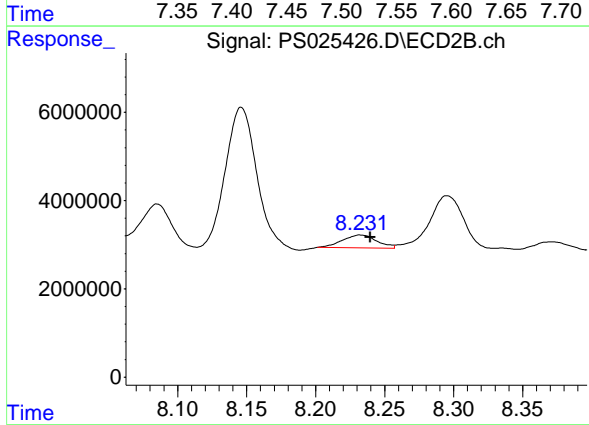
R.T.: 7.844 min
 Delta R.T.: 0.025 min
 Response: 4993150
 Conc: 5.21 ng/ml



#10 Pentachlorophenol

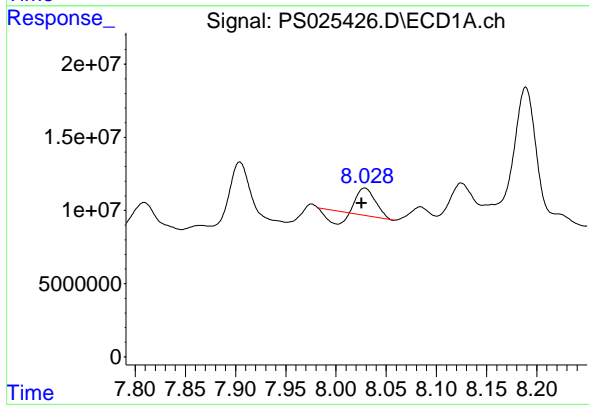
R.T.: 7.517 min
 Delta R.T.: 0.014 min
 Response: 275307082
 Conc: 7.81 ng/ml

Instrument :
 ECD_S
 ClientSampleId :
 WC-B-COMP



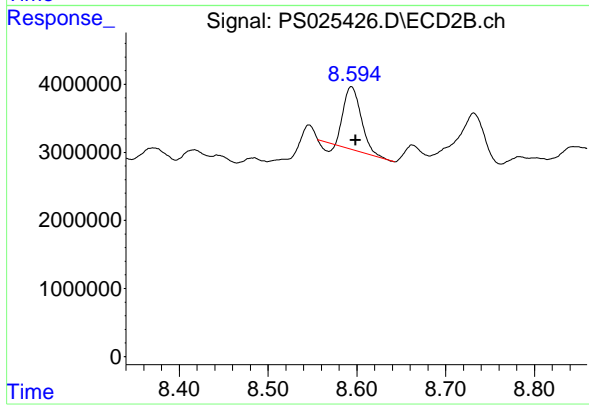
#10 Pentachlorophenol

R.T.: 8.232 min
 Delta R.T.: -0.007 min
 Response: 5105922
 Conc: N.D.



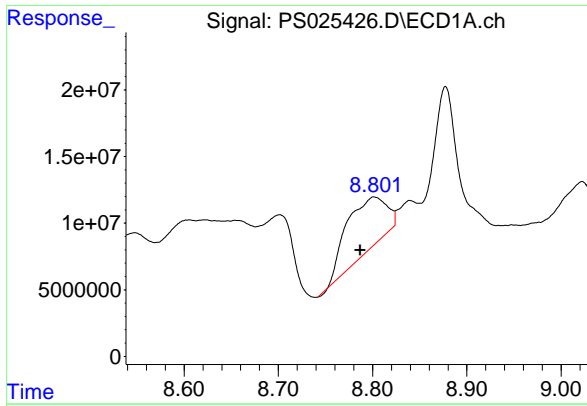
#11 2,4,5-TP (SILVEX)

R.T.: 8.029 min
 Delta R.T.: 0.003 min
 Response: 13441695
 Conc: N.D.



#11 2,4,5-TP (SILVEX)

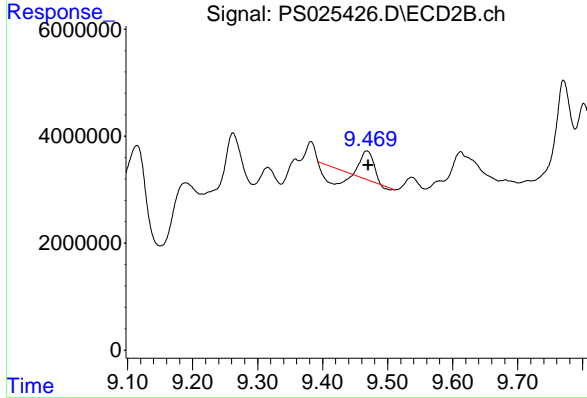
R.T.: 8.594 min
 Delta R.T.: -0.005 min
 Response: 11836351
 Conc: 2.74 ng/ml



#13 2,4-DB

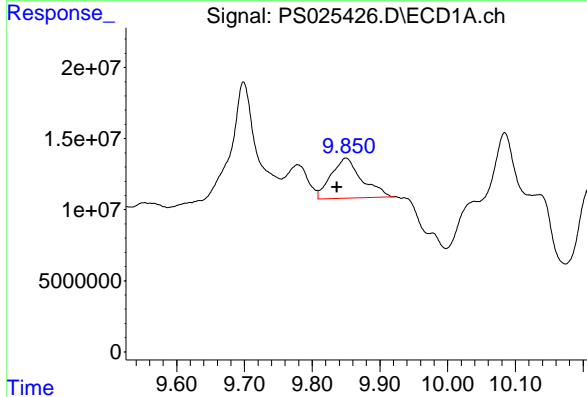
R.T.: 8.802 min
 Delta R.T.: 0.015 min
 Response: 116272454
 Conc: 48.22 ng/ml

Instrument :
 ECD_S
 ClientSampleId :
 WC-B-COMP



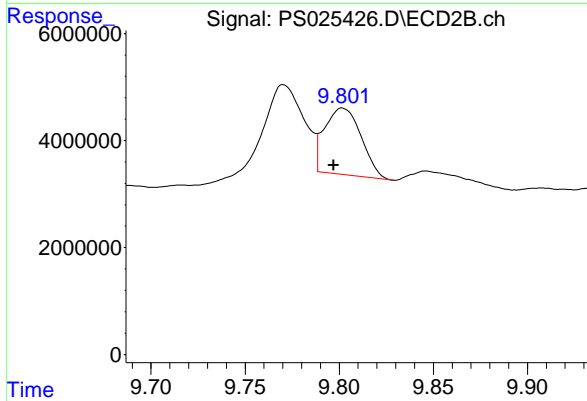
#13 2,4-DB

R.T.: 9.468 min
 Delta R.T.: -0.002 min
 Response: 2054940
 Conc: 3.75 ng/ml



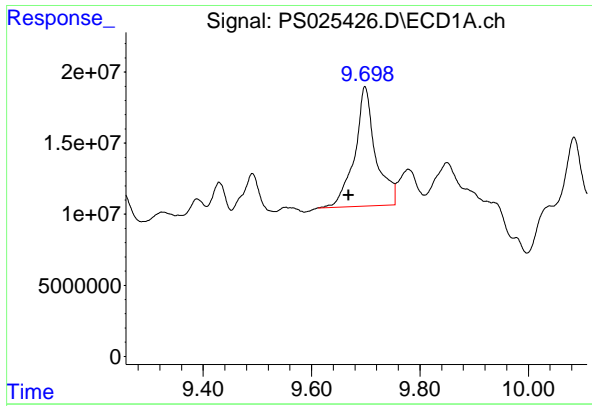
#14 DINOSEB

R.T.: 9.850 min
 Delta R.T.: 0.013 min
 Response: 89169404
 Conc: 7.76 ng/ml



#14 DINOSEB

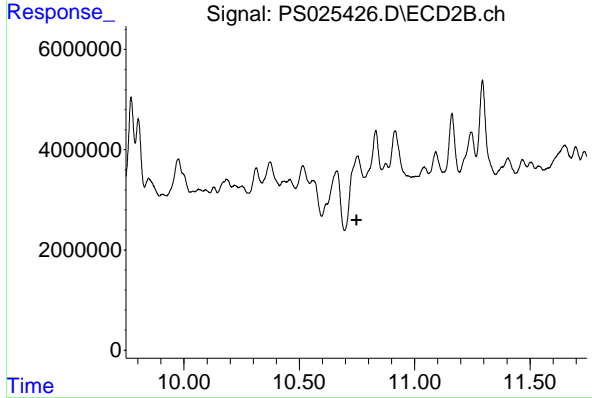
R.T.: 9.802 min
 Delta R.T.: 0.005 min
 Response: 16771400
 Conc: 5.28 ng/ml



#15 Picloram

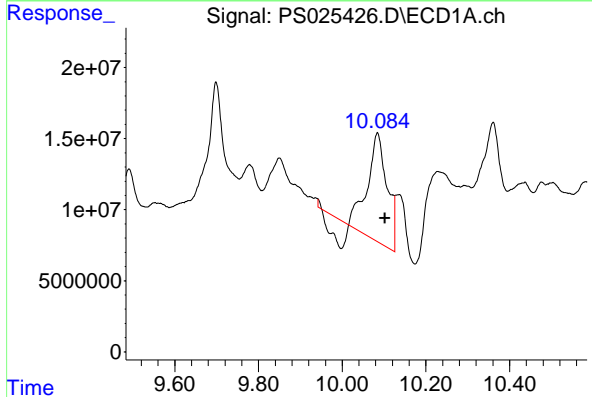
R.T.: 9.699 min
 Delta R.T.: 0.030 min
 Response: 225645022
 Conc: 10.80 ng/ml

Instrument :
 ECD_S
 ClientSampleId :
 WC-B-COMP



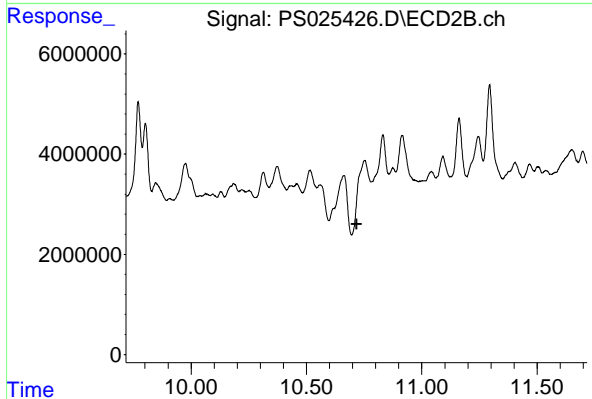
#15 Picloram

R.T.: 10.752 min
 Delta R.T.: 0.005 min
 Response: -3676900
 Conc: N.D.



#16 DCPA

R.T.: 10.084 min
 Delta R.T.: -0.018 min
 Response: 217684032
 Conc: 11.45 ng/ml



#16 DCPA

R.T.: 10.752 min
 Delta R.T.: 0.035 min
 Response: -3676900
 Conc: N.D.