

Data Path : Z:\pestpcbsrv\HPCHEM1\ECD_S\Data\PS010524\
 Data File : PS025452.D
 Signal(s) : Signal #1: ECD1A.ch Signal #2: ECD2B.ch
 Acq On : 05 Jan 2024 11:24
 Operator : AR\AJ
 Sample : PB158048TB
 Misc :
 ALS Vial : 4 Sample Multiplier: 1

Instrument :
 ECD_S
 ClientSampleId :
 PB158048TB

Integration File signal 1: autoint1.e
 Integration File signal 2: autoint2.e
 Quant Time: Jan 05 23:26:23 2024
 Quant Method : Z:\pestpcbsrv\HPCHEM1\ECD_S\Method\PS122823.M
 Quant Title : 8080.M
 QLast Update : Thu Dec 28 17:23:18 2023
 Response via : Initial Calibration
 Integrator: ChemStation

Volume Inj. : 2 µl
 Signal #1 Phase : Rtx-CLPesticides Signal #2 Phase: Rtx-CLPesticides2
 Signal #1 Info : 30M x 0.32mm x0.5 Signal #2 Info : 30M x 0.32mm x 0.25µm

| Compound | RT#1 | RT#2 | Resp#1 | Resp#2 | ng/ml | ng/ml |
|-----------------------------|--------|--------|----------|----------|---------|-----------|
| ----- | | | | | | |
| System Monitoring Compounds | | | | | | |
| 4) S 2,4-DCAA | 6.354 | 6.759 | 1144.5E6 | 265.6E6 | 510.772 | 374.248 # |
| Target Compounds | | | | | | |
| 1) T Dalapon | 2.438 | 2.492 | 50985474 | 17634866 | 16.476 | 15.344 |
| 2) T 3,5-DICHL... | 5.724 | 5.970 | 39000412 | 1102281 | 11.467 | <MDL # |
| 5) T DICAMBA | 0.000 | 6.915 | 0 | 1937739 | N.D. | <MDL |
| 6) T MCPP | 6.676 | 7.008 | 48269095 | 3214804 | 7.174 | 1.611 # |
| 7) T MCPA | 0.000 | 7.212 | 0 | 5497160 | N.D. | 1.749 |
| 8) T DICHLORPROP | 7.044 | 7.542 | 25191306 | 21333580 | 9.792 | 27.579 # |
| 9) T 2,4-D | 7.334f | 7.820 | 40855597 | 2283565 | 13.188 | 2.381 # |
| 10) T Pentachlo... | 7.504 | 8.230 | 29935987 | 4243077 | <MDL | <MDL # |
| 11) T 2,4,5-TP ... | 8.041 | 8.595 | 20158866 | -3610165 | 1.326 | N.D. # |
| 12) T 2,4,5-T | 8.226f | 8.966 | 62558711 | 1678304 | 4.171 | <MDL # |
| 13) T 2,4-DB | 8.804 | 9.467 | 122.3E6 | 4574708 | 50.703 | 8.339 # |
| 14) T DINOSEB | 9.787f | 9.804 | 158.3E6 | 3436090 | 13.768 | 1.082 # |
| 15) T Picloram | 9.690 | 10.754 | 388.5E6 | 118.0E6 | 18.595 | 17.319 |
| 16) T DCPA | 10.104 | 10.754 | -8560089 | 118.0E6 | N.D. | 22.096 |

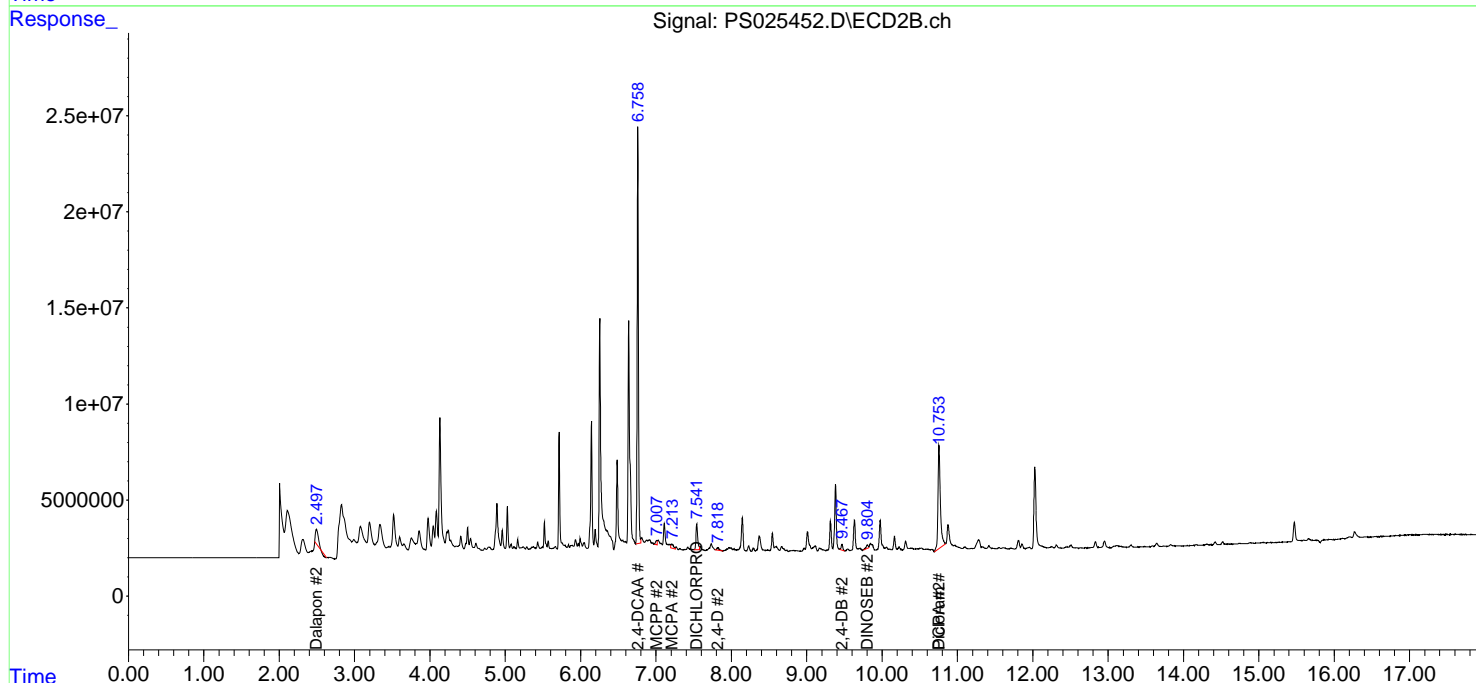
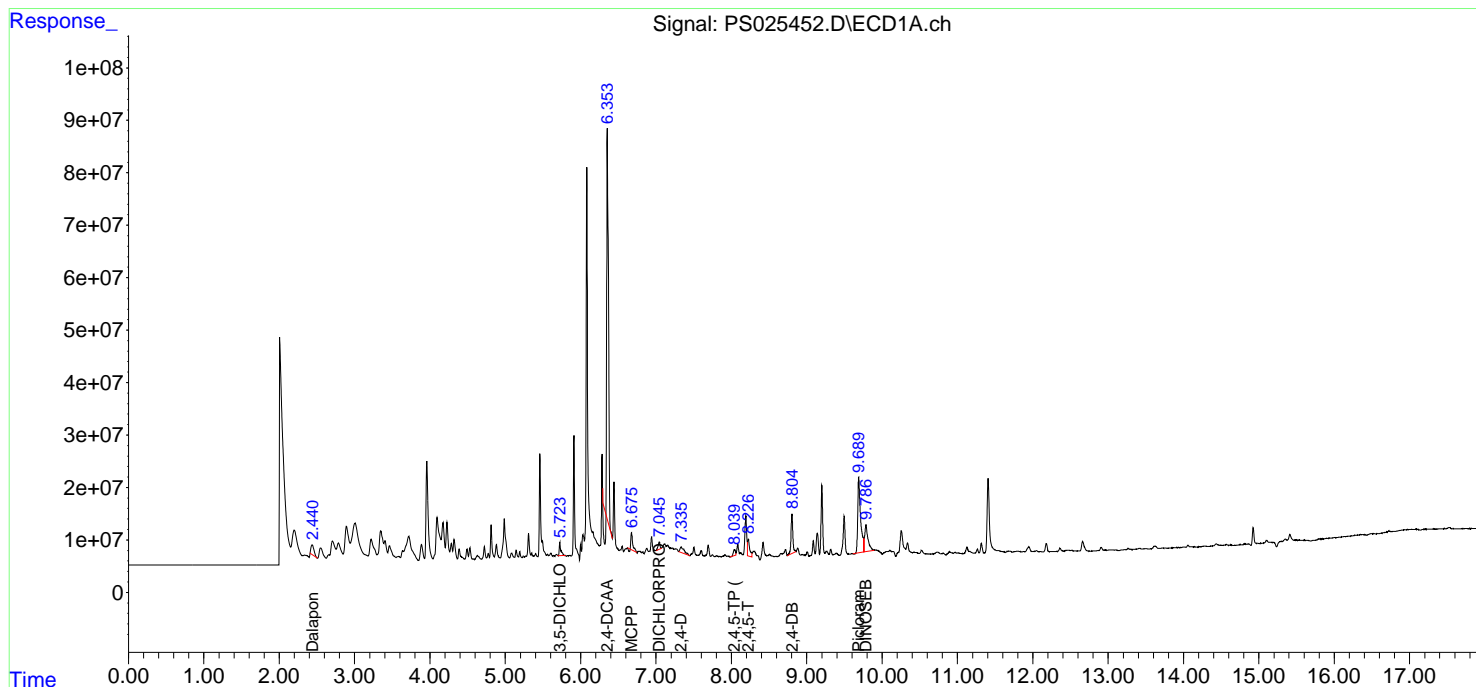
(f)=RT Delta > 1/2 Window (#)=Amounts differ by > 25% (m)=manual int.

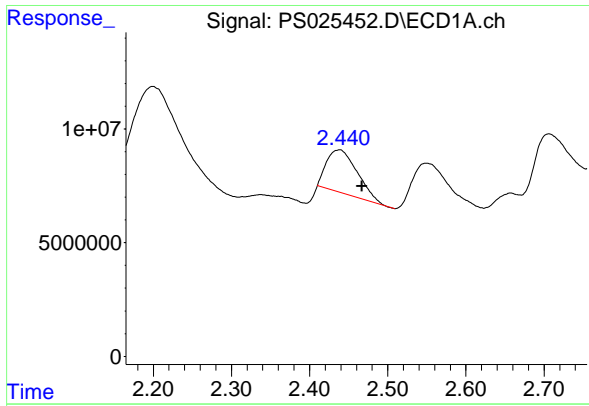
Data Path : Z:\pestpcbsrv\HPCHEM1\ECD_S\Data\PS010524\
 Data File : PS025452.D
 Signal(s) : Signal #1: ECD1A.ch Signal #2: ECD2B.ch
 Acq On : 05 Jan 2024 11:24
 Operator : AR\AJ
 Sample : PB158048TB
 Misc :
 ALS Vial : 4 Sample Multiplier: 1

Instrument :
 ECD_S
 ClientSampleId :
 PB158048TB

Integration File signal 1: autoint1.e
 Integration File signal 2: autoint2.e
 Quant Time: Jan 05 23:26:23 2024
 Quant Method : Z:\pestpcbsrv\HPCHEM1\ECD_S\Method\PS122823.M
 Quant Title : 8080.M
 QLast Update : Thu Dec 28 17:23:18 2023
 Response via : Initial Calibration
 Integrator: ChemStation

Volume Inj. : 2 µl
 Signal #1 Phase : Rtx-CLPesticides Signal #2 Phase: Rtx-CLPesticides2
 Signal #1 Info : 30M x 0.32mm x0.5 Signal #2 Info : 30M x 0.32mm x 0.25µm

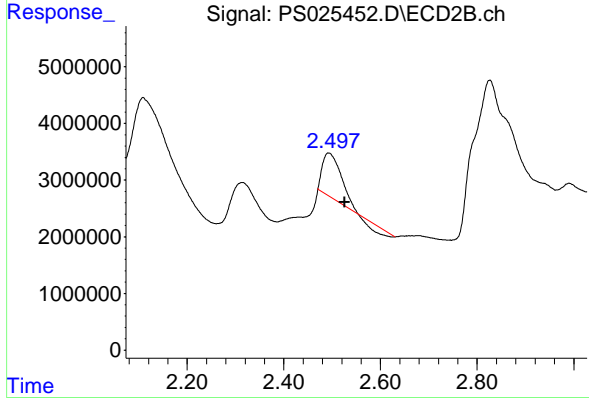




#1 Dalapon

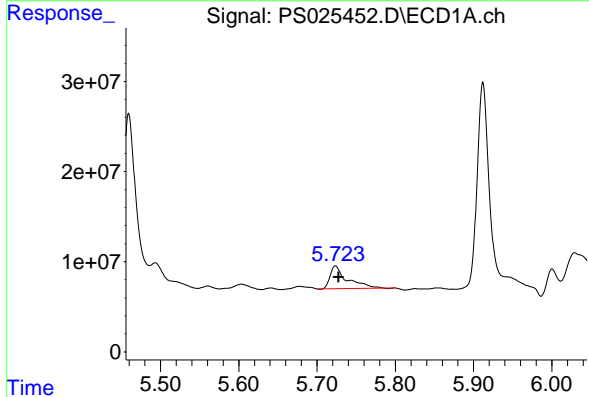
R.T.: 2.438 min
 Delta R.T.: -0.029 min
 Response: 50985474
 Conc: 16.48 ng/ml

Instrument : ECD_S
 ClientSampleId : PB158048TB



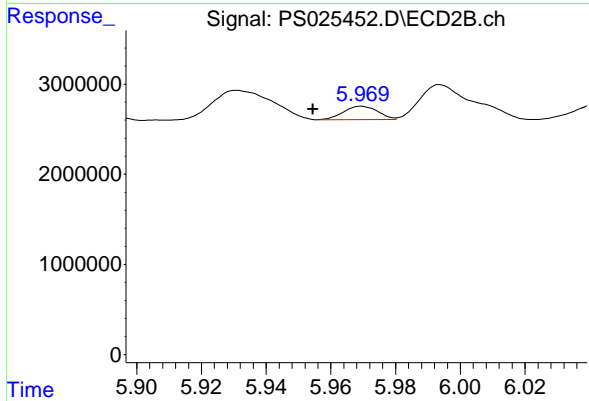
#1 Dalapon

R.T.: 2.492 min
 Delta R.T.: -0.034 min
 Response: 17634866
 Conc: 15.34 ng/ml



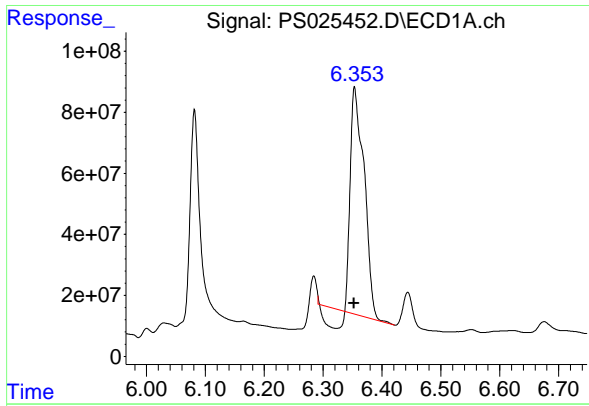
#2 3,5-DICHLOROBENZOIC ACID

R.T.: 5.724 min
 Delta R.T.: -0.004 min
 Response: 39000412
 Conc: 11.47 ng/ml



#2 3,5-DICHLOROBENZOIC ACID

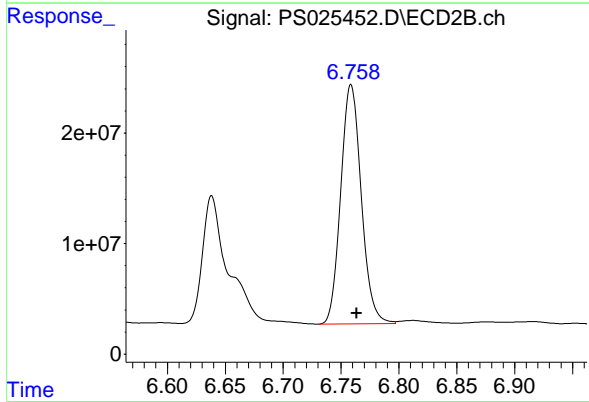
R.T.: 5.970 min
 Delta R.T.: 0.015 min
 Response: 1102281
 Conc: N.D.



#4 2,4-DCAA

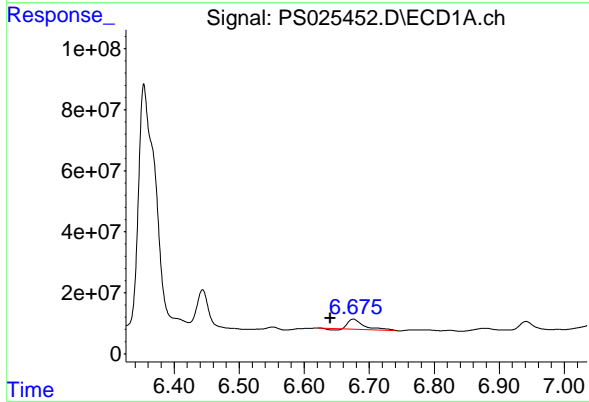
R.T.: 6.354 min
 Delta R.T.: 0.002 min
 Response: 1144538847
 Conc: 510.77 ng/ml

Instrument :
 ECD_S
 ClientSampleId :
 PB158048TB



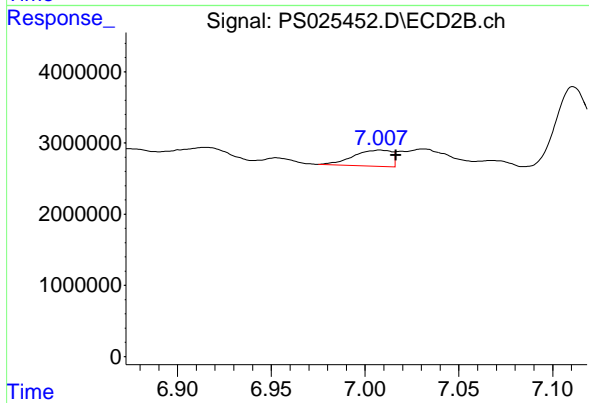
#4 2,4-DCAA

R.T.: 6.759 min
 Delta R.T.: -0.005 min
 Response: 265631006
 Conc: 374.25 ng/ml



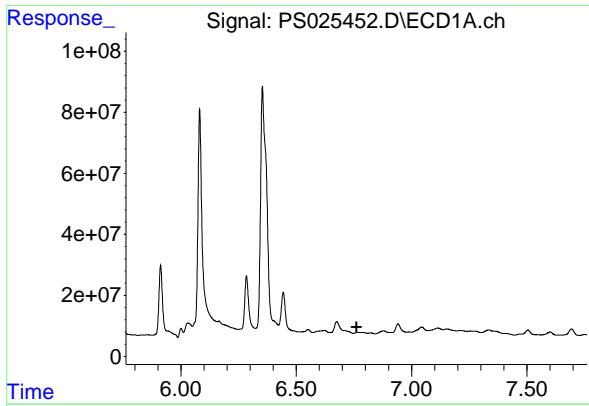
#6 MCPP

R.T.: 6.676 min
 Delta R.T.: 0.036 min
 Response: 48269095
 Conc: 7.17 ug/ml



#6 MCPP

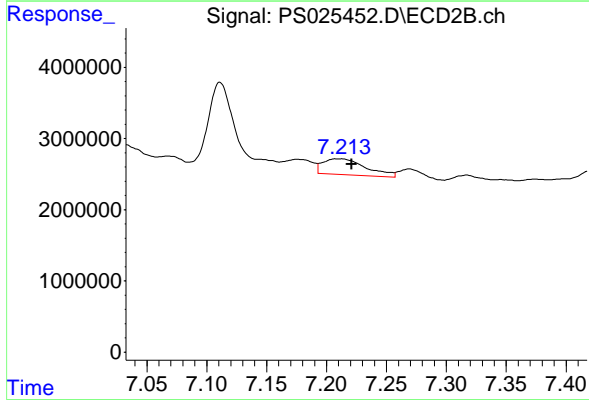
R.T.: 7.008 min
 Delta R.T.: -0.009 min
 Response: 3214804
 Conc: 1.61 ug/ml



#7 MCPA

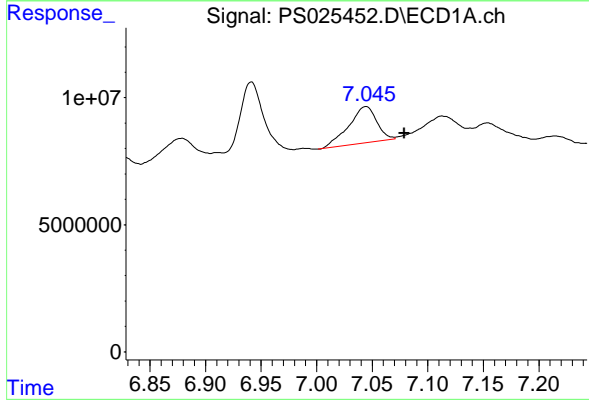
R.T.: 0.000 min
 Exp R.T.: 6.762 min
 Response: 0
 Conc: N.D.

Instrument :
 ECD_S
 ClientSampleId :
 PB158048TB



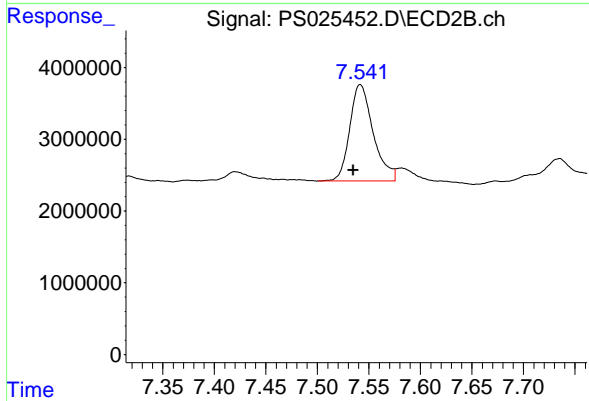
#7 MCPA

R.T.: 7.212 min
 Delta R.T.: -0.010 min
 Response: 5497160
 Conc: 1.75 ug/ml



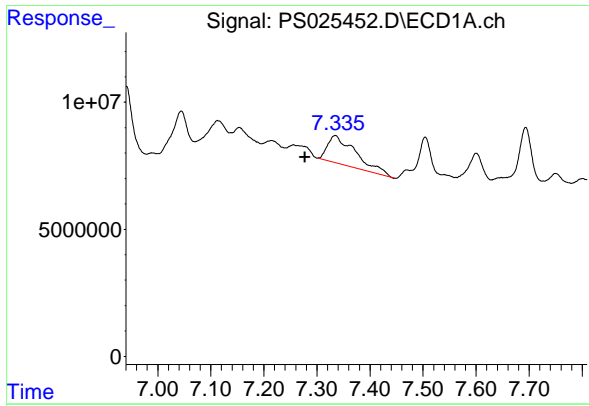
#8 DICHLORPROP

R.T.: 7.044 min
 Delta R.T.: -0.035 min
 Response: 25191306
 Conc: 9.79 ng/ml



#8 DICHLORPROP

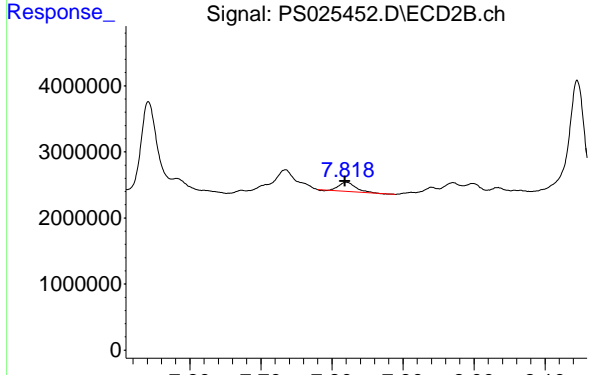
R.T.: 7.542 min
 Delta R.T.: 0.007 min
 Response: 21333580
 Conc: 27.58 ng/ml



#9 2,4-D

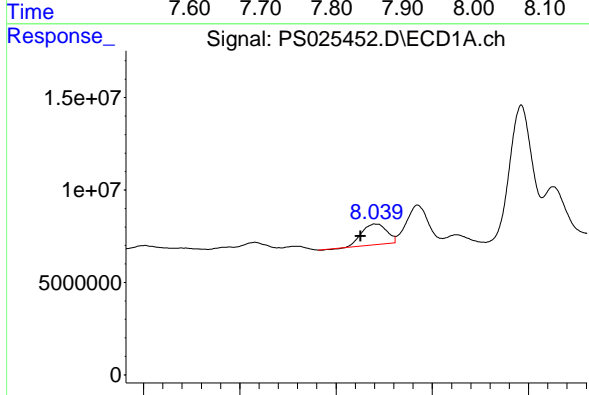
R.T.: 7.334 min
 Delta R.T.: 0.057 min
 Response: 40855597
 Conc: 13.19 ng/ml

Instrument :
 ECD_S
 ClientSampleId :
 PB158048TB



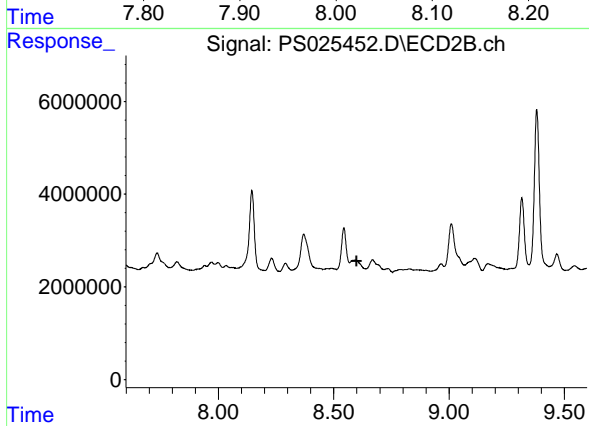
#9 2,4-D

R.T.: 7.820 min
 Delta R.T.: 0.001 min
 Response: 2283565
 Conc: 2.38 ng/ml



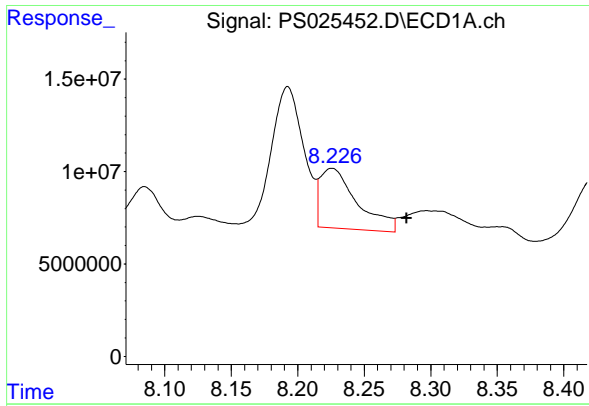
#11 2,4,5-TP (SILVEX)

R.T.: 8.041 min
 Delta R.T.: 0.016 min
 Response: 20158866
 Conc: 1.33 ng/ml



#11 2,4,5-TP (SILVEX)

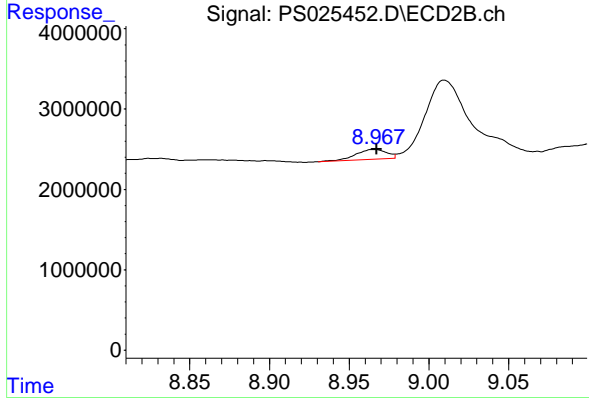
R.T.: 8.595 min
 Delta R.T.: -0.004 min
 Response: -3610165
 Conc: N.D.



#12 2,4,5-T

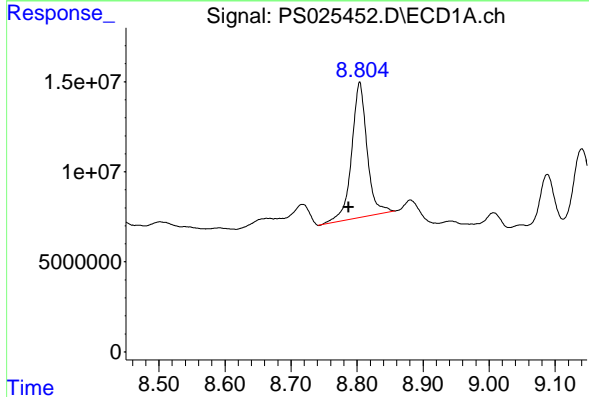
R.T.: 8.226 min
 Delta R.T.: -0.056 min
 Response: 62558711
 Conc: 4.17 ng/ml

Instrument : ECD_S
 ClientSampleId : PB158048TB



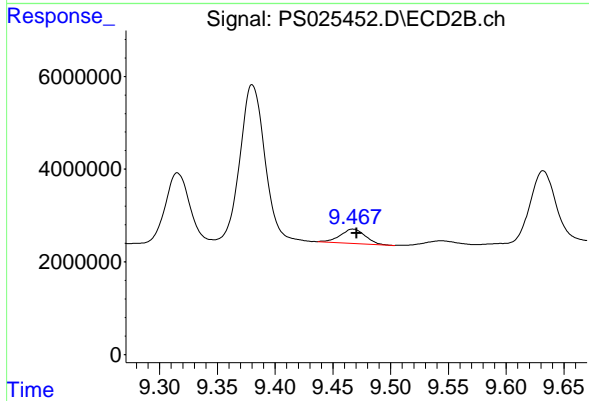
#12 2,4,5-T

R.T.: 8.966 min
 Delta R.T.: -0.001 min
 Response: 1678304
 Conc: N.D.



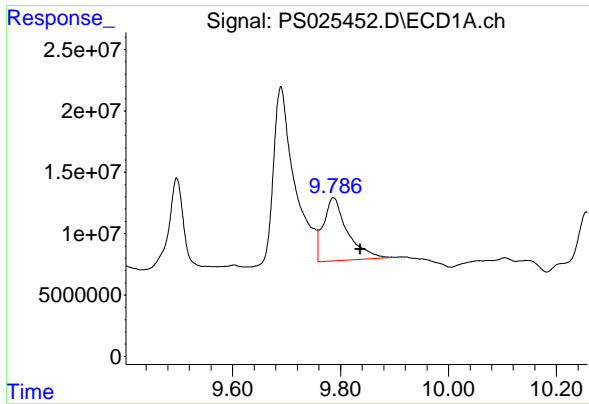
#13 2,4-DB

R.T.: 8.804 min
 Delta R.T.: 0.017 min
 Response: 122263519
 Conc: 50.70 ng/ml



#13 2,4-DB

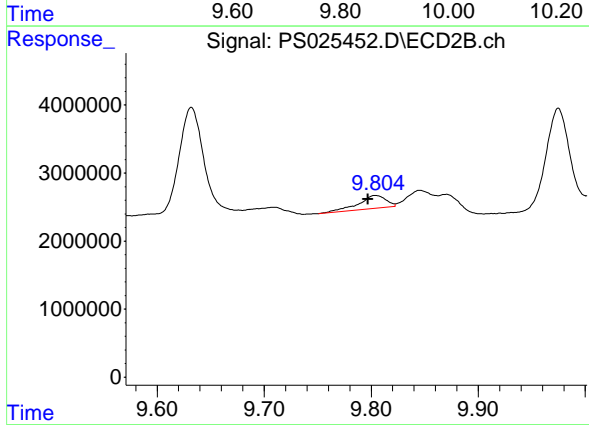
R.T.: 9.467 min
 Delta R.T.: -0.003 min
 Response: 4574708
 Conc: 8.34 ng/ml



#14 DINOSEB

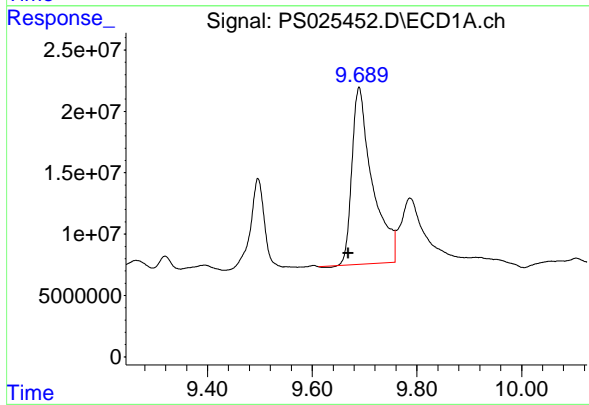
R.T.: 9.787 min
 Delta R.T.: -0.050 min
 Response: 158257546
 Conc: 13.77 ng/ml

Instrument :
 ECD_S
 ClientSampleId :
 PB158048TB



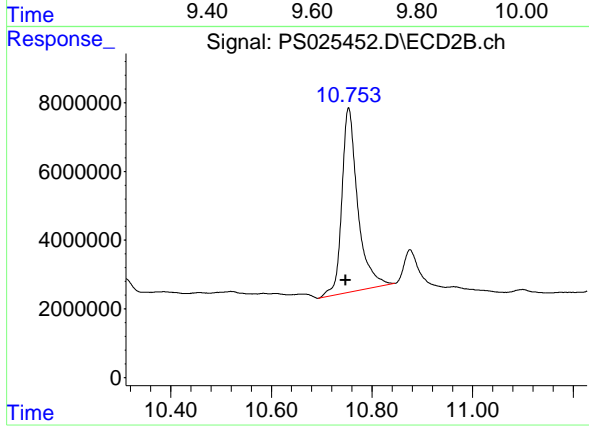
#14 DINOSEB

R.T.: 9.804 min
 Delta R.T.: 0.007 min
 Response: 3436090
 Conc: 1.08 ng/ml



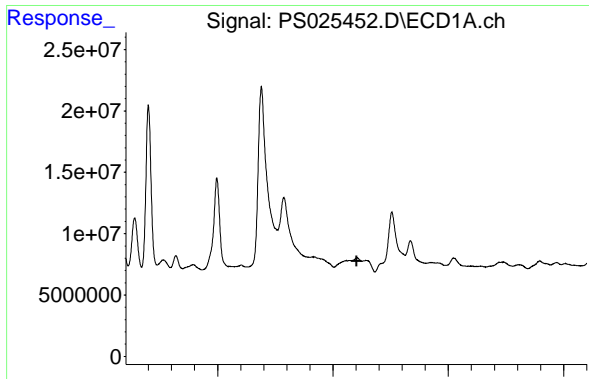
#15 Picloram

R.T.: 9.690 min
 Delta R.T.: 0.021 min
 Response: 388507120
 Conc: 18.60 ng/ml



#15 Picloram

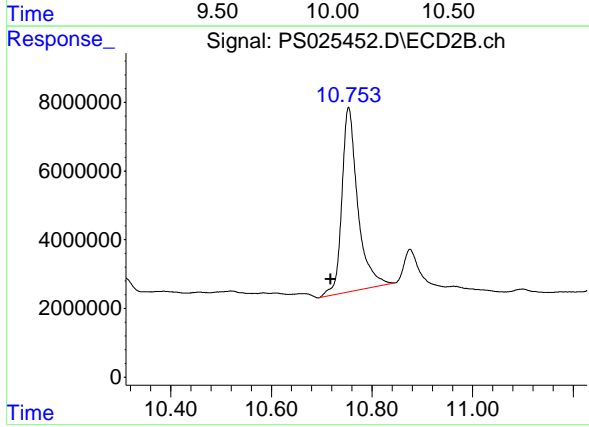
R.T.: 10.754 min
 Delta R.T.: 0.006 min
 Response: 117998552
 Conc: 17.32 ng/ml



#16 DCPA

R.T.: 10.104 min
Delta R.T.: 0.002 min
Response: -8560089
Conc: N.D.

Instrument :
ECD_S
ClientSampleId :
PB158048TB



#16 DCPA

R.T.: 10.754 min
Delta R.T.: 0.036 min
Response: 117998552
Conc: 22.10 ng/ml