

Data Path : Z:\pestpcbsrv\HPCHEM1\ECD\_S\Data\PS010524\  
 Data File : PS025455.D  
 Signal(s) : Signal #1: ECD1A.ch Signal #2: ECD2B.ch  
 Acq On : 05 Jan 2024 12:36  
 Operator : AR\AJ  
 Sample : I.BLK  
 Misc :  
 ALS Vial : 2 Sample Multiplier: 1

Instrument :  
 ECD\_S  
 ClientSampleId :  
 I.BLK

Integration File signal 1: autoint1.e  
 Integration File signal 2: autoint2.e  
 Quant Time: Jan 05 23:27:14 2024  
 Quant Method : Z:\pestpcbsrv\HPCHEM1\ECD\_S\Method\PS122823.M  
 Quant Title : 8080.M  
 QLast Update : Thu Dec 28 17:23:18 2023  
 Response via : Initial Calibration  
 Integrator: ChemStation

Volume Inj. : 2 µl  
 Signal #1 Phase : Rtx-CLPesticides Signal #2 Phase: Rtx-CLPesticides2  
 Signal #1 Info : 30M x 0.32mm x0.5 Signal #2 Info : 30M x 0.32mm x 0.25µm

Compound	RT#1	RT#2	Resp#1	Resp#2	ng/ml	ng/ml
-----						
System Monitoring Compounds						
4) S 2,4-DCAA	6.352	6.761	1119.5E6	355.4E6	499.617	500.757
Target Compounds						
1) T Dalapon	0.000	2.561	0	2784555	N.D.	2.423
2) T 3,5-DICHL...	5.693	0.000	3593563	0	1.057	N.D. #
3) T 4-Nitroph...	0.000	6.360	0	478553	N.D.	<MDL
5) T DICAMBA	0.000	6.959	0	4005521	N.D.	1.323
6) T MCPP	0.000	6.959f	0	4005521	N.D.	2.007
7) T MCPA	0.000	7.154f	0	15702769	N.D.	4.996
8) T DICHLORPROP	0.000	7.566	0	2856716	N.D.	3.693
9) T 2,4-D	7.249	0.000	29766268	0	9.609	N.D. #
15) T Picloram	0.000	10.787	0	722118	N.D.	<MDL
16) T DCPA	0.000	10.787f	0	722118	N.D.	<MDL

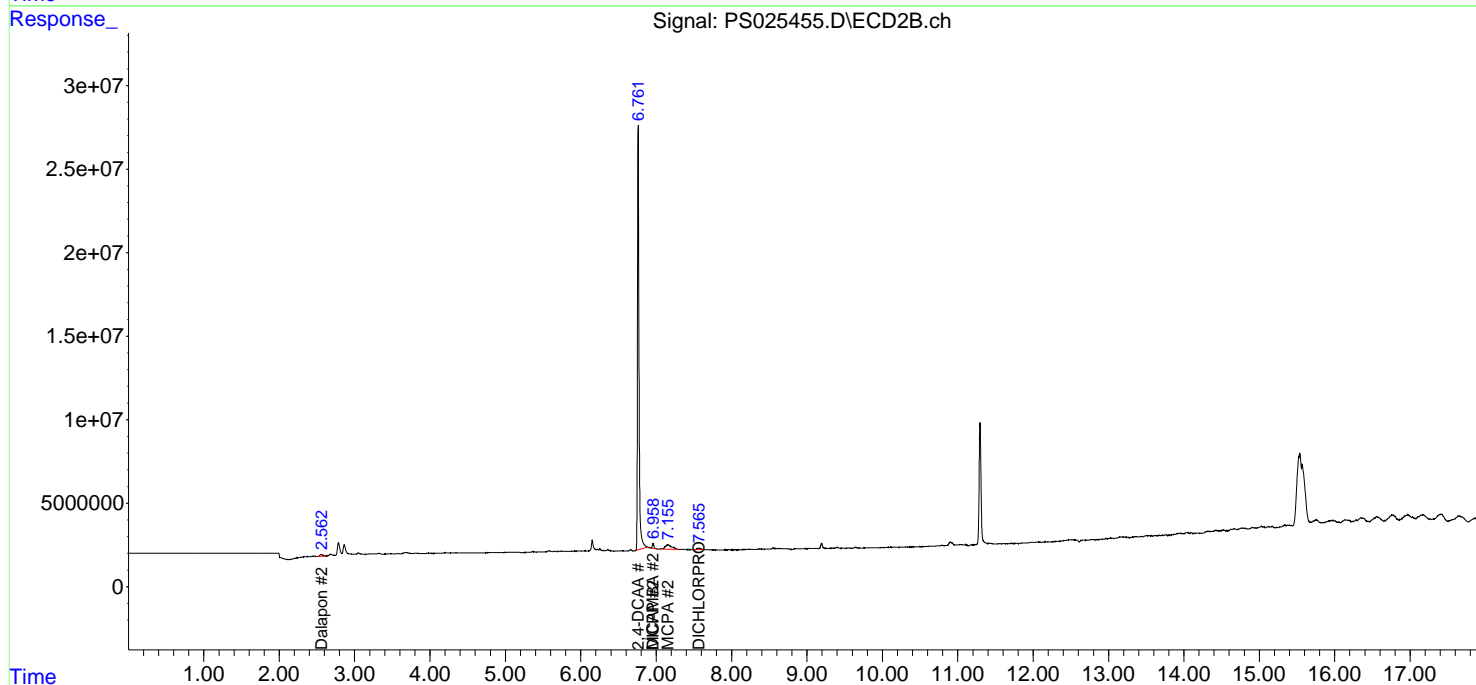
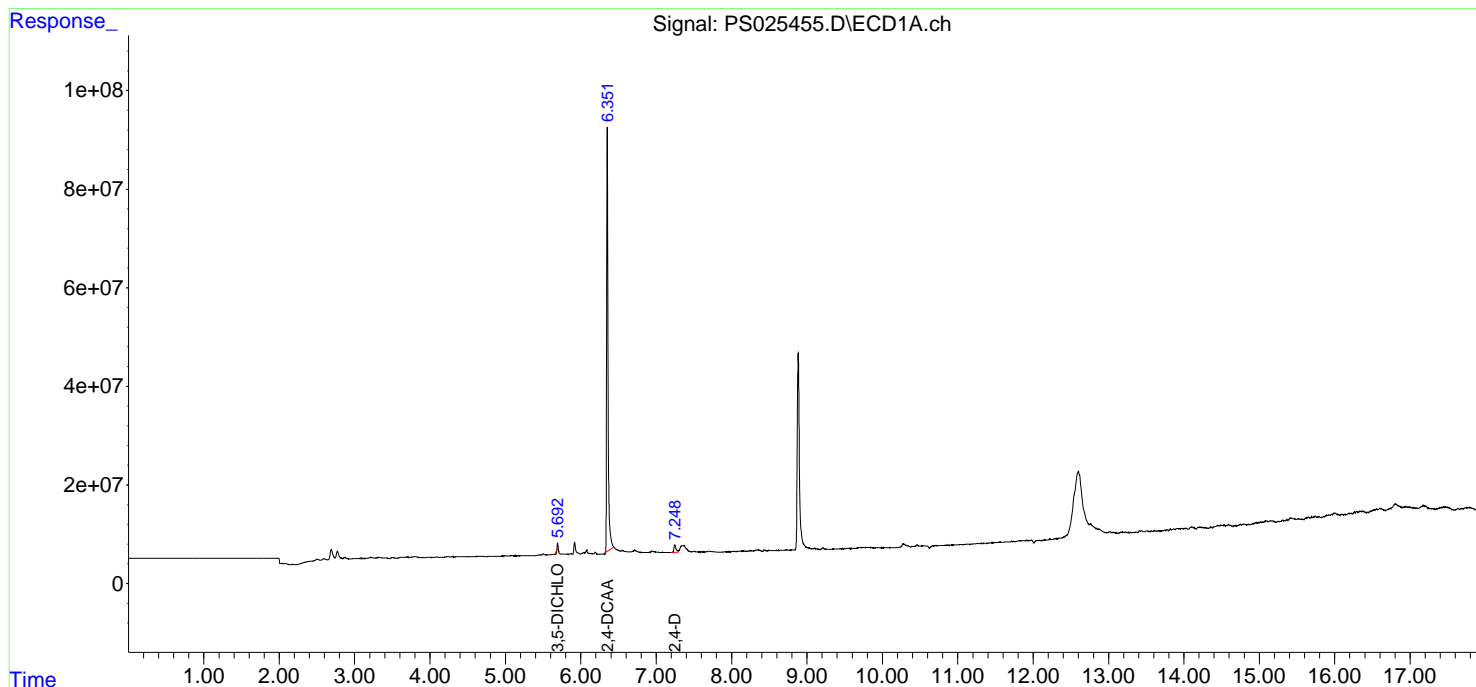
(f)=RT Delta > 1/2 Window (#)=Amounts differ by > 25% (m)=manual int.

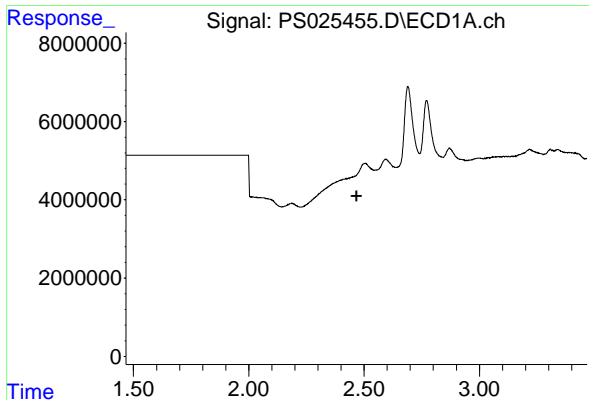
Data Path : Z:\pestpcbsrv\HPCHEM1\ECD\_S\Data\PS010524\  
 Data File : PS025455.D  
 Signal(s) : Signal #1: ECD1A.ch Signal #2: ECD2B.ch  
 Acq On : 05 Jan 2024 12:36  
 Operator : AR\AJ  
 Sample : I.BLK  
 Misc :  
 ALS Vial : 2 Sample Multiplier: 1

Instrument :  
 ECD\_S  
 ClientSampleId :  
 I.BLK

Integration File signal 1: autoint1.e  
 Integration File signal 2: autoint2.e  
 Quant Time: Jan 05 23:27:14 2024  
 Quant Method : Z:\pestpcbsrv\HPCHEM1\ECD\_S\Method\PS122823.M  
 Quant Title : 8080.M  
 QLast Update : Thu Dec 28 17:23:18 2023  
 Response via : Initial Calibration  
 Integrator: ChemStation

Volume Inj. : 2 µl  
 Signal #1 Phase : Rtx-CLPesticides Signal #2 Phase: Rtx-CLPesticides2  
 Signal #1 Info : 30M x 0.32mm x0.5 Signal #2 Info : 30M x 0.32mm x 0.25µm

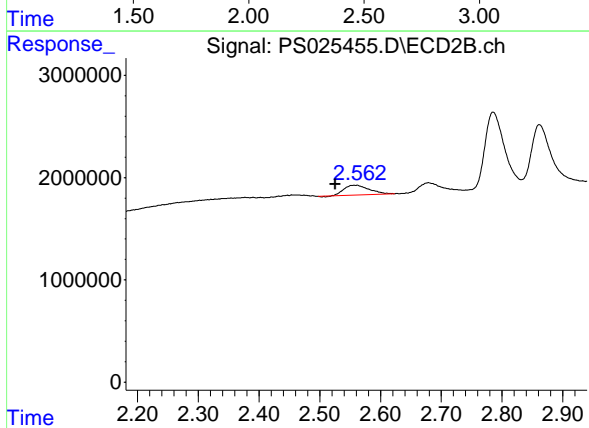




#1 Dalapon

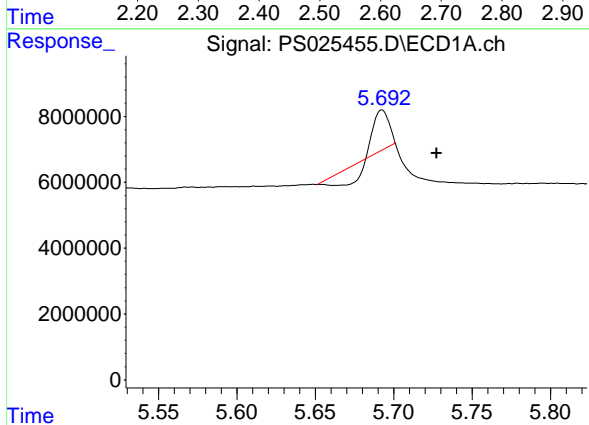
R.T.: 0.000 min  
 Exp R.T.: 2.467 min  
 Response: 0  
 Conc: N.D.

Instrument :  
 ECD\_S  
 ClientSampleId :  
 I.BLK



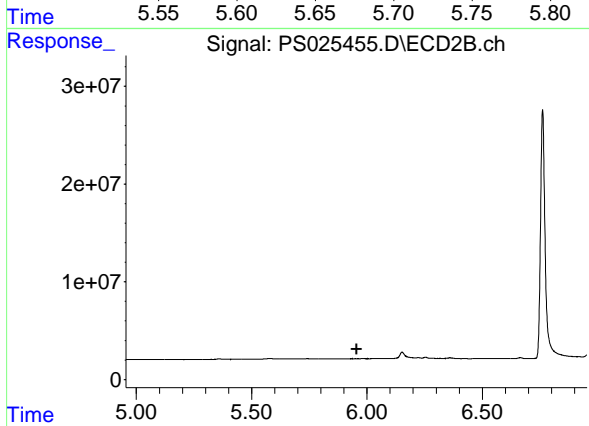
#1 Dalapon

R.T.: 2.561 min  
 Delta R.T.: 0.036 min  
 Response: 2784555  
 Conc: 2.42 ng/ml



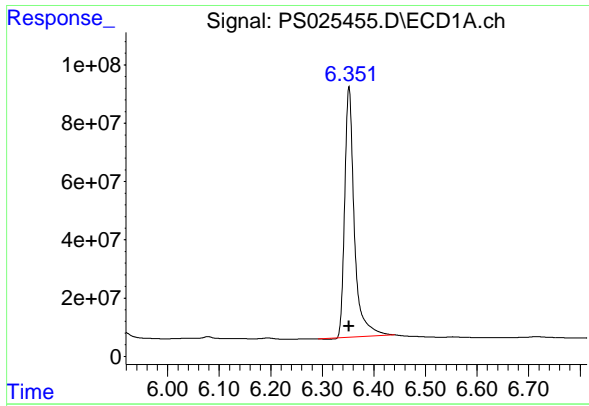
#2 3,5-DICHLOROBENZOIC ACID

R.T.: 5.693 min  
 Delta R.T.: -0.035 min  
 Response: 3593563  
 Conc: 1.06 ng/ml



#2 3,5-DICHLOROBENZOIC ACID

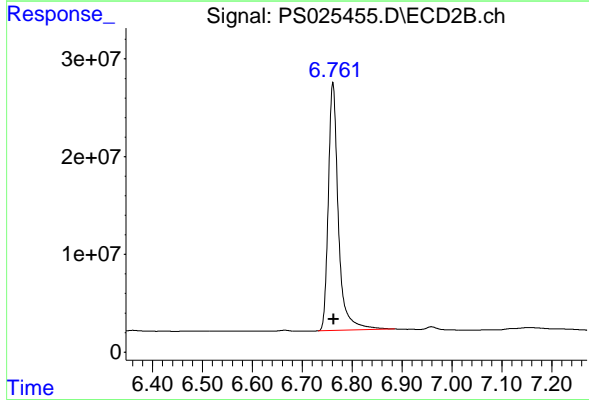
R.T.: 0.000 min  
 Exp R.T.: 5.954 min  
 Response: 0  
 Conc: N.D.



#4 2,4-DCAA

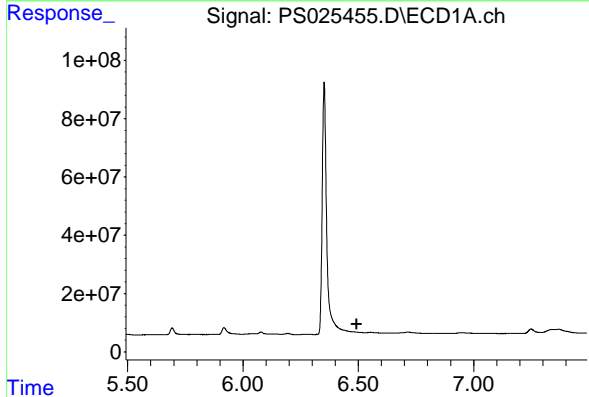
R.T.: 6.352 min  
 Delta R.T.: 0.000 min  
 Response: 1119543066  
 Conc: 499.62 ng/ml

Instrument :  
 ECD\_S  
 ClientSampleId :  
 I.BLK



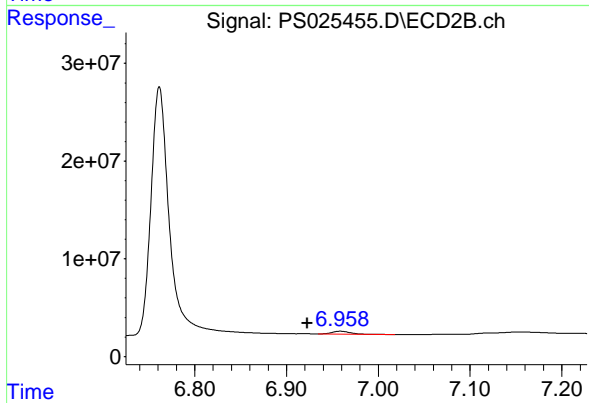
#4 2,4-DCAA

R.T.: 6.761 min  
 Delta R.T.: -0.002 min  
 Response: 355423905  
 Conc: 500.76 ng/ml



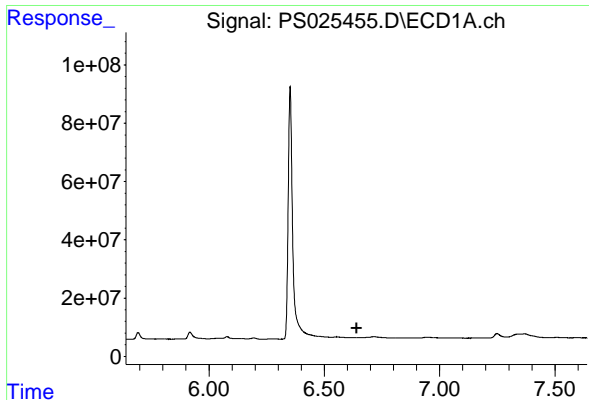
#5 DICAMBA

R.T.: 0.000 min  
 Exp R.T. : 6.492 min  
 Response: 0  
 Conc: N.D.



#5 DICAMBA

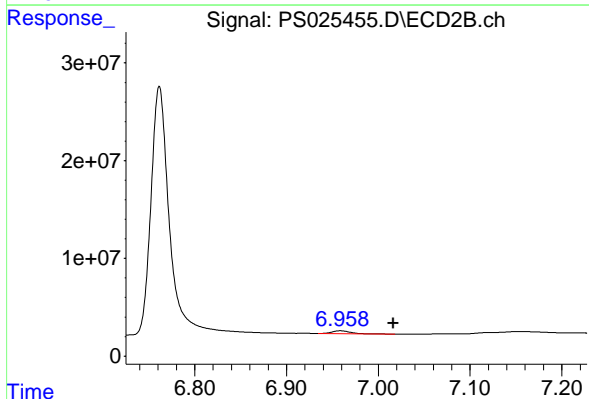
R.T.: 6.959 min  
 Delta R.T.: 0.036 min  
 Response: 4005521  
 Conc: 1.32 ng/ml



#6 MCPP

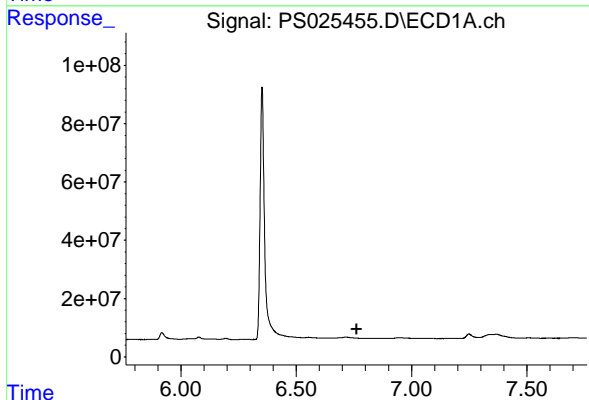
R.T.: 0.000 min  
 Exp R.T.: 6.640 min  
 Response: 0  
 Conc: N.D.

Instrument :  
 ECD\_S  
 ClientSampleId :  
 I.BLK



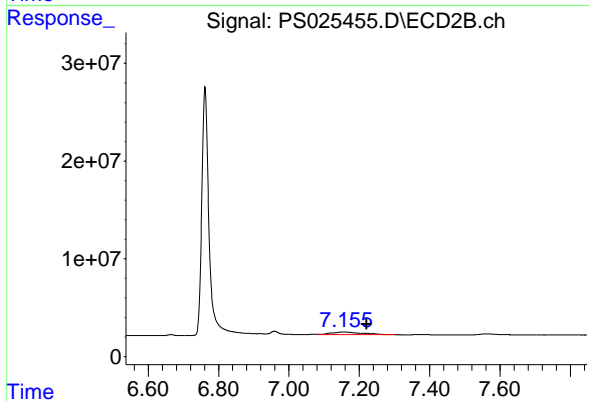
#6 MCPP

R.T.: 6.959 min  
 Delta R.T.: -0.058 min  
 Response: 4005521  
 Conc: 2.01 ug/ml



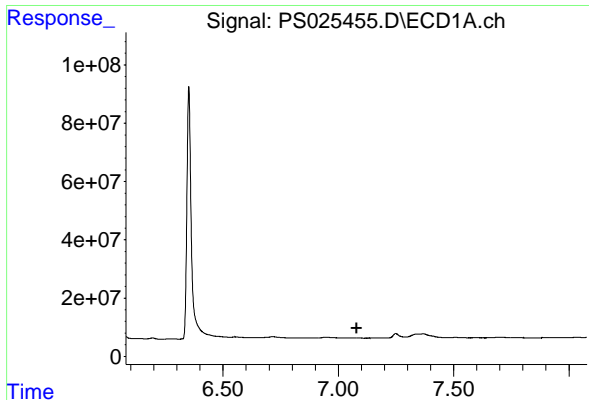
#7 MCPA

R.T.: 0.000 min  
 Exp R.T.: 6.762 min  
 Response: 0  
 Conc: N.D.



#7 MCPA

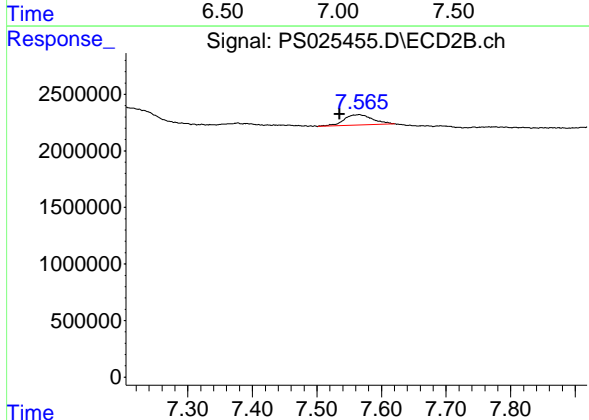
R.T.: 7.154 min  
 Delta R.T.: -0.067 min  
 Response: 15702769  
 Conc: 5.00 ug/ml



#8 DICHLORPROP

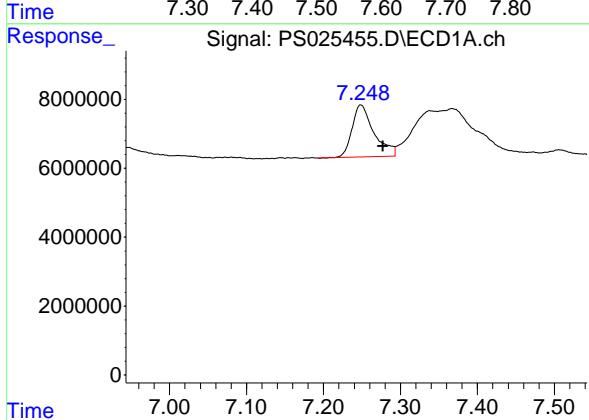
R.T.: 0.000 min  
 Exp R.T.: 7.079 min  
 Response: 0  
 Conc: N.D.

Instrument :  
 ECD\_S  
 ClientSampleId :  
 I.BLK



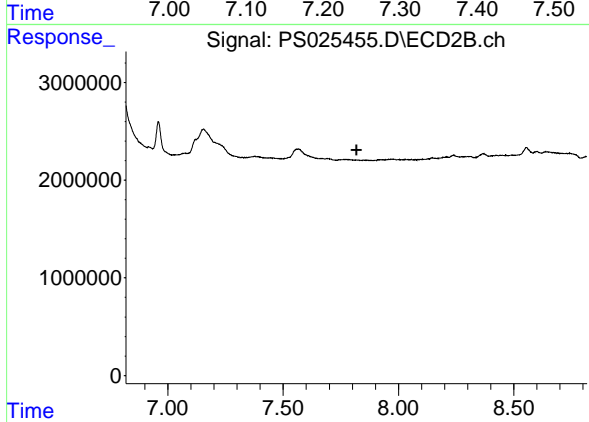
#8 DICHLORPROP

R.T.: 7.566 min  
 Delta R.T.: 0.031 min  
 Response: 2856716  
 Conc: 3.69 ng/ml



#9 2,4-D

R.T.: 7.249 min  
 Delta R.T.: -0.029 min  
 Response: 29766268  
 Conc: 9.61 ng/ml



#9 2,4-D

R.T.: 0.000 min  
 Exp R.T.: 7.818 min  
 Response: 0  
 Conc: N.D.