

Data Path : Z:\pestpcbsrv\HPCHEM1\ECD_S\Data\PS010524\
 Data File : PS025465.D
 Signal(s) : Signal #1: ECD1A.ch Signal #2: ECD2B.ch
 Acq On : 05 Jan 2024 20:16
 Operator : AR\AJ
 Sample : 06045-04
 Misc :
 ALS Vial : 13 Sample Multiplier: 1

Instrument :
 ECD_S
 ClientSampleId :
 MR-300-2.0-2.5

Integration File signal 1: autoint1.e
 Integration File signal 2: autoint2.e
 Quant Time: Jan 05 23:29:56 2024
 Quant Method : Z:\pestpcbsrv\HPCHEM1\ECD_S\Method\PS122823.M
 Quant Title : 8080.M
 QLast Update : Thu Dec 28 17:23:18 2023
 Response via : Initial Calibration
 Integrator: ChemStation

Volume Inj. : 2 µl
 Signal #1 Phase : Rtx-CLPesticides Signal #2 Phase: Rtx-CLPesticides2
 Signal #1 Info : 30M x 0.32mm x0.5 Signal #2 Info : 30M x 0.32mm x 0.25µm

Compound	RT#1	RT#2	Resp#1	Resp#2	ng/ml	ng/ml

System Monitoring Compounds						
4) S 2,4-DCAA	6.351	6.760	1641.0E6	419.5E6	732.325	591.003
Target Compounds						
1) T Dalapon	2.439	2.500	139.6E6	122.6E6	45.120	106.693 #
2) T 3,5-DICHL...	5.722	5.952	21573457	2867585	6.343	2.564 #
3) T 4-Nitroph...	6.224	6.424f	9074404	3617780	5.858	7.283
5) T DICAMBA	6.490	6.919	6247642	5416926	<MDL	1.790 #
6) T MCPP	6.673	7.030	57343770	3208788	8.523	1.608 #
7) T MCPA	6.761	7.209	4730974	7611450	<MDL	2.422 #
8) T DICHLORPROP	7.111	7.543	8988647	27496587	3.494	35.547 #
9) T 2,4-D	7.283	7.821	4585099	6552645	1.480	6.832 #
10) T Pentachlo...	7.502	8.235	87078753	21498981	2.470	1.939
11) T 2,4,5-TP ...	8.029	8.598	84658226	-13496015	5.571	N.D. #
12) T 2,4,5-T	8.290	8.966	105.3E6	7831871	7.023	1.835 #
13) T 2,4-DB	8.799	9.472	278.2E6	34674957	115.369	63.211 #
14) T DINOSEB	9.834	9.812	39637020	68906710	3.448	21.696 #
15) T Picloram	9.688	10.758	127.7E6	20298583	6.114	2.979 #
16) T DCPA	10.100	10.716	137.3E6	6079814	7.226	1.138 #

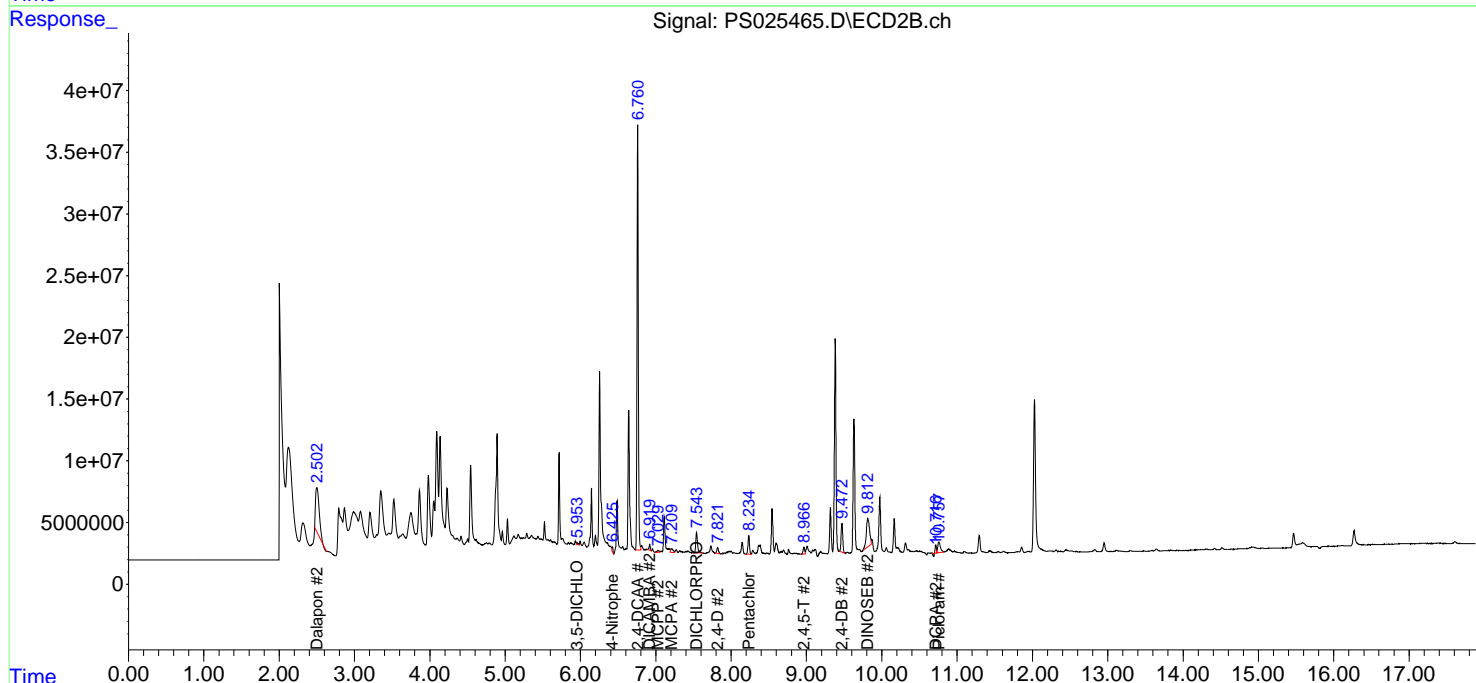
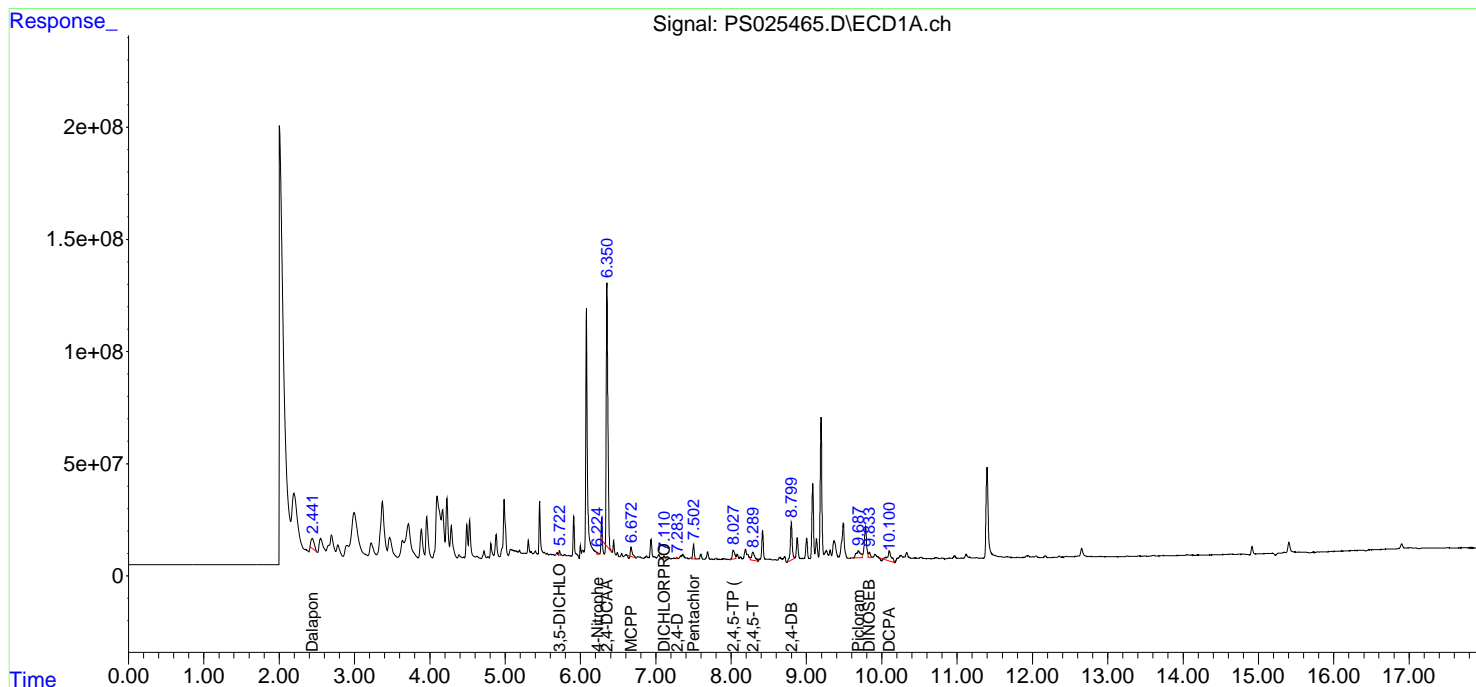
(f)=RT Delta > 1/2 Window (#)=Amounts differ by > 25% (m)=manual int.

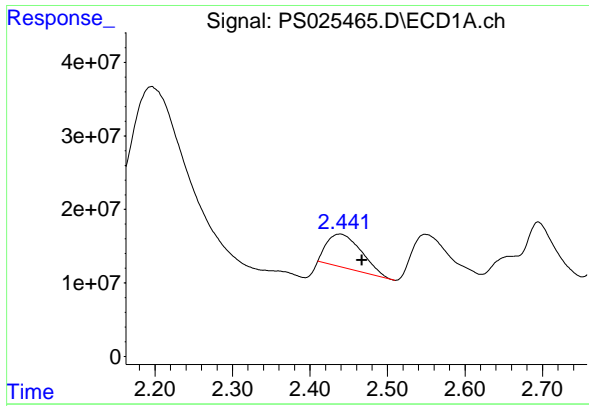
Data Path : Z:\pestpcbsrv\HPCHEM1\ECD_S\Data\PS010524\
 Data File : PS025465.D
 Signal(s) : Signal #1: ECD1A.ch Signal #2: ECD2B.ch
 Acq On : 05 Jan 2024 20:16
 Operator : AR\AJ
 Sample : 06045-04
 Misc :
 ALS Vial : 13 Sample Multiplier: 1

Instrument :
 ECD_S
 ClientSampleId :
 MR-300-2.0-2.5

Integration File signal 1: autoint1.e
 Integration File signal 2: autoint2.e
 Quant Time: Jan 05 23:29:56 2024
 Quant Method : Z:\pestpcbsrv\HPCHEM1\ECD_S\Method\PS122823.M
 Quant Title : 8080.M
 QLast Update : Thu Dec 28 17:23:18 2023
 Response via : Initial Calibration
 Integrator: ChemStation

Volume Inj. : 2 µl
 Signal #1 Phase : Rtx-CLPesticides Signal #2 Phase: Rtx-CLPesticides2
 Signal #1 Info : 30M x 0.32mm x 0.5 Signal #2 Info : 30M x 0.32mm x 0.25µm

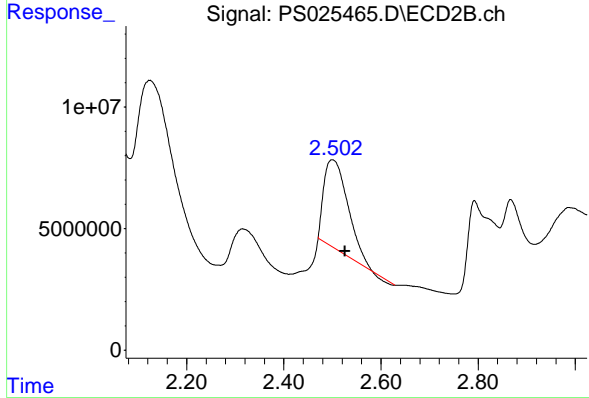




#1 Dalapon

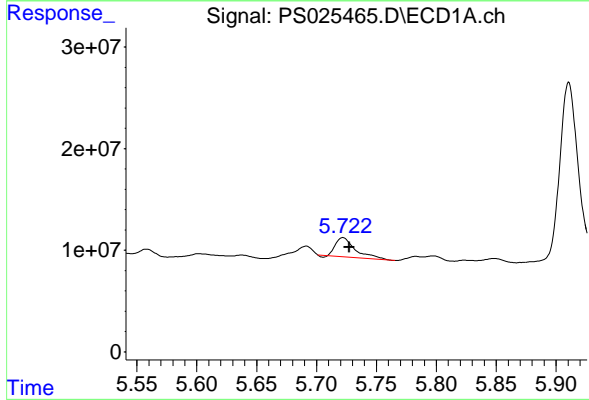
R.T.: 2.439 min
 Delta R.T.: -0.028 min
 Response: 139624472
 Conc: 45.12 ng/ml

Instrument :
 ECD_S
 ClientSampleId :
 MR-300-2.0-2.5



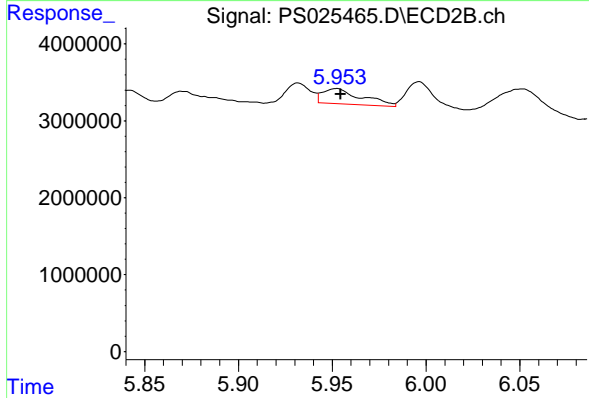
#1 Dalapon

R.T.: 2.500 min
 Delta R.T.: -0.026 min
 Response: 122623891
 Conc: 106.69 ng/ml



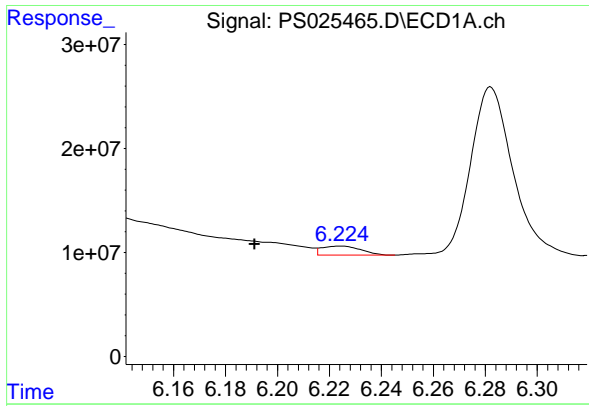
#2 3,5-DICHLOROBENZOIC ACID

R.T.: 5.722 min
 Delta R.T.: -0.005 min
 Response: 21573457
 Conc: 6.34 ng/ml



#2 3,5-DICHLOROBENZOIC ACID

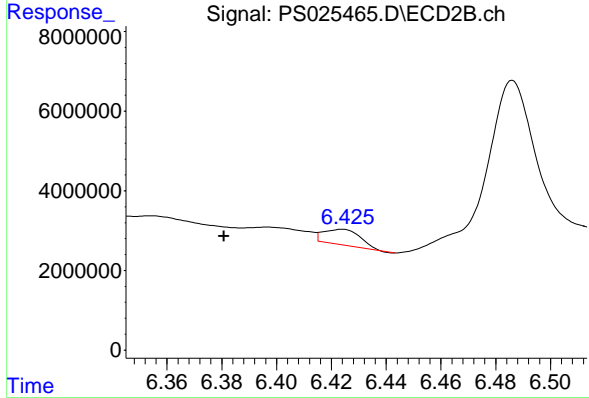
R.T.: 5.952 min
 Delta R.T.: -0.002 min
 Response: 2867585
 Conc: 2.56 ng/ml



#3 4-Nitrophenol

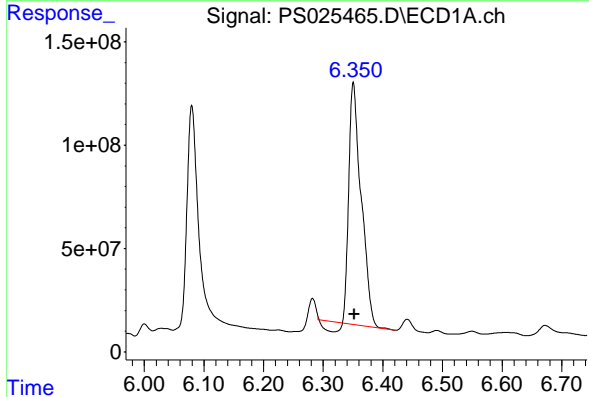
R.T.: 6.224 min
 Delta R.T.: 0.033 min
 Response: 9074404
 Conc: 5.86 ng/ml

Instrument :
 ECD_S
 ClientSampleId :
 MR-300-2.0-2.5



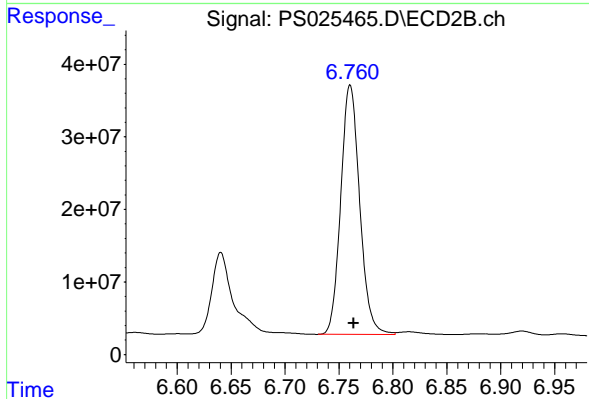
#3 4-Nitrophenol

R.T.: 6.424 min
 Delta R.T.: 0.043 min
 Response: 3617780
 Conc: 7.28 ng/ml



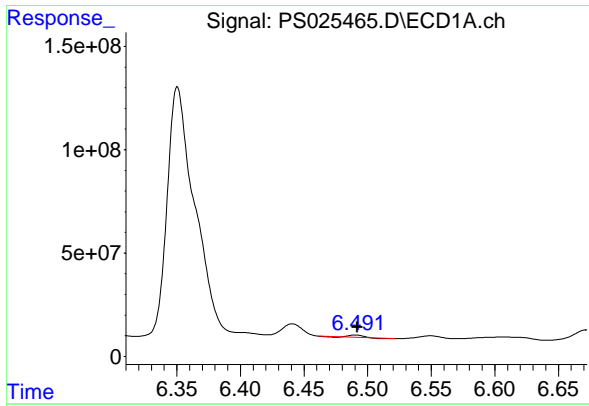
#4 2,4-DCAA

R.T.: 6.351 min
 Delta R.T.: -0.001 min
 Response: 1640996992
 Conc: 732.33 ng/ml



#4 2,4-DCAA

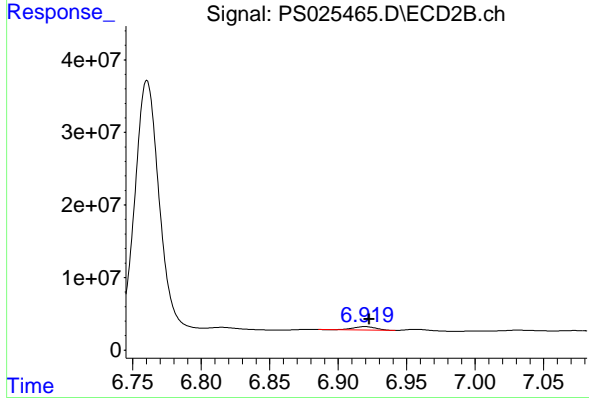
R.T.: 6.760 min
 Delta R.T.: -0.003 min
 Response: 419478498
 Conc: 591.00 ng/ml



#5 DICAMBA

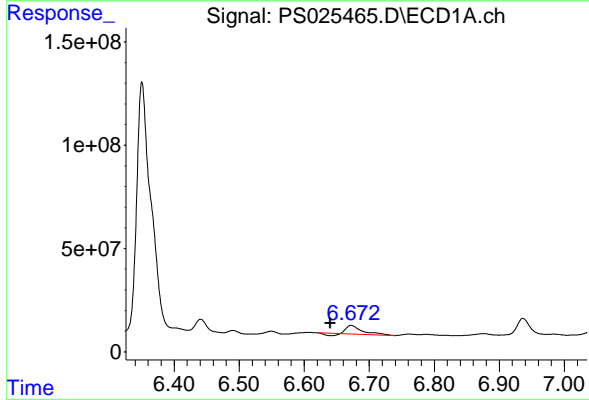
R.T.: 6.490 min
 Delta R.T.: -0.002 min
 Response: 6247642
 Conc: N.D.

Instrument :
 ECD_S
 ClientSampleId :
 MR-300-2.0-2.5



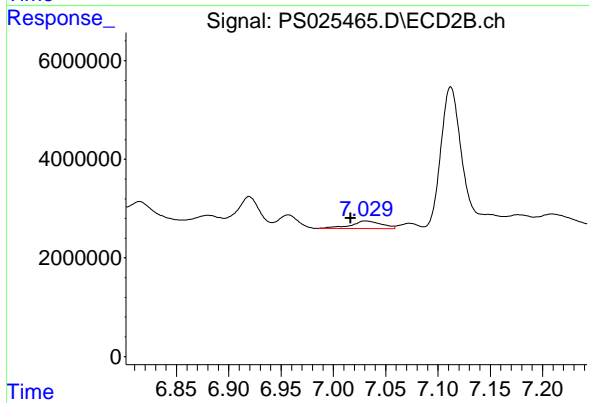
#5 DICAMBA

R.T.: 6.919 min
 Delta R.T.: -0.003 min
 Response: 5416926
 Conc: 1.79 ng/ml



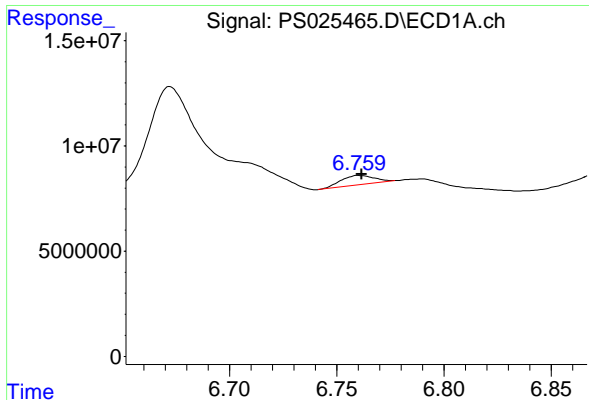
#6 MCPP

R.T.: 6.673 min
 Delta R.T.: 0.033 min
 Response: 57343770
 Conc: 8.52 ug/ml



#6 MCPP

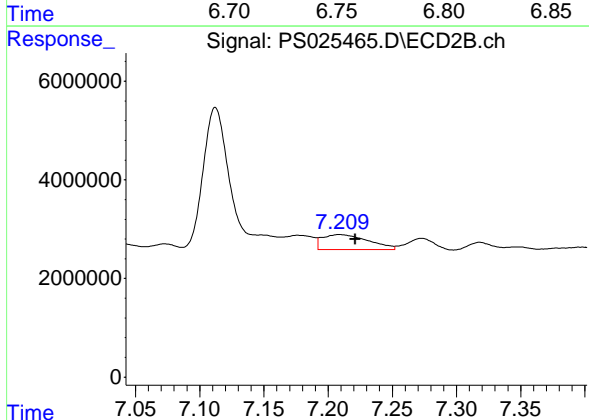
R.T.: 7.030 min
 Delta R.T.: 0.014 min
 Response: 3208788
 Conc: 1.61 ug/ml



#7 MCPA

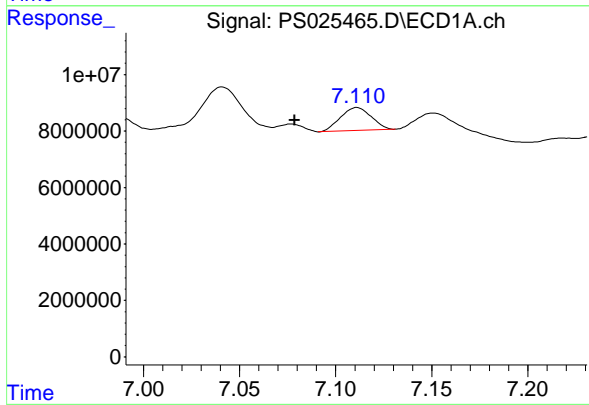
R.T.: 6.761 min
 Delta R.T.: 0.000 min
 Response: 4730974
 Conc: N.D.

Instrument : ECD_S
 ClientSampleId : MR-300-2.0-2.5



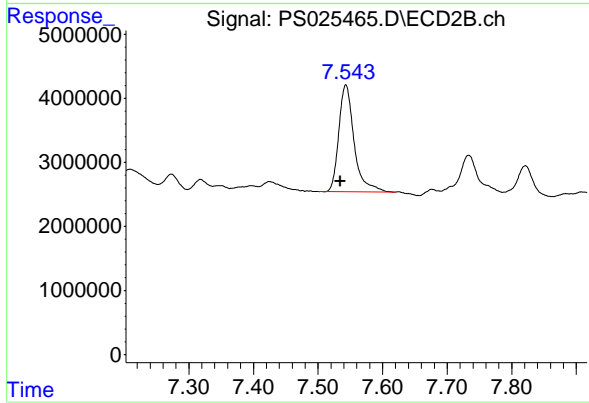
#7 MCPA

R.T.: 7.209 min
 Delta R.T.: -0.012 min
 Response: 7611450
 Conc: 2.42 ug/ml



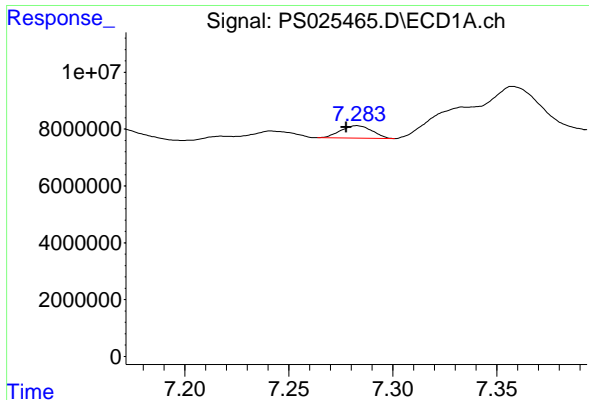
#8 DICHLORPROP

R.T.: 7.111 min
 Delta R.T.: 0.032 min
 Response: 8988647
 Conc: 3.49 ng/ml



#8 DICHLORPROP

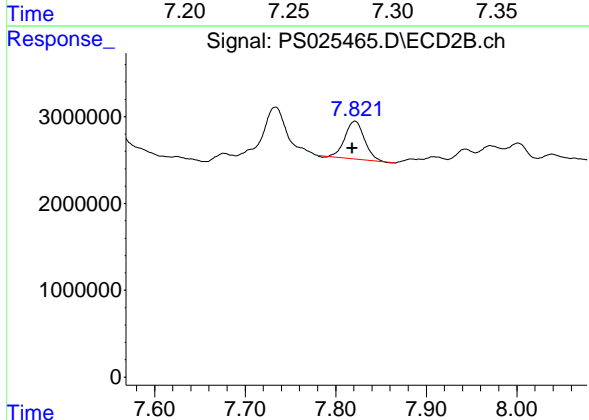
R.T.: 7.543 min
 Delta R.T.: 0.008 min
 Response: 27496587
 Conc: 35.55 ng/ml



#9 2,4-D

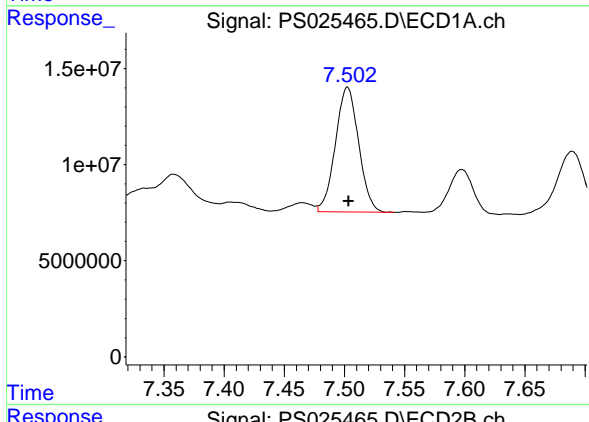
R.T.: 7.283 min
 Delta R.T.: 0.005 min
 Response: 4585099
 Conc: 1.48 ng/ml

Instrument : ECD_S
 ClientSampleId : MR-300-2.0-2.5



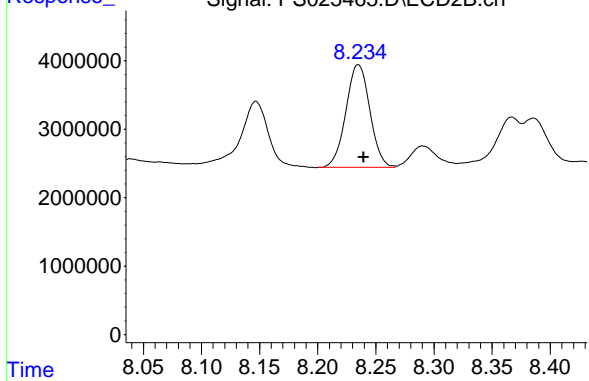
#9 2,4-D

R.T.: 7.821 min
 Delta R.T.: 0.003 min
 Response: 6552645
 Conc: 6.83 ng/ml



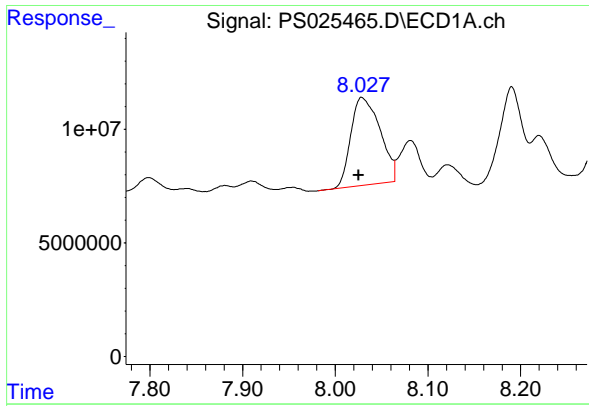
#10 Pentachlorophenol

R.T.: 7.502 min
 Delta R.T.: -0.001 min
 Response: 87078753
 Conc: 2.47 ng/ml



#10 Pentachlorophenol

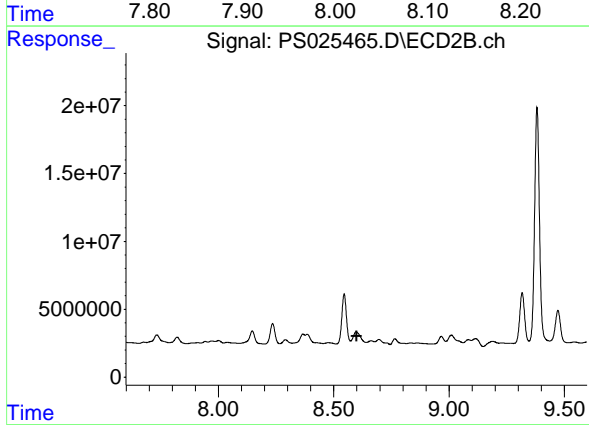
R.T.: 8.235 min
 Delta R.T.: -0.005 min
 Response: 21498981
 Conc: 1.94 ng/ml



#11 2,4,5-TP (SILVEX)

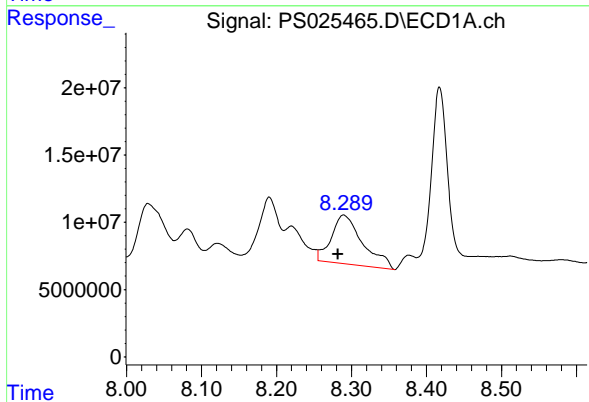
R.T.: 8.029 min
 Delta R.T.: 0.004 min
 Response: 84658226
 Conc: 5.57 ng/ml

Instrument :
 ECD_S
 ClientSampleId :
 MR-300-2.0-2.5



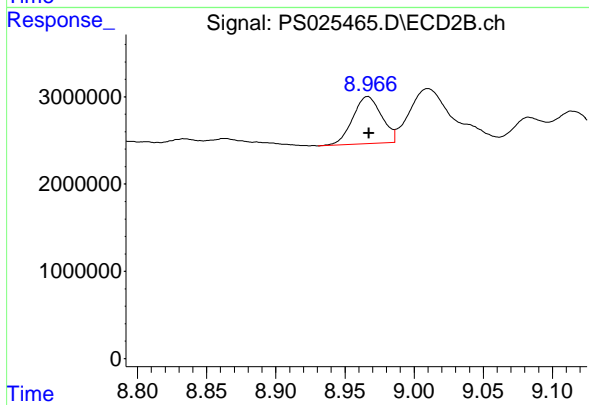
#11 2,4,5-TP (SILVEX)

R.T.: 8.598 min
 Delta R.T.: 0.000 min
 Response: -13496015
 Conc: N.D.



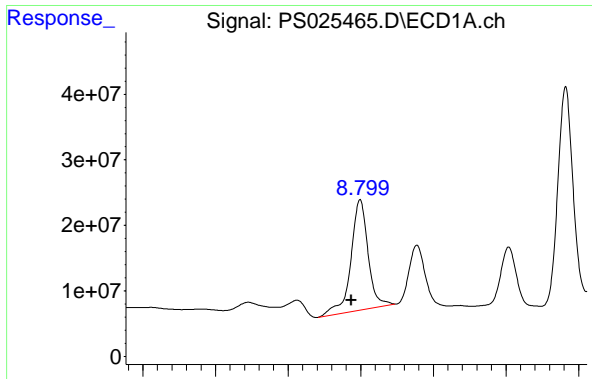
#12 2,4,5-T

R.T.: 8.290 min
 Delta R.T.: 0.008 min
 Response: 105329888
 Conc: 7.02 ng/ml



#12 2,4,5-T

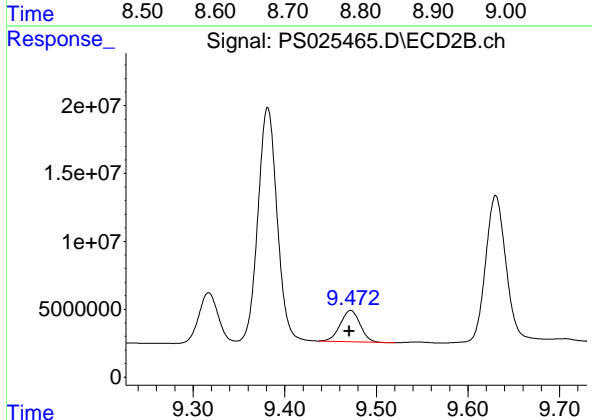
R.T.: 8.966 min
 Delta R.T.: 0.000 min
 Response: 7831871
 Conc: 1.84 ng/ml



#13 2,4-DB

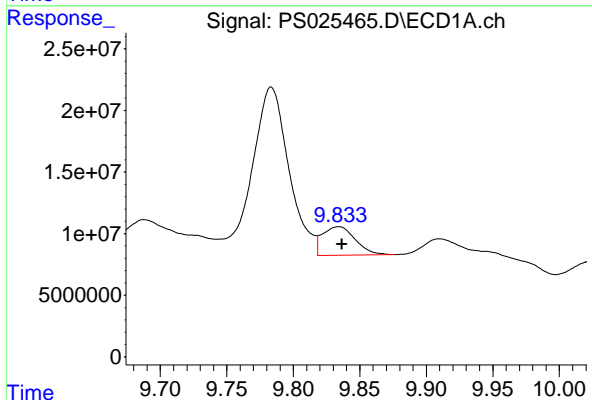
R.T.: 8.799 min
 Delta R.T.: 0.012 min
 Response: 278196075
 Conc: 115.37 ng/ml

Instrument : ECD_S
 ClientSampleId : MR-300-2.0-2.5



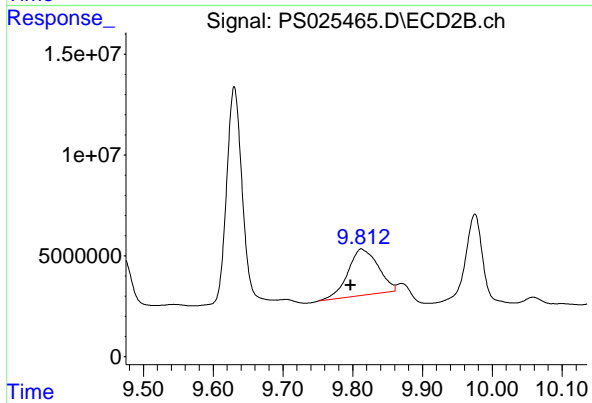
#13 2,4-DB

R.T.: 9.472 min
 Delta R.T.: 0.002 min
 Response: 34674957
 Conc: 63.21 ng/ml



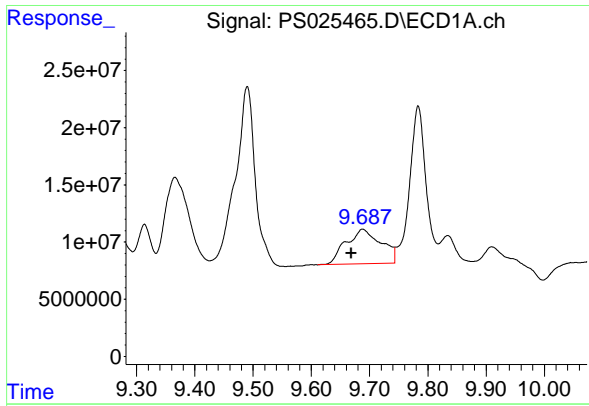
#14 DINOSEB

R.T.: 9.834 min
 Delta R.T.: -0.003 min
 Response: 39637020
 Conc: 3.45 ng/ml



#14 DINOSEB

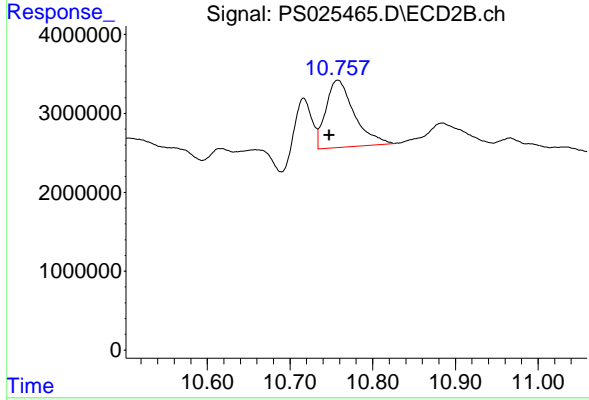
R.T.: 9.812 min
 Delta R.T.: 0.015 min
 Response: 68906710
 Conc: 21.70 ng/ml



#15 Picloram

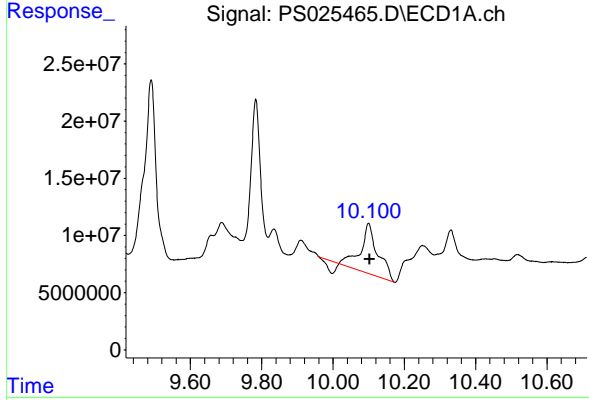
R.T.: 9.688 min
 Delta R.T.: 0.020 min
 Response: 127742152
 Conc: 6.11 ng/ml

Instrument : ECD_S
 ClientSampleId : MR-300-2.0-2.5



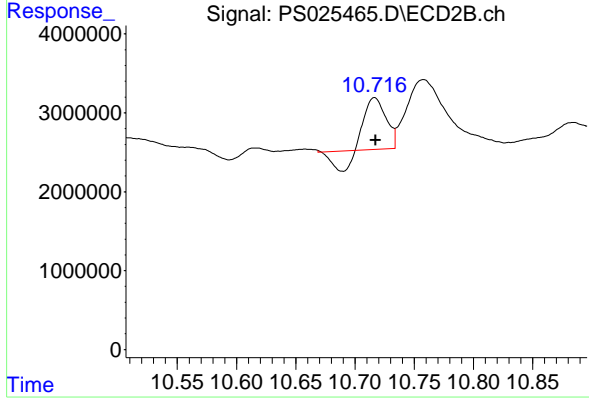
#15 Picloram

R.T.: 10.758 min
 Delta R.T.: 0.010 min
 Response: 20298583
 Conc: 2.98 ng/ml



#16 DCPA

R.T.: 10.100 min
 Delta R.T.: -0.003 min
 Response: 137316632
 Conc: 7.23 ng/ml



#16 DCPA

R.T.: 10.716 min
 Delta R.T.: 0.000 min
 Response: 6079814
 Conc: 1.14 ng/ml