

Data Path : Z:\pestpcbsrv\HPCHEM1\ECD\_S\Data\PS010923\  
 Data File : PS021678.D  
 Signal(s) : Signal #1: ECD1A.ch Signal #2: ECD2B.ch  
 Acq On : 09 Jan 2023 20:58  
 Operator : AR\AJ  
 Sample : 01029-01  
 Misc :  
 ALS Vial : 19 Sample Multiplier: 1

Instrument :  
 ECD\_S  
 ClientSampleId :

Integration File signal 1: autoint1.e  
 Integration File signal 2: autoint2.e  
 Quant Time: Jan 10 05:52:58 2023  
 Quant Method : Z:\pestpcbsrv\HPCHEM1\ECD\_S\Method\PS010923.M  
 Quant Title : 8080.M  
 QLast Update : Mon Jan 09 16:45:07 2023  
 Response via : Initial Calibration  
 Integrator: ChemStation

Volume Inj. : 2 µl  
 Signal #1 Phase : Rtx-CLPesticides Signal #2 Phase: Rtx-CLPesticides2  
 Signal #1 Info : 30M x 0.32mm x0.5 Signal #2 Info : 30M x 0.32mm x 0.25µm

Compound	RT#1	RT#2	Resp#1	Resp#2	ng/ml	ng/ml
-----						
System Monitoring Compounds						
4) S 2,4-DCAA	6.375	6.810	1137.0E6	688.9E6	408.476	383.429
Target Compounds						
2) T 3,5-DICHL...	5.745	6.021	14926443	17176505	3.859	6.233 #
3) T 4-Nitroph...	6.232	6.450	14798892	31237664	10.153	28.496 #
5) T DICAMBA	6.538	7.013	14264444	16454517	1.167	1.935 #
6) T MCPP	6.664	7.054	21000003	42581799	2.192	6.421 #
7) T MCPA	6.830	7.275	113.9E6	75216418	8.817	8.293
8) T DICHLORPROP	7.162f	7.615	146.7E6	75797795	45.488	35.527
9) T 2,4-D	7.282	7.889	70577439	124.2E6	18.172	49.153 #
10) T Pentachlo...	7.538	8.346	80108059	59702326	1.923	2.080
11) T 2,4,5-TP ...	8.032f	8.684	88089630	18449194	4.781	1.552 #
12) T 2,4,5-T	8.342	9.042	11847712	60410083	<MDL	5.408 #
13) T 2,4-DB	8.864	9.580	469.7E6	191.8E6	148.374	128.011
14) T DINOSEB	9.919	9.881	101.7E6	27472831	6.197	3.306 #
15) T Picloram	9.751	10.872	186.7E6	89380961	6.581	5.047
16) T DCPA	10.115f	10.823	438458	42293993	<MDL	3.034 #
-----						

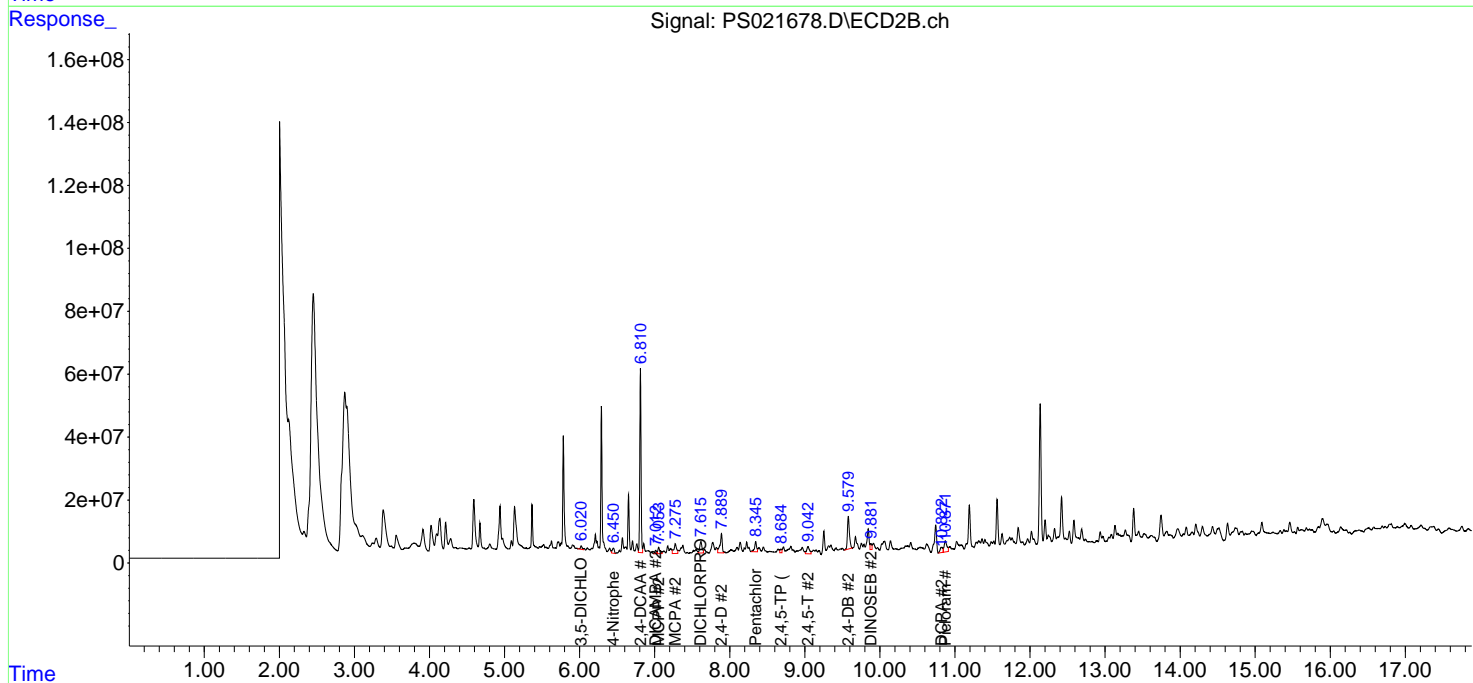
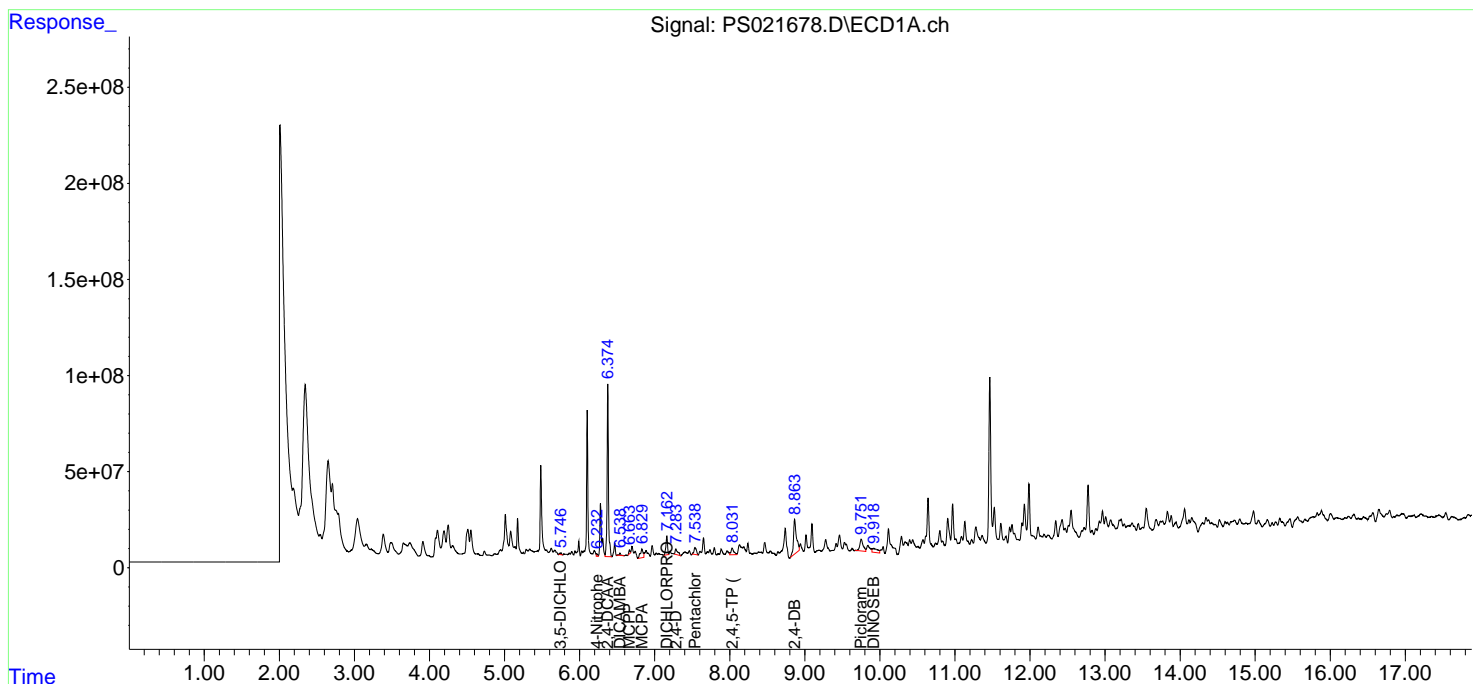
(f)=RT Delta > 1/2 Window (#)=Amounts differ by > 25% (m)=manual int.

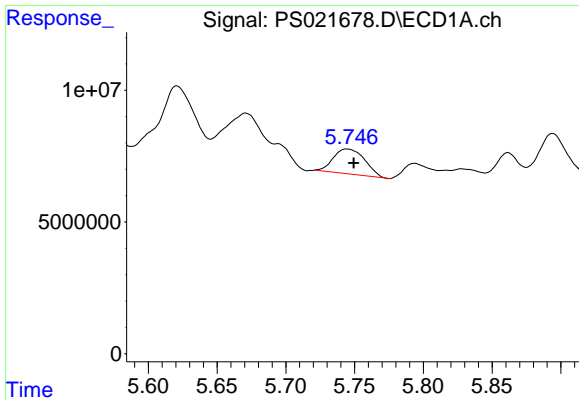
Data Path : Z:\pestpcbsrv\HPCHEM1\ECD\_S\Data\PS010923\  
 Data File : PS021678.D  
 Signal(s) : Signal #1: ECD1A.ch Signal #2: ECD2B.ch  
 Acq On : 09 Jan 2023 20:58  
 Operator : AR\AJ  
 Sample : 01029-01  
 Misc :  
 ALS Vial : 19 Sample Multiplier: 1

Instrument :  
 ECD\_S  
 ClientSampleId :

Integration File signal 1: autoint1.e  
 Integration File signal 2: autoint2.e  
 Quant Time: Jan 10 05:52:58 2023  
 Quant Method : Z:\pestpcbsrv\HPCHEM1\ECD\_S\Method\PS010923.M  
 Quant Title : 8080.M  
 QLast Update : Mon Jan 09 16:45:07 2023  
 Response via : Initial Calibration  
 Integrator: ChemStation

Volume Inj. : 2 µl  
 Signal #1 Phase : Rtx-CLPesticides Signal #2 Phase: Rtx-CLPesticides2  
 Signal #1 Info : 30M x 0.32mm x0.5 Signal #2 Info : 30M x 0.32mm x 0.25µm

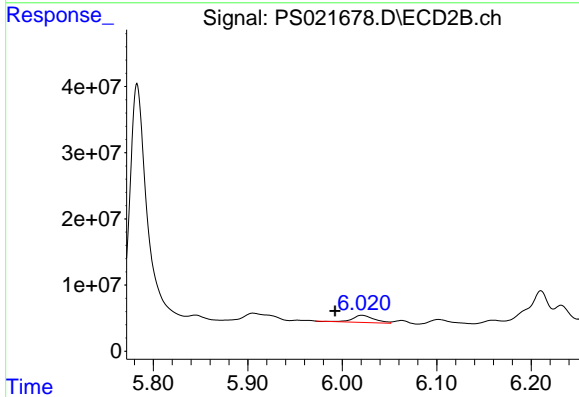




#2 3,5-DICHLORO BENZOIC ACID

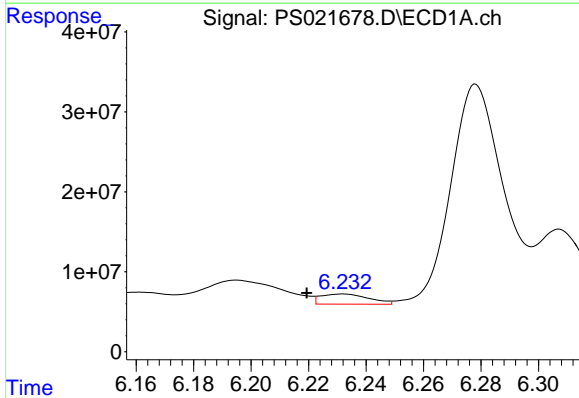
R.T.: 5.745 min  
 Delta R.T.: -0.005 min  
 Response: 14926443  
 Conc: 3.86 ng/ml

Instrument :  
 ECD\_S  
 ClientSampleId :



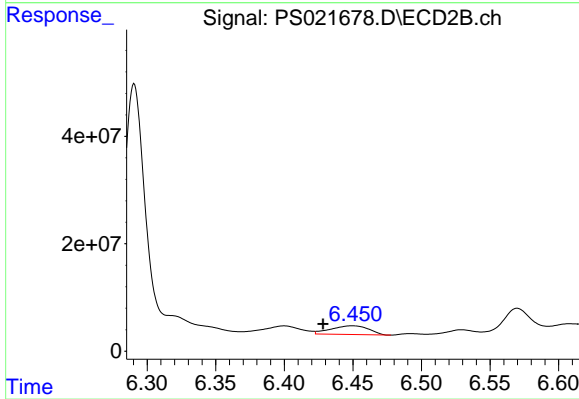
#2 3,5-DICHLORO BENZOIC ACID

R.T.: 6.021 min  
 Delta R.T.: 0.029 min  
 Response: 17176505  
 Conc: 6.23 ng/ml



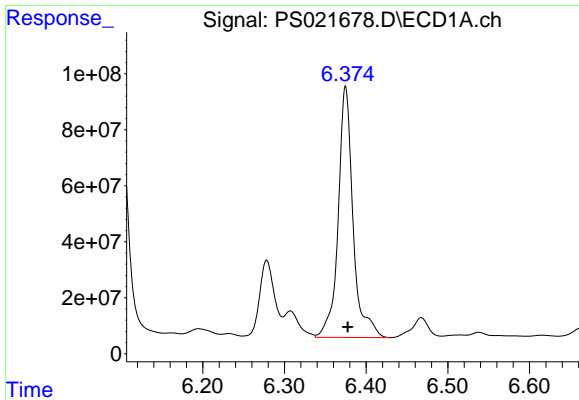
#3 4-Nitrophenol

R.T.: 6.232 min  
 Delta R.T.: 0.012 min  
 Response: 14798892  
 Conc: 10.15 ng/ml



#3 4-Nitrophenol

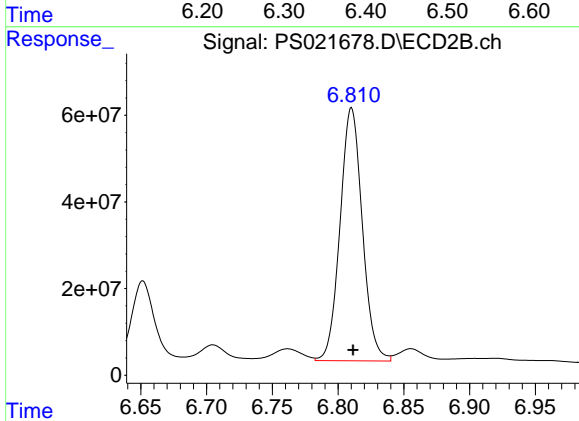
R.T.: 6.450 min  
 Delta R.T.: 0.021 min  
 Response: 31237664  
 Conc: 28.50 ng/ml



#4 2,4-DCAA

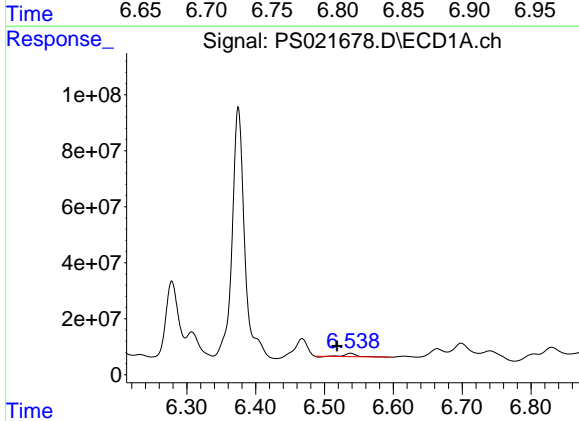
R.T.: 6.375 min  
 Delta R.T.: -0.003 min  
 Response: 1137021056  
 Conc: 408.48 ng/ml

Instrument :  
 ECD\_S  
 ClientSampleId :



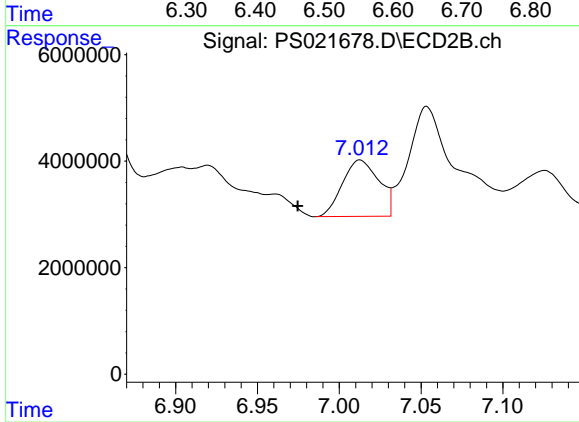
#4 2,4-DCAA

R.T.: 6.810 min  
 Delta R.T.: -0.001 min  
 Response: 688903291  
 Conc: 383.43 ng/ml



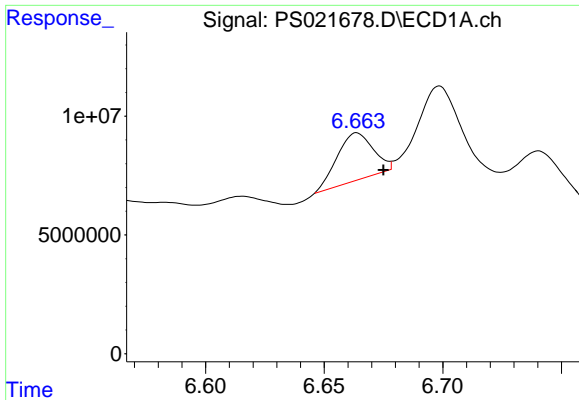
#5 DICAMBA

R.T.: 6.538 min  
 Delta R.T.: 0.019 min  
 Response: 14264444  
 Conc: 1.17 ng/ml



#5 DICAMBA

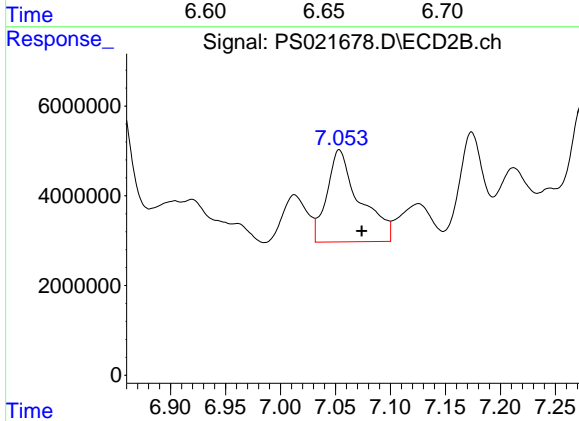
R.T.: 7.013 min  
 Delta R.T.: 0.038 min  
 Response: 16454517  
 Conc: 1.94 ng/ml



#6 MCPP

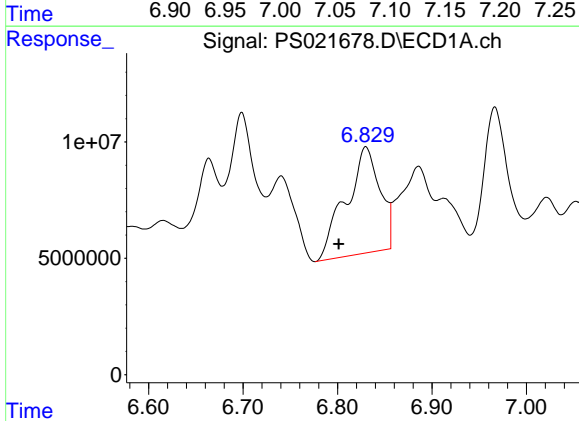
R.T.: 6.664 min  
 Delta R.T.: -0.011 min  
 Response: 2100003  
 Conc: 2.19 ug/ml

Instrument :  
 ECD\_S  
 ClientSampleId :



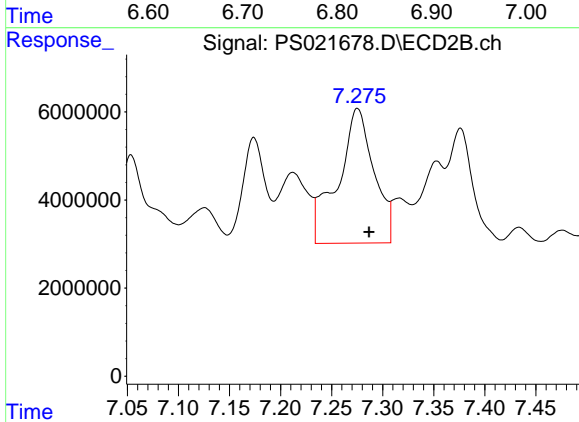
#6 MCPP

R.T.: 7.054 min  
 Delta R.T.: -0.020 min  
 Response: 42581799  
 Conc: 6.42 ug/ml



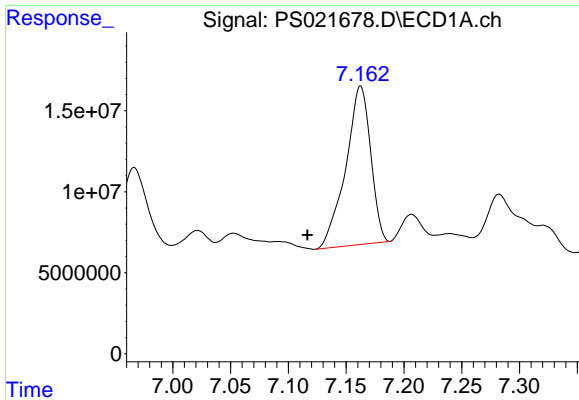
#7 MCPA

R.T.: 6.830 min  
 Delta R.T.: 0.029 min  
 Response: 113887492  
 Conc: 8.82 ug/ml



#7 MCPA

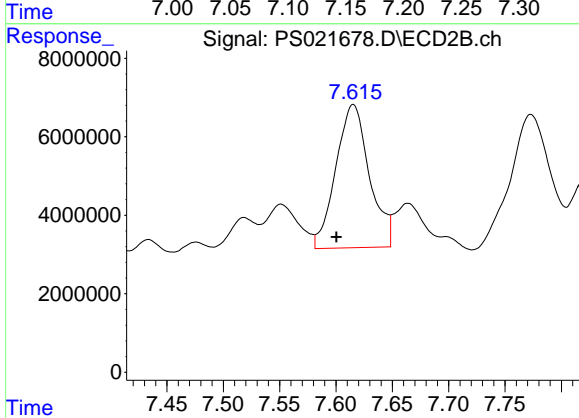
R.T.: 7.275 min  
 Delta R.T.: -0.011 min  
 Response: 75216418  
 Conc: 8.29 ug/ml



#8 DICHLORPROP

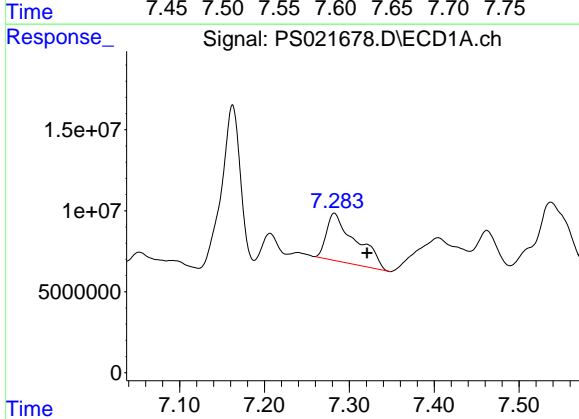
R.T.: 7.162 min  
 Delta R.T.: 0.046 min  
 Response: 146709902  
 Conc: 45.49 ng/ml

Instrument :  
 ECD\_S  
 ClientSampleId :



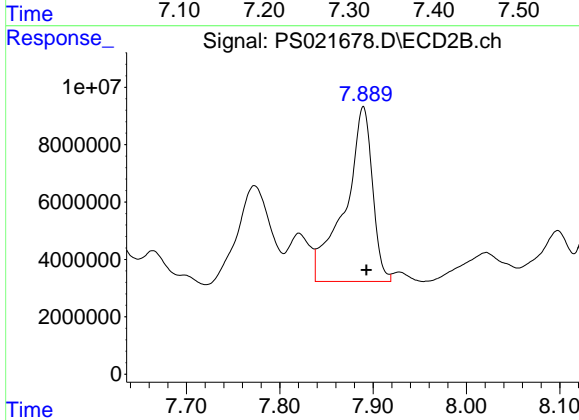
#8 DICHLORPROP

R.T.: 7.615 min  
 Delta R.T.: 0.015 min  
 Response: 75797795  
 Conc: 35.53 ng/ml



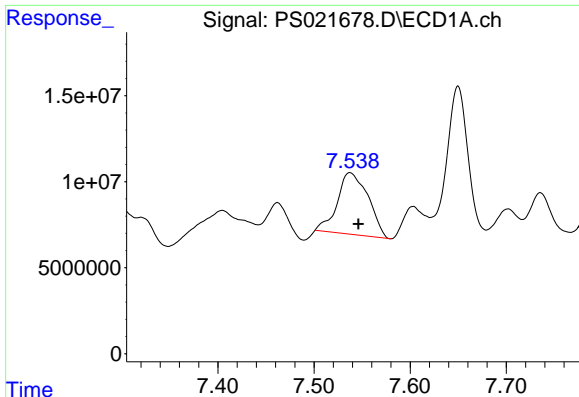
#9 2,4-D

R.T.: 7.282 min  
 Delta R.T.: -0.038 min  
 Response: 70577439  
 Conc: 18.17 ng/ml



#9 2,4-D

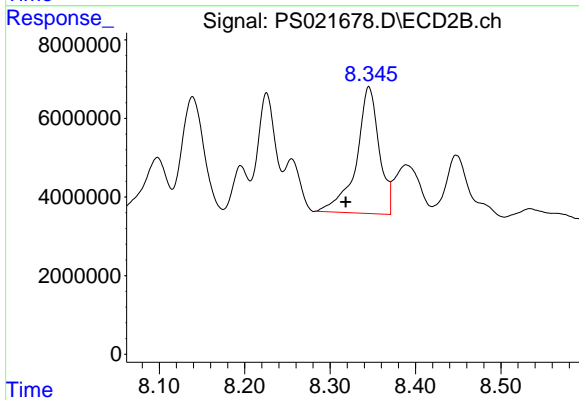
R.T.: 7.889 min  
 Delta R.T.: -0.004 min  
 Response: 124184926  
 Conc: 49.15 ng/ml



#10 Pentachlorophenol

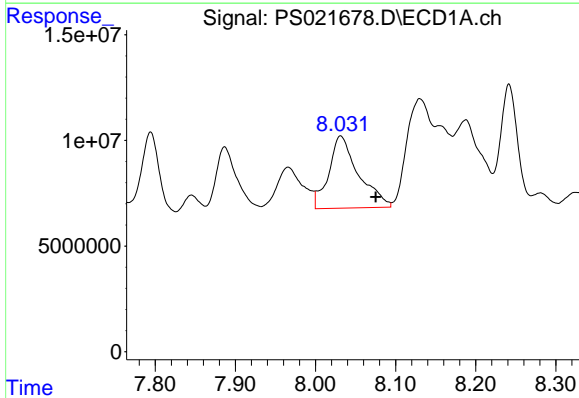
R.T.: 7.538 min  
 Delta R.T.: -0.008 min  
 Response: 80108059  
 Conc: 1.92 ng/ml

Instrument :  
 ECD\_S  
 ClientSampleId :



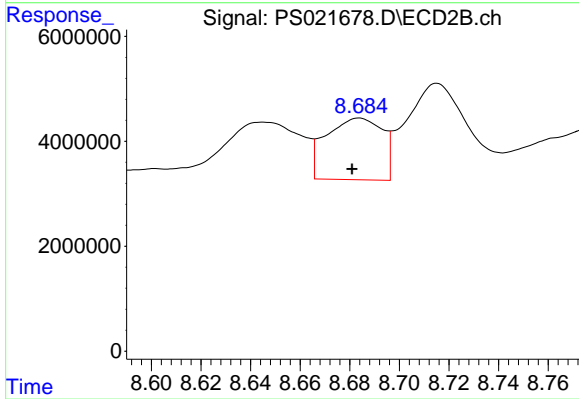
#10 Pentachlorophenol

R.T.: 8.346 min  
 Delta R.T.: 0.027 min  
 Response: 59702326  
 Conc: 2.08 ng/ml



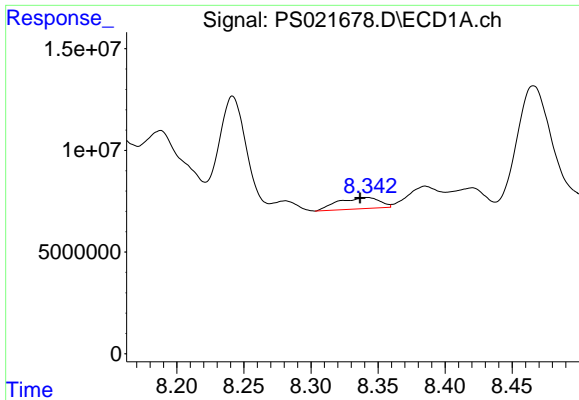
#11 2,4,5-TP (SILVEX)

R.T.: 8.032 min  
 Delta R.T.: -0.044 min  
 Response: 88089630  
 Conc: 4.78 ng/ml



#11 2,4,5-TP (SILVEX)

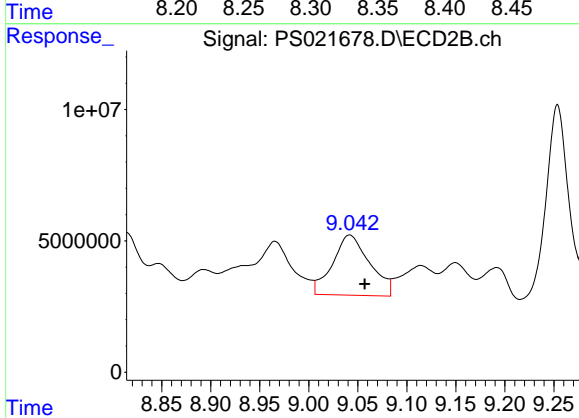
R.T.: 8.684 min  
 Delta R.T.: 0.003 min  
 Response: 18449194  
 Conc: 1.55 ng/ml



#12 2,4,5-T

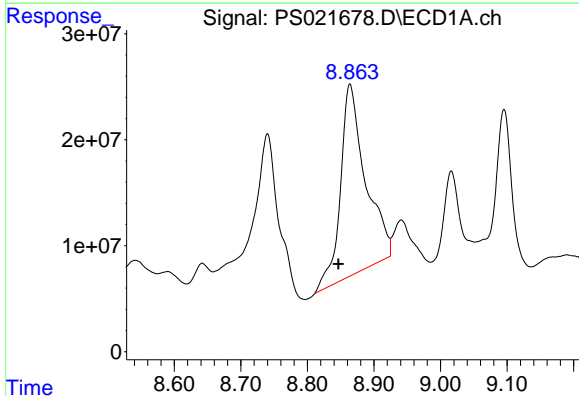
R.T.: 8.342 min  
 Delta R.T.: 0.005 min  
 Response: 11847712  
 Conc: N.D.

Instrument :  
 ECD\_S  
 ClientSampleId :



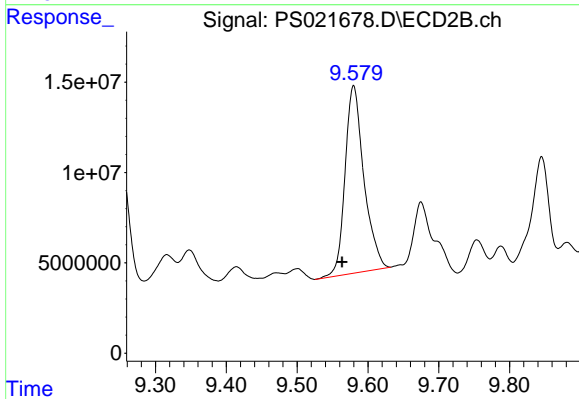
#12 2,4,5-T

R.T.: 9.042 min  
 Delta R.T.: -0.016 min  
 Response: 60410083  
 Conc: 5.41 ng/ml



#13 2,4-DB

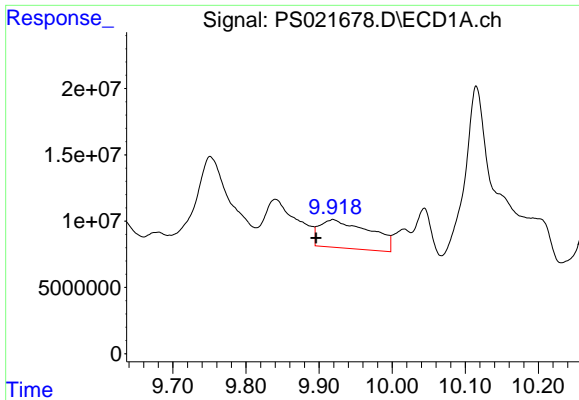
R.T.: 8.864 min  
 Delta R.T.: 0.018 min  
 Response: 469667654  
 Conc: 148.37 ng/ml



#13 2,4-DB

R.T.: 9.580 min  
 Delta R.T.: 0.016 min  
 Response: 191793698  
 Conc: 128.01 ng/ml

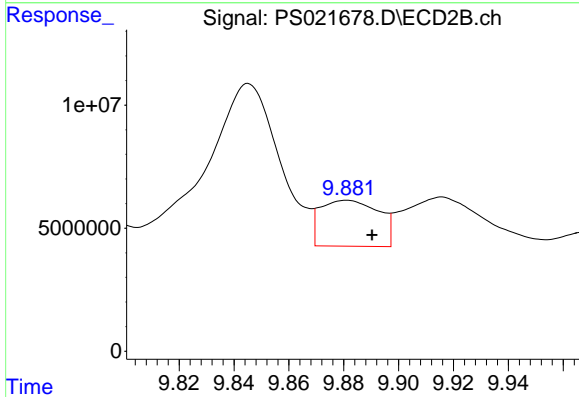




#14 DINOSEB

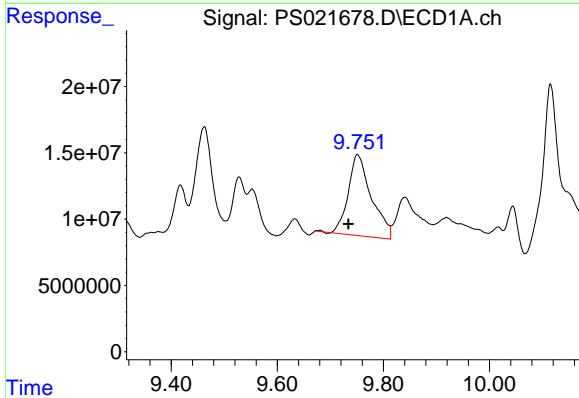
R.T.: 9.919 min  
 Delta R.T.: 0.023 min  
 Response: 101723292  
 Conc: 6.20 ng/ml

Instrument :  
 ECD\_S  
 ClientSampleId :



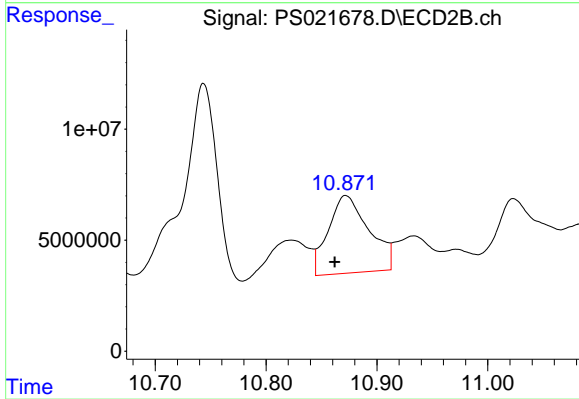
#14 DINOSEB

R.T.: 9.881 min  
 Delta R.T.: -0.009 min  
 Response: 27472831  
 Conc: 3.31 ng/ml



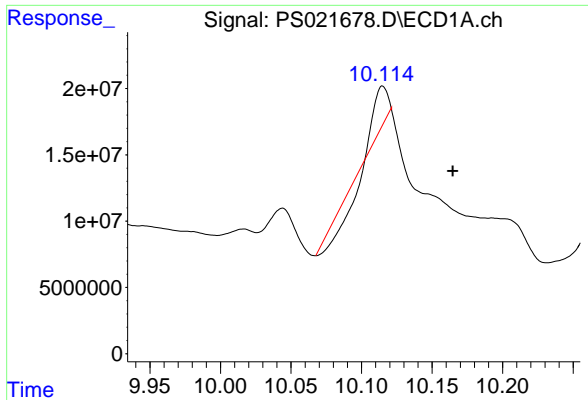
#15 Picloram

R.T.: 9.751 min  
 Delta R.T.: 0.017 min  
 Response: 186684831  
 Conc: 6.58 ng/ml



#15 Picloram

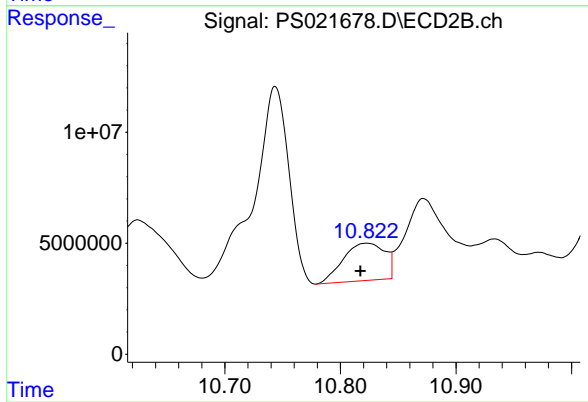
R.T.: 10.872 min  
 Delta R.T.: 0.010 min  
 Response: 89380961  
 Conc: 5.05 ng/ml



#16 DCPA

R.T.: 10.115 min  
 Delta R.T.: -0.049 min  
 Response: 438458  
 Conc: N.D.

Instrument :  
 ECD\_S  
 ClientSampleId :



#16 DCPA

R.T.: 10.823 min  
 Delta R.T.: 0.005 min  
 Response: 42293993  
 Conc: 3.03 ng/ml