

Data Path : Z:\pestpcbsrv\HPCHEM1\ECD_S\Data\PS010923\
 Data File : PS021682.D
 Signal(s) : Signal #1: ECD1A.ch Signal #2: ECD2B.ch
 Acq On : 10 Jan 2023 02:48
 Operator : AR\AJ
 Sample : 01029-04MS
 Misc :
 ALS Vial : 21 Sample Multiplier: 1

Instrument :
 ECD_S
 ClientSampleId :

Integration File signal 1: autoint1.e
 Integration File signal 2: autoint2.e
 Quant Time: Jan 10 05:54:14 2023
 Quant Method : Z:\pestpcbsrv\HPCHEM1\ECD_S\Method\PS010923.M
 Quant Title : 8080.M
 QLast Update : Mon Jan 09 16:45:07 2023
 Response via : Initial Calibration
 Integrator: ChemStation

Volume Inj. : 2 µl
 Signal #1 Phase : Rtx-CLPesticides Signal #2 Phase: Rtx-CLPesticides2
 Signal #1 Info : 30M x 0.32mm x0.5 Signal #2 Info : 30M x 0.32mm x 0.25µm

	Compound	RT#1	RT#2	Resp#1	Resp#2	ng/ml	ng/ml

System Monitoring Compounds							
4) S	2,4-DCAA	6.375	6.810	1082.2E6	708.8E6	388.789	394.524
Target Compounds							
2) T	3,5-DICHL...	5.749	5.992	1203.4E6	820.3E6	311.096	297.655
3) T	4-Nitroph...	6.218	6.429	370.4E6	218.7E6	254.128	199.471
5) T	DICAMBA	6.518	6.973	3692.4E6	2340.0E6	301.981	275.207
6) T	MCPD	6.670	7.068	318.8E6	212.4E6	33.267	32.023
7) T	MCPA	6.795	7.280	387.8E6	300.1E6	30.025	33.093
8) T	DICHLORPROP	7.115	7.599	830.4E6	632.7E6	257.478	296.548
9) T	2,4-D	7.318	7.891	1192.5E6	891.7E6	307.047	352.939
10) T	Pentachlo...	7.545	8.318	8143.5E6	5119.5E6	195.501	178.389
11) T	2,4,5-TP ...	8.074	8.679	4981.7E6	3134.2E6	270.361	263.592
12) T	2,4,5-T	8.334	9.056	5530.7E6	3316.0E6	286.925	296.871
13) T	2,4-DB	8.845	9.564	940.1E6	452.3E6	296.982	301.868
14) T	DINOSEB	9.896	9.890	386.5E6	171.9E6	23.547	20.685
15) T	Picloram	9.733	10.862	8422.4E6	4989.3E6	296.904	281.747
16) T	DCPA	10.163	10.817	9372.5E6	5060.8E6	379.396	363.049

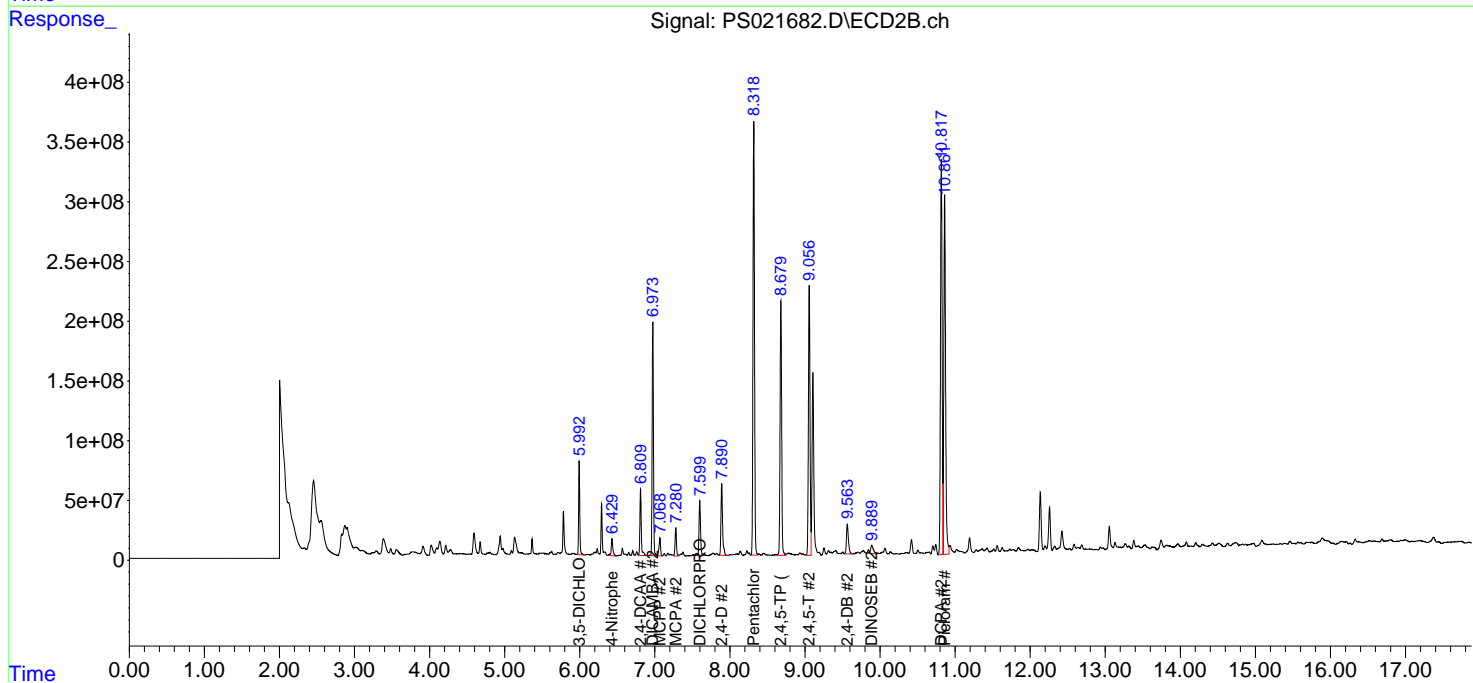
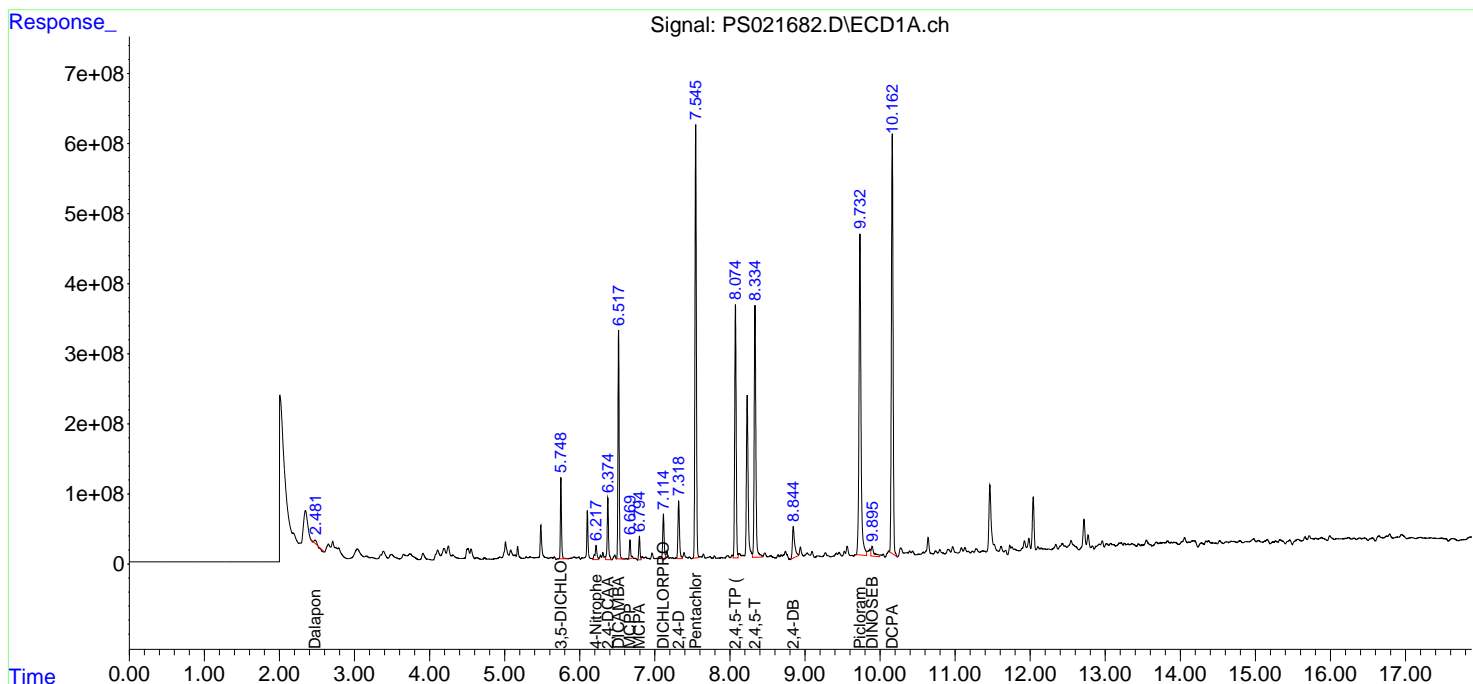
(f)=RT Delta > 1/2 Window (#)=Amounts differ by > 25% (m)=manual int.

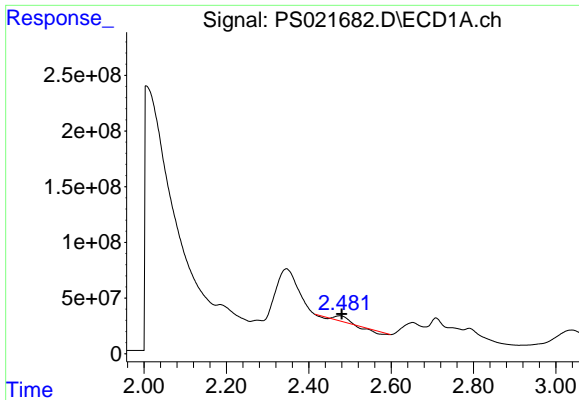
Data Path : Z:\pestpcbsrv\HPCHEM1\ECD_S\Data\PS010923\
 Data File : PS021682.D
 Signal(s) : Signal #1: ECD1A.ch Signal #2: ECD2B.ch
 Acq On : 10 Jan 2023 02:48
 Operator : AR\AJ
 Sample : 01029-04MS
 Misc :
 ALS Vial : 21 Sample Multiplier: 1

Instrument :
 ECD_S
 ClientSampleId :

Integration File signal 1: autoint1.e
 Integration File signal 2: autoint2.e
 Quant Time: Jan 10 05:54:14 2023
 Quant Method : Z:\pestpcbsrv\HPCHEM1\ECD_S\Method\PS010923.M
 Quant Title : 8080.M
 QLast Update : Mon Jan 09 16:45:07 2023
 Response via : Initial Calibration
 Integrator: ChemStation

Volume Inj. : 2 µl
 Signal #1 Phase : Rtx-CLPesticides Signal #2 Phase: Rtx-CLPesticides2
 Signal #1 Info : 30M x 0.32mm x0.5 Signal #2 Info : 30M x 0.32mm x 0.25µm

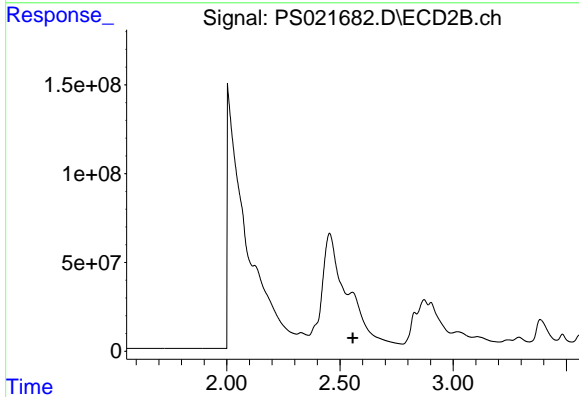




#1 Dalapon

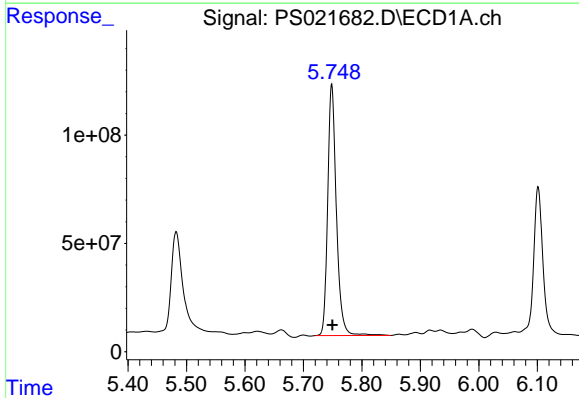
R.T.: 2.475 min
 Delta R.T.: -0.005 min
 Response: 34369701
 Conc: 13.75 ng/ml

Instrument :
 ECD_S
 ClientSampleId :



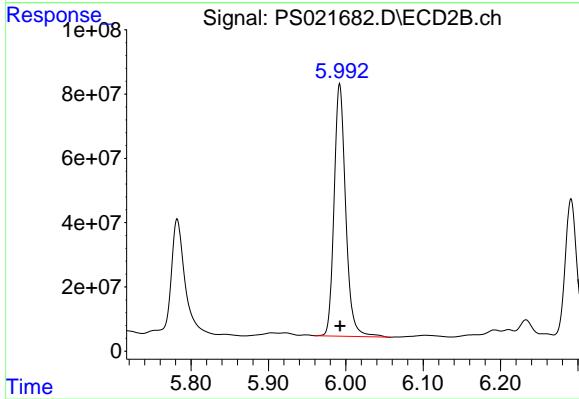
#1 Dalapon

R.T.: 2.555 min
 Delta R.T.: -0.002 min
 Response: -640267541
 Conc: N.D.



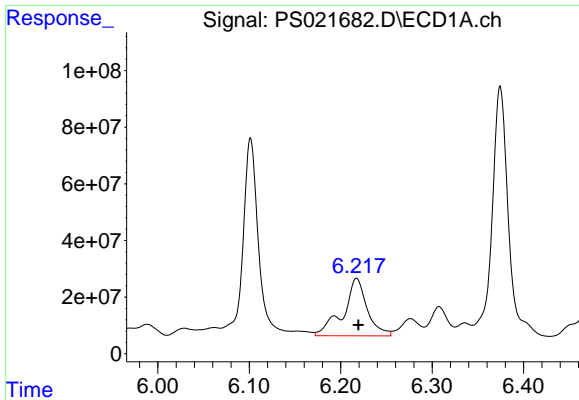
#2 3,5-DICHLOROBENZOIC ACID

R.T.: 5.749 min
 Delta R.T.: 0.000 min
 Response: 1203403488
 Conc: 311.10 ng/ml



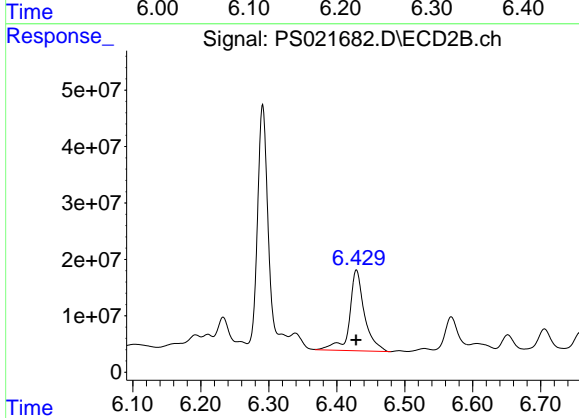
#2 3,5-DICHLOROBENZOIC ACID

R.T.: 5.992 min
 Delta R.T.: 0.000 min
 Response: 820291121
 Conc: 297.66 ng/ml

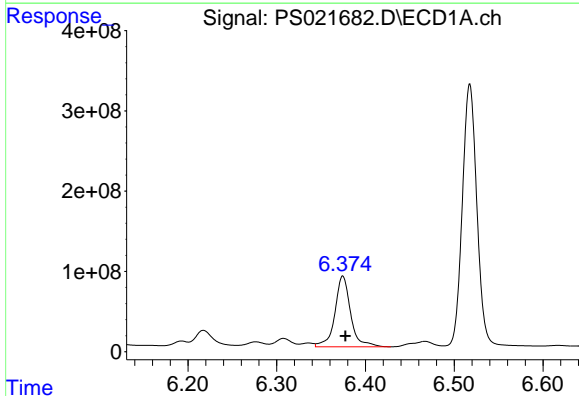


#3 4-Nitrophenol
 R.T.: 6.218 min
 Delta R.T.: -0.002 min
 Response: 370421915
 Conc: 254.13 ng/ml

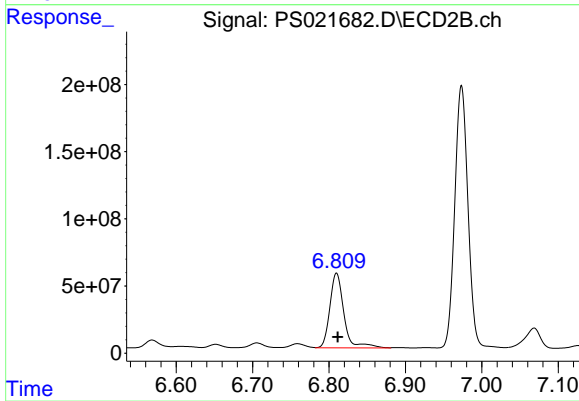
Instrument :
 ECD_S
 ClientSampleId :



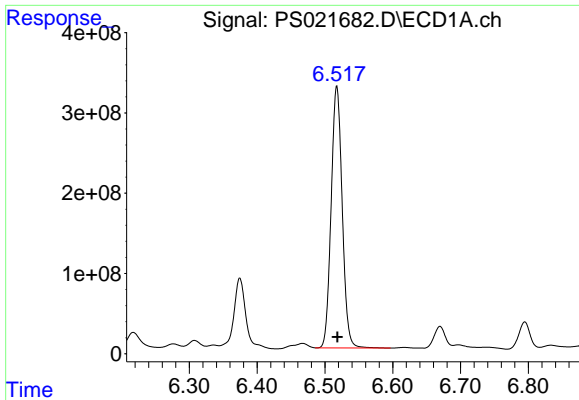
#3 4-Nitrophenol
 R.T.: 6.429 min
 Delta R.T.: 0.000 min
 Response: 218666125
 Conc: 199.47 ng/ml



#4 2,4-DCAA
 R.T.: 6.375 min
 Delta R.T.: -0.003 min
 Response: 1082221359
 Conc: 388.79 ng/ml



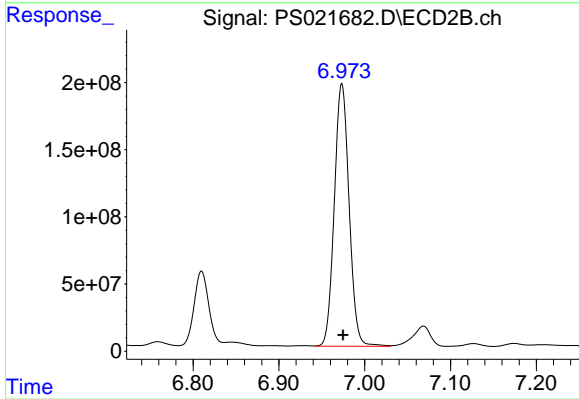
#4 2,4-DCAA
 R.T.: 6.810 min
 Delta R.T.: -0.001 min
 Response: 708836741
 Conc: 394.52 ng/ml



#5 DICAMBA

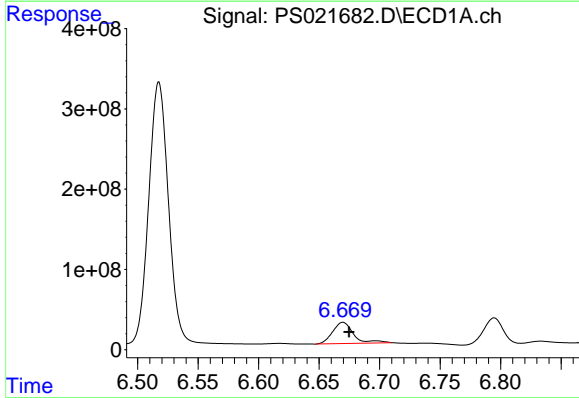
R.T.: 6.518 min
 Delta R.T.: 0.000 min
 Response: 3692366952
 Conc: 301.98 ng/ml

Instrument :
 ECD_S
 ClientSampleId :



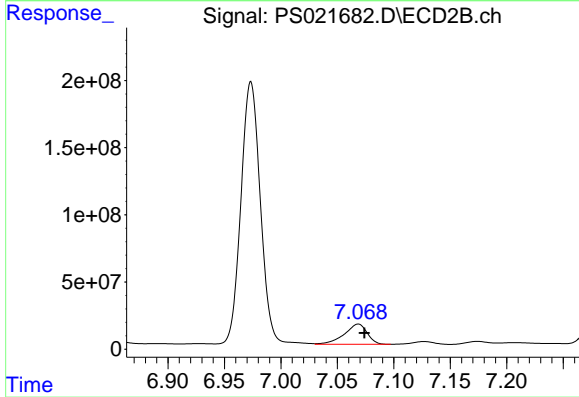
#5 DICAMBA

R.T.: 6.973 min
 Delta R.T.: -0.001 min
 Response: 2340016911
 Conc: 275.21 ng/ml



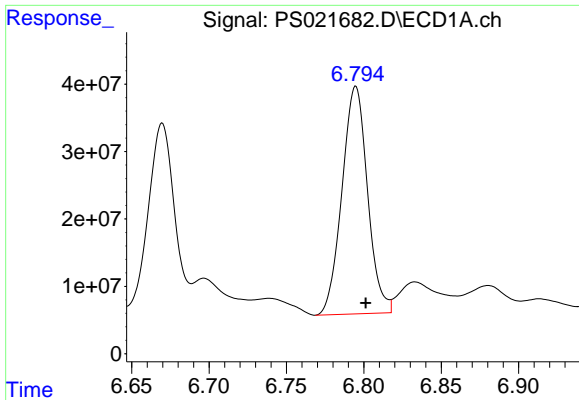
#6 MCP

R.T.: 6.670 min
 Delta R.T.: -0.005 min
 Response: 318757130
 Conc: 33.27 ug/ml



#6 MCP

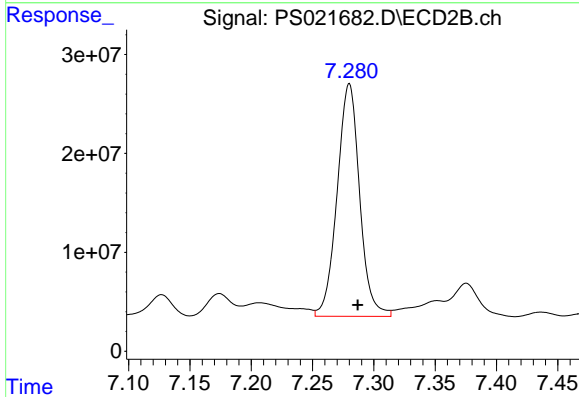
R.T.: 7.068 min
 Delta R.T.: -0.006 min
 Response: 212365824
 Conc: 32.02 ug/ml



#7 MCPA

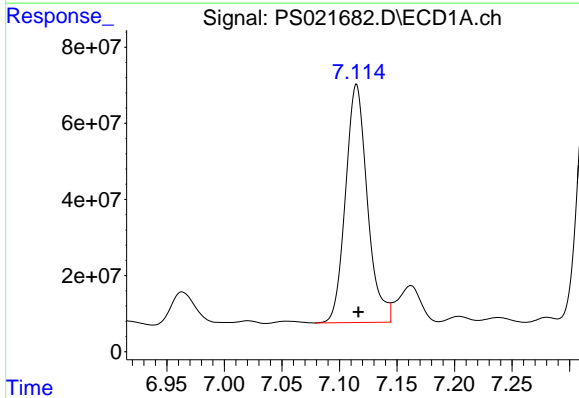
R.T.: 6.795 min
 Delta R.T.: -0.006 min
 Response: 387827222
 Conc: 30.03 ug/ml

Instrument :
 ECD_S
 ClientSampleId :



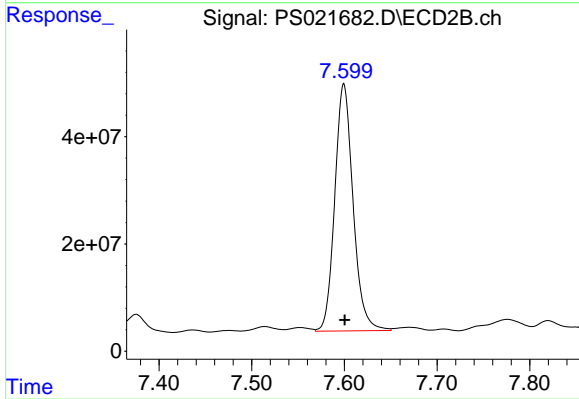
#7 MCPA

R.T.: 7.280 min
 Delta R.T.: -0.007 min
 Response: 300130994
 Conc: 33.09 ug/ml



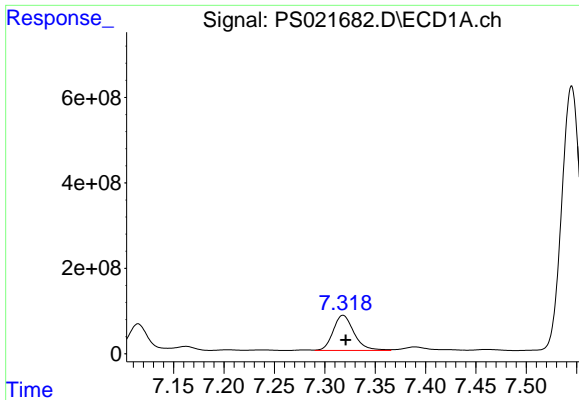
#8 DICHLORPROP

R.T.: 7.115 min
 Delta R.T.: -0.002 min
 Response: 830437236
 Conc: 257.48 ng/ml



#8 DICHLORPROP

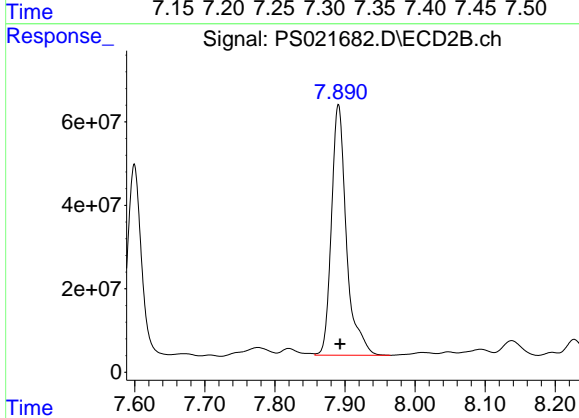
R.T.: 7.599 min
 Delta R.T.: 0.000 min
 Response: 632695027
 Conc: 296.55 ng/ml



#9 2,4-D

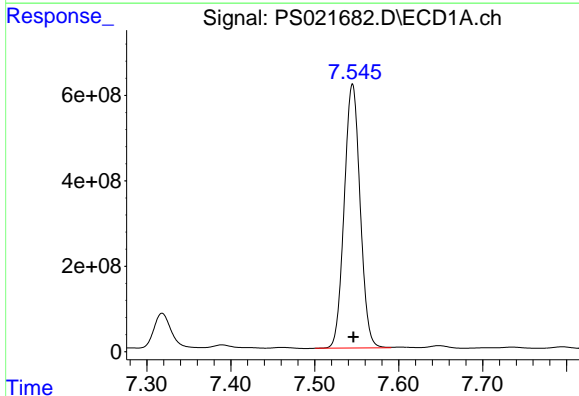
R.T.: 7.318 min
Delta R.T.: -0.003 min
Response: 1192509516
Conc: 307.05 ng/ml

Instrument :
ECD_S
ClientSampleId :



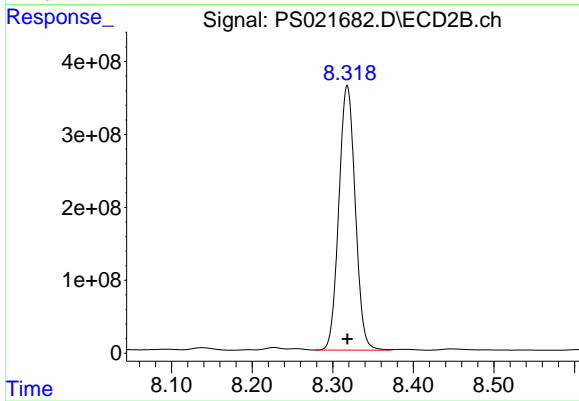
#9 2,4-D

R.T.: 7.891 min
Delta R.T.: -0.002 min
Response: 891706124
Conc: 352.94 ng/ml



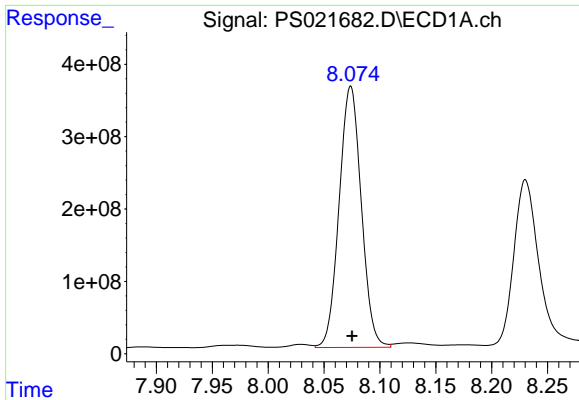
#10 Pentachlorophenol

R.T.: 7.545 min
Delta R.T.: -0.001 min
Response: 8143464593
Conc: 195.50 ng/ml



#10 Pentachlorophenol

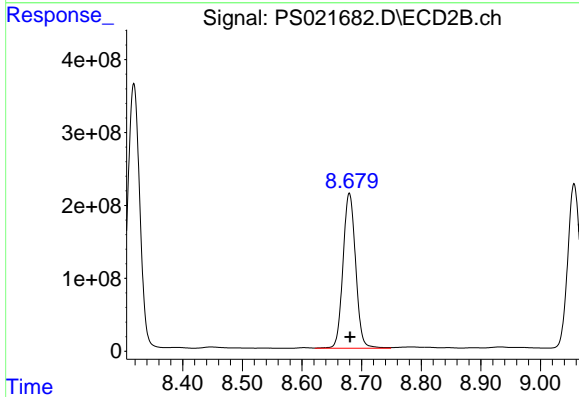
R.T.: 8.318 min
Delta R.T.: 0.000 min
Response: 5119511465
Conc: 178.39 ng/ml



#11 2,4,5-TP (SILVEX)

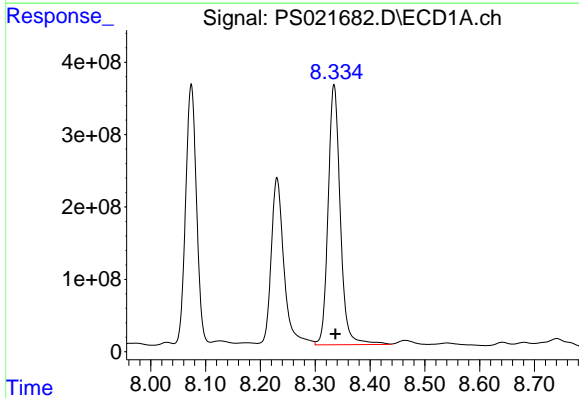
R.T.: 8.074 min
 Delta R.T.: -0.001 min
 Response: 4981703630
 Conc: 270.36 ng/ml

Instrument :
 ECD_S
 ClientSampleId :



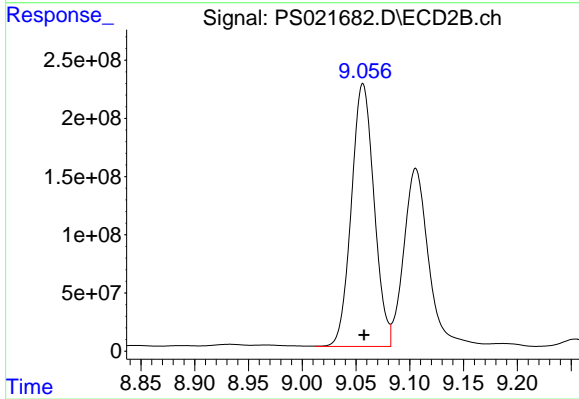
#11 2,4,5-TP (SILVEX)

R.T.: 8.679 min
 Delta R.T.: -0.001 min
 Response: 3134204367
 Conc: 263.59 ng/ml



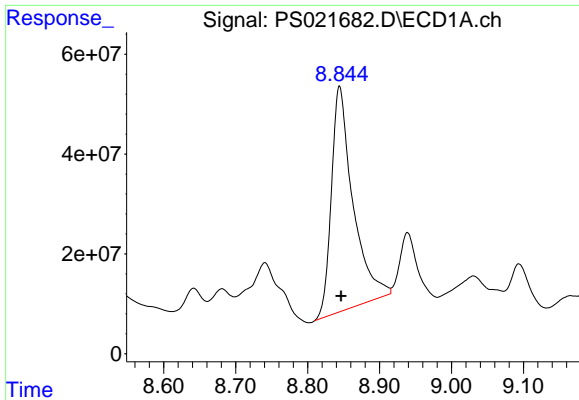
#12 2,4,5-T

R.T.: 8.334 min
 Delta R.T.: -0.002 min
 Response: 5530674397
 Conc: 286.93 ng/ml



#12 2,4,5-T

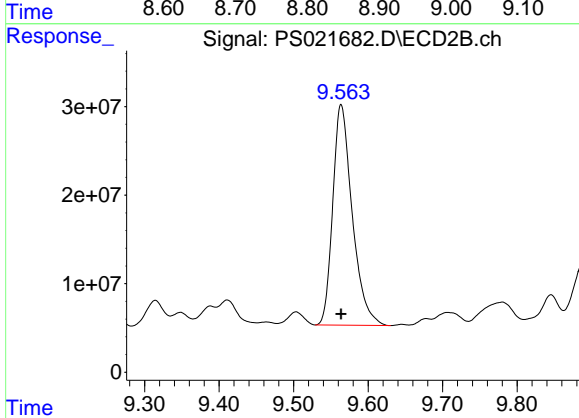
R.T.: 9.056 min
 Delta R.T.: 0.000 min
 Response: 3316043657
 Conc: 296.87 ng/ml



#13 2,4-DB

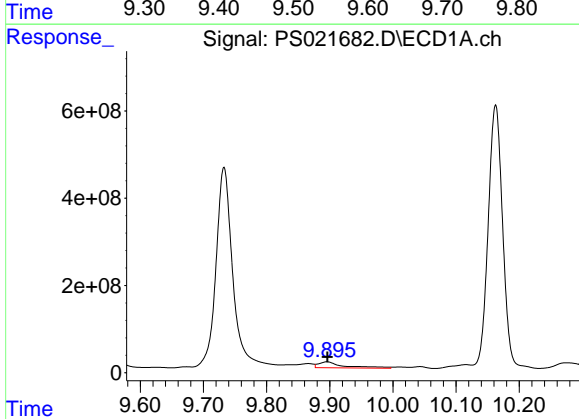
R.T.: 8.845 min
 Delta R.T.: -0.002 min
 Response: 940075973
 Conc: 296.98 ng/ml

Instrument :
 ECD_S
 ClientSampleId :



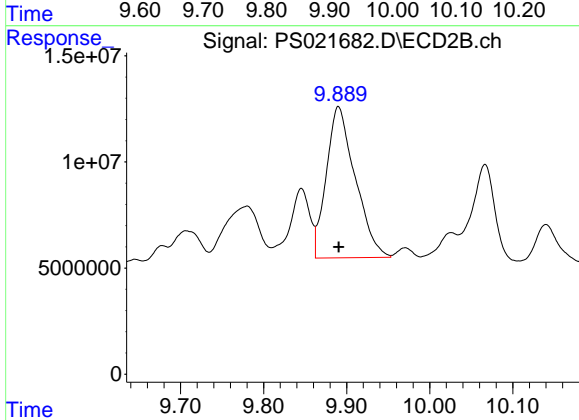
#13 2,4-DB

R.T.: 9.564 min
 Delta R.T.: 0.000 min
 Response: 452275895
 Conc: 301.87 ng/ml



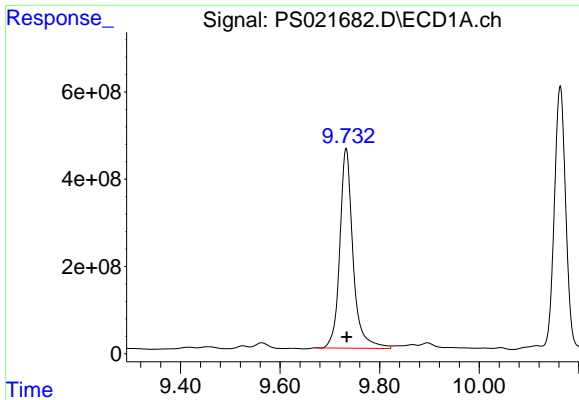
#14 DINOSEB

R.T.: 9.896 min
 Delta R.T.: 0.000 min
 Response: 386484288
 Conc: 23.55 ng/ml



#14 DINOSEB

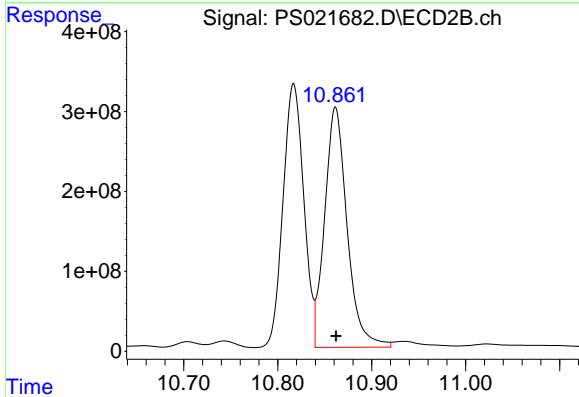
R.T.: 9.890 min
 Delta R.T.: 0.000 min
 Response: 171909045
 Conc: 20.68 ng/ml



#15 Picloram

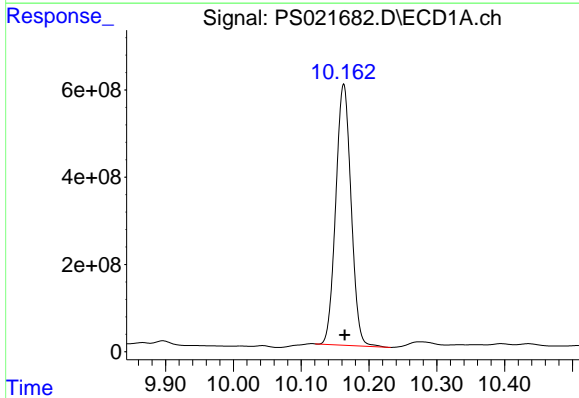
R.T.: 9.733 min
 Delta R.T.: -0.001 min
 Response: 8422397031
 Conc: 296.90 ng/ml

Instrument :
 ECD_S
 ClientSampleId :



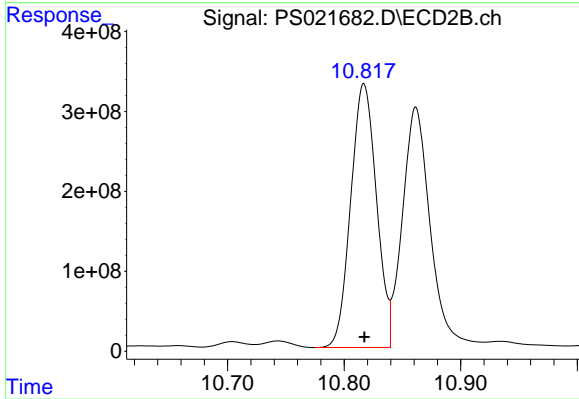
#15 Picloram

R.T.: 10.862 min
 Delta R.T.: 0.000 min
 Response: 4989318586
 Conc: 281.75 ng/ml



#16 DCPA

R.T.: 10.163 min
 Delta R.T.: -0.002 min
 Response: 9372540092
 Conc: 379.40 ng/ml



#16 DCPA

R.T.: 10.817 min
 Delta R.T.: 0.000 min
 Response: 5060808512
 Conc: 363.05 ng/ml