

Data Path : Z:\pestpcbsrv\HPCHEM1\ECD_S\Data\PS011020\
 Data File : PS008369.D
 Signal(s) : Signal #1: ECD1A.ch Signal #2: ECD2B.ch
 Acq On : 10 Jan 2020 18:31
 Operator : DD\AJ
 Sample : HSTDCCC750
 Misc :
 ALS Vial : 3 Sample Multiplier: 1

Instrument :
 ECD_S
 ClientSampleId :

Integration File signal 1: autoint1.e
 Integration File signal 2: autoint2.e
 Quant Time: Jan 11 01:27:20 2020
 Quant Method : Z:\pestpcbsrv\HPCHEM1\ECD_S\Method\PS010820.M
 Quant Title : 8080.M
 QLast Update : Wed Jan 08 11:00:59 2020
 Response via : Initial Calibration
 Integrator: ChemStation

Volume Inj. : 2 µl
 Signal #1 Phase : Rtx-CLPesticides Signal #2 Phase: Rtx-CLPesticides2
 Signal #1 Info : 30M x 0.32mm x0.5 Signal #2 Info : 30M x 0.32mm x 0.25µm

	Compound	RT#1	RT#2	Resp#1	Resp#2	ng/ml	ng/ml

System Monitoring Compounds							
4) S	2,4-DCAA	6.275	5.971	1428.1E6	640.0E6	808.812	675.535
Target Compounds							
1) T	Dalapon	2.537	2.230	1758.3E6	796.6E6	685.815	628.365
2) T	3,5-DICHL...	5.495	5.128	1805.6E6	886.6E6	753.851	634.544
3) T	4-Nitroph...	6.110	5.578	704.4E6	359.0E6	723.218	604.597
5) T	DICAMBA	6.469	6.142	5307.8E6	2581.9E6	772.299	645.637
6) T	MCP P	6.636	6.237	388.6E6	194.0E6	76.237	63.785
7) T	MCPA	6.784	6.452	563.2E6	269.7E6	77.070	63.160
8) T	DICHLORPROP	7.158	6.766	1260.7E6	614.5E6	768.454	636.025
9) T	2,4-D	7.386	7.059	1393.8E6	746.3E6	766.217	636.637
10) T	Pentachlo...	7.701	7.495	18668.9E6	8802.2E6	767.924	651.760
11) T	2,4,5-TP ...	8.247	7.854	7293.7E6	3390.0E6	781.011	648.600
12) T	2,4,5-T	8.531	8.233	7205.0E6	3432.9E6	780.893	649.181
13) T	2,4-DB	9.084	8.741	1064.3E6	452.0E6	767.760	638.516
14) T	DINOSEB	10.250	9.077	5346.9E6	2365.0E6	745.233	626.042
15) T	Picloram	10.061	10.057	9995.1E6	5006.9E6	800.784	673.938
16) T	DCPA	10.514	10.008	9208.1E6	4253.2E6	775.889	652.664

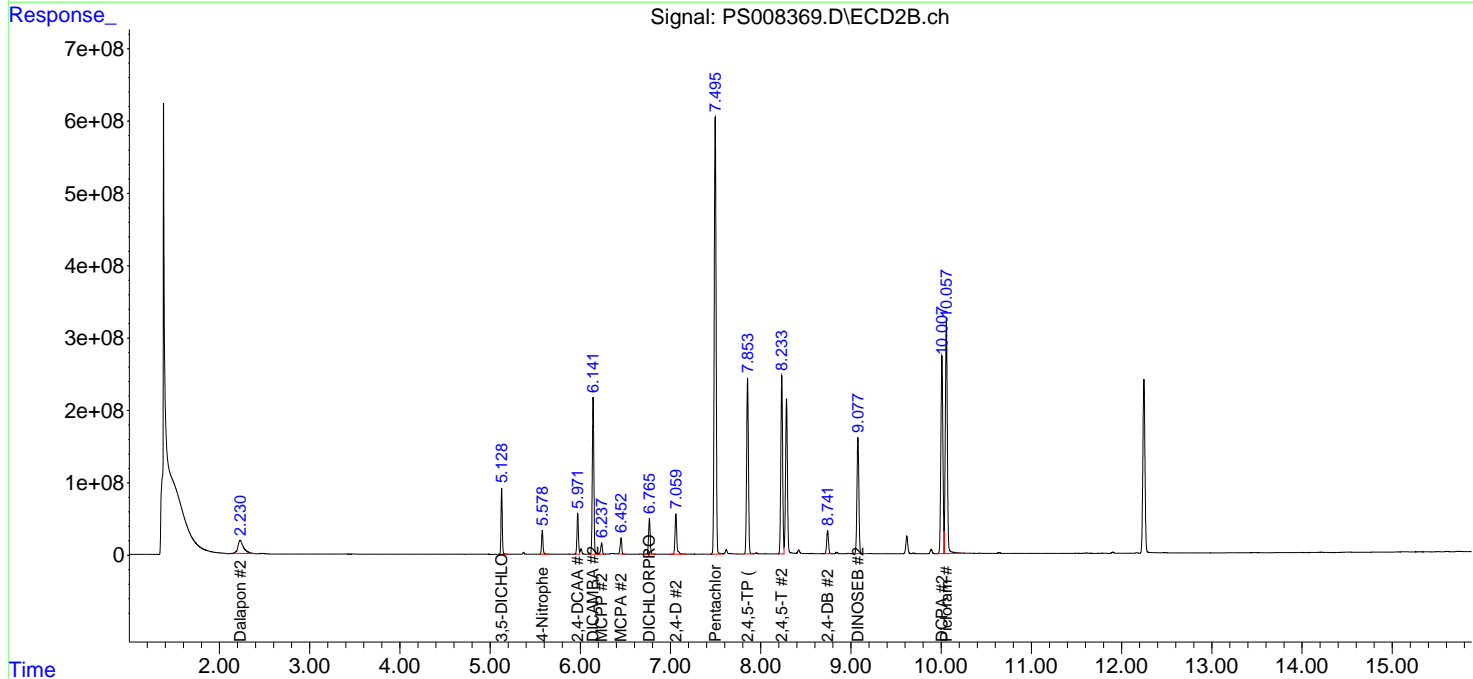
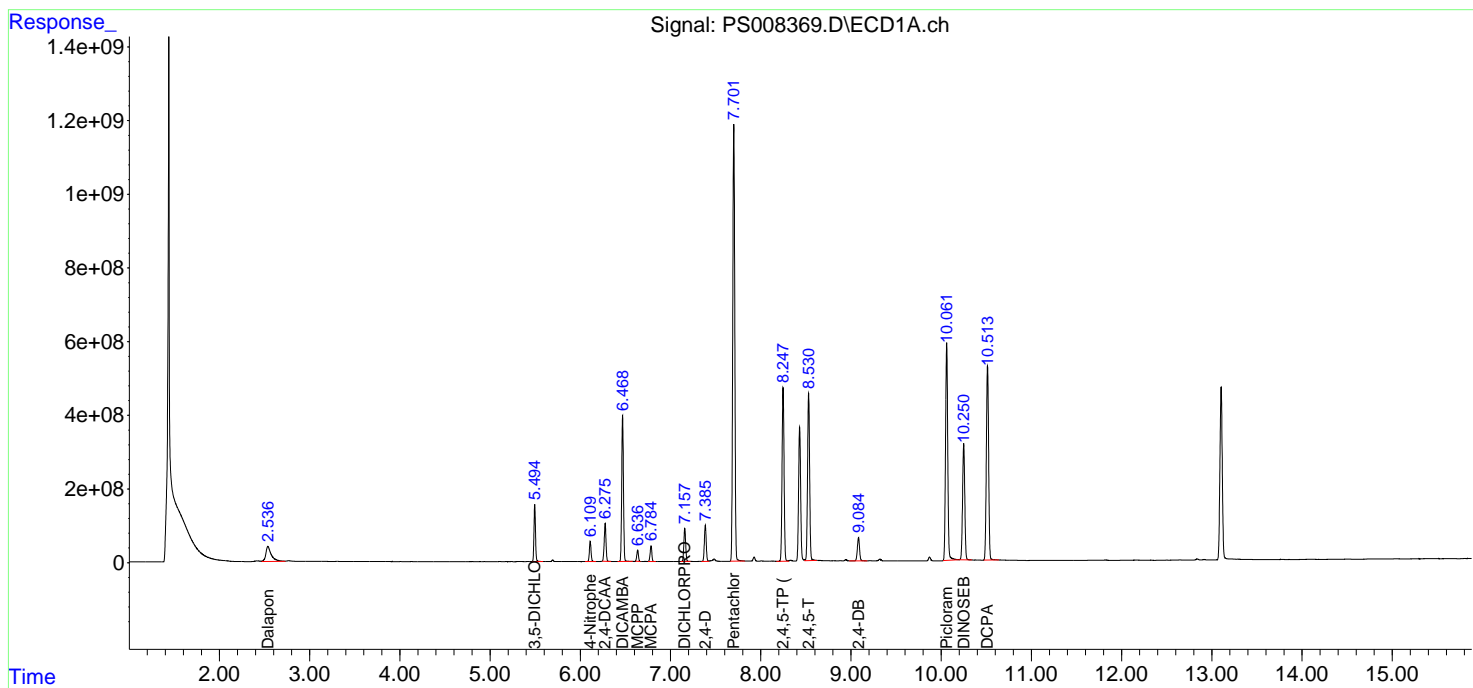
(f)=RT Delta > 1/2 Window (#)=Amounts differ by > 25% (m)=manual int.

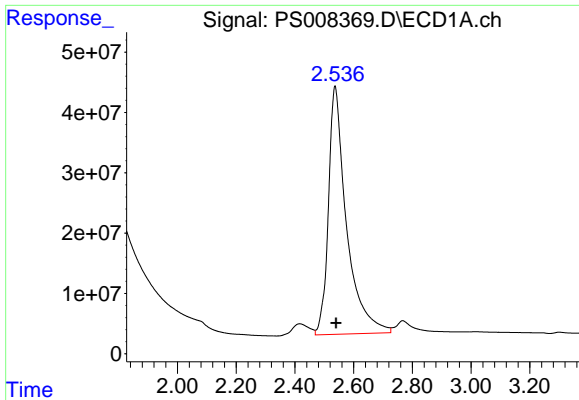
Data Path : Z:\pestpcbsrv\HPCHEM1\ECD_S\Data\PS011020\
 Data File : PS008369.D
 Signal(s) : Signal #1: ECD1A.ch Signal #2: ECD2B.ch
 Acq On : 10 Jan 2020 18:31
 Operator : DD\AJ
 Sample : HSTDCCC750
 Misc :
 ALS Vial : 3 Sample Multiplier: 1

Instrument :
 ECD_S
 ClientSampled :

Integration File signal 1: autoint1.e
 Integration File signal 2: autoint2.e
 Quant Time: Jan 11 01:27:20 2020
 Quant Method : Z:\pestpcbsrv\HPCHEM1\ECD_S\Method\PS010820.M
 Quant Title : 8080.M
 QLast Update : Wed Jan 08 11:00:59 2020
 Response via : Initial Calibration
 Integrator: ChemStation

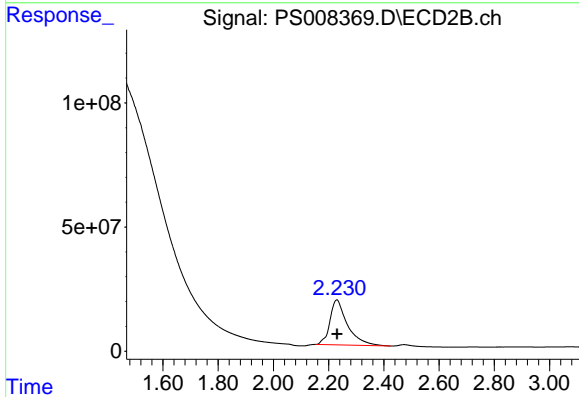
Volume Inj. : 2 µl
 Signal #1 Phase : Rtx-CLPesticides Signal #2 Phase: Rtx-CLPesticides2
 Signal #1 Info : 30M x 0.32mm x0.5 Signal #2 Info : 30M x 0.32mm x 0.25µm



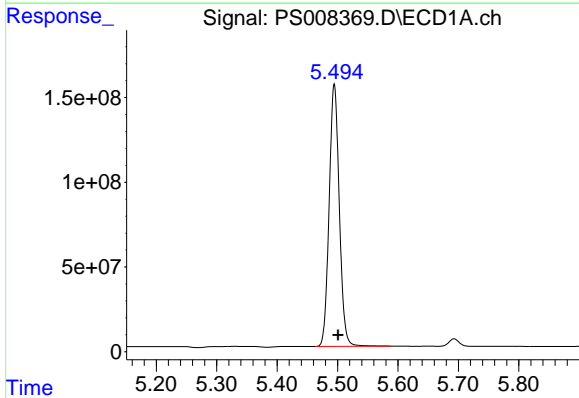


#1 Dalapon
 R.T.: 2.537 min
 Delta R.T.: -0.003 min
 Response: 1758325888
 Conc: 685.81 ng/ml

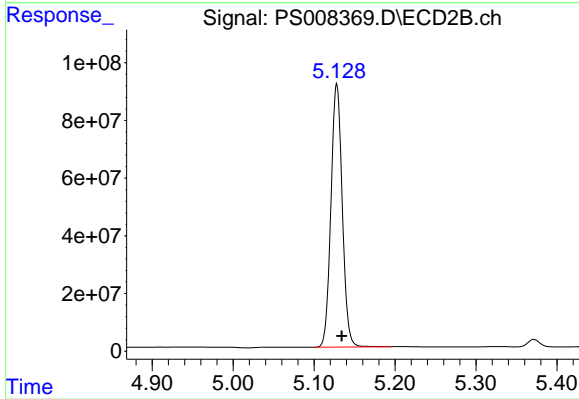
Instrument :
 ECD_S
 ClientSampleId :



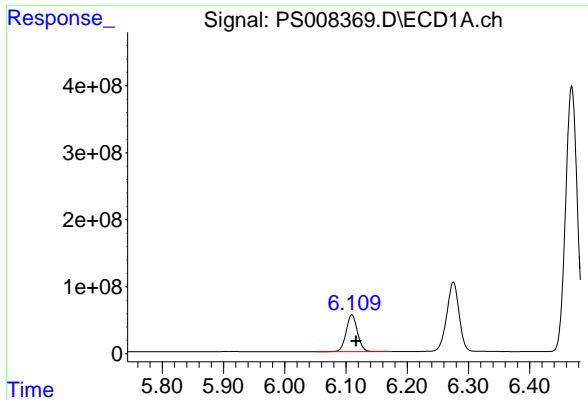
#1 Dalapon
 R.T.: 2.230 min
 Delta R.T.: 0.000 min
 Response: 796604732
 Conc: 628.36 ng/ml



#2 3,5-DICHLOROBENZOIC ACID
 R.T.: 5.495 min
 Delta R.T.: -0.006 min
 Response: 1805599063
 Conc: 753.85 ng/ml

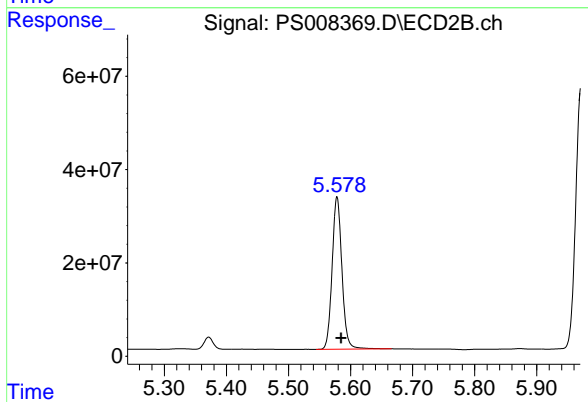


#2 3,5-DICHLOROBENZOIC ACID
 R.T.: 5.128 min
 Delta R.T.: -0.006 min
 Response: 886569959
 Conc: 634.54 ng/ml

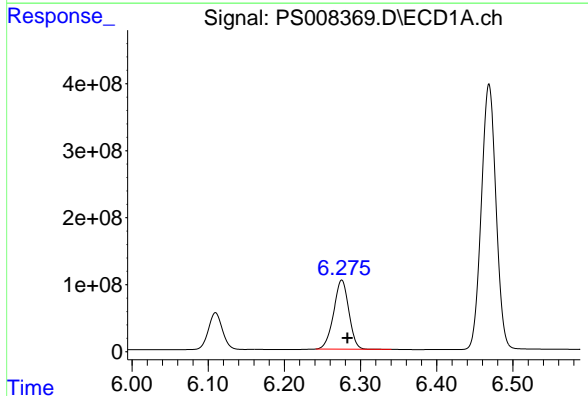


#3 4-Nitrophenol
R.T.: 6.110 min
Delta R.T.: -0.007 min
Response: 704389349
Conc: 723.22 ng/ml

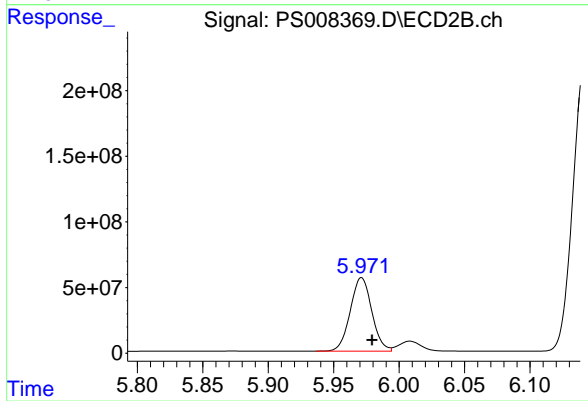
Instrument :
ECD_S
ClientSampleId :



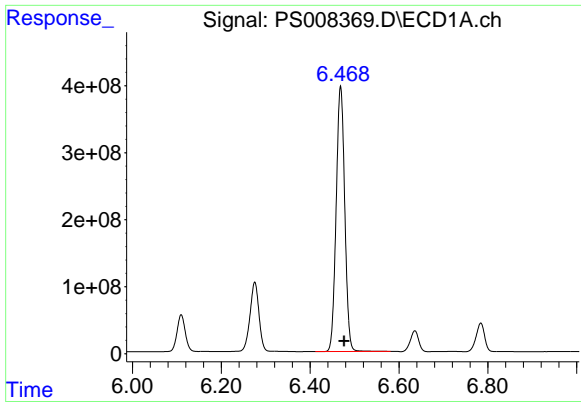
#3 4-Nitrophenol
R.T.: 5.578 min
Delta R.T.: -0.007 min
Response: 358977556
Conc: 604.60 ng/ml



#4 2,4-DCAA
R.T.: 6.275 min
Delta R.T.: -0.007 min
Response: 1428122939
Conc: 808.81 ng/ml



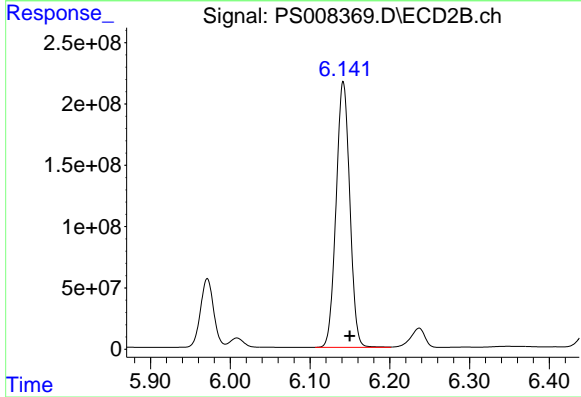
#4 2,4-DCAA
R.T.: 5.971 min
Delta R.T.: -0.008 min
Response: 640044680
Conc: 675.54 ng/ml



#5 DICAMBA

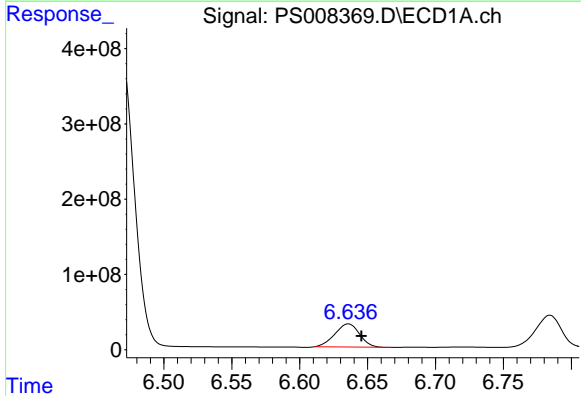
R.T.: 6.469 min
 Delta R.T.: -0.007 min
 Response: 5307783465
 Conc: 772.30 ng/ml

Instrument :
 ECD_S
 ClientSampled :



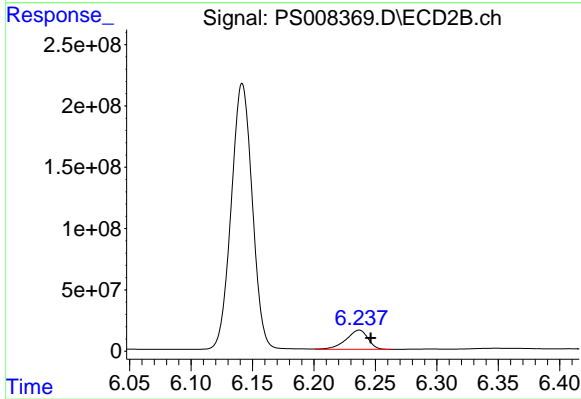
#5 DICAMBA

R.T.: 6.142 min
 Delta R.T.: -0.008 min
 Response: 2581930288
 Conc: 645.64 ng/ml



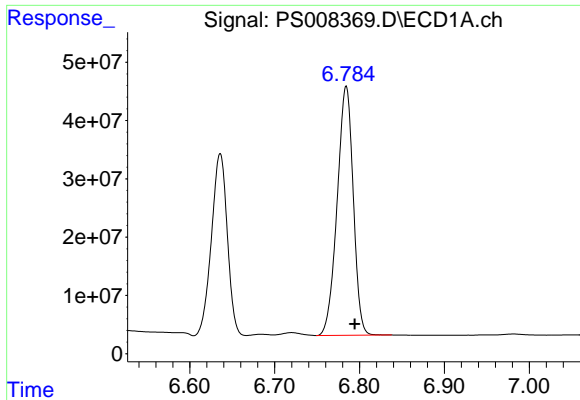
#6 MCP

R.T.: 6.636 min
 Delta R.T.: -0.010 min
 Response: 388566975
 Conc: 76.24 ug/ml



#6 MCP

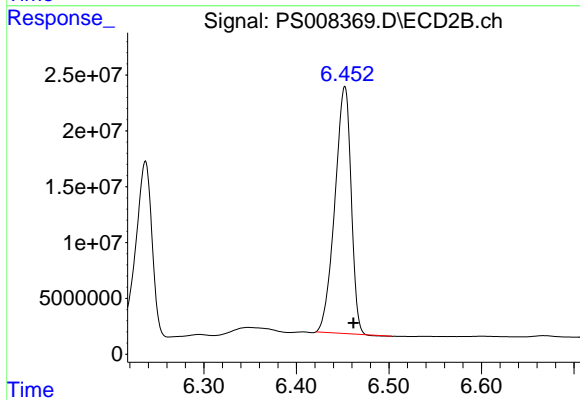
R.T.: 6.237 min
 Delta R.T.: -0.009 min
 Response: 193953294
 Conc: 63.78 ug/ml



#7 MCPA

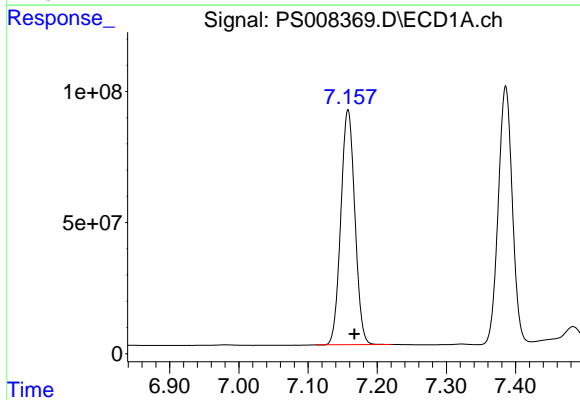
R.T.: 6.784 min
 Delta R.T.: -0.010 min
 Response: 563175286
 Conc: 77.07 ug/ml

Instrument :
 ECD_S
 ClientSampleId :



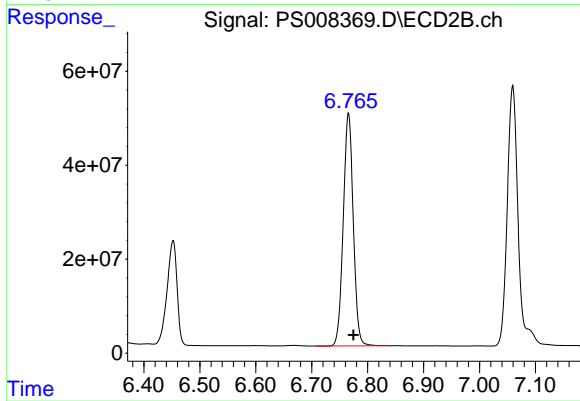
#7 MCPA

R.T.: 6.452 min
 Delta R.T.: -0.009 min
 Response: 269685987
 Conc: 63.16 ug/ml



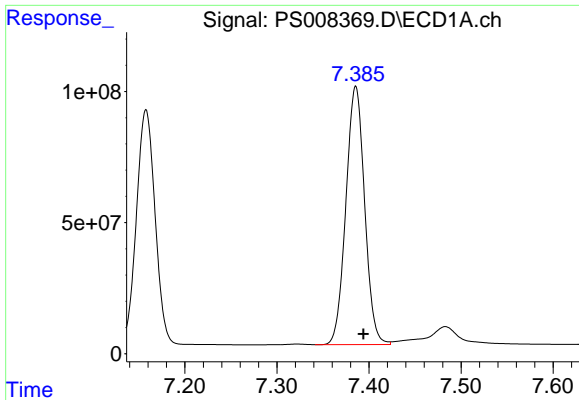
#8 DICHLORPROP

R.T.: 7.158 min
 Delta R.T.: -0.009 min
 Response: 1260676966
 Conc: 768.45 ng/ml



#8 DICHLORPROP

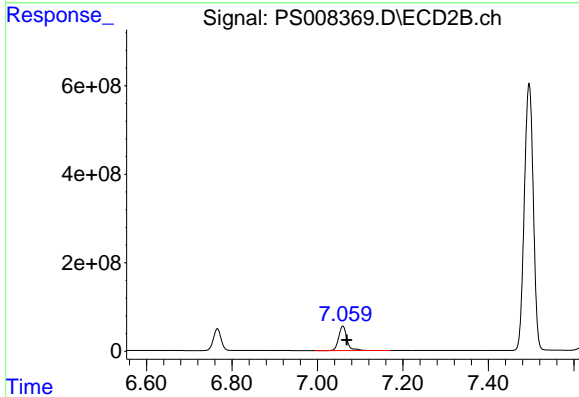
R.T.: 6.766 min
 Delta R.T.: -0.009 min
 Response: 614494358
 Conc: 636.02 ng/ml



#9 2,4-D

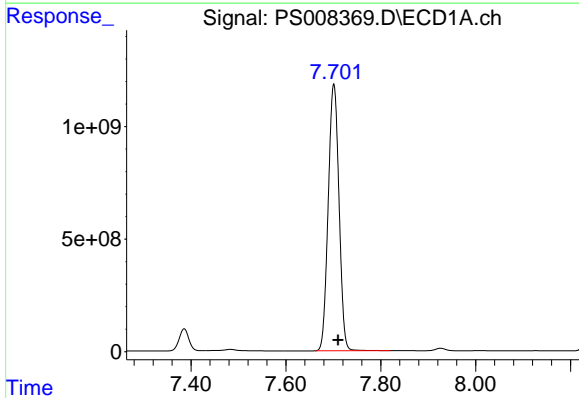
R.T.: 7.386 min
Delta R.T.: -0.008 min
Response: 1393828024
Conc: 766.22 ng/ml

Instrument :
ECD_S
ClientSampled :



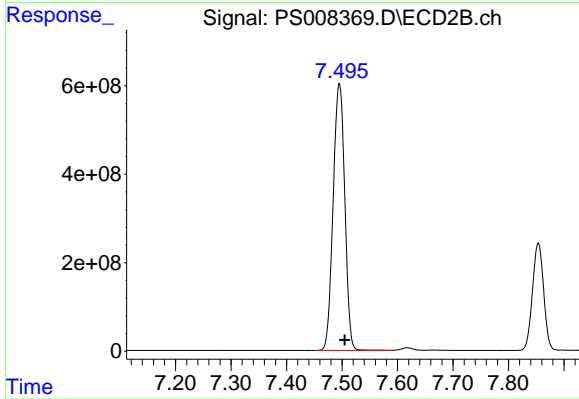
#9 2,4-D

R.T.: 7.059 min
Delta R.T.: -0.009 min
Response: 746293660
Conc: 636.64 ng/ml



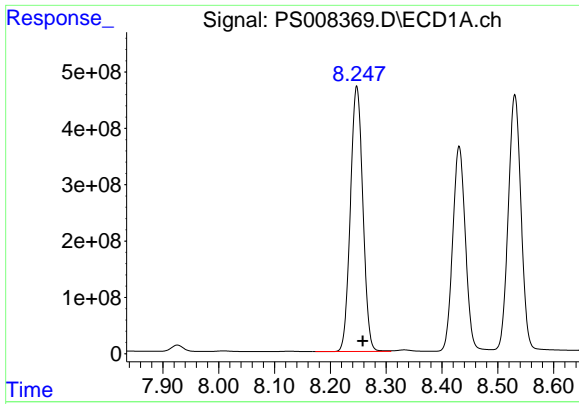
#10 Pentachlorophenol

R.T.: 7.701 min
Delta R.T.: -0.009 min
Response: 18668856578
Conc: 767.92 ng/ml



#10 Pentachlorophenol

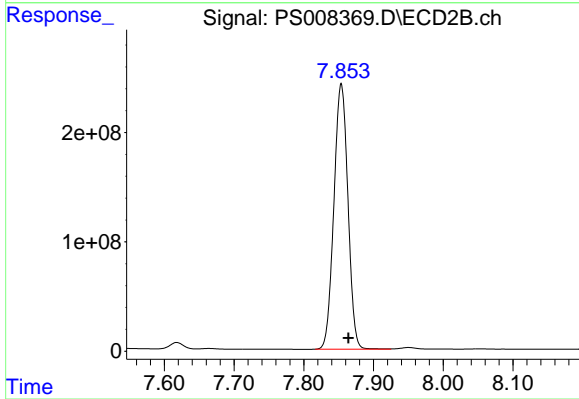
R.T.: 7.495 min
Delta R.T.: -0.010 min
Response: 8802224628
Conc: 651.76 ng/ml



#11 2,4,5-TP (SILVEX)

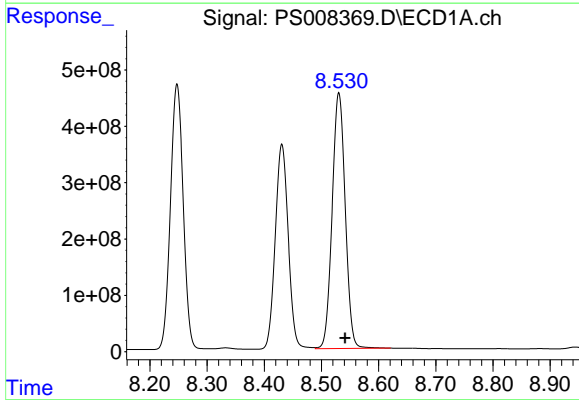
R.T.: 8.247 min
 Delta R.T.: -0.011 min
 Response: 7293683676
 Conc: 781.01 ng/ml

Instrument :
 ECD_S
 ClientSampleId :



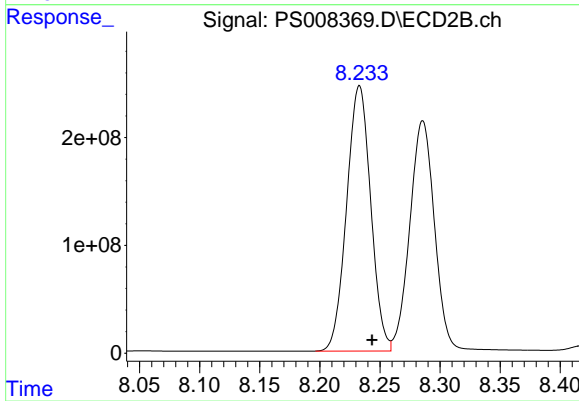
#11 2,4,5-TP (SILVEX)

R.T.: 7.854 min
 Delta R.T.: -0.010 min
 Response: 3389983015
 Conc: 648.60 ng/ml



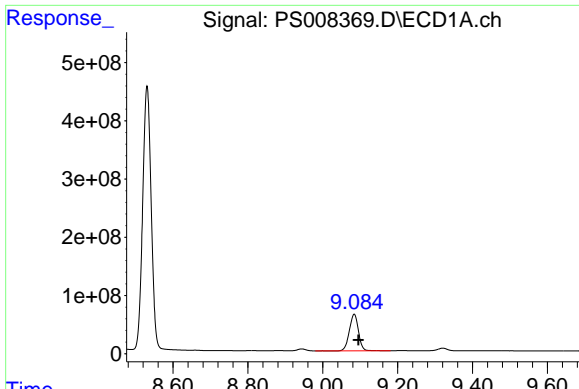
#12 2,4,5-T

R.T.: 8.531 min
 Delta R.T.: -0.011 min
 Response: 7204950519
 Conc: 780.89 ng/ml



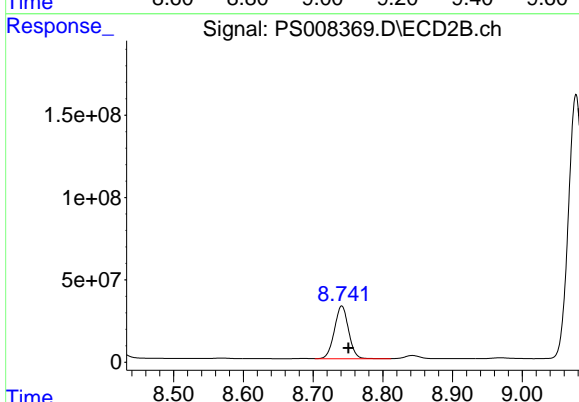
#12 2,4,5-T

R.T.: 8.233 min
 Delta R.T.: -0.010 min
 Response: 3432947406
 Conc: 649.18 ng/ml

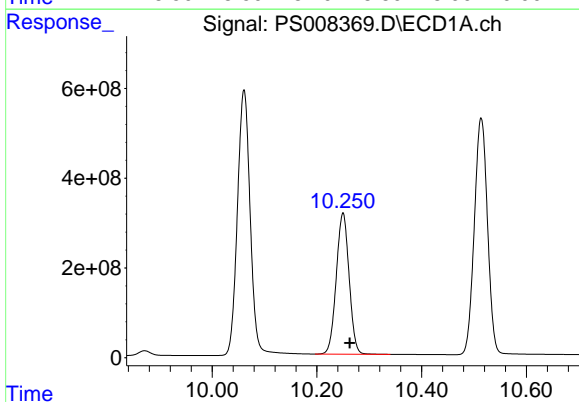


#13 2,4-DB
 R.T.: 9.084 min
 Delta R.T.: -0.011 min
 Response: 1064303687
 Conc: 767.76 ng/ml

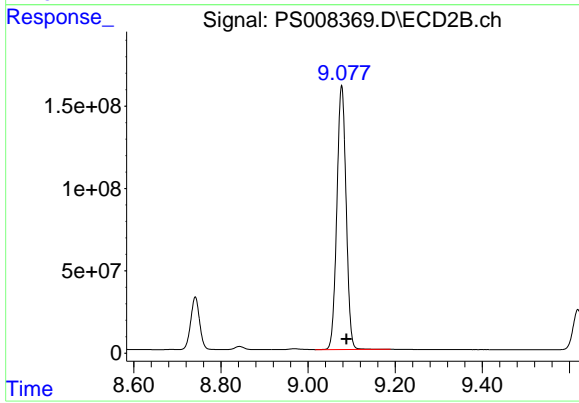
Instrument :
 ECD_S
 ClientSampled :



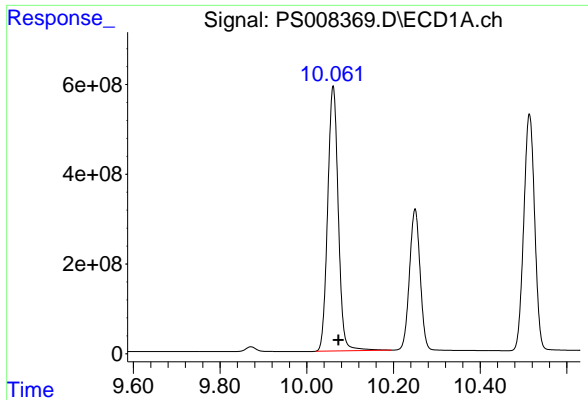
#13 2,4-DB
 R.T.: 8.741 min
 Delta R.T.: -0.010 min
 Response: 452004115
 Conc: 638.52 ng/ml



#14 DINOSEB
 R.T.: 10.250 min
 Delta R.T.: -0.013 min
 Response: 5346941855
 Conc: 745.23 ng/ml



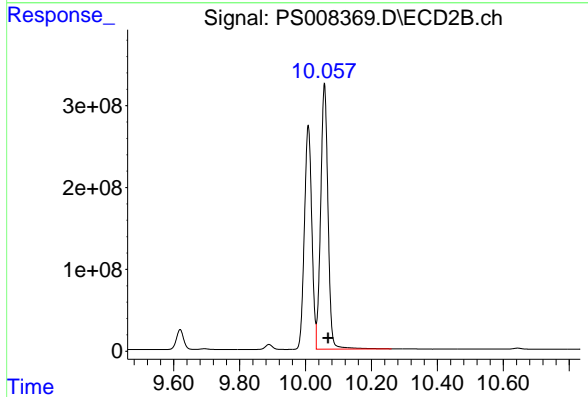
#14 DINOSEB
 R.T.: 9.077 min
 Delta R.T.: -0.011 min
 Response: 2364999980
 Conc: 626.04 ng/ml



#15 Picloram

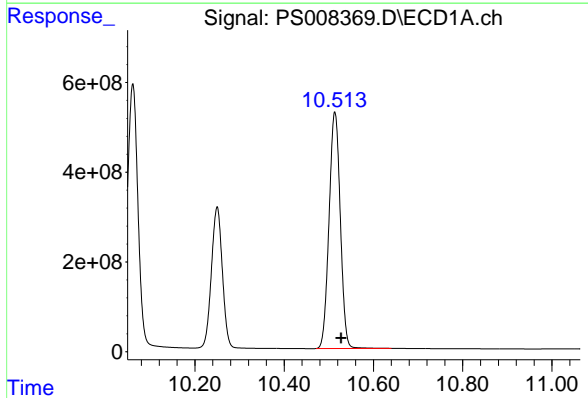
R.T.: 10.061 min
 Delta R.T.: -0.012 min
 Response: 9995147778
 Conc: 800.78 ng/ml

Instrument :
 ECD_S
 ClientSampled :



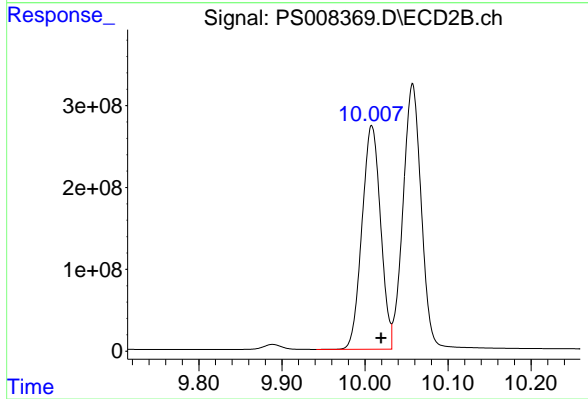
#15 Picloram

R.T.: 10.057 min
 Delta R.T.: -0.011 min
 Response: 5006865094
 Conc: 673.94 ng/ml



#16 DCPA

R.T.: 10.514 min
 Delta R.T.: -0.014 min
 Response: 9208123887
 Conc: 775.89 ng/ml



#16 DCPA

R.T.: 10.008 min
 Delta R.T.: -0.011 min
 Response: 4253193583
 Conc: 652.66 ng/ml