

Data Path : Z:\pestpcbsrv\HPCHEM1\ECD\_S\Data\PS011023\  
 Data File : PS021711.D  
 Signal(s) : Signal #1: ECD1A.ch Signal #2: ECD2B.ch  
 Acq On : 10 Jan 2023 22:42  
 Operator : AR\AJ  
 Sample : 01069-01  
 Misc :  
 ALS Vial : 18 Sample Multiplier: 1

Instrument :  
 ECD\_S  
 ClientSampleId :

Integration File signal 1: autoint1.e  
 Integration File signal 2: autoint2.e  
 Quant Time: Jan 11 07:01:07 2023  
 Quant Method : Z:\pestpcbsrv\HPCHEM1\ECD\_S\Method\PS010923.M  
 Quant Title : 8080.M  
 QLast Update : Tue Jan 10 10:34:52 2023  
 Response via : Initial Calibration  
 Integrator: ChemStation

Volume Inj. : 2 µl  
 Signal #1 Phase : Rtx-CLPesticides Signal #2 Phase: Rtx-CLPesticides2  
 Signal #1 Info : 30M x 0.32mm x0.5 Signal #2 Info : 30M x 0.32mm x 0.25µm

Compound	RT#1	RT#2	Resp#1	Resp#2	ng/ml	ng/ml
-----						
System Monitoring Compounds						
4) S 2,4-DCAA	6.375	6.810	951.8E6	610.2E6	341.943	339.616
Target Compounds						
2) T 3,5-DICHL...	5.749	6.017	26622048	3164205	6.882	1.148 #
3) T 4-Nitroph...	6.238	6.447	21002790	28945709	14.409	26.405 #
6) T MCPP	6.696	7.052	55096405	18183001	5.750	2.742 #
7) T MCPA	6.827	7.277	83382527	377.3E6	6.455	41.597 #
8) T DICHLORPROP	7.145	7.606	131.6E6	79188725	40.817	37.116
9) T 2,4-D	7.304	7.887	-42715485	66610287	N.D.	26.364
10) T Pentachlo...	7.547	8.318	46385511	4071598	1.114	<MDL #
11) T 2,4,5-TP ...	8.092	8.680	74346968	30243578	4.035	2.544 #
12) T 2,4,5-T	8.355	9.061	119.8E6	38285526	6.215	3.428 #
13) T 2,4-DB	8.859	9.572	141.4E6	54318829	44.662	36.255
14) T DINOSEB	9.846f	9.888	1650.7E6	559.2E6	100.568	67.286 #
15) T Picloram	9.775f	10.850	753.4E6	31042580	26.557	1.753 #
16) T DCPA	10.198	10.796	59034721	115.1E6	2.390	8.255 #
-----						

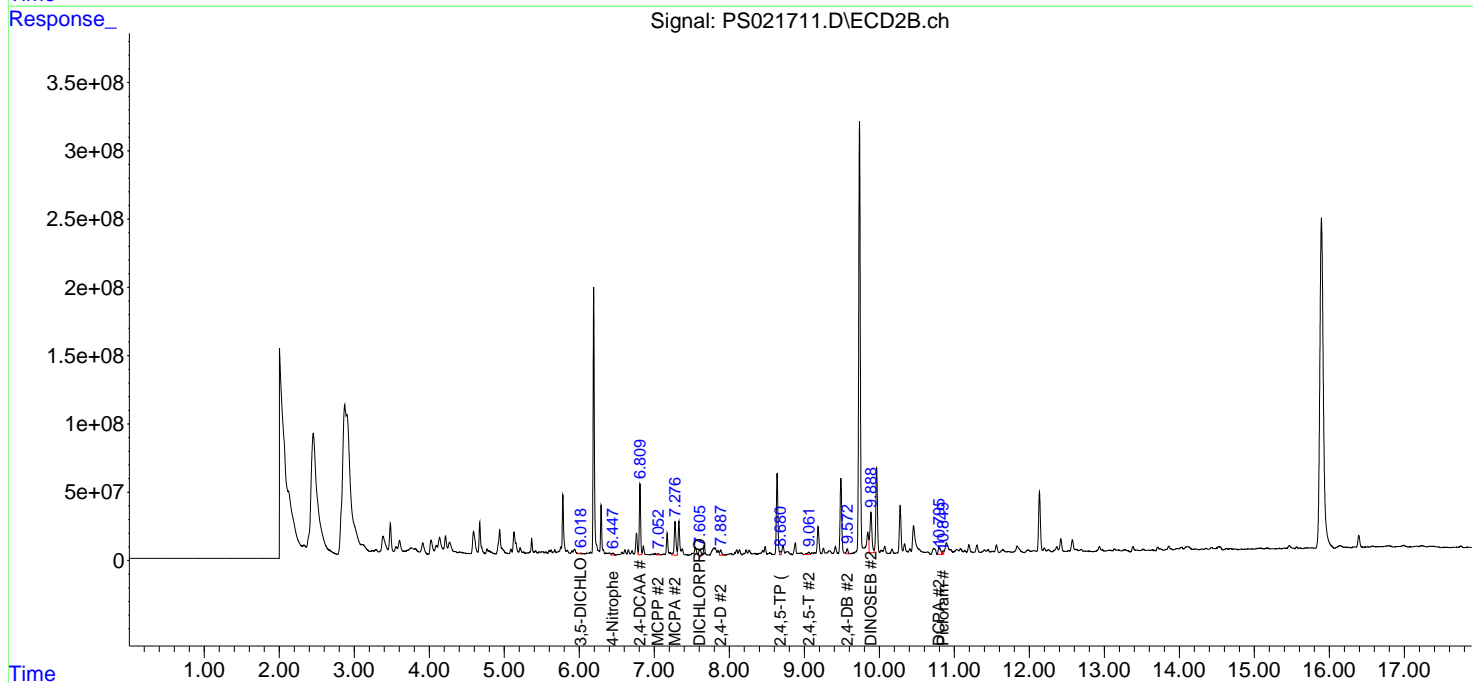
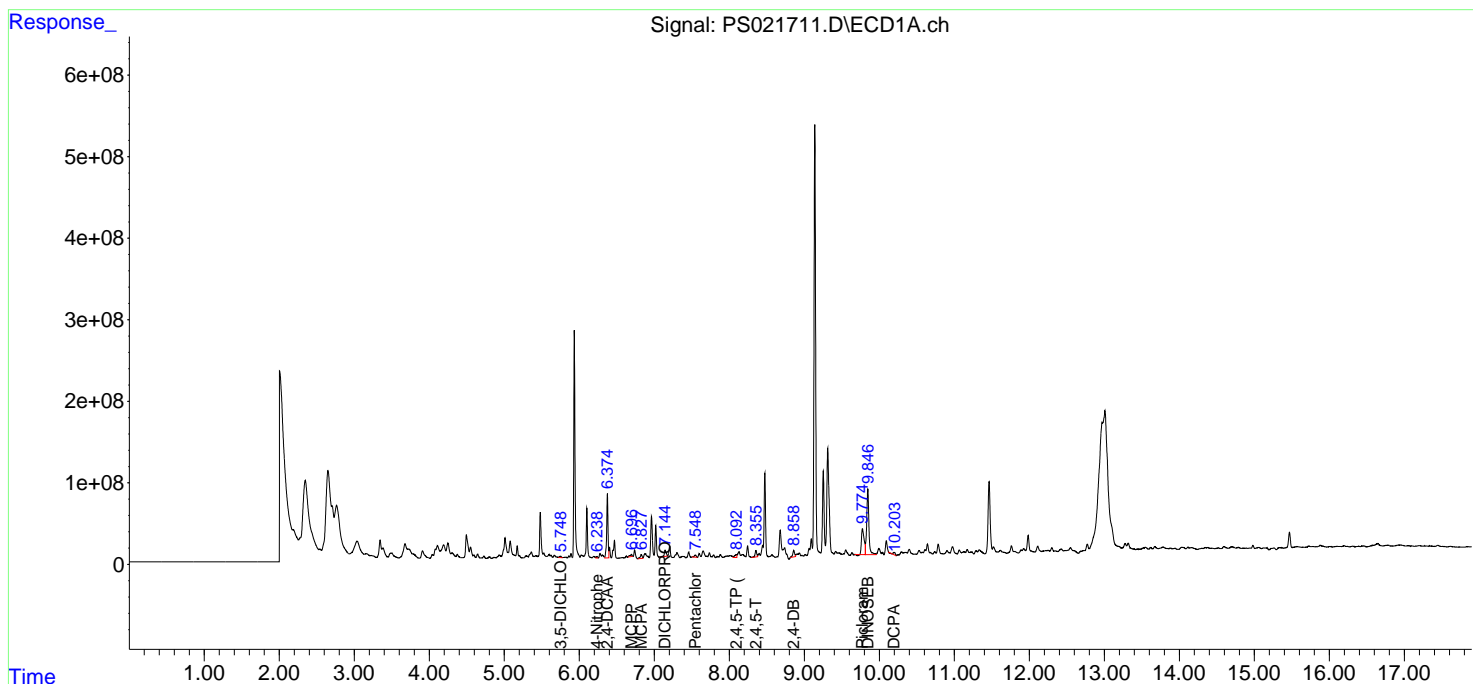
(f)=RT Delta > 1/2 Window (#)=Amounts differ by > 25% (m)=manual int.

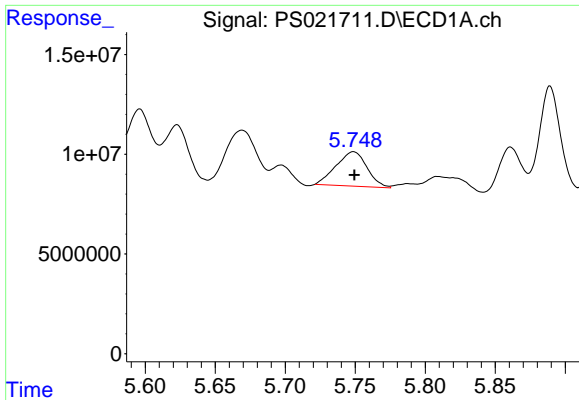
Data Path : Z:\pestpcbsrv\HPCHEM1\ECD\_S\Data\PS011023\  
 Data File : PS021711.D  
 Signal(s) : Signal #1: ECD1A.ch Signal #2: ECD2B.ch  
 Acq On : 10 Jan 2023 22:42  
 Operator : AR\AJ  
 Sample : 01069-01  
 Misc :  
 ALS Vial : 18 Sample Multiplier: 1

Instrument :  
 ECD\_S  
 ClientSampleId :

Integration File signal 1: autoint1.e  
 Integration File signal 2: autoint2.e  
 Quant Time: Jan 11 07:01:07 2023  
 Quant Method : Z:\pestpcbsrv\HPCHEM1\ECD\_S\Method\PS010923.M  
 Quant Title : 8080.M  
 QLast Update : Tue Jan 10 10:34:52 2023  
 Response via : Initial Calibration  
 Integrator: ChemStation

Volume Inj. : 2 µl  
 Signal #1 Phase : Rtx-CLPesticides Signal #2 Phase: Rtx-CLPesticides2  
 Signal #1 Info : 30M x 0.32mm x0.5 Signal #2 Info : 30M x 0.32mm x 0.25µm

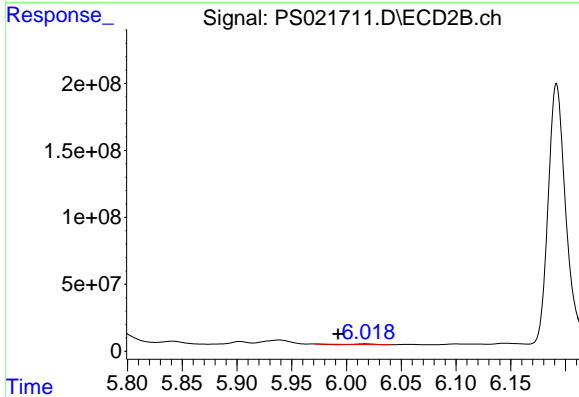




#2 3,5-DICHLORO BENZOIC ACID

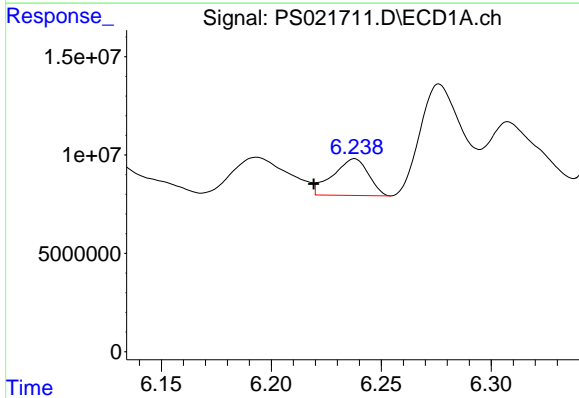
R.T.: 5.749 min  
 Delta R.T.: 0.000 min  
 Response: 26622048  
 Conc: 6.88 ng/ml

Instrument :  
 ECD\_S  
 ClientSampleId :



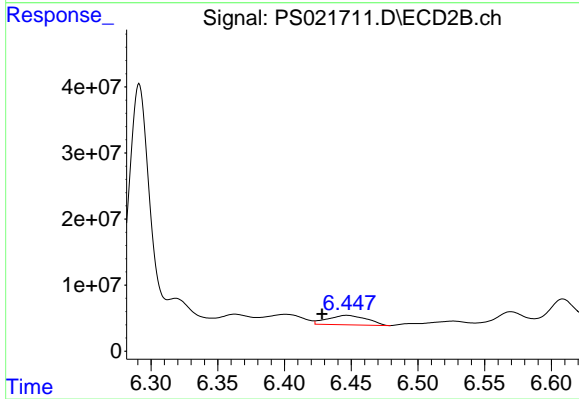
#2 3,5-DICHLORO BENZOIC ACID

R.T.: 6.017 min  
 Delta R.T.: 0.025 min  
 Response: 3164205  
 Conc: 1.15 ng/ml



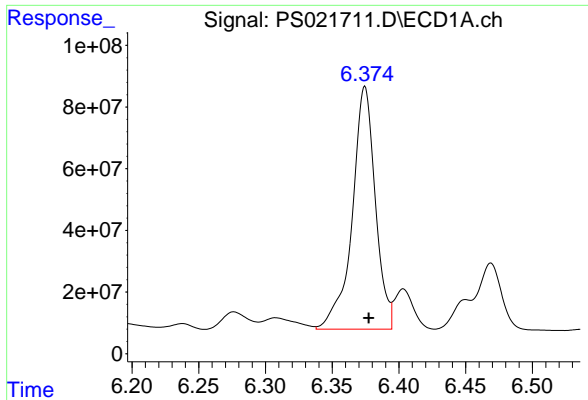
#3 4-Nitrophenol

R.T.: 6.238 min  
 Delta R.T.: 0.018 min  
 Response: 21002790  
 Conc: 14.41 ng/ml



#3 4-Nitrophenol

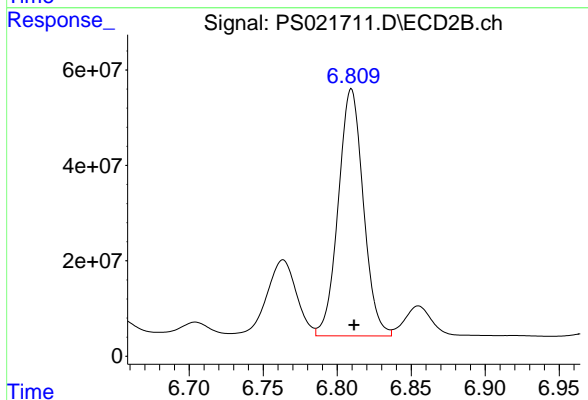
R.T.: 6.447 min  
 Delta R.T.: 0.018 min  
 Response: 28945709  
 Conc: 26.40 ng/ml



#4 2,4-DCAA

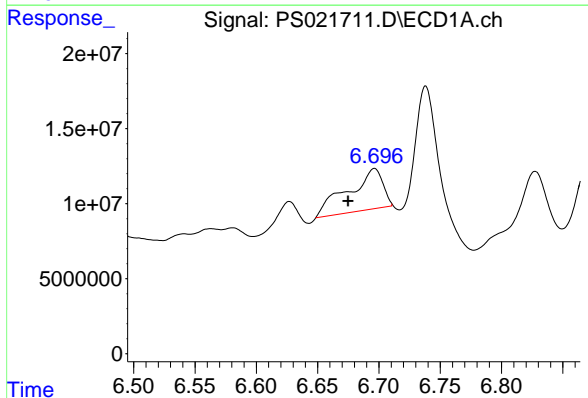
R.T.: 6.375 min  
 Delta R.T.: -0.003 min  
 Response: 951820109  
 Conc: 341.94 ng/ml

Instrument :  
 ECD\_S  
 ClientSampleId :



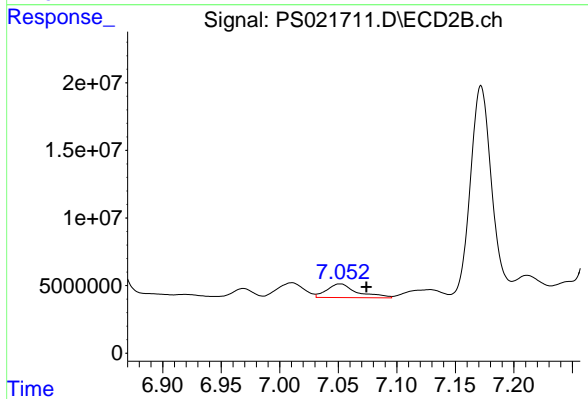
#4 2,4-DCAA

R.T.: 6.810 min  
 Delta R.T.: -0.002 min  
 Response: 610183695  
 Conc: 339.62 ng/ml



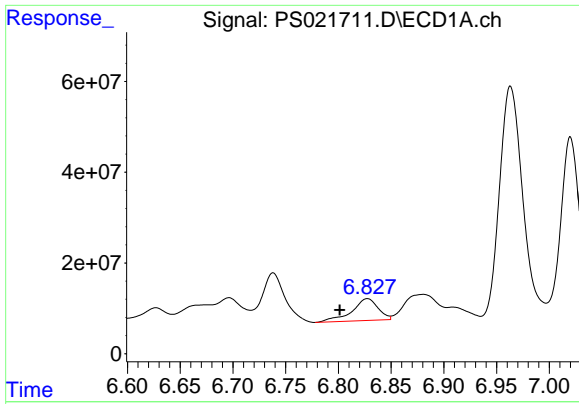
#6 MCPP

R.T.: 6.696 min  
 Delta R.T.: 0.021 min  
 Response: 55096405  
 Conc: 5.75 ug/ml



#6 MCPP

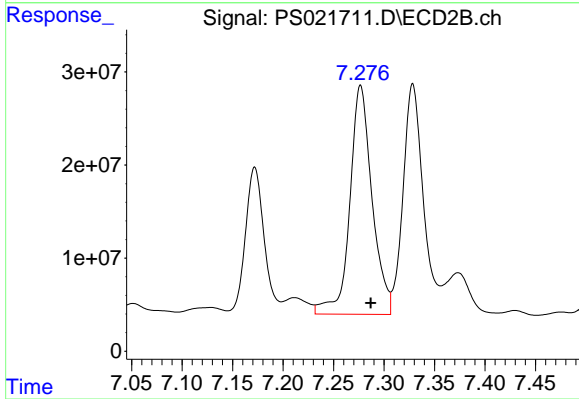
R.T.: 7.052 min  
 Delta R.T.: -0.022 min  
 Response: 18183001  
 Conc: 2.74 ug/ml



#7 MCPA

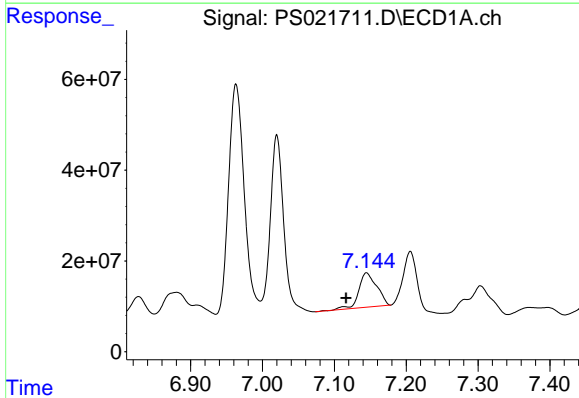
R.T.: 6.827 min  
 Delta R.T.: 0.026 min  
 Response: 83382527  
 Conc: 6.46 ug/ml

Instrument :  
 ECD\_S  
 ClientSampleId :



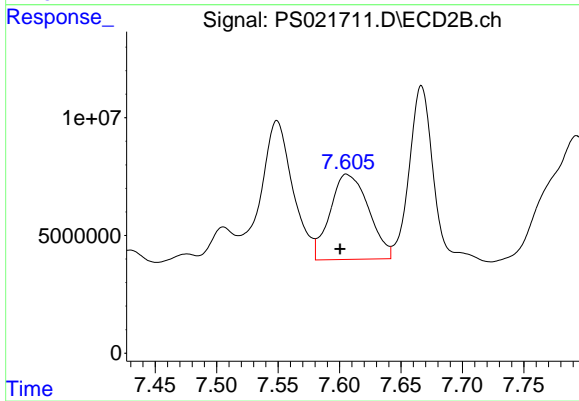
#7 MCPA

R.T.: 7.277 min  
 Delta R.T.: -0.010 min  
 Response: 377260659  
 Conc: 41.60 ug/ml



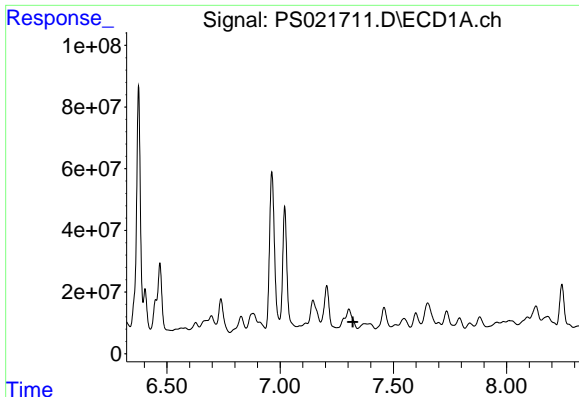
#8 DICHLORPROP

R.T.: 7.145 min  
 Delta R.T.: 0.029 min  
 Response: 131645477  
 Conc: 40.82 ng/ml



#8 DICHLORPROP

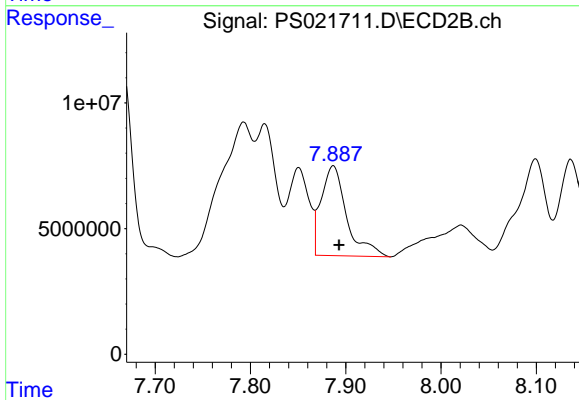
R.T.: 7.606 min  
 Delta R.T.: 0.005 min  
 Response: 79188725  
 Conc: 37.12 ng/ml



#9 2,4-D

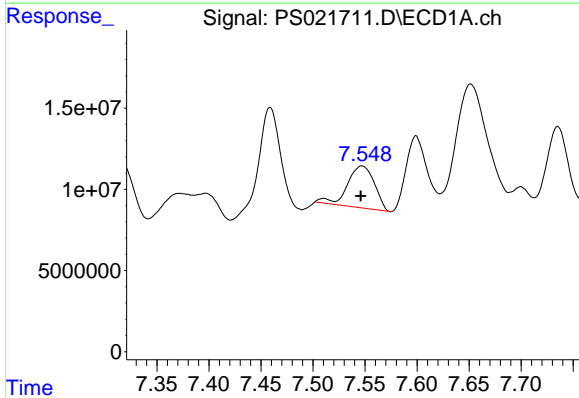
R.T.: 7.304 min  
 Delta R.T.: -0.017 min  
 Response: -42715485  
 Conc: N.D.

Instrument :  
 ECD\_S  
 ClientSampleId :



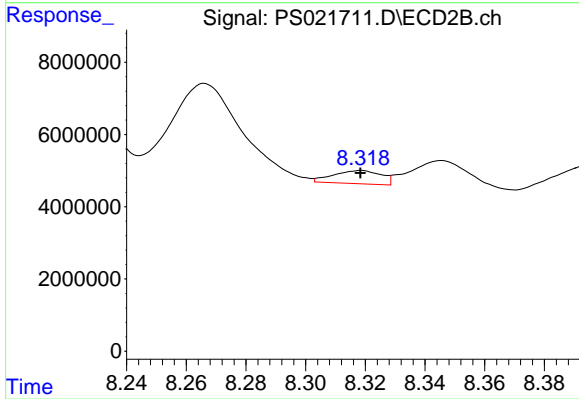
#9 2,4-D

R.T.: 7.887 min  
 Delta R.T.: -0.006 min  
 Response: 66610287  
 Conc: 26.36 ng/ml



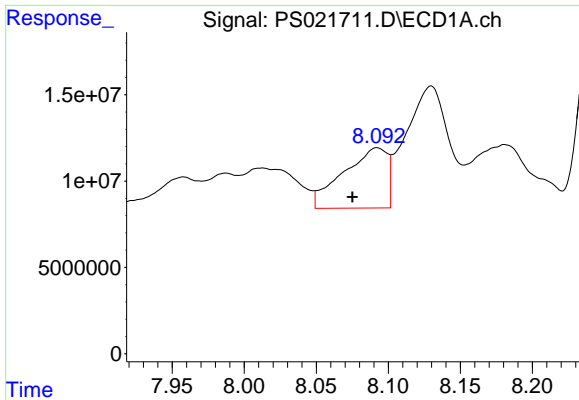
#10 Pentachlorophenol

R.T.: 7.547 min  
 Delta R.T.: 0.001 min  
 Response: 46385511  
 Conc: 1.11 ng/ml



#10 Pentachlorophenol

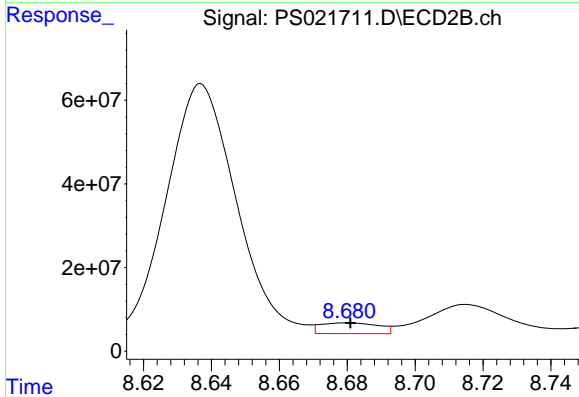
R.T.: 8.318 min  
 Delta R.T.: 0.000 min  
 Response: 4071598  
 Conc: N.D.



#11 2,4,5-TP (SILVEX)

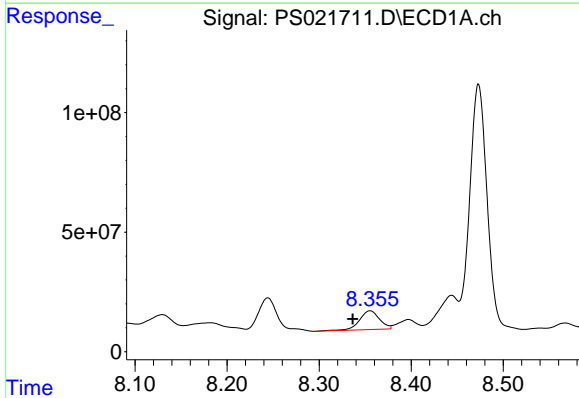
R.T.: 8.092 min  
 Delta R.T.: 0.017 min  
 Response: 74346968  
 Conc: 4.03 ng/ml

Instrument :  
 ECD\_S  
 ClientSampleId :



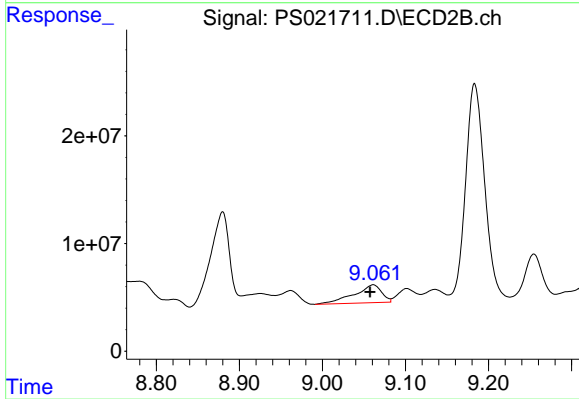
#11 2,4,5-TP (SILVEX)

R.T.: 8.680 min  
 Delta R.T.: 0.000 min  
 Response: 30243578  
 Conc: 2.54 ng/ml



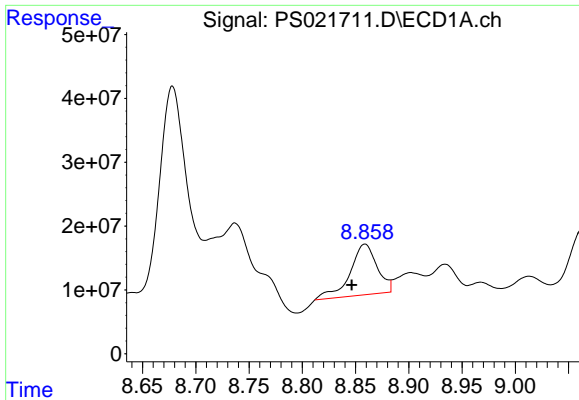
#12 2,4,5-T

R.T.: 8.355 min  
 Delta R.T.: 0.019 min  
 Response: 119797607  
 Conc: 6.21 ng/ml



#12 2,4,5-T

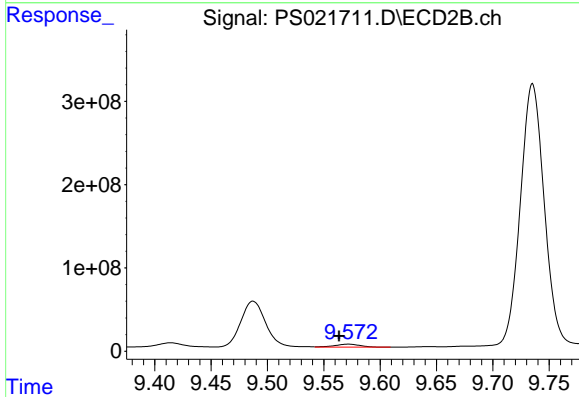
R.T.: 9.061 min  
 Delta R.T.: 0.004 min  
 Response: 38285526  
 Conc: 3.43 ng/ml



#13 2,4-DB

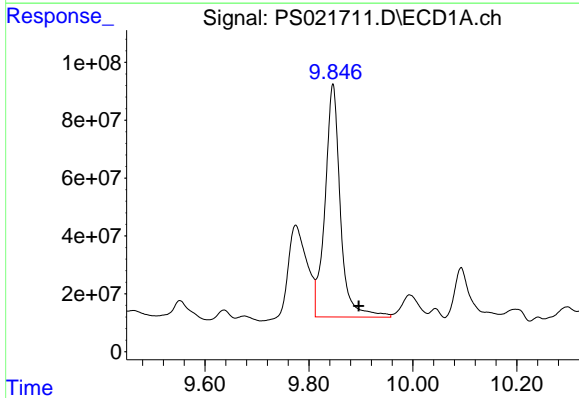
R.T.: 8.859 min  
 Delta R.T.: 0.012 min  
 Response: 141374490  
 Conc: 44.66 ng/ml

Instrument :  
 ECD\_S  
 ClientSampleId :



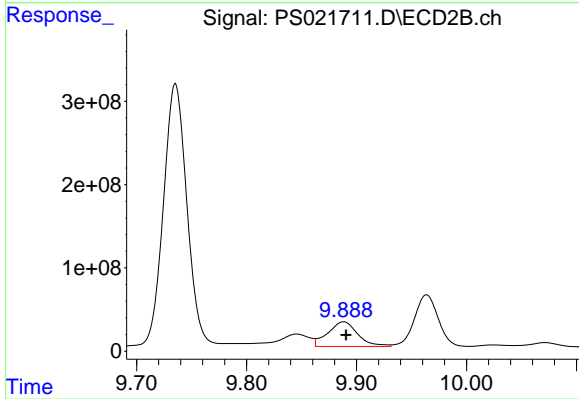
#13 2,4-DB

R.T.: 9.572 min  
 Delta R.T.: 0.008 min  
 Response: 54318829  
 Conc: 36.25 ng/ml



#14 DINOSEB

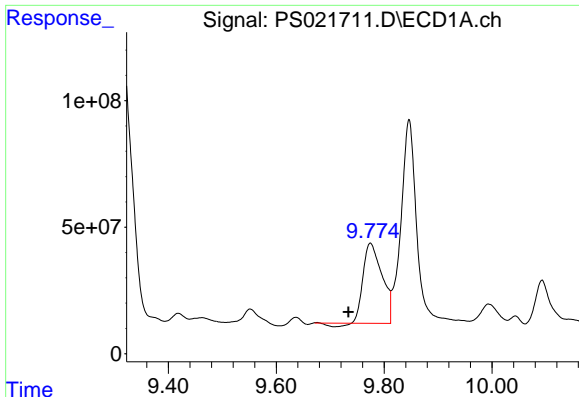
R.T.: 9.846 min  
 Delta R.T.: -0.050 min  
 Response: 1650681498  
 Conc: 100.57 ng/ml



#14 DINOSEB

R.T.: 9.888 min  
 Delta R.T.: -0.002 min  
 Response: 559204024  
 Conc: 67.29 ng/ml

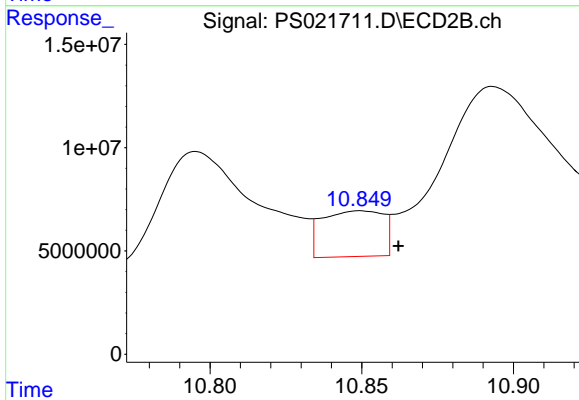




#15 Picloram

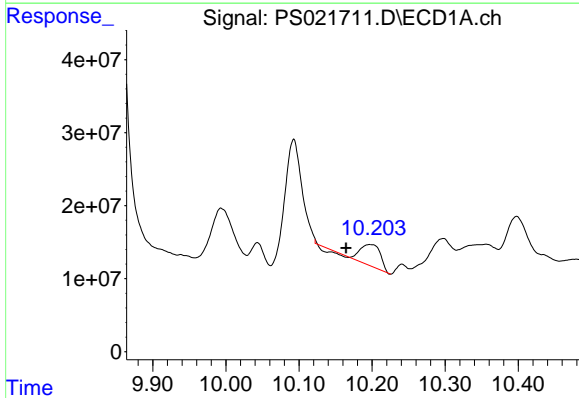
R.T.: 9.775 min  
 Delta R.T.: 0.041 min  
 Response: 753361371  
 Conc: 26.56 ng/ml

Instrument :  
 ECD\_S  
 ClientSampleId :



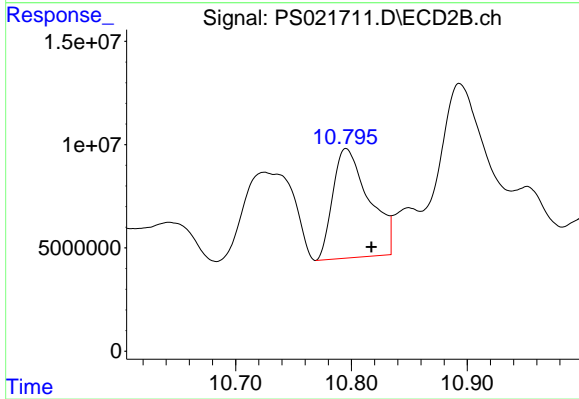
#15 Picloram

R.T.: 10.850 min  
 Delta R.T.: -0.012 min  
 Response: 31042580  
 Conc: 1.75 ng/ml



#16 DCPA

R.T.: 10.198 min  
 Delta R.T.: 0.033 min  
 Response: 59034721  
 Conc: 2.39 ng/ml



#16 DCPA

R.T.: 10.796 min  
 Delta R.T.: -0.022 min  
 Response: 115075828  
 Conc: 8.26 ng/ml