

Data Path : Z:\pestpcbsrv\HPCHEM1\ECD\_S\Data\PS011025\  
 Data File : PS028879.D  
 Signal(s) : Signal #1: ECD1A.ch Signal #2: ECD2B.ch  
 Acq On : 10 Jan 2025 12:07  
 Operator : AR\AJ  
 Sample : PB166009BL  
 Misc :  
 ALS Vial : 4 Sample Multiplier: 1

Instrument :  
 ECD\_S  
 ClientSampleId :

Integration File signal 1: autoint1.e  
 Integration File signal 2: autoint2.e  
 Quant Time: Jan 11 01:45:53 2025  
 Quant Method : Z:\pestpcbsrv\HPCHEM1\ECD\_S\Method\PS122324.M  
 Quant Title : 8080.M  
 QLast Update : Mon Dec 23 13:44:25 2024  
 Response via : Initial Calibration  
 Integrator: ChemStation

Volume Inj. : 1 µl  
 Signal #1 Phase : ZB-MR2 Signal #2 Phase: ZB-MR2  
 Signal #1 Info : 30M x 0.32mm x0.5 Signal #2 Info : 30M x 0.32mm x 0.25µm

Compound	RT#1	RT#2	Resp#1	Resp#2	ng/ml	ng/ml
-----						
System Monitoring Compounds						
4) S 2,4-DCAA	7.208	7.681	1252.3E6	492.5E6	553.619	437.549
Target Compounds						
1) T Dalapon	2.584f	2.629f	75500727	301.6E6	26.805	153.189 #
2) T 3,5-DICHL...	6.397	6.670	3475114	15868648	1.055	9.573 #
3) T 4-Nitroph...	6.993	0.000	14174893	0	9.437	N.D. #
5) T DICAMBA	0.000	7.872f	0	10769152	N.D.	1.962
6) T MCPP	7.553	7.975	7281410	4641389	1.169	1.420
7) T MCPA	7.724	0.000	7213247	0	<MDL	N.D. #
8) T DICHLORPROP	8.109	8.635	5069633	71776635	1.911	52.025 #
9) T 2,4-D	8.345	8.965f	18660614	2961816	6.549	2.052 #
10) T Pentachlo...	8.629	9.444	4582478	7839209	<MDL	<MDL #
11) T 2,4,5-TP ...	9.172f	9.852	927061	39206993	<MDL	4.364 #
12) T 2,4,5-T	9.497	10.302f	39188158	64682843	2.409	7.427 #
13) T 2,4-DB	10.065	10.832	393.2E6	-1231856	125.948	N.D. #
14) T DINOSEB	11.261	11.183	14817853	17110069	1.102	2.778 #
15) T Picloram	11.086	12.268	180.1E6	25022246	6.717	1.949 #
16) T DCPA	0.000	12.268	0	25022246	N.D.	2.329
-----						

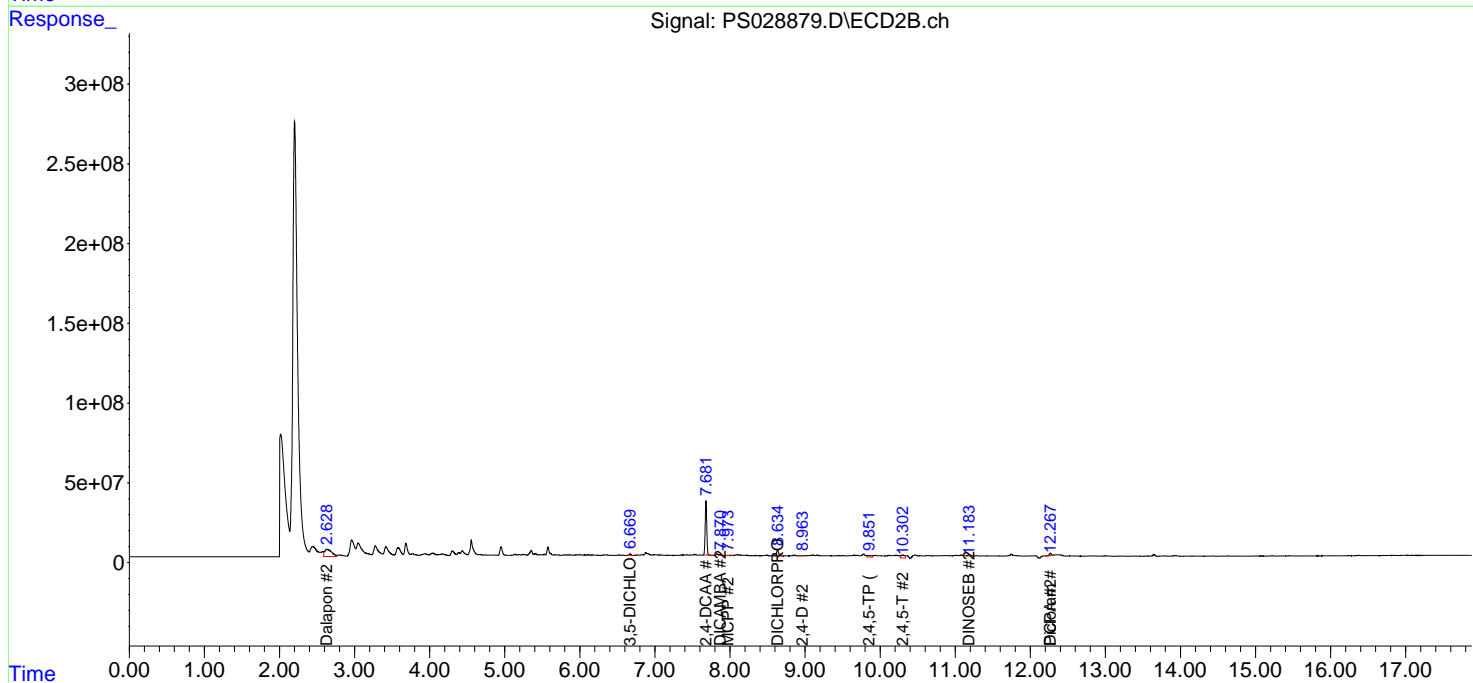
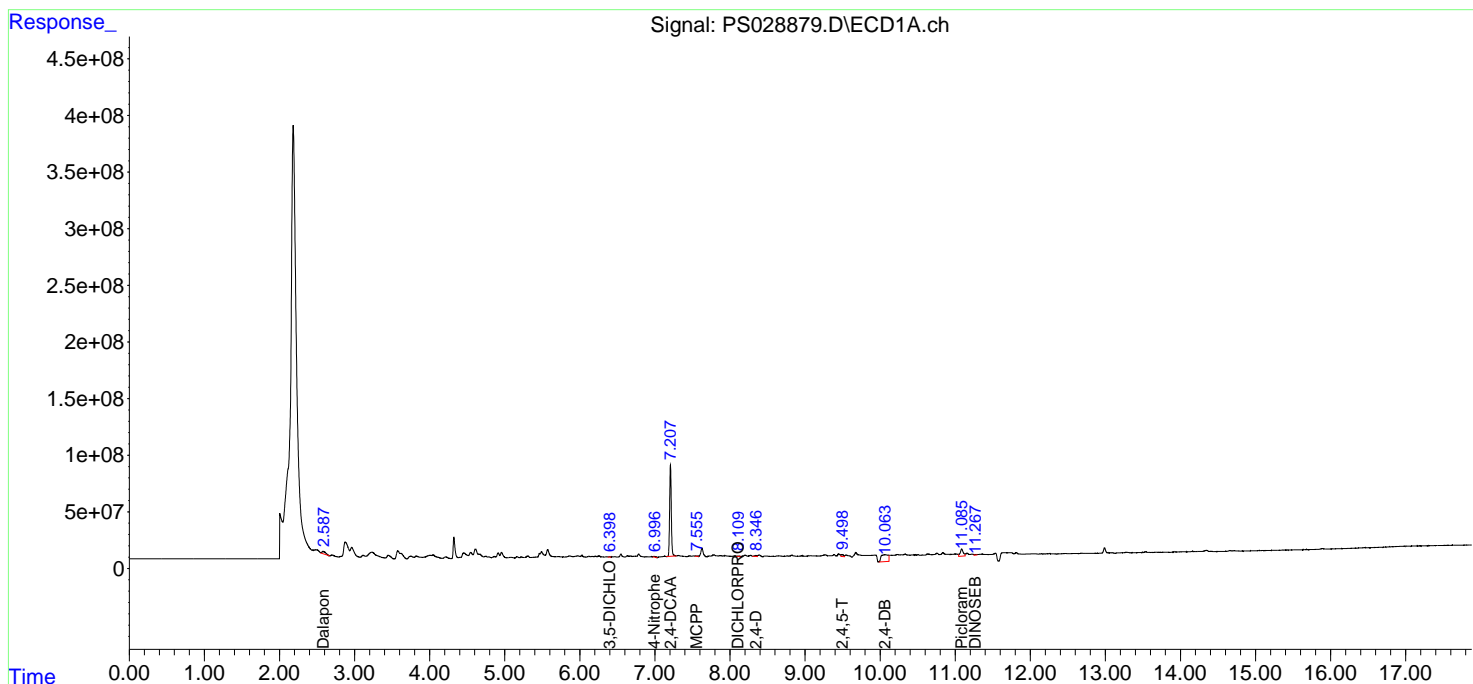
(f)=RT Delta > 1/2 Window (#)=Amounts differ by > 25% (m)=manual int.

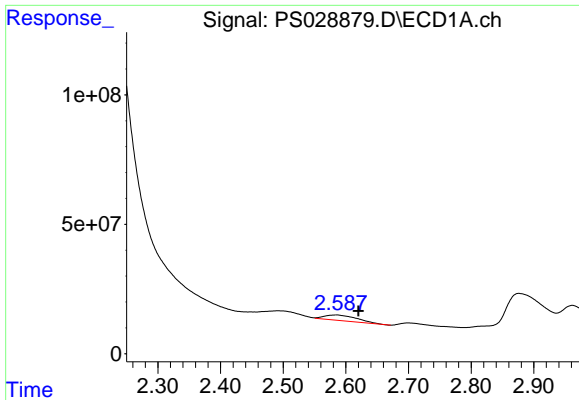
Data Path : Z:\pestpcbsrv\HPCHEM1\ECD\_S\Data\PS011025\  
 Data File : PS028879.D  
 Signal(s) : Signal #1: ECD1A.ch Signal #2: ECD2B.ch  
 Acq On : 10 Jan 2025 12:07  
 Operator : AR\AJ  
 Sample : PB166009BL  
 Misc :  
 ALS Vial : 4 Sample Multiplier: 1

Instrument :  
 ECD\_S  
 ClientSampleId :

Integration File signal 1: autoint1.e  
 Integration File signal 2: autoint2.e  
 Quant Time: Jan 11 01:45:53 2025  
 Quant Method : Z:\pestpcbsrv\HPCHEM1\ECD\_S\Method\PS122324.M  
 Quant Title : 8080.M  
 QLast Update : Mon Dec 23 13:44:25 2024  
 Response via : Initial Calibration  
 Integrator: ChemStation

Volume Inj. : 1 µl  
 Signal #1 Phase : ZB-MR1 Signal #2 Phase: ZB-MR2  
 Signal #1 Info : 30M x 0.32mm x0.5 Signal #2 Info : 30M x 0.32mm x 0.25µm

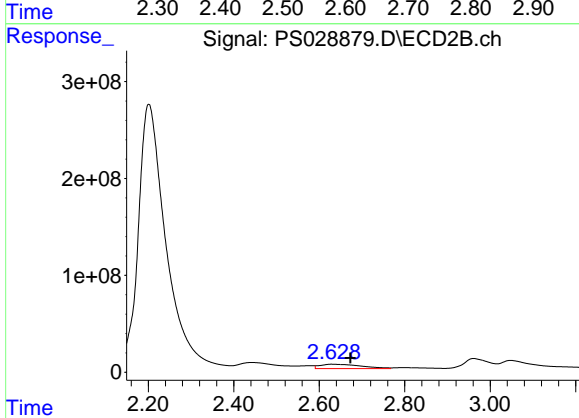




#1 Dalapon

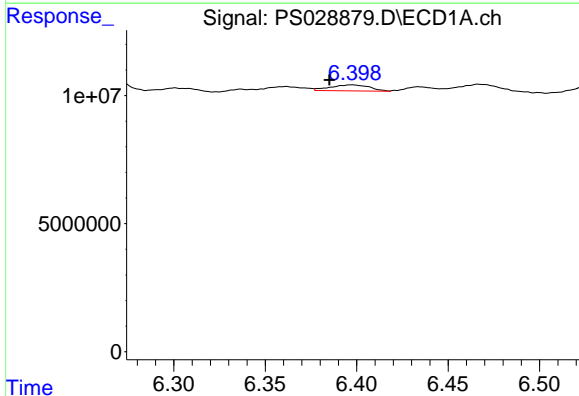
R.T.: 2.584 min  
 Delta R.T.: -0.036 min  
 Response: 75500727  
 Conc: 26.81 ng/ml

Instrument :  
 ECD\_S  
 ClientSampleId :



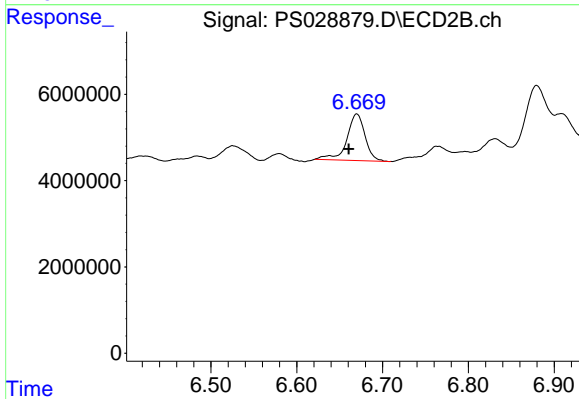
#1 Dalapon

R.T.: 2.629 min  
 Delta R.T.: -0.043 min  
 Response: 301568678  
 Conc: 153.19 ng/ml



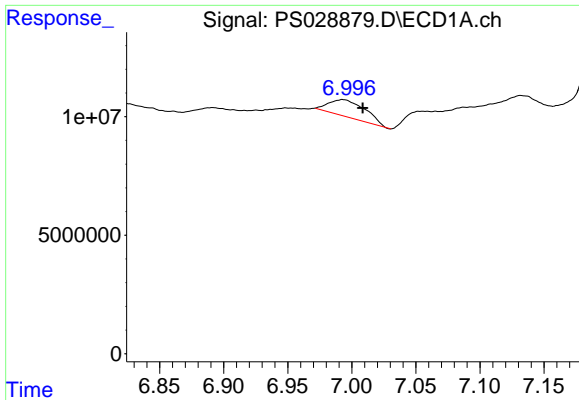
#2 3,5-DICHLOROBENZOIC ACID

R.T.: 6.397 min  
 Delta R.T.: 0.012 min  
 Response: 3475114  
 Conc: 1.05 ng/ml



#2 3,5-DICHLOROBENZOIC ACID

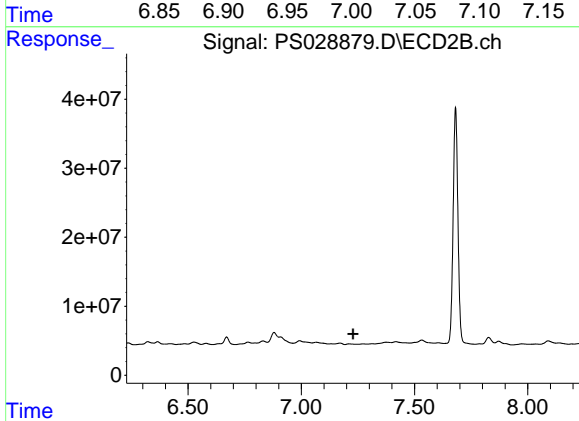
R.T.: 6.670 min  
 Delta R.T.: 0.009 min  
 Response: 15868648  
 Conc: 9.57 ng/ml



#3 4-Nitrophenol

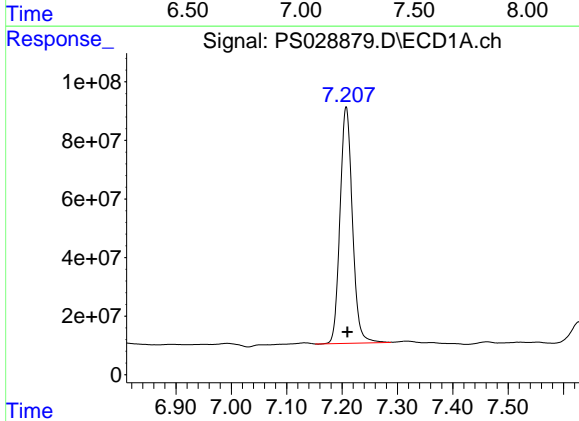
R.T.: 6.993 min  
 Delta R.T.: -0.016 min  
 Response: 14174893  
 Conc: 9.44 ng/ml

Instrument :  
 ECD\_S  
 ClientSampleId :



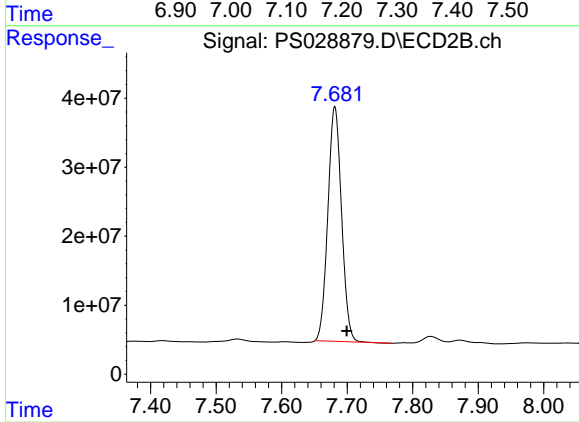
#3 4-Nitrophenol

R.T.: 0.000 min  
 Exp R.T. : 7.228 min  
 Response: 0  
 Conc: N.D.



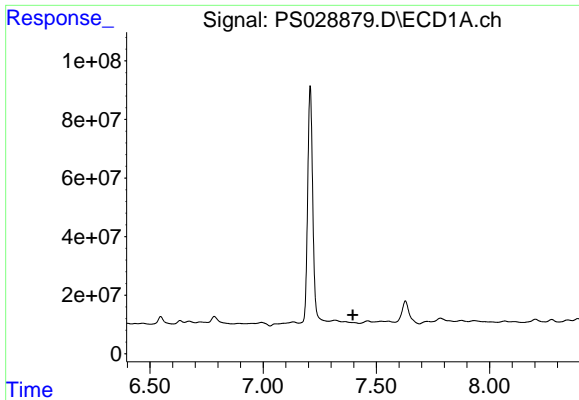
#4 2,4-DCAA

R.T.: 7.208 min  
 Delta R.T.: -0.002 min  
 Response: 1252299459  
 Conc: 553.62 ng/ml



#4 2,4-DCAA

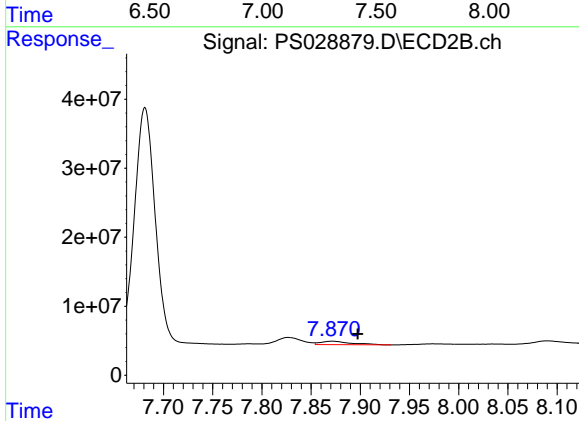
R.T.: 7.681 min  
 Delta R.T.: -0.018 min  
 Response: 492477542  
 Conc: 437.55 ng/ml



#5 DICAMBA

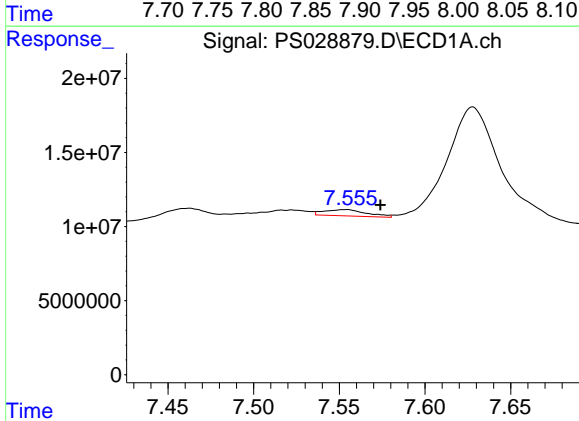
R.T.: 0.000 min  
 Exp R.T.: 7.396 min  
 Response: 0  
 Conc: N.D.

Instrument :  
 ECD\_S  
 ClientSampleId :



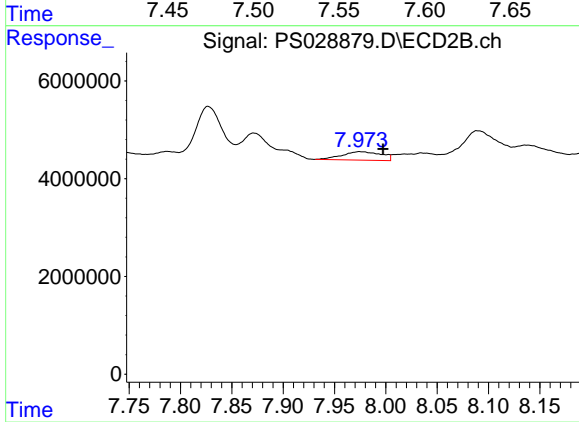
#5 DICAMBA

R.T.: 7.872 min  
 Delta R.T.: -0.026 min  
 Response: 10769152  
 Conc: 1.96 ng/ml



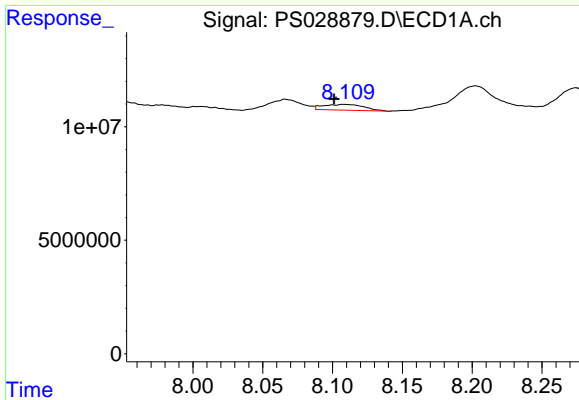
#6 MCPP

R.T.: 7.553 min  
 Delta R.T.: -0.021 min  
 Response: 7281410  
 Conc: 1.17 ug/ml



#6 MCPP

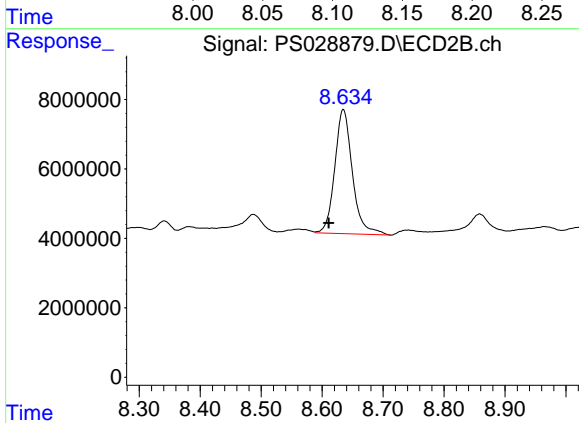
R.T.: 7.975 min  
 Delta R.T.: -0.022 min  
 Response: 4641389  
 Conc: 1.42 ug/ml



#8 DICHLORPROP

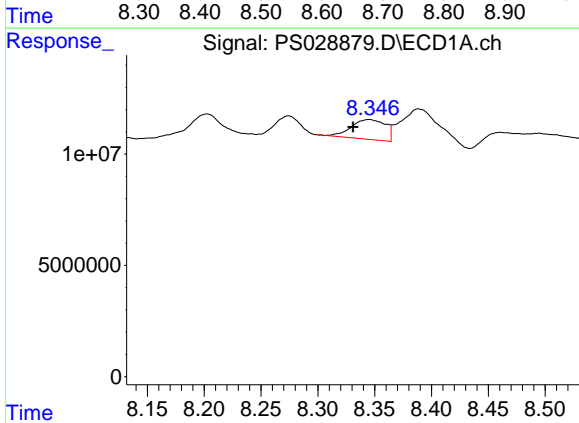
R.T.: 8.109 min  
 Delta R.T.: 0.008 min  
 Response: 5069633  
 Conc: 1.91 ng/ml

Instrument :  
 ECD\_S  
 ClientSampleId :



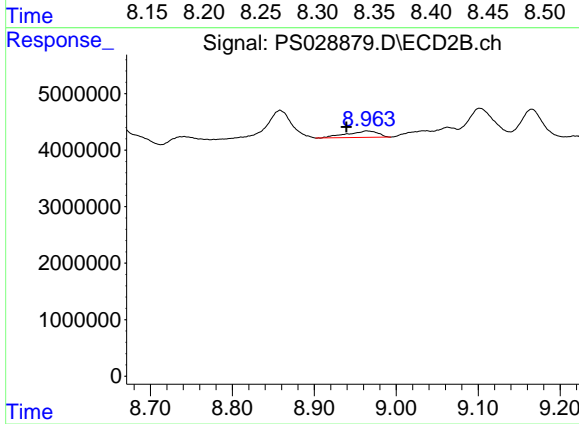
#8 DICHLORPROP

R.T.: 8.635 min  
 Delta R.T.: 0.024 min  
 Response: 71776635  
 Conc: 52.02 ng/ml



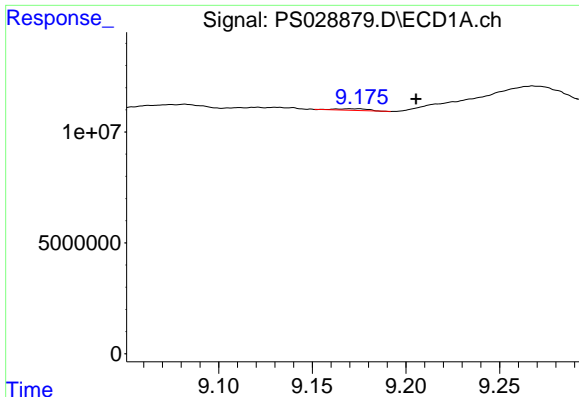
#9 2,4-D

R.T.: 8.345 min  
 Delta R.T.: 0.014 min  
 Response: 18660614  
 Conc: 6.55 ng/ml



#9 2,4-D

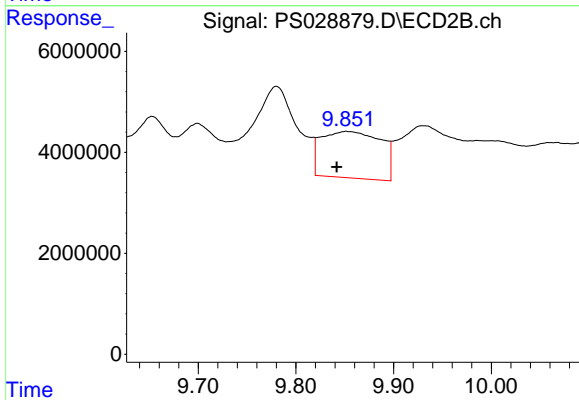
R.T.: 8.965 min  
 Delta R.T.: 0.026 min  
 Response: 2961816  
 Conc: 2.05 ng/ml



#11 2,4,5-TP (SILVEX)

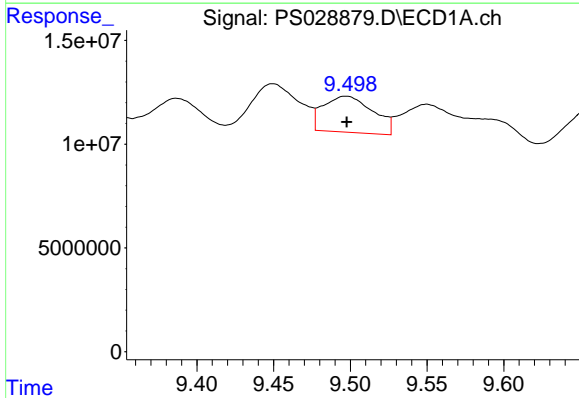
R.T.: 9.172 min  
 Delta R.T.: -0.033 min  
 Response: 927061  
 Conc: N.D.

Instrument :  
 ECD\_S  
 ClientSampleId :



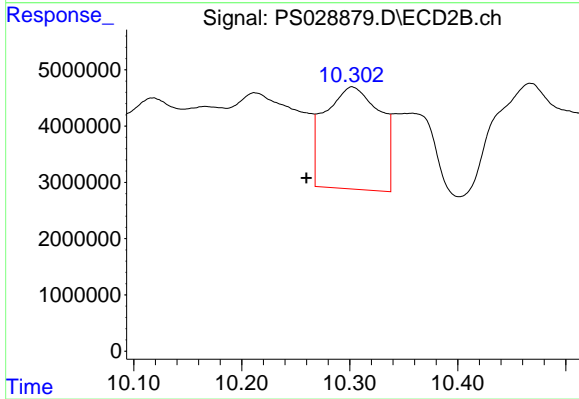
#11 2,4,5-TP (SILVEX)

R.T.: 9.852 min  
 Delta R.T.: 0.011 min  
 Response: 39206993  
 Conc: 4.36 ng/ml



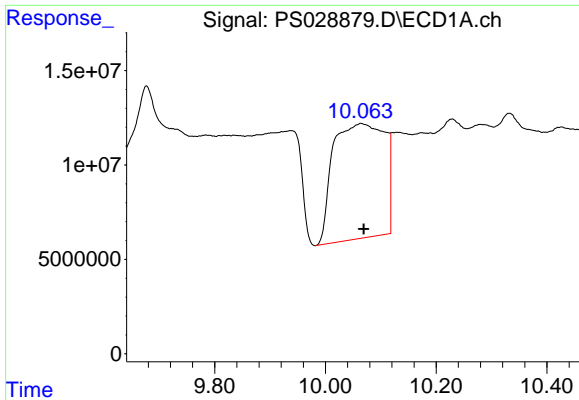
#12 2,4,5-T

R.T.: 9.497 min  
 Delta R.T.: 0.000 min  
 Response: 39188158  
 Conc: 2.41 ng/ml



#12 2,4,5-T

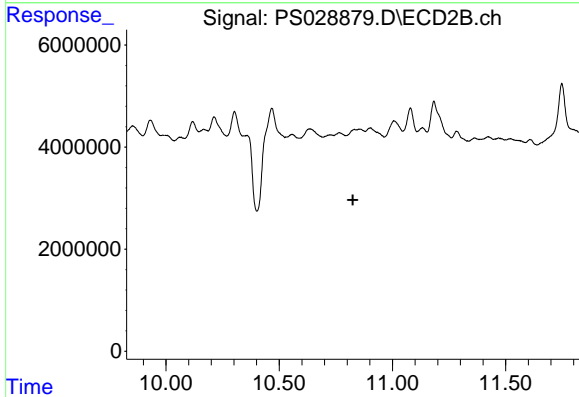
R.T.: 10.302 min  
 Delta R.T.: 0.042 min  
 Response: 64682843  
 Conc: 7.43 ng/ml



#13 2,4-DB

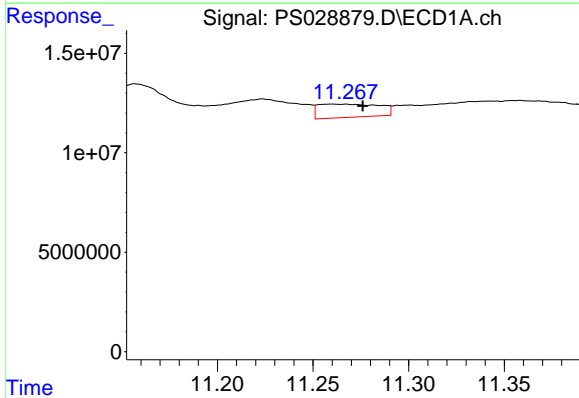
R.T.: 10.065 min  
 Delta R.T.: -0.005 min  
 Response: 393159690  
 Conc: 125.95 ng/ml

Instrument :  
 ECD\_S  
 ClientSampleId :



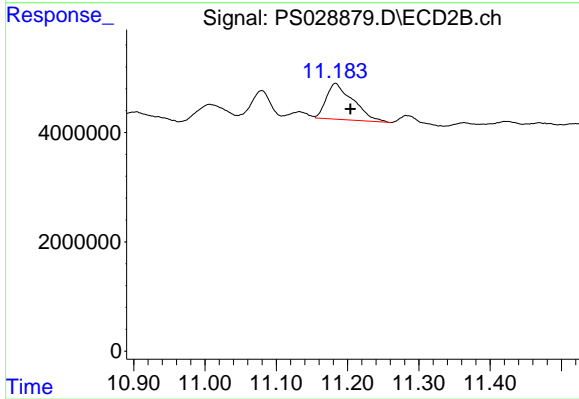
#13 2,4-DB

R.T.: 10.832 min  
 Delta R.T.: 0.006 min  
 Response: -1231856  
 Conc: N.D.



#14 DINOSEB

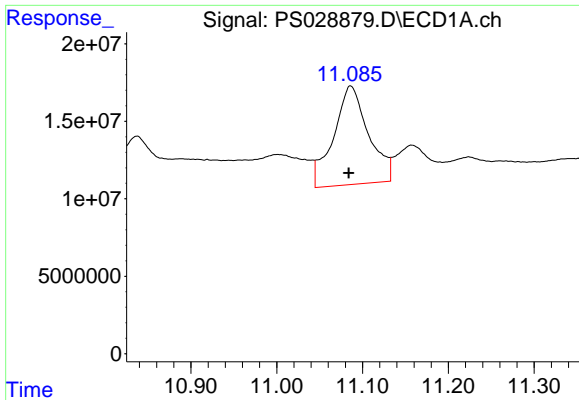
R.T.: 11.261 min  
 Delta R.T.: -0.015 min  
 Response: 14817853  
 Conc: 1.10 ng/ml



#14 DINOSEB

R.T.: 11.183 min  
 Delta R.T.: -0.021 min  
 Response: 17110069  
 Conc: 2.78 ng/ml

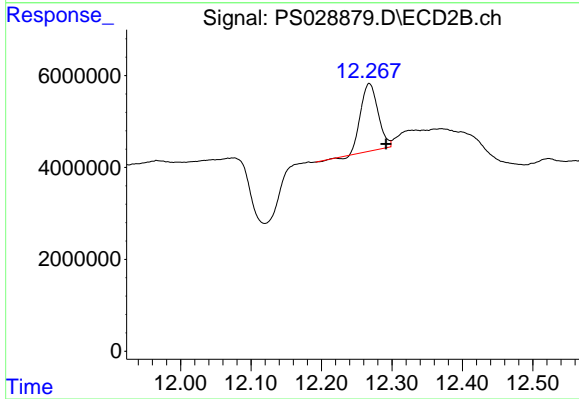




#15 Picloram

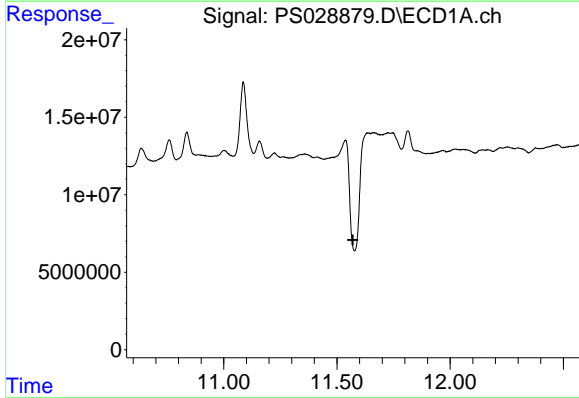
R.T.: 11.086 min  
 Delta R.T.: 0.002 min  
 Response: 180112333  
 Conc: 6.72 ng/ml

Instrument :  
 ECD\_S  
 ClientSampleId :



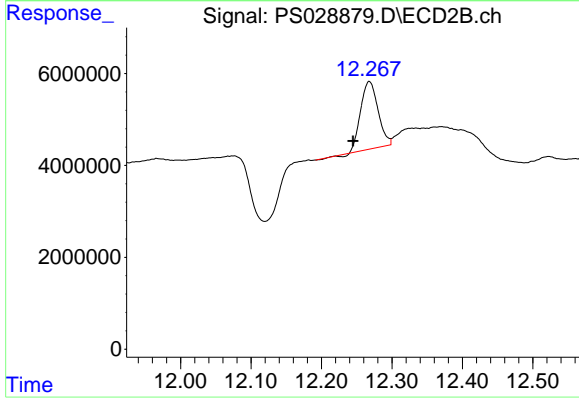
#15 Picloram

R.T.: 12.268 min  
 Delta R.T.: -0.024 min  
 Response: 25022246  
 Conc: 1.95 ng/ml



#16 DCPA

R.T.: 0.000 min  
 Exp R.T. : 11.570 min  
 Response: 0  
 Conc: N.D.



#16 DCPA

R.T.: 12.268 min  
 Delta R.T.: 0.023 min  
 Response: 25022246  
 Conc: 2.33 ng/ml