

Data Path : Z:\pestpcbsrv\HPCHEM1\ECD_S\Data\PS011421\
 Data File : PS013761.D
 Signal(s) : Signal #1: ECD1A.ch Signal #2: ECD2B.ch
 Acq On : 14 Jan 2021 16:49
 Operator : DD\AJ
 Sample : I.BLK
 Misc :
 ALS Vial : 2 Sample Multiplier: 1

Instrument :
 ECD_S
 ClientSampleId :

Integration File signal 1: autoint1.e
 Integration File signal 2: autoint2.e
 Quant Time: Jan 15 00:27:36 2021
 Quant Method : Z:\pestpcbsrv\HPCHEM1\ECD_S\Method\PS010421.M
 Quant Title : 8080.M
 QLast Update : Tue Jan 05 01:51:07 2021
 Response via : Initial Calibration
 Integrator: ChemStation

Volume Inj. : 2 µl
 Signal #1 Phase : Rtx-CLPesticides Signal #2 Phase: Rtx-CLPesticides2
 Signal #1 Info : 30M x 0.32mm x0.5 Signal #2 Info : 30M x 0.32mm x 0.25µm

Compound	RT#1	RT#2	Resp#1	Resp#2	ng/ml	ng/ml

System Monitoring Compounds						
4) S 2,4-DCAA	7.209	6.911	434.5E6	206.2E6	454.679	512.675

Target Compounds

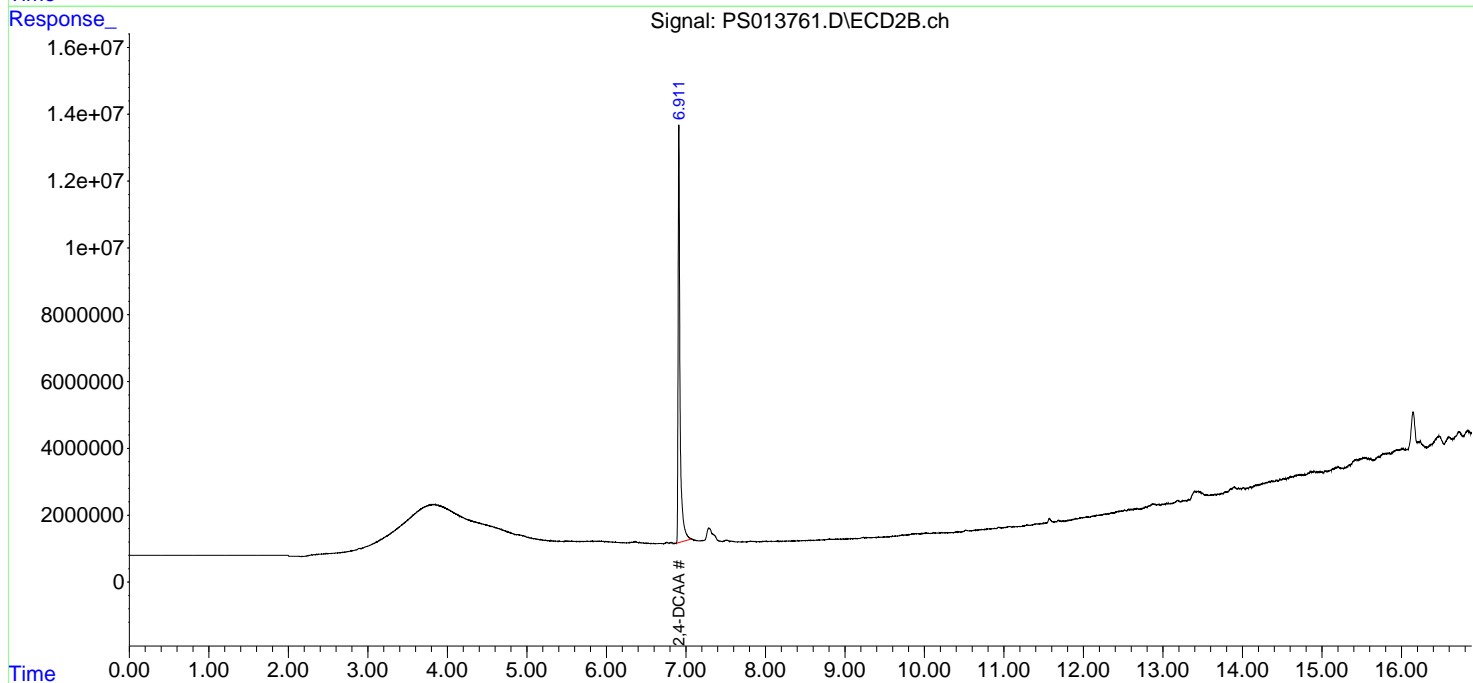
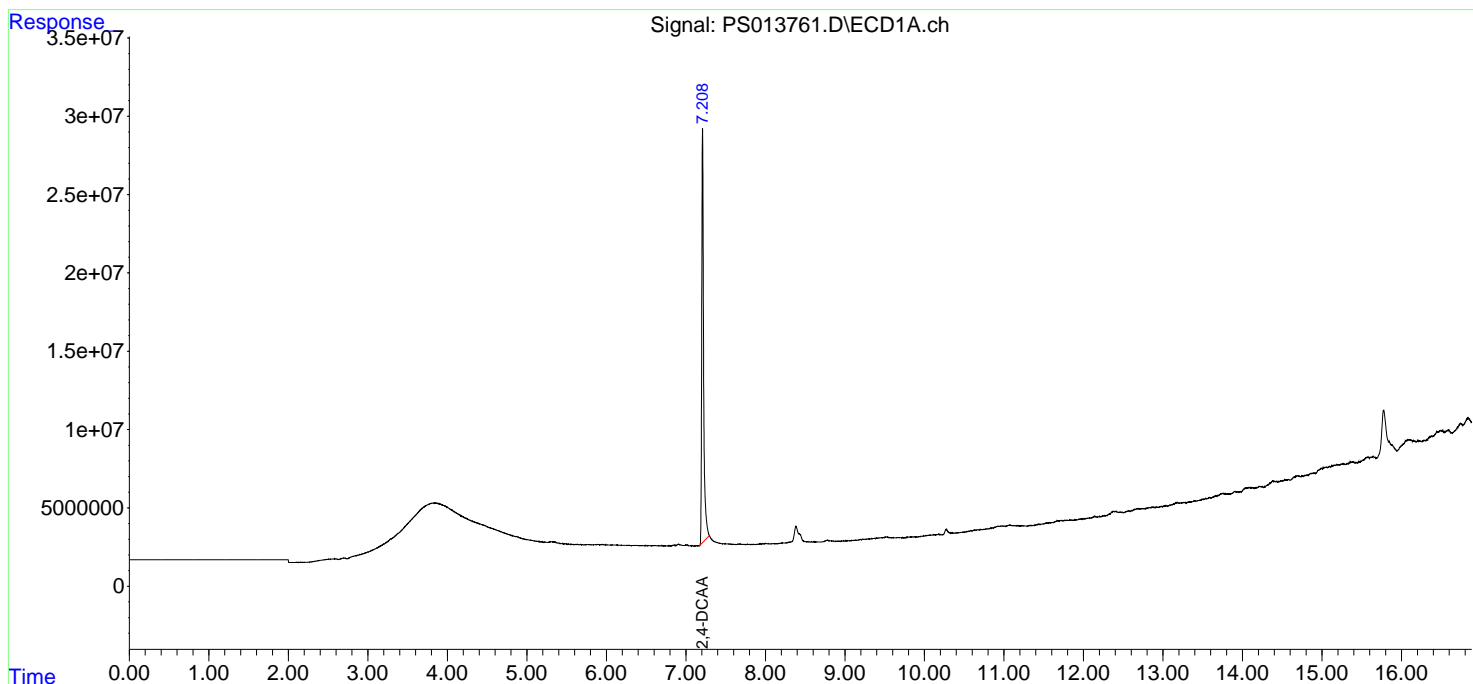
(f)=RT Delta > 1/2 Window (#)=Amounts differ by > 25% (m)=manual int.

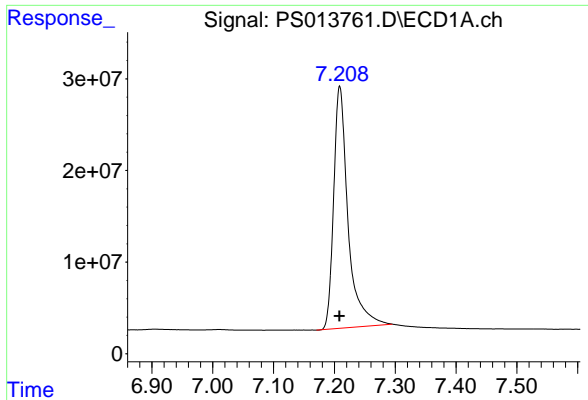
Data Path : Z:\pestpcbsrv\HPCHEM1\ECD_S\Data\PS011421\
 Data File : PS013761.D
 Signal(s) : Signal #1: ECD1A.ch Signal #2: ECD2B.ch
 Acq On : 14 Jan 2021 16:49
 Operator : DD\AJ
 Sample : I.BLK
 Misc :
 ALS Vial : 2 Sample Multiplier: 1

Instrument :
 ECD_S
 ClientSampled :

Integration File signal 1: autoint1.e
 Integration File signal 2: autoint2.e
 Quant Time: Jan 15 00:27:36 2021
 Quant Method : Z:\pestpcbsrv\HPCHEM1\ECD_S\Method\PS010421.M
 Quant Title : 8080.M
 QLast Update : Tue Jan 05 01:51:07 2021
 Response via : Initial Calibration
 Integrator: ChemStation

Volume Inj. : 2 µl
 Signal #1 Phase : Rtx-CLPesticides Signal #2 Phase: Rtx-CLPesticides2
 Signal #1 Info : 30M x 0.32mm x 0.5 Signal #2 Info : 30M x 0.32mm x 0.25µm

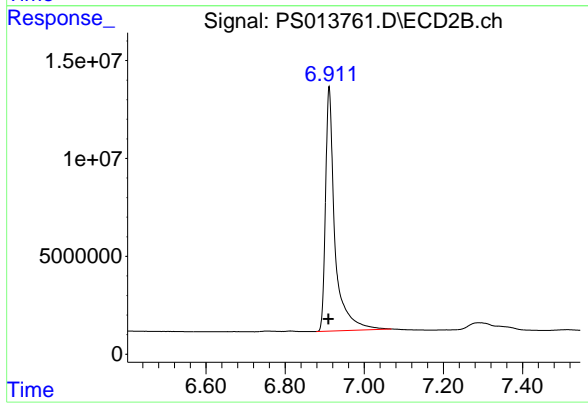




#4 2,4-DCAA

R.T.: 7.209 min
Delta R.T.: 0.000 min
Response: 434488253
Conc: 454.68 ng/ml

Instrument :
ECD_S
ClientSampleId :



#4 2,4-DCAA

R.T.: 6.911 min
Delta R.T.: 0.002 min
Response: 206154382
Conc: 512.68 ng/ml