

Data Path : Z:\pestpcbsrv\HPCHEM1\ECD_S\Data\PS011623\
 Data File : PS021769.D
 Signal(s) : Signal #1: ECD1A.ch Signal #2: ECD2B.ch
 Acq On : 16 Jan 2023 12:43
 Operator : AR\AJ
 Sample : 01132-02MSD
 Misc :
 ALS Vial : 8 Sample Multiplier: 1

Instrument :
 ECD_S
 ClientSampleId :

Integration File signal 1: autoint1.e
 Integration File signal 2: autoint2.e
 Quant Time: Jan 17 02:35:00 2023
 Quant Method : Z:\pestpcbsrv\HPCHEM1\ECD_S\Method\PS010923.M
 Quant Title : 8080.M
 QLast Update : Tue Jan 10 10:34:52 2023
 Response via : Initial Calibration
 Integrator: ChemStation

Volume Inj. : 2 µl
 Signal #1 Phase : Rtx-CLPesticides Signal #2 Phase: Rtx-CLPesticides2
 Signal #1 Info : 30M x 0.32mm x0.5 Signal #2 Info : 30M x 0.32mm x 0.25µm

	Compound	RT#1	RT#2	Resp#1	Resp#2	ng/ml	ng/ml

System Monitoring Compounds							
4) S	2,4-DCAA	6.374	6.808	1724.2E6	1128.9E6	619.415	628.349
Target Compounds							
1) T	Dalapon	2.485	2.560	831.2E6	1237.1E6	293.840	480.567 #
2) T	3,5-DICHL...	5.746	5.990	2131.6E6	1427.6E6	551.057	518.031
3) T	4-Nitroph...	6.221	6.429	32252223	22431587	22.127	20.463
5) T	DICAMBA	6.516	6.973	5440.7E6	3794.1E6	444.966	446.225
6) T	MCPD	6.672	7.070	500.9E6	341.7E6	52.277	51.534
7) T	MCPA	6.796	7.281	674.5E6	560.0E6	52.217	61.743
8) T	DICHLORPROP	7.113	7.596	1741.0E6	1098.7E6	539.785	514.968
9) T	2,4-D	7.314	7.887	1957.1E6	1386.5E6	503.916	548.772
10) T	Pentachlo...	7.544	8.316	23407.6E6	15011.4E6	561.951	523.072
11) T	2,4,5-TP ...	8.072	8.678	9922.4E6	6185.8E6	538.500	520.233
12) T	2,4,5-T	8.336	9.055	9602.3E6	5763.9E6	498.154	516.020
13) T	2,4-DB	8.842	9.562	1610.5E6	925.2E6	508.769	617.505
14) T	DINOSEB	9.895	9.888	7540.1E6	4959.6E6	459.380	596.764 #
15) T	Picloram	9.730	10.859	13930.1E6	8052.8E6	491.058	454.743
16) T	DCPA	10.162	10.816	13094.4E6	7118.3E6	530.054	510.649

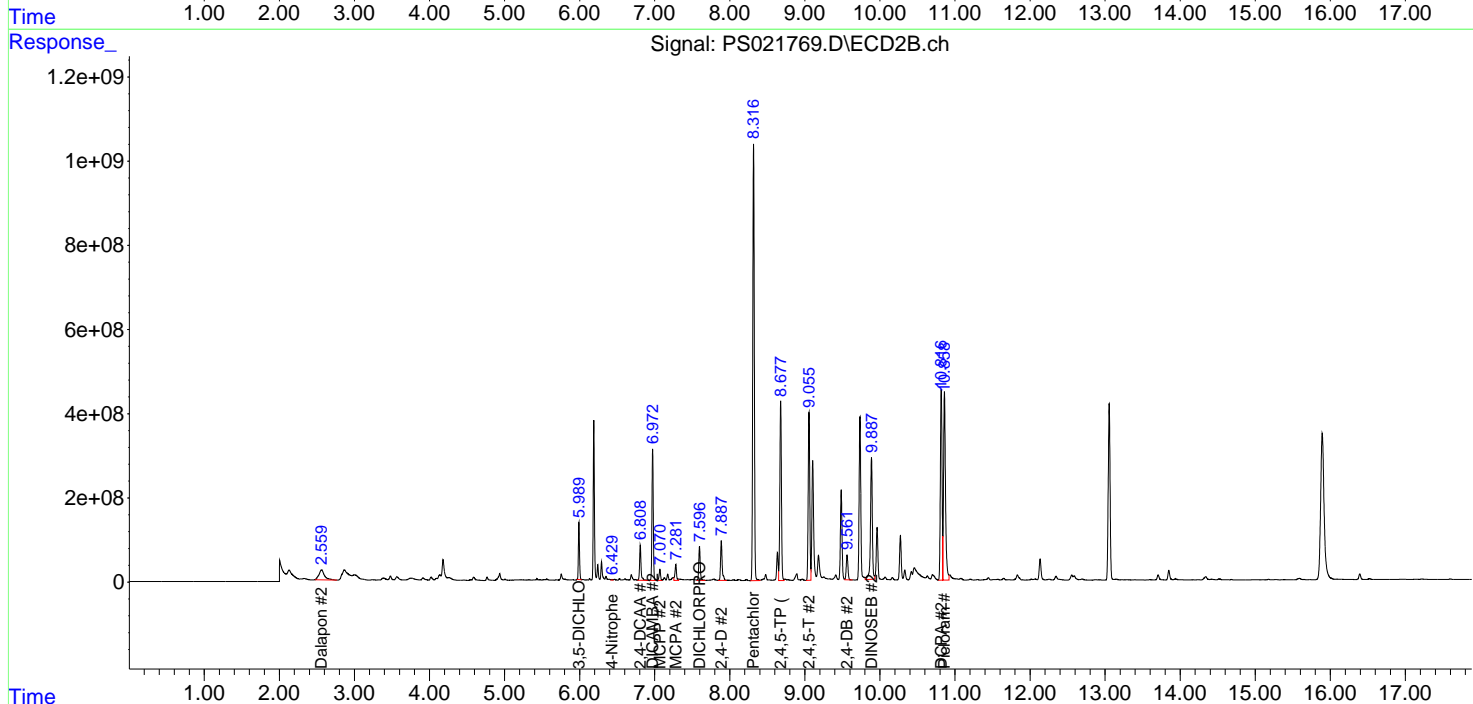
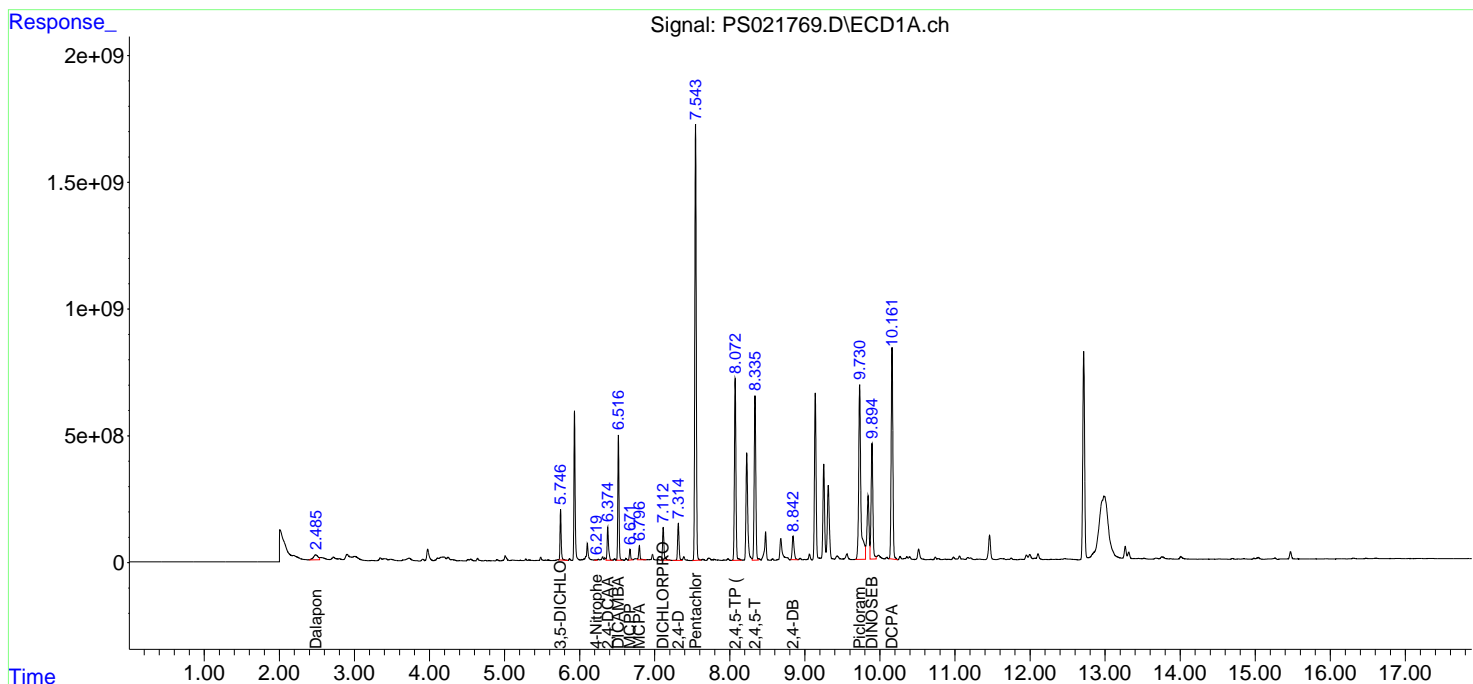
(f)=RT Delta > 1/2 Window (#)=Amounts differ by > 25% (m)=manual int.

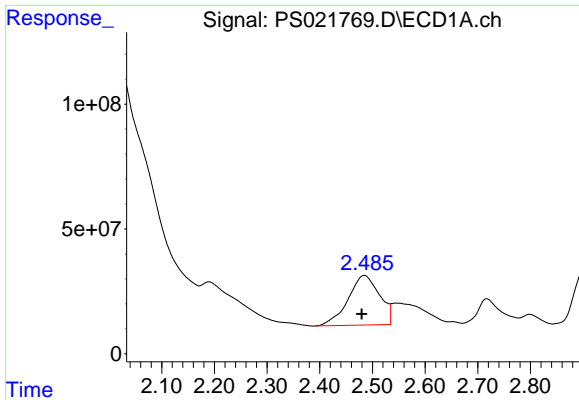
Data Path : Z:\pestpcbsrv\HPCHEM1\ECD_S\Data\PS011623\
 Data File : PS021769.D
 Signal(s) : Signal #1: ECD1A.ch Signal #2: ECD2B.ch
 Acq On : 16 Jan 2023 12:43
 Operator : AR\AJ
 Sample : 01132-02MSD
 Misc :
 ALS Vial : 8 Sample Multiplier: 1

Instrument :
 ECD_S
 ClientSampleId :

Integration File signal 1: autoint1.e
 Integration File signal 2: autoint2.e
 Quant Time: Jan 17 02:35:00 2023
 Quant Method : Z:\pestpcbsrv\HPCHEM1\ECD_S\Method\PS010923.M
 Quant Title : 8080.M
 QLast Update : Tue Jan 10 10:34:52 2023
 Response via : Initial Calibration
 Integrator: ChemStation

Volume Inj. : 2 µl
 Signal #1 Phase : Rtx-CLPesticides Signal #2 Phase: Rtx-CLPesticides2
 Signal #1 Info : 30M x 0.32mm x0.5 Signal #2 Info : 30M x 0.32mm x 0.25µm

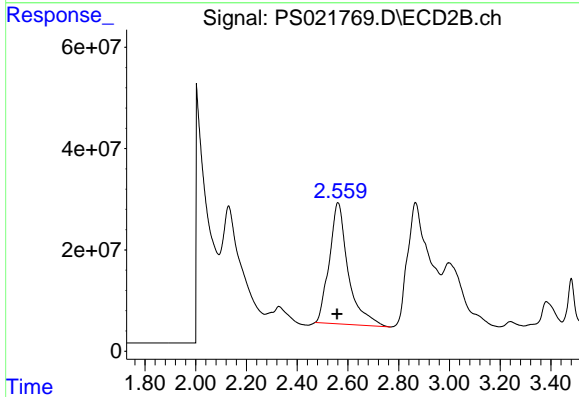




#1 Dalapon

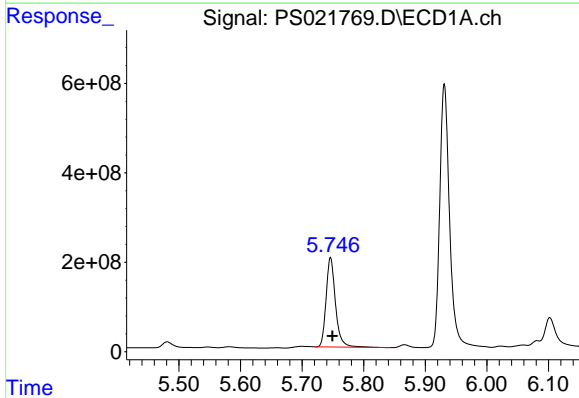
R.T.: 2.485 min
 Delta R.T.: 0.005 min
 Response: 831243402
 Conc: 293.84 ng/ml

Instrument :
 ECD_S
 ClientSampleId :



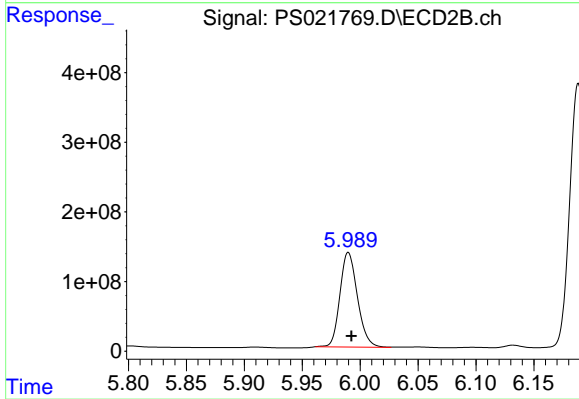
#1 Dalapon

R.T.: 2.560 min
 Delta R.T.: 0.003 min
 Response: 1237115906
 Conc: 480.57 ng/ml



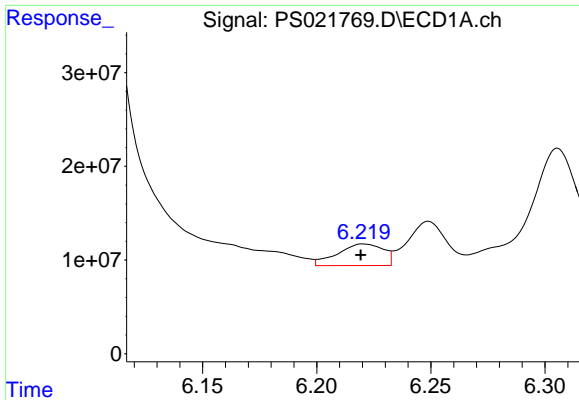
#2 3,5-DICHLOROBENZOIC ACID

R.T.: 5.746 min
 Delta R.T.: -0.003 min
 Response: 2131642119
 Conc: 551.06 ng/ml



#2 3,5-DICHLOROBENZOIC ACID

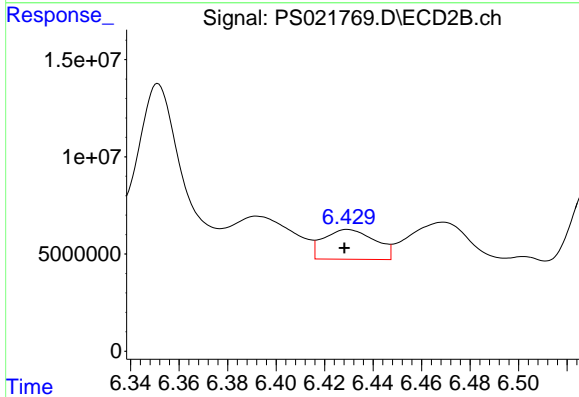
R.T.: 5.990 min
 Delta R.T.: -0.003 min
 Response: 1427612117
 Conc: 518.03 ng/ml



#3 4-Nitrophenol

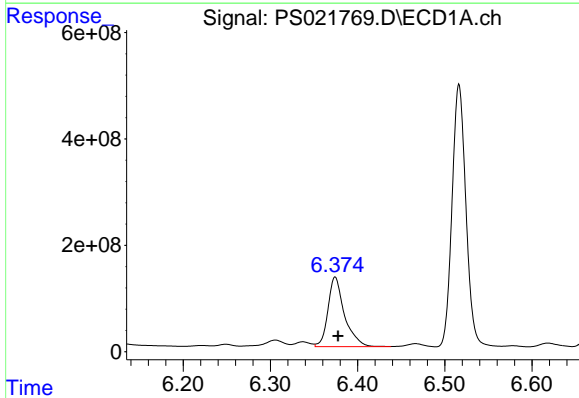
R.T.: 6.221 min
 Delta R.T.: 0.002 min
 Response: 32252223
 Conc: 22.13 ng/ml

Instrument :
 ECD_S
 ClientSampleId :



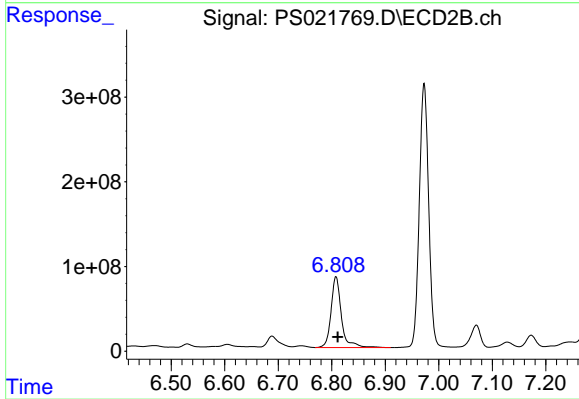
#3 4-Nitrophenol

R.T.: 6.429 min
 Delta R.T.: 0.001 min
 Response: 22431587
 Conc: 20.46 ng/ml



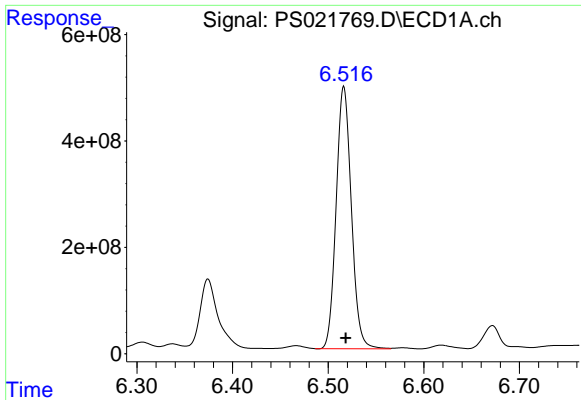
#4 2,4-DCAA

R.T.: 6.374 min
 Delta R.T.: -0.003 min
 Response: 1724182917
 Conc: 619.42 ng/ml



#4 2,4-DCAA

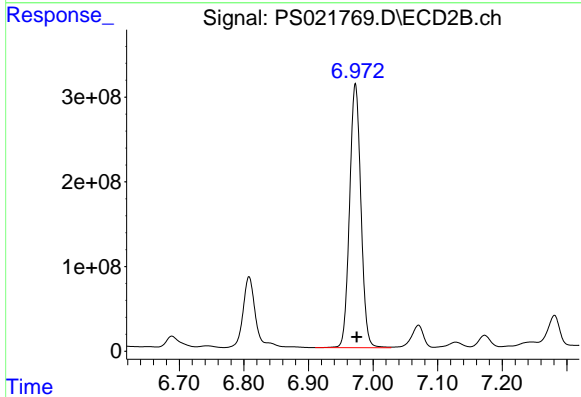
R.T.: 6.808 min
 Delta R.T.: -0.003 min
 Response: 1128948086
 Conc: 628.35 ng/ml



#5 DICAMBA

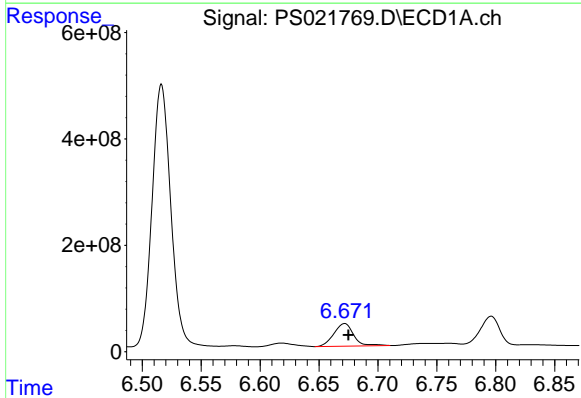
R.T.: 6.516 min
 Delta R.T.: -0.002 min
 Response: 5440664268
 Conc: 444.97 ng/ml

Instrument :
 ECD_S
 ClientSampleId :



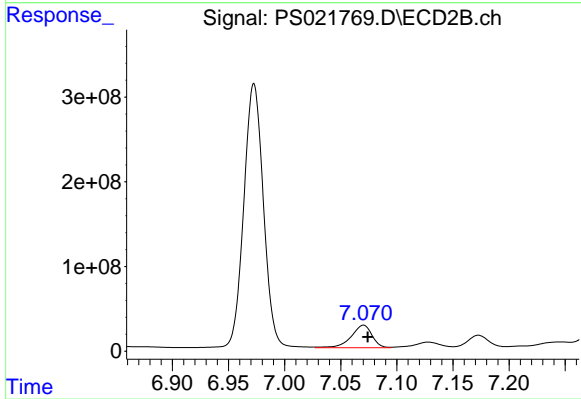
#5 DICAMBA

R.T.: 6.973 min
 Delta R.T.: -0.002 min
 Response: 3794140205
 Conc: 446.23 ng/ml



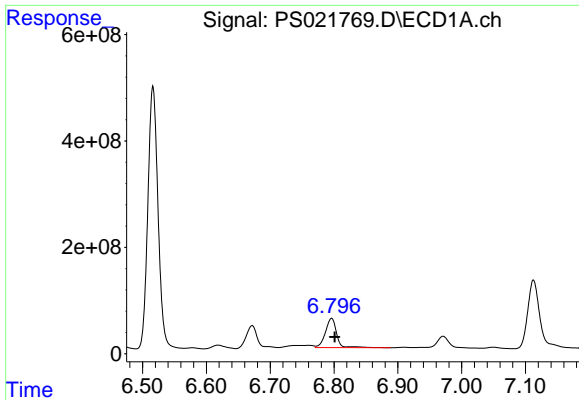
#6 MCPP

R.T.: 6.672 min
 Delta R.T.: -0.003 min
 Response: 500903238
 Conc: 52.28 ug/ml



#6 MCPP

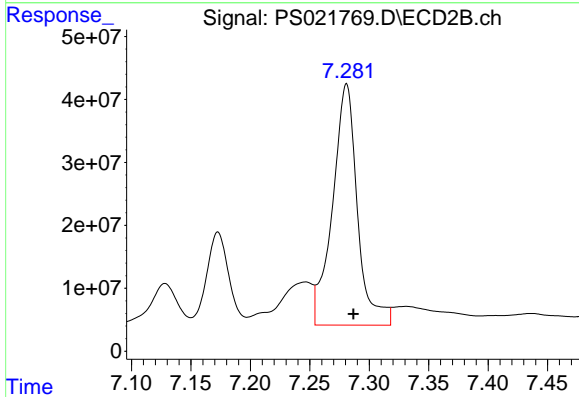
R.T.: 7.070 min
 Delta R.T.: -0.004 min
 Response: 341749246
 Conc: 51.53 ug/ml



#7 MCPA

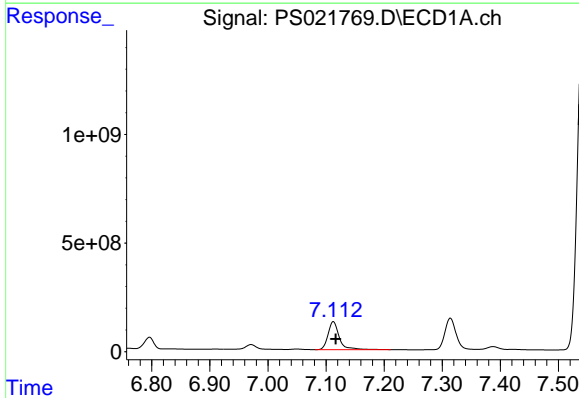
R.T.: 6.796 min
 Delta R.T.: -0.005 min
 Response: 674464719
 Conc: 52.22 ug/ml

Instrument :
 ECD_S
 ClientSampleId :



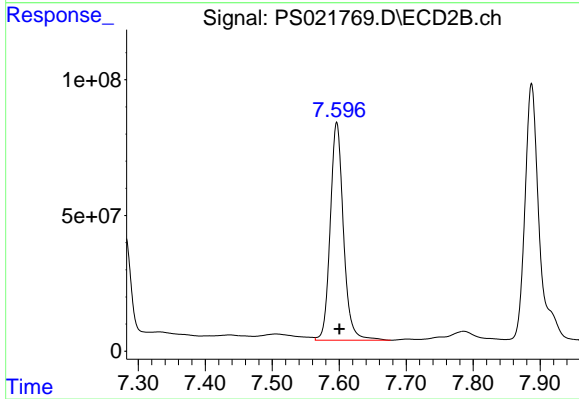
#7 MCPA

R.T.: 7.281 min
 Delta R.T.: -0.006 min
 Response: 559976314
 Conc: 61.74 ug/ml



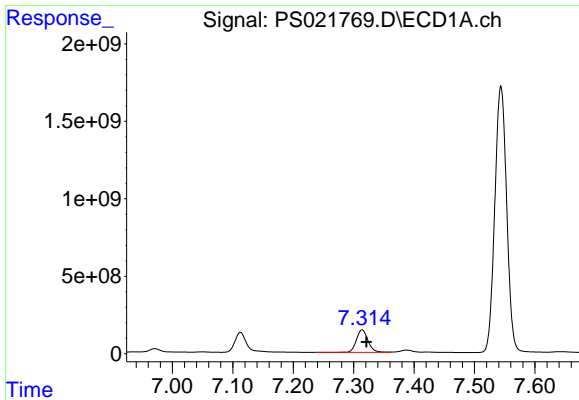
#8 DICHLORPROP

R.T.: 7.113 min
 Delta R.T.: -0.004 min
 Response: 1740953402
 Conc: 539.79 ng/ml



#8 DICHLORPROP

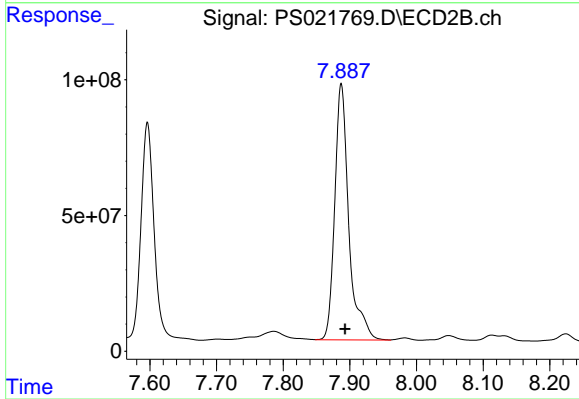
R.T.: 7.596 min
 Delta R.T.: -0.004 min
 Response: 1098702921
 Conc: 514.97 ng/ml



#9 2,4-D

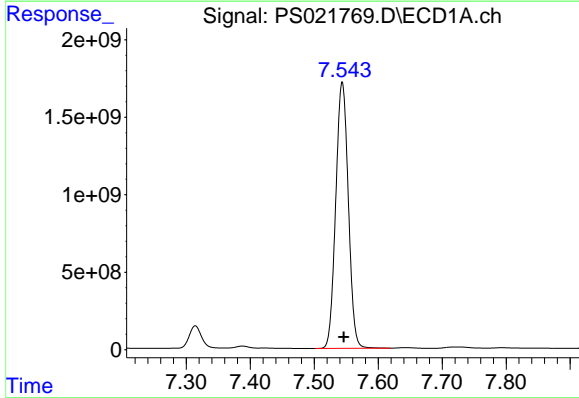
R.T.: 7.314 min
Delta R.T.: -0.007 min
Response: 1957108530
Conc: 503.92 ng/ml

Instrument :
ECD_S
ClientSampleId :



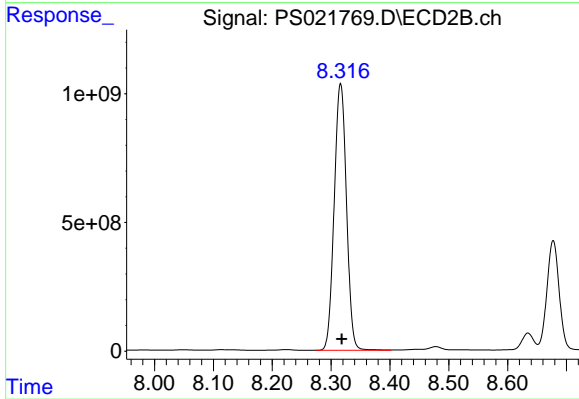
#9 2,4-D

R.T.: 7.887 min
Delta R.T.: -0.006 min
Response: 1386481793
Conc: 548.77 ng/ml



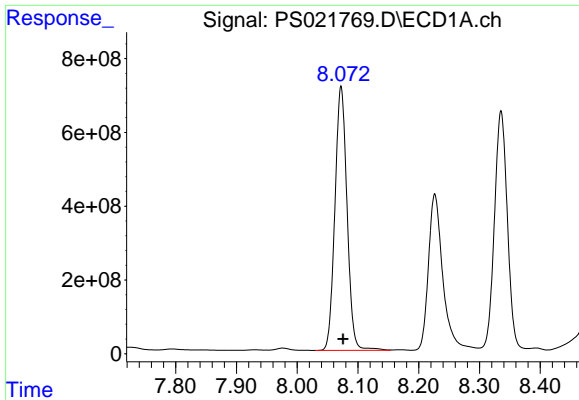
#10 Pentachlorophenol

R.T.: 7.544 min
Delta R.T.: -0.002 min
Response: 23407633167
Conc: 561.95 ng/ml



#10 Pentachlorophenol

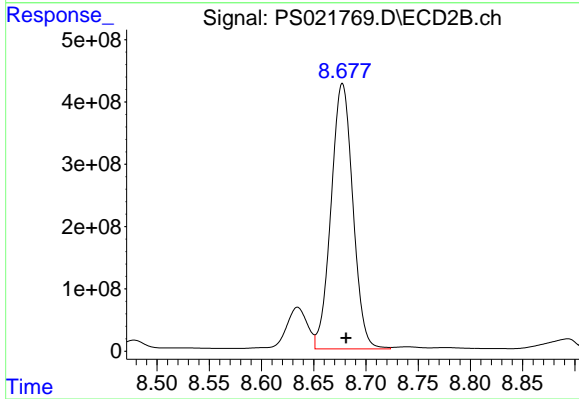
R.T.: 8.316 min
Delta R.T.: -0.002 min
Response: 15011423198
Conc: 523.07 ng/ml



#11 2,4,5-TP (SILVEX)

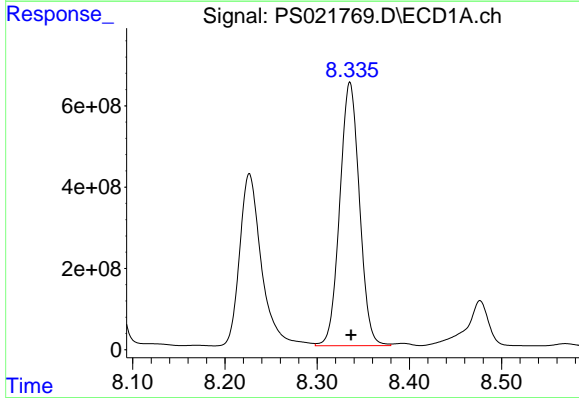
R.T.: 8.072 min
Delta R.T.: -0.003 min
Response: 9922447224
Conc: 538.50 ng/ml

Instrument :
ECD_S
ClientSampleId :



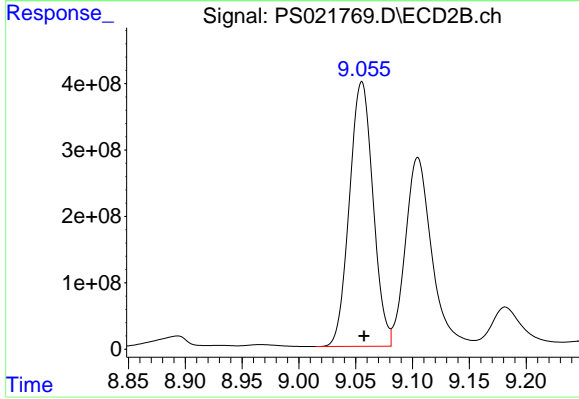
#11 2,4,5-TP (SILVEX)

R.T.: 8.678 min
Delta R.T.: -0.003 min
Response: 6185759889
Conc: 520.23 ng/ml



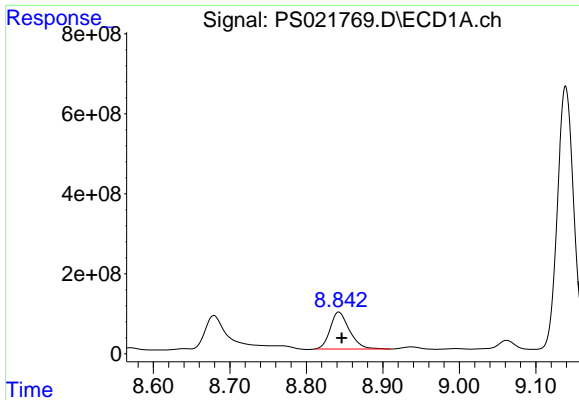
#12 2,4,5-T

R.T.: 8.336 min
Delta R.T.: -0.001 min
Response: 9602254586
Conc: 498.15 ng/ml



#12 2,4,5-T

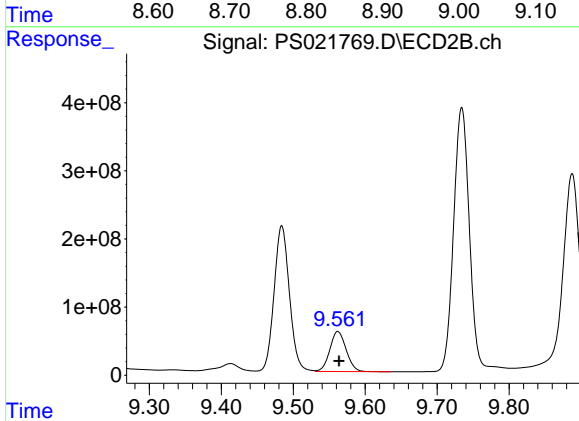
R.T.: 9.055 min
Delta R.T.: -0.002 min
Response: 5763940596
Conc: 516.02 ng/ml



#13 2,4-DB

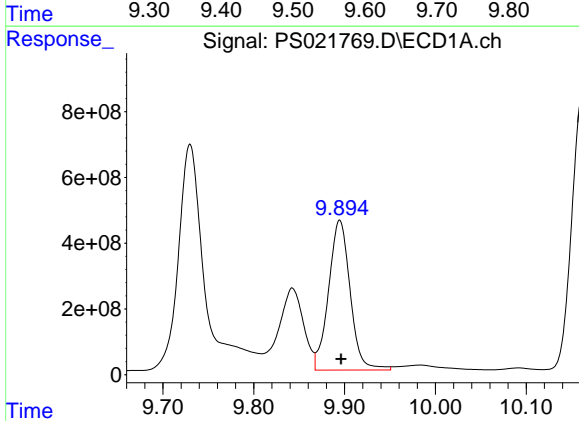
R.T.: 8.842 min
 Delta R.T.: -0.004 min
 Response: 1610473660
 Conc: 508.77 ng/ml

Instrument :
 ECD_S
 ClientSampleId :



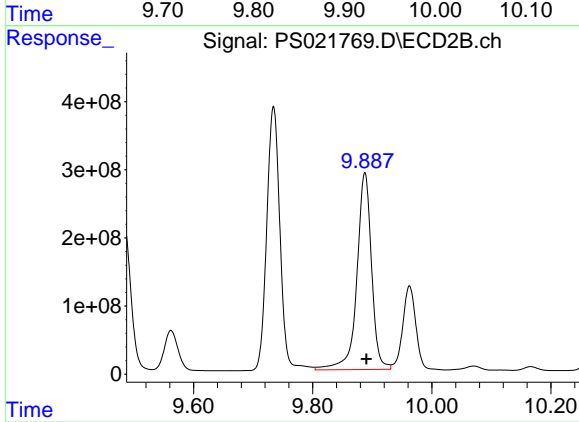
#13 2,4-DB

R.T.: 9.562 min
 Delta R.T.: -0.002 min
 Response: 925181709
 Conc: 617.51 ng/ml



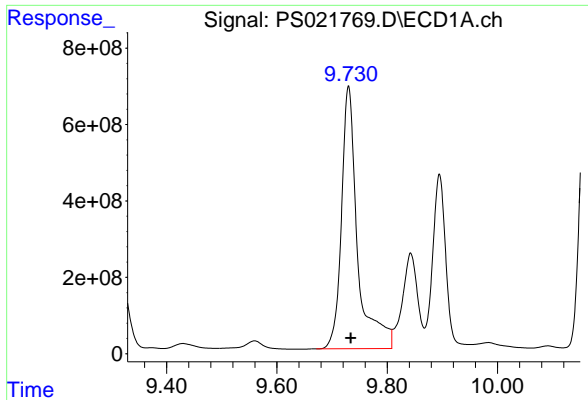
#14 DINOSEB

R.T.: 9.895 min
 Delta R.T.: -0.001 min
 Response: 7540095944
 Conc: 459.38 ng/ml



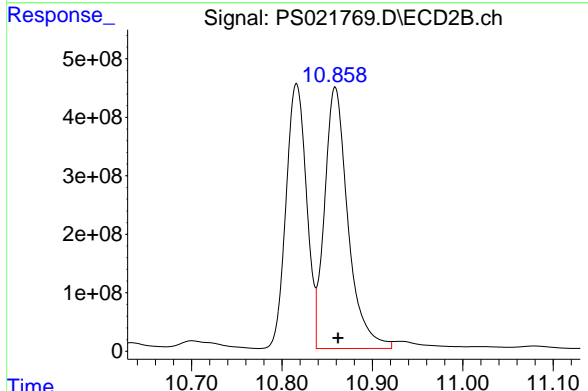
#14 DINOSEB

R.T.: 9.888 min
 Delta R.T.: -0.003 min
 Response: 4959601418
 Conc: 596.76 ng/ml

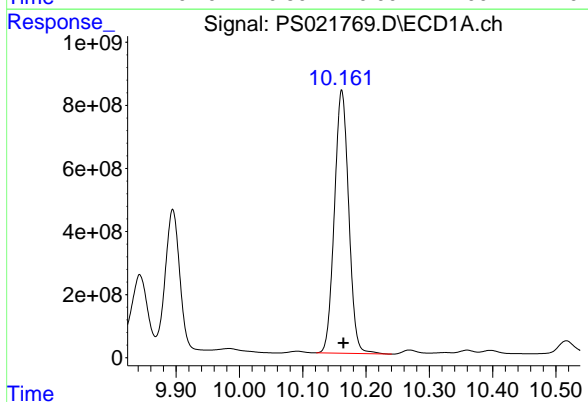


#15 Picloram
 R.T.: 9.730 min
 Delta R.T.: -0.004 min
 Response: 13930069477
 Conc: 491.06 ng/ml

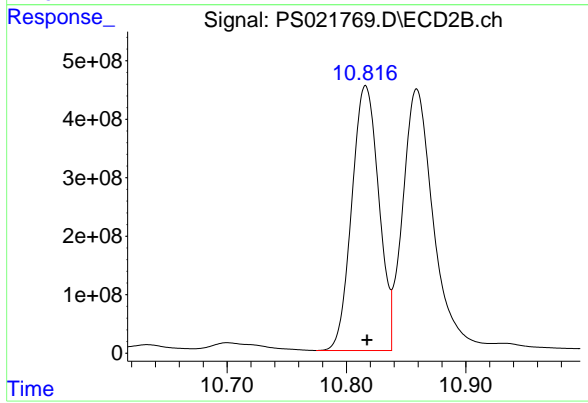
Instrument :
 ECD_S
 ClientSampleId :



#15 Picloram
 R.T.: 10.859 min
 Delta R.T.: -0.003 min
 Response: 8052804783
 Conc: 454.74 ng/ml



#16 DCPA
 R.T.: 10.162 min
 Delta R.T.: -0.003 min
 Response: 13094357128
 Conc: 530.05 ng/ml



#16 DCPA
 R.T.: 10.816 min
 Delta R.T.: -0.001 min
 Response: 7118323925
 Conc: 510.65 ng/ml