

Data Path : Z:\pestpcbsrv\HPCHEM1\ECD\_S\Data\PS011623\  
 Data File : PS021786.D  
 Signal(s) : Signal #1: ECD1A.ch Signal #2: ECD2B.ch  
 Acq On : 16 Jan 2023 19:34  
 Operator : AR\AJ  
 Sample : PB150264BL  
 Misc :  
 ALS Vial : 23 Sample Multiplier: 1

Instrument :  
 ECD\_S  
 ClientSampleId :

Integration File signal 1: autoint1.e  
 Integration File signal 2: autoint2.e  
 Quant Time: Jan 17 02:46:34 2023  
 Quant Method : Z:\pestpcbsrv\HPCHEM1\ECD\_S\Method\PS010923.M  
 Quant Title : 8080.M  
 QLast Update : Tue Jan 10 10:34:52 2023  
 Response via : Initial Calibration  
 Integrator: ChemStation

Volume Inj. : 2 µl  
 Signal #1 Phase : Rtx-CLPesticides Signal #2 Phase: Rtx-CLPesticides2  
 Signal #1 Info : 30M x 0.32mm x0.5 Signal #2 Info : 30M x 0.32mm x 0.25µm

	Compound	RT#1	RT#2	Resp#1	Resp#2	ng/ml	ng/ml
-----							
System Monitoring Compounds							
4) S	2,4-DCAA	6.373	6.807	1651.7E6	1184.6E6	593.364	659.305
Target Compounds							
1) T	Dalapon	2.438f	2.553	115.5E6	224.8E6	40.836	87.321 #
3) T	4-Nitroph...	6.220	6.459	10068571	7931471	6.908	7.235
5) T	DICAMBA	6.558f	6.974	1611306	17558887	<MDL	2.065 #
6) T	MCPD	6.703	7.041	-17952356	13243249	N.D.	1.997
7) T	MCPA	6.792	7.273	-11043446	84473360	N.D.	9.314
8) T	DICHLORPROP	7.101	7.618	464030	75865571	<MDL	35.559 #
9) T	2,4-D	7.370f	7.882	37000574	30494906	9.527	12.070 #
10) T	Pentachlo...	7.532	8.315	26396772	7075869	<MDL	<MDL #
11) T	2,4,5-TP ...	8.091	8.709	137.6E6	22066280	7.467	1.856 #
12) T	2,4,5-T	8.335	9.062	56532816	107.8E6	2.933	9.653 #
13) T	2,4-DB	8.857	9.571	397.8E6	236.9E6	125.670	158.122 #
14) T	DINOSEB	9.843f	9.886	6876.9E6	1353.1E6	418.978	162.817 #
15) T	Picloram	9.768	10.880	4804.5E6	1997.3E6	169.367	112.785 #
16) T	DCPA	10.191	10.815	616.7E6	92393452	24.966	6.628 #
-----							

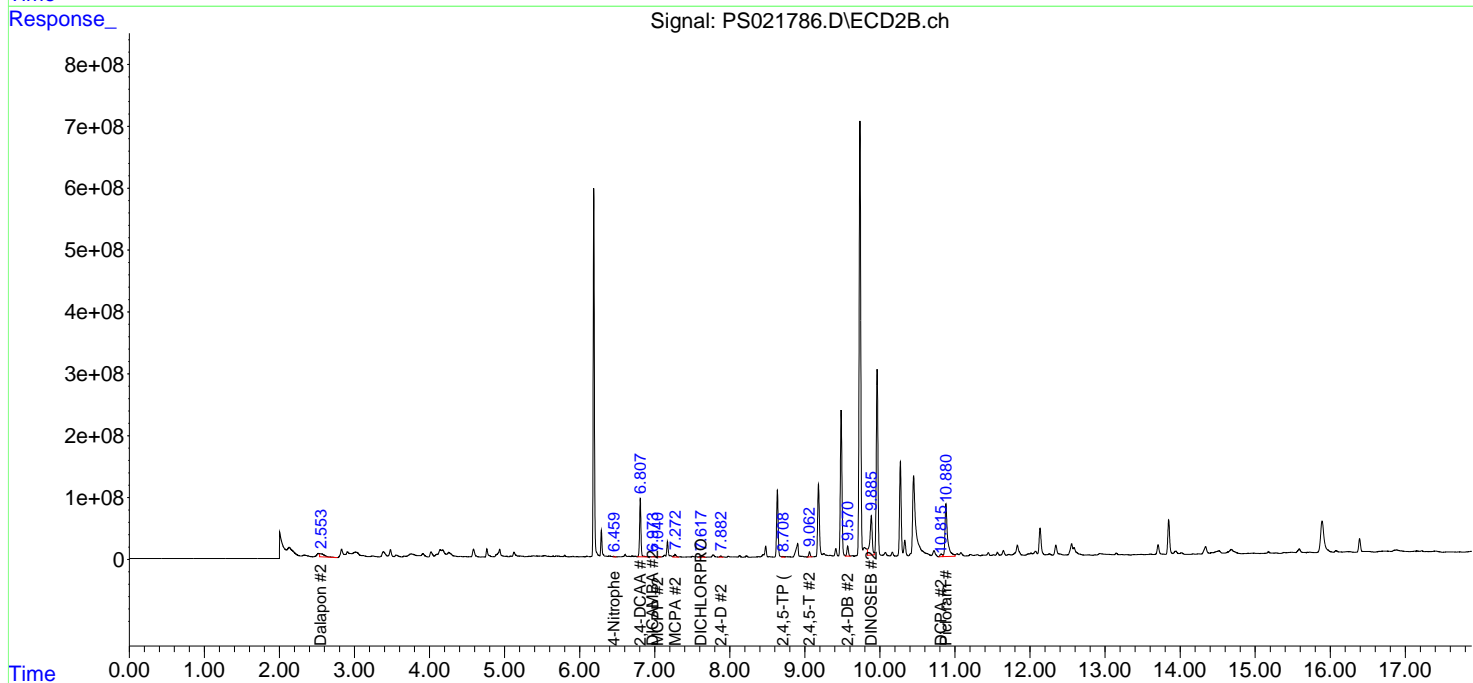
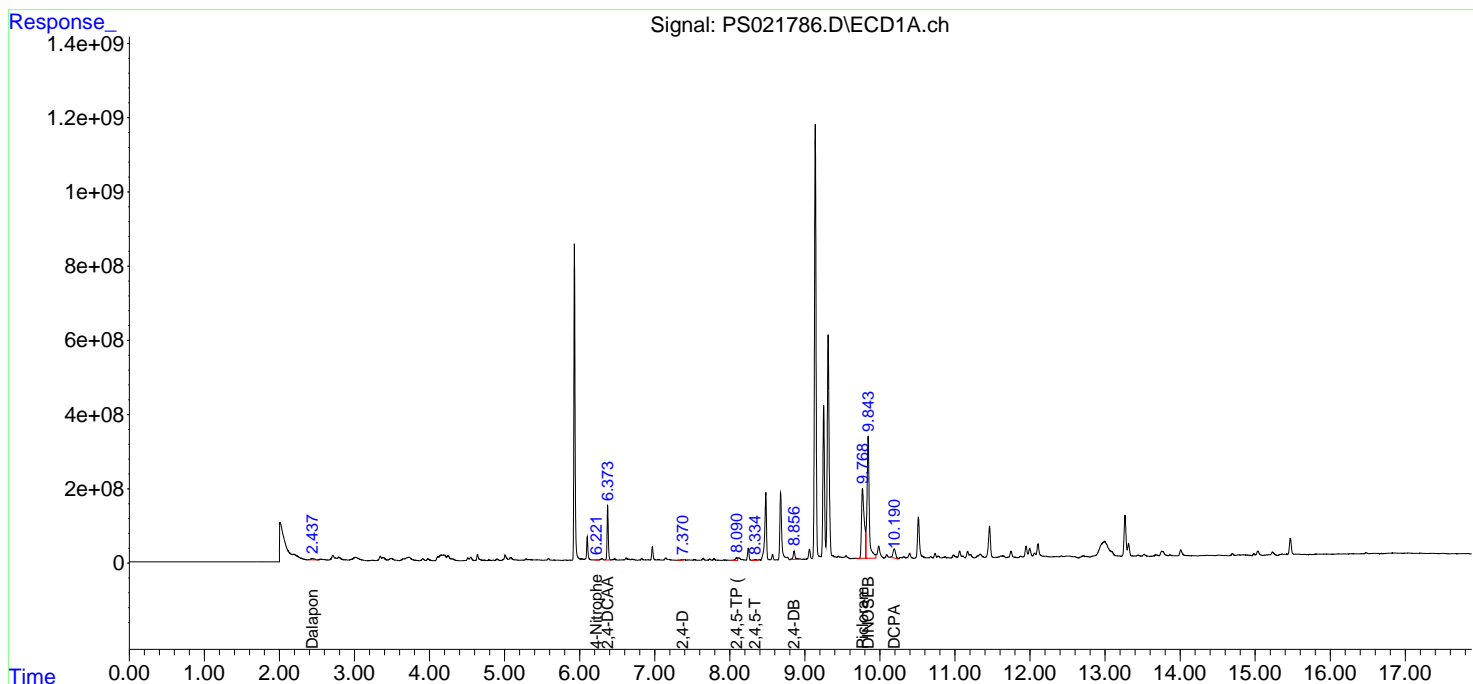
(f)=RT Delta > 1/2 Window (#)=Amounts differ by > 25% (m)=manual int.

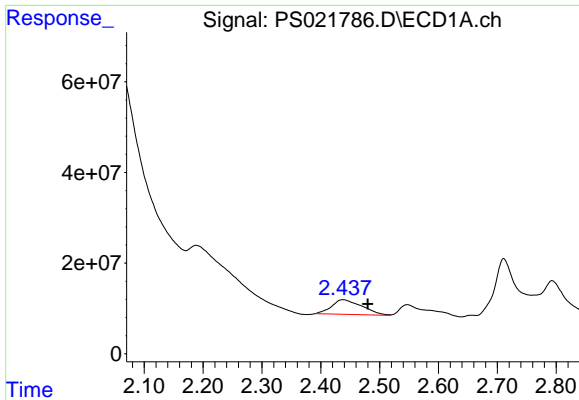
Data Path : Z:\pestpcbsrv\HPCHEM1\ECD\_S\Data\PS011623\  
 Data File : PS021786.D  
 Signal(s) : Signal #1: ECD1A.ch Signal #2: ECD2B.ch  
 Acq On : 16 Jan 2023 19:34  
 Operator : AR\AJ  
 Sample : PB150264BL  
 Misc :  
 ALS Vial : 23 Sample Multiplier: 1

Instrument :  
 ECD\_S  
 ClientSampleId :

Integration File signal 1: autoint1.e  
 Integration File signal 2: autoint2.e  
 Quant Time: Jan 17 02:46:34 2023  
 Quant Method : Z:\pestpcbsrv\HPCHEM1\ECD\_S\Method\PS010923.M  
 Quant Title : 8080.M  
 QLast Update : Tue Jan 10 10:34:52 2023  
 Response via : Initial Calibration  
 Integrator: ChemStation

Volume Inj. : 2 µl  
 Signal #1 Phase : Rtx-CLPesticides Signal #2 Phase: Rtx-CLPesticides2  
 Signal #1 Info : 30M x 0.32mm x0.5 Signal #2 Info : 30M x 0.32mm x 0.25µm

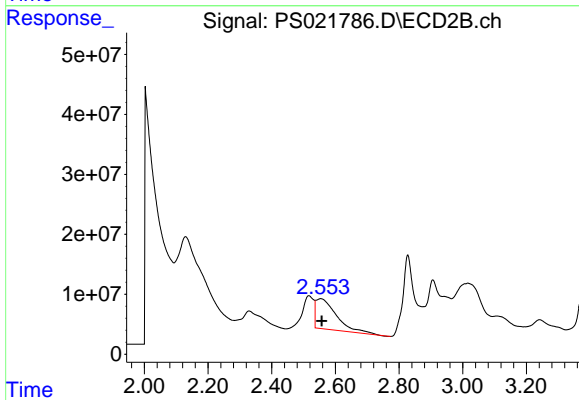




#1 Dalapon

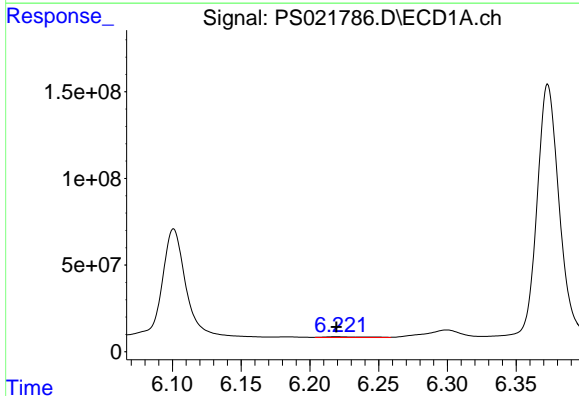
R.T.: 2.438 min  
 Delta R.T.: -0.042 min  
 Response: 115520995  
 Conc: 40.84 ng/ml

Instrument :  
 ECD\_S  
 ClientSampleId :



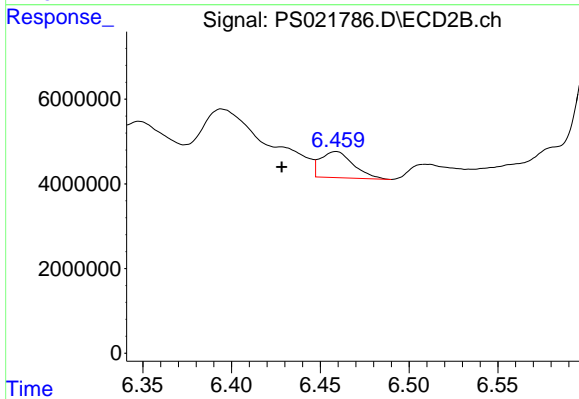
#1 Dalapon

R.T.: 2.553 min  
 Delta R.T.: -0.004 min  
 Response: 224789287  
 Conc: 87.32 ng/ml



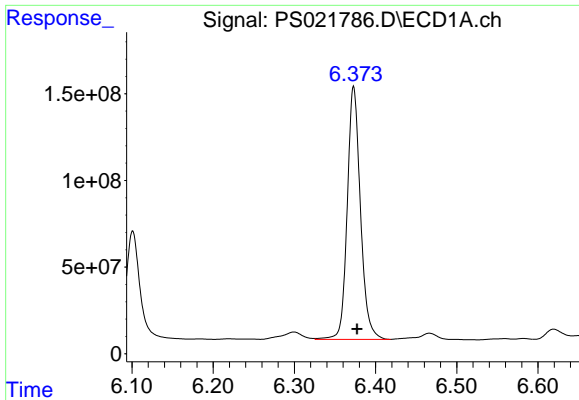
#3 4-Nitrophenol

R.T.: 6.220 min  
 Delta R.T.: 0.000 min  
 Response: 10068571  
 Conc: 6.91 ng/ml



#3 4-Nitrophenol

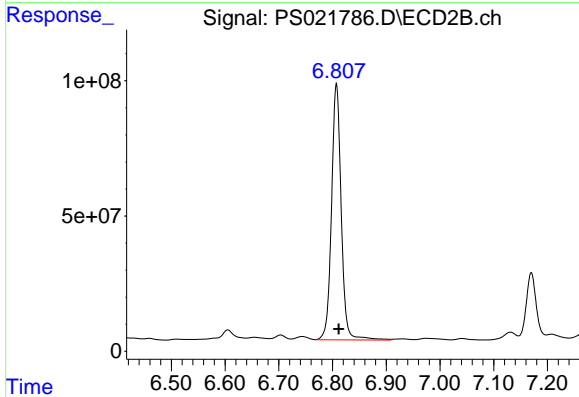
R.T.: 6.459 min  
 Delta R.T.: 0.031 min  
 Response: 7931471  
 Conc: 7.24 ng/ml



#4 2,4-DCAA

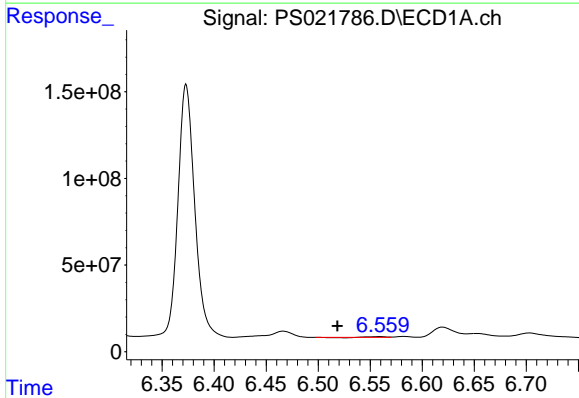
R.T.: 6.373 min  
 Delta R.T.: -0.004 min  
 Response: 1651669122  
 Conc: 593.36 ng/ml

Instrument :  
 ECD\_S  
 ClientSampleId :



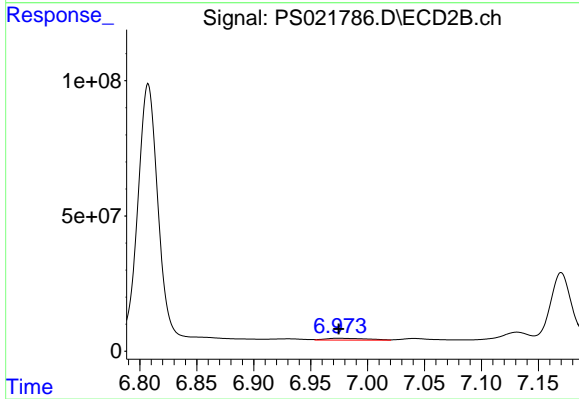
#4 2,4-DCAA

R.T.: 6.807 min  
 Delta R.T.: -0.004 min  
 Response: 1184566100  
 Conc: 659.30 ng/ml



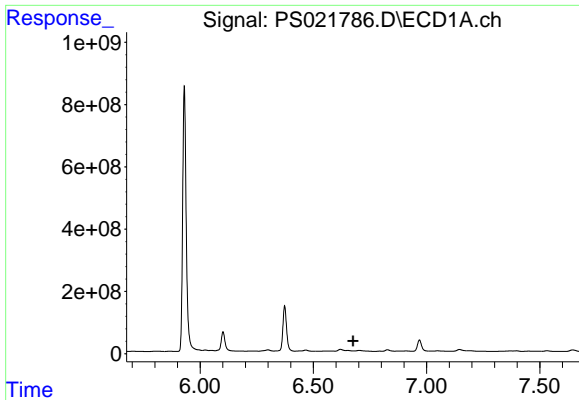
#5 DICAMBA

R.T.: 6.558 min  
 Delta R.T.: 0.040 min  
 Response: 1611306  
 Conc: N.D.



#5 DICAMBA

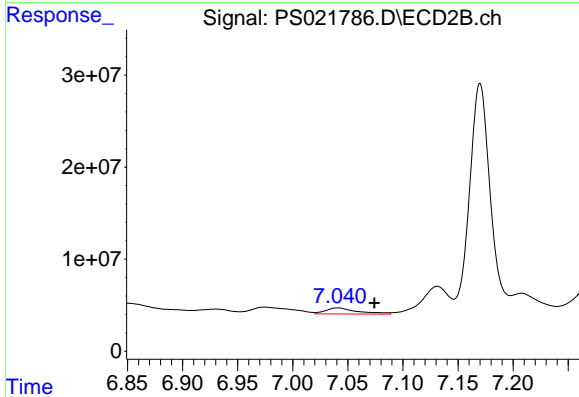
R.T.: 6.974 min  
 Delta R.T.: 0.000 min  
 Response: 17558887  
 Conc: 2.07 ng/ml



#6 MCPP

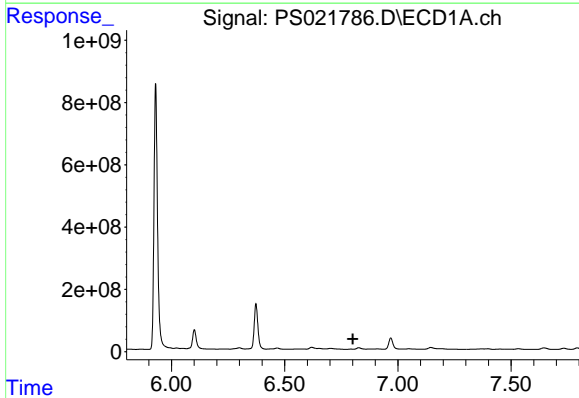
R.T.: 6.703 min  
 Delta R.T.: 0.028 min  
 Response: -17952356  
 Conc: N.D.

Instrument :  
 ECD\_S  
 ClientSampleId :



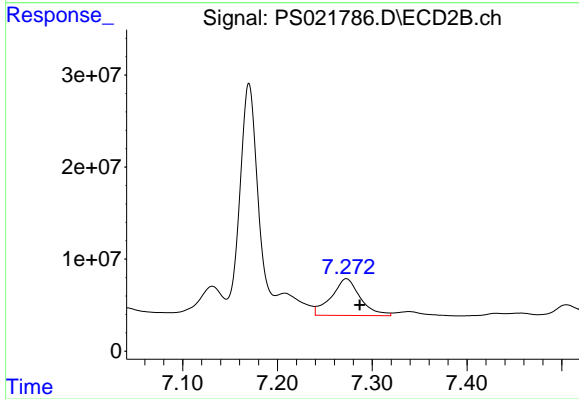
#6 MCPP

R.T.: 7.041 min  
 Delta R.T.: -0.033 min  
 Response: 13243249  
 Conc: 2.00 ug/ml



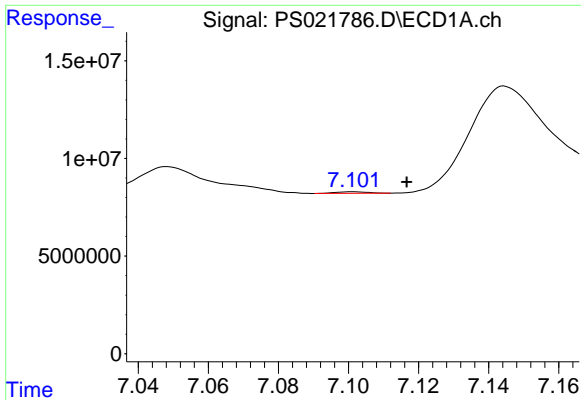
#7 MCPA

R.T.: 6.792 min  
 Delta R.T.: -0.009 min  
 Response: -11043446  
 Conc: N.D.



#7 MCPA

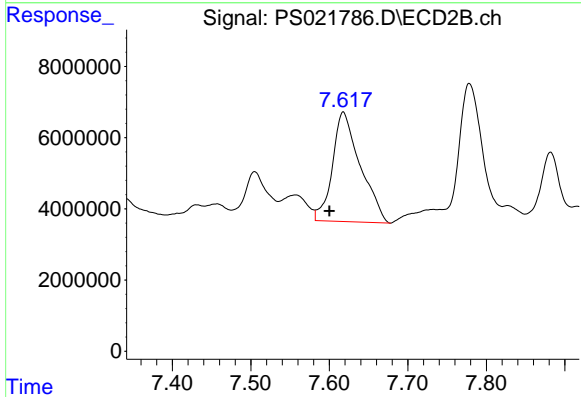
R.T.: 7.273 min  
 Delta R.T.: -0.014 min  
 Response: 84473360  
 Conc: 9.31 ug/ml



#8 DICHLORPROP

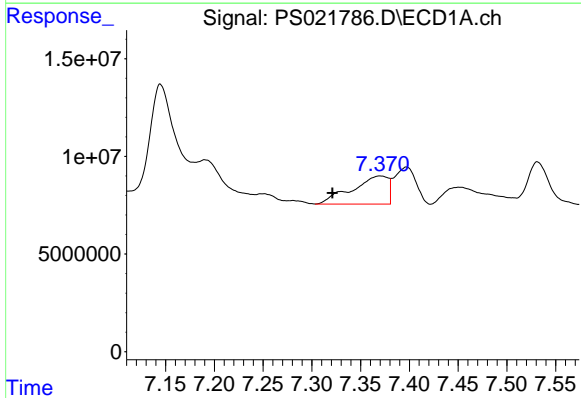
R.T.: 7.101 min  
 Delta R.T.: -0.015 min  
 Response: 464030  
 Conc: N.D.

Instrument :  
 ECD\_S  
 ClientSampleId :



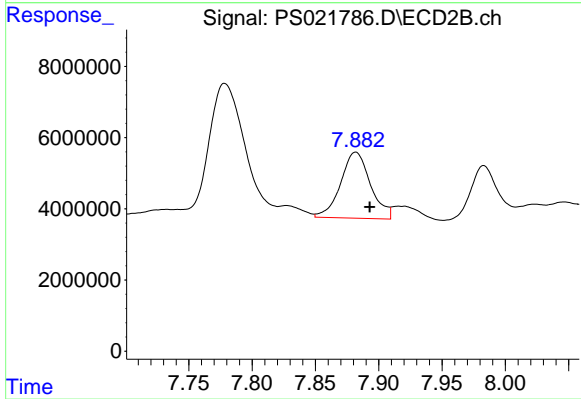
#8 DICHLORPROP

R.T.: 7.618 min  
 Delta R.T.: 0.017 min  
 Response: 75865571  
 Conc: 35.56 ng/ml



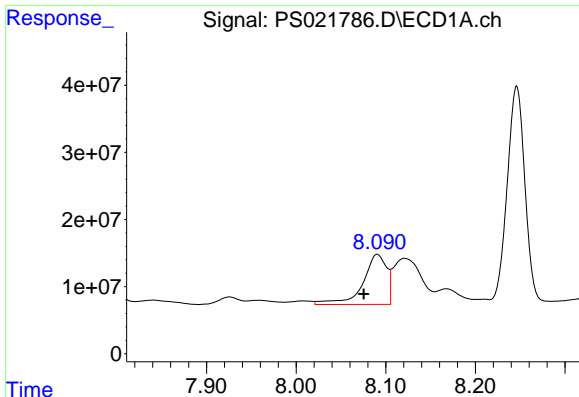
#9 2,4-D

R.T.: 7.370 min  
 Delta R.T.: 0.049 min  
 Response: 37000574  
 Conc: 9.53 ng/ml



#9 2,4-D

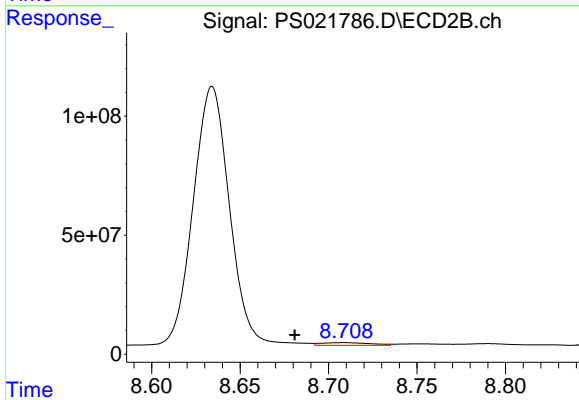
R.T.: 7.882 min  
 Delta R.T.: -0.011 min  
 Response: 30494906  
 Conc: 12.07 ng/ml



#11 2,4,5-TP (SILVEX)

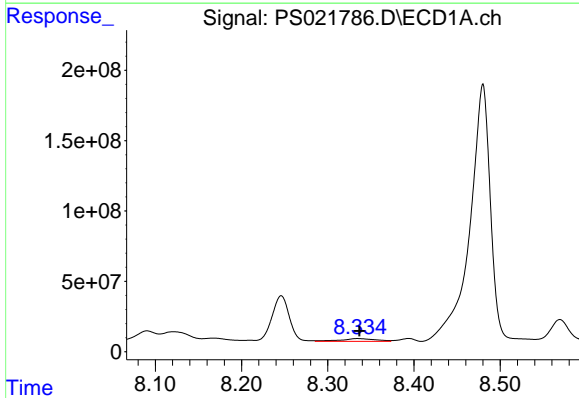
R.T.: 8.091 min  
 Delta R.T.: 0.015 min  
 Response: 137587781  
 Conc: 7.47 ng/ml

Instrument :  
 ECD\_S  
 ClientSampleId :



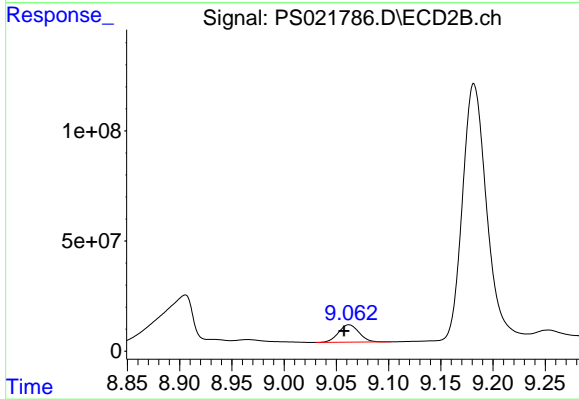
#11 2,4,5-TP (SILVEX)

R.T.: 8.709 min  
 Delta R.T.: 0.028 min  
 Response: 22066280  
 Conc: 1.86 ng/ml



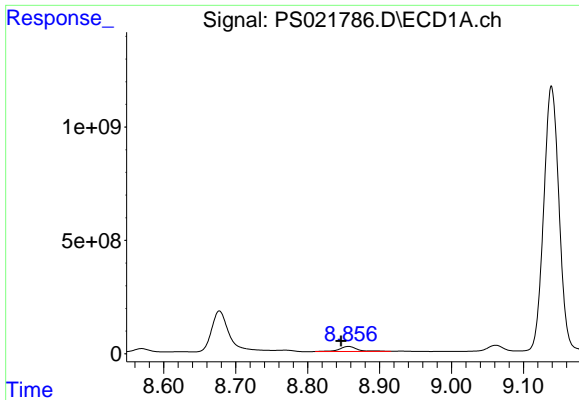
#12 2,4,5-T

R.T.: 8.335 min  
 Delta R.T.: -0.002 min  
 Response: 56532816  
 Conc: 2.93 ng/ml



#12 2,4,5-T

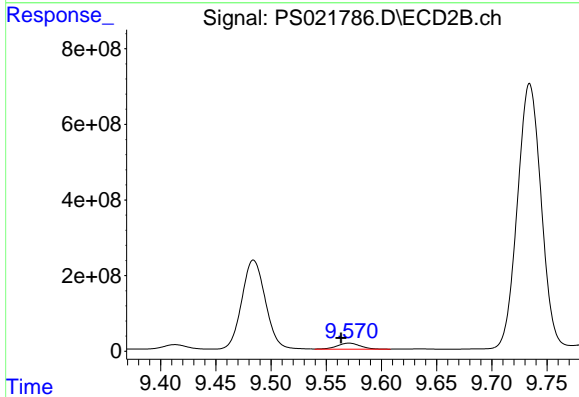
R.T.: 9.062 min  
 Delta R.T.: 0.005 min  
 Response: 107823559  
 Conc: 9.65 ng/ml



#13 2,4-DB

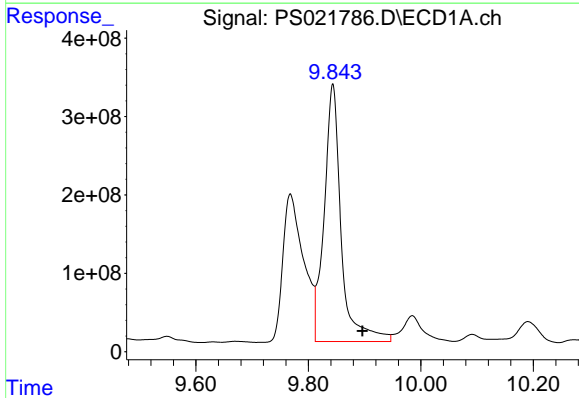
R.T.: 8.857 min  
 Delta R.T.: 0.010 min  
 Response: 397800063  
 Conc: 125.67 ng/ml

Instrument :  
 ECD\_S  
 ClientSampleId :



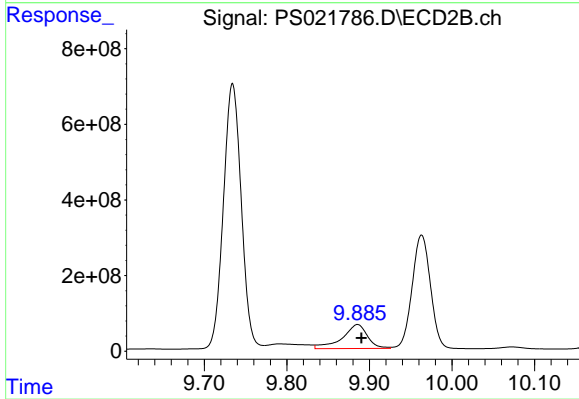
#13 2,4-DB

R.T.: 9.571 min  
 Delta R.T.: 0.007 min  
 Response: 236907775  
 Conc: 158.12 ng/ml



#14 DINOSEB

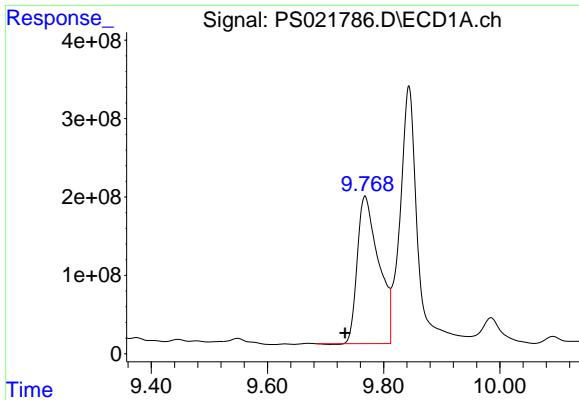
R.T.: 9.843 min  
 Delta R.T.: -0.053 min  
 Response: 6876943711  
 Conc: 418.98 ng/ml



#14 DINOSEB

R.T.: 9.886 min  
 Delta R.T.: -0.005 min  
 Response: 1353144398  
 Conc: 162.82 ng/ml

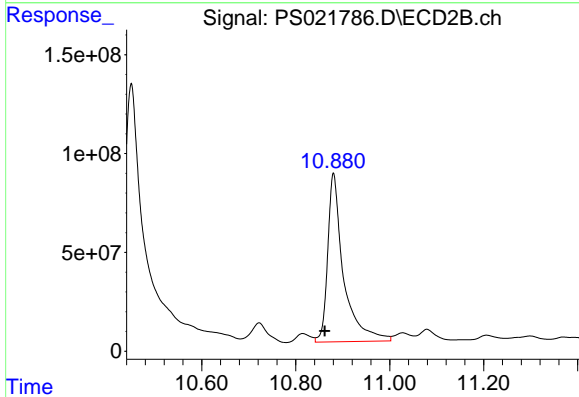




#15 Picloram

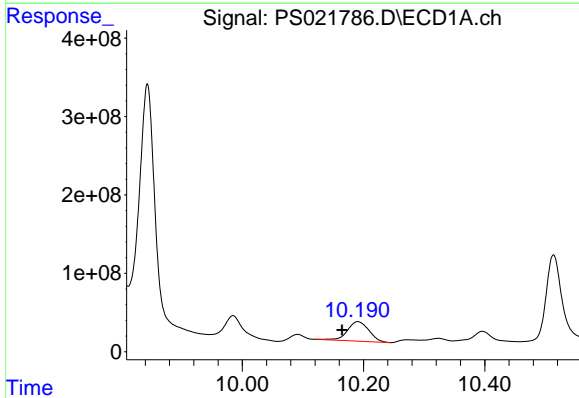
R.T.: 9.768 min  
 Delta R.T.: 0.034 min  
 Response: 4804518869  
 Conc: 169.37 ng/ml

Instrument :  
 ECD\_S  
 ClientSampleId :



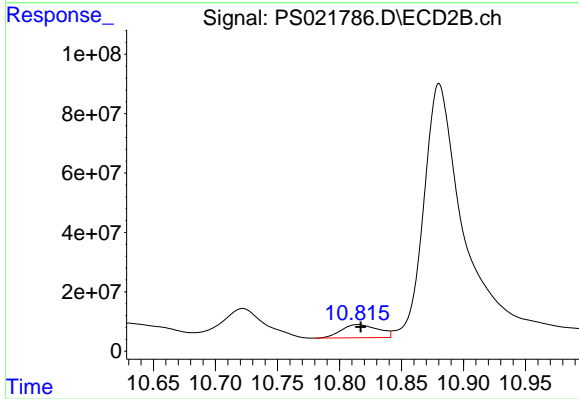
#15 Picloram

R.T.: 10.880 min  
 Delta R.T.: 0.018 min  
 Response: 1997252517  
 Conc: 112.79 ng/ml



#16 DCPA

R.T.: 10.191 min  
 Delta R.T.: 0.026 min  
 Response: 616748166  
 Conc: 24.97 ng/ml



#16 DCPA

R.T.: 10.815 min  
 Delta R.T.: -0.002 min  
 Response: 92393452  
 Conc: 6.63 ng/ml