

Data Path : Z:\pestpcbsrv\HPCHEM1\ECD\_S\Data\PS011623\  
 Data File : PS021792.D  
 Signal(s) : Signal #1: ECD1A.ch Signal #2: ECD2B.ch  
 Acq On : 16 Jan 2023 22:47  
 Operator : AR\AJ  
 Sample : 01159-01MSD  
 Misc :  
 ALS Vial : 27 Sample Multiplier: 1

Instrument :  
 ECD\_S  
 ClientSampleId :

Integration File signal 1: autoint1.e  
 Integration File signal 2: autoint2.e  
 Quant Time: Jan 17 02:51:34 2023  
 Quant Method : Z:\pestpcbsrv\HPCHEM1\ECD\_S\Method\PS010923.M  
 Quant Title : 8080.M  
 QLast Update : Tue Jan 10 10:34:52 2023  
 Response via : Initial Calibration  
 Integrator: ChemStation

Volume Inj. : 2 µl  
 Signal #1 Phase : Rtx-CLPesticides Signal #2 Phase: Rtx-CLPesticides2  
 Signal #1 Info : 30M x 0.32mm x0.5 Signal #2 Info : 30M x 0.32mm x 0.25µm

	Compound	RT#1	RT#2	Resp#1	Resp#2	ng/ml	ng/ml
-----							
System Monitoring Compounds							
4) S	2,4-DCAA	6.374	6.809	983.8E6	613.6E6	353.422	341.539
Target Compounds							
2) T	3,5-DICHL...	5.748	5.991	817.7E6	564.1E6	211.399	204.710
3) T	4-Nitroph...	6.215	6.426	532.7E6	382.0E6	365.490	348.510
5) T	DICAMBA	6.516	6.972	3274.8E6	2154.1E6	267.832	253.340
6) T	MCP	6.667	7.065	118.1E6	96434282	12.321	14.542
7) T	MCPA	6.792	7.277	201.5E6	240.0E6	15.602	26.466 #
8) T	DICHLORPROP	7.113	7.598	609.8E6	479.4E6	189.083	224.699
9) T	2,4-D	7.318	7.889	851.6E6	680.3E6	219.262	269.257
10) T	Pentachlo...	7.544	8.316	4398.3E6	2811.0E6	105.592	97.948
11) T	2,4,5-TP ...	8.072	8.677	2097.9E6	1339.9E6	113.854	112.685
12) T	2,4,5-T	8.333	9.056	3232.4E6	1904.8E6	167.691	170.525
13) T	2,4-DB	8.846	9.563	416.4E6	172.5E6	131.545	115.143
14) T	DINOSEB	9.894	9.888	415.2E6	304.8E6	25.295	36.675 #
15) T	Picloram	9.732	10.860	7994.9E6	5086.0E6	281.832	287.205
16) T	DCPA	10.161	10.816	9604.3E6	5309.0E6	388.777	380.850
-----							

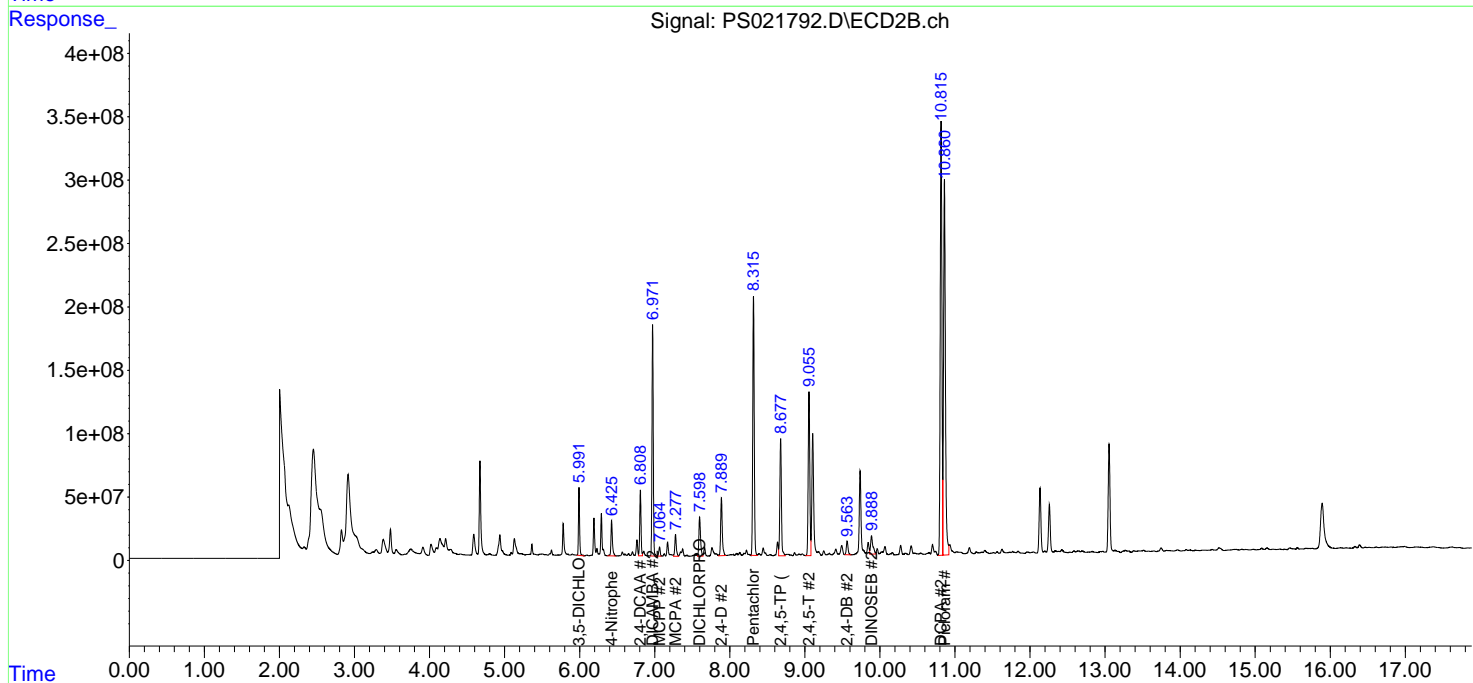
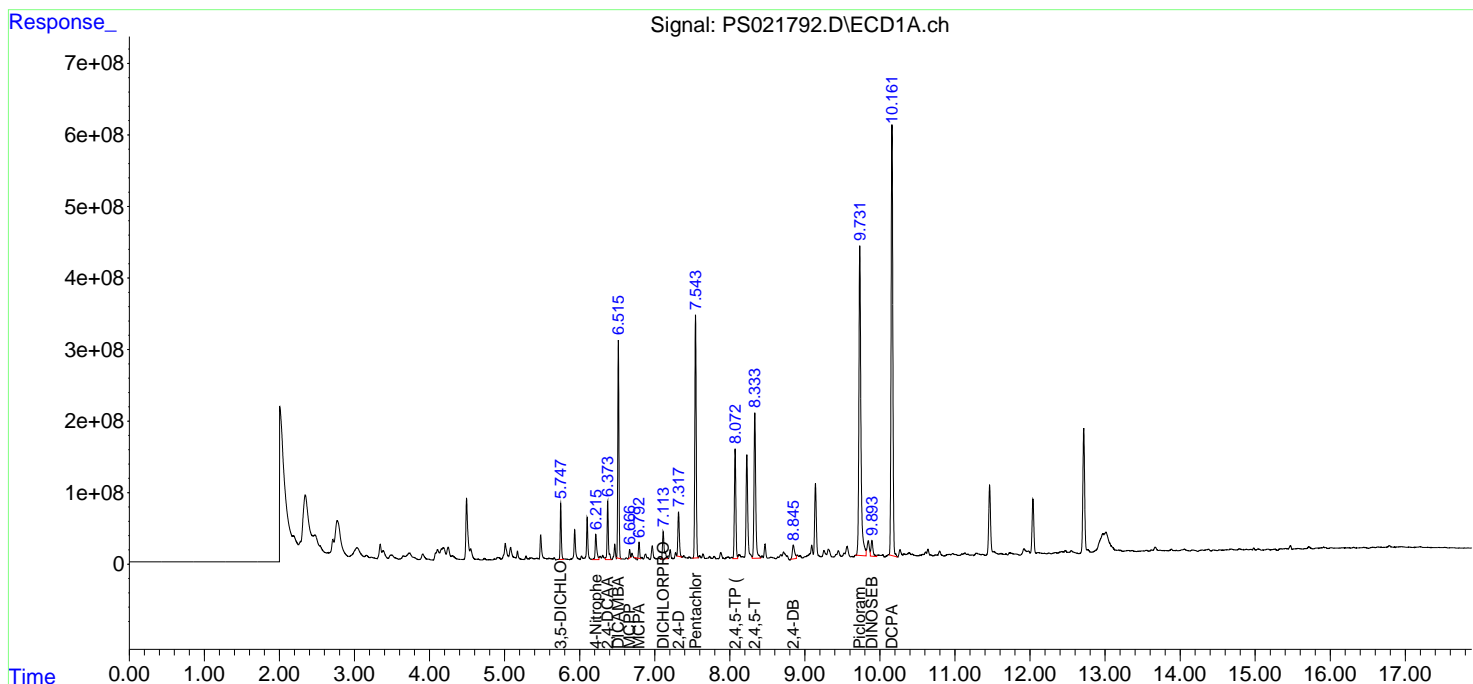
(f)=RT Delta > 1/2 Window (#)=Amounts differ by > 25% (m)=manual int.

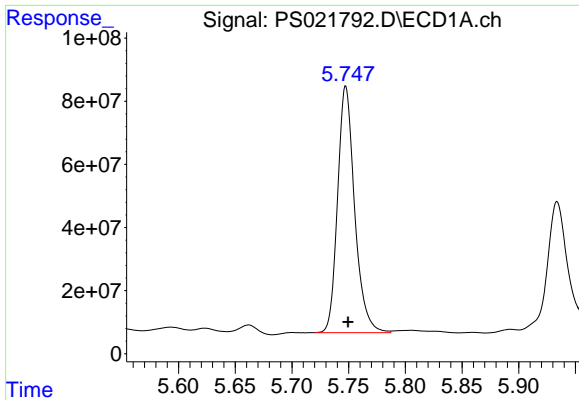
Data Path : Z:\pestpcbsrv\HPCHEM1\ECD\_S\Data\PS011623\  
 Data File : PS021792.D  
 Signal(s) : Signal #1: ECD1A.ch Signal #2: ECD2B.ch  
 Acq On : 16 Jan 2023 22:47  
 Operator : AR\AJ  
 Sample : 01159-01MSD  
 Misc :  
 ALS Vial : 27 Sample Multiplier: 1

Instrument :  
 ECD\_S  
 ClientSampleId :

Integration File signal 1: autoint1.e  
 Integration File signal 2: autoint2.e  
 Quant Time: Jan 17 02:51:34 2023  
 Quant Method : Z:\pestpcbsrv\HPCHEM1\ECD\_S\Method\PS010923.M  
 Quant Title : 8080.M  
 QLast Update : Tue Jan 10 10:34:52 2023  
 Response via : Initial Calibration  
 Integrator: ChemStation

Volume Inj. : 2 µl  
 Signal #1 Phase : Rtx-CLPesticides Signal #2 Phase: Rtx-CLPesticides2  
 Signal #1 Info : 30M x 0.32mm x0.5 Signal #2 Info : 30M x 0.32mm x 0.25µm

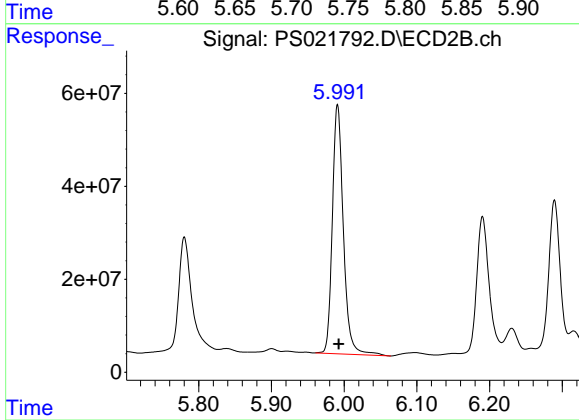




#2 3,5-DICHLOROBenZOIC ACID

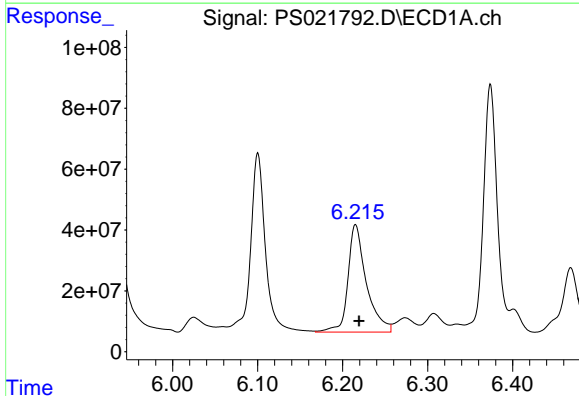
R.T.: 5.748 min  
 Delta R.T.: -0.002 min  
 Response: 817749664  
 Conc: 211.40 ng/ml

Instrument :  
 ECD\_S  
 ClientSampleId :



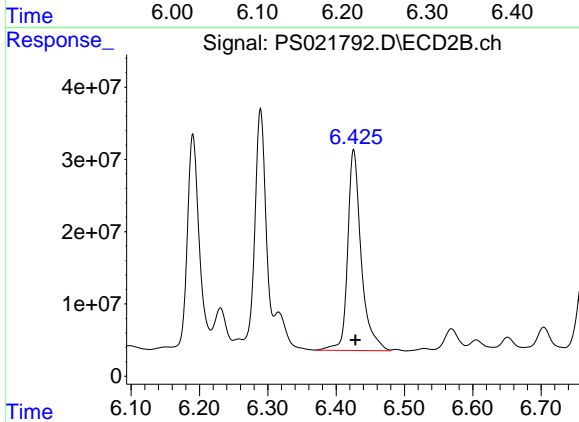
#2 3,5-DICHLOROBenZOIC ACID

R.T.: 5.991 min  
 Delta R.T.: -0.001 min  
 Response: 564148197  
 Conc: 204.71 ng/ml



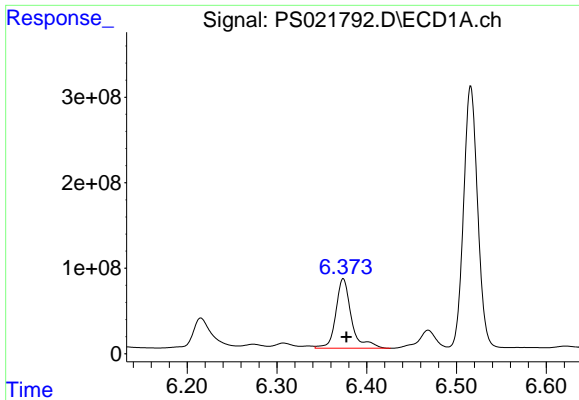
#3 4-Nitrophenol

R.T.: 6.215 min  
 Delta R.T.: -0.004 min  
 Response: 532744038  
 Conc: 365.49 ng/ml



#3 4-Nitrophenol

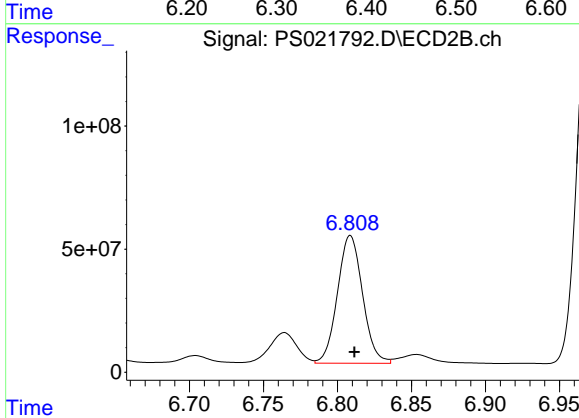
R.T.: 6.426 min  
 Delta R.T.: -0.002 min  
 Response: 382045837  
 Conc: 348.51 ng/ml



#4 2,4-DCAA

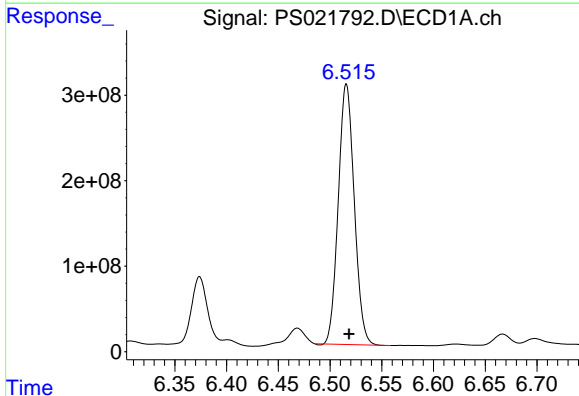
R.T.: 6.374 min  
 Delta R.T.: -0.003 min  
 Response: 983772527  
 Conc: 353.42 ng/ml

Instrument :  
 ECD\_S  
 ClientSampleId :



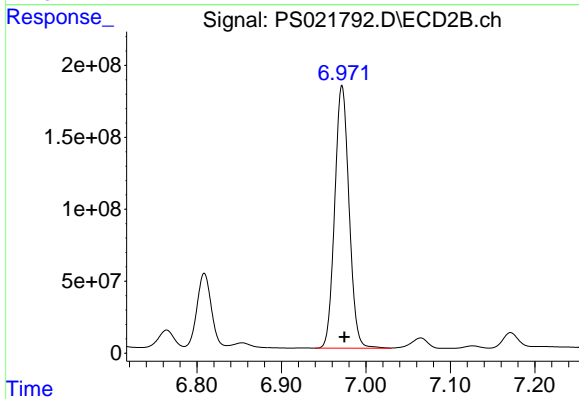
#4 2,4-DCAA

R.T.: 6.809 min  
 Delta R.T.: -0.003 min  
 Response: 613638927  
 Conc: 341.54 ng/ml



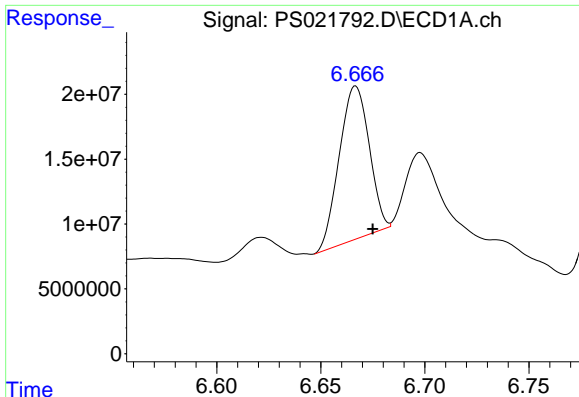
#5 DICAMBA

R.T.: 6.516 min  
 Delta R.T.: -0.003 min  
 Response: 3274823718  
 Conc: 267.83 ng/ml



#5 DICAMBA

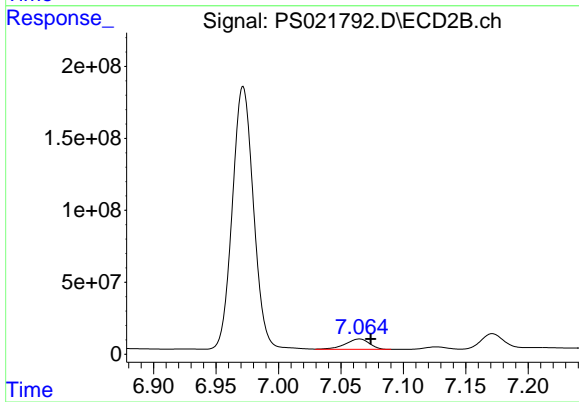
R.T.: 6.972 min  
 Delta R.T.: -0.003 min  
 Response: 2154089965  
 Conc: 253.34 ng/ml



#6 MCP

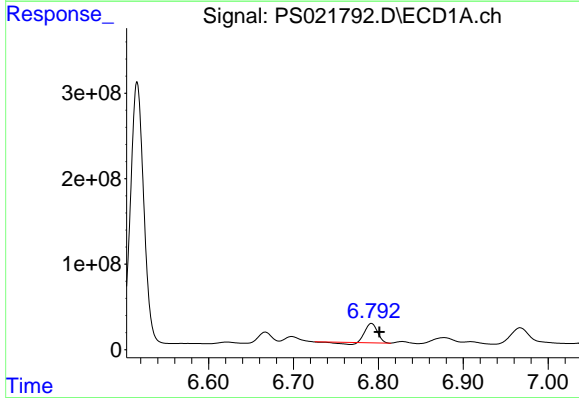
R.T.: 6.667 min  
 Delta R.T.: -0.008 min  
 Response: 118056462  
 Conc: 12.32 ug/ml

Instrument :  
 ECD\_S  
 ClientSampleId :



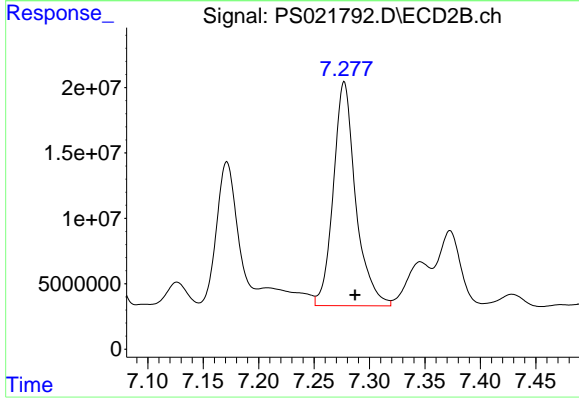
#6 MCP

R.T.: 7.065 min  
 Delta R.T.: -0.009 min  
 Response: 96434282  
 Conc: 14.54 ug/ml



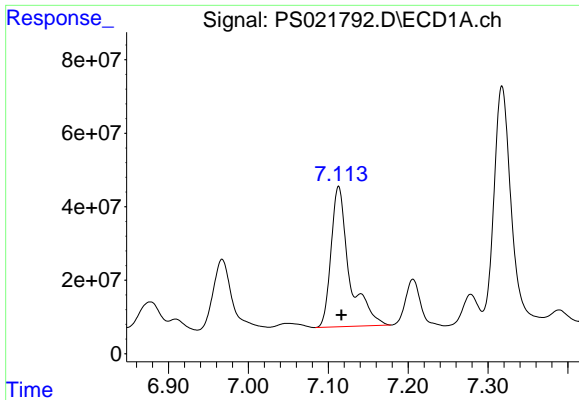
#7 MCP

R.T.: 6.792 min  
 Delta R.T.: -0.009 min  
 Response: 201522091  
 Conc: 15.60 ug/ml



#7 MCP

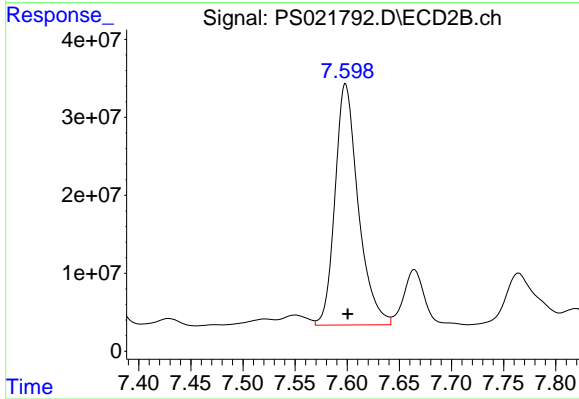
R.T.: 7.277 min  
 Delta R.T.: -0.010 min  
 Response: 240034431  
 Conc: 26.47 ug/ml



#8 DICHLORPROP

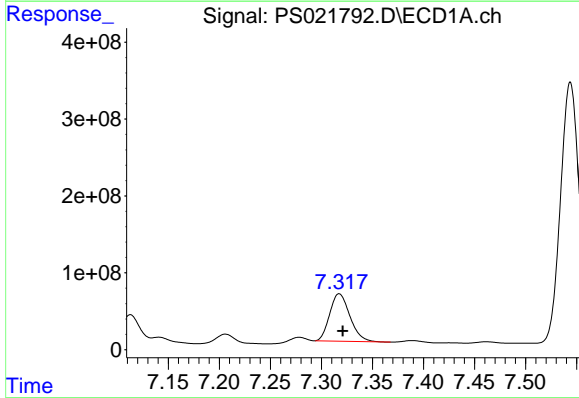
R.T.: 7.113 min  
Delta R.T.: -0.004 min  
Response: 609842815  
Conc: 189.08 ng/ml

Instrument :  
ECD\_S  
ClientSampleId :



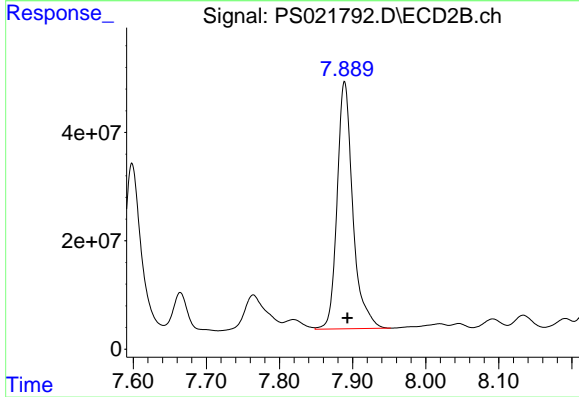
#8 DICHLORPROP

R.T.: 7.598 min  
Delta R.T.: -0.002 min  
Response: 479402548  
Conc: 224.70 ng/ml



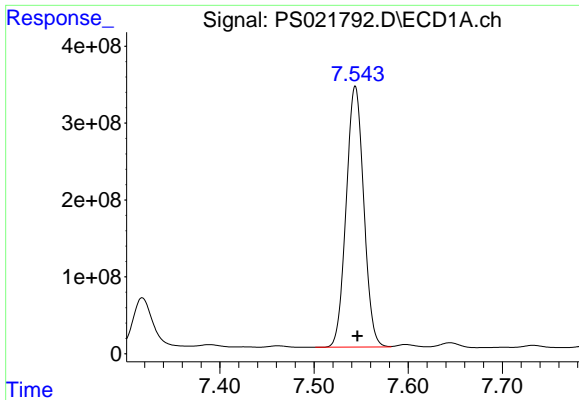
#9 2,4-D

R.T.: 7.318 min  
Delta R.T.: -0.003 min  
Response: 851569004  
Conc: 219.26 ng/ml



#9 2,4-D

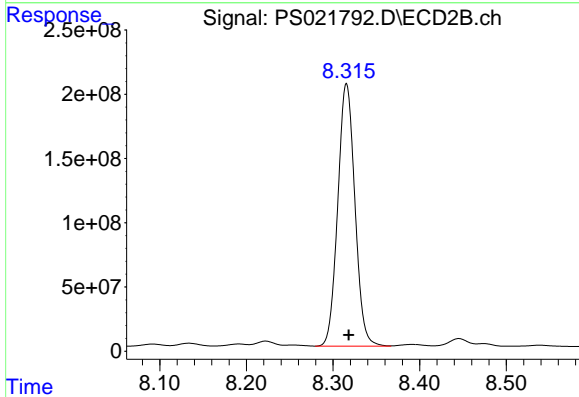
R.T.: 7.889 min  
Delta R.T.: -0.004 min  
Response: 680283097  
Conc: 269.26 ng/ml



#10 Pentachlorophenol

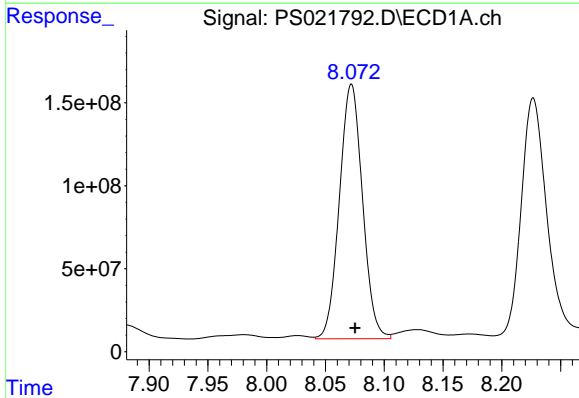
R.T.: 7.544 min  
Delta R.T.: -0.002 min  
Response: 4398348693  
Conc: 105.59 ng/ml

Instrument :  
ECD\_S  
ClientSampleId :



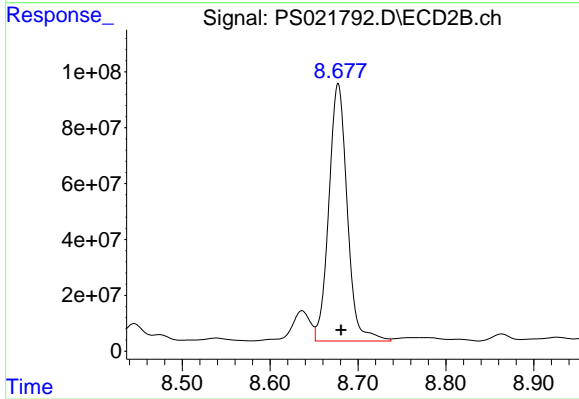
#10 Pentachlorophenol

R.T.: 8.316 min  
Delta R.T.: -0.003 min  
Response: 2810964470  
Conc: 97.95 ng/ml



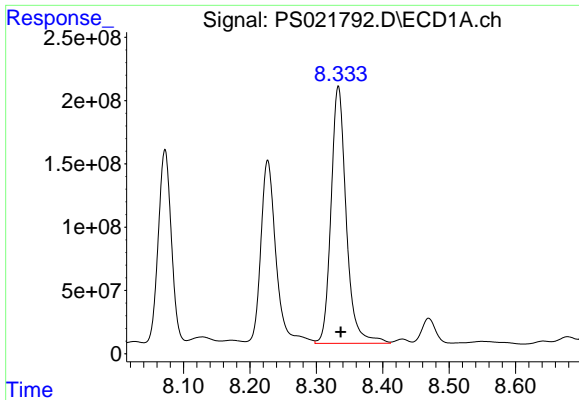
#11 2,4,5-TP (SILVEX)

R.T.: 8.072 min  
Delta R.T.: -0.003 min  
Response: 2097887547  
Conc: 113.85 ng/ml



#11 2,4,5-TP (SILVEX)

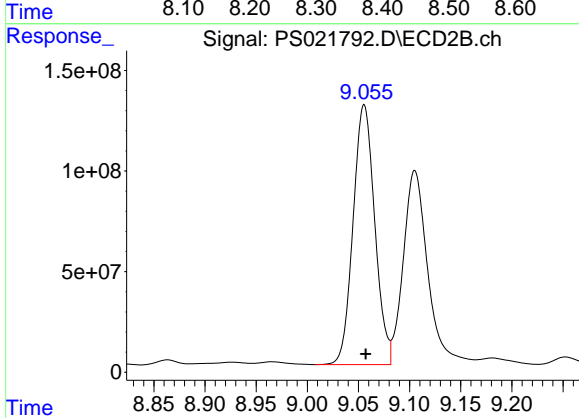
R.T.: 8.677 min  
Delta R.T.: -0.003 min  
Response: 1339863450  
Conc: 112.68 ng/ml



#12 2,4,5-T

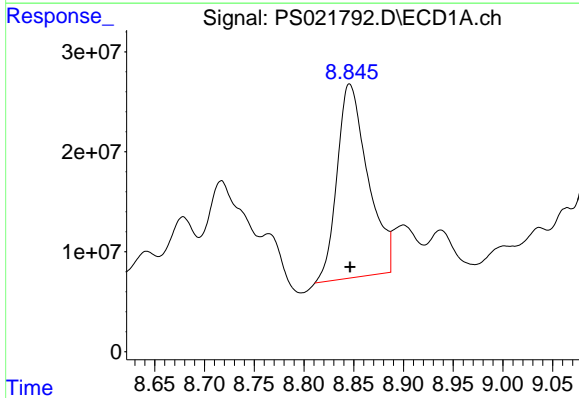
R.T.: 8.333 min  
 Delta R.T.: -0.003 min  
 Response: 3232363210  
 Conc: 167.69 ng/ml

Instrument :  
 ECD\_S  
 ClientSampleId :



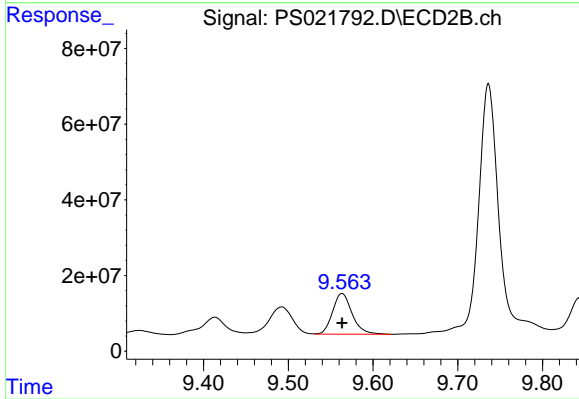
#12 2,4,5-T

R.T.: 9.056 min  
 Delta R.T.: -0.002 min  
 Response: 1904760583  
 Conc: 170.52 ng/ml



#13 2,4-DB

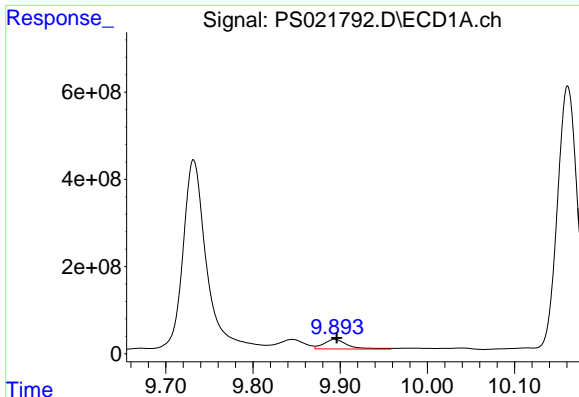
R.T.: 8.846 min  
 Delta R.T.: 0.000 min  
 Response: 416396592  
 Conc: 131.54 ng/ml



#13 2,4-DB

R.T.: 9.563 min  
 Delta R.T.: 0.000 min  
 Response: 172513228  
 Conc: 115.14 ng/ml

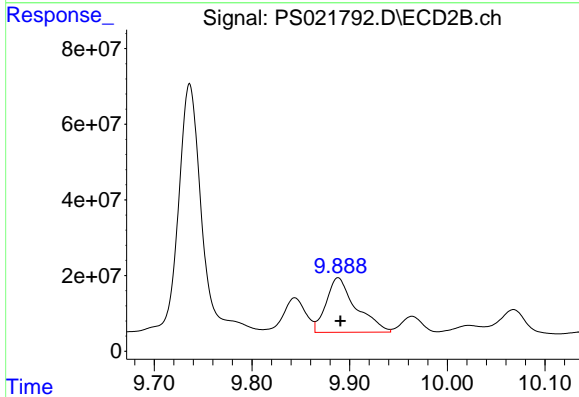




#14 DINOSEB

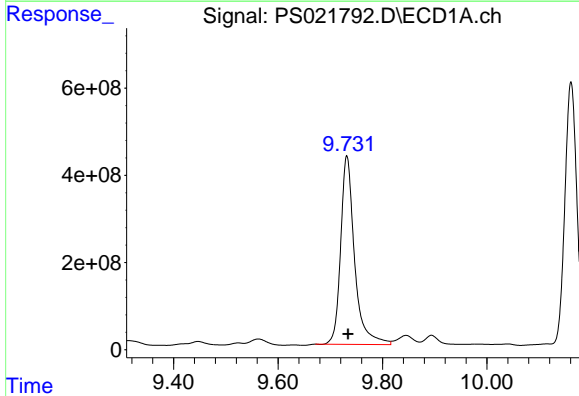
R.T.: 9.894 min  
 Delta R.T.: -0.002 min  
 Response: 415180441  
 Conc: 25.29 ng/ml

Instrument :  
 ECD\_S  
 ClientSampleId :



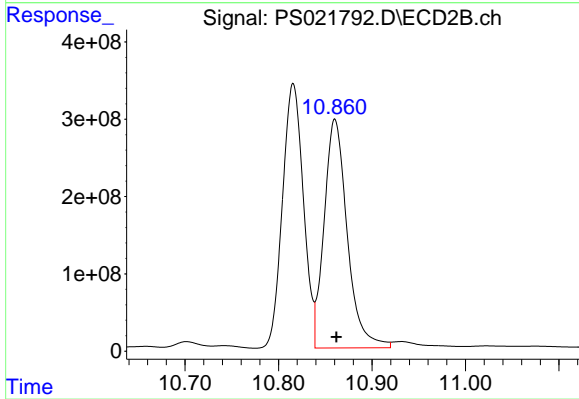
#14 DINOSEB

R.T.: 9.888 min  
 Delta R.T.: -0.002 min  
 Response: 304801666  
 Conc: 36.68 ng/ml



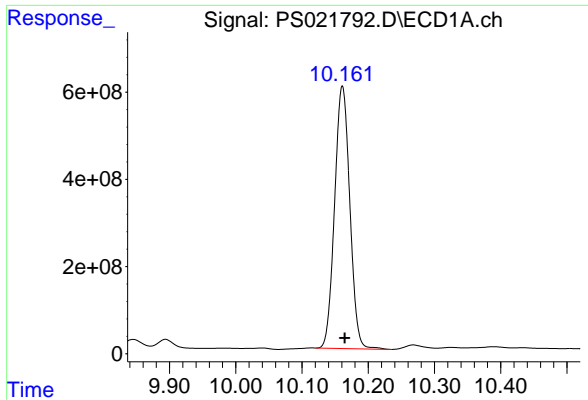
#15 Picloram

R.T.: 9.732 min  
 Delta R.T.: -0.002 min  
 Response: 7994852347  
 Conc: 281.83 ng/ml



#15 Picloram

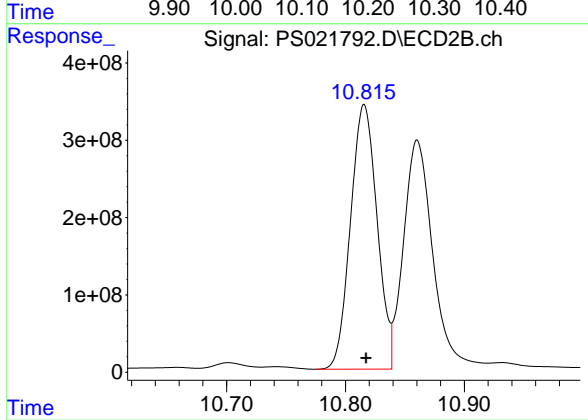
R.T.: 10.860 min  
 Delta R.T.: -0.002 min  
 Response: 5085970257  
 Conc: 287.21 ng/ml



#16 DCPA

R.T.: 10.161 min  
Delta R.T.: -0.004 min  
Response: 9604284561  
Conc: 388.78 ng/ml

Instrument :  
ECD\_S  
ClientSampleId :



#16 DCPA

R.T.: 10.816 min  
Delta R.T.: -0.002 min  
Response: 5308958799  
Conc: 380.85 ng/ml